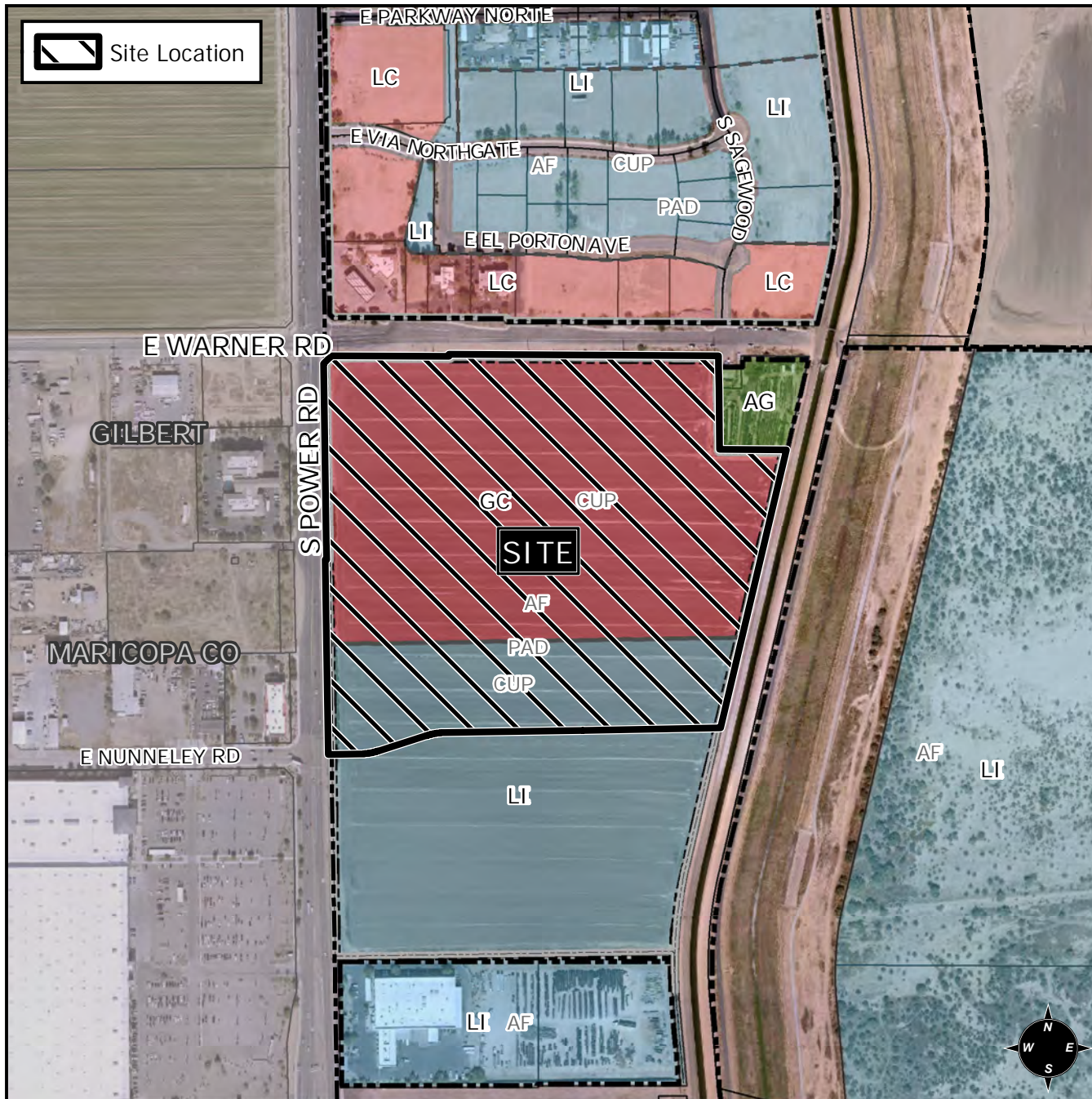


Planning and Zoning Vicinity Map: ZON21-00892

Case Details



CASE:

PRE-PLAT : ☒

ZON21-00892

SITE / ADDRESS:

District 6. Within the 4400 to 4700 blocks of South Power Road (east side) and within the 6800 to 7000 blocks of East Warner Road (south side). Located at the southeast corner of Power Road and Warner Road. (40± acres)

REQUEST:

Modification of the Planned Area Development Overlay (PAD) and Site Plan Modification. This request will allow for commercial development.

