



DESIGN REVIEW BOARD

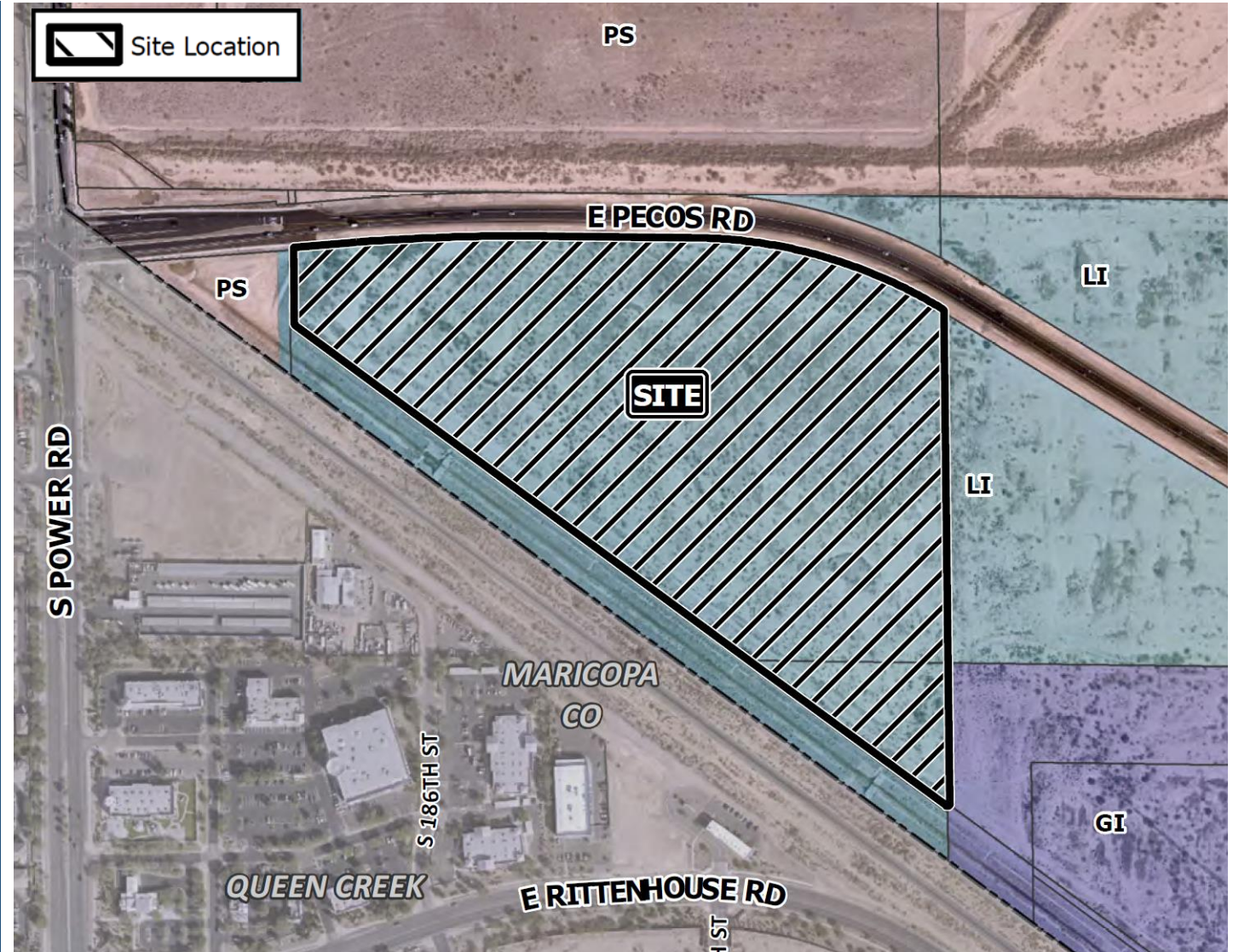
October 12, 2021

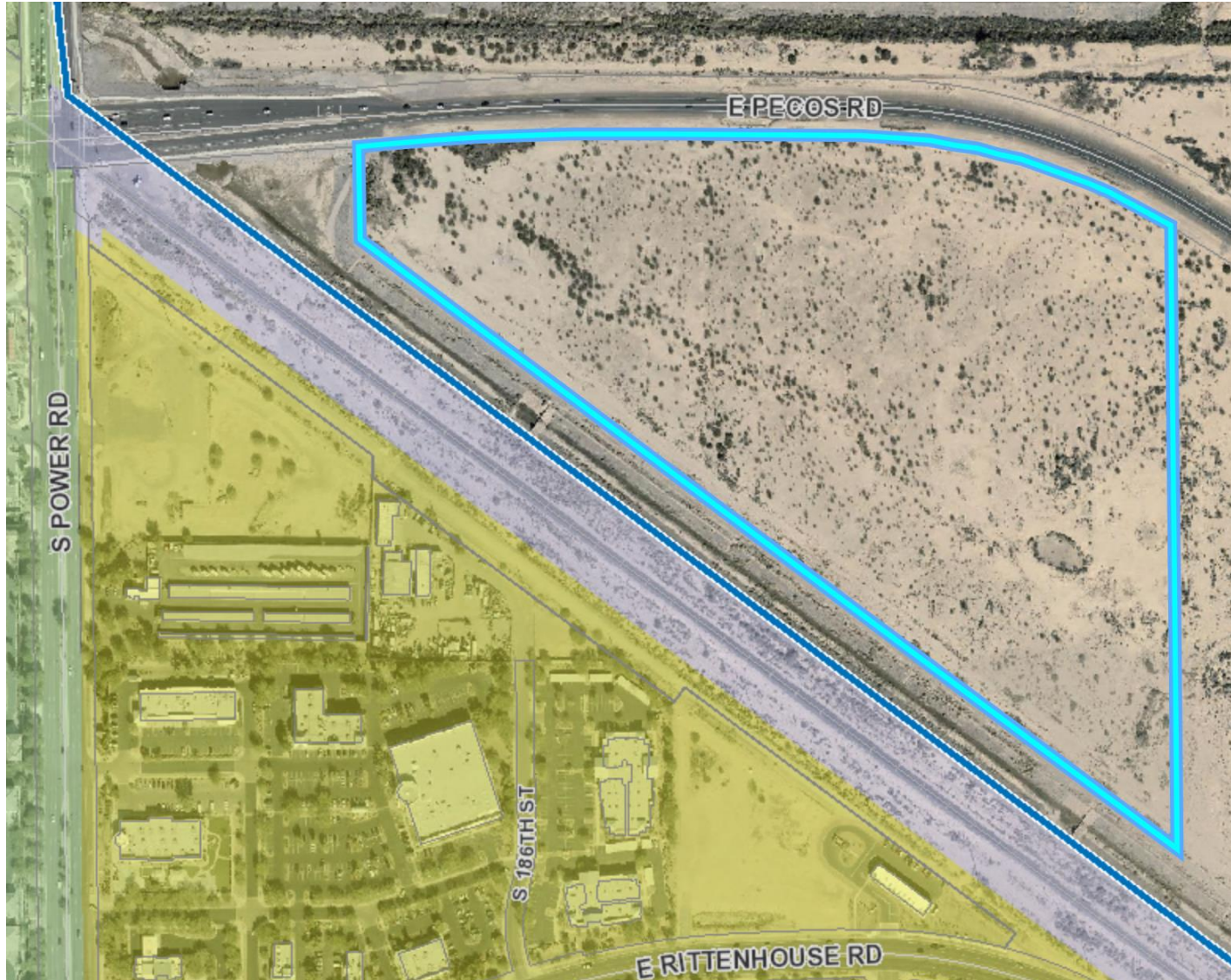


DRB21-00834

Location

- South of Pecos Rd
- East of Power Rd





Request

- Design Review

Purpose

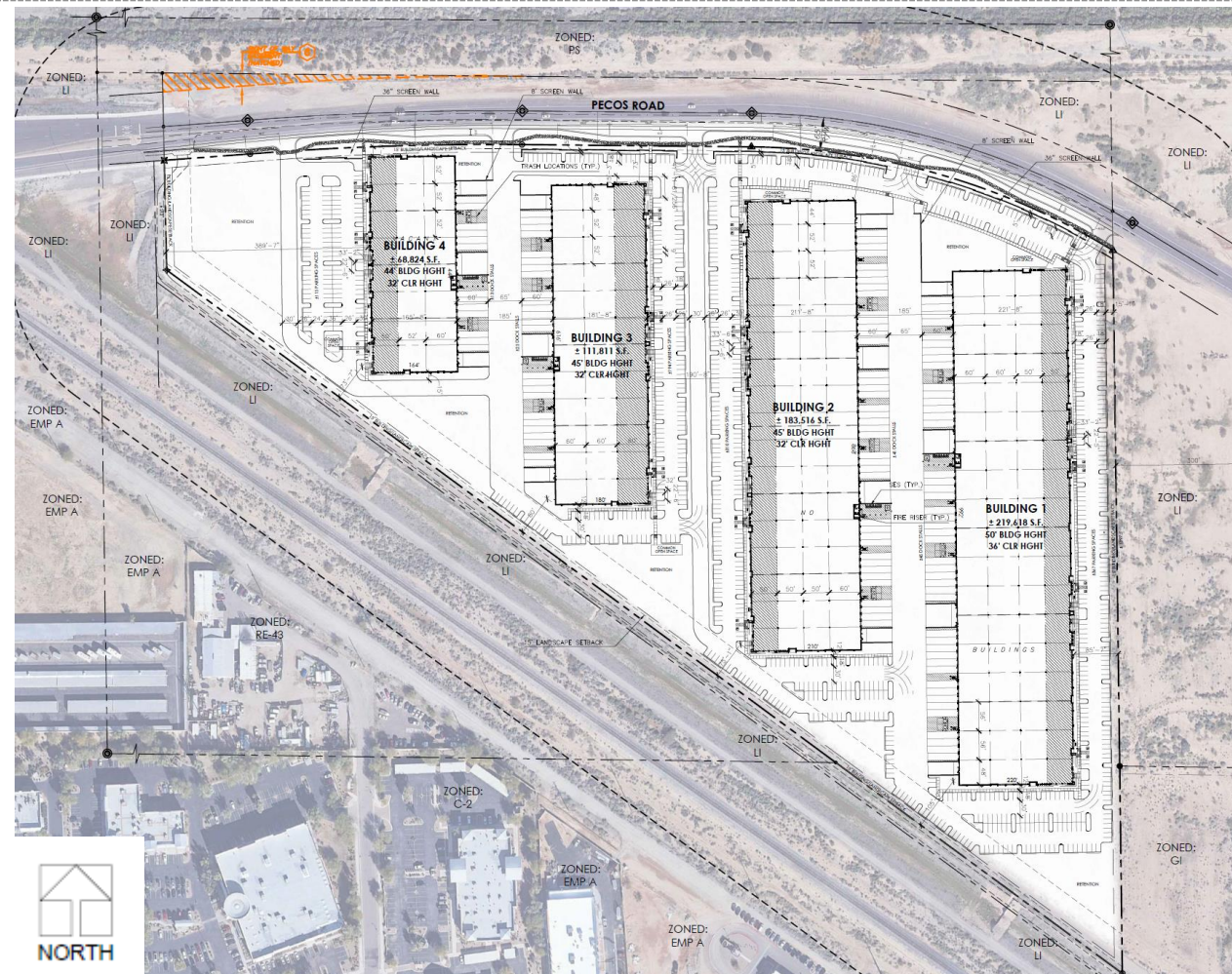
- Four industrial buildings

Site Photo



Looking southeast towards the site from Pecos Road

Site Plan



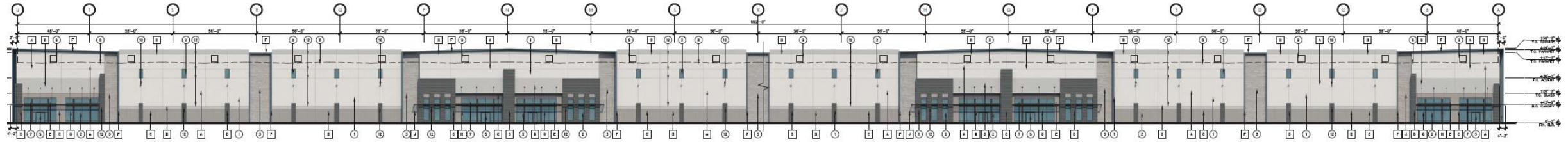
Landscape Plan

PLANT SCHEDULE

SYMBOL	BOTANICAL NAME	COMMON NAME	SIZE	QTY	COMMENTS
TREES					
	<i>Acacia Anura</i>	Malga	24" Box	15	Std Trunk Dense Canopy
	<i>Acacia Salicina</i>	Willow Acacia	15 Gal 24" Box	20 21	Std Trunk Dense Canopy
	<i>Eucalyptus papuana</i>	'Ghost Gum' Eucalyptus	24" Box	33	Multi-Trunk Dense Canopy
	<i>Casahuate calceolaco</i>	Casahuate	24" Box	54	Multi-Trunk Dense Canopy
	<i>Pistacia Red Push'</i>	'Red Push' Pistache	24" Box	15	Std Trunk Dense Canopy
	<i>Prosopis Hybrid</i> 'AZT' or 'Phoenix'	Hybrid Mesquite	24" Box	4	Multi-Trunk Dense Canopy
	<i>Quercus virginiana</i>	Southern Live Oak	36" Box	123	Multi-Trunk Baseline Tree
	<i>Sophora secundiflora</i>	Texas Mountain Laurel	15 Gal	31	Multi-Trunk Dense Canopy
	<i>Juniper parvifolia</i>	Evergreen Elm	24" Box	35	Std Trunk Dense Canopy
ACCENTS & VINES					
	<i>Bougainvillea 'Torch Glow'</i>	'Torch Glow' Bougainvillea	5-Gal	165	As Per Plan
	<i>Bouteloua 'Blonde Ambition'</i>	'Blonde Ambition' Grass	5-Gal	122	As Per Plan
	<i>Dasylirion wheeleri</i>	Desert Spoon	5-Gal	8	As Per Plan
	<i>Hesperaloe parviflora</i>	Giant Hesperaloe	5-Gal	64	As Per Plan
	<i>Hesperaloe parviflora</i>	Brake Lights Red Yucca	5-Gal	562	As Per Plan
	<i>Opuntia 'Kelly's Choice'</i>	'Kelly's Choice' Prickly Pear	5-Gal	126	As Per Plan
	<i>Chamaecyparis humilis</i>	Mediterranean Fan Palm	5-Gal	8	Multi-Trunk
	<i>Aloe barbadensis</i>	Medicine Aloe	5-Gal	166	Yellow Flower
SHRUBS					
	<i>Dodonaea viscosa</i>	Hopseed Bush	5-Gal	69	As Per Plan
	<i>Eriophila 'Winter Blaze'</i>	'Winter Blaze' Eru	5-Gal	211	As Per Plan
	<i>Justicia californica</i>	Chuparosa	5-Gal	24	As Per Plan
	<i>Larrea tridentata</i>	Creosote	5-Gal	51	As Per Plan
	<i>Leucophyllum langhansiae</i>	'Lyons Legacy' Sage	5-Gal	439	As Per Plan
	<i>Leucophyllum langhansiae</i>	'Rio Bravo' Sage	5-Gal	362	As Per Plan
	<i>Ruellia peninsularis</i>	Baja Ruellia	5-Gal	331	As Per Plan
	<i>Stenandria chinensis</i>	Joshiba	5-Gal	51	As Per Plan
	<i>Tacoma x 'Bells of Fire'</i>	Bells of Fire	5-Gal	180	As Per Plan
	<i>Tacoma x 'Orange Jubilee'</i>	Orange Jubilee Vine	5-Gal	121	As Per Plan
GROUND COVERS					
	<i>Acacia 'Desert Carpet'</i>	Desert Carpet Acacia	1-Gal	287	As Per Plan
	<i>Aloe 'Blue Elf'</i>	'Blue Elf' Aloe	1-Gal	80	As Per Plan
	<i>Callistemon 'Little John'</i>	'Little John' Bottle Brush	1-Gal	192	As Per Plan
	<i>Eriophila 'Outback Sunrise'</i>	'Outback Sunrise' Eru	1-Gal	545	As Per Plan
	<i>Eriocaulon lanicifolia</i>	Turpentine Bush	1-Gal	434	As Per Plan
	<i>Lantana montevidensis</i>	Purple Trailing Lantana	1-Gal	434	As Per Plan
MISCELLANEOUS					
	Decomposed Granite - (Size: 1/2" Screened - Color: Mahogany Brown) 2" depth in all planting areas (typ)				
	Decomposed Granite - (Size: 3" Minus - Color: Express Camel) 2" depth in all planting areas (typ)				

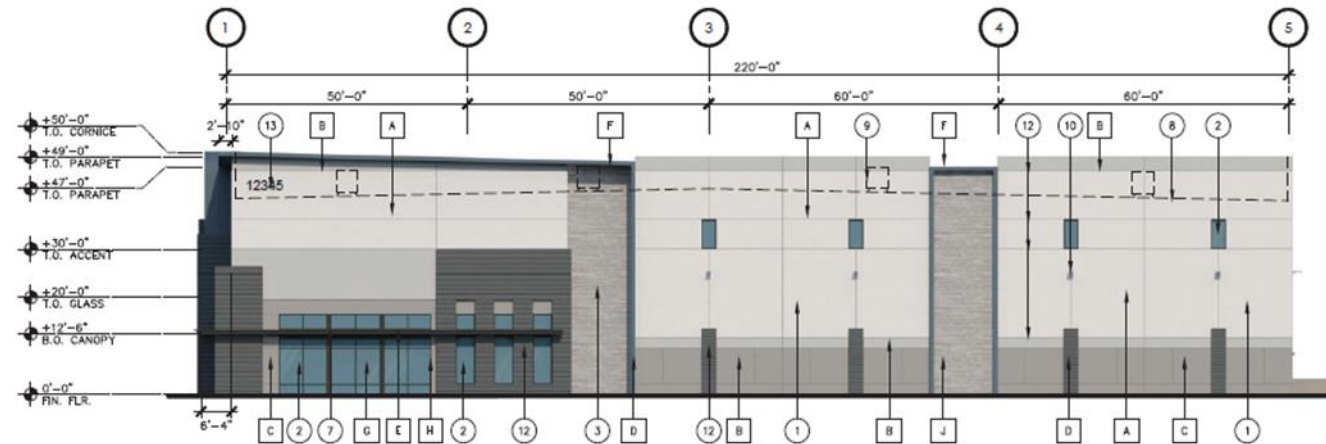


Elevations – Building 1



BUILDING 1 - EAST ELEVATION

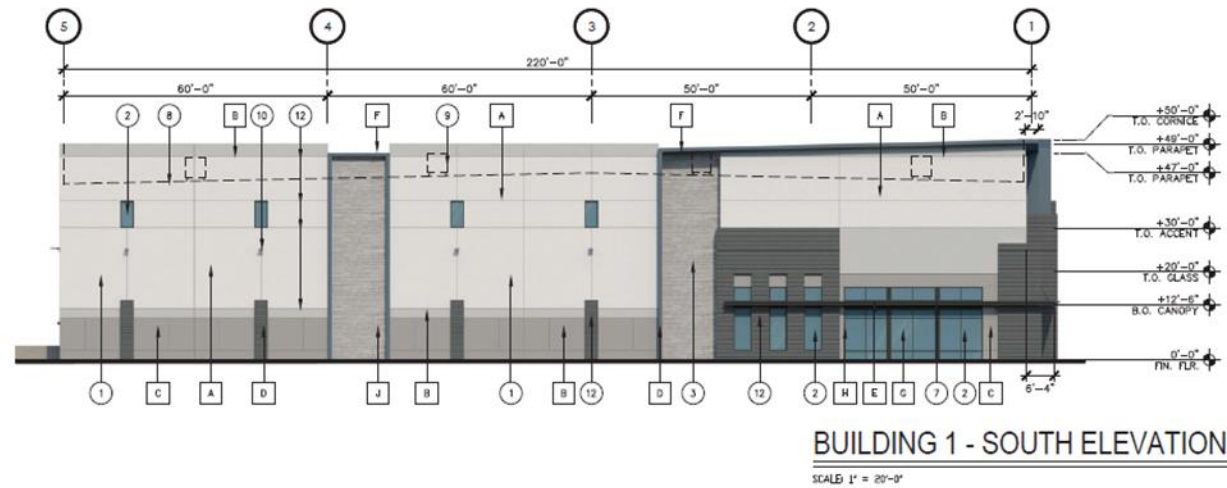
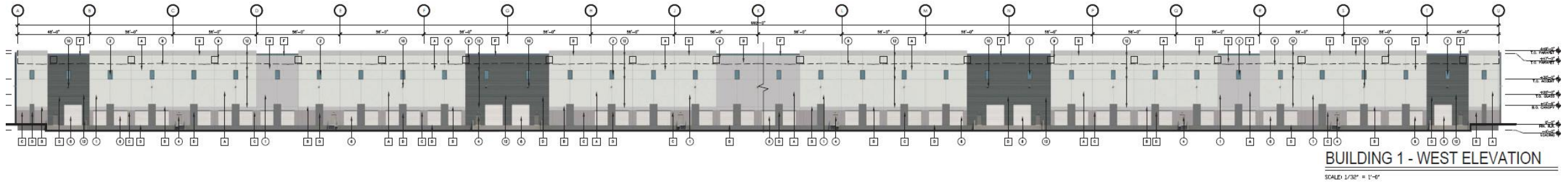
SCALE: 1/32" = 1'-0"



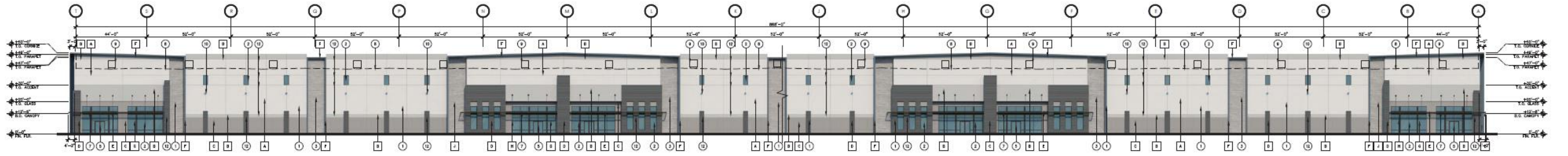
BUILDING 1 - NORTH ELEVATION

SCALE: 1" = 20'-0"

Elevations – Building 1

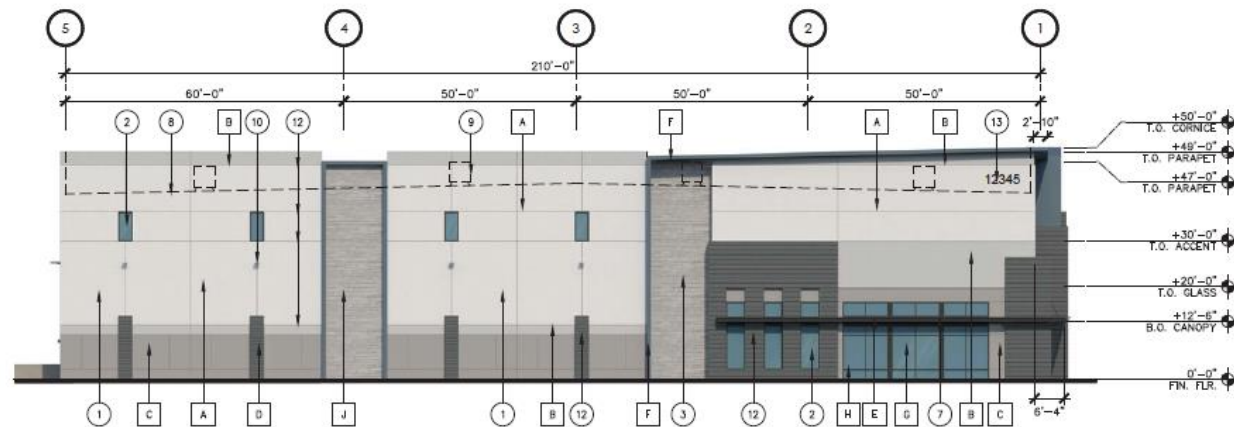


Elevations – Building 2



BUILDING 2 - WEST ELEVATION

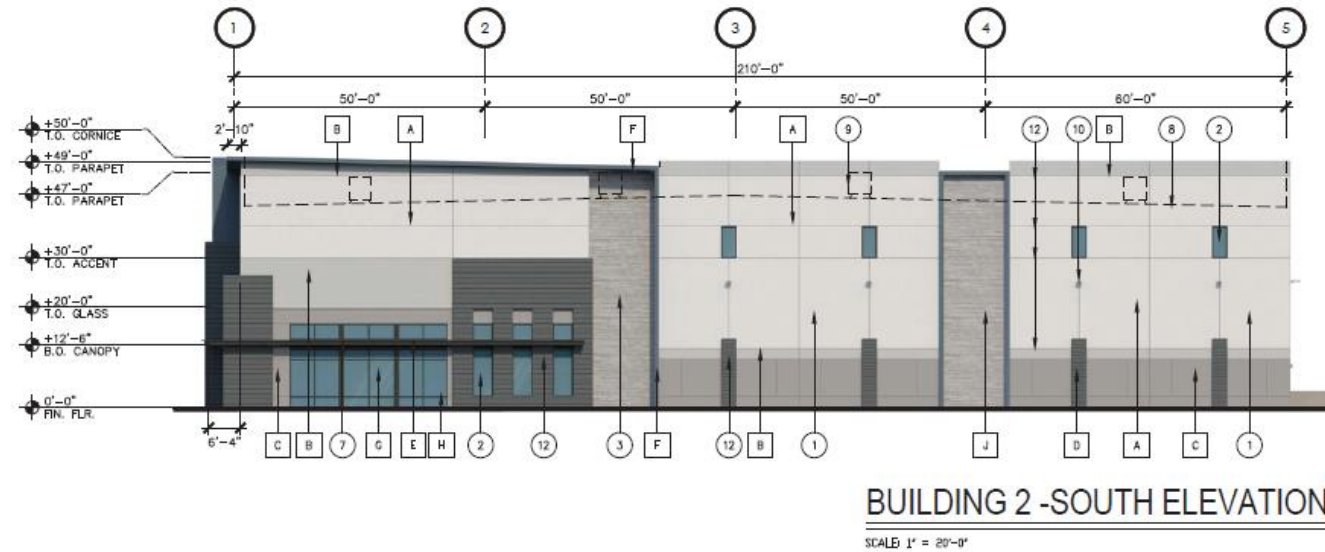
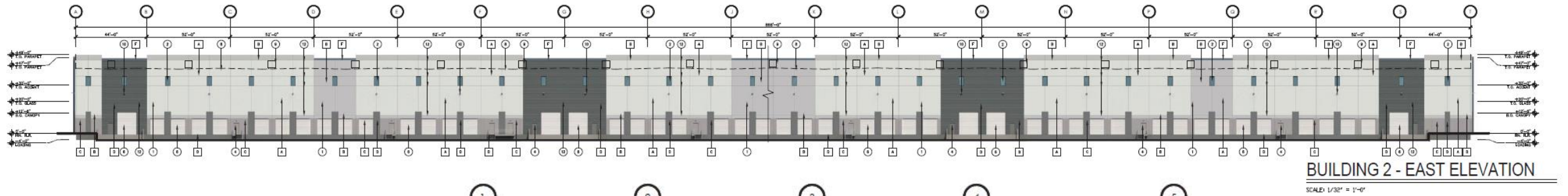
SCALE: 1/32" = 1'-0"



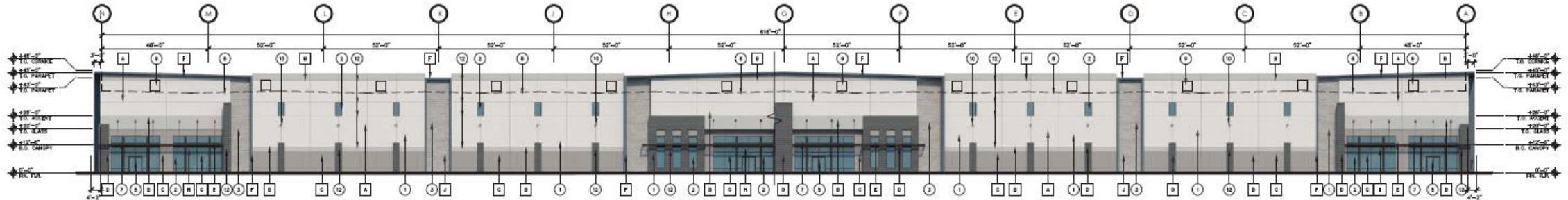
BUILDING 2 - NORTH ELEVATION

SCALE: 1" = 20'-0"

Elevations – Building 2

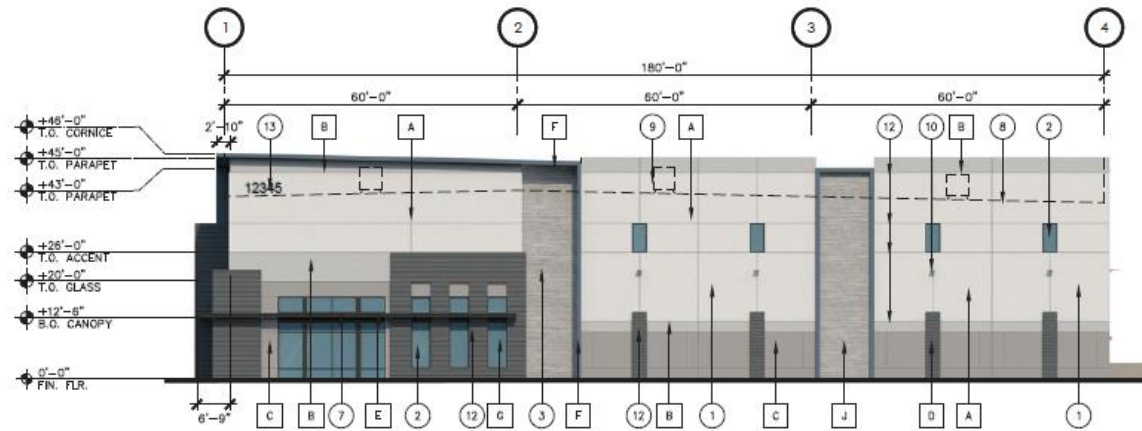


Elevations – Building 3



BUILDING 3 - EAST ELEVATION

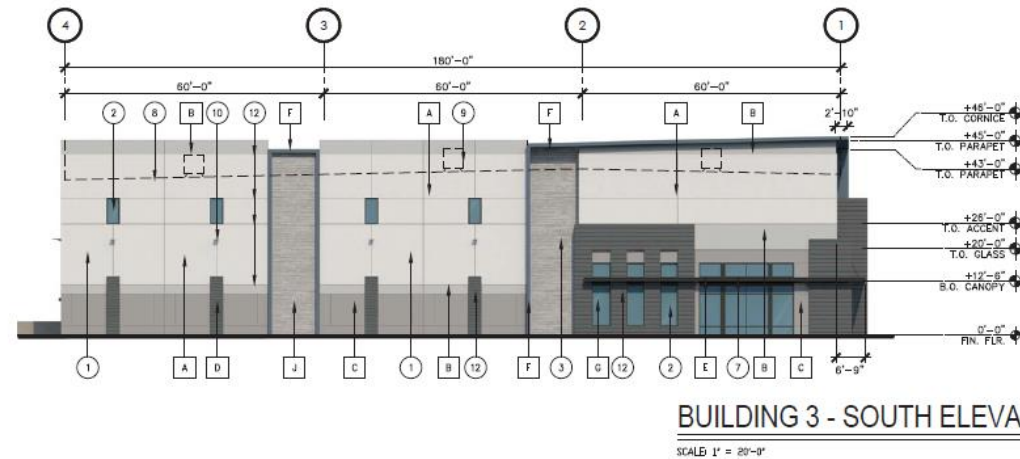
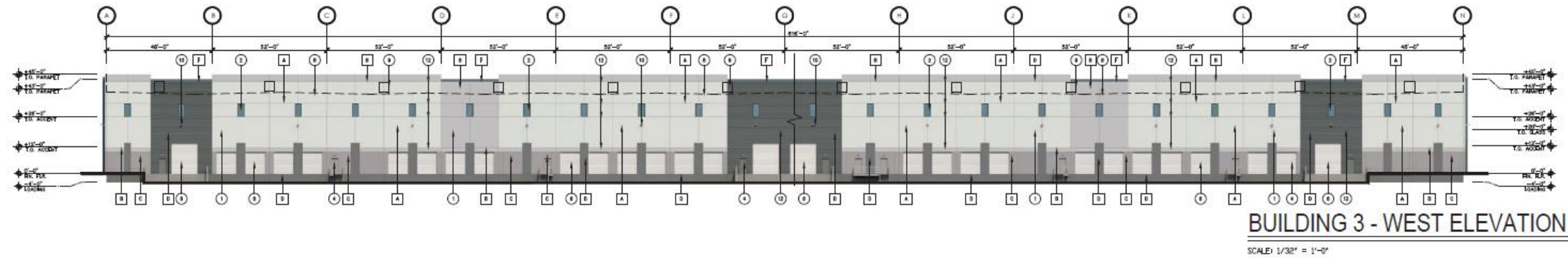
SCALE: 1/32" = 1'-0"



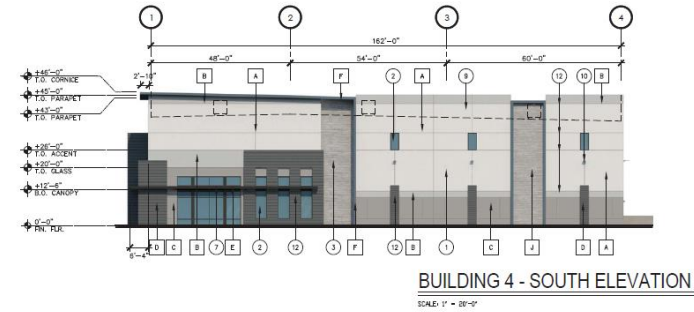
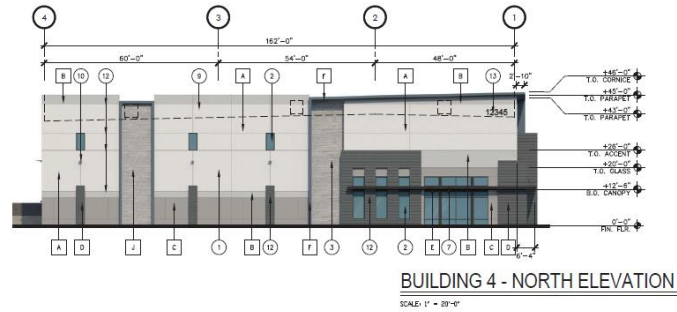
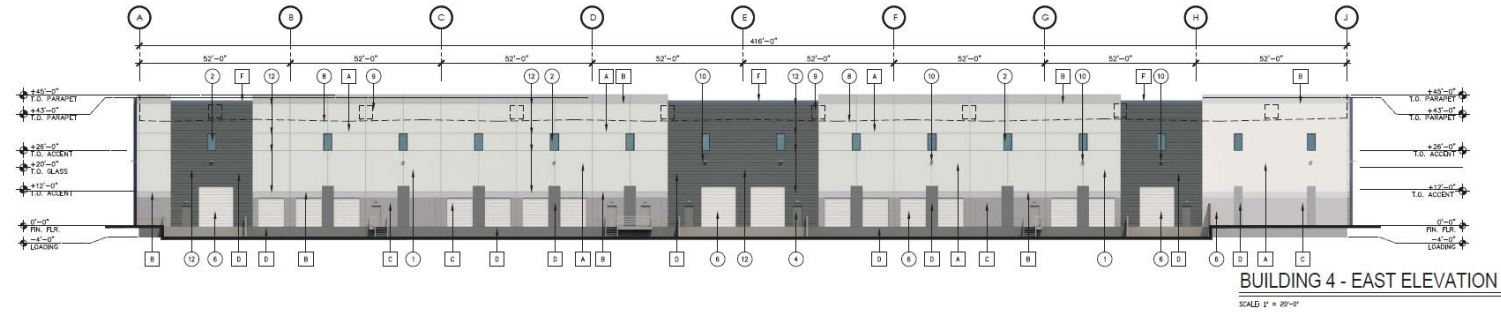
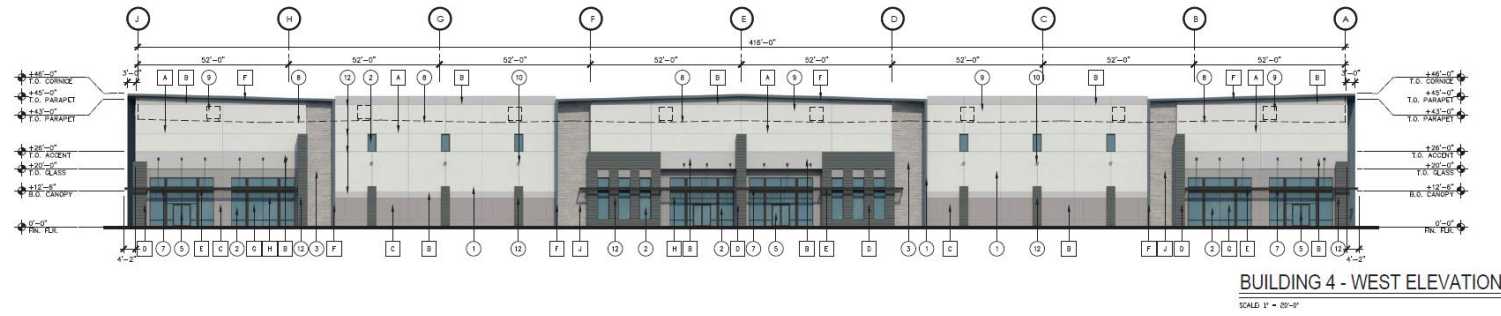
BUILDING 3 - NORTH ELEVATION

SCALE: 1" = 20'-0"

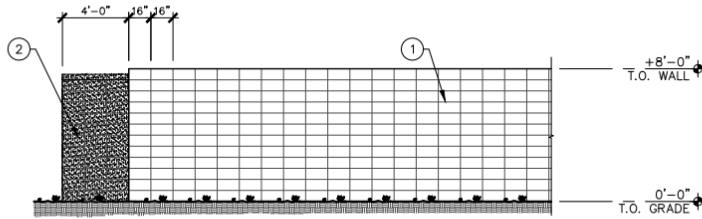
Elevations – Building 3



Elevations – Building 4

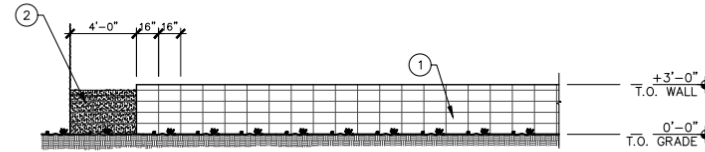


Elevations – Site Walls



- 8" SMOOTH FACE CMU
– SEE ELEVATIONS FOR COURSING AND PATTERN
- 8" SPLIT FACE CMU
– SEE ELEVATIONS FOR COURSING AND PATTERN. CONTINUE SPLIT FACE BLOCK ONE COURSE BELOW FINISH GRADE – MIN.

NOTE:
A. SEE STRUCTURAL FOR REINFORCING.
B. SEE ELEVATION SHEETS A4.01 SERIES FOR COLOR & FINISH DESIGNATIONS.
C. TYPICAL WALL ELEVATION FOR 8'-0" SCREEN WALL.



- 8" SMOOTH FACE CMU
– SEE ELEVATIONS FOR COURSING AND PATTERN
- 8" SPLIT FACE CMU
– SEE ELEVATIONS FOR COURSING AND PATTERN. CONTINUE SPLIT FACE BLOCK ONE COURSE BELOW FINISH GRADE – MIN.

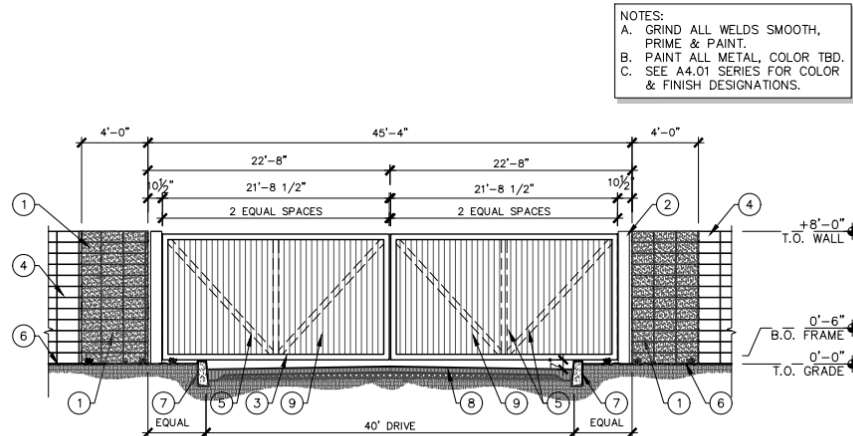
NOTE:
A. SEE STRUCTURAL FOR REINFORCING.
B. SEE ELEVATION SHEETS A4.01 SERIES FOR COLOR & FINISH DESIGNATIONS.
C. TYPICAL WALL ELEVATION FOR 3'-0" SCREEN WALL.

SCREEN WALL AT TRUCK COURT

SCALE: 3/16"=1'-0"

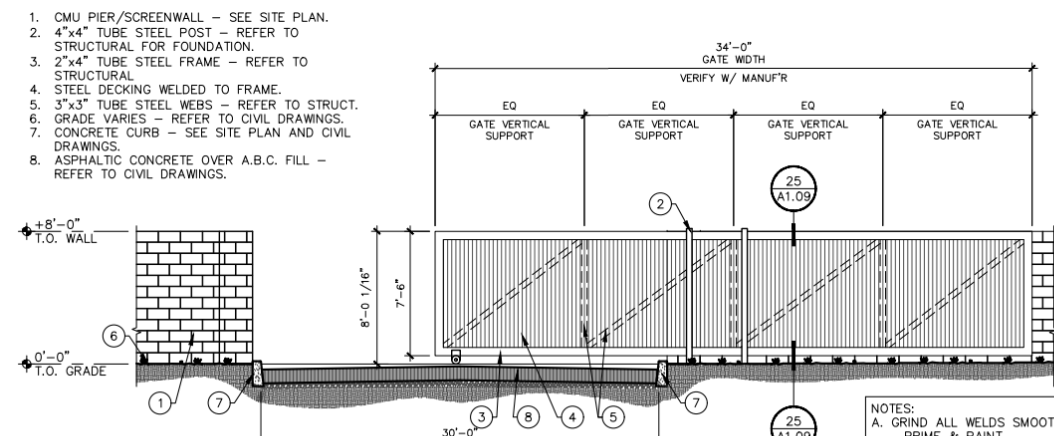
SCREEN WALL AT PARKING

SCALE: 3/16"=1'-0"



NOTES:
A. GRIND ALL WELDS SMOOTH, PRIME & PAINT.
B. PAINT ALL METAL, COLOR TBD.
C. SEE A4.01 SERIES FOR COLOR & FINISH DESIGNATIONS.

- SPLIT-FACE CMU SCREEN WALL – SEE SITE PLAN
- 8"x8" TUBE STEEL POST W/ 4 #5 VERTICAL REBAR & GROUT. PROVIDE WHEEL AT THE END OF THE GATE. INSTALL (3) HEAVY DUTY HINGES WELDED TO FRAME AND CHANNEL – PAINT TO MATCH ADJ. SURFACE.
- 5"x5" TUBE STEEL FRAME.
- SMOOTH-FACE CMU SCREEN WALL – SEE SITE PLAN
- 3"x3" TUBE STEEL WEBS.
- GRADE VARIES – SEE CIVIL DRAWINGS.
- CONCRETE CURB – SEE SITE PLAN AND CIVIL DRAWINGS.
- ASPHALTIC CONCRETE OVER A.B.C. FILL – SEE CIVIL DRAWINGS.
- 1-3/8" CORRUG'D STEEL DECKING



NOTES:
A. GRIND ALL WELDS SMOOTH, PRIME & PAINT.
B. PAINT ALL METAL, COLOR TBD.

SECURITY GATE

SCALE: 3/16"=1'-0"

SECURITY SLIDING GATE - OPAQUE

SCALE: 3/16"=1'-0"

Rendering



Rendering



Rendering



Color and Material Palette

MATERIAL SCHEDULE

PAINT:

- A** MFR: SHERWIN WILLIAMS
COLOR: (OR APPROVED EQUAL)
SW 6518 – SKI SLOPE, LRV: 78
- B** MFR: SHERWIN WILLIAMS
COLOR: (OR APPROVED EQUAL)
SW 7073 – NETWORK GRAY, LRV: 37
- C** MFR: SHERWIN WILLIAMS
COLOR: (OR APPROVED EQUAL)
SW 6277 – SPECIAL GRAY, LRV: 19
- D** MFR: SHERWIN WILLIAMS
COLOR: (OR APPROVED EQUAL)
SW 9645 – BIG DIPPER, LRV: 6
- E** MFR: DUNN EDWARDS
COLOR: (OR APPROVED EQUAL)
DE 6364 – CAVERNOUS, LRV: 8
- F** MFR: DUNN EDWARDS
COLOR: (OR APPROVED EQUAL)
DE 7602 – INDIGO BATIK, LRV: 8

ALUMINUM STOREFRONT / GLAZING:

- G** MFR: VIRACON (OR APPROVED EQUAL)
TYPE: 1" INSULATED, REFLECTIVE
COLOR: VS26-08 SOLAR BLUE
- H** MFR: ARCADIA (OR APPROVED EQUAL)
TYPE: ANODIZED ALUMINUM
COLOR: AB-7, STANDARD DARK BRONZE

ACCENT PANEL:

- J** MFR: BOARD FORM CONCRETE
(OR APPROVED EQUAL)
STYLE: RANDOM WIDTH WOOD PLANKS
FINISH: NATURAL



J A F H B D E G C

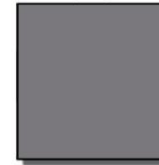
A



B



C



D



E



F



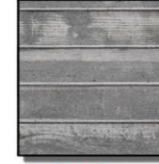
G



H



J



DLR Group

POWER INDUSTRIAL



Newport Commercial

10.01.2021

Lighting

SOLID STATE AREA LIGHTING RAZAR SERIES-LED



RAZAR

(MODELS: RZRM, RZR, RZR-G & RZR-MAF*)

PATENT PENDING

COMPASS

CUSO

SLIM LED AC/EMERGENCY OUTDOOR LIGHT

FEATURES

- Includes self-diagnostic/self-test feature to monitor proper operation
- Quick installation
- Universal 120-277VAC input, 60Hz.
- Includes long-life 7.2V Nickel Cadmium battery for UL recognized 90 minute operation
- Full re-charge within 24 hours
- Provided with water-proof test switch and AC-On indicator
- 0°C to 50°C Standard Model, -25°C to 50°C with optional heater
- UL924 and Wet Location Listed



DATE: _____ LOCATION: _____
TYPE: _____ PROJECT: _____
CATALOG #: _____

tradeSELECT



RELATED PRODUCTS

- [Exit & Message Signs](#)
- [Emergency Lighting Units](#)
- [Battery Packs](#)

SOLID STATE AREA LIGHTING RAZAR WALLMOUNT-LED

SPECIFICATIONS




FIGURE	A	B	C
RZR-W1	9.75" (248mm)	12" (305mm)	6" (152mm)
RZR-W1-EM	11" (280mm)	14" (356mm)	6.5" (165mm)

RZR-WM1

PATENT PENDING

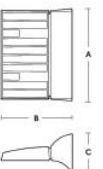


FIGURE	A	B	C
RZR-W2	16" (406mm)	12" (305mm)	6" (152mm)
RZR-W2-EM	16" (406mm)	14" (356mm)	6.5" (165mm)

RZR-WM2

PATENT PENDING

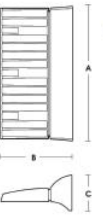


FIGURE	A	B	C
RZR-W3	25" (635mm)	12" (305mm)	6" (152mm)
RZR-W3-EM	25" (635mm)	14" (356mm)	6.5" (165mm)

RZR-WM3

PATENT PENDING

Design Guidelines

Section 11-7-3

✓	Defined primary entrances
✓	More than 1 color on all elevations
✓	All visible facades incorporate details
✗	Roof articulation
✗	No more than 50% of each facade is covered with a single material

Alternative Compliance

Minimum vertical modulation is 2 ft or 1/10 the wall height

- *Alternative is more aesthetically harmonious and complimentary to the overall design*

No more than 50% of each facade shall be covered with one material

- *Alternative is more aesthetically harmonious and complimentary to the overall design*

Summary

Findings

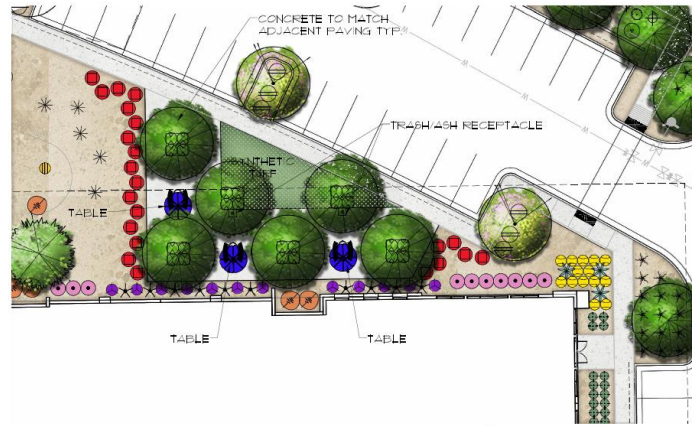
- ✓ Staff is seeking your review and recommendation on the following:
 - ✓ Proposed building elevations
 - ✓ Alternative compliance requests



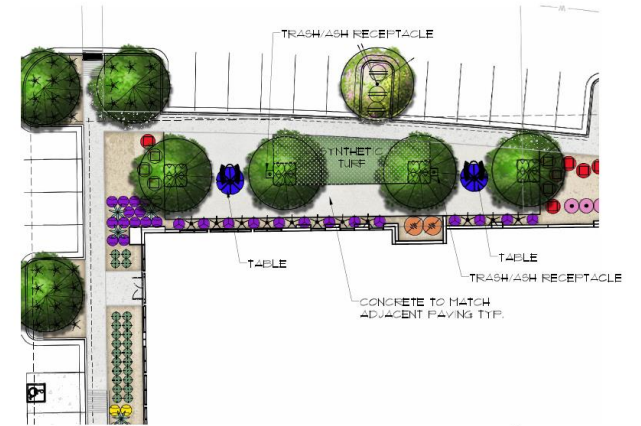
DESIGN REVIEW BOARD

October 12, 2021

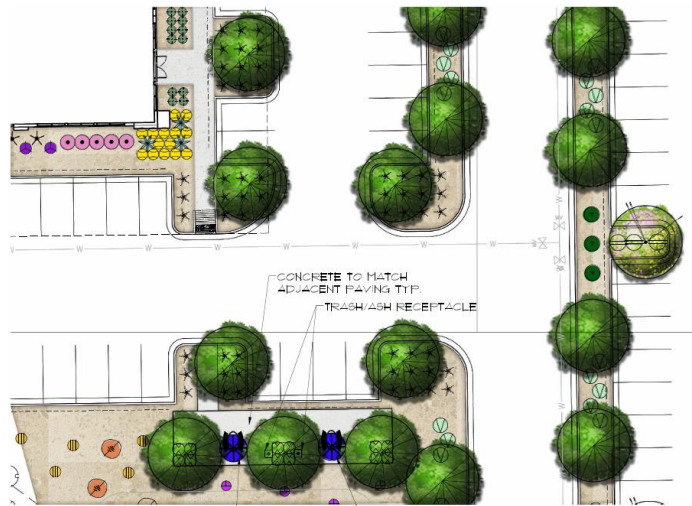
Landscape Plan



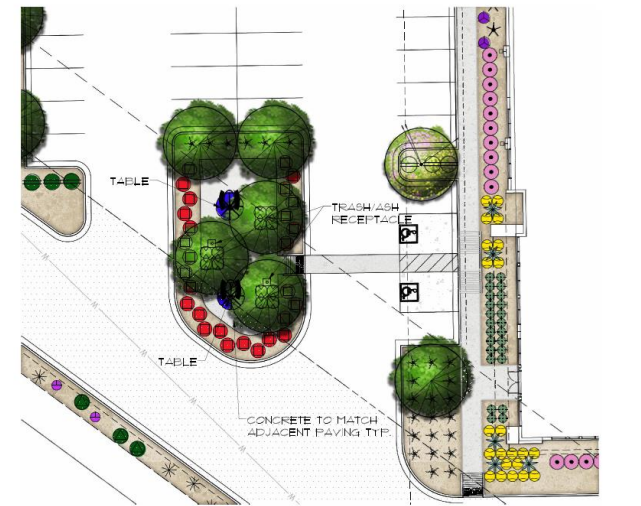
BUILDING 1 PLAZA/Common AREA
SCALE: 1/16"=1'-0"
0 4 8 16 32 NORTH



BUILDING 2 PLAZA/Common AREA
SCALE: 1/16"=1'-0"
0 4 8 16 32 NORTH



BUILDING 3 PLAZA/Common AREA
SCALE: 1/16"=1'-0"
0 4 8 16 32 NORTH



BUILDING 4 PLAZA/Common AREA
SCALE: 1/16"=1'-0"
0 4 8 16 32 NORTH