

BUILDING 1 - FLOOR PLAN

SCALE: 1/32" = 1'-0"

KEYNOTES (PLAN)

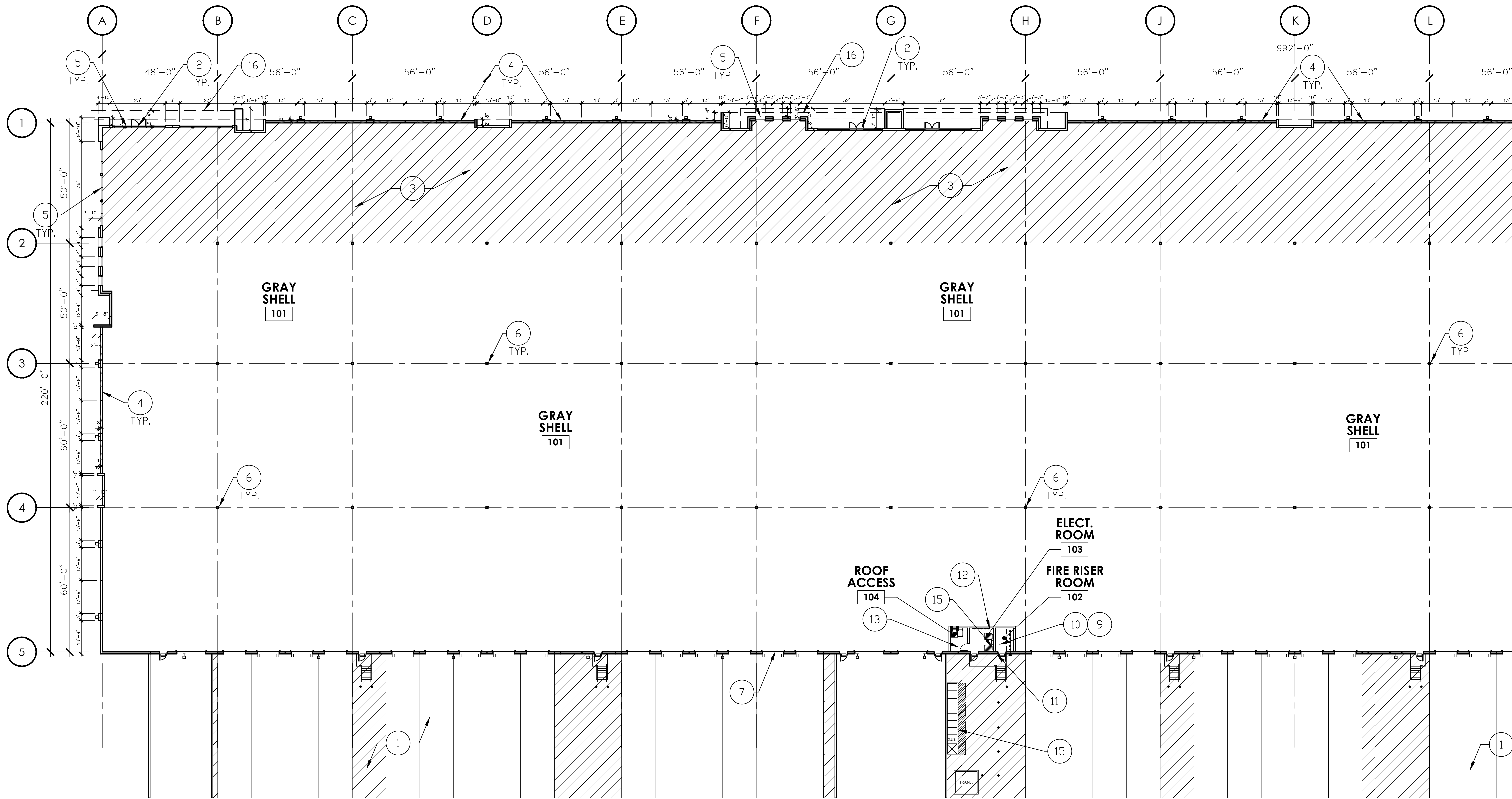
NOTE: THE KEYNOTES LISTED BELOW ARE TYPICAL TO THE BUILDINGS AND MAY NOT BE APPLICABLE AND/OR REFERENCED ON ALL SHEETS.

1. CONCRETE SLAB OVER ABC ON GRADE - SLOPE AWAY FROM BUILDING - SEE SITE PLAN FOR FINISH & CIVIL FOR GRADES - 2% MAX.
2. DOUBLE ENTRY DOORS W/ANODIZED ALUMINUM STOREFRONT SYSTEM.
3. CONCRETE SLAB OVER VAPOR BARRIER (15 MIL. MIN.) ON ABC - REFER TO STRUCTURAL DRAWINGS, SOILS REPORT & SPECIFICATIONS. (HATCHED AREA)
4. PAINTED CONCRETE TILT-UP PANEL - SEE BUILDING ELEVATIONS FOR MATERIAL SCHEDULE.
5. 1" GLAZING IN ANODIZED ALUMINUM SYSTEM - SEE BUILDING ELEVATIONS FOR MATERIAL SCHEDULE.
6. HSS COLUMN - SEE STRUCTURAL.
7. INDEPENDENT ROOF AND OVERFLOW DRAIN LEADERS - ROOF DRAIN AND OVERFLOW DRAIN LEADER TO DAYLIGHT AT FACE OF WALL.
8. NOT USED
9. FIRE RISER LOCATION - SEE FIRE SPRINKLER DRAWINGS.
10. PROVIDE DBX "AS-BUILT DRAWINGS" CABINET ADJACENT TO FIRE RISER LOCATION.
11. KNOX BOX FOR FIRE DEPARTMENT ACCESS WITH ALUMINUM ANNOIDIZED FINISH, RECESS MOUNTED AT 4'-6" A.F.F.

12. PROVIDE 3/4" 4' x 8' FIRE RETARDANT TREATED PLYWOOD TMB - BOTTOM AT 6" A.F.F.
13. ROOF ACCESS HATCH & LADDER.14. 5/8" GYP. BD. BOTH SIDES OVER 8" METAL STUDS W/ 3 1/2" SOUND BATT FULL HEIGHT - GYPSUM SHEATHING FULL HEIGHT ON TENANT SIDE AND ROOF ACCESS ROOM - PROVIDE GYPSUM BD. CEILING IN FIRE RISER ROOM AND ELECTRICAL ROOM AT 10'-0" AFF.
15. ELECTRICAL SERVICE ENTRY SECTION/PANELS.
16. LINE OF CANOPY/BALCONY/OVERHANG ABOVE.

GENERAL NOTES

- A. ON ALL EXPOSED METALWORK WELDS AND BRANDS TO BE GROUND VERY SMOOTH AND PAINTED.
- B. ALL ROOF MOUNTED MECHANICAL EQUIPMENT SHALL BE FULLY SCREENED BY PARAPET WALLS EQUAL TO OR GREATER THAN, THE HIGHEST POINT ON THE MECHANICAL EQUIPMENT.



BUILDING 1 - PARTIAL FLOOR PLAN

SCALE: 1" = 20'-0"

KEYNOTES (PLAN)

NOTE: THE KEYNOTES LISTED BELOW ARE TYPICAL TO THE BUILDINGS AND MAY NOT BE APPLICABLE AND/OR REFERENCED ON ALL SHEETS.

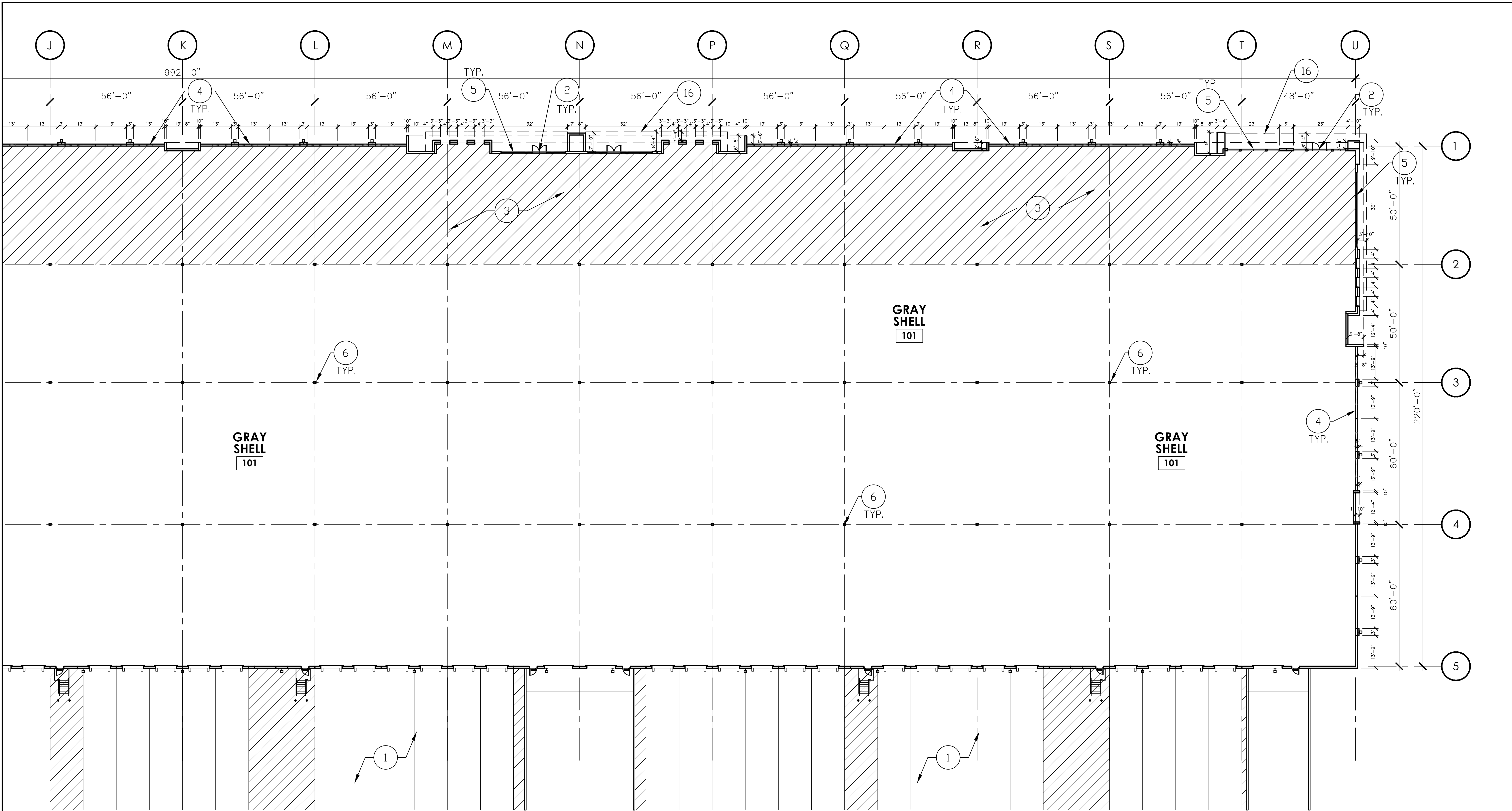
1. CONCRETE SLAB OVER ABC ON GRADE - SLOPE AWAY FROM BUILDING - SEE SITE PLAN FOR FINISH & CIVIL FOR GRADES - 2% MAX.
2. DOUBLE ENTRY DOORS W/ANODIZED ALUMINUM STOREFRONT SYSTEM.
3. CONCRETE SLAB OVER VAPOR BARRIER (15 MIL. MIN.) ON ABC - REFER TO STRUCTURAL DRAWINGS, SOILS REPORT & SPECIFICATIONS. (HATCHED AREA)
4. PAINTED CONCRETE TILT-UP PANEL - SEE BUILDING ELEVATIONS FOR MATERIAL SCHEDULE.
5. 1" GLAZING IN ANODIZED ALUMINUM SYSTEM - SEE BUILDING ELEVATIONS FOR MATERIAL SCHEDULE.
6. HSS COLUMN - SEE STRUCTURAL.
7. INDEPENDENT ROOF AND OVERFLOW DRAIN LEADERS - ROOF DRAIN AND OVERFLOW DRAIN LEADER TO DAYLIGHT AT FACE OF WALL.
8. NOT USED
9. FIRE RISER LOCATION - SEE FIRE SPRINKLER DRAWINGS.
10. PROVIDE DBX "AS-BUILT DRAWINGS" CABINET ADJACENT TO FIRE RISER LOCATION.
11. KNOX BOX FOR FIRE DEPARTMENT ACCESS WITH ALUMINUM ANNOIDIZED FINISH, RECESS MOUNTED AT 4'-6" A.F.F.

12. PROVIDE 3/4" 4' x 8' FIRE RETARDANT TREATED PLYWOOD TMB - BOTTOM AT 6" A.F.F.
13. ROOF ACCESS HATCH & LADDER. 14. 5/8" GYP. BD. BOTH SIDES OVER 8" METAL STUDS W/ 3 1/2" SOUND BATT FULL HEIGHT - GYPSUM SHEATHING FULL HEIGHT ON TENANT SIDE AND ROOF ACCESS ROOM - PROVIDE GYPSUM BD. CEILING IN FIRE RISER ROOM AND ELECTRICAL ROOM AT 10'-0" AFF.
15. ELECTRICAL SERVICE ENTRY SECTION/PANELS.
16. LINE OF CANOPY/BALCONY/OVERHANG ABOVE.

GENERAL NOTES

- A. ON ALL EXPOSED METALWORK WELDS AND BRANDS TO BE GROUND VERY SMOOTH AND PAINTED.
- B. ALL ROOF MOUNTED MECHANICAL EQUIPMENT SHALL BE FULLY SCREENED BY PARAPET WALLS EQUAL TO OR GREATER THAN, THE HIGHEST POINT ON THE MECHANICAL EQUIPMENT.





**BUILDING 1 - PARTIAL FLOOR PLAN**

SCALE: 1" = 20'-0"

**KEYNOTES (PLAN)**

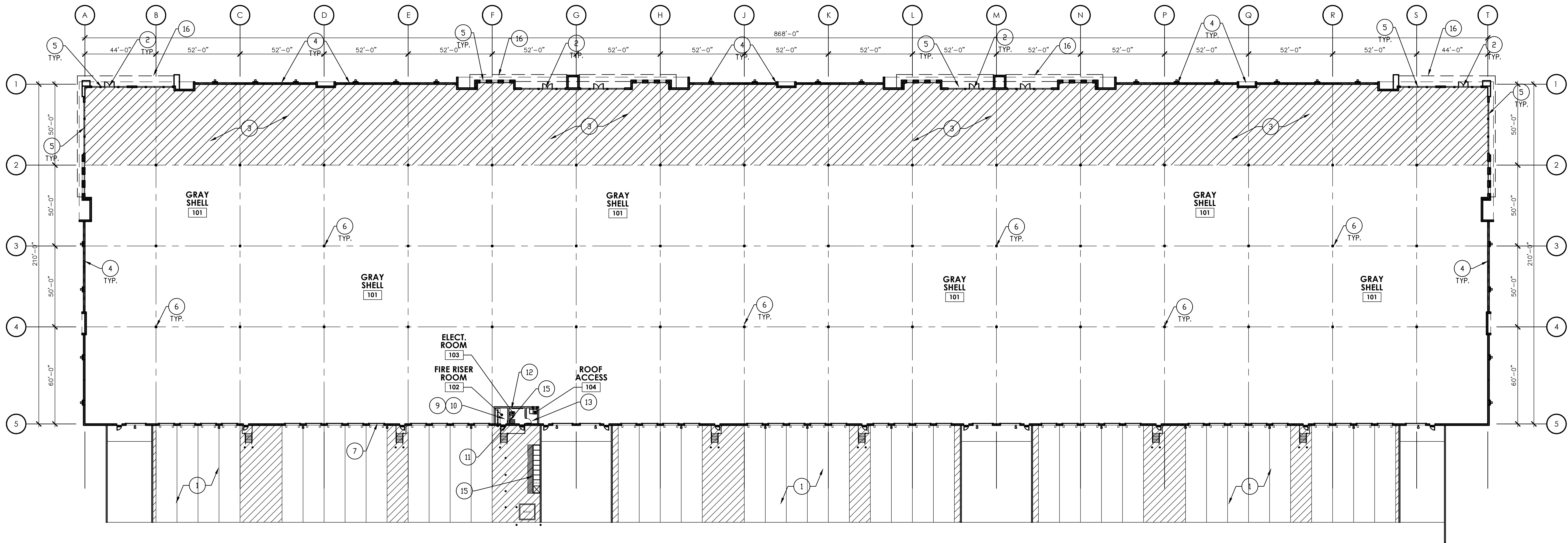
NOTE: THE KEYNOTES LISTED BELOW ARE TYPICAL TO THE BUILDINGS AND MAY NOT BE APPLICABLE AND/OR REFERENCED ON ALL SHEETS.

1. CONCRETE SLAB OVER ABC ON GRADE - SLOPE AWAY FROM BUILDING - SEE SITE PLAN FOR FINISH & CIVIL FOR GRADES - 2% MAX.
2. DOUBLE ENTRY DOORS W/ANODIZED ALUMINUM STOREFRONT SYSTEM.
3. CONCRETE SLAB OVER VAPOR BARRIER (15 MIL. MIN.) ON ABC - REFER TO STRUCTURAL DRAWINGS, SOILS REPORT & SPECIFICATIONS. (HATCHED AREA)
4. PAINTED CONCRETE TILT-UP PANEL - SEE BUILDING ELEVATIONS FOR MATERIAL SCHEDULE.
5. 1" GLAZING IN ANODIZED ALUMINUM SYSTEM - SEE BUILDING ELEVATIONS FOR MATERIAL SCHEDULE.
6. HSS COLUMN - SEE STRUCTURAL.
7. INDEPENDENT ROOF AND OVERFLOW DRAIN LEADERS - ROOF DRAIN AND OVERFLOW DRAIN LEADER TO DAYLIGHT AT FACE OF WALL.
8. NOT USED
9. FIRE RISER LOCATION - SEE FIRE SPRINKLER DRAWINGS.
10. PROVIDE DBX "AS-BUILT DRAWINGS" CABINET ADJACENT TO FIRE RISER LOCATION.
11. KNOX BOX FOR FIRE DEPARTMENT ACCESS WITH ALUMINUM ANNOIDIZED FINISH, RECESS MOUNTED AT 4'-6" A.F.F.

12. PROVIDE 3/4" 4' x 8' FIRE RETARDANT TREATED PLYWOOD TMB - BOTTOM AT 6" A.F.F.
13. ROOF ACCESS HATCH & LADDER.14. 5/8" GYP. BD. BOTH SIDES OVER 8" METAL STUDS W/ 3 1/2" SOUND BATT FULL HEIGHT - GYPSUM SHEATHING FULL HEIGHT ON TENANT SIDE AND ROOF ACCESS ROOM - PROVIDE GYPSUM BD. CEILING IN FIRE RISER ROOM AND ELECTRICAL ROOM AT 10'-0" AFF.
15. ELECTRICAL SERVICE ENTRY SECTION/PANELS.
16. LINE OF CANOPY/BALCONY/OVERHANG ABOVE.

**GENERAL NOTES**

- A. ON ALL EXPOSED METALWORK WELDS AND BRANDS TO BE GROUND VERY SMOOTH AND PAINTED.
- B. ALL ROOF MOUNTED MECHANICAL EQUIPMENT SHALL BE FULLY SCREENED BY PARAPET WALLS EQUAL TO OR GREATER THAN, THE HIGHEST POINT ON THE MECHANICAL EQUIPMENT.



BUILDING 2 - FLOOR PLAN

SCALE: 1/32" = 1'-0"

KEYNOTES (PLAN)

NOTE: THE KEYNOTES LISTED BELOW ARE TYPICAL TO THE BUILDINGS AND MAY NOT BE APPLICABLE AND/OR REFERENCED ON ALL SHEETS.

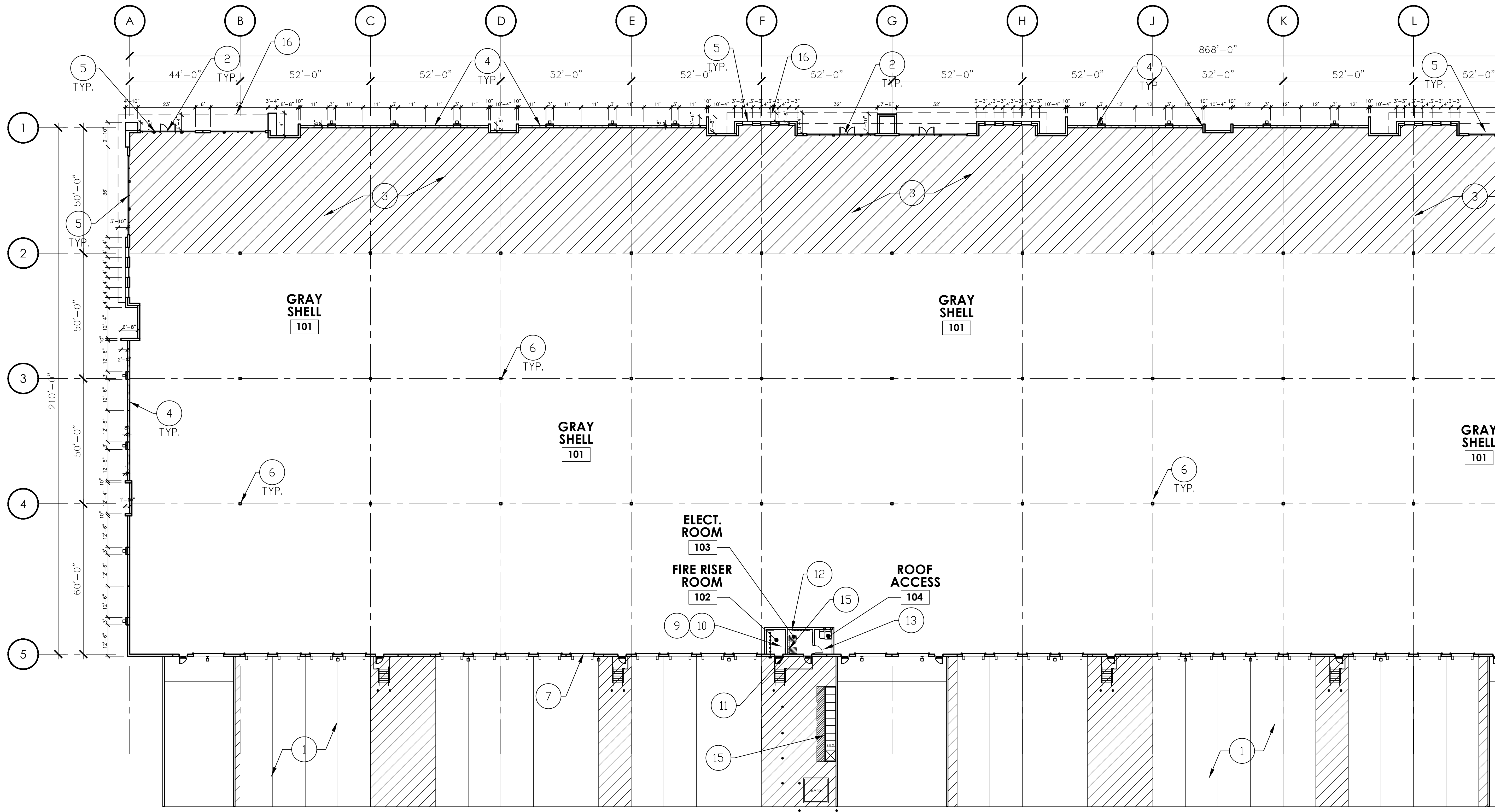
1. CONCRETE SLAB OVER ABC ON GRADE - SLOPE AWAY FROM BUILDING - SEE SITE PLAN FOR FINISH & CIVIL FOR GRADES - 2% MAX.
2. DOUBLE ENTRY DOORS W/ANODIZED ALUMINUM STOREFRONT SYSTEM.
3. CONCRETE SLAB OVER VAPOR BARRIER (15 MIL. MIN.) ON ABC - REFER TO STRUCTURAL DRAWINGS, SOILS REPORT & SPECIFICATIONS. (HATCHED AREA)
4. PAINTED CONCRETE TILT-UP PANEL - SEE BUILDING ELEVATIONS FOR MATERIAL SCHEDULE.
5. 1" GLAZING IN ANODIZED ALUMINUM SYSTEM - SEE BUILDING ELEVATIONS FOR MATERIAL SCHEDULE.
6. HSS COLUMN - SEE STRUCTURAL.
7. INDEPENDENT ROOF AND OVERFLOW DRAIN LEADERS - ROOF DRAIN AND OVERFLOW DRAIN LEADER TO DAYLIGHT AT FACE OF WALL.
8. NOT USED
9. FIRE RISER LOCATION - SEE FIRE SPRINKLER DRAWINGS.
10. PROVIDE DBX "AS-BUILT DRAWINGS" CABINET ADJACENT TO FIRE RISER LOCATION.
11. KNOX BOX FOR FIRE DEPARTMENT ACCESS WITH ALUMINUM ANNOIDIZED FINISH, RECESS MOUNTED AT 4'-6" A.F.F.

12. PROVIDE 3/4" 4' x 8' FIRE RETARDANT TREATED PLYWOOD TMB - BOTTOM AT 6" A.F.F.
13. ROOF ACCESS HATCH & LADDER.14. 5/8" GYP. BD. BOTH SIDES OVER 8" METAL STUDS W/ 3 1/2" SOUND BATT FULL HEIGHT - GYPSUM SHEATHING FULL HEIGHT ON TENANT SIDE AND ROOF ACCESS ROOM - PROVIDE GYPSUM BD. CEILING IN FIRE RISER ROOM AND ELECTRICAL ROOM AT 10'-0" AFF.
15. ELECTRICAL SERVICE ENTRY SECTION/PANELS.
16. LINE OF CANOPY/BALCONY/OVERHANG ABOVE.

GENERAL NOTES

- A. ON ALL EXPOSED METALWORK WELDS AND BRANDS TO BE GROUND VERY SMOOTH AND PAINTED.
- B. ALL ROOF MOUNTED MECHANICAL EQUIPMENT SHALL BE FULLY SCREENED BY PARAPET WALLS EQUAL TO OR GREATER THAN, THE HIGHEST POINT ON THE MECHANICAL EQUIPMENT.





BUILDING 2 - PARTIAL FLOOR PLAN

SCALE: 1" = 20'-0"

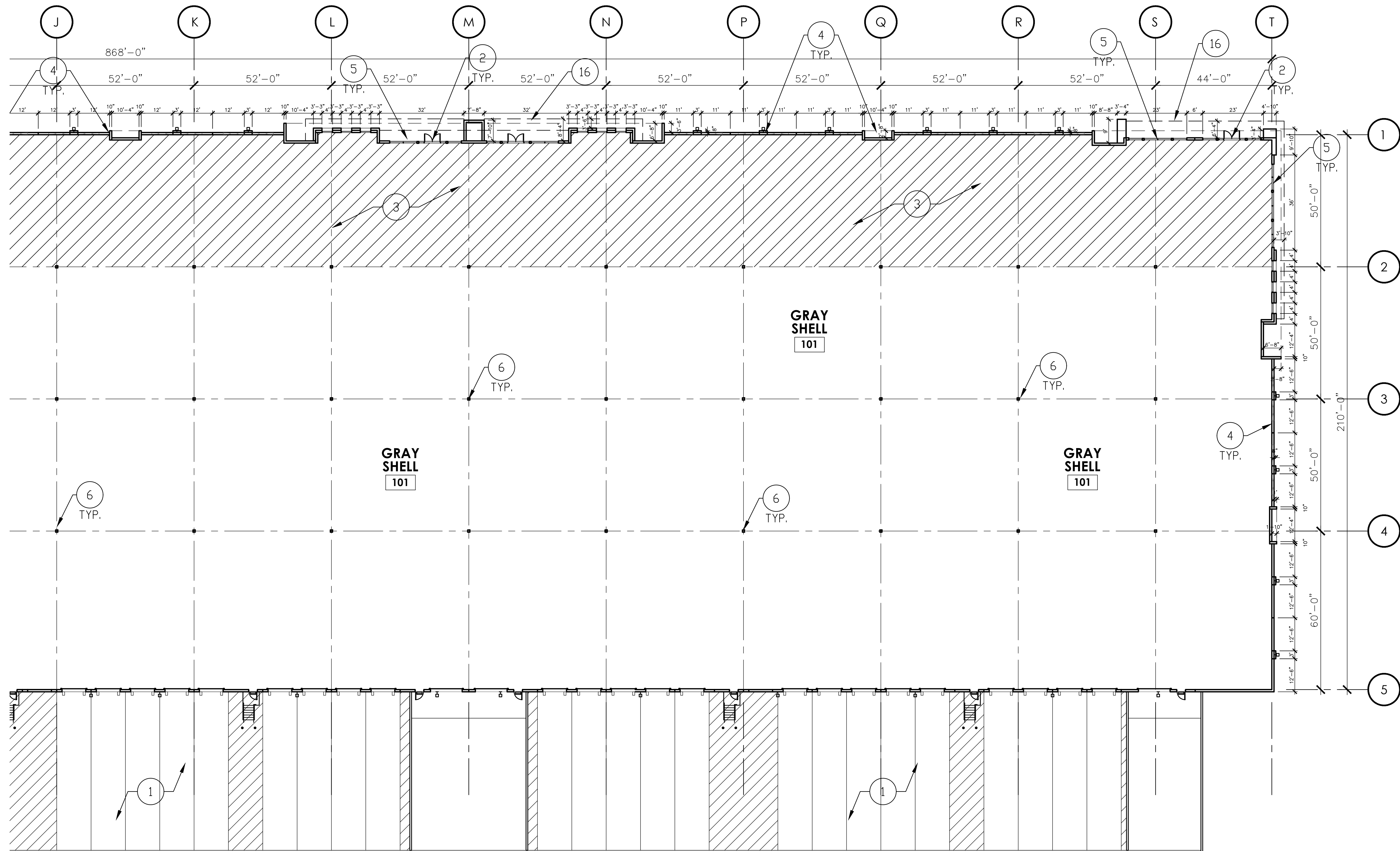
KEYNOTES (PLAN)

NOTE: THE KEYNOTES LISTED BELOW ARE TYPICAL TO THE BUILDINGS AND MAY NOT BE APPLICABLE AND/OR REFERENCED ON ALL SHEETS.

1. CONCRETE SLAB OVER ABC ON GRADE - SLOPE AWAY FROM BUILDING - SEE SITE PLAN FOR FINISH & CIVIL FOR GRADES - 2% MAX.
2. DOUBLE ENTRY DOORS W/ANODIZED ALUMINUM STOREFRONT SYSTEM.
3. CONCRETE SLAB OVER VAPOR BARRIER (15 MIL. MIN.) ON ABC - REFER TO STRUCTURAL DRAWINGS, SOILS REPORT & SPECIFICATIONS. (HATCHED AREA)
4. PAINTED CONCRETE TILT-UP PANEL - SEE BUILDING ELEVATIONS FOR MATERIAL SCHEDULE.
5. 1" GLAZING IN ANODIZED ALUMINUM SYSTEM - SEE BUILDING ELEVATIONS FOR MATERIAL SCHEDULE.
6. HSS COLUMN - SEE STRUCTURAL.
7. INDEPENDENT ROOF AND OVERFLOW DRAIN LEADERS - ROOF DRAIN AND OVERFLOW DRAIN LEADER TO DAYLIGHT AT FACE OF WALL.
8. NOT USED
9. FIRE RISER LOCATION - SEE FIRE SPRINKLER DRAWINGS.
10. PROVIDE DBX "AS-BUILT DRAWINGS" CABINET ADJACENT TO FIRE RISER LOCATION.
11. KNOX BOX FOR FIRE DEPARTMENT ACCESS WITH ALUMINUM ANNOIDIZED FINISH, RECESS MOUNTED AT 4'-6" A.F.F.
12. PROVIDE 3/4" 4' x 8' FIRE RETARDANT TREATED PLYWOOD TMB - BOTTOM AT 6" A.F.F.
13. ROOF ACCESS HATCH & LADDER.14. 5/8" GYP. BD. BOTH SIDES OVER 8" METAL STUDS W/ 3 1/2" SOUND BATT FULL HEIGHT - GYPSUM SHEATHING FULL HEIGHT ON TENANT SIDE AND ROOF ACCESS ROOM - PROVIDE GYPSUM BD. CEILING IN FIRE RISER ROOM AND ELECTRICAL ROOM AT 10'-0" AFF.
15. ELECTRICAL SERVICE ENTRY SECTION/PANELS.
16. LINE OF CANOPY/BALCONY/OVERHANG ABOVE.

GENERAL NOTES

- A. ON ALL EXPOSED METALWORK WELDS AND BRANDS TO BE GROUND VERY SMOOTH AND PAINTED.
- B. ALL ROOF MOUNTED MECHANICAL EQUIPMENT SHALL BE FULLY SCREENED BY PARAPET WALLS EQUAL TO OR GREATER THAN, THE HIGHEST POINT ON THE MECHANICAL EQUIPMENT.



**BUILDING 2 - PARTIAL FLOOR PLAN**

SCALE: 1" = 20'-0"

**KEYNOTES (PLAN)**

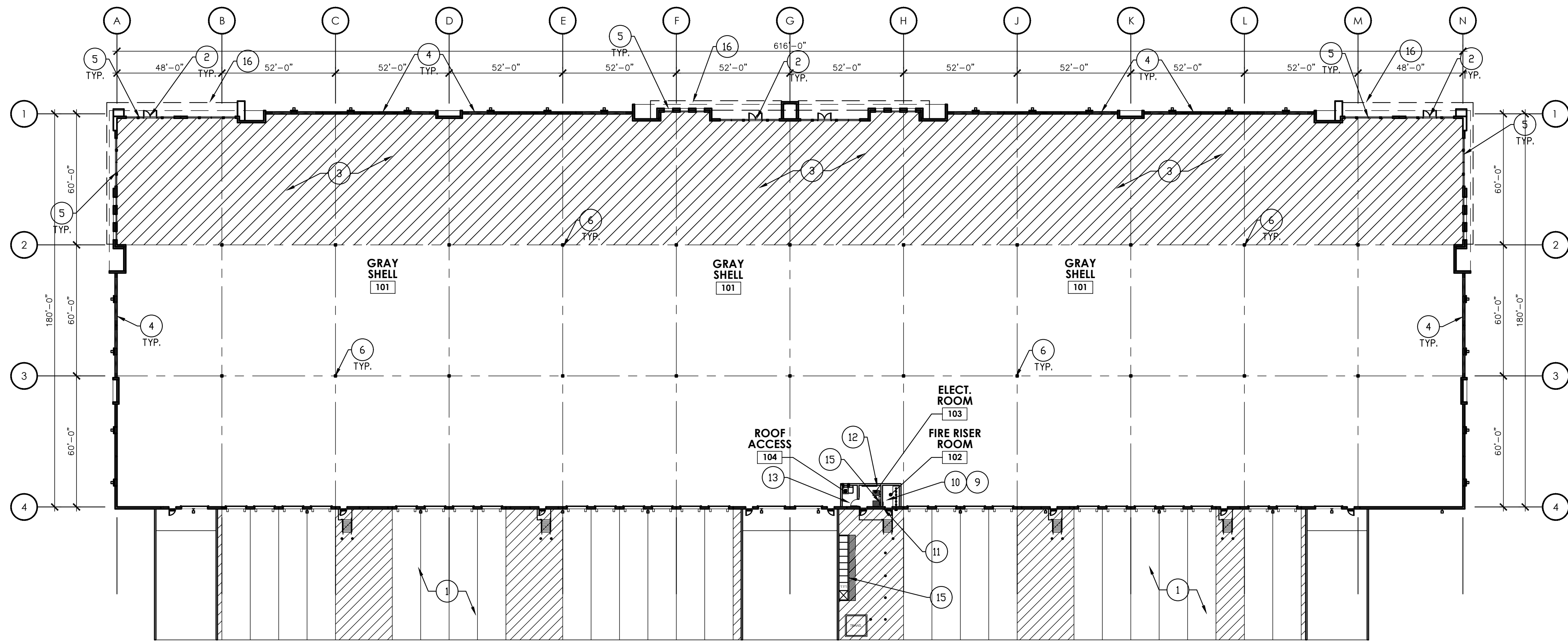
NOTE: THE KEYNOTES LISTED BELOW ARE TYPICAL TO THE BUILDINGS AND MAY NOT BE APPLICABLE AND/OR REFERENCED ON ALL SHEETS.

1. CONCRETE SLAB OVER ABC ON GRADE - SLOPE AWAY FROM BUILDING - SEE SITE PLAN FOR FINISH & CIVIL FOR GRADES - 2% MAX.
2. DOUBLE ENTRY DOORS W/ANODIZED ALUMINUM STOREFRONT SYSTEM.
3. CONCRETE SLAB OVER VAPOR BARRIER (15 MIL. MIN.) ON ABC - REFER TO STRUCTURAL DRAWINGS, SOILS REPORT & SPECIFICATIONS. (HATCHED AREA)
4. PAINTED CONCRETE TILT-UP PANEL - SEE BUILDING ELEVATIONS FOR MATERIAL SCHEDULE.
5. 1" GLAZING IN ANODIZED ALUMINUM SYSTEM - SEE BUILDING ELEVATIONS FOR MATERIAL SCHEDULE.
6. HSS COLUMN - SEE STRUCTURAL.
7. INDEPENDENT ROOF AND OVERFLOW DRAIN LEADERS - ROOF DRAIN AND OVERFLOW DRAIN LEADER TO DAYLIGHT AT FACE OF WALL.
8. NOT USED
9. FIRE RISER LOCATION - SEE FIRE SPRINKLER DRAWINGS.
10. PROVIDE DBX "AS-BUILT DRAWINGS" CABINET ADJACENT TO FIRE RISER LOCATION.
11. KNOX BOX FOR FIRE DEPARTMENT ACCESS WITH ALUMINUM ANNOIDIZED FINISH, RECESS MOUNTED AT 4'-6" A.F.F.
12. PROVIDE 3/4" 4' x 8' FIRE RETARDANT TREATED PLYWOOD TMB - BOTTOM AT 6" A.F.F.
13. ROOF ACCESS HATCH & LADDER.14. 5/8" GYP. BD. BOTH SIDES OVER 8" METAL STUDS W/ 3 1/2" SOUND BATT FULL HEIGHT - GYPSUM SHEATHING FULL HEIGHT ON TENANT SIDE AND ROOF ACCESS ROOM - PROVIDE GYPSUM BD. CEILING IN FIRE RISER ROOM AND ELECTRICAL ROOM AT 10'-0" AFF.
15. ELECTRICAL SERVICE ENTRY SECTION/PANELS.
16. LINE OF CANOPY/BALCONY/OVERHANG ABOVE.

**GENERAL NOTES**

- A. ON ALL EXPOSED METALWORK WELDS AND BRANDS TO BE GROUND VERY SMOOTH AND PAINTED.
- B. ALL ROOF MOUNTED MECHANICAL EQUIPMENT SHALL BE FULLY SCREENED BY PARAPET WALLS EQUAL TO OR GREATER THAN, THE HIGHEST POINT ON THE MECHANICAL EQUIPMENT.





BUILDING 3 - FLOOR PLAN

SCALE: 1/32" = 1'-0"

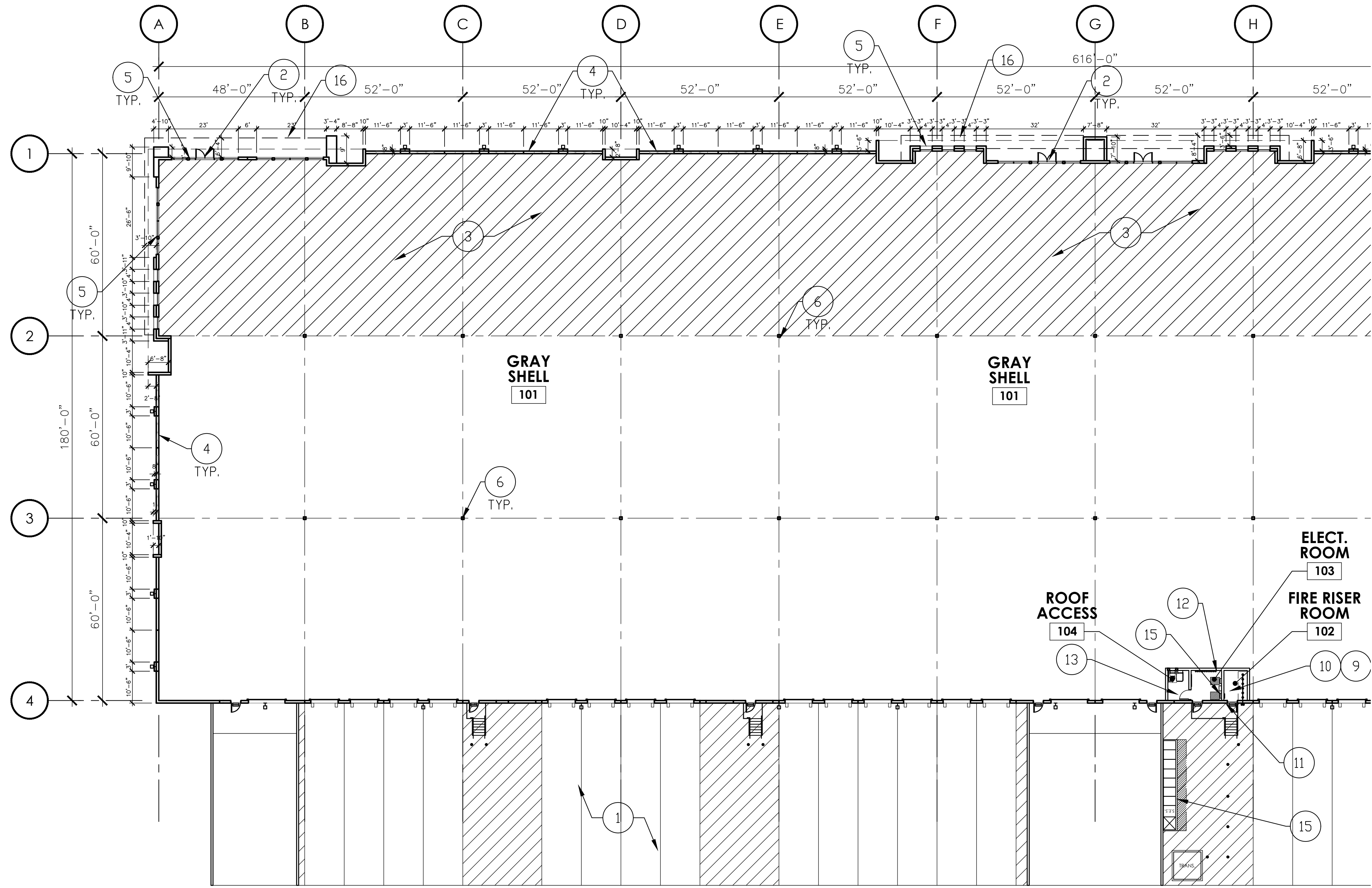
KEYNOTES (PLAN)

NOTE: THE KEYNOTES LISTED BELOW ARE TYPICAL TO THE BUILDINGS AND MAY NOT BE APPLICABLE AND/OR REFERENCED ON ALL SHEETS.

1. CONCRETE SLAB OVER ABC ON GRADE - SLOPE AWAY FROM BUILDING - SEE SITE PLAN FOR FINISH & CIVIL FOR GRADES - 2% MAX.
2. DOUBLE ENTRY DOORS W/ANODIZED ALUMINUM STOREFRONT SYSTEM.
3. CONCRETE SLAB OVER VAPOR BARRIER (15 MIL. MIN.) ON ABC - REFER TO STRUCTURAL DRAWINGS, SOILS REPORT & SPECIFICATIONS. (HATCHED AREA)
4. PAINTED CONCRETE TILT-UP PANEL - SEE BUILDING ELEVATIONS FOR MATERIAL SCHEDULE.
5. 1" GLAZING IN ANODIZED ALUMINUM SYSTEM - SEE BUILDING ELEVATIONS FOR MATERIAL SCHEDULE.
6. HSS COLUMN - SEE STRUCTURAL.
7. INDEPENDENT ROOF AND OVERFLOW DRAIN LEADERS - ROOF DRAIN AND OVERFLOW DRAIN LEADER TO DAYLIGHT AT FACE OF WALL.
8. NOT USED
9. FIRE RISER LOCATION - SEE FIRE SPRINKLER DRAWINGS.
10. PROVIDE DBX "AS-BUILT DRAWINGS" CABINET ADJACENT TO FIRE RISER LOCATION.
11. KNOX BOX FOR FIRE DEPARTMENT ACCESS WITH ALUMINUM ANNOIDIZED FINISH, RECESS MOUNTED AT 4'-6" A.F.F.
12. PROVIDE 3/4" 4' x 8' FIRE RETARDANT TREATED PLYWOOD TMB - BOTTOM AT 6" A.F.F.
13. ROOF ACCESS HATCH & LADDER.14. 5/8" GYP. BD. BOTH SIDES OVER 8" METAL STUDS W/ 3 1/2" SOUND BATT FULL HEIGHT - GYPSUM SHEATHING FULL HEIGHT ON TENANT SIDE AND ROOF ACCESS ROOM - PROVIDE GYPSUM BD. CEILING IN FIRE RISER ROOM AND ELECTRICAL ROOM AT 10'-0" AFF.
15. ELECTRICAL SERVICE ENTRY SECTION/PANELS.
16. LINE OF CANOPY/BALCONY/OVERHANG ABOVE.

GENERAL NOTES

- A. ON ALL EXPOSED METALWORK WELDS AND BRANDS TO BE GROUND VERY SMOOTH AND PAINTED.
- B. ALL ROOF MOUNTED MECHANICAL EQUIPMENT SHALL BE FULLY SCREENED BY PARAPET WALLS EQUAL TO OR GREATER THAN, THE HIGHEST POINT ON THE MECHANICAL EQUIPMENT.



BUILDING 3 - PARTIAL FLOOR PLAN

SCALE: 1" = 20'-0"

KEYNOTES (PLAN)

NOTE: THE KEYNOTES LISTED BELOW ARE TYPICAL TO THE BUILDINGS AND MAY NOT BE APPLICABLE AND/OR REFERENCED ON ALL SHEETS.

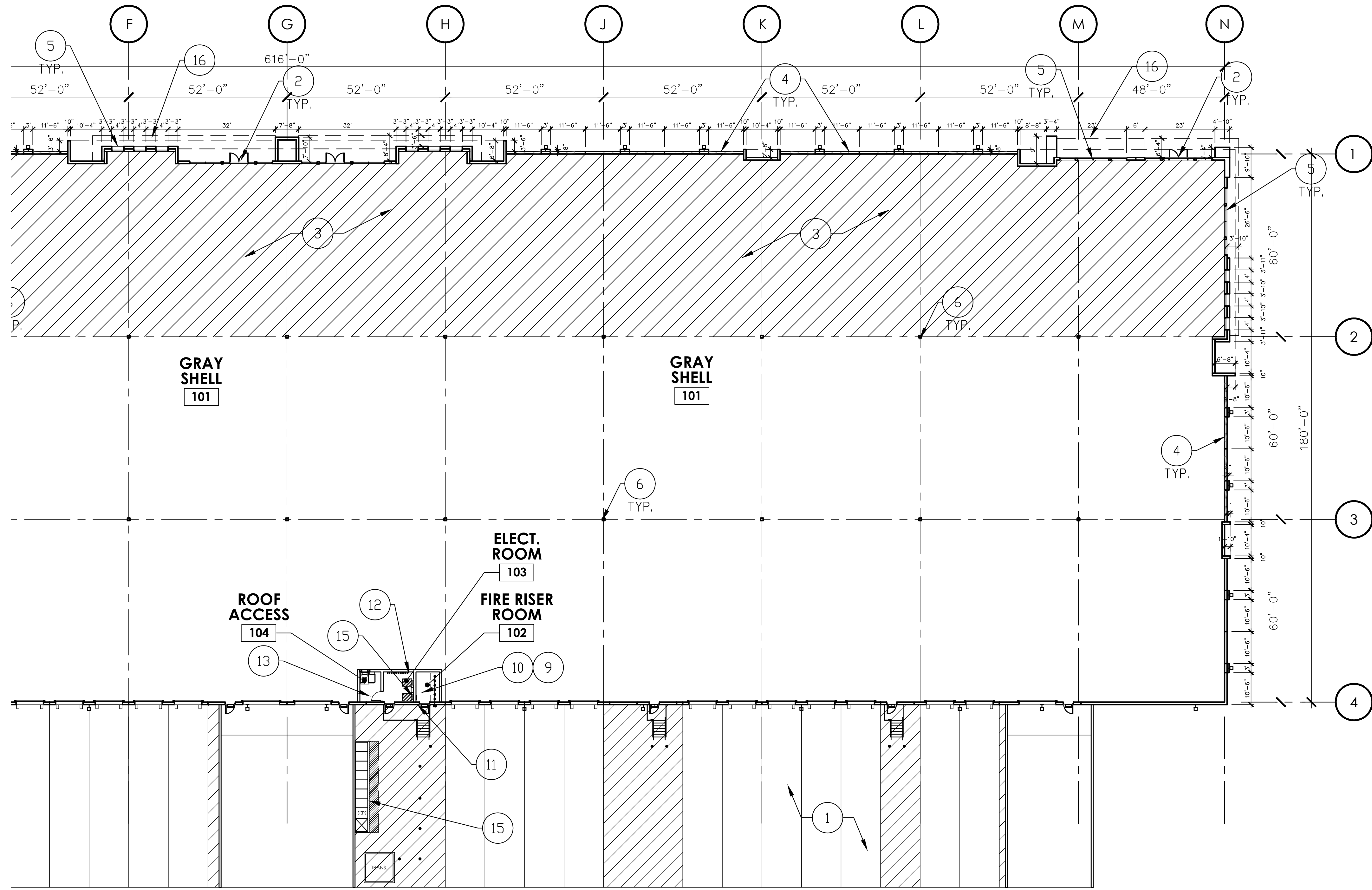
1. CONCRETE SLAB OVER ABC ON GRADE - SLOPE AWAY FROM BUILDING - SEE SITE PLAN FOR FINISH & CIVIL FOR GRADES - 2% MAX.
2. DOUBLE ENTRY DOORS W/ANODIZED ALUMINUM STOREFRONT SYSTEM.
3. CONCRETE SLAB OVER VAPOR BARRIER (15 MIL. MIN.) ON ABC - REFER TO STRUCTURAL DRAWINGS, SOILS REPORT & SPECIFICATIONS. (HATCHED AREA)
4. PAINTED CONCRETE TILT-UP PANEL - SEE BUILDING ELEVATIONS FOR MATERIAL SCHEDULE.
5. 1" GLAZING IN ANODIZED ALUMINUM SYSTEM - SEE BUILDING ELEVATIONS FOR MATERIAL SCHEDULE.
6. HSS COLUMN - SEE STRUCTURAL.
7. INDEPENDENT ROOF AND OVERFLOW DRAIN LEADERS - ROOF DRAIN AND OVERFLOW DRAIN LEADER TO DAYLIGHT AT FACE OF WALL.
8. NOT USED
9. FIRE RISER LOCATION - SEE FIRE SPRINKLER DRAWINGS.
10. PROVIDE DBX "AS-BUILT DRAWINGS" CABINET ADJACENT TO FIRE RISER LOCATION.
11. KNOX BOX FOR FIRE DEPARTMENT ACCESS WITH ALUMINUM ANNOIDIZED FINISH, RECESS MOUNTED AT 4'-6" A.F.F.

12. PROVIDE 3/4" 4' x 8' FIRE RETARDANT TREATED PLYWOOD TMB - BOTTOM AT 6" A.F.F.
13. ROOF ACCESS HATCH & LADDER.14. 5/8" GYP. BD. BOTH SIDES OVER 8" METAL STUDS W/ 3 1/2" SOUND BATT FULL HEIGHT - GYPSUM SHEATHING FULL HEIGHT ON TENANT SIDE AND ROOF ACCESS ROOM - PROVIDE GYPSUM BD. CEILING IN FIRE RISER ROOM AND ELECTRICAL ROOM AT 10'-0" AFF.
15. ELECTRICAL SERVICE ENTRY SECTION/PANELS.
16. LINE OF CANOPY/BALCONY/OVERHANG ABOVE.

GENERAL NOTES

- A. ON ALL EXPOSED METALWORK WELDS AND BRANDS TO BE GROUND VERY SMOOTH AND PAINTED.
- B. ALL ROOF MOUNTED MECHANICAL EQUIPMENT SHALL BE FULLY SCREENED BY PARAPET WALLS EQUAL TO OR GREATER THAN, THE HIGHEST POINT ON THE MECHANICAL EQUIPMENT.





BUILDING 3 - PARTIAL FLOOR PLAN

SCALE: 1" = 20'-0"

KEYNOTES (PLAN)

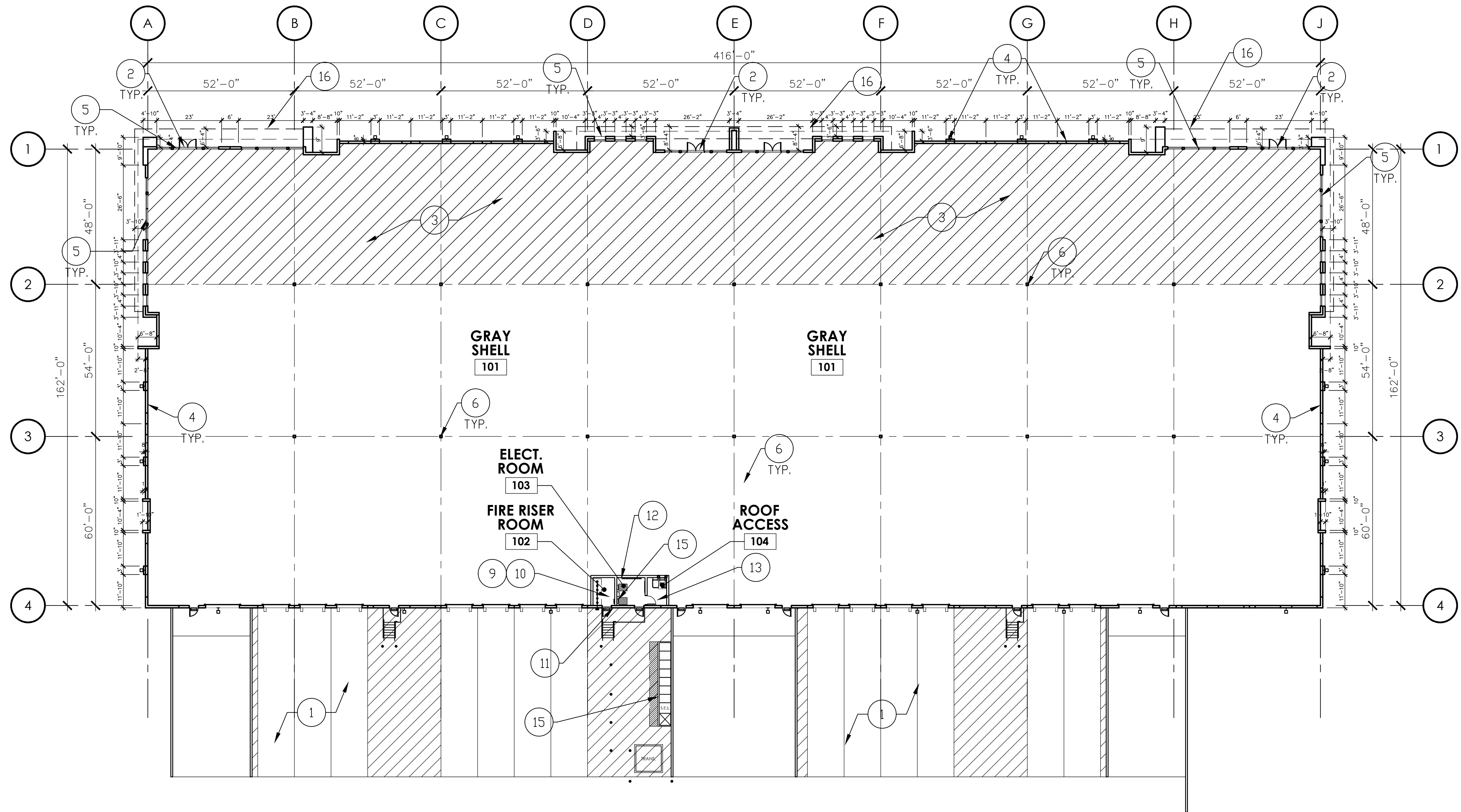
NOTE: THE KEYNOTES LISTED BELOW ARE TYPICAL TO THE BUILDINGS AND MAY NOT BE APPLICABLE AND/OR REFERENCED ON ALL SHEETS.

1. CONCRETE SLAB OVER ABC ON GRADE - SLOPE AWAY FROM BUILDING - SEE SITE PLAN FOR FINISH & CIVIL FOR GRADES - 2% MAX.
2. DOUBLE ENTRY DOORS W/ANODIZED ALUMINUM STOREFRONT SYSTEM.
3. CONCRETE SLAB OVER VAPOR BARRIER (15 MIL. MIN.) ON ABC - REFER TO STRUCTURAL DRAWINGS, SOILS REPORT & SPECIFICATIONS. (HATCHED AREA)
4. PAINTED CONCRETE TILT-UP PANEL - SEE BUILDING ELEVATIONS FOR MATERIAL SCHEDULE.
5. 1" GLAZING IN ANODIZED ALUMINUM SYSTEM - SEE BUILDING ELEVATIONS FOR MATERIAL SCHEDULE.
6. HSS COLUMN - SEE STRUCTURAL.
7. INDEPENDENT ROOF AND OVERFLOW DRAIN LEADERS - ROOF DRAIN AND OVERFLOW DRAIN LEADER TO DAYLIGHT AT FACE OF WALL.
8. NOT USED
9. FIRE RISER LOCATION - SEE FIRE SPRINKLER DRAWINGS.
10. PROVIDE DBX "AS-BUILT DRAWINGS" CABINET ADJACENT TO FIRE RISER LOCATION.
11. KNOX BOX FOR FIRE DEPARTMENT ACCESS WITH ALUMINUM ANNOIDIZED FINISH, RECESS MOUNTED AT 4'-6" A.F.F.

12. PROVIDE 3/4" 4' x 8' FIRE RETARDANT TREATED PLYWOOD TMB - BOTTOM AT 6" A.F.F.
13. ROOF ACCESS HATCH & LADDER.14. 5/8" GYP. BD. BOTH SIDES OVER 8" METAL STUDS W/ 3 1/2" SOUND BATT FULL HEIGHT - GYPSUM SHEATHING FULL HEIGHT ON TENANT SIDE AND ROOF ACCESS ROOM - PROVIDE GYPSUM BD. CEILING IN FIRE RISER ROOM AND ELECTRICAL ROOM AT 10'-0" AFF.
15. ELECTRICAL SERVICE ENTRY SECTION/PANELS.
16. LINE OF CANOPY/BALCONY/OVERHANG ABOVE.

GENERAL NOTES

- A. ON ALL EXPOSED METALWORK WELDS AND BRANDS TO BE GROUND VERY SMOOTH AND PAINTED.
- B. ALL ROOF MOUNTED MECHANICAL EQUIPMENT SHALL BE FULLY SCREENED BY PARAPET WALLS EQUAL TO OR GREATER THAN, THE HIGHEST POINT ON THE MECHANICAL EQUIPMENT.



BUILDING 4 - FLOOR PLAN

SCALE: 1" = 20'-0"

KEYNOTES (PLAN)

NOTE: THE KEYNOTES LISTED BELOW ARE TYPICAL TO THE BUILDINGS AND MAY NOT BE APPLICABLE AND/OR REFERENCED ON ALL SHEETS.

1. CONCRETE SLAB OVER ABC ON GRADE - SLOPE AWAY FROM BUILDING - SEE SITE PLAN FOR FINISH & CIVIL FOR GRADES - 2% MAX.
2. DOUBLE ENTRY DOORS W/ANODIZED ALUMINUM STOREFRONT SYSTEM.
3. CONCRETE SLAB OVER VAPOR BARRIER (15 MIL. MIN.) ON ABC - REFER TO STRUCTURAL DRAWINGS, SOILS REPORT & SPECIFICATIONS. (HATCHED AREA)
4. PAINTED CONCRETE TILT-UP PANEL - SEE BUILDING ELEVATIONS FOR MATERIAL SCHEDULE.
5. 1" GLAZING IN ANODIZED ALUMINUM SYSTEM - SEE BUILDING ELEVATIONS FOR MATERIAL SCHEDULE.
6. HSS COLUMN - SEE STRUCTURAL.
7. INDEPENDENT ROOF AND OVERFLOW DRAIN LEADERS - ROOF DRAIN AND OVERFLOW DRAIN LEADER TO DAYLIGHT AT FACE OF WALL.
8. NOT USED
9. FIRE RISER LOCATION - SEE FIRE SPRINKLER DRAWINGS.
10. PROVIDE DBX "AS-BUILT DRAWINGS" CABINET ADJACENT TO FIRE RISER LOCATION.
11. KNOX BOX FOR FIRE DEPARTMENT ACCESS WITH ALUMINUM ANNOIDIZED FINISH, RECESS MOUNTED AT 4'-6" A.F.F.

12. PROVIDE 3/4" 4' x 8' FIRE RETARDANT TREATED PLYWOOD TMB - BOTTOM AT 6" A.F.F.
13. ROOF ACCESS HATCH & LADDER.14. 5/8" GYP. BD. BOTH SIDES OVER 8" METAL STUDS W/ 3 1/2" SOUND BATT FULL HEIGHT - GYPSUM SHEATHING FULL HEIGHT ON TENANT SIDE AND ROOF ACCESS ROOM - PROVIDE GYPSUM BD. CEILING IN FIRE RISER ROOM AND ELECTRICAL ROOM AT 10'-0" AFF.
15. ELECTRICAL SERVICE ENTRY SECTION/PANELS.
16. LINE OF CANOPY/BALCONY/OVERHANG ABOVE.

GENERAL NOTES

- A. ON ALL EXPOSED METALWORK WELDS AND BRANDS TO BE GROUND VERY SMOOTH AND PAINTED.
- B. ALL ROOF MOUNTED MECHANICAL EQUIPMENT SHALL BE FULLY SCREENED BY PARAPET WALLS EQUAL TO OR GREATER THAN, THE HIGHEST POINT ON THE MECHANICAL EQUIPMENT.