



DESIGN REVIEW BOARD

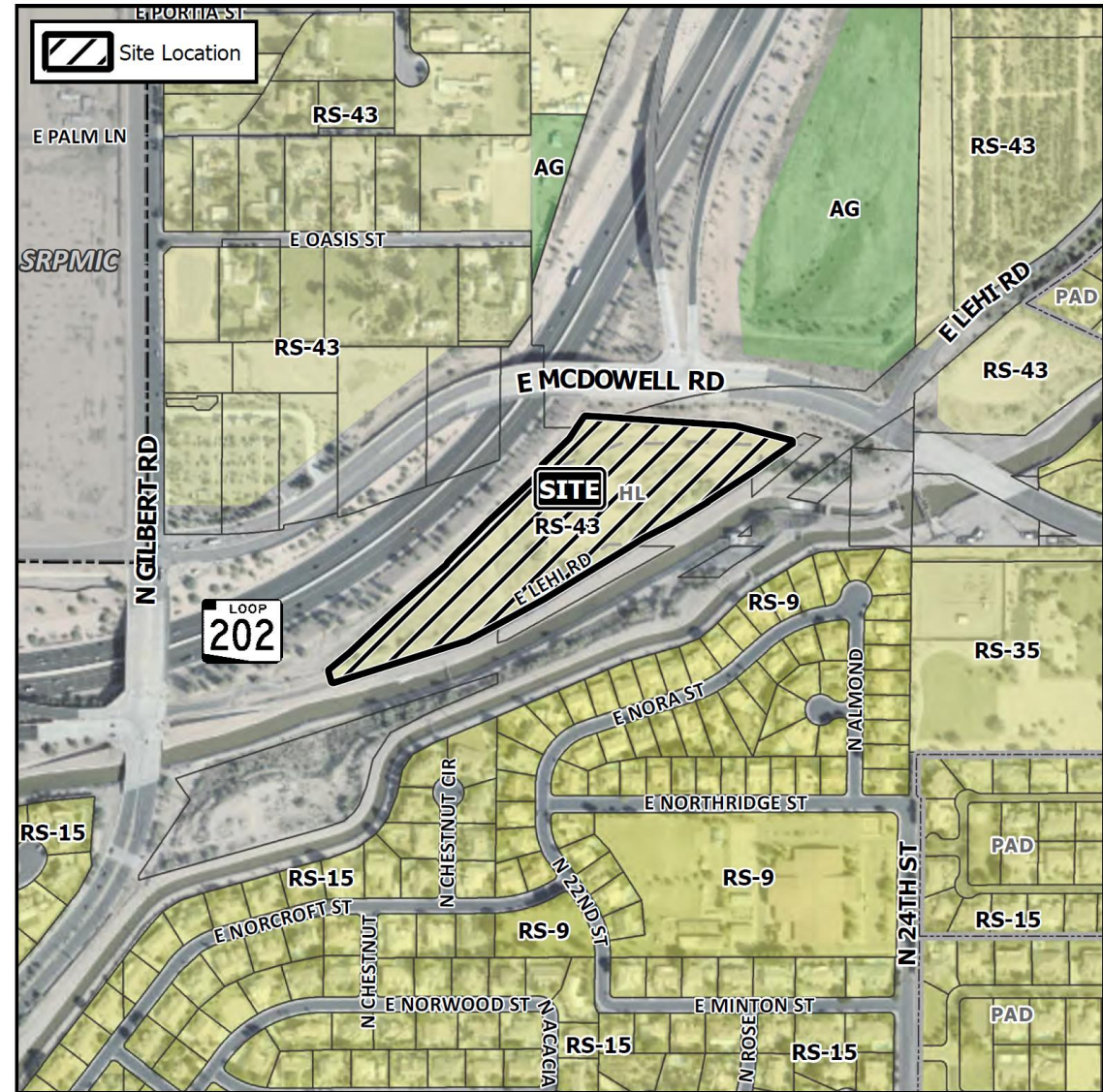
October 12, 2021

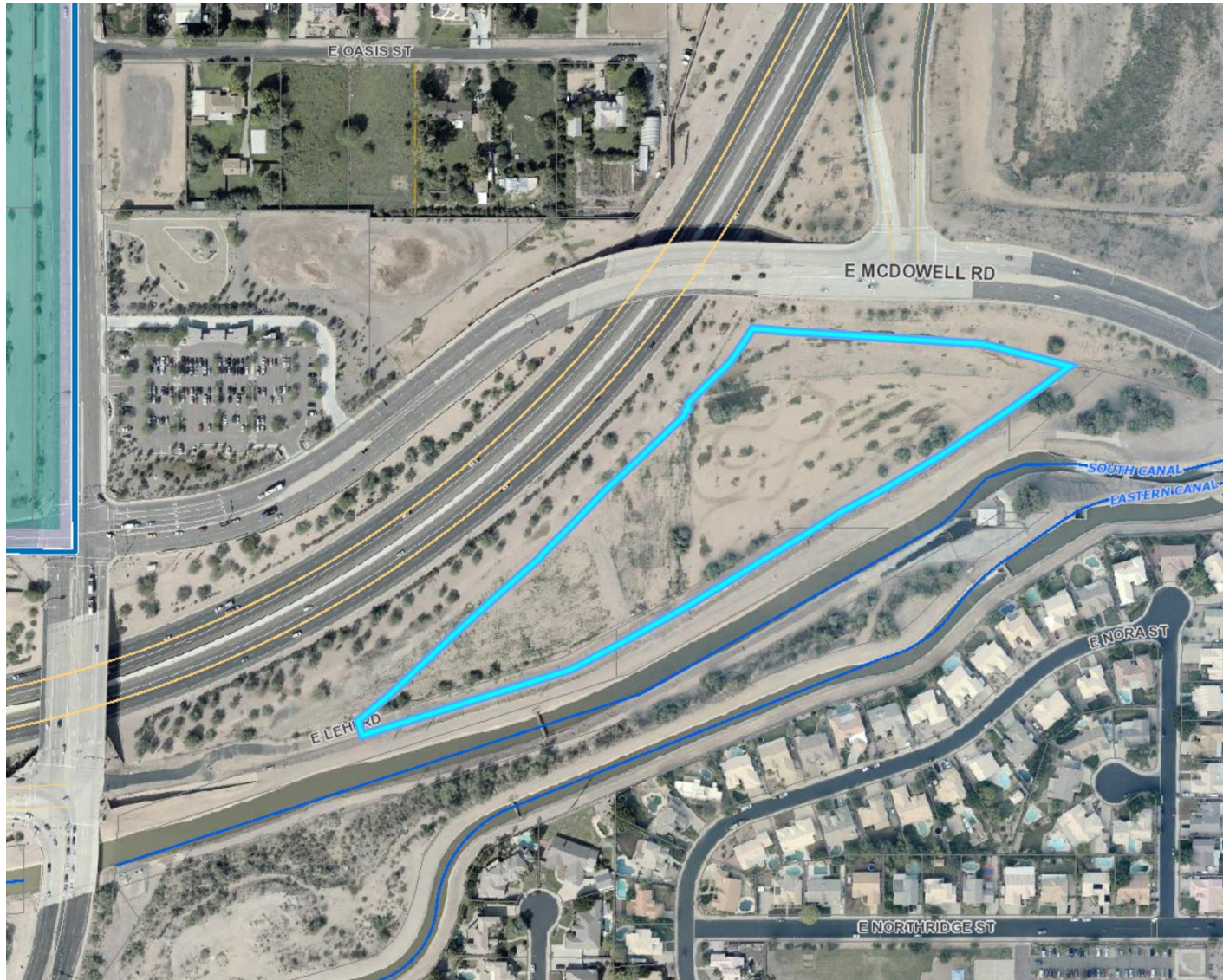


DRB21-00135

Location

- Within the 2200 to 2400 blocks of East McDowell Road (south side)
- East of Gilbert Road





Request

- Design Review

Purpose

- Multiple Residence development

Site Photo



Looking south towards the site from McDowell Road

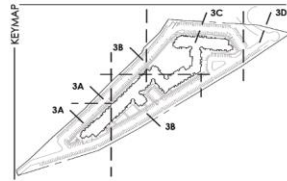
- One multiple residence building
- 222 units
- 1,500 square foot commercial
- Entry off McDowell Road



THE PROPOSED TREES FOR THIS DEVELOPMENT ARE MORE BROADLEAF IN NATURE TO MAINTAIN THE CHARACTER OF THE EXISTING NEIGHBORHOOD BUT REFLECT CURRENT TRENDS OF SPECIES SELECTION. THEY WILL BE READILY AVAILABLE THROUGHOUT THE YEAR. WE WOULD LIKE TO USE REDUPLICATION OF SPECIES TO EVOCATE A WARM AND LIVELY CLIMATE AS PRIMARY TREES. THE ENERGY AND FOCAL AREAS OF THE PROJECT WILL INCLUDE A LOW WATER DESERT TREES TO HELP TRANSITION FROM THE SURROUNDING STREET FRONTAGE TO THE NEIGHBORHOOD CHARACTER. FOR ACCENT TREES, WE ARE PROPOSING MULGA, ACACIA, MEXICAN BIRD OF PARADISE AND TEXAS MOUNTAIN LAUREL. THE SHRUBS, ACCENTS AND GROUNDCOVERS ARE LOW WATER TREES AND PROVIDE A MORE LUSH CHARACTER TO MATCH THE EXISTING NEIGHBORHOOD.

ACCESSORS' PARCEL NUMBERS:	141-03-022, 141-03-028, 141-03-038, 141-03-041, 141-03-042, 141-04-008H, 141-06-252, 141-06-253, 141-06-008F
ZONING:	RM-5
TOTAL UNITS:	222 DU
COMMON OPEN SPACE:	RM-5
MINIMUM:	120 SF x 252 DU = 31,440 SF
PROVIDED:	
PRIVATE OPEN SPACE	100 SF x 41 UNITS = +/- 4,100 SF
PUBLIC OPEN SPACE	+/- 30,100 SF
TOTAL:	+/- 34,200 SF
	9.2% OF NET SITE AREA

LOCATION	PRIMER - SOUTH (South Canal)	REG. TREES	STD. REQ. SIZE	TOTAL TREES PROVIDED	REQ. TREES	TOTAL TREES REQ. & PROVIDED
PRIMER - SOUTH (South Canal)	4 TREES & 3 SHRUBS PER 100' (7)	68	(17) 3" DB (24) 2" DB	(3) 2" DB (24) 2" DB	340	340
PRIMER - NORTH (North Canal)	4 TREES & 3 SHRUBS PER 100' (7)	28	(7) 3" DB (14) 2" DB	(17) 3" DB (3) 2" DB	148	148
PRIMER - NORTH (North Canal)	4 TREES & 3 SHRUBS PER 100' (7)	46	(12) 3" DB (24) 2" DB	(15) 3" DB (1) 16" DB	280	280
PRIMER - NORTH (North Canal)	4 TREES & 3 SHRUBS PER 100' (7)	10	(12) 3" DB (24) 2" DB	(20) 3" DB (1) 16" DB	280	280
REQUIRED PARKING PLANNING	3 TREES & 3 SHRUBS PER 8 SPACES	108	108 3" DB 208 2" DB	(6) 3" DB 52 2" DB		
REQUIRED BASE PLANNING	3 TREES PER 50' OF PARKING WITHIN 30' CAN COUNT TOWARDS THIS REQUIREMENT	108	108 3" DB 208 2" DB	(6) 3" DB 52 2" DB		



SYMBOL TREES (LARGE)	BOTANICAL NAME <small>— SEE MAXIMUM SPACING</small>	COMMON NAME	SIZE	CALIPER	QTY SIZE	MATURE HEIGHT (FT. x IN.)
	EBENOPSIS EBANO (50"x40")	TEXAS EBONY	36" BOX	2.25"	6	9' x 6'
	FRAXINUS VELUTINA 'FAN WEST' (30"x30")	FAN WEST ASH	24" BOX	1-1/2"	18	9' x 6'
	PARKINSONIA THORNLESS AZT' (25"x25")	AZT THORNLESS PALO VERDE	24" BOX 36" BOX	1-1/2" 2-1/4"	20 11	8' x 4" 10' x 7"
	PROSOPIS HYBRID 'LESLIE ROY' (25"x25")	LESLIE ROY MESQUITE	36" BOX	2-1/2"	15	10' x 8"
	PISTACIA CHINENSIS (30"x30")	CHINESE PISTACHE	24" BOX	1-1/2"	17	9' x 3"
	PISTACIA LENTISCUS (25"x30")	MASTIC TREE	36" BOX	2-1/4"	-	11' x 5"
	QUERCUS VIRGINIANA 'CATHEDRAL' (40"x30")	CATHEDRAL LIVE OAK	15 GAL 24" BOX	.75" 1-1/2"	37 32	7' x 2.5" 3' x 4"
	ULMUS PARVIFOLIA (40"x30")	EVERGREEN ELM	36" BOX 15 GAL	2-1/2" 1.5"	27 2	12' x 7" 2' x 3"
	* NOTE: FINAL PLANS TO INDICATE INDIVIDUAL SIZES TO MEET CITY REQUIRED SIZES	24" BOX	1-1/2"	27	9' x 4"	
		36" BOX	2-1/2"	21	12' x 8"	
TREES (MEDIUM)						
	ACACIA ANEURA (18"x15")	MULGA	24" BOX	1-1/4"	17	7' x 3"
	CAESALPINIA MEXICANA (15"x15")	MEXICAN BIRD OF PARADISE	24" BOX	2"	18	7' x 4"
	CHITALPA TASHKENTENSIS (30"x30")	CHITALPA	24" BOX	1-1/2" (MULTI)	10	7' x 4"
	SOPHORA SECUNDIFLORA (30"x30")	TEXAS MOUNTAIN LAUREL	* 36" BOX	2" (MULTI)	3	6' x 4"
	PHOENIX DACTYLIFERA	DATE PALM (DIAMOND CUT)	24 TF	40+*	14	20' x 6"
	PHOENIX ROBELLINI	PYGMY DATE PALM	7 GAL	12+*	46	4' x 3"

SHUBS		Mature Size	
	BOUGAINVILLEA TORCH GLOW	BOUGAINVILLEA	5 GAL 5th x 5w
	CASABIANA FLORIFERRA	RED BIRD OF PARADISE	5 GAL 8th x 10W
	CORDON ROSE	LITTLE LEAF CORDON	5 GAL 8th x 8W
	EREMOPHILA GLABRA SP.	WINTER BLAZE	5 GAL 4th x 4W
	CARNOSA		
	EREMOPHILA HYDROPHORA	BLUEBELLS	5 GAL 3th x 3w
	EREMOPHILA x SUMMITMER BLUE	SUMMITMER BLUE	5 GAL 6th x 10W
	EUPHORBIA TIRICALLI	FIRE STICKS	5 GAL 4th x 4W
	GOSSEYPUJ HARKNESS	SAN MARCOS HIBISCUS	5 GAL 3th x 5W
	JUSTICIA	MEXICAN HONEYBUCKLE	5 GAL 3th x 3W
	LEUCOPHYLLON LYNN'S LEGUE	LEWIS TEXAS SAGE	5 GAL 5th x 5W
	OLEA EUROPAEA LITTLE OLIE	DWARF OLEA	5 GAL 3th x 3W
	RUELLIA PENINSULARIS	BAJA RUELLIA	4th x 6W
	RUELLIA EQUESTRIFORMIS	CORAL FOUNTAIN	5 GAL 3th x 4W
	TECOMA x SPARKY	SPARKY TECOMA	5 GAL 4th x 5W
ACCENTS			
	AGAVE 'BLUE GLOW'	BLUE GLOW AGAVE	5 GAL 2th x 3w
	AGAVE DESMETIANA	SMOOTH AGAVE	5 GAL 3th x 3W
	ALOE BARBADENSIS	MEDICINAL ALOE	5 GAL 2th x 3w
	ALOE x BLUE ELF	BLUE ELF ALOE	5 GAL 2th x 2w
	HESPERALOE PARVIFLORA	RED YUCCA	5 GAL 3th x 4W
	PERILANNA MACROCARPUS	LADY'S SLIPPER	5 GAL 3th x 3W
	SAEVEVERA TRIFOLIATA	MOTHER-IN-LAW TONGUE	5 GAL 1th x 4W
	YUCCA RUPICOLA	TWISTED LEAF YUCCA	5 GAL 2th x 3W
GROUNDCOVERS			
	EREMOPHILA 'GLABREA'	OUTBACK SUNRISE EMU	1 GAL 7th x 7" W
	LANTANA 'NEW GOLD'	NEW GOLD LANTANA	5 GAL 1th x 4W
	LANTANA MONTEVIDEOENSIS	PURPLE LANTANA	5 GAL 1th x 3W
	SETCREASAE FALLIDA	PURPLE HEART	5 GAL 2th x 2W
	SPHAGNETICOLA TRILOBATA	YELLOW DOT	5 GAL 1th x 6W
GROUNDCOVERS			
	BIGNONIA CAPECRETA	CROSSVINE	5 GAL 8th x 8W
	BOUGAINVILLEA	BOUGAINVILLEA VINE	10th x 10W
	'BARBARA KARS'		
	TRACHELOSPERMUM	STAR JASMINE	5 GAL 8th x 8W
	JASMINOIDES		
DECOMPOSED GRANITE: 2" DEPTH OF 3/4" SCREENED 'APACHE GOLD'			
DECOMPOSED GRANITE: 2" DEPTH OF 3/4" SCREENED DESERT BLEND AT MAIN ENTRY FOR SOIL CONTROL, COLOR TO COMPLEMENT APACHE GOLD			
FIBRIC TURF ARTIFICIAL GRASS			
FETI TROP (DOG PANT)		60oz / 7.125' Pile Height	+/- 600 sq. ft.
KID PLAY 60' (POOL COURT & LSP)		60oz / 1.5' Pile Height	+/- 9,300 sq. ft.
COMBLE F 12' COMBLESTONE APACHE GOLD			---
(At Roof Drain Locations: for Slope stabilization per civil plans)			

East Elevations



1 ELEVATION

SCALE: 3/32" = 1'-0"



2 ELEVATION

SCALE: 3/32" = 1'-0"



3 ELEVATION

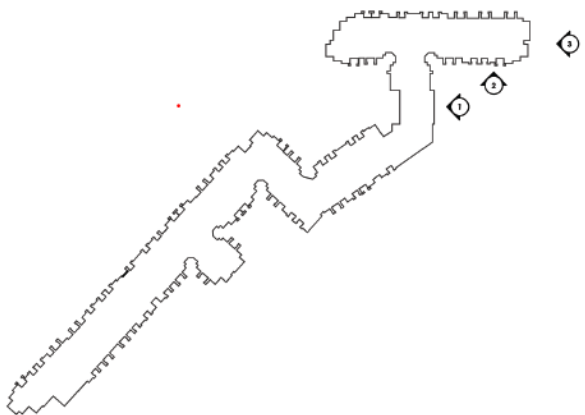
SCALE: 3/32" = 1'-0"

EXTERIOR MATERIALS

A	STUCCO COLOR 1	SHERWIN-WILLIAMS - SW7017 "DORIAN GRAY"
B	STUCCO COLOR 2	SHERWIN-WILLIAMS - SW7551 "GREEK VILLA"
C	BOARD & BATTEN	SHERWIN-WILLIAMS - SW7551 "GREEK VILLA"
D	CULTURED STONE	CORANADO STONE - SAWTOOTH LEDGE "MOUNT VERNON"
E	ROOF SHINGLES	GAF TIMBERLINE "CHARCOAL"
F	METAL ROOFING	STANDING SEAM - "DARK BRONZE"
G	WINDOW FRAME	ARCADIA "DARK BRONZE"
H	METAL PANELS	CORTEN

EXTERIOR MATERIAL DISTRIBUTION:

	C	BOARD & BATTEN:	±45 %
A	B	STUCCO:	±30 %
	D	CULTURED STONE:	±25 %



KEYMAP



North and West Elevations



4 ELEVATION

SCALE: 3/32" = 1'-0"



5 ELEVATION

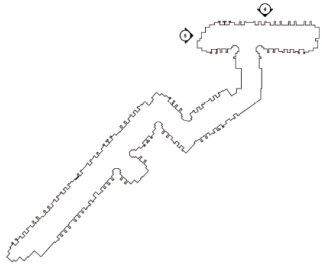
SCALE: 3/32" = 1'-0"

EXTERIOR MATERIALS

A	STUCCO COLOR 1	SHERWIN-WILLIAMS - SW7017 "DORIAN GRAY"
B	STUCCO COLOR 2	SHERWIN-WILLIAMS - SW7551 "GREEK VILLA"
C	BOARD & BATTEN	SHERWIN-WILLIAMS - SW7551 "GREEK VILLA"
D	CULTURED STONE	CORANADO STONE - SAWTOOTH LEDGE "MOUNT VERNON"
E	ROOF SHINGLES	GAF TIMBERLINE "CHARCOAL"
F	METAL ROOFING	STANDING SEAM - "DARK BRONZE"
G	WINDOW FRAME	ARCADIA "DARK BRONZE"
H	METAL PANELS	CORTEN

EXTERIOR MATERIAL DISTRIBUTION:

C	BOARD & BATTEN:	±45 %
A	STUCCO:	±30 %
D	CULTURED STONE:	±25 %



KEYMAP

West Elevations



6 ELEVATION

SCALE: 3/32" = 1'-0"



8 SOUTH ELEVATION

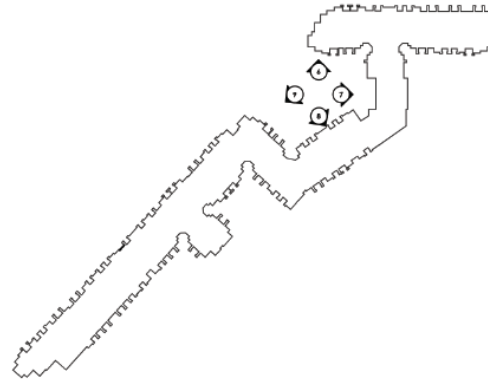
SCALE: 3/32" = 1'-0"

EXTERIOR MATERIALS

A	STUCCO COLOR 1	SHERWIN-WILLIAMS - SW7017 "DORIAN GRAY"
B	STUCCO COLOR 2	SHERWIN-WILLIAMS - SW7551 "GREEK VILLA"
C	BOARD & BATTEN	SHERWIN-WILLIAMS - SW7551 "GREEK VILLA"
D	CULTURED STONE	CORANADO STONE - SAWTOOTH LEDGE "MOUNT VERNON"
E	ROOF SHINGLES	GAF TIMBERLINE "CHARCOAL"
F	METAL ROOFING	STANDING SEAM - "DARK BRONZE"
G	WINDOW FRAME	ARCADIA "DARK BRONZE"
H	METAL PANELS	CORTEN

EXTERIOR MATERIAL DISTRIBUTION:

C	BOARD & BATTEN:	±45 %
A B	STUCCO:	±30 %
D	CULTURED STONE:	±25 %



KEYMAP

10



7 ELEVATION

SCALE: 3/32" = 1'-0"



9 ELEVATION

SCALE: 3/32" = 1'-0"

West Elevations

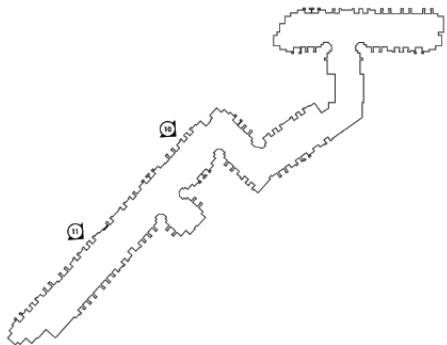


EXTERIOR MATERIALS

A	STUCCO COLOR 1	SHERWIN-WILLIAMS - SW7017 "DORIAN GRAY"
B	STUCCO COLOR 2	SHERWIN-WILLIAMS - SW7551 "GREEK VILLA"
C	BOARD & BATTEN	SHERWIN-WILLIAMS - SW7551 "GREEK VILLA"
D	CULTURED STONE	CORANADO STONE - SAWTOOTH LEDGE "MOUNT VERNON"
E	ROOF SHINGLES	GAF TIMBERLINE "CHARCOAL"
F	METAL ROOFING	STANDING SEAM - "DARK BRONZE"
G	WINDOW FRAME	ARCADIA "DARK BRONZE"
H	METAL PANELS	CORTEN

EXTERIOR MATERIAL DISTRIBUTION:

	C	BOARD & BATTEN:	±45 %
A	B	STUCCO:	±30 %
	D	CULTURED STONE:	±25 %



KEYMAP

11 ELEVATION

SCALE: 3/32" = 1'-0"

South Elevations



13 SOUTH ELEVATION

SCALE: 3/32" = 1'-0"



12 ELEVATION

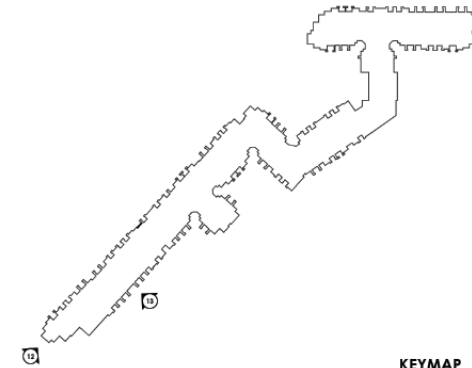
SCALE: 3/32" = 1'-0"

EXTERIOR MATERIALS

A	STUCCO COLOR 1	SHERWIN-WILLIAMS - SW7017 "DORIAN GRAY"
B	STUCCO COLOR 2	SHERWIN-WILLIAMS - SW7551 "GREEK VILLA"
C	BOARD & BATTEN	SHERWIN-WILLIAMS - SW7551 "GREEK VILLA"
D	CULTURED STONE	CORANADO STONE - SAWTOOTH LEDGE "MOUNT VERNON"
E	ROOF SHINGLES	GAF TIMBERLINE "CHARCOAL"
F	METAL ROOFING	STANDING SEAM - "DARK BRONZE"
G	WINDOW FRAME	ARCADIA "DARK BRONZE"
H	METAL PANELS	CORTEN

EXTERIOR MATERIAL DISTRIBUTION:

	C	BOARD & BATTEN:	±45 %
A	B	STUCCO:	±30 %
	D	CULTURED STONE:	±25 %



KEYMAP

South Elevations



14 SOUTH ELEVATION

SCALE: 3/32" = 1'-0"



15 SOUTH ELEVATION

SCALE: 3/32" = 1'-0"



16 SOUTH ELEVATION

SCALE: 3/32" = 1'-0"



17 ELEVATION

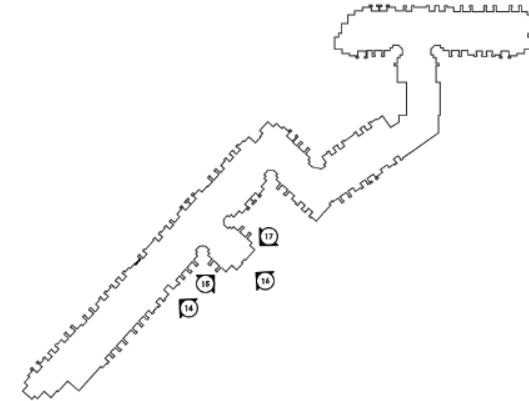
SCALE: 3/32" = 1'-0"

EXTERIOR MATERIALS

A	STUCCO COLOR 1	SHERWIN-WILLIAMS - SW7017 "DORIAN GRAY"
B	STUCCO COLOR 2	SHERWIN-WILLIAMS - SW7551 "GREEK VILLA"
C	BOARD & BATTEN	SHERWIN-WILLIAMS - SW7551 "GREEK VILLA"
D	CULTURED STONE	CORANADO STONE - SAWTOOTH LEDGE "MOUNT VERNON"
E	ROOF SHINGLES	GAF TIMBERLINE "CHARCOAL"
F	METAL ROOFING	STANDING SEAM - "DARK BRONZE"
G	WINDOW FRAME	ARCADIA "DARK BRONZE"
H	METAL PANELS	CORTEN

EXTERIOR MATERIAL DISTRIBUTION:

	C	BOARD & BATTEN:	±45 %
A	B	STUCCO:	±30 %
	D	CULTURED STONE:	±25 %



KEYMAP

South Elevations



18 ELEVATION

SCALE: 3/32" = 1'-0"



19 ELEVATION

SCALE: 3/32" = 1'-0"



20 ELEVATION

SCALE: 3/32" = 1'-0"

EXTERIOR MATERIALS

A	STUCCO COLOR 1	SHERWIN-WILLIAMS - SW7017 "DORIAN GRAY"
B	STUCCO COLOR 2	SHERWIN-WILLIAMS - SW7551 "GREEK VILLA"
C	BOARD & BATTEN	SHERWIN-WILLIAMS - SW7551 "GREEK VILLA"
D	CULTURED STONE	CORANADO STONE - SAWTOOTH LEDGE "MOUNT VERNON"
E	ROOF SHINGLES	GAF TIMBERLINE "CHARCOAL"
F	METAL ROOFING	STANDING SEAM - "DARK BRONZE"
G	WINDOW FRAME	ARCADIA "DARK BRONZE"
H	METAL PANELS	CORTEN

EXTERIOR MATERIAL DISTRIBUTION:

	C	BOARD & BATTEN:	±45 %
A	B	STUCCO:	±30 %
	D	CULTURED STONE:	±25 %



KEYMAP

Renderings



Renderings



Material Board

EXTERIOR COLOR SCHEDULE



STUCCO 1
MFGR: SHERWIN-WILLIAMS
SW7017 "DORIAN GRAY"



STUCCO 2
MFGR: SHERWIN-WILLIAMS
SW7551 "GREEK VILLA"



BOARD & BATTEN
MFGR: SHERWIN-WILLIAMS
SW7551 "GREEK VILLA"



CULTURED STONE
MFGR: CORONADO STONE
SAWTOOTH LEDGE "MOUNT VERNON"



ROOF SHINGLES
MFGR: GAF
TIMBERLINE "CHARCOAL"



METAL ROOFING
MFGR: TBD
STANDING SEAM "DARK BRONZE"



WINDOW FRAMES
MFGR: TBD
"DARK BRONZE"



METAL PANELS
MFGR: TBD
"CORTEN"



TODD & ASSOCIATES, INC.

ARCHITECTURE PLANNING LANDSCAPE ARCHITECTURE
602.952.8280p www.toddassoc.com

Materials Board

The Homestead at Lehi Crossing
• Mesa, Arizona
Project Number: 20-2036-01 • 08-09-21
PLANNING & ZONING SUBMITTAL



Lighting

TYPE: P3, P3HS, P4, P5

Project	Catalog #	Type
Prepared by	Notes	Date



Lumark PRV / PRV-XL Preval LED

Area / Site Luminaire

Typical Applications

Outdoor • Parking Lots • Walkways • Roadways • Building Areas

Interactive Menu

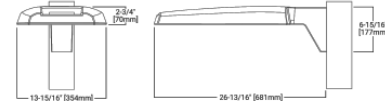
- Ordering Information page 2
- Mounting Details page 3
- Optical Configurations page 3
- Product Specifications page 3
- Energy and Performance Data page 4
- Control Options page 5

Quick Facts

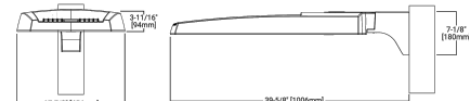
- Lumen packages range from 7,100 - 48,600 lumens (50W - 350W)
- Replaces 70W up to 1,000W HID equivalents
- Efficacies up to 148 lumens per watt
- Energy and maintenance savings up to 85% versus HID solutions
- Standard universal quick mount arm with universal drill pattern

Dimensional Details

Preval



Preval XL



PS000001EN page 1
March 4, 2020 2:10 PM

Lumark

PRV / PRV-XL Preval

Ordering Information

SAMPLE NUMBER: PRV-XL-C75-D-UNV-T4-SA-BZ

TYPE: P3, P3HS, P4, P5

Product Family ¹	Light Engine ¹	Driver	Voltage	Distribution	Mounting (Included)	Color
PRV-Preval	C16-11 LED 7,100 Nominal Lumens C25-2 LED 13,100 Nominal Lumens C40-2 LED 17,100 Nominal Lumens C40-2 LED 20,000 Nominal Lumens	D-Dimming (0-10V)	UNV-Universal (120-277V) 347-347V 480-480V	T2-Type II T2-Type III T4-Type IV T5-Type V	SA-Standard Versatile Arm MA-Mast Arm WM-Wall Mount Arm	AP-Day B-Bronze BK-Black DP-Dark Platinum GM-Glossy Metallic WH-White
PRV-XL-Preval XL	C75-14 LED 26,100 Nominal Lumens C100-14 LED 31,000 Nominal Lumens C125-14 LED 36,000 Nominal Lumens C150-16 LED 41,100 Nominal Lumens C175-16 LED 46,600 Nominal Lumens					
Options (Add as Suffix)						
Accessories (Order Separately) ²						
NOTES: 1. Designates Cooper's "Qualified" products. Refer to www.designlights.org Qualified Products list under Family Models for details. 2. Customer is responsible for engineering analysis to confirm pole and fixture compatibility for applications. Refer to installation instructions and pole wire part MP1000100 for additional support information. 3. Standard 6000K CCT and 7000K. 4. Only for use with 480V three systems. For NEC, not for use with ungrounded systems, impedance grounded systems (commonly known as Three Phase Three Wire Delta, Three Phase High Leg Delta and Three Phase Corner Grounded Delta systems). 5. Use indicated CCT for use in product website for use standard CCTs. 6. Option will come factory-installed. House Side should not be used with T5 distribution or C40 luminaire package. 7. Not available with C40 luminaire package. 8. Only available in PRV configurations C15, C25, C40 or C48. 9. Controls system is not available with photocontrol receptacle (PRV or PRV-XL) or other controls options (MS, MPT, ZW or LMS). 10. Utilizes the Wattstopper sensor FSP-011. 11. Sensor operates without P3HS but is only available when operating below 30°C (86°F). 12. In order for the device to be field configurable, require MAC Gateway components MAC-PH and MP1000100 in appropriate quantities. Only compatible with Wireless system and software and requires system components to be installed for operation. See website for more Wireless application information. 13. Replace KX with sensor color (MS, RZ, or BK). 14. Luminaire Pro wireless sensors are factory-installed and require wireless components (LMP-L, LMP-DL-L, and LMP-DL-L) in appropriate quantities. See website for Luminaire Pro application information. 15. Not available with 347V, 480V, or 48V options. Consult Luminaire system product pages for additional details and compatibility information. 16. Not available with 48V option. 17. Not available with 347V, 480V, or 48V options. Consult Luminaire system product pages for additional details and compatibility information. 18. Not available with 48V option. 19. Not available with 347V, 480V, or 48V options. Consult Luminaire system product pages for additional details and compatibility information. 20. Not available with 347V, 480V, or 48V options. Consult Luminaire system product pages for additional details and compatibility information. 21. Not available with 347V, 480V, or 48V options. Consult Luminaire system product pages for additional details and compatibility information. 22. Requires 7-PIN NEMA network photocontrol receptacle (PRV) option. The M500-7 cannot be used in conjunction with other controls systems (MS, MPT, ZW or LMS).						

Lumark Integrated Network Security Camera Technology Options (Add as Suffix)

Product Family	Camera Type	Data Bandwidth
L-Luminaire Technology	D-Dome Camera	E-Ethernet Networking

Stock Ordering Information

Product Family ¹	Light Engine ¹	Voltage	Distribution	Options (Add as Suffix)
PRV-Preval	C16-11 LED 7,100 Nominal Lumens C25-2 LED 13,100 Nominal Lumens C40-2 LED 17,100 Nominal Lumens C40-2 LED 20,000 Nominal Lumens	UNV-Universal (120-277V) 347-347V	T2-Type II T4-Type IV	MSP1000100-Integrated Sensor for Dimming Operation, Maximum 30' Mounting Height ²
PRV-XL-Preval XL	C75-14 LED 26,100 Nominal Lumens C100-14 LED 31,000 Nominal Lumens C125-14 LED 36,000 Nominal Lumens C150-16 LED 41,100 Nominal Lumens C175-16 LED 46,600 Nominal Lumens			

1. All stock configurations are standard 4800K/7000K, Bronze Finish, and include the standard versatile mounting arm.
2. Only available in PRV configurations C15, C25, C40 or C48.



PS000001EN page 2
March 4, 2020 2:10 PM

Date: _____ Customer: _____
Project: _____
Type: _____ Qty: _____

selux

Saturn Cutoff LED



TYPE: PT3HS, P4, P5

Order Code:

Series	Pole Order Code:	Series	Height	Finish	Options
Optics	R1 Type I R2 Type II R3 Type III R3W Type IV R4 Type V R5R (Round) R5S Type V (Square) R5Q Type V (Rectangular)				
Mounting	1A Single Arm Mount 2 Double W Wall Mount				
Light Engine	5G450 39W/440lm 5G700 62W/544lm 5G105 92W/743lm				
CCT	27° 2700K 30° 3000K 40° 4000K				
Power Cord Length	8' 10' 10' 12' 14' 16' 16' 18' 18' XX' XX' XX'				
Finish	WH White BK Black BL Semi-Matte Black BZ Bronze SV Silver SP Specify Premium Color				
Voltage	UNV 120-277 120 120V 240 240V 277 277V 347 347V 480 480V				
Options	DM ¹ Dimming (0-10V) H15 House Side Switch (300V) HL30A ³ HL-Lo Switching Low Output 30% HL50A ³ HL-Hi Switching High Output 50% D5 No Uplight Finish PCT Protocol Tether				

Pole Motion Sensor²
with optional photocell
see page 3 for order code

Product Modifications

Please list modification requirements for sales by factory:

Approvals

Date: _____

Selux Corporation © 2020, T 845-834-1400, 800-735-8927, F 845-834-1401, www.selux.us
It is a continuing effort to offer the best product possible, we reserve the right to change, without notice, specifications or materials that in our opinion will not alter the function of the product. Specification sheets found on www.selux.us are the most recent versions and supersede all other printed or electronic versions.

Page 1 of 11
(Rev. 09/2020)
SACL_v6.5

Lighting

HUBBELL
 Outdoor Lighting

DATE: _____ LOCATION: _____
 TYPE: _____ PROJECT: _____
 CATALOG #: _____

LNC2

SMALL LED LITEPAK

FEATURES

- 60% more lumens and increased performance than smaller LNC models
- 3000K, 4000K and 5000K as well as Amber
- Type II, III and IV distributions available for a variety of application needs
- Quick-mount adapter allows easy installation/maintenance
- 347V and 480V versions for industrial applications and Canada
- Shock versions available for fast service
- Full cut-off, neighbor friendly, IGA approved
- Optional photocell for additional energy savings

Standard 9, 12, and 18L Version¹ Prismatic Version

Surface Conduit Hubs, Sensor & StatSync Version Battery Backup Version

¹When used with 18L only diffuser

RELATED PRODUCTS

LNC # LNC3 # LNC4

CONTROL TECHNOLOGY

SiteSync[®]

SPECIFICATIONS

CONSTRUCTION

- Rugged die-cast aluminum housing protects components and provides an architectural appearance
- Casting thermally conducts LED heat to optimize performance and long life
- Powder paint finish provides durability in outdoor environments

OPTICS

- Zero uplight distributions using individual acrylic
- LED optics provide IES type II, III and IV distributions. Optional (C3) acrylic diffuser available for reduced glare
- Prismatic reflector lens provides ~10% uplight for increased vertical footcandles and forward light projection ideal for security lighting
- L96 at 60,000hrs (Projected per IESNA TM-21-11), see table on page 3 for all values

INSTALLATION

- Quick-mount adapter provides easy installation to wall or to recessed junction boxes (4" square junction box)
- Designed for direct haw mount
- Optional 1/2" conduit hubs available (standard for sensor, SiteSync and battery versions)

ELECTRICAL

- 120V-277V universal voltage 50/60Hz 0-10V dimming drivers
- 347V and 480V dimmable driver option in 12L-070 configuration
- Minimum operating temperature is -40°C/-40°F (includes 12L-035 and P15 configurations)
- Drivers have greater than 90 power factor and less than 20% Total Harmonic Distortion
- Driver RoHS and IP66
- 10A surge protector
- 3000K CCT nominal, 4000K CCT nominal, 5000K CCT nominal (70 CR)
- 9, 12 and 18 LED configurations available (see pages 2 and 3 for electrical and photometric details)

CONTROLS

- Universal button photocell
- Occupancy sensor options available for complete on/off and dimming control
- StatSync pre-commissioned wireless controls (with or without sensor)
- Integral Battery Backup provides emergency lighting for the required 90 minute path of egress
- Dual Driver and Dual Power Feed option for 18L-070 versions

CERTIFICATIONS

- DLC[®] DesignLights Consortium Qualified, with some Premium Qualified configurations. Please refer to the DLC website for specific product qualifications at www.designlights.org
- Listed to UL 598 and CSA C22.2 225/500-24 for wet locations
- Made-to-order versions are IP-65 rated
- This product qualifies as a "designated country construction material" per FAR 52.225-11 Buy American-Construction Materials under Trade Agreements effective 04/23/2020. See Buy American Solutions

WARRANTY

- 5 year limited warranty
- See HLI Standard Warranty for additional information

KEY DATA	
Lumen Range	2500-400
Wattage Range	29-42
Efficacy Range (LPW)	85-112
Fixture Projected Life (Hours)	196-60K
Weights lbs. (kg)	9.6 (2.4)

Page 1/5 Rev. 10/14/20 LNC2LED-SPEC © 2020 Hubbell Outdoor Lighting, a division of Hubbell Lighting, Inc. Specifications subject to change without notice. 701 Millennium Blvd • Greenville, SC 29607 / Tel 864.676.1000 / Website www.hubbelloutdoor.com

HUBBELL
 Outdoor Lighting

DATE: _____ LOCATION: _____
 TYPE: _____ PROJECT: _____
 CATALOG #: _____

LNC2

SMALL LED LITEPAK

TYPE: W10, W7

Example: LNC2-9L-3K-2-U-DST-PCU

ORDERING GUIDE

CATALOG # _____

ORDERING INFORMATION

Series	LEDs	CCT/CRI	Driver Current	ES Distribution	Voltage	Mounting
LNC2 Small LED LITEPAK	9 LEDs 12 LEDs 18 LEDs	3K 3000K nominal, 70 CR 4K 4000K nominal, 70 CR 5K 5000K nominal, 70 CR AM Amber ¹	070 700mA 035 350mA (2L & 18L only)	2 Type I ² 3 Type II ³ 4 Type III ⁴ 5 Type IV ⁵ 6 Type V ⁶ 7 Type VI ⁷ 8 Type VII ⁸ 9 Type VIII ⁹ 10 Type IX ¹⁰ 11 Type X ¹¹ 12 Type XI ¹² 13 Type XII ¹³ 14 Type XIII ¹⁴ 15 Type XIV ¹⁵ 16 Type XV ¹⁶ 17 Type XVI ¹⁷ 18 Type XVII ¹⁸ 19 Type XVIII ¹⁹ 20 Type XIX ²⁰ 21 Type XX ²¹ 22 Type XXI ²² 23 Type XXII ²³ 24 Type XXIII ²⁴ 25 Type XXIV ²⁵ 26 Type XXV ²⁶ 27 Type XXVI ²⁷ 28 Type XXVII ²⁸ 29 Type XXVIII ²⁹ 30 Type XXIX ³⁰ 31 Type XXX ³¹ 32 Type XXXI ³² 33 Type XXXII ³³ 34 Type XXXIII ³⁴ 35 Type XXXIV ³⁵ 36 Type XXXV ³⁶ 37 Type XXXVI ³⁷ 38 Type XXXVII ³⁸ 39 Type XXXVIII ³⁹ 40 Type XXXIX ⁴⁰ 41 Type XL ⁴¹ 42 Type XLI ⁴² 43 Type XLII ⁴³ 44 Type XLIII ⁴⁴ 45 Type XLIV ⁴⁵ 46 Type XLV ⁴⁶ 47 Type XLVI ⁴⁷ 48 Type XLVII ⁴⁸ 49 Type XLVIII ⁴⁹ 50 Type XLIX ⁵⁰ 51 Type XLX ⁵¹ 52 Type LI ⁵² 53 Type LII ⁵³ 54 Type LIII ⁵⁴ 55 Type LIV ⁵⁵ 56 Type LV ⁵⁶ 57 Type LVI ⁵⁷ 58 Type LVII ⁵⁸ 59 Type LVIII ⁵⁹ 60 Type LIX ⁶⁰ 61 Type LX ⁶¹ 62 Type LXI ⁶² 63 Type LXII ⁶³ 64 Type LXIII ⁶⁴ 65 Type LXIV ⁶⁵ 66 Type LXV ⁶⁶ 67 Type LXVI ⁶⁷ 68 Type LXVII ⁶⁸ 69 Type LXVIII ⁶⁹ 70 Type LXIX ⁷⁰ 71 Type LXX ⁷¹ 72 Type LXXI ⁷² 73 Type LXXII ⁷³ 74 Type LXXIII ⁷⁴ 75 Type LXXIV ⁷⁵ 76 Type LXXV ⁷⁶ 77 Type LXXVI ⁷⁷ 78 Type LXXVII ⁷⁸ 79 Type LXXVIII ⁷⁹ 80 Type LXXIX ⁸⁰ 81 Type LXXX ⁸¹ 82 Type LXXXI ⁸² 83 Type LXXXII ⁸³ 84 Type LXXXIII ⁸⁴ 85 Type LXXXIV ⁸⁵ 86 Type LXXXV ⁸⁶ 87 Type LXXXVI ⁸⁷ 88 Type LXXXVII ⁸⁸ 89 Type LXXXVIII ⁸⁹ 90 Type LXXXIX ⁹⁰ 91 Type LXXXX ⁹¹ 92 Type LXXXXI ⁹² 93 Type LXXXXII ⁹³ 94 Type LXXXXIII ⁹⁴ 95 Type LXXXXIV ⁹⁵ 96 Type LXXXXV ⁹⁶ 97 Type LXXXXVI ⁹⁷ 98 Type LXXXXVII ⁹⁸ 99 Type LXXXXVIII ⁹⁹ 100 Type LXXXXIX ¹⁰⁰ 101 Type LXXXXX ¹⁰¹ 102 Type LXXXXXI ¹⁰² 103 Type LXXXXXII ¹⁰³ 104 Type LXXXXXIII ¹⁰⁴ 105 Type LXXXXXIV ¹⁰⁵ 106 Type LXXXXXV ¹⁰⁶ 107 Type LXXXXXVI ¹⁰⁷ 108 Type LXXXXXVII ¹⁰⁸ 109 Type LXXXXXVIII ¹⁰⁹ 110 Type LXXXXXIX ¹¹⁰ 111 Type LXXXXXX ¹¹¹ 112 Type LXXXXXXI ¹¹² 113 Type LXXXXXXII ¹¹³ 114 Type LXXXXXXIII ¹¹⁴ 115 Type LXXXXXXIV ¹¹⁵ 116 Type LXXXXXXV ¹¹⁶ 117 Type LXXXXXXVI ¹¹⁷ 118 Type LXXXXXXVII ¹¹⁸ 119 Type LXXXXXXVIII ¹¹⁹ 120 Type LXXXXXXIX ¹²⁰ 121 Type LXXXXXXX ¹²¹ 122 Type LXXXXXXXI ¹²² 123 Type LXXXXXXXII ¹²³ 124 Type LXXXXXXXIII ¹²⁴ 125 Type LXXXXXXXIV ¹²⁵ 126 Type LXXXXXXXV ¹²⁶ 127 Type LXXXXXXXVI ¹²⁷ 128 Type LXXXXXXXVII ¹²⁸ 129 Type LXXXXXXXVIII ¹²⁹ 130 Type LXXXXXXXIX ¹³⁰ 131 Type LXXXXXXX ¹³¹ 132 Type LXXXXXXXI ¹³² 133 Type LXXXXXXXII ¹³³ 134 Type LXXXXXXXIII ¹³⁴ 135 Type LXXXXXXXIV ¹³⁵ 136 Type LXXXXXXXV ¹³⁶ 137 Type LXXXXXXXVI ¹³⁷ 138 Type LXXXXXXXVII ¹³⁸ 139 Type LXXXXXXXVIII ¹³⁹ 140 Type LXXXXXXXIX ¹⁴⁰ 141 Type LXXXXXXX ¹⁴¹ 142 Type LXXXXXXXI ¹⁴² 143 Type LXXXXXXXII ¹⁴³ 144 Type LXXXXXXXIII ¹⁴⁴ 145 Type LXXXXXXXIV ¹⁴⁵ 146 Type LXXXXXXXV ¹⁴⁶ 147 Type LXXXXXXXVI ¹⁴⁷ 148 Type LXXXXXXXVII ¹⁴⁸ 149 Type LXXXXXXXVIII ¹⁴⁹ 150 Type LXXXXXXXIX ¹⁵⁰ 151 Type LXXXXXXX ¹⁵¹ 152 Type LXXXXXXXI ¹⁵² 153 Type LXXXXXXXII ¹⁵³ 154 Type LXXXXXXXIII ¹⁵⁴ 155 Type LXXXXXXXIV ¹⁵⁵ 156 Type LXXXXXXXV ¹⁵⁶ 157 Type LXXXXXXXVI ¹⁵⁷ 158 Type LXXXXXXXVII ¹⁵⁸ 159 Type LXXXXXXXVIII ¹⁵⁹ 160 Type LXXXXXXXIX ¹⁶⁰ 161 Type LXXXXXXX ¹⁶¹ 162 Type LXXXXXXXI ¹⁶² 163 Type LXXXXXXXII ¹⁶³ 164 Type LXXXXXXXIII ¹⁶⁴ 165 Type LXXXXXXXIV ¹⁶⁵ 166 Type LXXXXXXXV ¹⁶⁶ 167 Type LXXXXXXXVI ¹⁶⁷ 168 Type LXXXXXXXVII ¹⁶⁸ 169 Type LXXXXXXXVIII ¹⁶⁹ 170 Type LXXXXXXXIX ¹⁷⁰ 171 Type LXXXXXXX ¹⁷¹ 172 Type LXXXXXXXI ¹⁷² 173 Type LXXXXXXXII ¹⁷³ 174 Type LXXXXXXXIII ¹⁷⁴ 175 Type LXXXXXXXIV ¹⁷⁵ 176 Type LXXXXXXXV ¹⁷⁶ 177 Type LXXXXXXXVI ¹⁷⁷ 178 Type LXXXXXXXVII ¹⁷⁸ 179 Type LXXXXXXXVIII ¹⁷⁹ 180 Type LXXXXXXXIX ¹⁸⁰ 181 Type LXXXXXXX ¹⁸¹ 182 Type LXXXXXXXI ¹⁸² 183 Type LXXXXXXXII ¹⁸³ 184 Type LXXXXXXXIII ¹⁸⁴ 185 Type LXXXXXXXIV ¹⁸⁵ 186 Type LXXXXXXXV ¹⁸⁶ 187 Type LXXXXXXXVI ¹⁸⁷ 188 Type LXXXXXXXVII ¹⁸⁸ 189 Type LXXXXXXXVIII ¹⁸⁹ 190 Type LXXXXXXXIX ¹⁹⁰ 191 Type LXXXXXXX ¹⁹¹ 192 Type LXXXXXXXI ¹⁹² 193 Type LXXXXXXXII ¹⁹³ 194 Type LXXXXXXXIII ¹⁹⁴ 195 Type LXXXXXXXIV ¹⁹⁵ 196 Type LXXXXXXXV ¹⁹⁶ 197 Type LXXXXXXXVI ¹⁹⁷ 198 Type LXXXXXXXVII ¹⁹⁸ 199 Type LXXXXXXXVIII ¹⁹⁹ 200 Type LXXXXXXXIX ²⁰⁰ 201 Type LXXXXXXX ²⁰¹ 202 Type LXXXXXXXI ²⁰² 203 Type LXXXXXXXII ²⁰³ 204 Type LXXXXXXXIII ²⁰⁴ 205 Type LXXXXXXXIV ²⁰⁵ 206 Type LXXXXXXXV ²⁰⁶ 207 Type LXXXXXXXVI ²⁰⁷ 208 Type LXXXXXXXVII ²⁰⁸ 209 Type LXXXXXXXVIII ²⁰⁹ 210 Type LXXXXXXXIX ²¹⁰ 211 Type LXXXXXXX ²¹¹ 212 Type LXXXXXXXI ²¹² 213 Type LXXXXXXXII ²¹³ 214 Type LXXXXXXXIII ²¹⁴ 215 Type LXXXXXXXIV ²¹⁵ 216 Type LXXXXXXXV ²¹⁶ 217 Type LXXXXXXXVI ²¹⁷ 218 Type LXXXXXXXVII ²¹⁸ 219 Type LXXXXXXXVIII ²¹⁹ 220 Type LXXXXXXXIX ²²⁰ 221 Type LXXXXXXX ²²¹ 222 Type LXXXXXXXI ²²² 223 Type LXXXXXXXII ²²³ 224 Type LXXXXXXXIII ²²⁴ 225 Type LXXXXXXXIV ²²⁵ 226 Type LXXXXXXXV ²²⁶ 227 Type LXXXXXXXVI ²²⁷ 228 Type LXXXXXXXVII ²²⁸ 229 Type LXXXXXXXVIII ²²⁹ 230 Type LXXXXXXXIX ²³⁰ 231 Type LXXXXXXX ²³¹ 232 Type LXXXXXXXI ²³² 233 Type LXXXXXXXII ²³³ 234 Type LXXXXXXXIII ²³⁴ 235 Type LXXXXXXXIV ²³⁵ 236 Type LXXXXXXXV ²³⁶ 237 Type LXXXXXXXVI ²³⁷ 238 Type LXXXXXXXVII ²³⁸ 239 Type LXXXXXXXVIII ²³⁹ 240 Type LXXXXXXXIX ²⁴⁰ 241 Type LXXXXXXX ²⁴¹ 242 Type LXXXXXXXI ²⁴² 243 Type LXXXXXXXII ²⁴³ 244 Type LXXXXXXXIII ²⁴⁴ 245 Type LXXXXXXXIV ²⁴⁵ 246 Type LXXXXXXXV ²⁴⁶ 247 Type LXXXXXXXVI ²⁴⁷ 248 Type LXXXXXXXVII ²⁴⁸ 249 Type LXXXXXXXVIII ²⁴⁹ 250 Type LXXXXXXXIX ²⁵⁰ 251 Type LXXXXXXX ²⁵¹ 252 Type LXXXXXXXI ²⁵² 253 Type LXXXXXXXII ²⁵³ 254 Type LXXXXXXXIII ²⁵⁴ 255 Type LXXXXXXXIV ²⁵⁵ 256 Type LXXXXXXXV ²⁵⁶ 257 Type LXXXXXXXVI ²⁵⁷ 258 Type LXXXXXXXVII ²⁵⁸ 259 Type LXXXXXXXVIII ²⁵⁹ 260 Type LXXXXXXXIX ²⁶⁰ 261 Type LXXXXXXX ²⁶¹ 262 Type LXXXXXXXI ²⁶² 263 Type LXXXXXXXII ²⁶³ 264 Type LXXXXXXXIII ²⁶⁴ 265 Type LXXXXXXXIV ²⁶⁵ 266 Type LXXXXXXXV ²⁶⁶ 267 Type LXXXXXXXVI ²⁶⁷ 268 Type LXXXXXXXVII ²⁶⁸ 269 Type LXXXXXXXVIII ²⁶⁹ 270 Type LXXXXXXXIX ²⁷⁰ 271 Type LXXXXXXX ²⁷¹ 272 Type LXXXXXXXI ²⁷² 273 Type LXXXXXXXII ²⁷³ 274 Type LXXXXXXXIII ²⁷⁴ 275 Type LXXXXXXXIV ²⁷⁵ 276 Type LXXXXXXXV ²⁷⁶ 277 Type LXXXXXXXVI ²⁷⁷ 278 Type LXXXXXXXVII ²⁷⁸ 279 Type LXXXXXXXVIII ²⁷⁹ 280 Type LXXXXXXXIX ²⁸⁰ 281 Type LXXXXXXX ²⁸¹ 282 Type LXXXXXXXI ²⁸² 283 Type LXXXXXXXII ²⁸³ 284 Type LXXXXXXXIII ²⁸⁴ 285 Type LXXXXXXXIV ²⁸⁵ 286 Type LXXXXXXXV ²⁸⁶ 287 Type LXXXXXXXVI ²⁸⁷ 288 Type LXXXXXXXVII ²⁸⁸ 289 Type LXXXXXXXVIII ²⁸⁹ 290 Type LXXXXXXXIX ²⁹⁰ 291 Type LXXXXXXX ²⁹¹ 292 Type LXXXXXXXI ²⁹² 293 Type LXXXXXXXII ²⁹³ 294 Type LXXXXXXXIII ²⁹⁴ 295 Type LXXXXXXXIV ²⁹⁵ 296 Type LXXXXXXXV ²⁹⁶ 297 Type LXXXXXXXVI ²⁹⁷ 298 Type LXXXXXXXVII ²⁹⁸ 299 Type LXXXXXXXVIII ²⁹⁹ 300 Type LXXXXXXXIX ³⁰⁰ 301 Type LXXXXXXX ³⁰¹ 302 Type LXXXXXXXI ³⁰² 303 Type LXXXXXXXII ³⁰³ 304 Type LXXXXXXXIII ³⁰⁴ 305 Type LXXXXXXXIV ³⁰⁵ 306 Type LXXXXXXXV ³⁰⁶ 307 Type LXXXXXXXVI ³⁰⁷ 308 Type LXXXXXXXVII ³⁰⁸ 309 Type LXXXXXXXVIII ³⁰⁹ 310 Type LXXXXXXXIX ³¹⁰ 311 Type LXXXXXXX ³¹¹ 312 Type LXXXXXXXI ³¹² 313 Type LXXXXXXXII ³¹³ 314 Type LXXXXXXXIII ³¹⁴ 315 Type LXXXXXXXIV ³¹⁵ 316 Type LXXXXXXXV ³¹⁶ 317 Type LXXXXXXXVI ³¹⁷ 318 Type LXXXXXXXVII ³¹⁸ 319 Type LXXXXXXXVIII ³¹⁹ 320 Type LXXXXXXXIX ³²⁰ 321 Type LXXXXXXX ³²¹ 322 Type LXXXXXXXI ³²² 323 Type LXXXXXXXII ³²³ 324 Type LXXXXXXXIII ³²⁴ 325 Type LXXXXXXXIV ³²⁵ 326 Type LXXXXXXXV ³²⁶ 327 Type LXXXXXXXVI ³²⁷ 328 Type LXXXXXXXVII ³²⁸ 329 Type LXXXXXXXVIII ³²⁹ 330 Type LXXXXXXXIX ³³⁰ 331 Type LXXXXXXX ³³¹ 332 Type LXXXXXXXI ³³² 333 Type LXXXXXXXII ³³³ 334 Type LXXXXXXXIII ³³⁴ 335 Type LXXXXXXXIV ³³⁵ 336 Type LXXXXXXXV ³³⁶ 337 Type LXXXXXXXVI ³³⁷ 338 Type LXXXXXXXVII ³³⁸ 339 Type LXXXXXXXVIII ³³⁹ 340 Type LXXXXXXXIX ³⁴⁰ 341 Type LXXXXXXX ³⁴¹ 342 Type LXXXXXXXI ³⁴² 343 Type LXXXXXXXII ³⁴³ 344 Type LXXXXXXXIII ³⁴⁴ 345 Type LXXXXXXXIV ³⁴⁵ 346 Type LXXXXXXXV ³⁴⁶ 347 Type LXXXXXXXVI ³⁴⁷ 348 Type LXXXXXXXVII ³⁴⁸ 349 Type LXXXXXXXVIII ³⁴⁹ 350 Type LXXXXXXXIX ³⁵⁰ 351 Type LXXXXXXX ³⁵¹ 352 Type LXXXXXXXI ³⁵² 353 Type LXXXXXXXII ³⁵³ 354 Type LXXXXXXXIII ³⁵⁴ 355 Type LXXXXXXXIV ³⁵⁵ 356 Type LXXXXXXXV ³⁵⁶ 357 Type LXXXXXXXVI ³⁵⁷ 358 Type LXXXXXXXVII ³⁵⁸ 359 Type LXXXXXXXVIII ³⁵⁹ 360 Type LXXXXXXXIX ³⁶⁰ 361 Type LXXXXXXX ³⁶¹ 362 Type LXXXXXXXI ³⁶² 363 Type LXXXXXXXII ³⁶³ 364 Type LXXXXXXXIII ³⁶⁴ 365 Type LXXXXXXXIV ³⁶⁵ 366 Type LXXXXXXXV ³⁶⁶ 367 Type LXXXXXXXVI ³⁶⁷ 368 Type LXXXXXXXVII ³⁶⁸ 369 Type LXXXXXXXVIII ³⁶⁹ 370 Type LXXXXXXXIX ³⁷⁰ 371 Type LXXXXXXX ³⁷¹ 372 Type LXXXXXXXI ³⁷² 373 Type LXXXXXXXII ³⁷³ 374 Type LXXXXXXXIII ³⁷⁴ 375 Type LXXXXXXXIV ³⁷⁵ 376 Type LXXXXXXXV ³⁷⁶ 377 Type LXXXXXXXVI ³⁷⁷ 378 Type LXXXXXXXVII ³⁷⁸ 379 Type LXXXXXXXVIII ³⁷⁹ 380 Type LXXXXXXXIX ³⁸⁰ 381 Type LXXXXXXX ³⁸¹ 382 Type LXXXXXXXI ³⁸² 383 Type LXXXXXXXII ³⁸³ 384 Type LXXXXXXXIII ³⁸⁴ 385 Type LXXXXXXXIV ³⁸⁵ 386 Type LXXXXXXXV ³⁸⁶ 387 Type LXXXXXXXVI ³⁸⁷ 388 Type LXXXXXXXVII ³⁸⁸ 389 Type LXXXXXXXVIII ³⁸⁹ 390 Type LXXXXXXXIX ³⁹⁰ 391 Type LXXXXXXX ³⁹¹ 392 Type LXXXXXXXI ³⁹² 393 Type LXXXXXXXII ³⁹³ 394 Type LXXXXXXXIII ³⁹⁴ 395 Type LXXXXXXXIV ³⁹⁵ 396 Type LXXXXXXXV ³⁹⁶ 397 Type LXXXXXXXVI ³⁹⁷ 398 Type LXXXXXXXVII ³⁹⁸ 399 Type LXXXXXXXVIII ³⁹⁹ 400 Type LXXXXXXXIX ⁴⁰⁰ 401 Type LXXXXXXX ⁴⁰¹ 402 Type LXXXXXXXI ⁴⁰² 403 Type LXXXXXXXII ⁴⁰³ 404 Type LXXXXXXXIII ⁴⁰⁴ 405 Type LXXXXXXXIV ⁴⁰⁵ 406 Type LXXXXXXXV ⁴⁰⁶ 407 Type LXXXXXXXVI ⁴⁰⁷ 408 Type LXXXXXXXVII ⁴⁰⁸ 409 Type LXXXXXXXVIII ⁴⁰⁹ 410 Type LXXXXXXXIX ⁴¹⁰ 411 Type LXXXXXXX ⁴¹¹ 412 Type LXXXXXXXI ⁴¹² 413 Type LXXXXXXXII ⁴¹³ 414 Type LXXXXXXXIII ⁴¹⁴ 415 Type LXXXXXXXIV ⁴¹⁵ 416 Type LXXXXXXXV ⁴¹⁶ 417 Type LXXXXXXXVI ⁴¹⁷ 418 Type LXXXXXXXVII ⁴¹⁸ 419 Type LXXXXXXXVIII ⁴¹⁹ 420 Type LXXXXXXXIX ⁴²⁰ 421 Type LXXXXXXX ⁴²¹ 422 Type LXXXXXXXI ⁴²² 423 Type LXXXXXXXII ⁴²³ 424 Type LXXXXXXXIII ⁴²⁴ 425 Type LXXXXXXXIV ⁴²⁵ 426 Type LXXXXXXXV ⁴²⁶ 427 Type LXXXXXXXVI ⁴²⁷ 428 Type LXXXXXXXVII ⁴²⁸ 429 Type LXXXXXXXVIII ⁴²⁹ 430 Type LXXXXXXXIX ⁴³⁰ 431 Type LXXXXXXX ⁴³¹ 432 Type LXXXXXXXI ⁴³² 433 Type LXXXXXXXII ⁴³³ 434 Type LXXXXXXXIII ⁴³⁴ 435 Type LXXXXXXXIV ⁴³⁵ 436 Type LXXXXXXXV ⁴³⁶ 437 Type LXXXXXXXVI ⁴³⁷ 438 Type LXXXXXXXVII ⁴³⁸ 439 Type LXXXXXXXVIII ⁴³⁹ 440 Type LXXXXXXXIX ⁴⁴⁰ 441 Type LXXXXXXX ⁴⁴¹ 442 Type LXXXXXXXI ⁴⁴² 443 Type LXXXXXXXII ⁴⁴³ 444 Type LXXXXXXXIII ⁴⁴⁴ 445 Type LXXXXXXXIV ⁴⁴⁵ 446 Type LXXXXXXXV ⁴⁴⁶ 447 Type LXXXXXXXVI ⁴⁴⁷ 448 Type LXXXXXXXVII ⁴⁴⁸ 449 Type LXXXXXXXVIII ⁴⁴⁹ 450 Type LXXXXXXXIX ⁴⁵⁰ 451 Type LXXXXXXX ⁴⁵¹ 452 Type LXXXXXXXI ⁴⁵² 453 Type LXXXXXXXII ⁴⁵³ 454 Type LXXXXXXXIII ⁴⁵⁴ 455 Type LXXXXXXXIV ⁴⁵⁵ 456 Type LXXXXXXXV ⁴⁵⁶ 457 Type LXXXXXXXVI ⁴⁵⁷ 458 Type LXXXXXXXVII ⁴⁵⁸ 459 Type LXXXXXXXVIII ⁴⁵⁹ 460 Type LXXXXXXXIX ⁴⁶⁰ 461 Type LXXXXXXX ⁴⁶¹ 462 Type LXXXXXXXI ⁴⁶² 463 Type LXXXXXXXII ⁴⁶³ 464 Type LXXXXXXXIII ⁴⁶⁴ 465 Type LXXXXXXXIV ⁴⁶⁵ 466 Type LXXXXXXXV ⁴⁶⁶ 467 Type LXXXXXXXVI ⁴⁶⁷ 468 Type LXXXXXXXVII ⁴⁶⁸ 469 Type LXXXXXXXVIII ⁴⁶⁹ 470 Type LXXXXXXXIX ⁴⁷⁰ 471 Type LXXXXXXX ⁴⁷¹ 472 Type LXXXXXXXI ⁴⁷² 473 Type LXXXXXXXII ⁴⁷³ 474 Type LXXXXXXXIII ⁴⁷⁴ 475 Type LXXXXXXXIV ⁴⁷⁵ 476 Type LXXXXXXXV ⁴⁷⁶ 477 Type LXXXXXXXVI ⁴⁷⁷ 478 Type LXXXXXXXVII ⁴⁷⁸ 479 Type LXXXXXXXVIII ⁴⁷⁹ 480 Type LXXXXXXXIX ⁴⁸⁰ 481 Type LXXXXXXX ⁴⁸¹ 482 Type LXXXXXXXI ⁴⁸² 483 Type LXXXXXXXII ⁴⁸³ 484 Type LXXXXXXXIII ⁴⁸⁴ 485 Type LXXXXXXXIV ⁴⁸⁵ 486 Type LXXXXXXXV ⁴⁸⁶ 487 Type LXXXXXXXVI ⁴⁸⁷ 488 Type LXXXXXXXVII ⁴⁸⁸ 489 Type LXXXXXXXVIII ⁴⁸⁹ 490 Type LXXXXXXXIX ⁴⁹⁰ 491 Type LXXXXXXX ⁴⁹¹ 492 Type LXXXXXXXI ⁴⁹² 493 Type LXXXXXXXII ⁴⁹³ 494 Type LXXXXXXXIII ⁴⁹⁴ 495 Type LXXXXXXXIV ⁴⁹⁵ 496 Type LXXXXXXXV ⁴⁹⁶ 497 Type LXXXXXXXVI ⁴⁹⁷ 498 Type LXXXXXXXVII ⁴⁹⁸ 499 Type LXXXXXXXVIII ⁴⁹⁹ 500 Type LXXXXXXXIX ⁵⁰⁰ 501 Type LXXXXXXX ⁵⁰¹ 502 Type LXXXXXXXI ⁵⁰² 503 Type LXXXXXXXII ⁵⁰³ 504 Type LXXXXXXXIII ⁵⁰⁴ 505 Type LXXXXXXXIV ⁵⁰⁵ 506 Type LXXXXXXXV ⁵⁰⁶ 507 Type LXXXXXXXVI ⁵⁰⁷ 508 Type LXXXXXXXVII ⁵⁰⁸ 509 Type LXXXXXXXVIII ⁵⁰⁹ 510 Type LXXXXXXXIX ⁵¹⁰ 511 Type LXXXXXXX ⁵¹¹ 512 Type LXXXXXXXI ⁵¹² 513 Type LXXXXXXXII ⁵¹³ 514 Type LXXXXXXXIII ⁵¹⁴ 515 Type LXXXXXXXIV ⁵¹⁵ 516 Type LXXXXXXXV ⁵¹⁶ 517 Type LXXXXXXXVI ⁵¹⁷ 518 Type LXXXXXXXVII ⁵¹⁸ 519 Type LXXXXXXXVIII ⁵¹⁹ 520 Type LXXXXXXXIX ⁵²⁰ 521 Type LXXXXXXX ⁵²¹ 522 Type LXXXXXXXI ⁵²² 523 Type LXXXXXXXII ⁵²³ 524 Type LXXXXXXXIII ⁵²⁴ 525 Type LXXXXXXXIV ⁵²⁵ 526 Type LXXXXXXXV ⁵²⁶ 527 Type LXXXXXXXVI ⁵²⁷ 528 Type LXXXXXXXVII ⁵²⁸ 529 Type LXXXXXXXVIII ⁵²⁹ 530 Type LXXXXXXXIX ⁵³⁰ 531 Type LXXXXXXX ⁵³¹ 532 Type LXXXXXXXI ⁵³² 533 Type LXXXXXXXII ⁵³³ 534 Type LXXXXXXXIII ⁵³⁴ 535 Type LXXXXXXXIV ⁵³⁵ 536 Type LXXXXXXXV ⁵³⁶ 537 Type LXXXXXXXVI ⁵³⁷ 538 Type LXXXXXXXVII ⁵³⁸ 539 Type LXXXXXXXVIII ⁵³⁹ 540 Type LXXXXXXXIX ⁵⁴⁰ 541 Type LXXXXXXX ⁵⁴¹ 542 Type LXXXXXXXI ⁵⁴² 543 Type LXXXXXXXII ⁵⁴³ 544 Type LXXXXXXXIII ⁵⁴⁴ 545 Type LXXXXXXXIV ⁵⁴⁵ 546 Type LXXXXXXXV ⁵⁴⁶ 547 Type LXXXXXXXVI ⁵⁴⁷ 548 Type LXXXXXXXVII ⁵⁴⁸ 549 Type LXXXXXXXVIII ⁵⁴⁹ 550 Type LXXXXXXXIX ⁵⁵⁰ 551 Type LXXXXXXX ⁵⁵¹ 552 Type LXXXXXXXI ⁵⁵² 553 Type LXXXXXXXII ⁵⁵³ 554 Type LXXXXXXXIII ⁵⁵⁴ 555 Type LXXXXXXXIV ⁵⁵⁵ 556 Type LXXXXXXXV ⁵⁵⁶ 557 Type LXXXXXXXVI ⁵⁵⁷ 558 Type LXXXXXXXVII ⁵⁵⁸ 559 Type LXXXXXXXVIII ⁵⁵⁹ 560 Type LXXXXXXXIX ⁵⁶⁰ 561 Type LXXXXXXX ⁵⁶¹ 562 Type LXXXXXXXI ⁵⁶² 563 Type		

Design Guidelines

Section 11-6-3 (Multiple Residence in Commercial)

✓	Wall and roof articulation
✓	Parapet detailing
✓	Incorporates balconies to create architectural interest
✓	All visible facades incorporate details

Summary

Findings

- ✓ Staff is seeking your review and recommendation on the following:
 - ✓ Proposed building elevations
 - ✓ Proposed landscape plan



DESIGN REVIEW BOARD

October 12, 2021