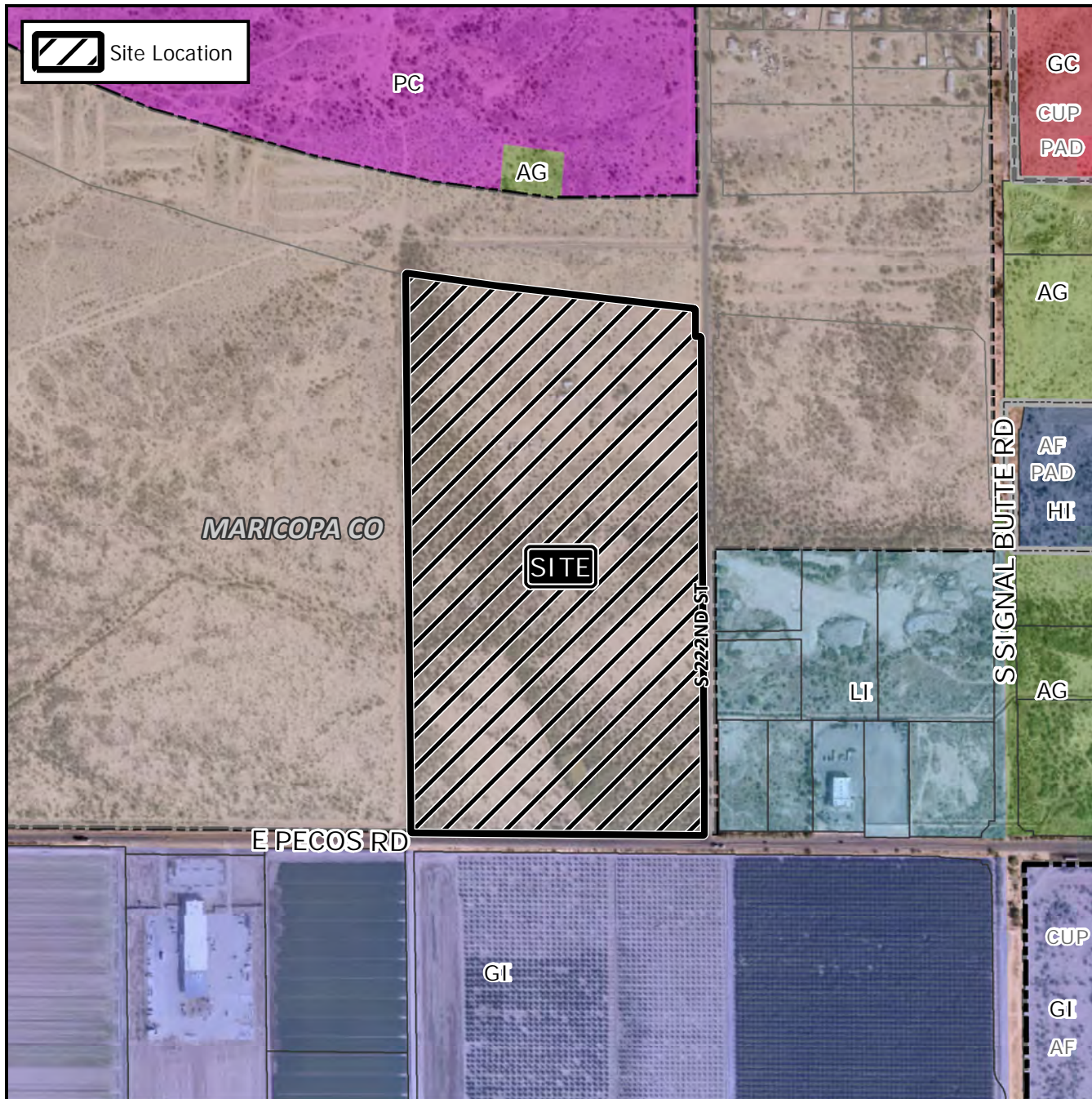


Design Review Vicinity Map: DRB21-00877



Case Details

Case:

DRB21-00877

Site / Address:

District 6. Within the 10400 to 10600 blocks of East Pecos Road (north side) and within the 6400 to 6800 blocks of South 222nd Street (west side). Located west of Signal Butte Road on the north side of Pecos Road. (71.3± acres).

Request:

Requesting the review of an industrial development.

