

BUILDING ELEVATION CODED NOTES

- CONCRETE WALL PANELS WITH REVEALS AND TEXTURED PAINT COATING. PAINT EXPOSED INTERIOR FACE OF CONCRETE WALL PANELS. (P-6)
- CONCRETE WALL PANELS WITH 1/2" WIDE PLANK, RANDOM DEPTH PATTERN, FITZGERALD FORMLINERS, PATTERN #6021. WWW.FORMLINERS.COM 1800.541.1160
- PANEL JOINT WITH SEALANT. (TYP.) (SEE DETAILS F & I/A-404)
- BUILDING EXPANSION JOINT. (SEE DETAIL A/A-404 AND STRUCTURAL SHEETS)
- 3" WIDE X 1/2" DEEP REVEAL. (SEE DETAIL T I/A-404)
- 1" WIDE X 1/2" DEEP REVEAL
- LINE OF CONCRETE FOOTING. (SEE STRUCTURAL SHEETS)
- STEP IN C.I.P. CONCRETE FOOTING. (SEE STRUCTURAL SHEETS)
- 4" THICK (MIN) CONCRETE SIDEWALK ON COMPACTED GRANULAR BASE. SLOPE 1/4" PER FOOT (2%) AWAY FROM BUILDING. CONCRETE TO BE STANDARD GRAY CONCRETE WITH LIGHT BROOKLYN FINISH UNLESS NOTED OTHERWISE. (SEE CIVIL SHEETS)
- 5'-0" x 6'-0" x 4" DEEP CONCRETE STOOP, SLOPE 2% MAX. AWAY FROM BUILDING. (SEE DETAIL K/A-153)
- CONCRETE STAIRS WITH 1 1/2" DIA. GUARDRAIL AND 1/4" DIA. HANDRAIL. (GLV-1)
- CONCRETE RAMP, RETAINING WALLS, AND STAIRS WITH PAINTED METAL GUARDRAIL AT DRIVE-THRU OVERHEAD DOORS. (SEE STRUCTURAL SHEETS) (SEE SECTIONS ON SHEET A-503)
- 2" DIA. GALVANIZED METAL GUARDRAIL AT 42" AFF. WITH INTERFERED LATE RAIL AT 37" AFF. AND POSTS AT 6'-0" O.C. MAX. (SEE DETAILS ON SHEET A-204)
- EXTERIOR GALVANIZED METAL STAIR WITH 1 1/2" DIA. GUARDRAIL AND 1/4" DIA. HANDRAIL. PROVIDE (2) 6" DIA. BOLLARDS. (SEE DETAILS ON SHEET A-204)
- 6" DIA. GALV. CONCRETE-FILLED STEEL BOLLARD, PROVIDE REPLACEABLE YELLOW SLEEVE. (SEE DETAIL C/A-153)
- PREFINISHED ALUMINUM WINDOW SYSTEM WITH 1" INSULATED GLAZING. (SEE ELEVATIONS ON SHEET A-400)
- 3'-0" x 1'-0" WIDE STYLE ALUMINUM STOREFRONT ENTRANCE DOORS WITH 1" INSULATED TEMPERED CLEAR GLASS. (SEE DOOR AND FRAME SCHEDULE ON SHEET A-400) (SF-1)
- INSULATED HOLLOW METAL SERVICE DOOR AND FRAME, PAINT SEMI-GLOSS, GROUT FRAME SOLID. (SEE DOOR AND FRAME SCHEDULE ON SHEET A-400)
- EMERGENCY EGRESS LIGHT FIXTURE, CENTER ABOVE DOOR AT 9'-0" AFF. UNO. (SEE ELECTRICAL SHEETS)
- 14'-0" x 16'-0" INSULATED OVERHEAD SECTIONAL DRIVE-THRU DOOR. (SEE DOOR AND FRAME SCHEDULE ON SHEET A-400) PROVIDE (4) 6" DIA. BOLLARDS (TYP.)
- 9'-0" x 10'-0" INSULATED OVERHEAD SECTIONAL DOOR DOCK EQUIPMENT. SEE DOCK EQUIPMENT SCHEDULE ON SHEET A-400 FOR DOCK EQUIPMENT. (SEE DOOR AND FRAME SCHEDULE ON SHEET A-400) SEE DETAILS ON SHEET A-403
- KNOCK-OUT PANEL FOR FUTURE WINDOW / DOCK DOOR AND LEVELER. SHOW DASHED. (TYP.)
- DOCK SIGNAGE. (SEE DETAILS ON SHEET A-403)
- AUTOMATIC DOOR OPERATOR AND PEDESTAL. (SEE DOOR SCHEDULE ON SHEET A-400)
- STEEL FRAMED CANOPY, TIE DOWNSPOUTS INTO UNDERGROUND STORY SYSTEM. SHEET DRAINING WILL NOT BE ACCEPTED. (SEE PLUMBING AND CIVIL SHEETS) (SEE SHEET A-304)
- 2" x 1" BLACK VINYL COATED WOVEN WIRE MESH (10 GA.) SECURITY FENCING. TERMINATE ENCLOSURE AT UNDERSIDE OF CANOPY STRUCTURE. (WIRE CRAFTERS, 1800.636.1816 OR APPROVED EQUAL.)
- 2" x 1" BLACK VINYL COATED WOVEN WIRE MESH (10 GA.) SECURITY GATE WITH EXIT DEVICE. (SEE DOOR AND FRAME SCHEDULE ON SHEET A-400) (WIRE CRAFTERS, 1800.636.1816 OR APPROVED EQUAL.)
- STEEL FRAMED ENTRY CANOPY WITH PREFINISHED COMPOSITE ALUMINUM PANEL FASCIA AND CEILING SYSTEM. (SEE BUILDING SECTIONS)
- FIRE-ENGINEERED SHOKER'S SHELTER. (SEE SHEET A-203)
- STAINLESS STEEL OVERFLOW NOZZLE w/ HINGED PERFORATED COVER. SEE PLUMBING SHEETS FOR SIZE. MOUNT AT 24" ABOVE FINISHED ADJACENT SURFACE. EQUAL TO ZURN MODEL #293-DC. WWW.ZURN.COM 184.455.9521. (SEE DETAIL F/A-306)
- 48"-Ø H. ALUMINUM FLAG POLE WITH CONCRETE BASE. G.C. SHALL PROVIDE GROUND MOUNTED LIGHT FIXTURE AT EACH POLE. (TYP. OF 3) (SEE CIVIL SHEETS) (SEE ELECTRICAL SHEETS)
- NEW HEAVY DUTY UNDER BIKE RACK BY MADRAX. (1800.448.1831) MODEL #4138-15-SF. (TYPICAL OF 2) PREFIN. BLACK. SEE SIDEWALK PLANS FOR LOCATIONS. (SEE CIVIL SHEETS)
- 8'-Ø H. DECORATIVE LIGHT POLE AND FIXTURE. (SEE ELECTRICAL DRAWINGS)
- LINE OF ROOF BEYOND.
- THRU-WALL DRAINAGE / OVERFLOW SCUPPER, SIZES VARY. SEE BUILDING ELEVATIONS. (SEE DETAILS E/A-306 AND E/A-307)
- PREFINISHED METAL COPING (24 GA.) OR FASCIA EDGE FLASHING (24 GA.). (SEE DETAIL J/A-304)
- 6" DIA. CONCRETE-FILLED STEEL BOLLARDS AT YELLOW. (TYP.) (SEE DETAIL E/A-153)
- MOTORIZED WALL LOUVER AT FIRE PUMP ROOM. (SEE MECHANICAL & ELECTRICAL SHEETS)
- FIRE ALARM SYSTEM SPEAKER/STROBE DEVICE (SEE FIRE PROTECTION SHEETS)
- SURFACE MOUNTED, HINGED DOOR FIRE DEPARTMENT KNOX BOX w/ TAPPER SWITCH. MOUNT AT 4'-6" ABOVE FINISH GRADE. (KNOX-BOX 3200 SERIES)
- COMPACTOR PROVIDED AND INSTALLED BY TENANT. G.C. TO PROVIDE ELECTRICAL CONNECTIONS. G.C. TO PROVIDE ELECTRICAL CONNECTIONS. (SEE ELECTRICAL SHEETS) SEE DOCK EQUIPMENT SCHEDULE ON SHEET A-400 FOR DOCK EQUIPMENT. (SEE DOOR AND FRAME SCHEDULE ON SHEET A-400)
- POWER COMPANY TRANSFORMER AND CONCRETE PAD. (SEE ELECTRICAL SHEETS)
- EMERGENCY BACK-UP GENERATOR AND CONCRETE PAD. (SEE ELECTRICAL SHEETS)
- GAS METER SET. (SEE PLUMBING SHEETS)
- HOSE BIBB. (SEE PLUMBING SHEETS) PROVIDE FROST PROOF SILLCOCK AT EXTERIOR WALLS. ENSURE ALL PIPING IS WITHIN THE THERMAL ENVELOPE.
- SURFACE MOUNTED WALL PACK LIGHT FIXTURE, CENTER FIXTURE IN PANEL. MOUNT CENTER OF FIXTURE AT 35'-0" AFF. (SEE ELECTRICAL SHEETS)
- 2" RECESSED AREA WITHIN CONCRETE WALL PANEL. (SEE DETAILS)
- CONCRETE DOCK PAD TO EXTEND 60"-Ø FROM FACE OF BUILDING. (SEE CIVIL ENGINEERING SHEETS FOR THICKNESS AND SLOPES)
- RETURN REVEALS ON ALL EXPOSED SIDES OF PIER.
- AREA OF FUTURE TENANT SIGNAGE.
- 1/4" GALVANIZED STEEL PLATE DOWNSPOUT GUARD, SECURE TO WALL WITH (3) 1/2" DIA. EXPANSION ANCHORS. PAINT. (SEE DETAIL D/A-307)
- COMPACTOR DOOR.
- PREFINISHED METAL (22 GA.) CONDUCTOR BOX AND 8" x 8" PREFINISHED METAL (22 GA.) DOWNSPOUT. (SEE DETAIL E/A-307) CONNECT TO STORY SYSTEM BELOW GRADE. (SEE PLUMBING AND CIVIL SHEETS)
- ROOF MOUNTED MECHANICAL EQUIPMENT, SHOWN DASHED.
- PREFINISHED ALUMINUM CLERESTORY WINDOW SYSTEM w/ 1" INSULATED GLAZING. (SEE ELEVATIONS ON SHEET A-400)

SHELL BUILDING MATERIAL FINISH KEY

MARK	MANUFACTURER	DESCRIPTION	REMARKS
EXTERIOR PAINT / TEXTURED ACRYLIC COATING (CONCRETE WALL PANELS)			
P-1	SHERWIN WILLIAMS	TEXTURED ACRYLIC COATING MATCH COLOR SW #1646 "FIRST STAR"	EXTERIOR FIELD COLOR EXTERIOR COLOR AT PUMP HOUSE (SEE ELEVATIONS PAINT AT METAL)
P-2	SHERWIN WILLIAMS	TEXTURED ACRYLIC COATING MATCH COLOR SW #1016 "MINDFUL GRAY"	EXTERIOR ACCENT COLOR HOLLOW METAL DOORS AND FRAMES (SEMI-GLOSS, LIGHT POLE BASES INSIDE CURBED ISLANDS)
P-3	SHERWIN WILLIAMS	TEXTURED ACRYLIC COATING MATCH COLOR SW #1011 "DORIAN GRAY"	EXTERIOR ACCENT COLOR AT WAREHOUSE EXTERIOR FIELD COLOR AT GUARDHOUSE
P-4	SHERWIN WILLIAMS	TEXTURED ACRYLIC COATING MATCH COLOR SW #1018 "DOVETAIL"	EXTERIOR ACCENT COLOR
P-5	SHERWIN WILLIAMS	TEXTURED ACRYLIC COATING MATCH COLOR SW #14 "MOTH WING"	EXTERIOR ACCENT COLOR AT GUARDHOUSE
P-6	SHERWIN WILLIAMS	TEXTURED ACRYLIC COATING MATCH COLOR PANTONE #355C	EXTERIOR ACCENT COLOR
P-7	SHERWIN WILLIAMS	SEMI-GLOSS PAINT (LOW VOC) "SAFETY YELLOW"	STEEL BOLLARDS, CURBS AND LIGHT POLE BASES OUTSIDE CURBED ISLANDS
P-8	SHERWIN WILLIAMS	SEMI-GLOSS PAINT, "BLACK" (OPTIONAL AS VINYL DECAL)	EXTERIOR ACCENT COLOR AT GUARDHOUSE
PREFINISHED METAL			
MTL-1	PAC-CLAD	24 GA. PREFINISHED ALUMINUM COLOR: "GRANITE"	METAL COPING, SCUPPERS, AND DOWNSPOUTS
COMPOSITE METAL PANELS (ENTRY CANOPY)			
CHP-1	ALPOLIC	4" H. UET SYSTEM COLOR - MATCH P-6	PROVIDE DOWN CORNING 785 SEALANT AT JOINTS. MATCH P-6
GALVANIZED METAL			
GLV-1	--	GALVANIZED STEEL (NO PAINT)	EXTERIOR METAL RAILINGS, STAIRS AND LANDINGS
STOREFRONT / WINDOW SYSTEM			
SF-1	KAUNER	PREFINISHED ALUMINUM COLOR - DARK BRONZE	STOREFRONT / WINDOW SYSTEM (TYP.)
AIR INTAKE LOUVERS			
LV-1	GREENHECK	PREFINISHED ALUMINUM (MATCH P-1) COLOR - "BONE WHITE", #GF02	BUILDING LOUVERS (TYP.) (L1 AND L3 ONLY)
LV-2	GREENHECK	PREFINISHED ALUMINUM (MATCH P-2) COLOR - "SMOKE", #GF04	BUILDING LOUVERS (TYP.) (L2 AND L4)

EXTERIOR COLOR LEGEND

P-1	TEXTURED ACRYLIC COATING SHERWIN WILLIAMS MATCH COLOR SW #1646 "FIRST STAR" (RGB 218 - 211 - 212)
P-2	TEXTURED ACRYLIC COATING SHERWIN WILLIAMS MATCH COLOR SW #1016 "MINDFUL GRAY" (RGB 188 - 183 - 173)
P-3	TEXTURED ACRYLIC COATING SHERWIN WILLIAMS MATCH COLOR SW #1011 "DORIAN GRAY" (RGB 172 - 161 - 158)
P-4	TEXTURED ACRYLIC COATING SHERWIN WILLIAMS MATCH COLOR SW #1018 "DOVETAIL" (RGB 144 - 138 - 131)
P-5	TEXTURED ACRYLIC COATING SHERWIN WILLIAMS MATCH COLOR SW #14 "MOTH WING" (RGB 160 - 144 - 127)
P-6	TEXTURED ACRYLIC COATING SHERWIN WILLIAMS ACCENT COLOR - PANTONE COLOR #355C (CMYK 83 - 1 - 0 - 0)

SHELL BUILDING FINISH NOTES

- SEE SPECIFICATIONS FOR EXTERIOR TEXTURED ACRYLIC COATING. COLORS TO MATCH SHERWIN WILLIAMS PAINT COLORS AS INDICATED IN SHELL BUILDING MATERIAL FINISH KEY.
- PAIN EXTERIOR HOLLOW METAL DOORS & FRAMES SEMI-GLOSS, COLOR TO MATCH P-2.
- PAINT CONCRETE FILLED STEEL BOLLARDS SEMI-GLOSS P-1 "SAFETY YELLOW".
- EXTERIOR CONCRETE WALL PANEL JOINTS TO BE SEALED WITH SONNEBORN NP-21 OR APPROVED EQUAL.
- PROVIDE 1-HR. RATED CONCRETE WALL PANEL JOINTS AT VERTICAL EXIT ENCLOSURES, (STAIRS) CONTROL JOINTS TO BE SEALED WITH SONNEBORN NP-21 OR APPROVED EQUAL.

SYMBOL LEGEND

22	SHELL BUILDING ELEVATION CODED NOTE TAG (SEE SHEET A-203 AND A-204 FOR SCHEDULE)
200	DOOR NUMBER TAG (SEE SHEET A-400 FOR DOOR SCHEDULE)
200	DOCK/COMPACTOR DOOR NUMBER TAG (SEE SHEET A-400 FOR DOOR SCHEDULE)
X (A-40)	STOREFRONT SYSTEM TAG (SEE SHEET A-400 FOR UNIT ELEVATIONS)
	MATERIAL / FINISH TAG (SEE SHEET A-203 AND A-204 FOR MATERIAL FINISH KEY)
	BUILDING EXPANSION JOINT (SEE DETAIL A/A-404)

EXTERIOR MATERIAL LEGEND

SOUTH ELEVATION	
TOTAL WALL AREA =	30,505 SF
CONCRETE WALL PANELS W/ TEXTURED PAINT =	18,078 SF 59 %
CONCRETE WALL PANELS W/ FORMLINERS & REVEAL =	1,655 SF 5 %
GLAZING =	3,561 SF 12 %
ARCHITECTURAL METALS =	1,209 SF 4 %

BUILDING ELEVATION CODED NOTES

- CONCRETE WALL PANELS WITH REVEALS AND TEXTURED PAINT COATING. PAINT EXPOSED INTERIOR FACE OF CONCRETE WALL PANELS. (P-1)
- CONCRETE WALL PANELS WITH 1/2" WIDE PLANK, RANDOM DEPTH PATTERN. FITZGERALD FORMLINERS, PATTERN #6021. WWW.FITZGERALDFORMLINERS.COM 1800.541.1160
- PANEL JOINT WITH SEALANT. (TYP) (SEE DETAILS F & I/A-404)
- BUILDING EXPANSION JOINT. (SEE DETAIL A/A-404 OR STRUCTURAL SHEETS)
- 3" WIDE x 1/2" DEEP REVEAL. (SEE DETAIL T & U/A-404)
- 1" WIDE x 1/2" DEEP REVEAL
- LINE OF CONCRETE FOOTING. (SEE STRUCTURAL SHEETS)
- STEP IN C.I.P. CONCRETE FOOTING. (SEE STRUCTURAL SHEETS)
- 4" THICK (MIN) CONCRETE SIDEWALK ON COMPACTED GRANULAR BASE. SLOPE 1/4" PER FOOT (2%) AWAY FROM BUILDING. CONCRETE TO BE STANDARD GRAY CONCRETE WITH LIGHT BROOK FINISH UNLESS NOTED OTHERWISE. (SEE CIVIL SHEETS)
- 5'-0" x 6'-0" x 4" DEEP CONCRETE STOOP, SLOPE 2% MAX. AWAY FROM BUILDING. (SEE DETAIL K/A-153)
- CONCRETE STAIRS WITH 1 1/2" DIA. GUARDRAIL AND 1/4" DIA. HANDRAIL. (GLV-1)
- CONCRETE RAMP, RETAINING WALLS, AND STAIRS WITH PAINTED METAL GUARDRAIL AT DRIVE-THRU OVERHEAD DOORS. (SEE STRUCTURAL SHEETS) (SEE SECTIONS ON SHEET A-503)
- 2" DIA. GALVANIZED METAL GUARDRAIL AT 42" AFF. WITH INTERFERED RAIL AT 37" AFF. AND POSTS AT 6'-0" O.C. MAX. (SEE DETAILS ON SHEET A-204)
- EXTERIOR GALVANIZED METAL STAIR WITH 1 1/2" DIA. GUARDRAIL AND 1/4" DIA. HANDRAIL. PROVIDE (2) 6" DIA. BOLLARDS. (SEE DETAILS ON SHEET A-204)
- 6" DIA. GALV. CONCRETE-FILLED STEEL BOLLARD. PROVIDE REPLACEABLE YELLOW SLEEVE. (SEE DETAIL C/A-153)
- PREFINISHED ALUMINUM WINDOW SYSTEM WITH 1" INSULATED GLAZING. (SEE ELEVATIONS ON SHEET A-401)
- ENTRANCE DOORS WITH 1" INSULATED THERMOFLEX CLEAR GLASS. (SEE DOOR AND FRAME SCHEDULE ON SHEET A-400) (SF-1)
- INSULATED HOLLOW METAL SERVICE DOOR AND FRAME. PAINT SEMI-GLOSS. GROUT FRAME SOLID. (SEE DOOR AND FRAME SCHEDULE ON SHEET A-400)
- EMERGENCY EGRESS LIGHT FIXTURE. CENTER ABOVE DOOR AT 9'-0" AFF. UNO. (SEE ELECTRICAL SHEETS)
- 1'-0" x 16'-0" INSULATED OVERHEAD SECTIONAL DRIVE-THRU DOOR. (SEE DOOR AND FRAME SCHEDULE ON SHEET A-400) PROVIDE (4) 6" DIA. BOLLARDS (TYP.)
- 9'-0" x 10'-0" INSULATED OVERHEAD SECTIONAL DOOR DOCK EQUIPMENT. SEE DOCK EQUIPMENT SCHEDULE ON SHEET A-400 FOR DOCK EQUIPMENT. (SEE DOOR AND FRAME SCHEDULE ON SHEET A-400) (SEE DETAILS ON SHEET A-403)
- KNOCK-OUT PANEL FOR FUTURE WINDOW / DOCK DOOR AND LEVELER. SHOWN DASHED. (TYP.)
- DOCK SIGNAGE. (SEE DETAILS ON SHEET A-403)
- AUTOMATIC DOOR OPERATOR AND PEDESTAL. (SEE DOOR SCHEDULE ON SHEET A-400)
- STEEL FRAMED CANOPY. TIE DOWNS INTO UNDERGROUND STORY SYSTEM. SHEET DRAINING WILL NOT BE ACCEPTED. (SEE PLUMBING AND CIVIL SHEETS) (SEE SHEET A-304)
- 2" x 1" BLACK VINYL COATED WOVEN WIRE MESH (10 GA.) SECURITY FENCING. TERMINATE ENCLOSURE AT UNDERSIDE OF CANOPY STRUCTURE. (WIRE CRAFTERS, 1800.636.1846 OR APPROVED EQUAL.)
- 2" x 1" BLACK VINYL COATED WOVEN WIRE MESH (10 GA.) SECURITY GATE WITH EXIT DEVICE. (SEE DOOR AND FRAME SCHEDULE ON SHEET A-400) (WIRE CRAFTERS, 1800.636.1846 OR APPROVED EQUAL.)
- STEEL FRAMED ENTRY CANOPY WITH PREFINISHED COMPOSITE ALUMINUM PANEL FASCIA AND CEILING SYSTEM. (SEE BUILDING SECTIONS)
- FIRE-ENGINEERED SHOKER'S SHELTER. (SEE SHEET A-203)
- STAINLESS STEEL OVERFLOW NOZZLE W/ HINGED PERFORATED COVER. SEE PLUMBING SHEETS FOR SIZE. MOUNT AT 24" ABOVE FINISHED ADJACENT SURFACE. EQUAL TO ZURN MODEL #739-DC. WWW.ZURN.COM 1844.959.9291. (SEE DETAIL F/A-306)
- 40'-0" H. ALUMINUM FLAG POLE WITH CONCRETE BASE. G.C. SHALL PROVIDE GROUND MOUNTED LIGHT FIXTURE AT EACH POLE. (TYP. OF 3) (SEE CIVIL SHEETS) (SEE ELECTRICAL SHEETS)
- NEW HEAVY DUTY UNDER BIKE RACK BY MADRAX. (1800.448.1831) MODEL #41238-15-3F. (TYPICAL OF 2) PREFIN. BLACK. SEE SIDEWALK PLANS FOR LOCATIONS. (SEE CIVIL SHEETS)
- 8'-0" H. DECORATIVE LIGHT POLE AND FIXTURE. (SEE ELECTRICAL DRAWINGS)
- LINE OF ROOF BEYOND.
- THRU-WALL DRAINAGE / OVERFLOW SCUPPER. SIZES VARY. SEE BUILDING ELEVATIONS. (SEE DETAILS E/A-306 AND E/A-307)
- PREFINISHED METAL COPING (24 GA.) OR FASCIA EDGE FLASHING (24 GA.). (SEE DETAIL J/A-304)
- 6" DIA. CONCRETE-FILLED STEEL BOLLARDS AT YELLOW. (TYP.) (SEE DETAIL E/A-153)
- MOTORIZED WALL LOUVER AT FIRE PUMP ROOM. (SEE MECHANICAL & ELECTRICAL SHEETS)
- FIRE ALARM SYSTEM SPEAKER/STROBE DEVICE (SEE FIRE PROTECTION SHEETS)
- SURFACE MOUNTED, HINGED DOOR FIRE DEPARTMENT KNOX BOX w/ TAPPER SWITCH. MOUNT AT 4'-6" ABOVE FINISH GRADE. (KNOX BOX 3200 SERIES)
- COMPACTOR PROVIDED AND INSTALLED BY TENANT. G.C. TO PROVIDE ELECTRICAL CONNECTIONS. G.C. TO PROVIDE ELECTRICAL CONNECTIONS. (SEE ELECTRICAL SHEETS) (SEE DOCK EQUIPMENT SCHEDULE ON SHEET A-400 FOR DOCK EQUIPMENT. (SEE DOOR AND FRAME SCHEDULE ON SHEET A-400)
- POWER COMPANY TRANSFORMER AND CONCRETE PAD. (SEE ELECTRICAL SHEETS)
- EMERGENCY BACK-UP GENERATOR AND CONCRETE PAD. (SEE ELECTRICAL SHEETS)
- GAS METER SET. (SEE PLUMBING SHEETS)
- HOSE BIBB. (SEE PLUMBING SHEETS) PROVIDE FROST PROOF SILLCOCK AT EXTERIOR WALLS. ENSURE ALL PIPING IS WITHIN THE THERMAL ENVELOPE.
- SURFACE MOUNTED WALL LIGHT FIXTURE. CENTER FIXTURE IN PANEL. MOUNT CENTER OF FIXTURE AT 35'-0" AFF. (SEE ELECTRICAL SHEETS)
- 2" RECESSED AREA WITHIN CONCRETE WALL PANEL. (SEE DETAIL A/A-404)
- CONCRETE DOCK PAD TO EXTEND 6'-0" FROM FACE OF BUILDING. (SEE CIVIL ENGINEERING SHEETS FOR THICKNESS AND SLOPES)
- RETURN REVEALS ON ALL EXPOSED SIDES OF PIER.
- AREA OF FUTURE TENANT SIGNAGE.
- 1/4" GALVANIZED STEEL PLATE DOWNSPOUT GUARD. SECURE TO WALL WITH (3) 1/2" DIA. TIE RODS. PAINT. (SEE DETAIL D/A-307)
- COMPACTOR DOOR.
- PREFINISHED METAL (22 GA.) CONDUCTOR BOX AND 8" x 8" PREFINISHED METAL (22 GA.) DOWNSPOUT. (SEE DETAIL E/A-307) CONNECT TO STORY SYSTEM BELOW GRADE. (SEE PLUMBING AND CIVIL SHEETS)
- ROOF MOUNTED MECHANICAL EQUIPMENT, SHOWN DASHED.
- PREFINISHED ALUMINUM CLEARESTORY WINDOW SYSTEM w/ 1" INSULATED GLAZING. (SEE ELEVATIONS ON SHEET A-401)

SHELL BUILDING MATERIAL FINISH KEY

MARK	MANUFACTURER	DESCRIPTION	REMARKS
EXTERIOR PAINT / TEXTURED ACRYLIC COATING (CONCRETE WALL PANELS)			
P-1	SHERWIN WILLIAMS	TEXTURED ACRYLIC COATING MATCH COLOR SW #1646 "FIRST STAR"	EXTERIOR FIELD COLOR EXTERIOR COLOR AT PUMP HOUSE (SEMI-GLOSS PAINT AT METAL)
P-2	SHERWIN WILLIAMS	TEXTURED ACRYLIC COATING MATCH COLOR SW #1016 "MINDFUL GRAY"	EXTERIOR ACCENT COLOR HOLLOW METAL DOORS AND FRAMES (SEMI-GLOSS, LIGHT POLE BASES INSIDE CURBED ISLANDS)
P-3	SHERWIN WILLIAMS	TEXTURED ACRYLIC COATING MATCH COLOR SW #1011 "DORIAN GRAY"	EXTERIOR ACCENT COLOR AT WAREHOUSE EXTERIOR FIELD COLOR AT GUARDHOUSE
P-4	SHERWIN WILLIAMS	TEXTURED ACRYLIC COATING MATCH COLOR SW #1018 "DOVETAIL"	EXTERIOR ACCENT COLOR
P-5	SHERWIN WILLIAMS	TEXTURED ACRYLIC COATING MATCH COLOR SW #14 "MOTH WING"	EXTERIOR ACCENT COLOR EXTERIOR COLOR AT GUARDHOUSE
P-6	SHERWIN WILLIAMS	TEXTURED ACRYLIC COATING MATCH COLOR PANTONE #355C	EXTERIOR ACCENT COLOR
P-7	SHERWIN WILLIAMS	SEMI-GLOSS PAINT (LOW VOC) "SAFETY YELLOW"	STEEL BOLLARDS, CURBS AND LIGHT POLE BASES OUTSIDE CURBED ISLANDS
P-8	SHERWIN WILLIAMS	SEMI-GLOSS PAINT, "BLACK" (OPTIONAL AS VINYL DECAL)	EXTERIOR ACCENT COLOR AT GUARDHOUSE
PREFINISHED METAL			
MTL-1	PAC-CLAD	24 GA. PREFINISHED ALUMINUM COLOR: "GRANITE"	METAL COPING, SCUPPERS, AND DOWNSPOUTS
COMPOSITE METAL PANELS (ENTRY CANOPY)			
CHP-1	ALPOLIC	4" H. UET SYSTEM COLOR - MATCH P-6	PROVIDE DOW CORNING 795 SEALANT AT JOINTS. MATCH P-6
GALVANIZED METAL			
GLV-1	--	GALVANIZED STEEL (NO PAINT)	EXTERIOR METAL RAILINGS, STAIRS AND LANDINGS
STOREFRONT / WINDOW SYSTEM			
SF-1	KAUNER	PREFINISHED ALUMINUM COLOR - DARK BRONZE	STOREFRONT / WINDOW SYSTEM (TYP.)
AIR INTAKE LOUVERS			
LV-1	GREENHECK	PREFINISHED ALUMINUM (MATCH P-1) COLOR - "BONE WHITE", #GF02	BUILDING LOUVERS (TYP) (L1 AND L3 ONLY)
LV-2	GREENHECK	PREFINISHED ALUMINUM (MATCH P-2) COLOR - "SMOKE", #GF04	BUILDING LOUVERS (TYP) (L2 AND L4)

EXTERIOR COLOR LEGEND

P-1	TEXTURED ACRYLIC COATING SHERWIN WILLIAMS MATCH COLOR SW #1646 "FIRST STAR" (RGB 218 - 211 - 212)
P-2	TEXTURED ACRYLIC COATING SHERWIN WILLIAMS MATCH COLOR SW #1016 "MINDFUL GRAY" (RGB 188 - 183 - 173)
P-3	TEXTURED ACRYLIC COATING SHERWIN WILLIAMS MATCH COLOR SW #1011 "DORIAN GRAY" (RGB 172 - 161 - 158)
P-4	TEXTURED ACRYLIC COATING SHERWIN WILLIAMS MATCH COLOR SW #1018 "DOVETAIL" (RGB 144 - 138 - 131)
P-5	TEXTURED ACRYLIC COATING SHERWIN WILLIAMS MATCH COLOR SW #14 "MOTH WING" (RGB 160 - 144 - 127)
P-6	TEXTURED ACRYLIC COATING SHERWIN WILLIAMS ACCENT COLOR - PANTONE COLOR #355C (CMYK 83 - 1 - 0 - 0)

SHELL BUILDING FINISH NOTES

- SEE SPECIFICATIONS FOR EXTERIOR TEXTURED ACRYLIC COATING. COLORS TO MATCH SHERWIN WILLIAMS PAINT COLORS AS INDICATED IN SHELL BUILDING MATERIAL FINISH KEY.
- PAINT EXTERIOR HOLLOW METAL DOORS & FRAMES SEMI-GLOSS, COLOR TO MATCH P-2.
- PAINT CONCRETE FILLED STEEL BOLLARDS SEMI-GLOSS P-1 "SAFETY YELLOW".
- EXTERIOR CONCRETE WALL PANEL CONTROL JOINTS TO BE SEALED WITH SONNEBORN NP-21 OR APPROVED EQUAL.
- PROVIDE 1-HR. RATED CONCRETE WALL PANEL JOINTS AT VERTICAL EXIT ENCLOSURES, (STAIRS). CONTROL JOINTS TO BE SEALED WITH SONNEBORN NP-21 OR APPROVED EQUAL.

SYMBOL LEGEND

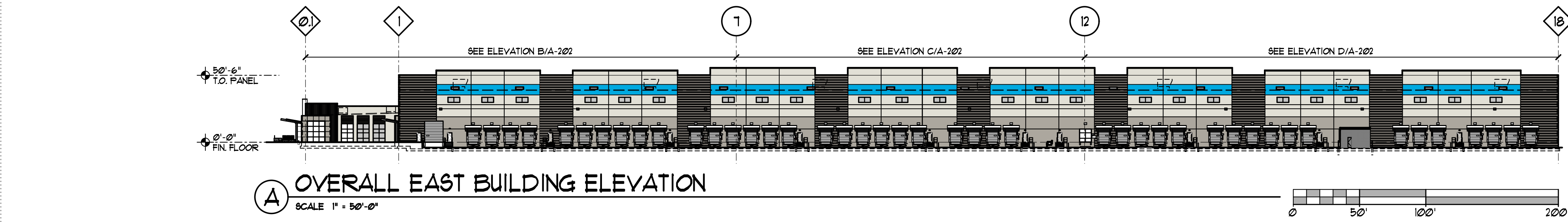
22	SHELL BUILDING ELEVATION CODED NOTE TAG (SEE SHEET A-203 AND A-204 FOR SCHEDULE)
DOOR NUMBER TAG	(SEE SHEET A-400 FOR DOOR SCHEDULE)
DOCK/COMPACTOR DOOR NUMBER TAG	(SEE SHEET A-400 FOR DOOR SCHEDULE)
X (A-40)	STOREFRONT SYSTEM TAG (SEE SHEET A-400 FOR UNIT ELEVATIONS)
	MATERIAL / FINISH TAG (SEE SHEET A-203 AND A-204 FOR MATERIAL FINISH KEY)
	BUILDING EXPANSION JOINT (SEE DETAIL A/A-404)

EXTERIOR MATERIAL LEGEND

EAST ELEVATION	
TOTAL WALL AREA =	53,396 SF
CONCRETE WALL PANELS W/ TEXTURED PAINT =	30,611 SF 58 %
CONCRETE WALL PANELS W/ FORMLINERS & REVEAL =	19,788 SF 38 %
ARCHITECTURAL METALS =	1,716 SF 3 %
METAL DOORS	811 SF 1 %
	4,449 SF 8 %

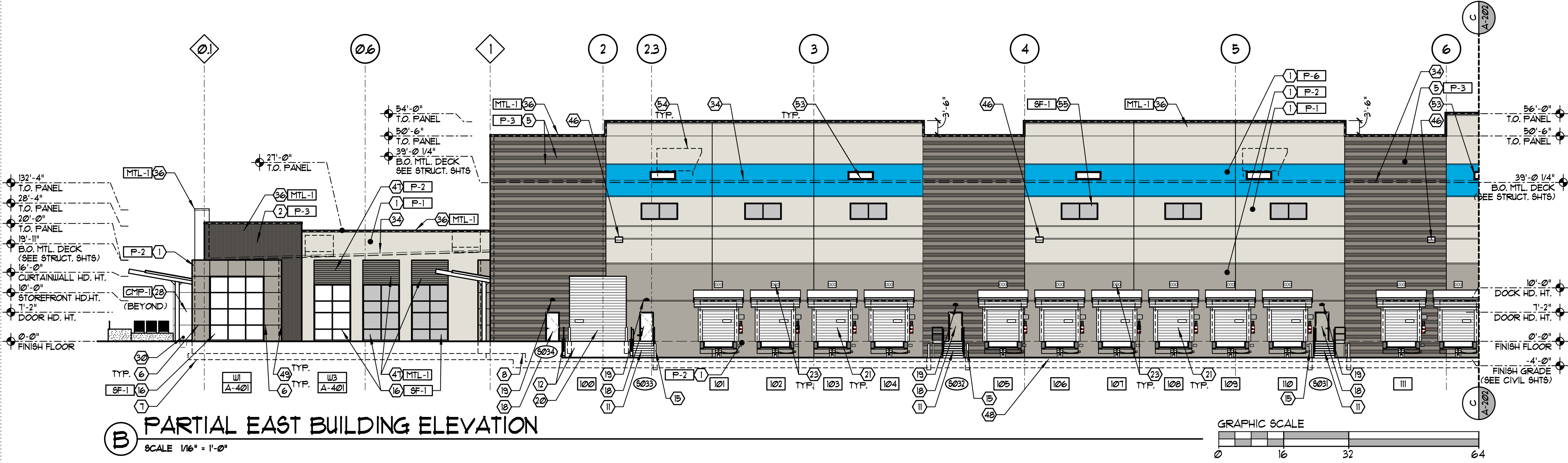
OVERALL EAST BUILDING ELEVATION

SCALE 1" = 50'-0"



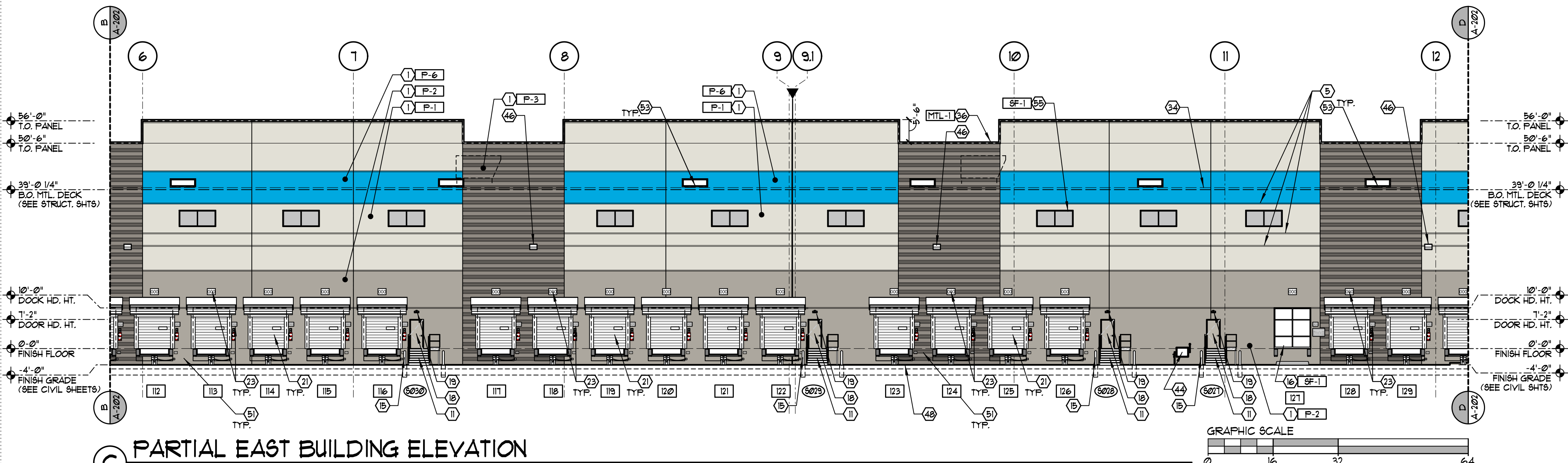
PARTIAL EAST BUILDING ELEVATION

SCALE 1/16" = 1'-0"



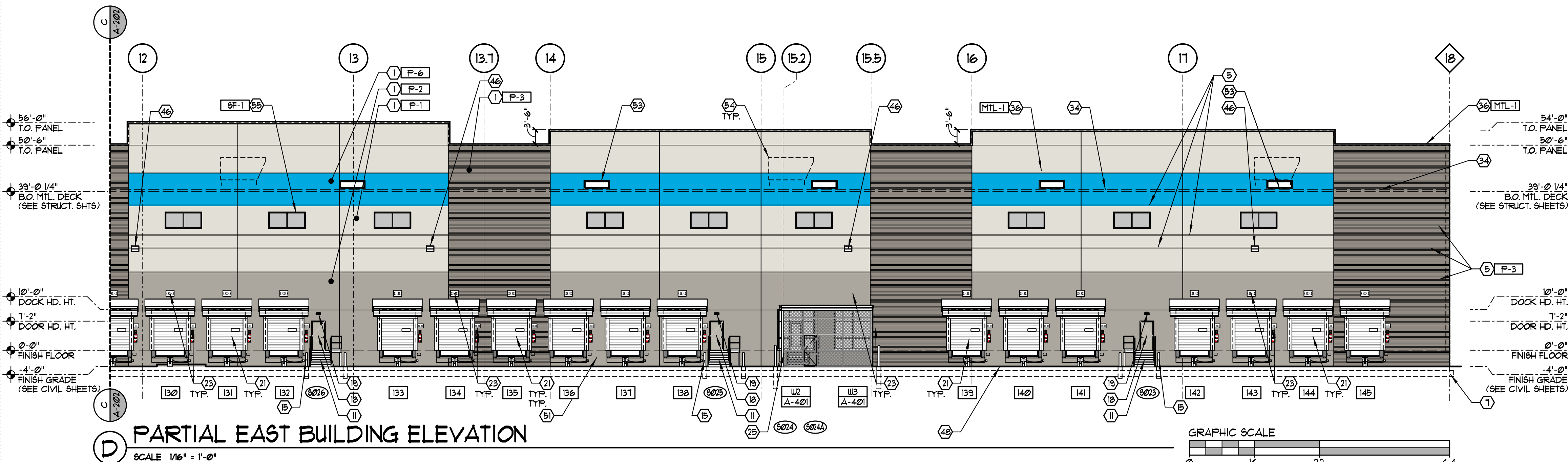
PARTIAL EAST BUILDING ELEVATION

SCALE 1/16" = 1'-0"



PARTIAL EAST BUILDING ELEVATION

SCALE 1/16" = 1'-0"





ISSUE	REVISION	DATE
DESIGN REVIEW		SEPT. 07, 2021

BUILDING ELEVATION CODED NOTES

- CONCRETE WALL PANELS WITH REVEALS AND TEXTURED PAINT COATING. PAINT EXPOSED INTERIOR FACE OF CONCRETE WALL PANELS. (P-6)
- CONCRETE WALL PANELS WITH 1/2" WIDE PLANK, RANDOM DEPTH PATTERN, FITZGERALD FORMLINERS, PATTERN #6021. WWW.FORMLINERS.COM 1800.541.1160
- PANEL JOINT WITH SEALANT. (TYP.) (SEE DETAILS F-4 U/A-404)
- BUILDING EXPANSION JOINT. (SEE DETAIL A/A-404 AND STRUCTURAL SHEETS)
- 3" WIDE X 1/2" DEEP REVEAL. (SEE DETAIL T U/A-404)
- 1" WIDE X 1/2" DEEP REVEAL
- LINE OF CONCRETE FOOTING. (SEE STRUCTURAL SHEETS)
- STEP IN C.I.P. CONCRETE FOOTING. (SEE STRUCTURAL SHEETS)
- 4" THICK (MIN) CONCRETE SIDEWALK ON COMPACTED GRANULAR BASE. SLOPE 1/4" PER FOOT (2%) AWAY FROM BUILDING. CONCRETE TO BE STANDARD GRAY CONCRETE WITH LIGHT BROOKY FINISH UNLESS NOTED OTHERWISE. (SEE CIVIL SHEETS)
- 5'-0" X 6'-0" X 4" DEEP CONCRETE STOOP, SLOPE 2% MAX. AWAY FROM BUILDING. (SEE DETAIL K/A-153)
- CONCRETE STAIRS WITH 1 1/2" DIA. GUARDRAIL AND 1/4" DIA. HANDRAIL. (GLV-1)
- CONCRETE RAMP, RETAINING WALLS, AND STAIRS WITH PAINTED METAL GUARDRAIL AT DRIVE-THRU OVERHEAD DOORS. (SEE STRUCTURAL SHEETS) (SEE SECTIONS ON SHEET A-503)
- 2" DIA. GALVANIZED METAL GUARDRAIL AT 42" AFF. WITH INTERFERED LATE RAIL AT 37" AFF. AND POSTS AT 6'-0" O.C. MAX. (SEE DETAILS ON SHEET A-204)
- EXTERIOR GALVANIZED METAL STAIR WITH 1 1/2" DIA. GUARDRAIL AND 1/4" DIA. HANDRAIL. PROVIDE (2) 6" DIA. BOLLARDS. (SEE DETAILS ON SHEET A-204)
- 6" DIA. GALV. CONCRETE-FILLED STEEL BOLLARD. PROVIDE REPLACEABLE YELLOW SLEEVE. (SEE DETAIL C/A-153)
- PREFINISHED ALUMINUM WINDOW SYSTEM WITH 1" INSULATED GLAZING. (SEE ELEVATIONS ON SHEET A-401)
- 3'-0" X 7'-0" WIDE STEEL ALUMINUM STOREFRONT ENTRANCE DOORS WITH 1" INSULATED TEMPERED CLEAR GLASS. (SEE DOOR AND FRAME SCHEDULE) ON SHEET A-400 (SF-1)
- INSULATED HOLLOW METAL SERVICE DOOR AND FRAME. PAINT SEMI-GLOSS. GROUT FRAME SOLID. (SEE DOOR AND FRAME SCHEDULE) ON SHEET A-400
- EMERGENCY EGRESS LIGHT FIXTURE. CENTER ABOVE DOOR AT 9'-0" AFF. UNO. (SEE ELECTRICAL SHEETS)
- 9'-0" X 10'-0" INSULATED OVERHEAD SECTIONAL DOOR DOCK EQUIPMENT. SEE DOCK EQUIPMENT SCHEDULE ON SHEET A-400 FOR DOCK EQUIPMENT. (SEE DOOR AND FRAME SCHEDULE) ON SHEET A-400. SEE DETAILS ON SHEET A-403
- KNOCK-OUT PANEL FOR FUTURE WINDOW / DOCK DOOR AND LEVELER. SHOW DASHED. (TYP.)
- DOCK SIGNAGE. (SEE DETAILS ON SHEET A-403)
- AUTOMATIC DOOR OPERATOR AND PEDESTAL. (SEE DOOR SCHEDULE ON SHEET A-400)
- STEEL FRAMED CANOPY. TIE DOWNS INTO UNDERGROUND STORY SYSTEM. SHEET DRAINING WILL NOT BE ACCEPTED. (SEE PLUMBING AND CIVIL SHEETS) (SEE SHEET A-504)
- 2" X 1" BLACK VINYL COATED WOVEN WIRE MESH (10 GA.) SECURITY FENCING. TERMINATE ENCLOSURE AT UNDERSIDE OF CANOPY STRUCTURE. (WIRE CRAFTERS, 1800.676.1816 OR APPROVED EQUAL)
- 2" X 1" BLACK VINYL COATED WOVEN WIRE MESH (10 GA.) SECURITY GATE WITH EXIT DEVICE. (SEE DOOR AND FRAME SCHEDULE ON SHEET A-400) (WIRE CRAFTERS, 1800.676.1816 OR APPROVED EQUAL)
- STEEL FRAMED ENTRY CANOPY WITH PREFINISHED COMPOSITE ALUMINUM PANEL FASCIA AND CEILING SYSTEM. (SEE BUILDING SECTIONS)
- FIRE-ENGINEERED SHOKER'S SHELTER. (SEE SHEET A-203)
- STAINLESS STEEL OVERFLOW NOZZLE W/ HINGED PERFORATED COVER. SEE PLUMBING SHEETS FOR SIZE. MOUNT AT 24" ABOVE FINISHED ADJACENT SURFACE. EQUAL TO ZURN MODEL #793-DC. WWW.ZURN.COM 184.455.0521. (SEE DETAIL F/A-306)
- 40'-0" H. ALUMINUM FLAG POLE WITH CONCRETE BASE. G.C. SHALL PROVIDE GROUND MOUNTED LIGHT FIXTURE AT EACH POLE. (TYP. OF 3) (SEE CIVIL SHEETS) (SEE ELECTRICAL SHEETS)
- NEW HEAVY DUTY UNDER BIKE RACK BY MADRAX. (1800.448.1931) MODEL #4038-15-SF. (TYPICAL OF 2) PREFIN. BLACK. SEE SIDEWALK PLANS FOR LOCATIONS. (SEE CIVIL SHEETS)
- 8'-0" H. DECORATIVE LIGHT POLE AND FIXTURE. (SEE ELECTRICAL DRAWINGS)
- LINE OF ROOF BEYOND.
- THRU-WALL DRAINAGE / OVERFLOW SCUPPER. SIZES VARY. SEE BUILDING ELEVATIONS. (SEE DETAILS E/A-306 AND B/A-307)
- PREFINISHED METAL COPING (24 GA.) OR FASCIA EDGE FLASHING (24 GA.). (SEE DETAIL J/A-304)
- 6" DIA. CONCRETE-FILLED STEEL BOLLARDS AT GENERATORS AND TRANSFORMERS. PAINT SAFETY YELLOW. (TYP.) (SEE DETAIL E/A-153)
- MOTORIZED WALL LOUVER AT FIRE PUMP ROOM. (SEE MECHANICAL & ELECTRICAL SHEETS)
- FIRE ALARM SYSTEM SPEAKER/STROBE DEVICE (SEE FIRE PROTECTION SHEETS)
- SURFACE MOUNTED, HINGED DOOR FIRE DEPARTMENT KNOX BOX w/ TAPPER SWITCH. MOUNT AT 4'-6" ABOVE FINISH GRADE. (KNOX-BOX 3200 SERIES)
- COMPACTOR PROVIDED AND INSTALLED BY TENANT. G.C. TO PROVIDE ELECTRICAL CONNECTIONS. G.C. TO PROVIDE ELECTRICAL CONNECTIONS. (SEE ELECTRICAL SHEETS) (SEE DOCK EQUIPMENT SCHEDULE) ON SHEET A-401 FOR DOCK EQUIPMENT. (SEE DOOR AND FRAME SCHEDULE) ON SHEET A-400
- POWER COMPANY TRANSFORMER AND CONCRETE PAD. (SEE ELECTRICAL SHEETS)
- EMERGENCY BACK-UP GENERATOR AND CONCRETE PAD. (SEE ELECTRICAL SHEETS)
- GAS METER SET. (SEE PLUMBING SHEETS)
- HOSE BIBB. (SEE PLUMBING SHEETS) PROVIDE FROST PROOF SILLCOCK AT EXTERIOR WALLS. ENSURE ALL PIPING IS WITHIN THE THERMAL ENVELOPE.
- SURFACE MOUNTED WALL PACK LIGHT FIXTURE. CENTER FIXTURE IN PANEL. MOUNT CENTER OF FIXTURE AT 35'-0" AFF. (SEE ELECTRICAL SHEETS)
- 2" RECESSED AREA WITHIN CONCRETE WALL PANEL. (SEE DETAIL J/A-404)
- CONCRETE DOCK PAD TO EXTEND 60'-0" FROM FACE OF BUILDING. (SEE CIVIL ENGINEERING SHEETS FOR THICKNESS AND SLOPES)
- RETURN REVEALS ON ALL EXPOSED SIDES OF PIER.
- AREA OF FUTURE TENANT SIGNAGE.
- 1/4" GALVANIZED STEEL PLATE DOWNSPOUT GUARD. SECURE TO WALL WITH (3) 1/2" DIA. EXPANSION ANCHORS. PAINT. (SEE DETAIL D/A-307)
- COMPACTOR DOOR.
- PREFINISHED METAL (22 GA.) CONDUCTOR BOX AND 8' X 8' PREFINISHED METAL (22 GA.) DOWNSPOUT. (SEE DETAIL B/A-307) CONNECT TO STORY SYSTEM BELOW GRADE. (SEE PLUMBING AND CIVIL SHEETS)
- ROOF MOUNTED MECHANICAL EQUIPMENT, SHOWN DASHED.
- PREFINISHED ALUMINUM CLEARESTORY WINDOW SYSTEM w/ 1" INSULATED GLAZING. (SEE ELEVATIONS ON SHEET A-401)

SHELL BUILDING MATERIAL FINISH KEY

MARK	MANUFACTURER	DESCRIPTION	REMARKS
EXTERIOR PAINT / TEXTURED ACRYLIC COATING (CONCRETE WALL PANELS)			
P-1	SHERWIN WILLIAMS	TEXTURED ACRYLIC COATING MATCH COLOR SW #1646 "FIRST STAR"	EXTERIOR FIELD COLOR EXTERIOR COLOR AT PUMP HOUSE (SEE ELEVATIONS PAINT AT METAL)
P-2	SHERWIN WILLIAMS	TEXTURED ACRYLIC COATING MATCH COLOR SW #1016 "MINDFUL GRAY"	EXTERIOR ACCENT COLOR HOLLOW METAL DOORS AND FRAMES (SEMI-GLOSS, LIGHT POLE BASES INSIDE CURBED ISLANDS)
P-3	SHERWIN WILLIAMS	TEXTURED ACRYLIC COATING MATCH COLOR SW #1011 "DORIAN GRAY"	EXTERIOR ACCENT COLOR AT WAREHOUSE EXTERIOR FIELD COLOR AT GUARDHOUSE
P-4	SHERWIN WILLIAMS	TEXTURED ACRYLIC COATING MATCH COLOR SW #1018 "DOVETAIL"	EXTERIOR ACCENT COLOR
P-5	SHERWIN WILLIAMS	TEXTURED ACRYLIC COATING MATCH COLOR SW #14 "MOTH WING"	EXTERIOR ACCENT COLOR AT GUARDHOUSE
P-6	SHERWIN WILLIAMS	TEXTURED ACRYLIC COATING MATCH COLOR PANTONE #355C	EXTERIOR ACCENT COLOR
P-7	SHERWIN WILLIAMS	SEMI-GLOSS PAINT (LOW VOC) "SAFETY YELLOW"	STEEL BOLLARDS, CURBS AND LIGHT POLE BASES OUTSIDE CURBED ISLANDS
P-8	SHERWIN WILLIAMS	SEMI-GLOSS PAINT, "BLACK" (OPTIONAL AS VINYL DECAL)	EXTERIOR ACCENT COLOR AT GUARDHOUSE
PREFINISHED METAL			
MTL-1	PAC-GLAD	24 GA. PREFINISHED ALUMINUM COLOR: "GRANITE"	METAL COPING, SCUPPERS, AND DOWNSPOUTS
COMPOSITE METAL PANELS (ENTRY CANOPY)			
CHP-1	ALPOLIC	4" H-100 SYSTEM COLOR - MATCH P-6	PROVIDE DOWN CORNING 785 SEALANT AT JOINTS. MATCH P-6
GALVANIZED METAL			
GLV-1	--	GALVANIZED STEEL (NO PAINT)	EXTERIOR METAL RAILINGS, STAIRS AND LANDINGS
STOREFRONT / WINDOW SYSTEM			
SF-1	KALNEER	PREFINISHED ALUMINUM COLOR - DARK BRONZE	STOREFRONT / WINDOW SYSTEM (TYP.)
AIR INTAKE LOUVERS			
LV-1	GREENHECK	PREFINISHED ALUMINUM (MATCH P-1) COLOR - "BONE WHITE", #GF02	BUILDING LOUVERS (TYP.) (L1 AND L3 ONLY)
LV-2	GREENHECK	PREFINISHED ALUMINUM (MATCH P-2) COLOR - "SMOKE", #GF04	BUILDING LOUVERS (TYP.) (L2 AND L4)

EXTERIOR COLOR LEGEND

P-1	TEXTURED ACRYLIC COATING SHERWIN WILLIAMS MATCH COLOR SW #1646 "FIRST STAR" (RGB 218 - 217 - 212)
P-2	TEXTURED ACRYLIC COATING SHERWIN WILLIAMS MATCH COLOR SW #1016 "MINDFUL GRAY" (RGB 188 - 183 - 173)
P-3	TEXTURED ACRYLIC COATING SHERWIN WILLIAMS MATCH COLOR SW #1011 "DORIAN GRAY" (RGB 172 - 167 - 158)
P-4	TEXTURED ACRYLIC COATING SHERWIN WILLIAMS MATCH COLOR SW #1018 "DOVETAIL" (RGB 144 - 138 - 131)
P-5	TEXTURED ACRYLIC COATING SHERWIN WILLIAMS MATCH COLOR SW #14 "MOTH WING" (RGB 160 - 144 - 127)
P-6	TEXTURED ACRYLIC COATING SHERWIN WILLIAMS ACCENT COLOR - PANTONE COLOR #355C (CMYK 83 - 1 - 0 - 0)

SHELL BUILDING FINISH NOTES

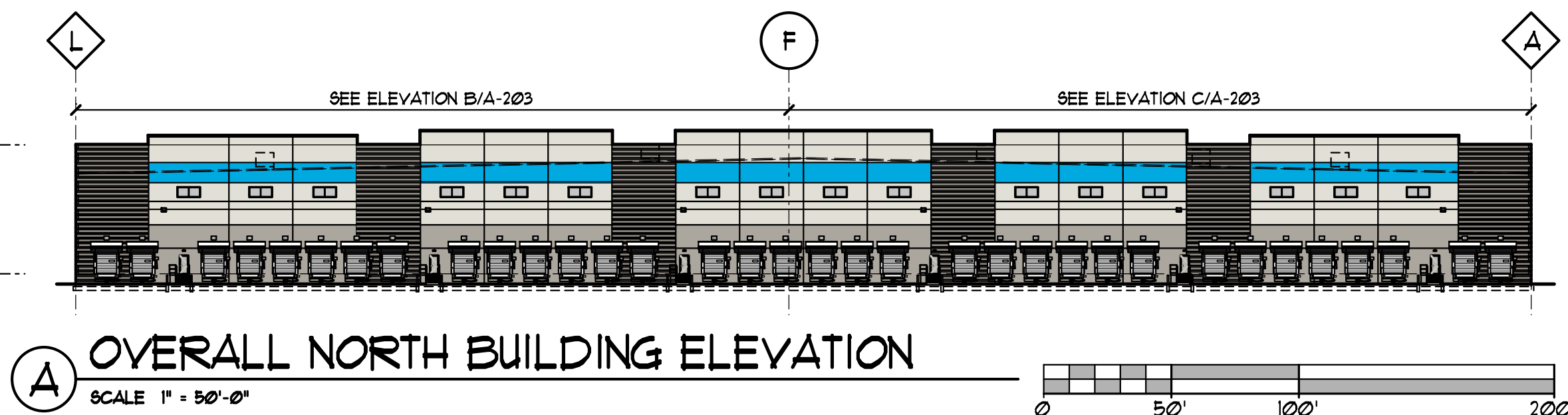
- SEE SPECIFICATIONS FOR EXTERIOR TEXTURED ACRYLIC COATING. COLORS TO MATCH SHERWIN WILLIAMS PAINT COLORS AS INDICATED IN SHELL BUILDING MATERIAL FINISH KEY.
- PAINT EXTERIOR HOLLOW METAL DOORS & FRAMES SEMI-GLOSS, COLOR TO MATCH P-2.
- PAINT CONCRETE FILLED STEEL BOLLARDS SEMI-GLOSS P-1 "SAFETY YELLOW".
- EXTERIOR CONCRETE WALL PANEL JOINTS TO BE SEALED WITH SONNEBORN NP-2" OR APPROVED EQUAL.
- PROVIDE 1-HR. RATED CONCRETE WALL PANEL JOINTS AT VERTICAL EXIT ENCLOSURES, (STAIRS) CONTROL JOINTS TO BE SEALED WITH SONNEBORN NP-2" OR APPROVED EQUAL.

SYMBOL LEGEND

EN	SHELL BUILDING ELEVATION CODED NOTE TAG (SEE SHEET A-203 AND A-204 FOR SCHEDULE)
DN	DOOR NUMBER TAG (SEE SHEET A-400 FOR DOOR SCHEDULE)
DC	DOCK/COMPACTOR DOOR NUMBER TAG (SEE SHEET A-400 FOR DOOR SCHEDULE)
X (A-40)	STOREFRONT SYSTEM TAG (SEE SHEET A-401 FOR UNIT ELEVATIONS)
	MATERIAL / FINISH TAG (SEE SHEET A-203 AND A-204 FOR MATERIAL FINISH KEY)
	BUILDING EXPANSION JOINT (SEE DETAIL A/A-404)

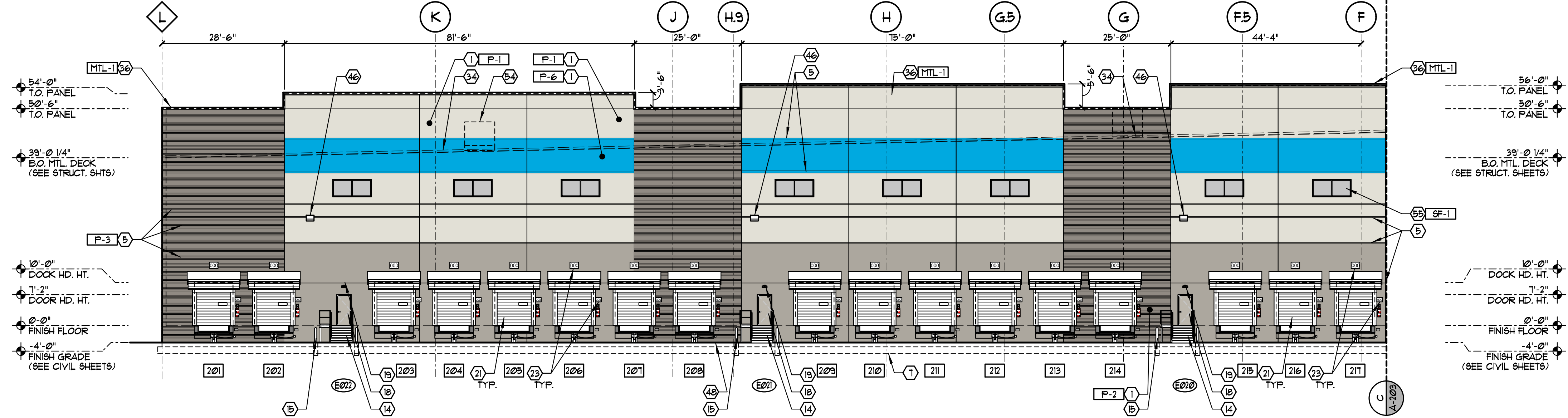
EXTERIOR MATERIAL LEGEND

NORTH ELEVATION	
TOTAL WALL AREA =	33,422 SF
CONCRETE WALL PANELS W/ TEXTURED PAINT =	20,860 SF 62 %
CONCRETE WALL PANELS W/ FORMLINERS & REVEAL =	8,536 SF 25 %
ARCHITECTURAL METALS =	746 SF 2 %
GLAZING =	576 SF 10 %
METAL DOORS =	3,204 SF 10 %



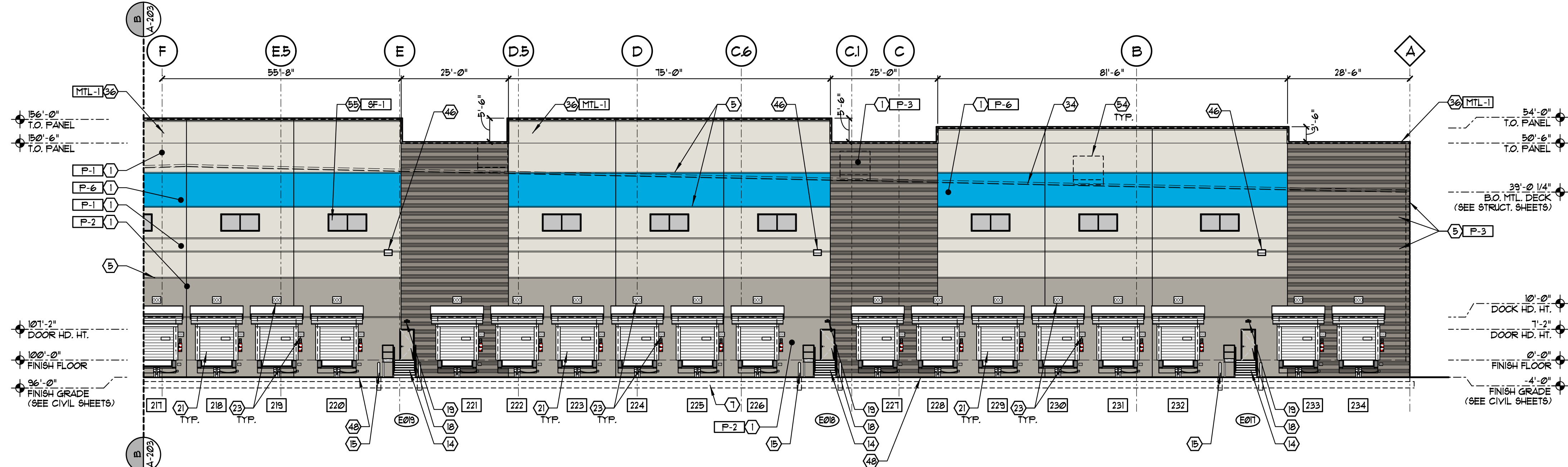
OVERALL NORTH BUILDING ELEVATION

SCALE 1" = 50'-0"



PARTIAL NORTH BUILDING ELEVATION

SCALE 1/8" = 1'-0"



PARTIAL NORTH BUILDING ELEVATION

SCALE 1/8" = 1'-0"

BUILDING ELEVATION CODED NOTES

- 1 CONCRETE WALL PANELS WITH REVEALS AND TEXTURED PAINT COATING. PAINT EXPOSED INTERIOR FACE OF CONCRETE WALL PANELS. (SEE SHEET A-400 FOR SCHEDULE) ON SHEET A-400 FOR DOOR EQUIPMENT. (SEE DOOR AND FRAME SCHEDULE) ON SHEET A-400. SEE DETAILS ON SHEET A-400.
- 2 CONCRETE WALL PANELS WITH 1/2" WIDE PLANK, RANDOM DEPTH PATTERN, FITZGERALD FORMLINERS, PATTERN #6021. (SEE SHEET A-400 FOR SCHEDULE) ON SHEET A-400 FOR DOOR EQUIPMENT. (SEE DOOR AND FRAME SCHEDULE) ON SHEET A-400. SEE DETAILS ON SHEET A-400.
- 3 PANEL JOINT WITH SEALANT. (TYP.) (SEE DETAILS F & I/A-404)
- 4 BUILDING EXPANSION JOINT. (SEE DETAIL A/A-404 AND STRUCTURAL SHEETS)
- 5 3" WIDE x 1/2" DEEP REVEAL. (SEE DETAIL T & U/A-404)
- 6 1" WIDE x 1/2" DEEP REVEAL
- 7 LINE OF CONCRETE FOOTING. (SEE STRUCTURAL SHEETS)
- 8 STEP IN C.I.P. CONCRETE FOOTING. (SEE STRUCTURAL SHEETS)
- 9 4" THICK (MIN) CONCRETE SIDEWALK ON COMPACTED GRANULAR BASE. SLOPE 1/4" PER FOOT (2%) AWAY FROM BUILDING. CONCRETE TO BE STANDARD GRAY CONCRETE WITH LIGHT BROOKLYN FINISH UNLESS NOTED OTHERWISE. (SEE CIVIL SHEETS)
- 10 5'-0" x 6'-0" x 4" DEEP CONCRETE STOOP, SLOPE 2% MAX. AWAY FROM BUILDING. (SEE DETAIL K/A-153)
- 11 CONCRETE STAIRS WITH 1/2" DIA. GUARDRAIL AND 1/4" DIA. HANDRAIL. (GLV-1)
- 12 CONCRETE RAMP, RETAINING WALLS, AND STAIRS WITH PAINTED METAL GUARDRAIL AT DRIVE-THRU OVERHEAD DOORS. (SEE STRUCTURAL SHEETS) (SEE SECTIONS ON SHEET A-503)
- 13 2" DIA. GALVANIZED METAL GUARDRAIL AT 42" AFF. WITH INTERFERED RAIL AT 37" AFF. AND POSTS AT 6'-0" O.C. MAX. (SEE DETAILS ON SHEET A-204)
- 14 EXTERIOR GALVANIZED METAL STAIR WITH 1/2" DIA. GUARDRAIL AND 1/4" DIA. HANDRAIL. PROVIDE (2) 6" DIA. BOLLARDS. (SEE DETAILS ON SHEET A-204)
- 15 6" DIA. GALV. CONCRETE-FILLED STEEL BOLLARD, PROVIDE REPLACEABLE YELLOW SLEEVE. (SEE DETAIL C/A-153)
- 16 PREFINISHED ALUMINUM WINDOW SYSTEM WITH 1" INSULATED GLAZING. (SEE ELEVATIONS ON SHEET A-401)
- 17 3'-0" x 7'-0" WIDE STYLE ALUMINUM STOREFRONT ENTRANCE DOORS WITH 1" INSULATED TEMPERED CLEAR GLASS. (SEE DOOR AND FRAME SCHEDULE) ON SHEET A-400 (SF-1)
- 18 INSULATED HOLLOW METAL SERVICE DOOR AND FRAME, PAINT SEMI-GLOSS, GROUT FRAME SOLID. (SEE DOOR AND FRAME SCHEDULE) ON SHEET A-400
- 19 EMERGENCY EGRESS LIGHT FIXTURE, CENTER ABOVE DOOR AT 9'-0" AFF. UNO. (SEE ELECTRICAL SHEETS)
- 20 14'-0" x 16'-0" INSULATED OVERHEAD SECTIONAL DRIVE-THRU DOOR. (SEE DOOR AND FRAME SCHEDULE) ON SHEET A-400. PROVIDE (4) 6" DIA. BOLLARDS (TYP.)
- 21 9'-0" x 10'-0" INSULATED OVERHEAD SECTIONAL DOOR EQUIPMENT. SEE DOOR EQUIPMENT SCHEDULE (TYP.)
- 22 KNOCK-OUT PANEL FOR FUTURE WINDOW / DOOR AND LEVELER. SHOW DASHED. (TYP.)
- 23 DOCK SIGNAGE. (SEE DETAILS ON SHEET A-403)
- 24 AUTOMATIC DOOR OPERATOR AND PEDESTAL. (SEE DOOR SCHEDULE ON SHEET A-400)
- 25 STEEL FRAMED CANOPY, TIE DOWNS INTO UNDERGROUND STORY SYSTEM. SHEET DRAINING WILL NOT BE ACCEPTED. (SEE PLUMBING AND CIVIL SHEETS) (SEE SHEET A-304)
- 26 2" x 1" BLACK VINYL COATED WOVEN WIRE MESH (10 GA.) SECURITY FENCING. TERMINATE ENCLOSURE AT UNDERDOOR CANOPY STRUCTURE. (WIRE CRAFTERS, 1800.636.1846 OR APPROVED EQUAL.)
- 27 2" x 1" BLACK VINYL COATED WOVEN WIRE MESH (10 GA.) SECURITY FENCING. TERMINATE ENCLOSURE AT UNDERDOOR CANOPY STRUCTURE. (WIRE CRAFTERS, 1800.636.1846 OR APPROVED EQUAL.)
- 28 STEEL FRAMED ENTRY CANOPY WITH PREFINISHED COMPOSITE ALUMINUM PANEL FASCIA AND CEILING SYSTEM. (SEE BUILDING SECTIONS)
- 29 FIRE-ENGINEERED SHOCKER'S SHELTER. (SEE SHEET A-203)
- 30 STAINLESS STEEL OVERFLOW NOZZLE W/ HINGED PERFORATED COVER. (SEE PLUMBING SHEETS FOR SIZE. MOUNT AT 24" ABOVE FINISHED ADJACENT SURFACE. EQUAL TO TURN MODEL #293-DC. WWW.ZURN.COM 1844.959.9291. (SEE DETAIL F/A-306)
- 31 48"-Ø H. ALUMINUM FLAG POLE WITH CONCRETE BASE. GLC SHALL PROVIDE GROUND MOUNTED LIGHT FIXTURE AT EACH POLE. (TYP. OF 3) (SEE CIVIL SHEETS) (SEE ELECTRICAL SHEETS)
- 32 NEW HEAVY DUTY UNDER BIKE RACK BY MADRAX. (1800.448.1831) MODEL #4133-15-3P. (TYPICAL OF 2) PREFIN. BLACK. SEE SIDEWALK PLANS FOR LOCATIONS. (SEE CIVIL SHEETS)
- 33 8'-0" H. DECORATIVE LIGHT POLE AND FIXTURE. (SEE ELECTRICAL DRAWINGS)
- 34 THRU-WALL DRAINAGE / OVERFLOW SCUPPER, SIZES VARY. SEE BUILDING ELEVATIONS. (SEE DETAILS E/A-306 AND E/A-307)
- 35 PREFINISHED METAL COPING (24 GA.) OR FASCIA EDGE FLASHING (24 GA.). (SEE DETAIL E/A-304)
- 36 6" DIA. CONCRETE-FILLED STEEL BOLLARDS AT GENERAL ENTRANCE AND TRANSFORMERS. PAINT "SAFETY YELLOW." (TYP.) (SEE DETAIL E/A-153)
- 37 9'-0" x 10'-0" INSULATED OVERHEAD SECTIONAL DOOR EQUIPMENT. SEE DOOR EQUIPMENT SCHEDULE (TYP.)
- 38 MOTORIZED WALL LOUVER AT FIRE PUMP ROOM. (SEE MECHANICAL & ELECTRICAL SHEETS)
- 39 FIRE ALARM SYSTEM SPEAKER/STROBE DEVICE (SEE FIRE PROTECTION SHEETS)
- 40 SURFACE MOUNTED, HINGED DOOR FIRE DEPARTMENT KNOX BOX w/ TAPPER SWITCH. MOUNT AT 4'-6" ABOVE FINISH GRADE. (KNOX-BOX 3200 SERIES)
- 41 COMPACTOR PROVIDED AND INSTALLED BY TENANT. G.C. TO PROVIDE ELECTRICAL CONNECTIONS. G.C. TO PROVIDE ELECTRICAL CONNECTIONS. (SEE ELECTRICAL SHEETS) (SEE DOOR EQUIPMENT SCHEDULE) ON SHEET A-400 FOR DOOR EQUIPMENT. (SEE DOOR AND FRAME SCHEDULE) ON SHEET A-400.
- 42 POWER COMPANY TRANSFORMER AND CONCRETE PAD. (SEE ELECTRICAL SHEETS)
- 43 EMERGENCY BACK-UP GENERATOR AND CONCRETE PAD. (SEE ELECTRICAL SHEETS)
- 44 GAS METER SET. (SEE PLUMBING SHEETS)
- 45 HOSE BIBB. (SEE PLUMBING SHEETS) PROVIDE FROST PROOF SILLCOCK AT EXTERIOR WALLS. ENSURE ALL PIPING IS WITHIN THE THERMAL ENVELOPE.
- 46 SURFACE MOUNTED WALL PACK LIGHT FIXTURE, CENTER FIXTURE IN PANEL. MOUNT CENTER OF FIXTURE AT 35'-0" AFF. (SEE ELECTRICAL SHEETS)
- 47 2" RECESSED AREA WITHIN CONCRETE WALL PANEL. (SEE BUILDING SECTIONS)
- 48 CONCRETE DOOR PAD TO EXTEND 60"-Ø FROM FACE OF BUILDING. (SEE CIVIL ENGINEERING SHEETS FOR THICKNESS AND SLOPES)
- 49 RETURN REVEALS ON ALL EXPOSED SIDES OF PIER.
- 50 AREA OF FUTURE TENANT SIGNAGE.
- 51 1/4" GALVANIZED STEEL PLATE DOWNSPOUT GUARD, SECURE TO WALL WITH (3) 1/2" DIA. ANCHORS. PAINT. (SEE DETAIL D/A-307)
- 52 COMPACTOR DOOR.
- 53 PREFINISHED METAL (22 GA.) CONDUCTOR BOX AND 8" x 8" PREFINISHED METAL (22 GA.) DOWNSPOUT. (SEE DETAIL E/A-307) CONNECT TO STORY SYSTEM BELOW GRADE. (SEE PLUMBING AND CIVIL SHEETS)
- 54 ROOF MOUNTED MECHANICAL EQUIPMENT, SHOWN DASHED.
- 55 PREFINISHED ALUMINUM CLEARESTORY WINDOW SYSTEM w/ 1" INSULATED GLAZING. (SEE ELEVATIONS ON SHEET A-401)

SHELL BUILDING MATERIAL FINISH KEY

MARK	MANUFACTURER	DESCRIPTION	REMARKS
EXTERIOR PAINT / TEXTURED ACRYLIC COATING (CONCRETE WALL PANELS)			
P-1	SHERWIN WILLIAMS	TEXTURED ACRYLIC COATING MATCH COLOR SW #1646 "FIRST STAR"	EXTERIOR FIELD COLOR EXTERIOR COLOR AT PUMP HOUSE (SEMI-GLOSS PAINT AT METAL)
P-2	SHERWIN WILLIAMS	TEXTURED ACRYLIC COATING MATCH COLOR SW #1016 "MINDFUL GRAY"	EXTERIOR ACCENT COLOR HOLLOW METAL DOORS AND FRAMES (SEMI-GLOSS, LIGHT POLE BASES INSIDE CURBED ISLANDS)
P-3	SHERWIN WILLIAMS	TEXTURED ACRYLIC COATING MATCH COLOR SW #1011 "DORIAN GRAY"	EXTERIOR ACCENT COLOR AT WAREHOUSE EXTERIOR FIELD COLOR AT GUARDHOUSE
P-4	SHERWIN WILLIAMS	TEXTURED ACRYLIC COATING MATCH COLOR SW #1018 "DOVETAIL"	EXTERIOR ACCENT COLOR
P-5	SHERWIN WILLIAMS	TEXTURED ACRYLIC COATING MATCH COLOR SW #14 "MOTH WING"	EXTERIOR ACCENT COLOR EXTERIOR COLOR AT GUARDHOUSE
P-6	SHERWIN WILLIAMS	TEXTURED ACRYLIC COATING MATCH COLOR PANTONE #355C	EXTERIOR ACCENT COLOR
P-7	SHERWIN WILLIAMS	SEMI-GLOSS PAINT (LOW VOC) "SAFETY YELLOW"	STEEL BOLLARDS, CURBS AND LIGHT POLE BASES OUTSIDE CURBED ISLANDS
P-8	SHERWIN WILLIAMS	SEMI-GLOSS PAINT, "BLACK" (OPTIONAL AS VINYL DECAL)	EXTERIOR ACCENT COLOR AT GUARDHOUSE
PREFINISHED METAL			
MTL-1	PAC-CLAD	24 GA. PREFINISHED ALUMINUM COLOR: "GRANITE"	METAL COPING, SCUPPERS, AND DOWNSPOUTS
COMPOSITE METAL PANELS (ENTRY CANOPY)			
GF-1	ALPOLIC	4" H. UET SYSTEM COLOR - MATCH P-6	PROVIDE DOW CORNING 795 SEALANT AT JOINTS. MATCH P-6
GALVANIZED METAL			
GLV-1	--	GALVANIZED STEEL (NO PAINT)	EXTERIOR METAL RAILINGS, STAIRS AND LANDINGS
STOREFRONT / WINDOW SYSTEM			
SF-1	KAUNER	PREFINISHED ALUMINUM COLOR - DARK BRONZE	STOREFRONT / WINDOW SYSTEM (TYP.)
AIR INTAKE LOUVERS			
LV-1	GREENHECK	PREFINISHED ALUMINUM (MATCH P-1) COLOR - "BONE WHITE", #GF02	BUILDING LOUVERS (TYP.) (L1 AND L3 ONLY)
LV-2	GREENHECK	PREFINISHED ALUMINUM (MATCH P-2) COLOR - "SMOKE", #GF04	BUILDING LOUVERS (TYP.) (L2 AND L4)

EXTERIOR COLOR LEGEND

P-1	TEXTURED ACRYLIC COATING SHERWIN WILLIAMS MATCH COLOR SW #1646 "FIRST STAR" (RGB 218 - 211 - 212)
P-2	TEXTURED ACRYLIC COATING SHERWIN WILLIAMS MATCH COLOR SW #1016 "MINDFUL GRAY" (RGB 188 - 183 - 173)
P-3	TEXTURED ACRYLIC COATING SHERWIN WILLIAMS MATCH COLOR SW #1011 "DORIAN GRAY" (RGB 172 - 161 - 158)
P-4	TEXTURED ACRYLIC COATING SHERWIN WILLIAMS MATCH COLOR SW #1018 "DOVETAIL" (RGB 144 - 138 - 131)
P-5	TEXTURED ACRYLIC COATING SHERWIN WILLIAMS MATCH COLOR SW #14 "MOTH WING" (RGB 160 - 144 - 127)
P-6	TEXTURED ACRYLIC COATING SHERWIN WILLIAMS ACCENT COLOR - PANTONE COLOR #355C (RGB 0 - 103 - 224) (CMYK 83 - 1 - 0 - 0)

SHELL BUILDING FINISH NOTES

- SEE SPECIFICATIONS FOR EXTERIOR TEXTURED ACRYLIC COATING. COLORS TO MATCH SHERWIN WILLIAMS PAINT COLORS AS INDICATED IN SHELL BUILDING MATERIAL FINISH KEY.
- PAIN EXTERIOR HOLLOW METAL DOORS & FRAMES SEMI-GLOSS, COLOR TO MATCH P-2.
- PAINT CONCRETE FILLED STEEL BOLLARDS SEMI-GLOSS P-1 "SAFETY YELLOW".
- EXTERIOR CONCRETE WALL PANEL CONTROL JOINTS TO BE SEALED WITH SONNEBORN NP-21 OR APPROVED EQUAL.
- PROVIDE 1-HR. RATED CONCRETE WALL PANEL JOINTS AT VERTICAL EXIT ENCLOSURES, (STAIRS) CONTROL JOINTS TO BE SEALED WITH SONNEBORN NP-21 OR APPROVED EQUAL.

SYMBOL LEGEND

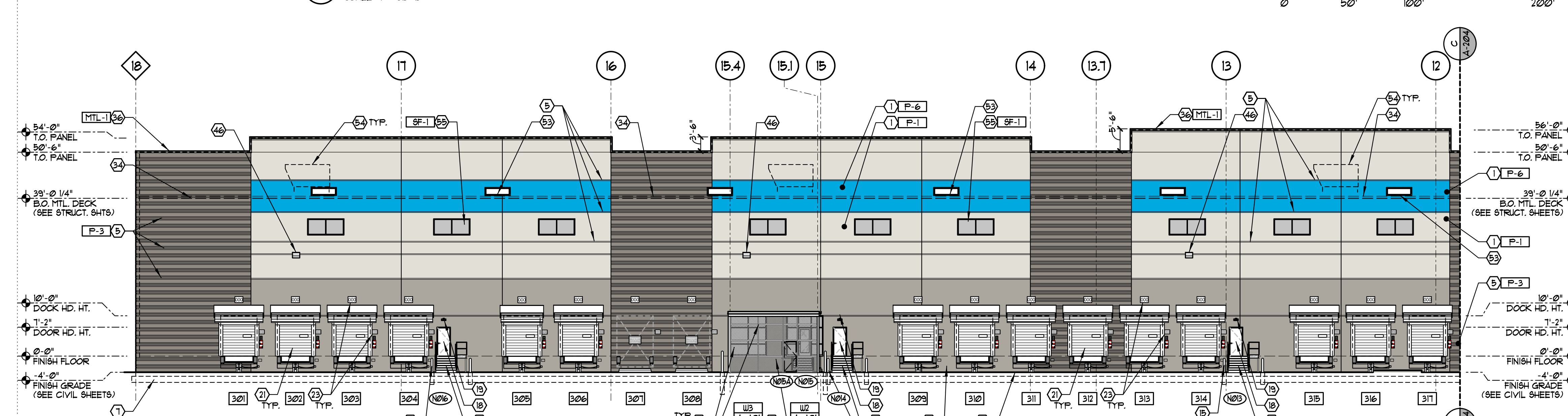
20	SHELL BUILDING ELEVATION CODED NOTE TAG (SEE SHEET A-203 AND A-204 FOR SCHEDULE)
200	DOOR NUMBER TAG (SEE SHEET A-400 FOR DOOR SCHEDULE)
200	DOCK/COMPACTOR DOOR NUMBER TAG (SEE SHEET A-400 FOR DOOR SCHEDULE)
X (A-40)	STOREFRONT SYSTEM TAG (SEE SHEET A-400 FOR UNIT ELEVATIONS)
	MATERIAL / FINISH TAG (SEE SHEET A-203 AND A-204 FOR MATERIAL FINISH KEY)
	BUILDING EXPANSION JOINT (SEE DETAIL A/A-404)

EXTERIOR MATERIAL LEGEND

WEST ELEVATION	
TOTAL WALL AREA =	53,396 SF
CONCRETE WALL PANELS W/ TEXTURED PAINT =	30,611 SF 58 %
CONCRETE WALL PANELS W/ FORMLINERS & REVEAL =	15,788 SF 30 %
ALUMINUM METALS =	1,136 SF 2 %
ARCHITECTURAL METALS =	911 SF 1 %
METAL DOORS	4,448 SF 8 %

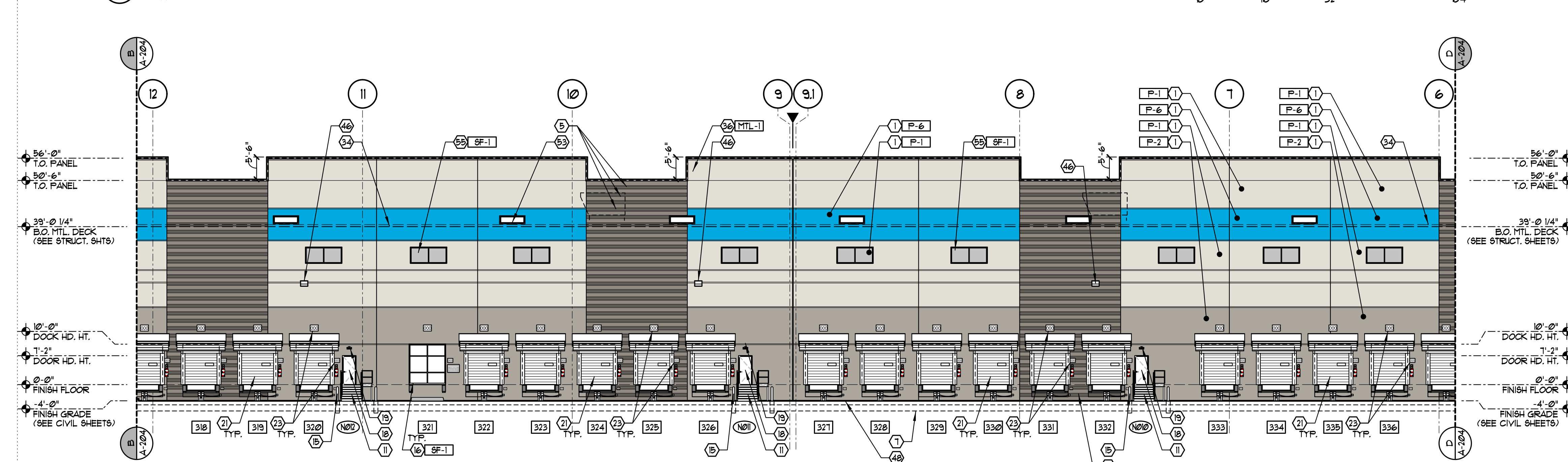
OVERALL WEST BUILDING ELEVATION

SCALE 1" = 50'-0"



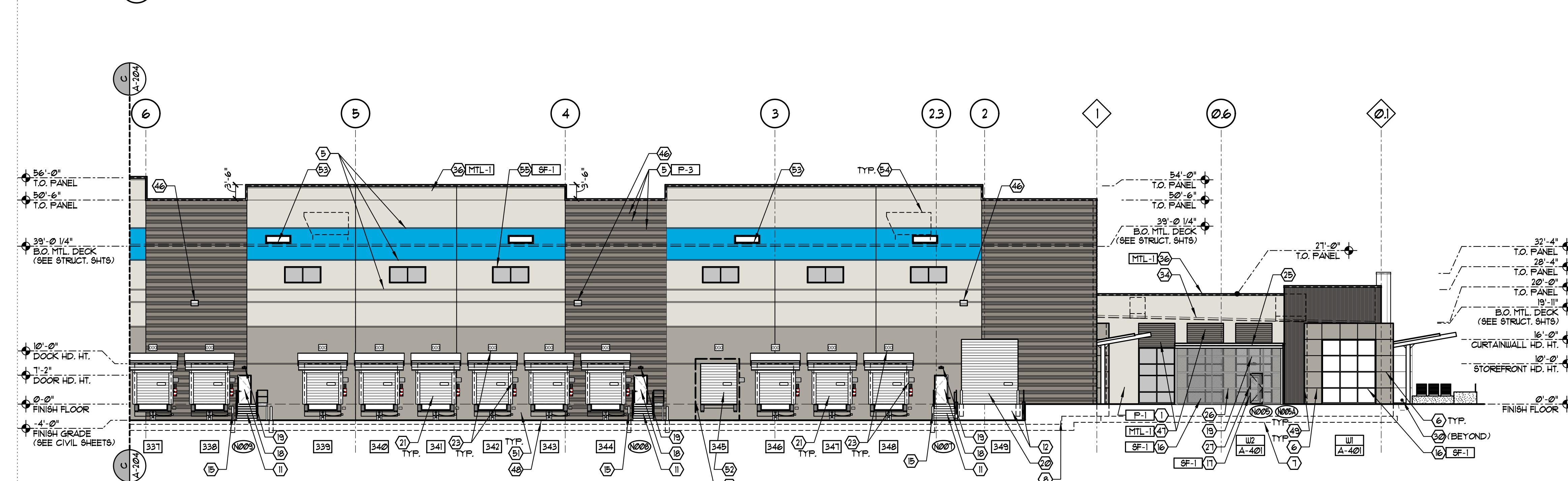
PARTIAL WEST BUILDING ELEVATION

SCALE 1/16" = 1'-0"



PARTIAL WEST BUILDING ELEVATION

SCALE 1/16" = 1'-0"



PARTIAL WEST BUILDING ELEVATION

SCALE 1/16" = 1'-0"

