

**10** INTERIOR, NON-RATED WALL, 2x6 WOOD STUDS

5/8" GYP. BOARD

2x6 WOOD STUDS @ 16" O.C.

6.34"

R-21 BATT INSULATION

CENTER OR FACE OF STUDS WHERE OCC

**11** INTERIOR, NON-RATED WALL, 2x4 WOOD STUDS

5/8" GYP. BOARD

2x4 WOOD STUDS @ 16" O.C.

4.34"

R-15 BATT INSULATION

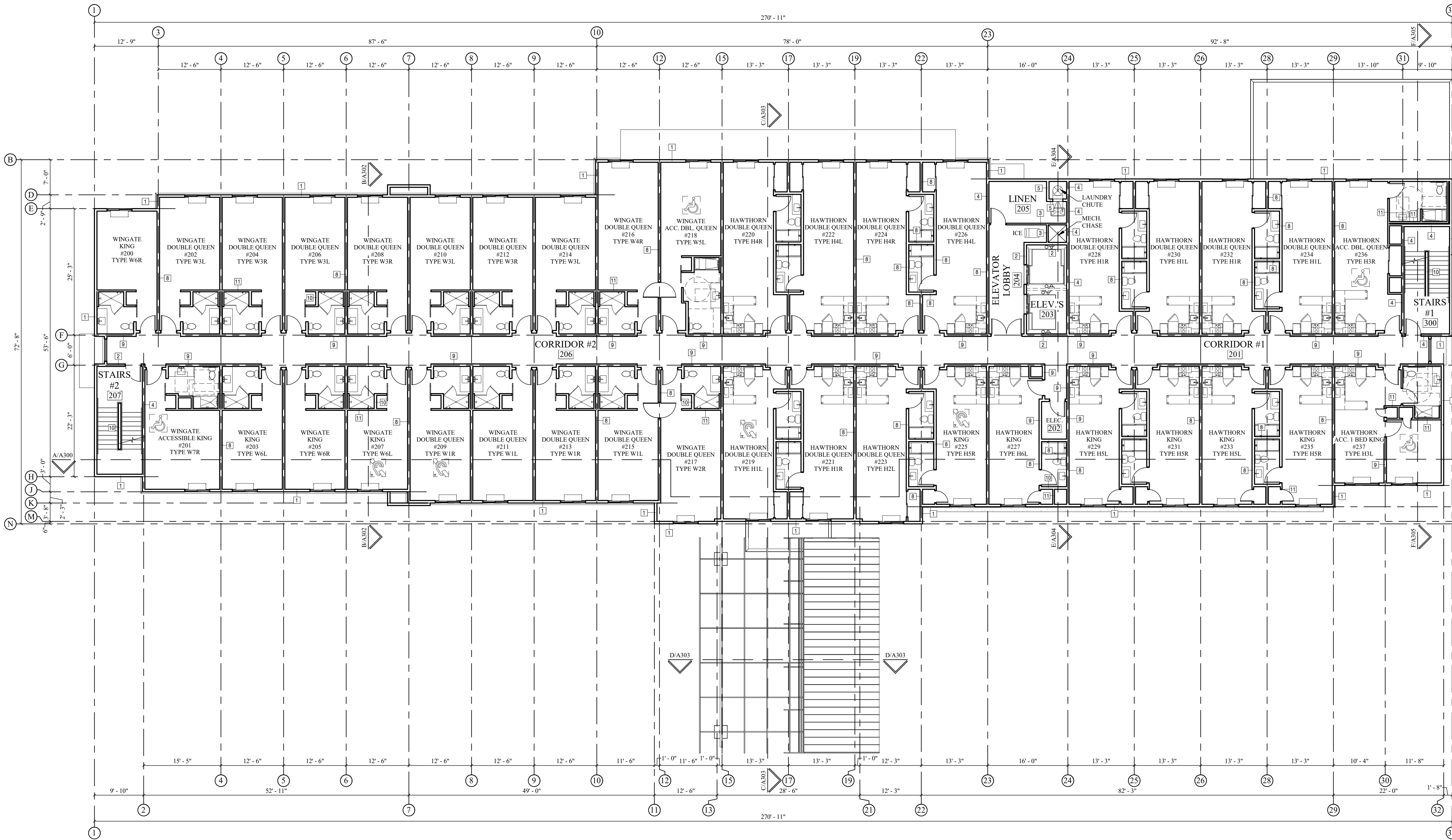
CENTER OR FACE OF STUDS WHERE OCC

**WALL TYPE NOTES:**

1. FIRE TEST REPORTS REFERENCED BELOW PROVIDE ADDITIONAL INFORMATION CONTRACTOR IS RESPONSIBLE FOR COMPLYING WITH LISTED REPORTS REQUIREMENTS, FOR CONTRADICTIONS CONTACT REFLECT ARCHITECTURE LLC IMMEDIATELY.
2. FIRE PARTITIONS TO HAVE CONTINUOUS GYP. BOARD EXTENDED FROM FLOOR DECK UP TO FIRE RATED CEILING ASSEMBLY.
3. FIRE BARRIERS TO HAVE CONTINUOUS GYP. BOARD EXTENDED UP TO BOTTOM OF ROOF/FLOOR DECK.
4. ANY DUCTED WALL PENETRATIONS ARE TO BE PROVIDED W/ FIRE/SMOKE DAMPERS AS INDICATED ON MECHANICAL PLANS. SEE FIRE STOPPING DETAILS ON SHEETS A700 & A701 FOR ADDITIONAL WALL PENETRATION REQUIREMENTS.

A100





**LEGEND**

- 1 WALL TYPE, SEE TYPES ON THIS SHEET
- 10 DOOR TAG, SEE DOOR SCHEDULE FOR MORE INFORMATION
- 10 WINDOW TAG, SEE WINDOW SCHEDULE FOR MORE INFORMATION
- NAME ROOM TAG, SEE ROOM FINISH SCHEDULE FOR MORE INFORMATION
- 101 INDICATES ACCESSIBLE ROOMS FOR THE MOBILITY IMPAIRED, SEE ACCESSIBILITY NOTES & DETAILS ON SHEET G200 FOR MORE INFORMATION
- INDICATES ROOMS WITH ADDITIONAL COMMUNICATION FEATURES FOR THE HEARING IMPAIRED, SEE ADDITIONAL COMMUNICATION FEATURES NOTE ON THIS SHEET
- BUILDING SECTION TAG
- A/A300 SECTION NUMBER & SHEET
- DICTIONARY OF SECTION CUT
- INTERIOR ELEVATION TAG
- ELEVATION SHEET LOCATION
- 1 ELEVATION NUMBER

**ADDITIONAL COMMUNICATION FEATURES**

ROOMS MARKED WITH THE ADDITIONAL COMMUNICATION FEATURES SYMBOL AS SHOWN IN THE LEGEND SHALL HAVE THE FOLLOWING FEATURES INSTALLED WITHIN THE ROOM: VISIBLE FIRE ALARM, VISIBLE NOTIFICATION DEVICE TO ALERT OF INCOMING PHONE CALLS AND DOOR KNOCK, TELEPHONE(S) WITH VOLUME CONTROLS, ELECTRICAL OUTLETS WITHIN 48 INCHES OF PHONE TO FACILITATE THE USE OF A TTY.

**2ND FLOOR ROOM MATRIX**

ROOM TYPE	#
WINGATE KING	4
WINGATE DOUBLE QUEEN	13
WINGATE ACCESSIBLE KING	1
WINGATE ACCESSIBLE DOUBLE QUEEN	2
HAWTHORN KING	6
HAWTHORN DOUBLE QUEEN	11
HAWTHORN 1 BED KING	1
HAWTHORN ACCESSIBLE 1 BED KING	1
HAWTHORN ACCESSIBLE DOUBLE QUEEN	2
TOTAL ROOMS	38
TOTAL ACCESSIBLE ROOMS	4
TOTAL ROOMS W/ ADDITIONAL COMMUNICATION FEATURES	4

**HOTEL ROOM MATRIX**

ROOM TYPE	#
WINGATE KING	16
WINGATE DOUBLE QUEEN	50
WINGATE ACCESSIBLE KING	4
WINGATE ACCESSIBLE DOUBLE QUEEN	2
HAWTHORN KING	18
HAWTHORN DOUBLE QUEEN	33
HAWTHORN 1 BED KING	1
HAWTHORN ACCESSIBLE 1 BED KING	1
HAWTHORN ACCESSIBLE DOUBLE QUEEN	3
TOTAL ROOMS	129
TOTAL ACCESSIBLE ROOMS	11
TOTAL ROOMS W/ ADDITIONAL COMMUNICATION FEATURES	12
TOTAL WINGATE ROOMS	72
TOTAL HAWTHORN ROOMS	57

- ELEVATOR NOTES**
- ELEVATOR SUPPLIER IS TO PROVIDE COMPLETE ELEVATOR DESIGN, DETAILS & ACCESSIBILITY SPECIFICATIONS FOR 3,500 LB & 2,500 LB THYSSENKRUPP ENDURA OR SIMILAR. 3,500 LB ELEVATOR TO BE FRONT & REAR OPENING, 2,500 LB ELEVATOR TO BE FRONT OPENING ONLY. ELEVATORS TO BE EQUIPPED W/ 90 MINUTE FIRE PROTECTED HOISTWAY DOORS
  - ALL ELEVATORS ARE TO BE EQUIPPED W/ PHASE I EMERGENCY RECALL OPERATION AND PHASE II EMERGENCY IN-CAR OPERATION IN ACCORDANCE W/ ASME A17.1
  - EMERGENCY SIGN: AN APPROVED PICTORIAL SIGN OF A STANDARDIZED DESIGN MUST BE POSTED ADJACENT TO EACH ELEVATOR STATION ON ALL FLOORS, THE SIGN MUST READ: "IN FIRE EMERGENCY, DO NOT USE ELEVATOR. USE STAIRS"
  - ELEVATOR RECALL FOR FIRE FIGHTERS' SERVICE: ALL INITIATING DEVICES USED TO INITIATE FIRE FIGHTERS' SERVICE RECALL MUST BE CONNECTED TO THE BUILDING FIRE ALARM SYSTEM.

2ND FLOOR PLAN  
3/32" = 1'-0"

**WALL TYPES** 3/4" = 1'-0"

**1 EXTERIOR BEARING WALL, 1-HOUR FIRE PROTECTION**  
2x6 WOOD STUDS @ 16" O.C. (U.N.O. ON STRUCTURAL)

R-21 BATT INSULATION  
7/16" APA RATED WOOD SHEATHING PER STRUCTURAL PLANS  
5/8" TYPE "X" GYP. BOARD  
2X6 WOOD STUDS @ 16" O.C.  
CENTER OR FACE OF STUDS WHERE OCCURS

FIRE RATING: 1-HOUR  
FIRE TEST: ESR-2781 & 2018 IBC TABLE 721.1(2) ITEM NUMBER 16-1.3  
CEMENTITIOUS STUCCO W/ ACRYLIC COAT OVER 1" RIGID FOAM, PROVIDE MOISTURE/AIR BARRIER  
ADHERED STONE VENEER (SHOWN) OR METAL PANELS, INSTALL PER MANUFACTURER'S SPECIFICATIONS

**2 INTERIOR, 2-HOUR FIRE BARRIER**  
2x6 WOOD STUDS

R-21 BATT INSULATION  
(2)-5/8" TYPE "X" GYP. BOARD  
2X6 WOOD STUDS @ 16" O.C.  
CENTER OR FACE OF STUDS WHERE OCCURS

FIRE RATING: 2-HOUR  
FIRE TEST: UL U301

**3 INTERIOR, 2-HOUR FIRE BARRIER**  
2x4 WOOD STUDS

R-15 BATT INSULATION  
(2)-5/8" TYPE "X" GYP. BOARD  
2X4 WOOD STUDS @ 16" O.C.  
CENTER OR FACE OF STUDS WHERE OCCURS

FIRE RATING: 2-HOUR  
FIRE TEST: UL U301

**4 INTERIOR SOUNDPROOF, 2-HOUR FIRE BARRIER**  
5/8" QUIETROCK GYP. BOARD

(2)-5/8" TYPE "X" GYP. BOARD  
2X6 WOOD STUDS @ 16" O.C.  
CENTER OR FACE OF STUDS WHERE OCCURS

FIRE RATING: 2-HOUR  
FIRE TEST: UL U301

**5 INTERIOR, 2-HOUR FIRE BARRIER, SHAFT LINER**  
3" THERMAFIBER SAFB  
(2)-1/2" TYPE "C" GYP. BOARD  
4" C-H STUD 400CH-18  
1" USG SHEETROCK BRAND GYPSUM LINER PANELS

FIRE RATING: 2-HOUR  
FIRE TEST: UL U415 SYSTEM C

**6 INTERIOR, 1-HOUR FIRE PARTITION, 2x6 WOOD STUDS**  
6A INTERIOR, 1-HOUR FIRE BARRIER, 2x6 WOOD STUDS

R-21 BATT INSULATION  
5/8" TYPE "X" GYP. BOARD  
2X6 WOOD STUDS @ 16" O.C.  
CENTER OR FACE OF STUDS WHERE OCCURS

FIRE RATING: 1-HOUR  
FIRE TEST: UL U305  
STC RATING: 33  
STC TEST: RAL-TL11-172

**7 INTERIOR SOUNDPROOF, 1-HOUR FIRE BARRIER, ALTERNATING WOOD STUDS**  
(SEE SHEET A700 FOR BACK TO BACK OUTLET BOXES DETAIL)

5/8" TYPE "X" GYP. BOARD  
5/8" QUIETROCK GYP. BOARD  
2X4 ALTERNATING WOOD STUDS @ 16" O.C.  
2X6 DOUBLE TOP & DOUBLE BASE PLATES  
CENTER OR FACE OF STUDS WHERE OCCURS

FIRE RATING: 1-HOUR  
FIRE TEST: UL U340  
STC RATING: 60  
STC TEST: NRCC TL-93-225

**8 INTERIOR SOUNDPROOF, 1-HOUR FIRE PARTITION, ALTERNATING WOOD STUDS**  
(SEE SHEET A700 FOR BACK TO BACK OUTLET BOXES DETAIL)

5/8" TYPE "X" GYP. BOARD  
5/8" QUIETROCK GYP. BOARD  
2X4 ALTERNATING WOOD STUDS @ 16" O.C.  
2X6 DOUBLE TOP & DOUBLE BASE PLATES  
CENTER OR FACE OF STUDS WHERE OCCURS

FIRE RATING: 1-HOUR  
FIRE TEST: UL U340  
STC RATING: 60  
STC TEST: NRCC TL-93-225

**9 INTERIOR SOUNDPROOF, 1-HOUR FIRE PARTITION, 2x6 WOOD STUDS**

5/8" QUIETROCK GYP. BOARD  
5/8" TYPE "X" GYP. BOARD  
2X6 WOOD STUDS SPACING PER STRUCTURAL  
CENTER OR FACE OF STUDS WHERE OCCURS

FIRE RATING: 1-HOUR  
FIRE TEST: UL U311  
STC RATING: 52  
STC TEST: SA-830702

**10 INTERIOR, NON-RATED WALL, 2x6 WOOD STUDS**

5/8" GYP. BOARD  
2X6 WOOD STUDS @ 16" O.C.  
CENTER OR FACE OF STUDS WHERE OCCURS

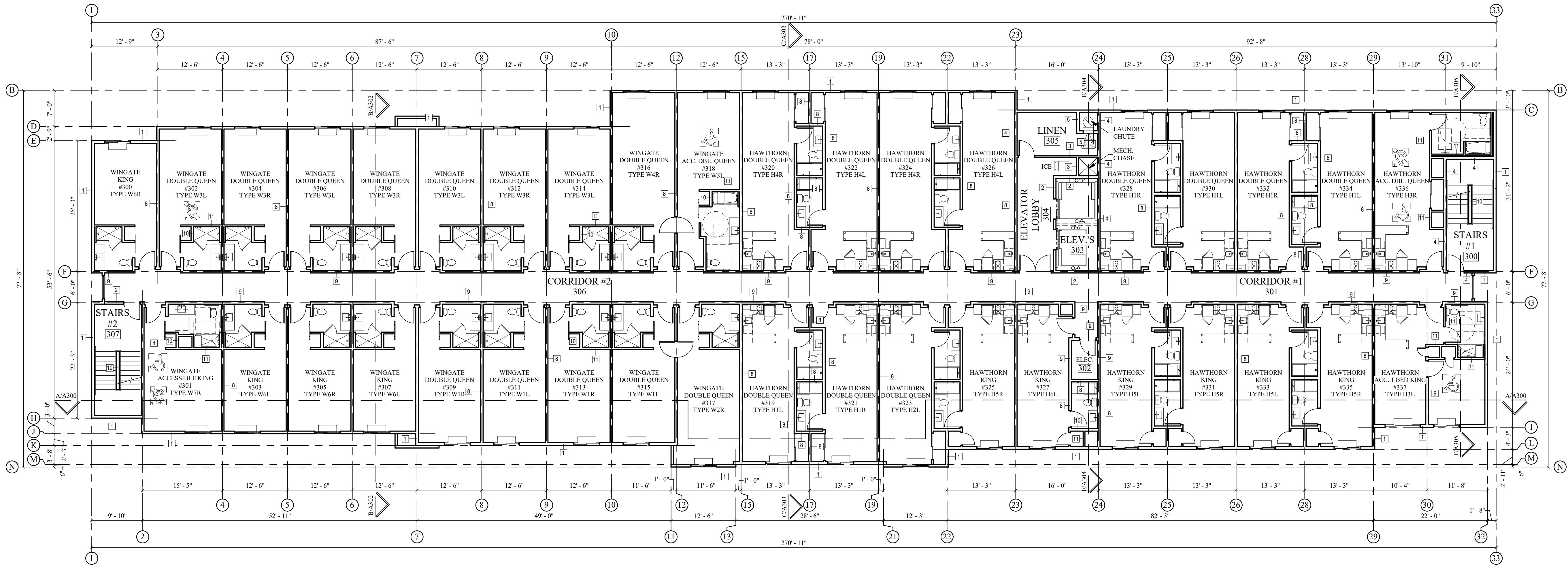
**11 INTERIOR, NON-RATED WALL, 2x4 WOOD STUDS**

5/8" GYP. BOARD  
2X4 WOOD STUDS @ 16" O.C.  
CENTER OR FACE OF STUDS WHERE OCCURS

**WALL TYPE NOTES:**

- FIRE TEST REPORTS REFERENCED PROVIDE ADDITIONAL INFORMATION CONTRACTOR IS RESPONSIBLE FOR COMPLYING W/ LISTED REPORTS REQUIREMENTS. FOR CONTRADICTIONS CONTACT REFLECT ARCHITECTURE LLC IMMEDIATELY.
- FIRE PARTITIONS TO HAVE CONTINUOUS GYP. BOARD EXTENDED FROM FLOOR DECK UP TO FIRE RATED CEILING ASSEMBLY.
- FIRE BARRIERS TO HAVE CONTINUOUS GYP. BOARD EXTENDED UP TO BOTTOM OF ROOF/FLOOR DECK.
- ANY DUCTED WALL PENETRATIONS ARE TO BE PROVIDED W/ FIRE/SMOKE DAMPERS AS INDICATED ON MECHANICAL PLANS. SEE FIRE STOPPING DETAILS ON SHEETS A700 & A701 FOR ADDITIONAL WALL PENETRATION REQUIREMENTS.





3RD FLOOR PLAN  
3/32" = 1'-0"

#### ELEVATOR NOTES

- ELEVATOR SUPPLIER IS TO PROVIDE COMPLETE ELEVATOR DESIGN, DETAILS & ACCESSIBILITY SPECIFICATIONS FOR 3,500 LB & 2,500 LB THYSSENKRUPP ENDURA OR SIMILAR. 3,500 LB ELEVATOR TO BE FRONT & REAR OPENING. 2,500 LB ELEVATOR TO BE FRONT OPENING ONLY. ELEVATORS TO BE EQUIPPED W/ 90 MINUTE FIRE PROTECTED HOISTWAY DOORS
- ALL ELEVATORS ARE TO BE EQUIPPED W/ PHASE I EMERGENCY RECALL OPERATION AND PHASE II EMERGENCY IN-CAR OPERATION IN ACCORDANCE W/ ASME A17.1
- EMERGENCY SIGN: AN APPROVED PICTORIAL SIGN OF A STANDARDIZED DESIGN MUST BE POSTED ADJACENT TO EACH ELEVATOR STATION ON ALL FLOORS. THE SIGN MUST READ: "IN FIRE EMERGENCY, DO NOT USE ELEVATOR. USE STAIRS."
- ELEVATOR RECALL FOR FIRE FIGHTERS' SERVICE: ALL INITIATING DEVICES USED TO INITIATE FIRE FIGHTERS' SERVICE RECALL MUST BE CONNECTED TO THE BUILDING FIRE ALARM SYSTEM.

#### ADDITIONAL COMMUNICATION FEATURES

ROOMS MARKED WITH THE ADDITIONAL COMMUNICATION FEATURES SYMBOL AS SHOWN IN THE LEGEND SHALL BE HAVE THE FOLLOWING FEATURES INSTALLED WITHIN THE ROOM: VISIBLE FIRE ALARM, VISIBLE NOTIFICATION DEVICE TO ALERT OF INCOMING PHONE CALLS AND DOOR KNOCK, TELEPHONES WITH VOLUME CONTROLS, ELECTRICAL OUTLETS WITHIN 48 INCHES OF PHONE TO FACILITATE THE USE OF A TTY.

#### 3RD FLOOR ROOM MATRIX

ROOM TYPE	#
WINGATE KING	4
WINGATE DOUBLE QUEEN	13
WINGATE ACCESSIBLE KING	1
WINGATE ACCESSIBLE DOUBLE QUEEN	1
HAWTHORN KING	6
HAWTHORN DOUBLE QUEEN	11
HAWTHORN ACCESSIBLE 1 BED KING	1
HAWTHORN ACCESSIBLE DOUBLE QUEEN	1
TOTAL ROOMS	38
TOTAL ACCESSIBLE ROOMS	4
TOTAL ROOMS W/ ADDITIONAL COMMUNICATION FEATURES	3

#### HOTEL ROOM MATRIX

ROOM TYPE	#
WINGATE KING	16
WINGATE DOUBLE QUEEN	50
WINGATE ACCESSIBLE KING	4
WINGATE ACCESSIBLE DOUBLE QUEEN	2
HAWTHORN KING	18
HAWTHORN DOUBLE QUEEN	33
HAWTHORN 1 BED KING	1
HAWTHORN ACCESSIBLE 1 BED KING	2
HAWTHORN ACCESSIBLE DOUBLE QUEEN	3
TOTAL ROOMS	129
TOTAL ACCESSIBLE ROOMS	11
TOTAL ROOMS W/ ADDITIONAL COMMUNICATION FEATURES	12
TOTAL WINGATE ROOMS	72
TOTAL HAWTHORN ROOMS	57

#### LEGEND

- 11 WALL TYPE, SEE TYPES ON THIS SHEET
- 10 DOOR TAG, SEE DOOR SCHEDULE FOR MORE INFORMATION
- 10 WINDOW TAG, SEE WINDOW SCHEDULE FOR MORE INFORMATION
- NAME ROOM TAG, SEE ROOM FINISH SCHEDULE FOR MORE INFORMATION
- 101 INDICATES ACCESSIBLE ROOMS FOR THE MOBILITY IMPAIRED, SEE ACCESSIBILITY NOTES & DETAILS ON SHEET C200 FOR MORE INFORMATION
- INDICATES ROOMS WITH ADDITIONAL COMMUNICATION FEATURES FOR THE HEARING IMPAIRED, SEE ADDITIONAL COMMUNICATION FEATURES NOTE ON THIS SHEET
- A/A300 BUILDING SECTION TAG
- A/A300 SECTION NUMBER & SHEET
- 1 DIRECTION OF SECTION CUT
- INTERIOR ELEVATION TAG
- A/A300 ELEVATION SHEET LOCATION
- 1 ELEVATION NUMBER

#### WALL TYPES

3/4" = 1'-0"

1 EXTERIOR BEARING WALL, 1-HOUR FIRE PROTECTION  
2x6 WOOD STUDS @ 16" O.C. (U.N.O. ON STRUCTURAL)

2 INTERIOR, 2-HOUR FIRE BARRIER, 2x6 WOOD STUDS

3 INTERIOR, 2-HOUR FIRE BARRIER, 2x6 WOOD STUDS

4 INTERIOR SOUNDPROOF, 2-HOUR FIRE BARRIER, 2x6 WOOD STUDS

5 INTERIOR, 2-HOUR FIRE BARRIER, SHAFT LINER

6 INTERIOR, 1-HOUR FIRE PARTITION, 2x6 WOOD STUDS

7 INTERIOR SOUNDPROOF, 1-HOUR FIRE BARRIER, ALTERNATING WOOD STUDS

8 INTERIOR SOUNDPROOF, 1-HOUR FIRE PARTITION, ALTERNATING WOOD STUDS

9 INTERIOR SOUNDPROOF, 1-HOUR FIRE PARTITION, 2x6 WOOD STUDS

10 INTERIOR, NON-RATED WALL, 2x6 WOOD STUDS

11 INTERIOR, NON-RATED WALL, 2x4 WOOD STUDS

WALL TYPE NOTES:

- FIRE TEST REPORTS REFERENCED PROVIDE ADDITIONAL INFORMATION CONTRACTOR IS RESPONSIBLE FOR COMPLYING W/ LISTED REPORTS REQUIREMENTS. FOR CONTRADICTIONS CONTACT REFLECT ARCHITECTURE LLC IMMEDIATELY.
- FIRE PARTITIONS TO HAVE CONTINUOUS GYP. BOARD EXTENDED FROM FLOOR DECK UP TO FIRE RATED CEILING ASSEMBLY.
- FIRE BARRIERS TO HAVE CONTINUOUS GYP. BOARD EXTENDED UP TO BOTTOM OF ROOF FLOOR DECK.
- ANY DUCTED WALL PENETRATIONS ARE TO BE PROVIDED W/ FIRE SMOKE DAMPERS AS INDICATED ON MECHANICAL PLANS. SEE FIRE STOPPING DETAILS ON SHEETS A700 & A701 FOR ADDITIONAL WALL PENETRATION REQUIREMENTS.



