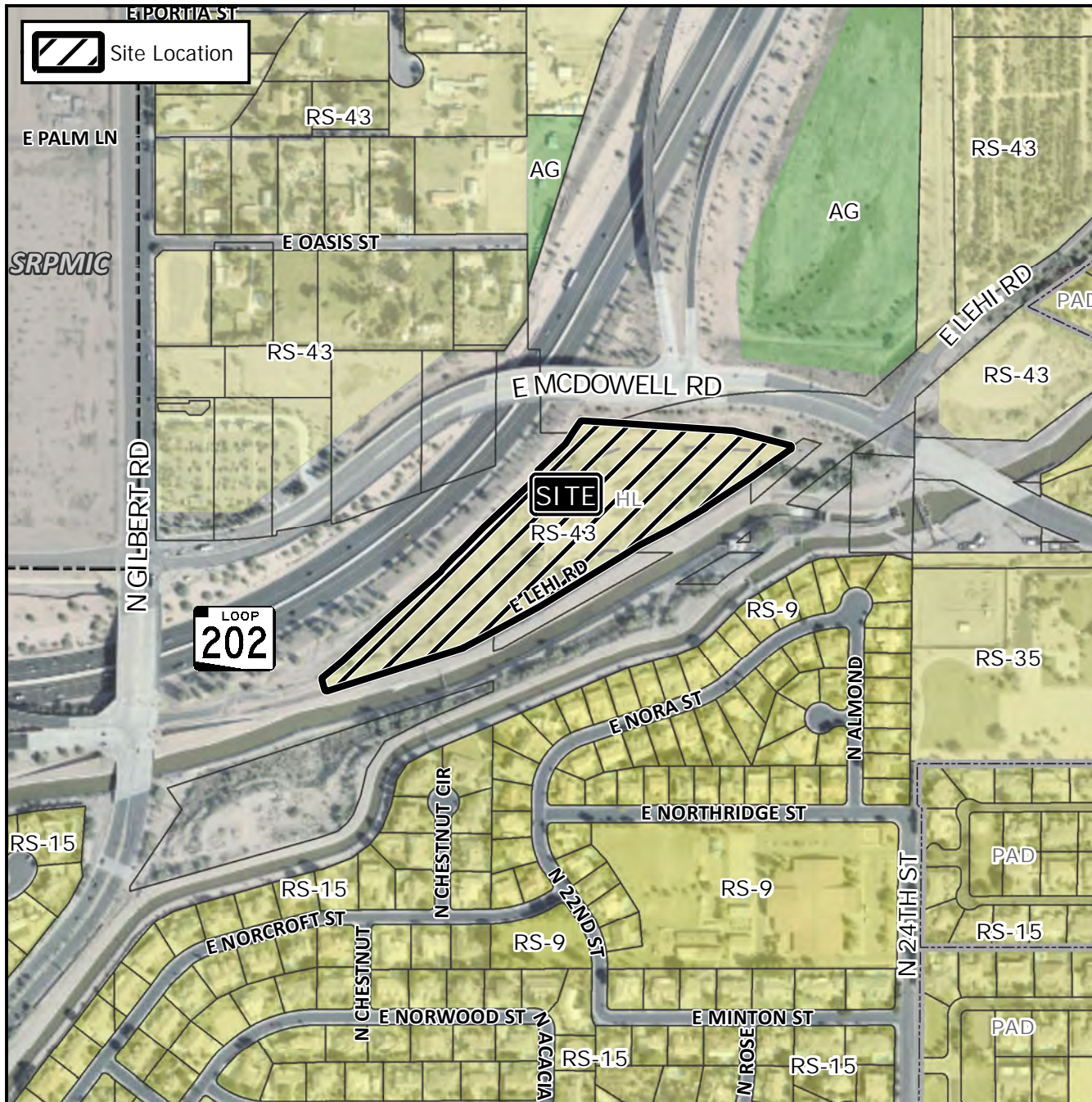


Design Review Vicinity Map: DRB21-00135

Case Details



Case:

DRB21-00135

Site / Address:

District 1. Within the 2200 to 2400 blocks of East McDowell Road (south side). Located east of Gilbert Road on the south side of McDowell Road. (9.0± acres).

Request:

Requesting review of a multiple residence development with associated commercial use.

