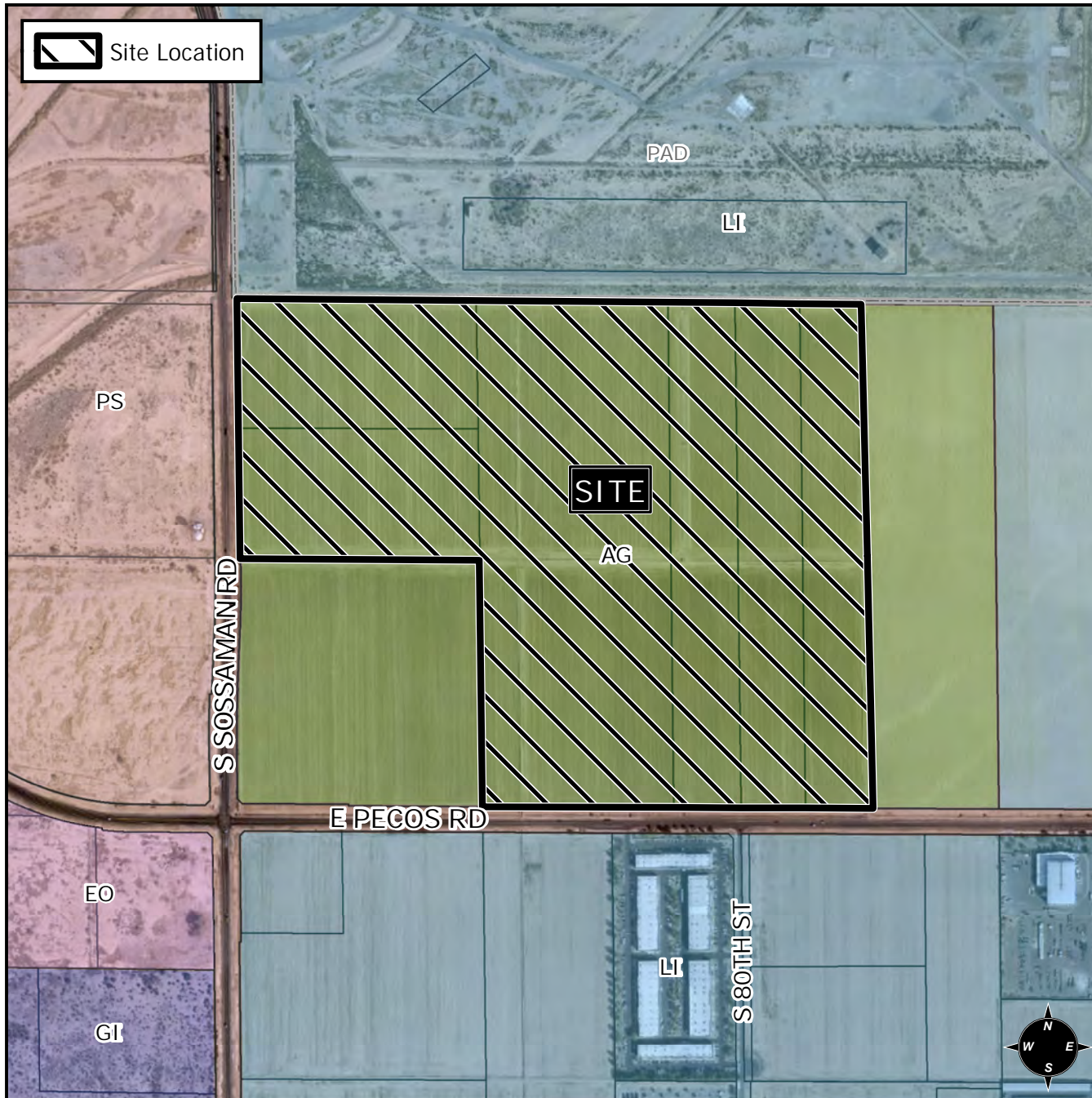


Planning and Zoning Vicinity Map: ZON21-00620

Case Details



CASE:

PRE-PLAT : ☐

ZON21-00620

SITE / ADDRESS:

District 6. Within the 7800 to 8100 blocks of East Pecos Road (north side), and within the 6800 to 7000 blocks of South Sossaman Road (east side). Located north of Pecos Road and east of Sossaman Road. (155+ acres).

REQUEST:

Rezone from Agriculture (AG) to General Industrial with a Planned Area Development Overlay (GI-PAD), and Site Plan Review. This request will allow for an industrial development.

