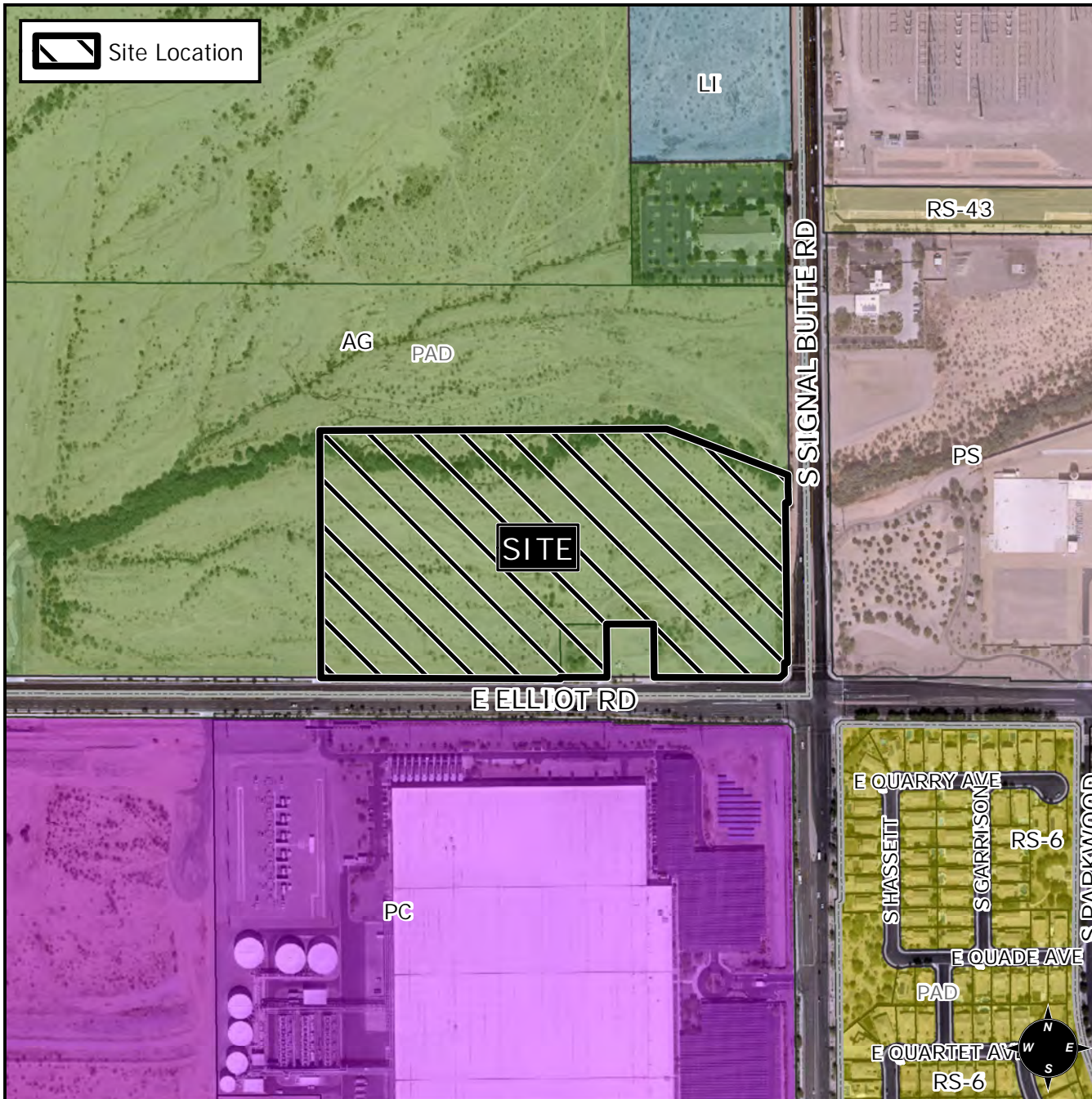


# Planning and Zoning Vicinity Map: ZON21-00540

## Case Details



CASE:

PRE-PLAT : ☐

ZON21-00540

### SITE / ADDRESS:

District 6. Within the 10500 to 10800 blocks of East Elliot Road (north side) and within the 3500 block of South Signal Butte Road (west side). Located on the northwest corner of Signal Butte Road and Elliot Road. (25.7± acres)

### REQUEST:

Rezone from Agriculture (AG) to Light Industrial (LI) with a Planned Area Development (PAD) Overlay, Site Plan Review, and Special Use Permit. This request will allow for a commercial and industrial development.

