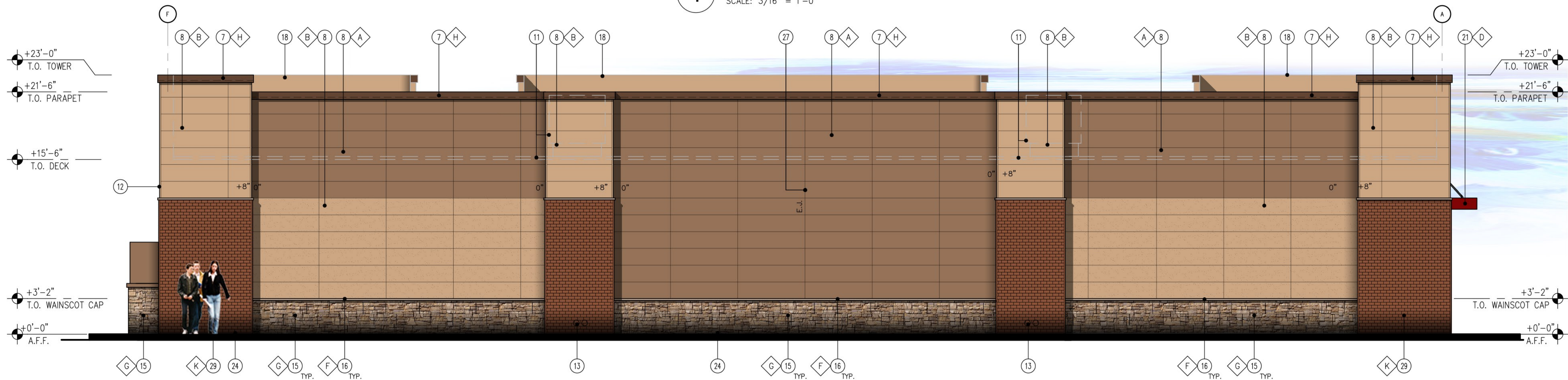
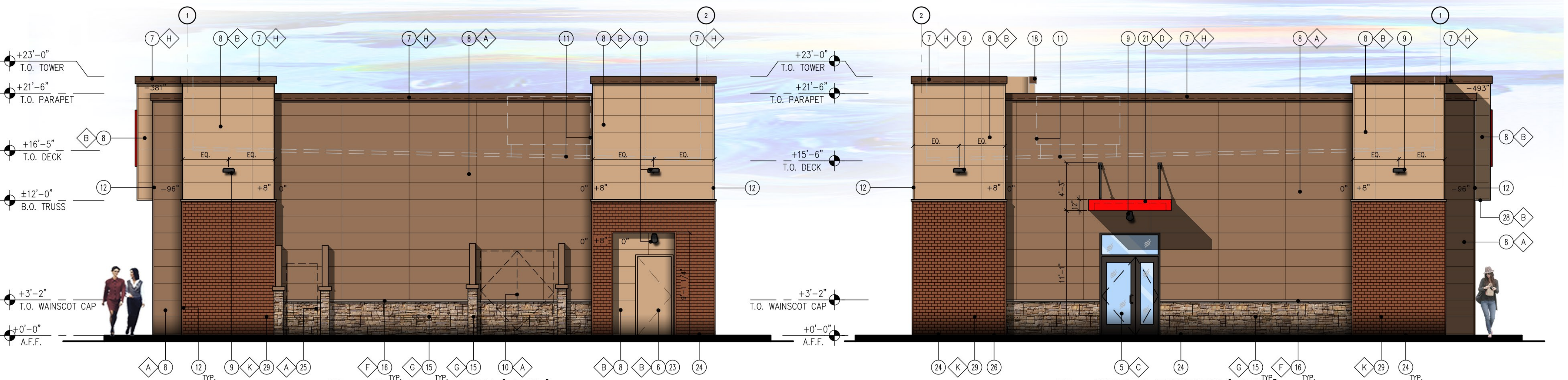




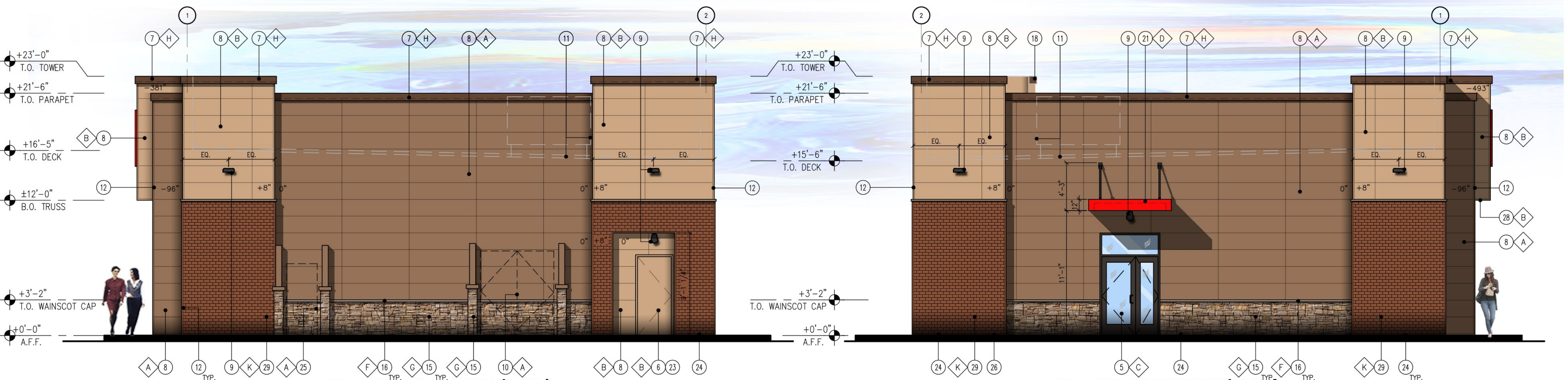
1 FRONT ELEVATION (SOUTH)
SCALE: 3/16" = 1'-0"



2 BACK ELEVATION (NORTH)
SCALE: 3/16" = 1'-0"



3 SIDE ELEVATION (EAST)
SCALE: 3/16" = 1'-0"



4 SIDE ELEVATION (WEST)
SCALE: 3/16" = 1'-0"

KEY NOTES

- STEEL COLUMN WRAP WITH BREAK METAL
- LINE OF CANOPY / SOFFIT
- DARK BRONZE ANODIZED WINDOW FRAME W/ GRAY TINTED GLASS PER SOLARBAN SOLARGRAY SPECS
- INTERNALLY ILLUMINATED SIGN (UNDER SEPARATE PERMIT)
- DARK BRONZE ANODIZED DOOR W/ GRAY TINTED GLASS STOREFRONT SYSTEM
- SERVICE DOOR, PAINT TO MATCH SURROUNDING WALL
- PRE-FINISHED METAL COPING
- NICHHA FIBER CEMENT WALL PANEL SYSTEM
- WALL MOUNTED LIGHT FIXTURE, COLOR: BLACK
- SES PANEL LOCATION
- ROOF LINE AND HVAC UNITS
- 1-1/2" CORNER KEY EDGE, TYP. TO ALL CORNERS
- ROOF DRAIN TAIL OVERFLOW, DOWNSPOUTS (LOCATED INTERNALLY)
- ADDRESSING LOCATION: 8" TALL INCH BLACK NUMBERS. FINAL AREA LOCATION TO BE DETERMINED BY FIRE DEPARTMENT.
- 1 3/8" THK. X 6" NICHHA KURASTONE HIGH FIBER CEMENT WAINSCOT
- 1-1/2" HIGH NICHHA FIBER CEMENT CAP INSTALL PER MFR. SPECS.
- FRY REGLET DRIP CAP
- PARAPET WALL BEYOND
- (KNOX) KEY-BOX AT 6'-0" AFF (IF REQUIRED BY FIRE DEPARTMENT)
- FIRE DEPARTMENT CONNECTION (IF REQUIRED)
- ALUMINUM AWNING WITH SUPPORT RODS ABOVE THE SIDE ENTRY DOOR BY CIRCLE K VENDOR. PROVIDE BLOCKING IN EXTERIOR WALL FOR AWNING AND SUPPORTS
- EMERGENCY FUEL SHUT-OFF SWITCH
- INSULATED METAL DOOR
- NICHHA ESSENTIAL "STARTER" FLASHING
- CO2 TANK WITH METAL LOUVERED CONTAINER
- EXTERIOR FINISH TO EXTEND ABOVE SIDEWALK/GRADE
- CONTROL/EXPANSION JOINT "E.J." LOCATION
- HARDIESOFFIT FIBER CEMENT PANELS
- 8" x 17 1/2" NICHHA PLYMOUTHBRICK HIGH FIBER CEMENT WAINSCOT

FINISH SCHEDULE

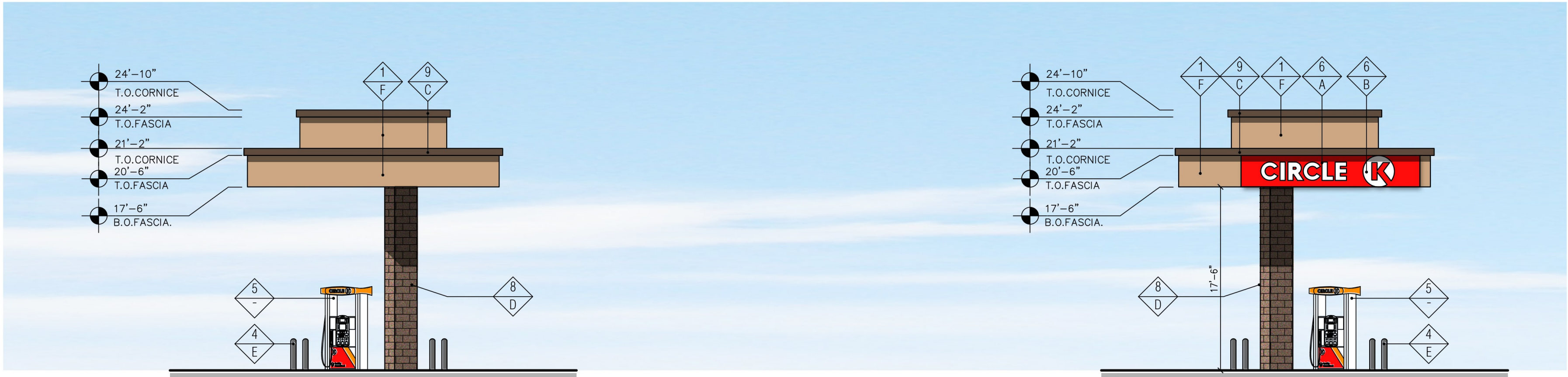
- | | | | |
|---|---------------------------------------------------------------|---|-------------------------------------------------------------------------------------------------------|
| A | ***NICHHA TUFF BLOCK
- COLOR TO MATCH #SW 6095 TOASTY | G | ***NICHHA LEDGESTONE BLUFF |
| B | ***NICHHA TUFF BLOCK
- COLOR TO MATCH #SW 6115 TOTALLY TAN | H | *SHERWIN WILLIAMS #SW 6090 - JAVA
- FIRESTONE MANSARD BROWN SR (USE FOR PRE-FINISHED METAL COPING) |
| C | 1" INSULATED, DOUBLE PANED GRAY TINTED GLASS | I | CIRCLE K ORANGE #PMS 144 |
| D | *SHERWIN WILLIAMS #SW 4081
- **SAFETY RED | J | ***NICHHA TUFF BLOCK
- COLOR TO MATCH #SW 4081 |
| E | *SHERWIN WILLIAMS #SW 7005
- CIRCLE K WHITE | K | ***NICHHA CRIMSON PLYMOUTHBRICK |
| F | ***NICHHA CHISELED SILL TAN | | |
- * USE SHERWIN WILLIAMS MANUFACTURER ONLY
** COLOR TO BE PRE-ORDERED TO ENSURE AVAILABILITY AT TIME OF CONSTRUCTION
*** PURCHASED BY CIRCLE K/INSTALLED BY G.C.
G.C. TO COORDINATE WITH CIRCLE K PM AND OWNER'S REP
circlek@nichha.com

FRONT ELEVATION (SOUTH)		
FINISH TYPE	AREA	PERCENTAGE
NICHHA WALL PANEL SYSTEM #SW 6115 - TOTALLY TAN	876.4 sq. ft.	34%
NICHHA WALL PANEL SYSTEM #SW 6095 - TOASTY	613.4 sq. ft.	24%
NICHHA WALL PANEL SYSTEM #SW 4081 - SAFETY RED	72 sq. ft.	3%
GLASSING/ STOREFRONT SYSTEM	562.1 sq. ft.	21%
NICHHA KURASTONE, LEDGESTONE BLUFF	273.3 sq. ft.	10%
NICHHA CRIMSON PLYMOUTHBRICK	194 sq. ft.	8%

BACK ELEVATION (NORTH)		
FINISH TYPE	AREA	PERCENTAGE
NICHHA WALL PANEL SYSTEM #SW 6115 - TOTALLY TAN	734.9 sq. ft.	30%
NICHHA WALL PANEL SYSTEM #SW 6095 - TOASTY	1064.7 sq. ft.	44%
NICHHA KURASTONE, LEDGESTONE BLUFF	283.2 sq. ft.	12%
NICHHA CRIMSON PLYMOUTHBRICK	350 sq. ft.	14%

SIDE ELEVATION (EAST)		
FINISH TYPE	AREA	PERCENTAGE
NICHHA WALL PANEL SYSTEM #SW 6115 - TOTALLY TAN	236.8 sq. ft.	22%
NICHHA WALL PANEL SYSTEM #SW 6095 - TOASTY	558.1 sq. ft.	50%
METAL DOOR	23.9 sq. ft.	2%
GLASSING/ STOREFRONT SYSTEM	93.3 sq. ft.	17%
NICHHA CRIMSON PLYMOUTHBRICK	183.2 sq. ft.	9%

SIDE ELEVATION (WEST)		
FINISH TYPE	AREA	PERCENTAGE
NICHHA WALL PANEL SYSTEM #SW 6115 - TOTALLY TAN	183.8 sq. ft.	17%
NICHHA WALL PANEL SYSTEM #SW 6095 - TOASTY	566.9 sq. ft.	51%
ALUMINUM AWNING #SW 4081 - SAFETY RED	7.3 sq. ft.	1%
GLASSING/ STOREFRONT SYSTEM	48.6 sq. ft.	5%
NICHHA KURASTONE, LEDGESTONE BLUFF	80.1 sq. ft.	7%
NICHHA CRIMSON PLYMOUTHBRICK	201.4 sq. ft.	19%

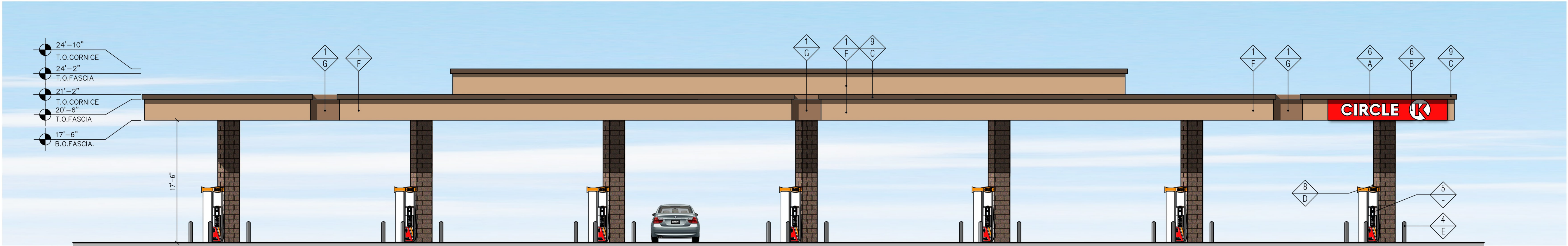


3 "SIDE" ELEVATION (EAST)
SCALE: 1/8" = 1'-0"

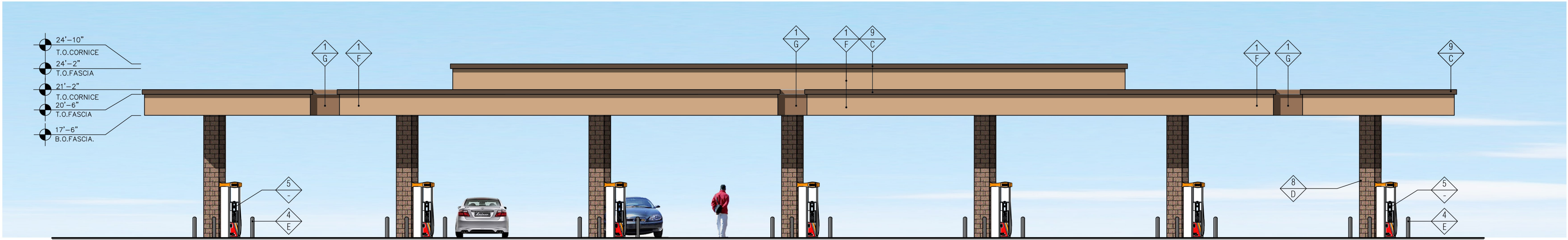
4 "SIDE" ELEVATION (WEST)
SCALE: 1/8" = 1'-0"

FINISH SCHEDULE	
▲	FINISH MATERIAL
1	ACM PANEL
2	NOT USED
3	NOT USED
4	6" Ø BOLLARD, 36" HIGH
5	FUEL PUMP
6	INTERNALLY ILLUMINATED SIGN UNDER SEPARATE PERMIT
7	NOT USED
8	4X8X16 CMU VENEER, SPLIT FACE, GROUTED TO MATCH CMU COLOR
9	PRE-FINISHED METAL COPING
▼	FINISH COLOR
A	CIRCLE K RED #PMS 485
B	CIRCLE K WHITE
C	FIRESTONE MANSARD BROWN SR (FOR PRE-FINISHED METAL COPING) OR MATCH SHERWIN WILLIAMS - #SW 6090- JAVA
D	SUPERLITE BLOCK SPLITFACE CMU - "BOOT BROWN"
E	PVC BOLLARD SLEEVE "DARK GRAY"
F	SHERWIN WILLIAMS - SW6115 - TOTALLY TAN
G	SHERWIN WILLIAMS - SW6095 - TOASTY

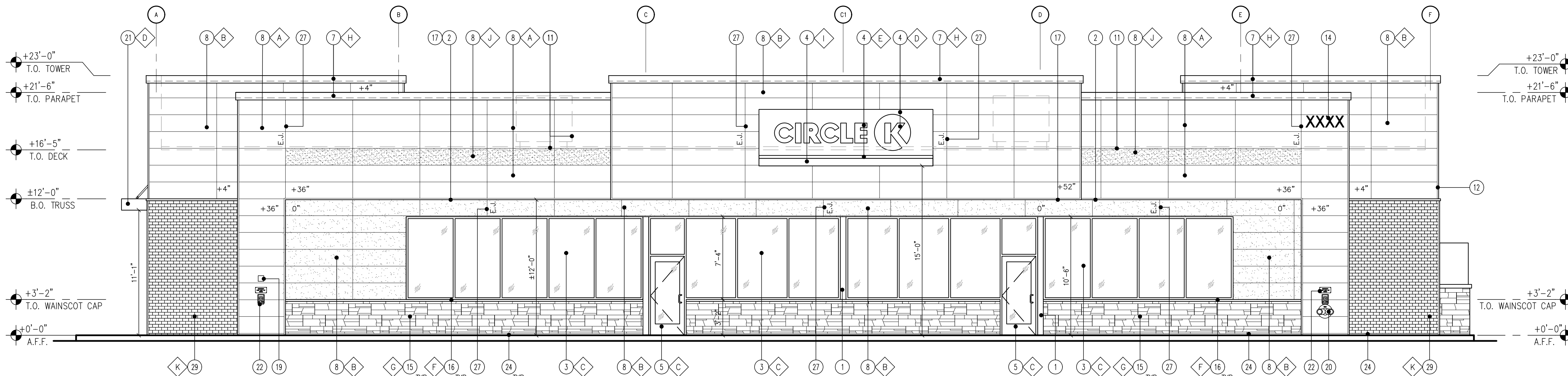
Notes:
1. Colors shown on these elevations are for illustration purposes only. For actual colors, refer to manufacturer's samples.
2. The fascia panels are pre-finished by signage vendor.
3. All signs require a separate submittal.
4. All lighting on canopy to be flush mounted with fascia.



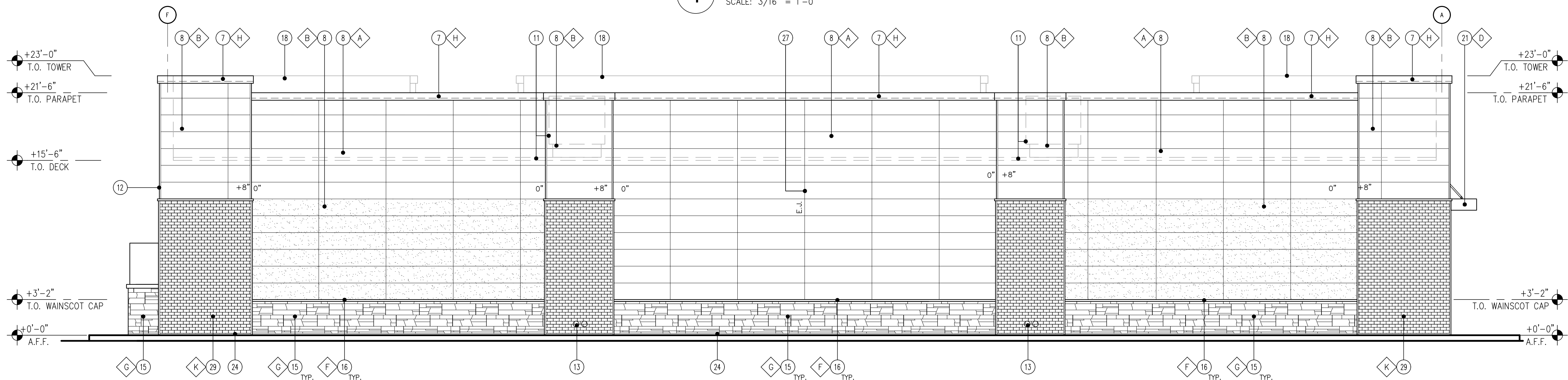
2 "FRONT" ELEVATION (SOUTH)
SCALE: 1/8" = 1'-0"



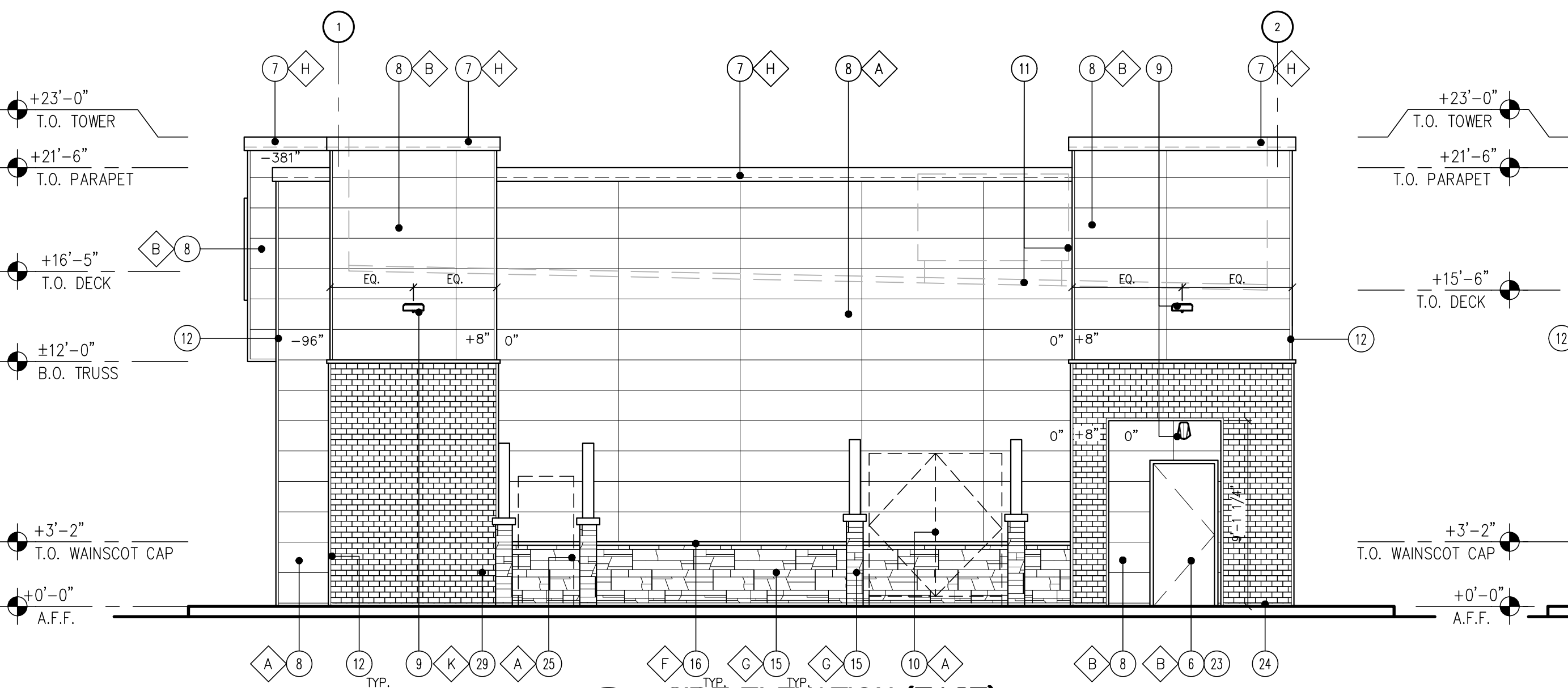
1 "REAR" ELEVATION (NORTH)
SCALE: 1/8" = 1'-0"



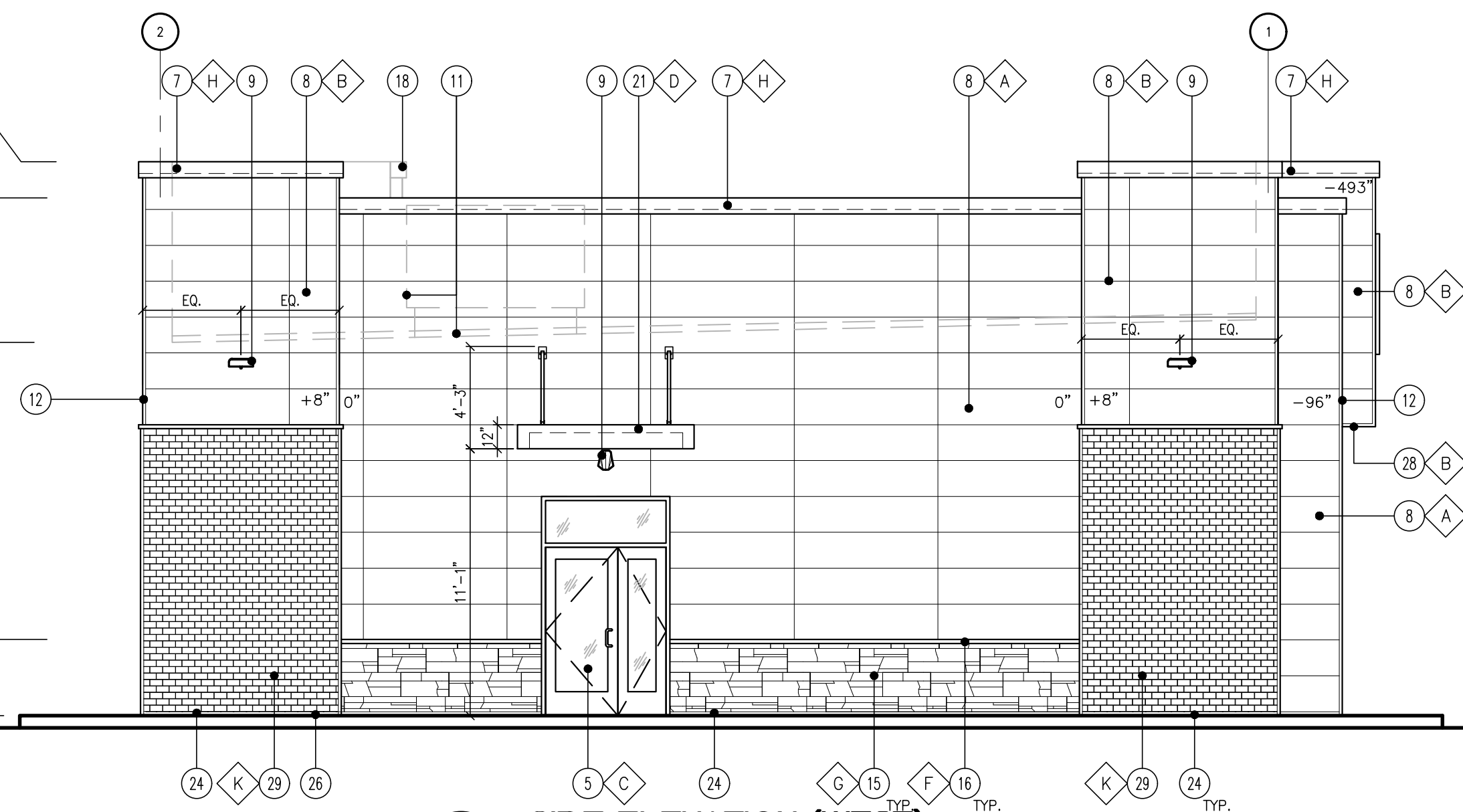
1 FRONT ELEVATION (SOUTH)
SCALE: 3/16" = 1'-0"



2 BACK ELEVATION (NORTH)
SCALE: 3/16" = 1'-0"



3 SIDE ELEVATION (EAST)
SCALE: 3/16" = 1'-0"



4 SIDE ELEVATION (WEST)
SCALE: 3/16" = 1'-0"

KEY NOTES

- STEEL COLUMN WRAP WITH BREAK METAL
- LINE OF CANOPY / SOFFIT
- DARK BRONZE ANODIZED WINDOW FRAME W/ GRAY TINTED GLASS PER SOLARBAN SOLARGRAY SPECS
- INTERNALLY ILLUMINATED SIGN (UNDER SEPARATE PERMIT)
- DARK BRONZE ANODIZED DOOR W/ GRAY TINTED GLASS STOREFRONT SYSTEM
- SERVICE DOOR, PAINT TO MATCH SURROUNDING WALL
- PRE-FINISHED METAL COPING
- NICHHA FIBER CEMENT WALL PANEL SYSTEM
- WALL MOUNTED LIGHT FIXTURE, COLOR: BLACK
- SES PANEL LOCATION
- ROOF LINE AND HVAC UNITS
- 1-1/2" CORNER KEY EDGE, TYP. TO ALL CORNERS
- ROOF DRAIN TAIL OVERFLOW, DOWNSPOUTS (LOCATED INTERNALLY)
- ADDRESSING LOCATION: 8" TALL INCH BLACK NUMBERS. FINAL AREA LOCATION TO BE DETERMINED BY FIRE DEPARTMENT.
- 1 3/8" THK. X 6" NICHHA KURASTONE HIGH FIBER CEMENT WAINSCOT
- 1-1/2" HIGH NICHHA FIBER CEMENT CAP INSTALL PER MFR. SPECS.
- FRY REGLET DRIP CAP
- PARAPET WALL BEYOND
- (KNOX) KEY-BOX AT 6'-0" AFF (IF REQUIRED BY FIRE DEPARTMENT)
- FIRE DEPARTMENT CONNECTION (IF REQUIRED)
- ALUMINUM AWNING WITH SUPPORT RODS ABOVE THE SIDE ENTRY DOOR BY CIRCLE K VENDOR. PROVIDE BLOCKING IN EXTERIOR WALL FOR AWNING AND SUPPORTS
- EMERGENCY FUEL SHUT-OFF SWITCH
- INSULATED METAL DOOR
- NICHHA ESSENTIAL "STARTER" FLASHING
- CO2 TANK WITH METAL LOUVERED CONTAINER
- EXTERIOR FINISH TO EXTEND ABOVE SIDEWALK/GRADE
- CONTROL/EXPANSION JOINT "E.J." LOCATION
- HARDIESOFFIT FIBER CEMENT PANELS
- 8" x 17 1/2" NICHHA PLYMOUTHBRICK HIGH FIBER CEMENT WAINSCOT

FINISH SCHEDULE

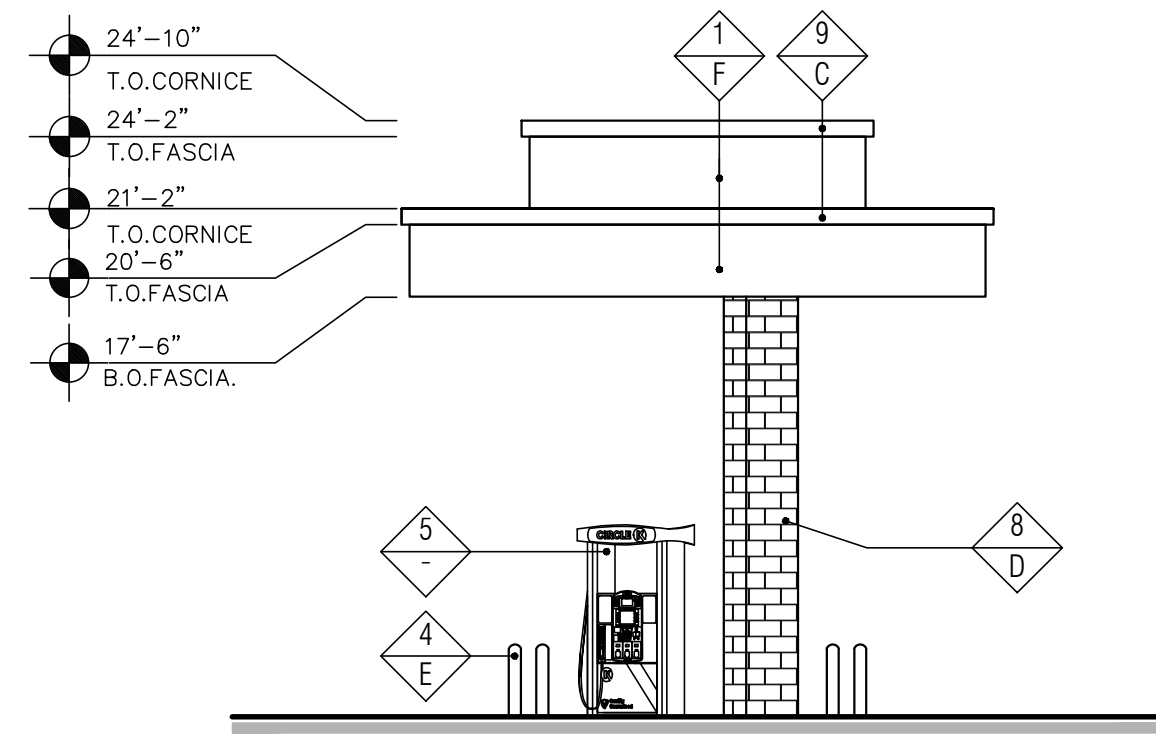
- | | | | |
|---|---------------------------------------------------------------|---|-------------------------------------------------------------------------------------------------------|
| A | ***NICHHA TUFF BLOCK
- COLOR TO MATCH #SW 6095 TOASTY | G | ***NICHHA LEDGESTONE BLUFF |
| B | ***NICHHA TUFF BLOCK
- COLOR TO MATCH #SW 6115 TOTALLY TAN | H | *SHERWIN WILLIAMS #SW 6090 - JAVA
- FIRESTONE MANSARD BROWN SR (USE FOR PRE FINISHED METAL COPING) |
| C | 1" INSULATED, DOUBLE PANED GRAY TINTED GLASS | I | CIRCLE K ORANGE #PMS 144 |
| D | *SHERWIN WILLIAMS #SW 4081
- **SAFETY RED | J | ***NICHHA TUFF BLOCK
- COLOR TO MATCH #SW 4081 |
| E | *SHERWIN WILLIAMS #SW 7005
- CIRCLE K WHITE | K | ***NICHHA CRIMSON PLYMOUTHBRICK |
| F | ***NICHHA CHISELED SILL TAN | | |
- * USE SHERWIN WILLIAMS MANUFACTURER ONLY
** COLOR TO BE PRE-ORDERED TO ENSURE AVAILABILITY AT TIME OF CONSTRUCTION
*** PURCHASED BY CIRCLE K/INSTALLED BY G.C. G.C. TO COORDINATE WITH CIRCLE K PM AND OWNER'S REP
circlek@nichha.com

FRONT ELEVATION (SOUTH)		
FINISH TYPE	AREA	PERCENTAGE
NICHHA WALL PANEL SYSTEM #SW 6115 - TOTALLY TAN	876.4 sq. ft.	34%
NICHHA WALL PANEL SYSTEM #SW 6095 - TOASTY	613.4 sq. ft.	24%
NICHHA WALL PANEL SYSTEM #SW 4081 - SAFETY RED	72 sq. ft.	3%
GLASSING/ STOREFRONT SYSTEM	562.1 sq. ft.	21%
NICHHA KURASTONE, LEDGESTONE BLUFF	273.3 sq. ft.	10%
NICHHA CRIMSON PLYMOUTHBRICK	194 sq. ft.	8%

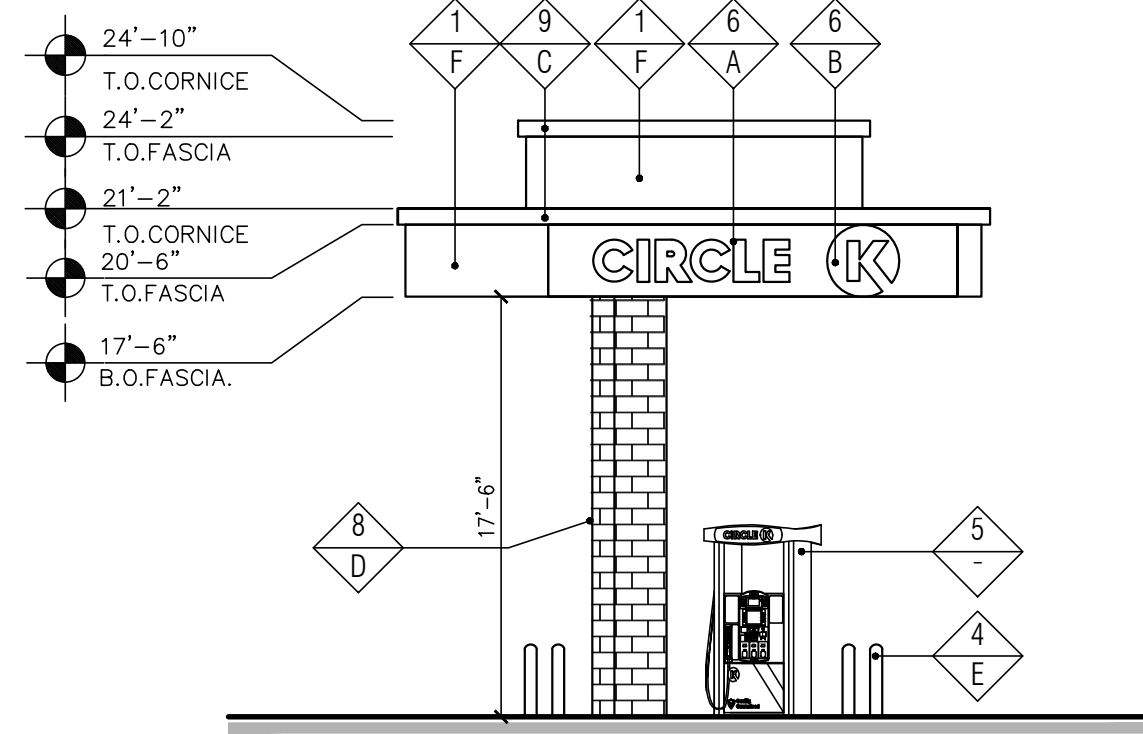
BACK ELEVATION (NORTH)		
FINISH TYPE	AREA	PERCENTAGE
NICHHA WALL PANEL SYSTEM #SW 6115 - TOTALLY TAN	734.9 sq. ft.	30%
NICHHA WALL PANEL SYSTEM #SW 6095 - TOASTY	1064.7 sq. ft.	44%
NICHHA KURASTONE, LEDGESTONE BLUFF	283.2 sq. ft.	12%
NICHHA CRIMSON PLYMOUTHBRICK	350 sq. ft.	14%

SIDE ELEVATION (EAST)		
FINISH TYPE	AREA	PERCENTAGE
NICHHA WALL PANEL SYSTEM #SW 6115 - TOTALLY TAN	236.8 sq. ft.	22%
NICHHA WALL PANEL SYSTEM #SW 6095 - TOASTY	558.1 sq. ft.	50%
METAL DOOR	23.9 sq. ft.	2%
NICHHA KURASTONE, LEDGESTONE BLUFF	93.3 sq. ft.	17%
NICHHA CRIMSON PLYMOUTHBRICK	183.2 sq. ft.	9%

SIDE ELEVATION (WEST)		
FINISH TYPE	AREA	PERCENTAGE
NICHHA WALL PANEL SYSTEM #SW 6115 - TOTALLY TAN	183.8 sq. ft.	17%
NICHHA WALL PANEL SYSTEM #SW 6095 - TOASTY	566.9 sq. ft.	51%
ALUMINUM AWNING #SW 4081 - SAFETY RED	7.3 sq. ft.	1%
GLASSING/ STOREFRONT SYSTEM	48.6 sq. ft.	5%
NICHHA KURASTONE, LEDGESTONE BLUFF	80.1 sq. ft.	7%
NICHHA CRIMSON PLYMOUTHBRICK	201.4 sq. ft.	19%



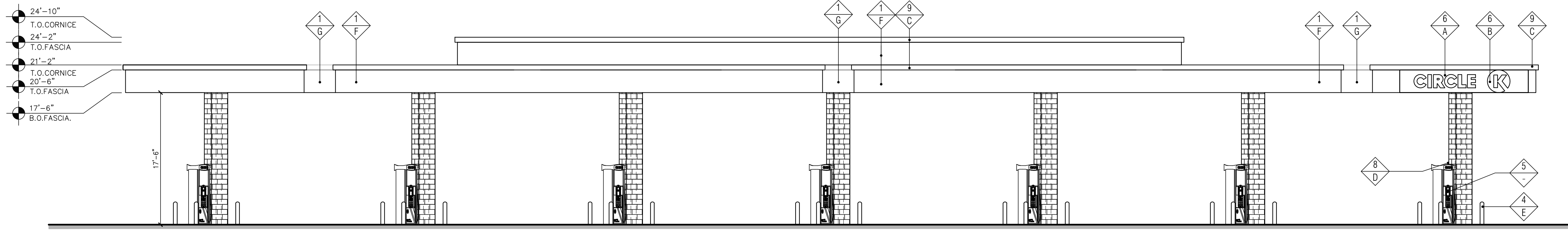
3 "SIDE" ELEVATION (EAST)
SCALE: 1/8" = 1'-0"



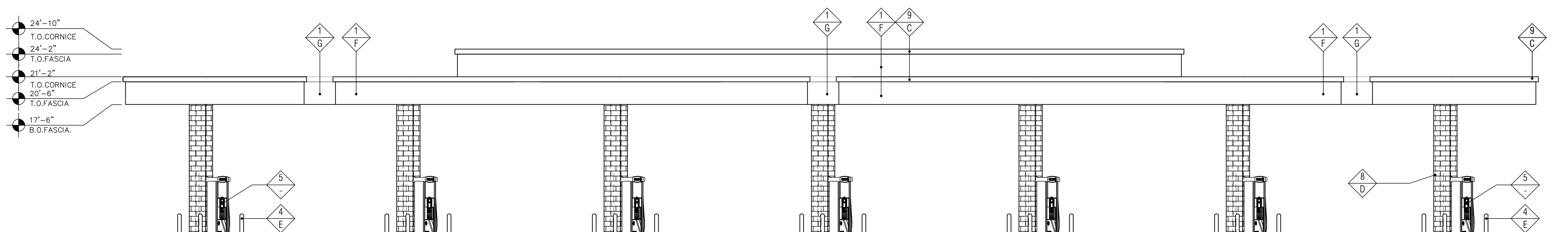
4 "SIDE" ELEVATION (WEST)
SCALE: 1/8" = 1'-0"

FINISH SCHEDULE	
FINISH MATERIAL	
1	ACM PANEL
2	NOT USED
3	NOT USED
4	6" Ø BOLLARD, 36" HIGH
5	FUEL PUMP
6	INTERNALLY ILLUMINATED SIGN UNDER SEPARATE PERMIT
7	NOT USED
8	4X8X16 CMU VENEER, SPLIT FACE, GROUTED TO MATCH CMU COLOR
9	PRE-FINISHED METAL COPING
FINISH COLOR	
A	CIRCLE K RED #PMS 485
B	CIRCLE K WHITE
C	FIRESTONE MANSARD BROWN SR (FOR PRE-FINISHED METAL COPING) OR MATCH SHERWIN WILLIAMS - #SW 6090 - JAVA
D	SUPERLITE BLOCK SPLITFACE CMU - "BOOT BROWN"
E	PVC BOLLARD SLEEVE "DARK GRAY"
F	SHERWIN WILLIAMS - SW6115 - TOTALLY TAN
G	SHERWIN WILLIAMS - SW6095 - TOASTY

Notes:
1. Colors shown on these elevations are for illustration purposes only. For actual colors, refer to manufacturer's samples.
2. The fascia panels are pre-finished by signage vendor.
3. All signs require a separate submittal.
4. All lighting on canopy to be flush mounted with fascia.



2 "FRONT" ELEVATION (SOUTH)
SCALE: 1/8" = 1'-0"



1 "REAR" ELEVATION (NORTH)
SCALE: 1/8" = 1'-0"