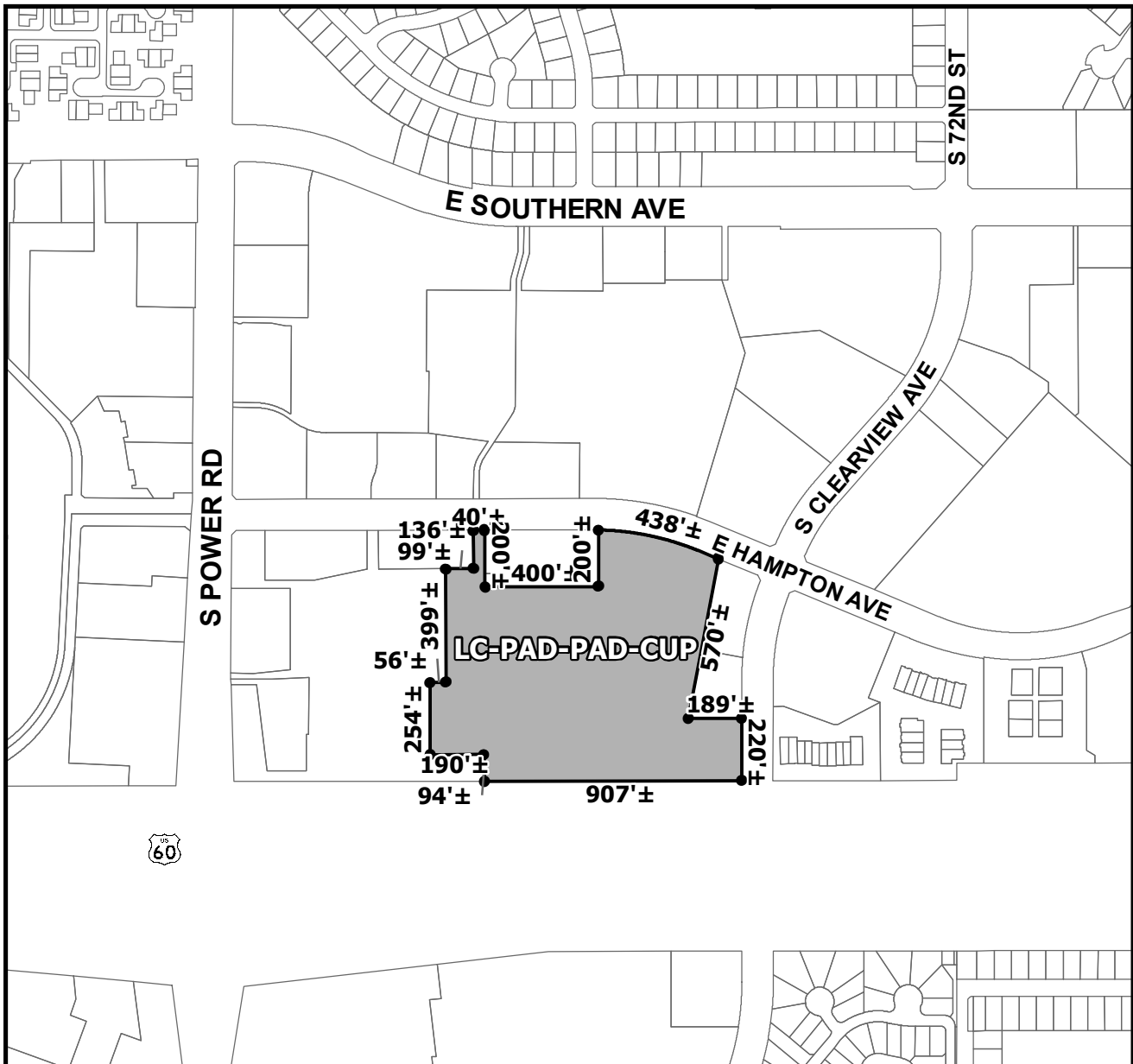




OFFICIAL SUPPLEMENTARY ZONING MAP AMENDING THE CITY OF MESA ZONING MAP



CASE: ZON21-00397

ACREAGE: 17.5±

REQUEST: REZONE FROM LIMITED COMMERCIAL WITH A PLANNED AREA DEVELOPMENT OVERLAY (LC-PAD) TO LIMITED COMMERCIAL WITH A PLANNED AREA DEVELOPMENT OVERLAY (LC-PAD-PAD), COUNCIL USE PERMIT AND SITE PLAN REVIEW.

ORDINANCE: _____

Please be advised that the attached zoning changes were approved by the Mesa City Council on _____, 2021 by Ordinance # _____. If you have any questions concerning these changes, contact the City of Mesa Planning Division at 480-644-2385.

ATTEST: _____ **DATE:** _____

MAYOR

CITY CLERK