



DESIGN REVIEW BOARD

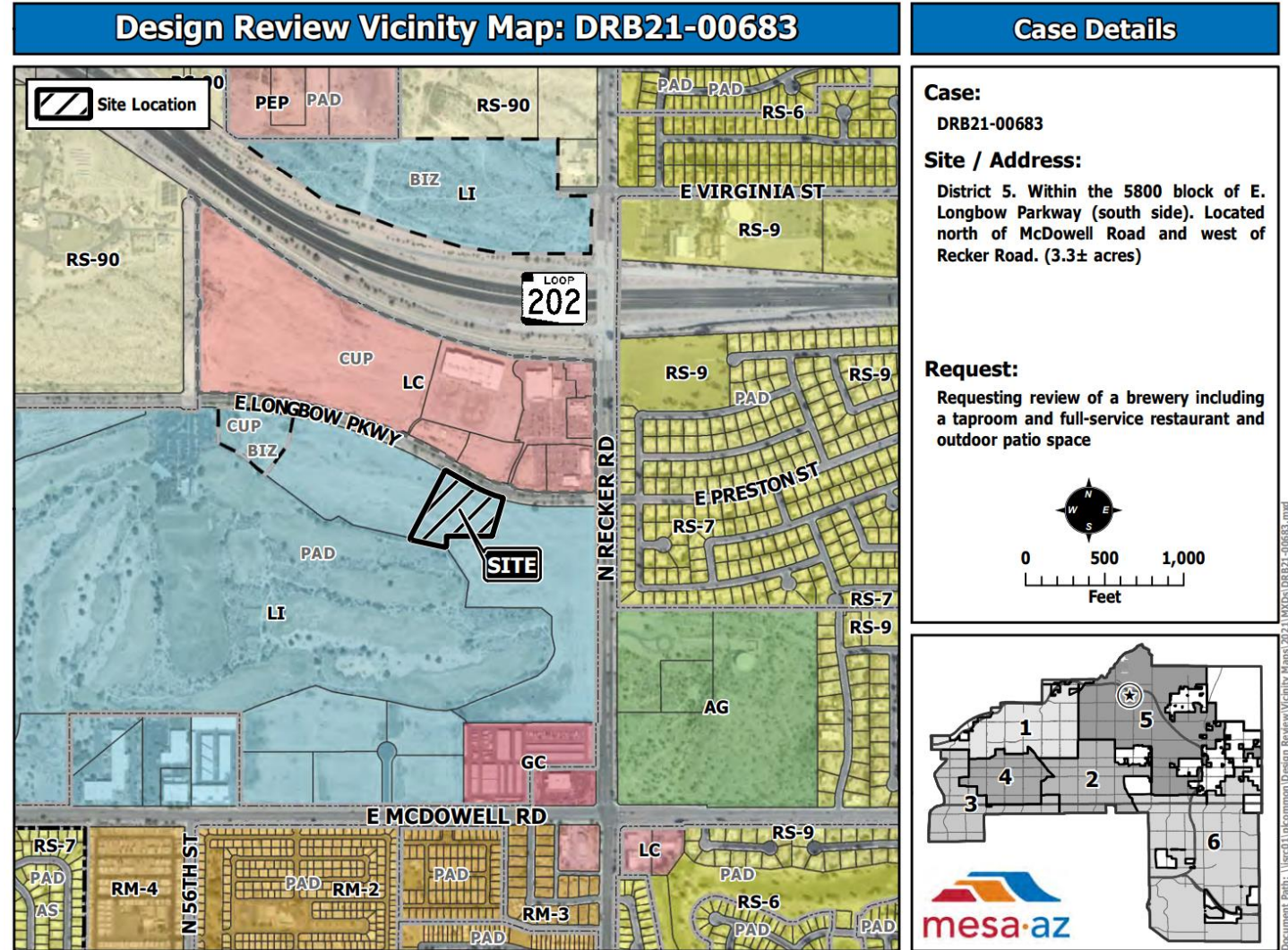
September 14, 2021



DRB21-00683

Location

- Within the 5800 block of E. Longbow Parkway (south side)
- West of N. Recker Road
- North of McDowell





Request

- Design Review

Purpose

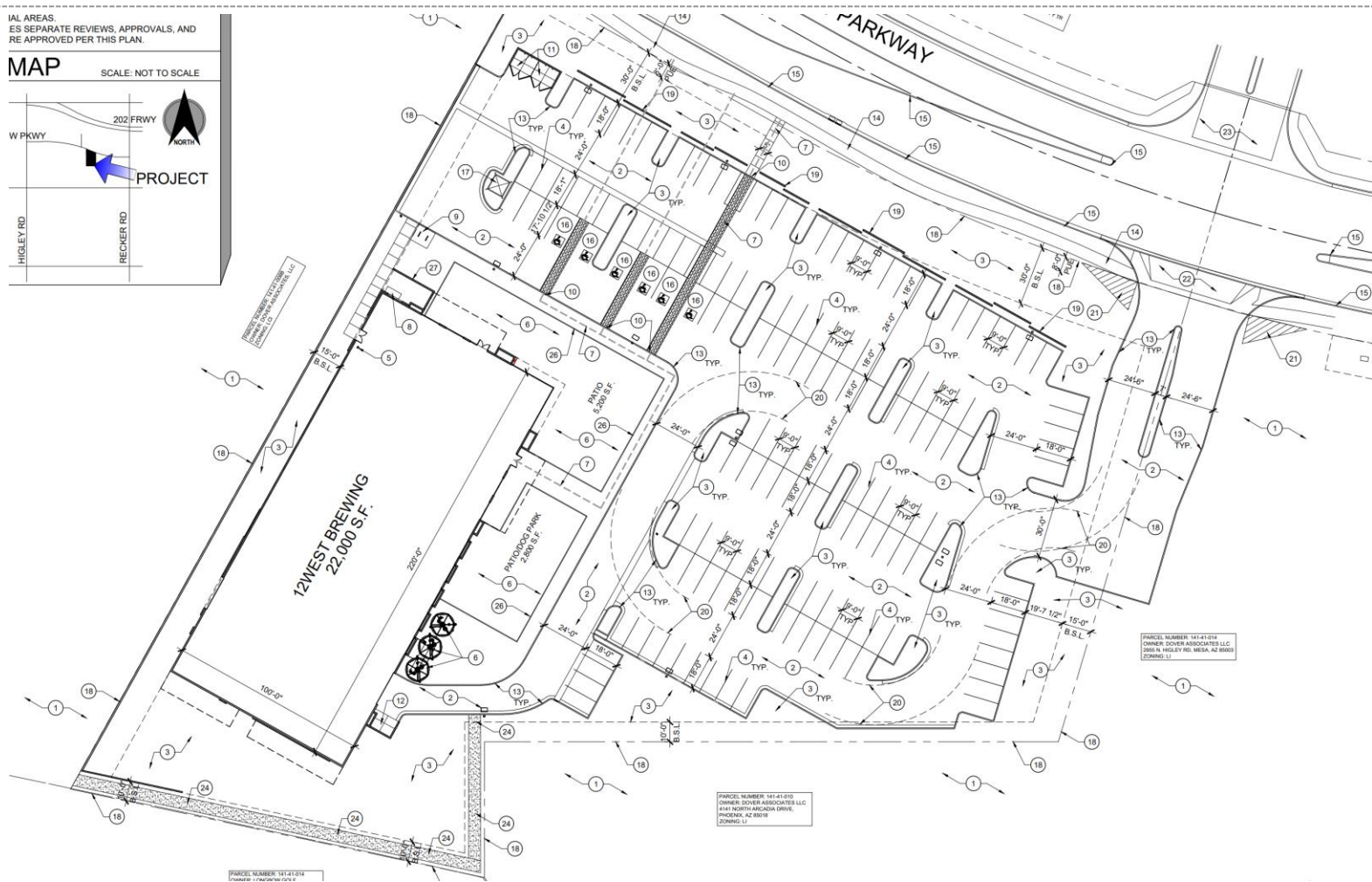
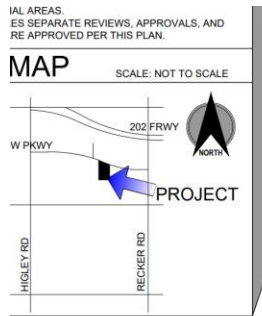
- Proposed brewery with taproom and restaurant

Site Photo



Looking southwest towards the site from E. Longbow Parkway

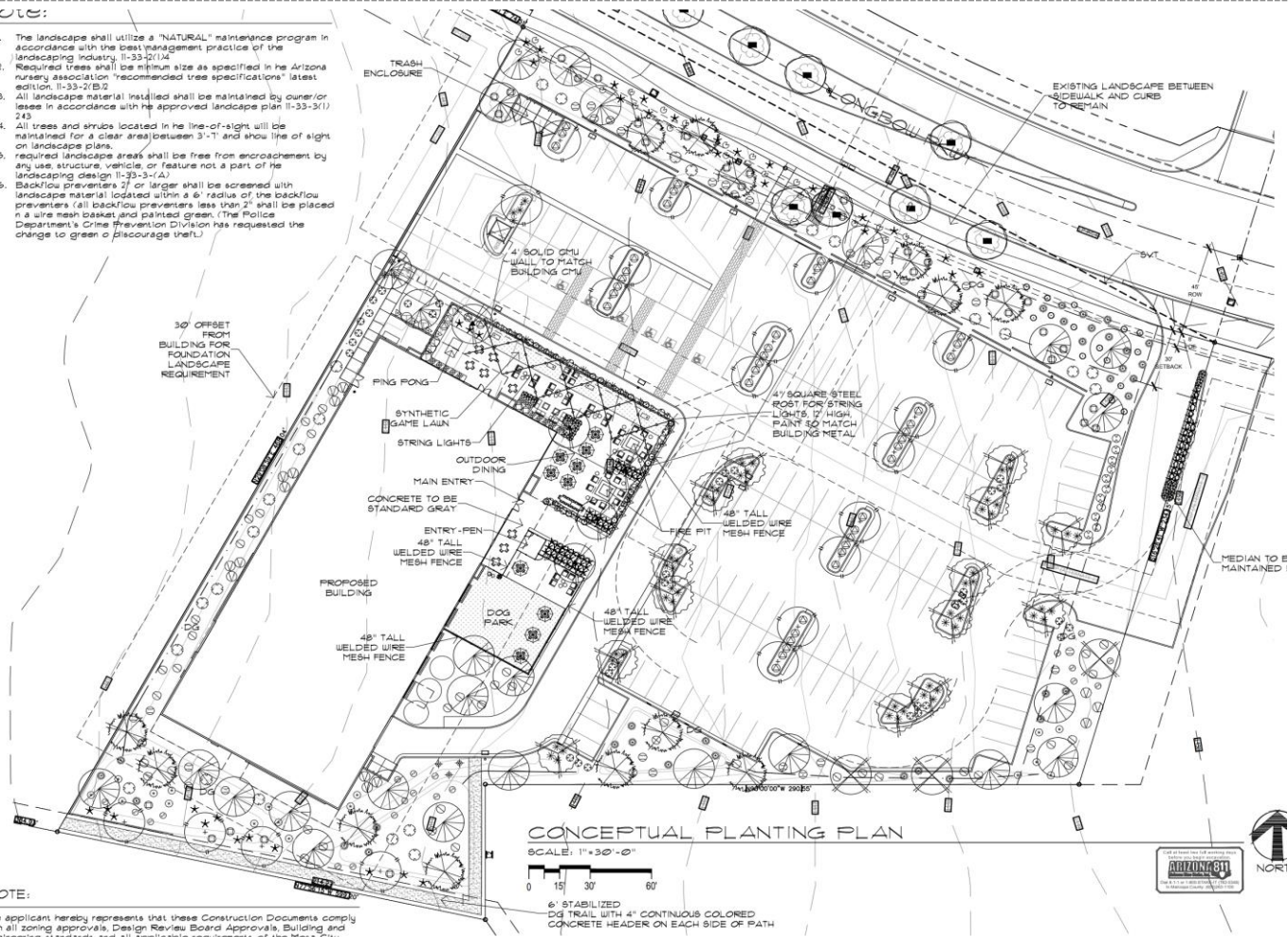
Site Plan



Landscape Plan

NOTE:

1. The landscape shall utilize a "NATURAL" maintenance program in accordance with the best management practice of the landscaping industry II-33-2114.
2. Required trees shall be minimum size as specified in the Arizona nursery association "recommended tree specifications" latest edition, II-33-2152.
3. All landscape material installed shall be maintained by owner or lessee in accordance with the approved landscape plan II-33-3(1) 215.
4. All trees and shrubs located in the line-of-sight will be maintained for a clear area between 3'-1" and show line of sight on landscape plans.
5. Required landscape areas shall be free from encroachment by any use, structure, vehicle, or feature not a part of the landscaping design II-33-3(1) 215.
6. Backflow preventers 2" or larger shall be screened with landscape material located within a 6' radius of the backflow preventers (all backflow preventers less than 2" shall be placed in a wire mesh basket and painted green. (The Police Department's Crime Prevention Division has requested the change to green or discourage them.)



NOTE:

The applicant hereby represents that these Construction Documents comply with all zoning approvals, Design Review Board Approvals, Building and Engineering standards and all applicable requirements of the Mesa City Code. The applicant acknowledges and agrees any deviation from or failure

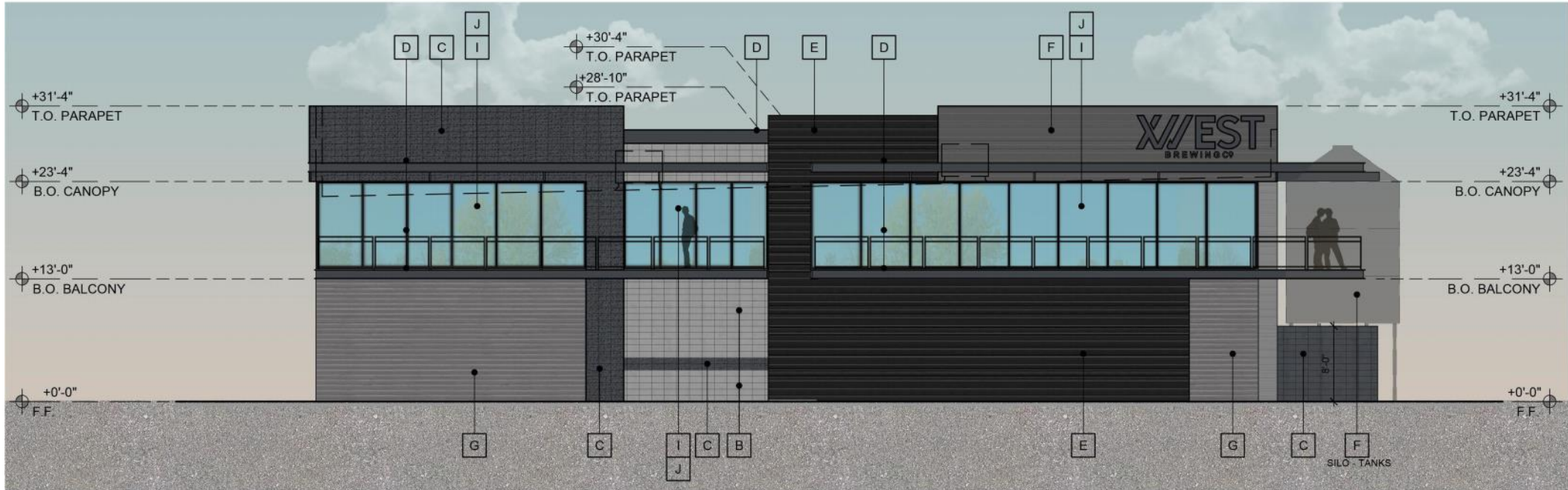
Elevations



MATERIALS AND PERCENTAGES:

- | | | | |
|--|--|---|--|
| <p>A. LIGHT FIXTURE 1 %
COLOR: BLACK</p> <p>B. CMU: 15%
WALL PATTERN: STACK BOND 8" X 16"
COLOR: RUTHERFORD GREY</p> <p>C. CMU: 5%
WALL PATTERN: STACK BOND 8" X 16"
COLOR: OPAL</p> | <p>D. METAL ACCENTS, AWNINGS AND RAILINGS 5%
COLOR: TO MATCH SHERWIN WILLIAMS SW6993
"BLACK OF NIGHT"</p> <p>E. METAL PANEL 15 %
TAYLOR METAL PANEL - SMOOTH WALL
COLOR: GRAPHITE BLACK SRI-26</p> <p>F. METAL PANEL 10%
TAYLOR METAL PANEL - SMOOTH WALL
COLOR: WEATHERED ZINC SRI-39</p> | <p>G. CORRUGATED METAL PANEL 20%
TAYLOR METAL PANEL
COLOR: METALLIC SILVER</p> <p>H. EXTERIOR HOLLOW METAL DOORS AND SES 0 %
PAINT: MATCH ADJACENT WALL/MATERIAL COLOR</p> <p>I. ANODIZED ALUMINUM STOREFRONT SYSTEM 24%
MANUFACT: KAWNEER OR APPROVED EQUAL
COLOR: DARK BRONZE</p> | <p>J. SILO'S 5%
MANUFACTURER: MERIDIAN
COLOR: TO MATCH WEATHERED ZINC SRI-39</p> |
|--|--|---|--|

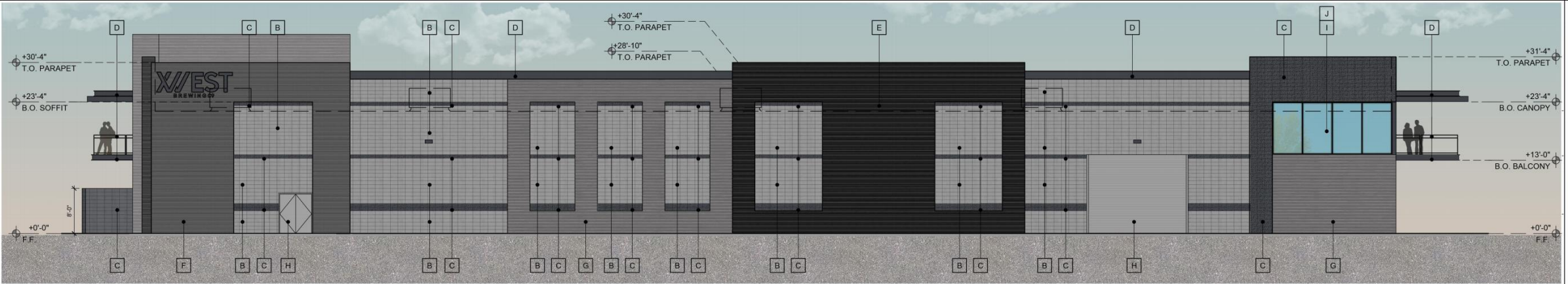
Elevations



MATERIALS AND PERCENTAGES:

- | | | | |
|---|--|---|--|
| <p>A. LIGHT FIXTURE
COLOR: BLACK</p> <p>B. CMU: 15%
WALL PATTERN: STACK BOND 8" X 16"
COLOR: RUTHERFORD GREY</p> <p>C. CMU: 10%
WALL PATTERN: STACK BOND 8" X 16"
COLOR: OPAL</p> | <p>D. METAL ACCENTS, AWNINGS AND RAILINGS 10 %
COLOR: TO MATCH SHERWIN WILLIAMS SW6993
"BLACK OF NIGHT"</p> <p>E. METAL PANEL 15 %
TAYLOR METAL PANEL - SMOOTH WALL
COLOR: GRAPHITE BLACK SRI-26</p> <p>F. METAL PANEL 10%
TAYLOR METAL PANEL - SMOOTH WALL
COLOR: WEATHERED ZINC SRI-39</p> | <p>G. CORRUGATED METAL PANEL 15%
TAYLOR METAL PANEL
COLOR: METALLIC SILVER</p> <p>H. EXTERIOR HOLLOW METAL DOORS AND SES
PAINT: MATCH ADJACENT WALL/MATERIAL COLOR</p> <p>I. ANODIZED ALUMINUM STOREFRONT SYSTEM 20%
MANUFACT: KAWNEER OR APPROVED EQUAL
COLOR: DARK BRONZE</p> | <p>J.</p> <p>K. SILO'S 5%
MANUFACTURER: MERIDIAN
COLOR: TO MATCH WEATHERED ZINC SRI-39</p> |
|---|--|---|--|

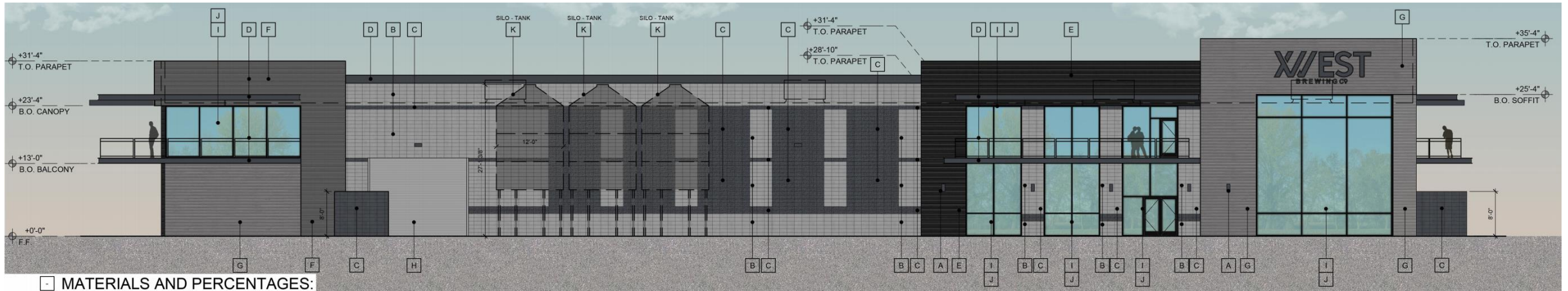
Elevations



MATERIALS AND PERCENTAGES:

- A. LIGHT FIXTURE
COLOR: BLACK
- B. CMU: 40 %
WALL PATTERN: STACK BOND 8" X 16"
COLOR: RUTHERFORD GREY
- C. CMU: 15 %
WALL PATTERN: STACK BOND 8" X 16"
COLOR: OPAL
- D. METAL ACCENTS, AWNINGS AND RAILINGS 5 %
COLOR: TO MATCH SHERWIN WILLIAMS SW6993
"BLACK OF NIGHT"
- E. METAL PANEL 10 %
TAYLOR METAL PANEL - SMOOTH WALL
COLOR: GRAPHITE BLACK SRI-26
- F. METAL PANEL 15 %
TAYLOR METAL PANEL - SMOOTH WALL
COLOR: WEATHERED ZINC SRI-39
- G. CORRUGATED METAL PANEL 10%
TAYLOR METAL PANEL - GR-7
COLOR: METALLIC SILVER
- H. EXTERIOR HOLLOW METAL DOORS AND SES 2.5 %
PAINT: MATCH ADJACENT WALL/MATERIAL COLOR
- I. ANODIZED ALUMINUM STOREFRONT SYSTEM 2.5 %
MANUFACT: KAWNEER OR APPROVED EQUAL
COLOR: DARK BRONZE
- J.
- K. SILO'S
MANUFACTURER: MERIDIAN
COLOR: TO MATCH WEATHERED ZINC SRI-39

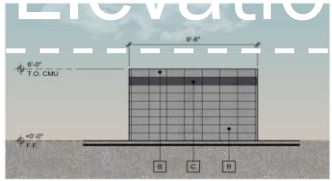
Elevations



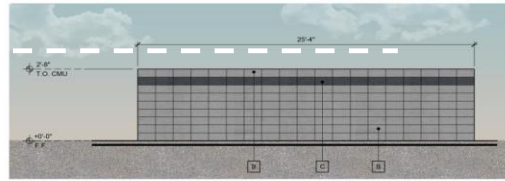
MATERIALS AND PERCENTAGES:

- | | | | |
|--|--|--|--|
| <p>A. LIGHT FIXTURE 1 %
COLOR: BLACK</p> <p>B. CMU: 20 %
WALL PATTERN: STACK BOND 8" X 16"
COLOR: RUTHERFORD GREY</p> <p>C. CMU: 5 %
WALL PATTERN: STACK BOND 8" X 16"
COLOR: OPAL</p> | <p>D. METAL ACCENTS, AWNINGS AND RAILINGS 5 %
COLOR: TO MATCH SHERWIN WILLIAMS SW6993
"BLACK OF NIGHT"</p> <p>E. METAL PANEL 10 %
TAYLOR METAL PANEL - SMOOTH WALL
COLOR: GRAPHITE BLACK SRI-26</p> <p>F. METAL PANEL 10 %
TAYLOR METAL PANEL - SMOOTH WALL
COLOR: WEATHERED ZINC SRI-39</p> | <p>G. CORRUGATED METAL PANEL 15 %
TAYLOR METAL PANEL - GR-7
COLOR: METALLIC SILVER</p> <p>H. EXTERIOR HOLLOW METAL DOORS AND SES 4 %
PAINT: MATCH ADJACENT WALL/MATERIAL COLOR</p> <p>I. ANODIZED ALUMINUM STOREFRONT SYSTEM 20 %
MANUFACT: KAWNEER OR APPROVED EQUAL
COLOR: DARK BRONZE</p> | <p>J. SILO'S 10 %
MANUFACTURER: MERIDIAN
COLOR: TO MATCH WEATHERED ZINC SRI-39</p> <p>K. SILO - TANK 10 %
MANUFACTURER: MERIDIAN
COLOR: TO MATCH WEATHERED ZINC SRI-39</p> |
|--|--|--|--|

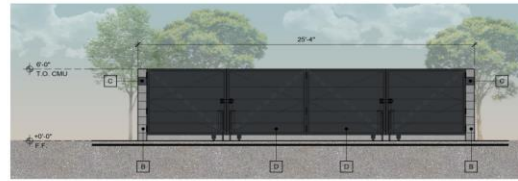
Site Details



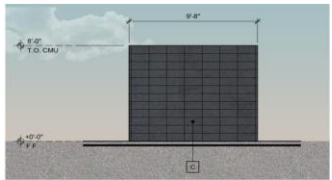
REFUSE ENCLOSURE ELEVATION - ELEV. 'B'



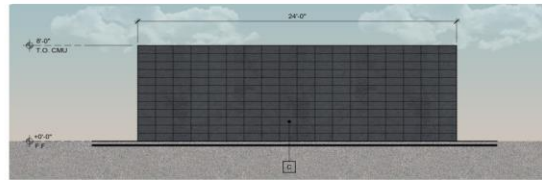
REFUSE ENCLOSURE ELEVATION - ELEV. 'C'



REFUSE ENCLOSURE ELEVATION - ELEV. 'A'

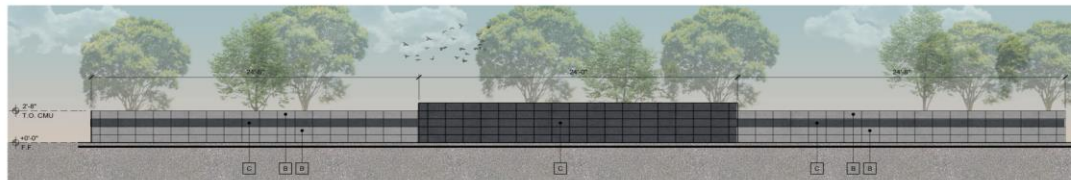


OUTDOOR AREA 1



OUTDOOR AREA 2

FINISH KEYNOTES:	
B.	CMU: MESASTONE - OLD CASTLE SUPERLITE - ECHELON - TRENWYTH WALL PATTERN: STACK BOND 8" x 16" COLOR: RUTHERFORD GREY
C.	CMU: MESASTONE - TRENWYTH INDUSTRIES, INC. WALL PATTERN: STACK BOND 8" x 16" COLOR: OFFICE
D.	METAL ACCENTS, ARMINIS AND RAILINGS COLOR: TO MATCH SHERWIN WILLIAMS SW9993 "BLACK OF NIGHT"



SCREEN WALL

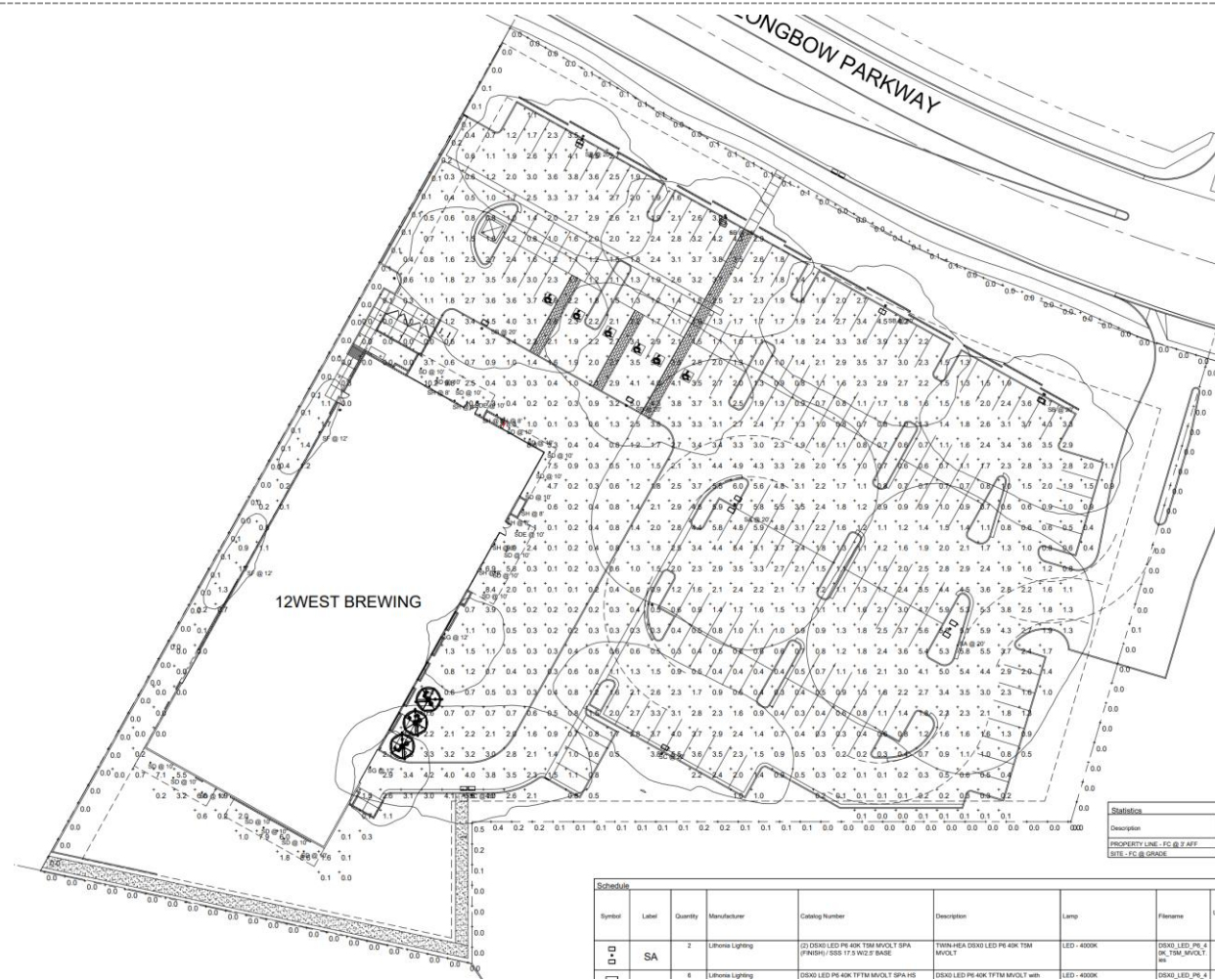
Color and Material Board



Materials

- Concrete Masonry
- Architectural Metals
- Glazing

Lighting



Lighting



AQUA 400 ROUND LX SCENCE

PROJECT

Job _____

Type _____

Part # _____

Notes _____

SPECIFICATIONS

Source Xicato XTM LED module - up to 4000 source lumens
CCT 2700K, 3000K, 3500K or 4000K
Color Constancy 1x2 SDCM (MacAdam) along BBL, CCT +/- 40K to 70K, Duv +/- .001
CRI (Ra) 83 or 98
Driver / Location Integral / premium drivers must be remote mounted
Dimming 0-10V or phase to 10% standard; Ecosystem, DALI, DMX and 1% available
Input Voltage 100 to 277VAC (347VAC consult factory), phase dimmable versions are 120VAC only
Power Up to 60 watts max, depending on LED module / driver
Reflector 8", 13", 20", 40", 60", 83" & optical accessories
Materials Tamper resistant design, stainless steel hardware, metal reflectors
Finish Powder coat - Exterior grade TGIC polyester, optional marine-grade finish
Weight 12.2 lb. [5.5 kg]
Location Listed for Wet location, tested to IP66 per IEC 60529
Approvals ETL Listed to UL 1598, 2108, 8750 and CSA C22.2# 9 & #250.0
L70 Life > 55,000 hours at 70% lumen maintenance, LM80 / TM-21, see pg 2
Warranty Lifetime Limited Warranty - see warranty for details
IES Files LM-79-04 IES files available
Modifications Any modification or customization is possible - consult factory



ORDERING LOGIC

Model	Driver Location	Dimming	Output Direction	Output	CRI	CCT	Reflector	Optical Accessory	Shell Color
KARL	N=Integrated R=Remote	N=None P=Phase, 10% U=Up *	D=Down U=Up *	07-700 lm 10-965 lm 13-1300 lm 20-2000 lm 30-3000 lm* 40-4000 lm*	83-83 98-98	27-2700K 30-3000K 35-3500K 40-4000K	08-08" 13-13" 20-20" 40-40" 60-60" 83-83"	NN=None DF=Diffuser Lens LS=Spread Lens WW=Wall Wash FF=Forward Throw HL=Hex Louver	XX=2 color see pg 4 ZZ=Custom add +MF for Marine Finish

*available in 83CRI only
 *2000lm 83CRI *down direction only or 1300lm 98 CRI max

Example Part Number: **KARL-NVD-3083Z720NN-L1**
K AQUA 400 Round LX Scence - Integrated Driver, 0-10V Dim - Down, 3000lm, 83CRI, 2700K, 20", **NN** No Accessory - L1 Glass White

A 1035 22nd Avenue, Unit 1 - Oakland, CA 94606 P 510.489.2530 E TalkToUs@alwusa.com W alwusa.com 1
 rev. 191209



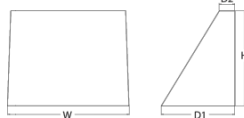
WDGE2 LED

Architectural Wall Scence
Precision Reflective Optic



Specifications

Depth (D1): 7"
Depth (D2): 1.5"
Height: 9"
Width: 11.5"
Weight: 13.5 lbs (without options)



Catalog Number _____

Notes _____

Type _____

Hit the TAB key or mouse over the page to see all interactive elements.

Introduction

The WDGE2 family is designed to meet specifier's every wall-mounted lighting need in a widely accepted shape that blends with any architecture. The clean rectilinear design comes in four sizes with lumen packages ranging from 1,200 to 25,000 lumens, providing a true site-wide solution. Embedded with rLight® AIR wireless controls, the WDGE2 family provides additional energy savings and code compliance. WDGE2 with industry leading precision reflective optics provides great uniform distribution and optical control. When combined with multiple integrated emergency battery backup options, including an 18W cold temperature option, the WDGE2 becomes the ideal wall-mounted lighting solution for pedestrian scale applications in any environment.

WDGE LED Family Overview

Luminaire	Optics	Standard LxL, 0°C	Cold LxL, 20°C	Sensor	Approximate Lumens @ 4000K, 50% RH								
					P0	P1	P2	P3	P4	P5	P6		
WDGE2 LED	Visual Comfort	4W			750	1,200	2,000						
WDGE2 LED	Visual Comfort	10W	18W	Standalone / rLight		1,200	2,000	3,000	4,500	6,000			
WDGE2 LED	Precision Reflective	10W	18W	Standalone / rLight	700	1,200	2,000	3,200	4,200				
WDGE2 LED	Precision Reflective	15W	18W	Standalone / rLight		7,500	8,500	10,000	12,000				
WDGE4 LED	Precision Reflective			Standalone / rLight		12,000	16,000	18,000	20,000	22,000	25,000		

Ordering Information

EXAMPLE: WDGE2 LED P3 40K 80CRI VV FV MVOLT SRM DDBXO

Series	Packages	Color Temperature	LED	Distribution	Voltage	Mounting	Shipped separately
WDGE2 LED	P0 ¹ P1 ¹ P2 ² P3 ² P4 ²	27K 2700K 30K 3000K 40K 4000K 50K 5000K AMB Amber	70CR1 ¹ 80CRI LW Limited Wavelength	T15 Type I Short T2M Type II Medium T4M Type IV Medium TFTM Forward Throw Medium	MVOLT 347 ² 480 ²	SRM Surface mounting bracket ICW Indirect Canopy/Ceiling Washer bracket (dry/damp locations only)	AWS 3/8inch Architectural wall spacer PBWV Surface-mounted back box (top, left, right conduit entry). Use when there is no junction box available.

Options	Finish
E10WH Emergency battery backup, Certified in CA Title 20 MAERDS (10W, 5% min)	D0BRZ Dark bronze
E20WC Emergency battery backup, Certified in CA Title 20 MAERDS (10W, 2% min)	D0BLK Black
PE² Photocell, Button Type	D0ALU Natural aluminum
DMG² 0-10V dimming wires pulled outside fixture (for use with an external control, ordered separately)	D0WHT White
KCE Bottom conduit entry for back box (PBWV). Total of 4 entry points.	D0SDS Sandstone
	D0BRZ Textured dark bronze
	D0BLK Textured black
	D0ALU Textured natural aluminum
	D0WHT Textured white
	D0STD Textured sandstone

LITHONIA LIGHTING COMMERCIAL OUTDOOR One Lithonia Way • Conyers, Georgia 30012 • Phone: 1-800-705-SERV (7378) • www.lithonia.com WDGE2 LED Rev. 08/05/21

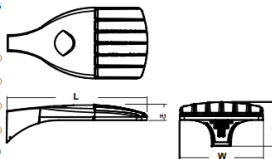


D-Series Size 0 LED Area Luminaire



Specifications

EPA: 0.95 ft2 (0.09 m²)
Length: 26" (66.0 cm)
Width: 13" (33.0 cm)
Height: 3" (7.62 cm)
Height2: 7" (17.78 cm)
Weight: 16 lbs (7.25 kg) (max)



Catalog Number _____

Notes _____

Type _____

Hit the TAB key or mouse over the page to see all interactive elements.

Introduction

The modern styling of the D-Series is striking yet unobtrusive - making a bold, progressive statement even as it blends seamlessly with its environment. The D-Series distills the benefits of the latest in LED technology into a high performance, high efficacy, long-life luminaire. The outstanding photometric performance results in sites with excellent uniformity, greater pole spacing and lower power density. It is ideal for replacing up to 40W metal halide with typical energy savings of 70% and expected service life of over 100,000 hours.



FEATURES & SPECIFICATIONS

INTENDED USE - Typical applications include corridors, lobbies, conference rooms and private offices.
CONSTRUCTION - Galvanized steel mounting bracket frame; galvanized steel junction box with bottom-merged access covers and spring latches. Reflectors are retained by tension springs.
 Vertically adjustable mounting brackets with commercial bar hangers provide 3-1/4" total adjustment. Two combination 1/2"-3/4" and four 1/2" knockouts for straight through conduit run. Capacity: 8 ft. 4 in. 4 out. No. 12 AWG conductors, rated for 90°C.
 Accommodates 12" x 24" junction boxes.
 Passive cooling/thermal management for 25°C standard, high ambient (40°C) option available. Light engine and driver are accessible from above without cutting.
 Max ceiling thickness 1-1/2".
OPTICS - LEDs are fitted to a 3-step 300:80:80 CRI minimum, 90-CRI optional.
 LED light source concealed with diffusing optical lens.
 General illumination lighting with 1.0 S/M and 52° cutoff to source and source image.
 Self-fanged standard reflectors in optional, semi-specular, or matte diffuse finishes. Also available in white and black painted reflectors.
ELECTRICAL - Multi-volt (120-277V, 50/60Hz) 0-10V dimming drivers mounted to junction box, 10% or 1% minimum dimming level available.
 0-10V dimming fixture requires two (2) additional low-voltage wires to be pulled.
 70% lumen maintenance at 60,000 hours.
LISTINGS - Certified to US and Canadian safety standards. Wet location standard (covered ceiling). IP55 rated. ENEC® 334P² certified product.
BUY AMERICAN - Product with the BAA option is assembled in the USA and meets the Buy American (BA) government procurement requirements under FAR, DFARS and DOT. Please refer to www.aculithon.com/buy-american for additional information.
WARRANTY - 5 year limited warranty. Complete warranty terms located at: www.aculithon.com/resources/warranty-terms-and-conditions
Note: Actual performance may differ as a result of end-user environment and application.
 All values are design or typical values, measured under laboratory conditions at 25 °C.
 Specifications subject to change without notice.



LDN6

6" Open and Wall/Wash LED Non-IC New Construction Downlight

Example: LDN6 35/15 LOGAR LSS MVOLT E210

Series	Color temperature	Lumens ¹	Aperture/Trim Color	Finish	Voltage
LDN6 6" round	27/ 2700K 30/ 3000K 35/ 3500K 40/ 4000K 50/ 5000K	05 500 lumens 07 750 lumens 10 1000 lumens 15 1500 lumens 20 2000 lumens	25 2500 lumens 30 3000 lumens 40 4000 lumens 50 5000 lumens	L06 Downlight LW6 Wallwash AR Clear WR1 White BR1 Black	LSS Semi-specular LD Matte diffuse LS Specular MVOLT Multi-volt 120 120V 277 277V 347 ¹ 347V

Summary

Findings

- ✓ Design incorporates multiple materials
- ✓ Exterior walls are subdivided through changes in building material, awnings, and glazing
- ✓ Vertical modulation is provided every 100 linear feet for each façade
- ✓ No more than 50% of each façade is covered with a single material
- ✓ Architecture complies with the adopted Design Guidelines for the Longbow Business Park
- Staff welcomes any feedback



DESIGN REVIEW BOARD

September 14, 2021