



DESIGN REVIEW BOARD

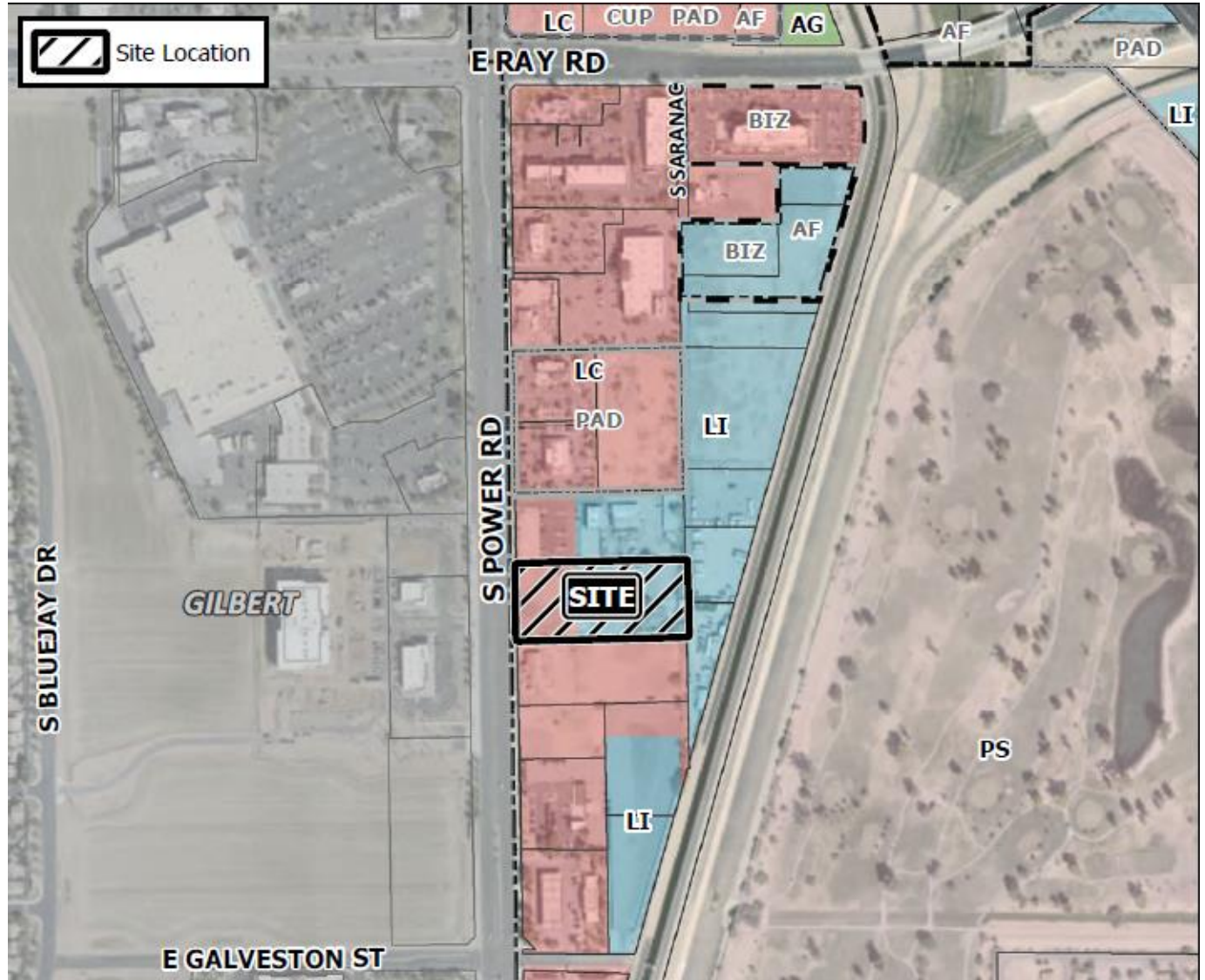
September 14, 2021



DRB21-00447

Location

- East side of Power Rd
- ¼ mile south of Ray Rd





Request

- Design Review

Purpose

- Proposed restaurant with a drive thru

Street View



Looking East from Power Road

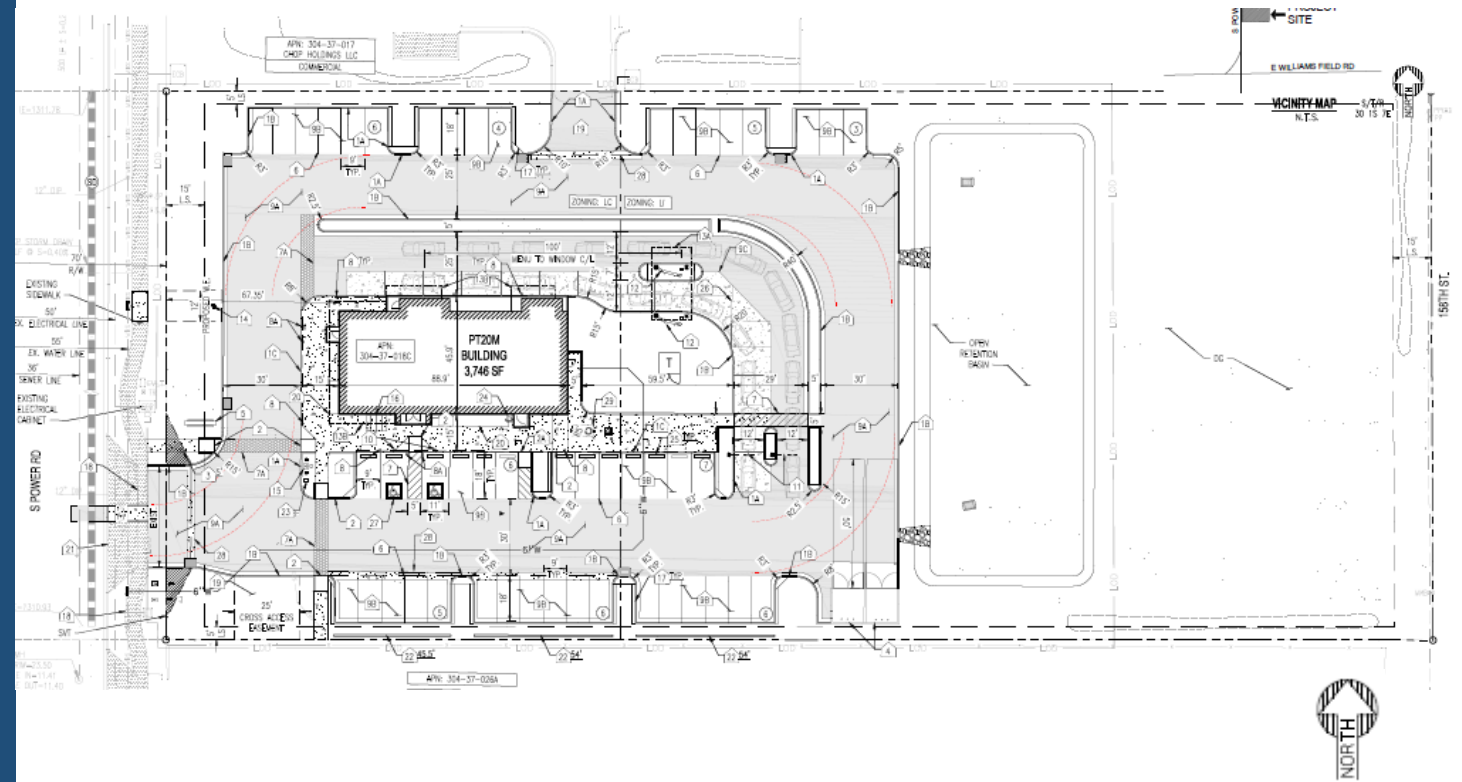
Street View



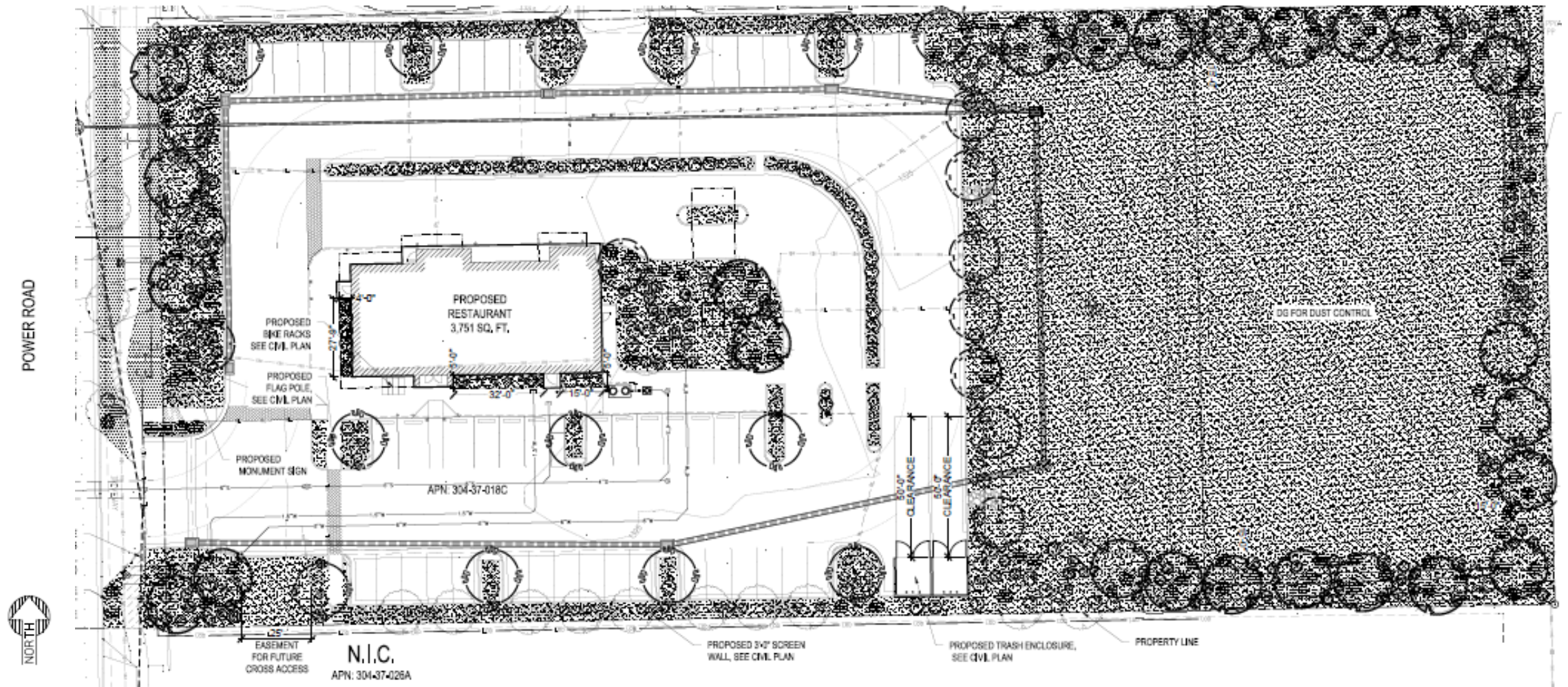
Looking South from adjacent developed property to the north

Site Plan

- Existing unoccupied house to be demolished
- 3,746 SF restaurant with double drive-thru



Landscape Plan



Landscape Palette

PLANTING MATERIAL LEGEND



TREES	SIZE	NOTES	QTY
Pistacia atlantica x integririma 'Red Push' Pistache Caliper Size: 1.5"	24" Box H 9' W 3.5'	*ADWR	25



Acacia salicina Willow Leaf Acacia Caliper Size: 1.5"	24" Box H 8' W 3.5'	Multi *ADWR	13
---	------------------------	----------------	----



Chilopsis linearis Desert Willow Caliper Size: 2.0"	36" Box H 9' W 6'	*ADWR	12
---	----------------------	-------	----



Vitex agnus-castus Chaste Tree Caliper Size: 1.5"	24" Box H 7' W 4'	*ADWR	21
---	----------------------	-------	----

GROUNDCOVERS



Lantana montevidensis Trailing Lantana 'Purple'	5 Gallon	*ADWR	114
--	----------	-------	-----



Convolvulus mauritanicus Ground Morning Glory	5 Gallon	*ADWR	64
--	----------	-------	----

SHRUBS / ACCENTS



Ruellia californica Baja Ruellia	5 Gallon	*ADWR	72
-------------------------------------	----------	-------	----



Eremophila hygrophana Blue Bells	5 Gallon	*ADWR	142
-------------------------------------	----------	-------	-----



Muhlenbergia rigens Deer Grass	5 Gallon	*ADWR	76
-----------------------------------	----------	-------	----



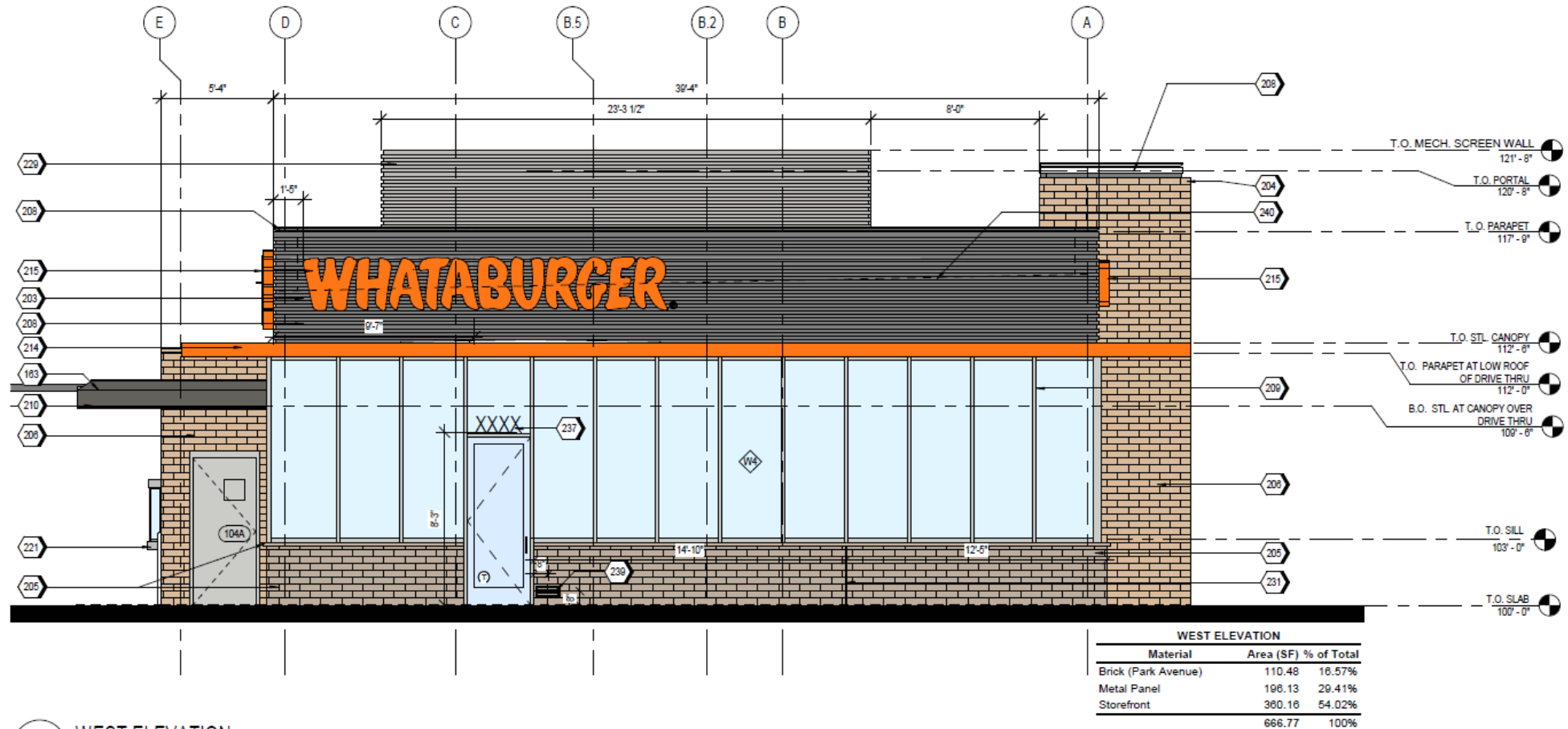
Hesperaloe parviflora Red Yucca	5 Gallon	*ADWR	85
------------------------------------	----------	-------	----

LANDSCAPE MATERIALS



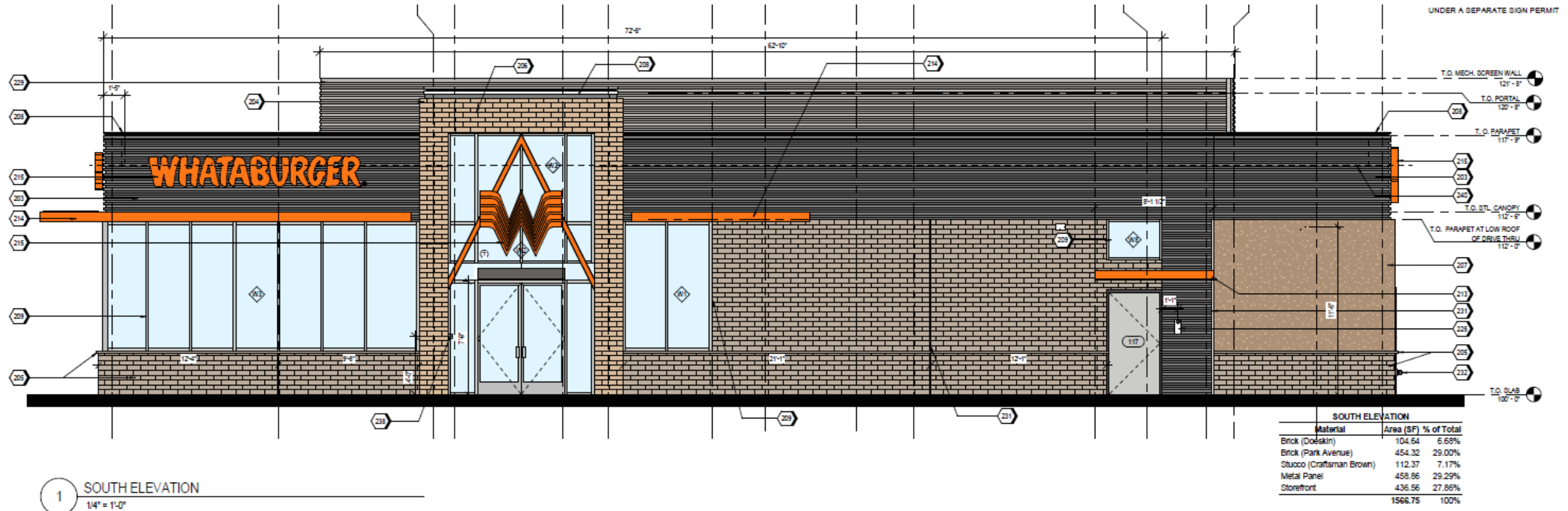
Decomposed Granite. 3/4" minus, Express Gold 2" deep in planting areas per plan.	60,100 sq.ft.
--	---------------

West Elevation (facing Power Rd)

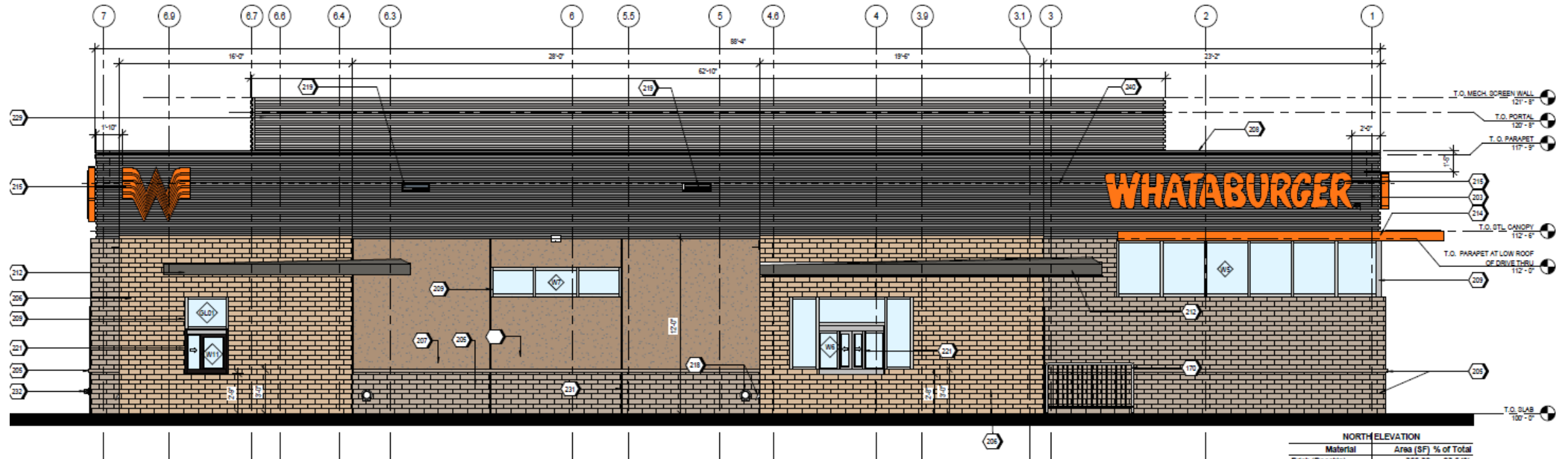


2 WEST ELEVATION
1/4" = 1'-0"

South Elevation

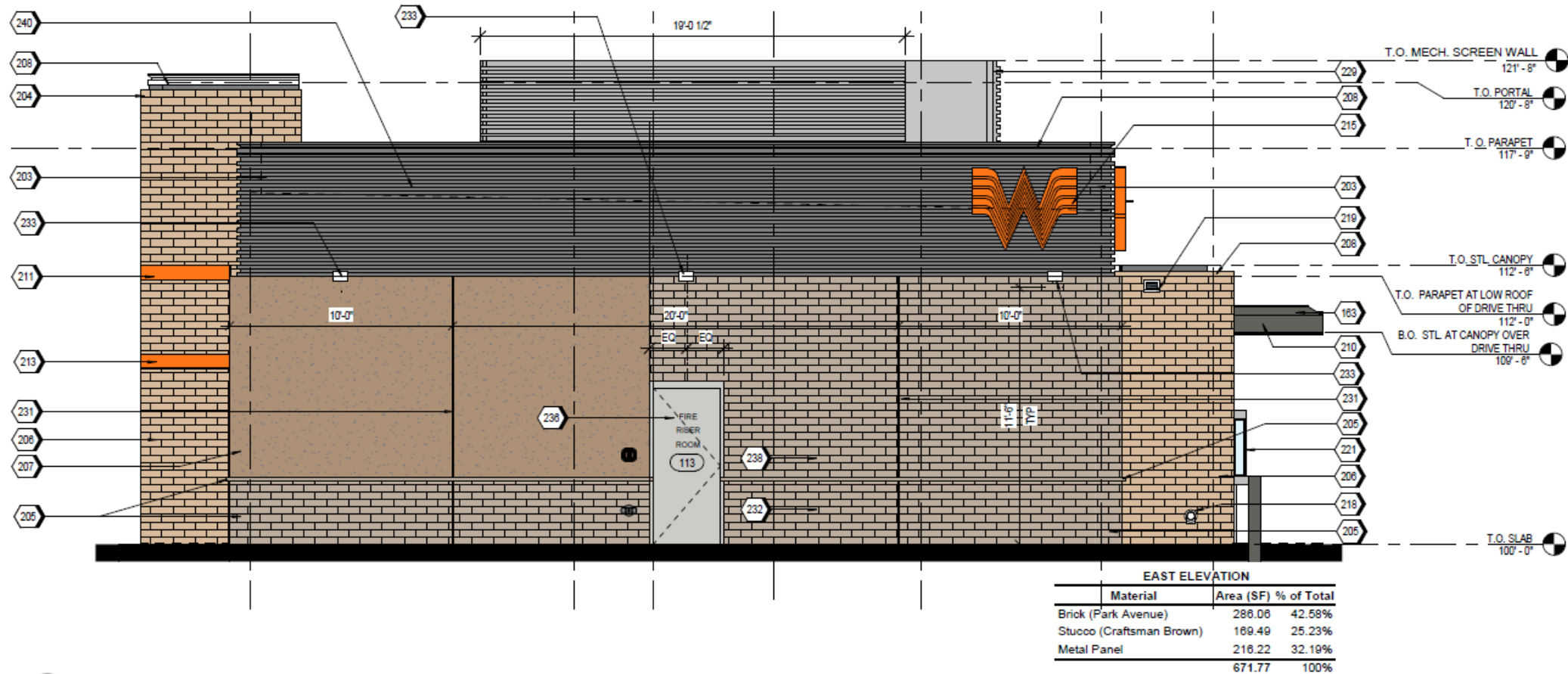


North Elevation



2 NORTH ELEVATION
1/4" = 1'-0"

East Elevation



1

EAST ELEVATION

1/4" = 1'-0"

Material Board

BR-01



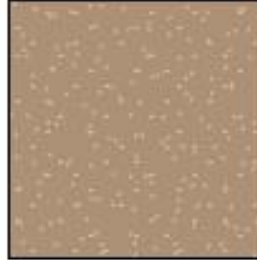
BRICK VENEER
ACME, PARK AVENUE
HERITAGE TEXTURE
BLEND: DTP114

BR-02



BRICK VENEER
ACME, DOESKIN
HERITAGE TEXTURE
BLEND: DT114

ST-01



STUCCO
MANUFACTURER: SHERWIN
WILLIAMS
COLOR: SW 2830 CRAFTSMAN
BROWN

SS-01



STOREFRONT SYSTEM
BERRIDGE
COLOR: OLD CASTLE
STYLE: FG-3000
FINISH: ALUMINUM

MP-01
MP-02
MC-01
MS-01



METAL PANELS
BERRIDGE
COLOR: LEAD-COTE
STYLE: MATRIX MX 1.0
FINISH: ALUMINUM

PT-5



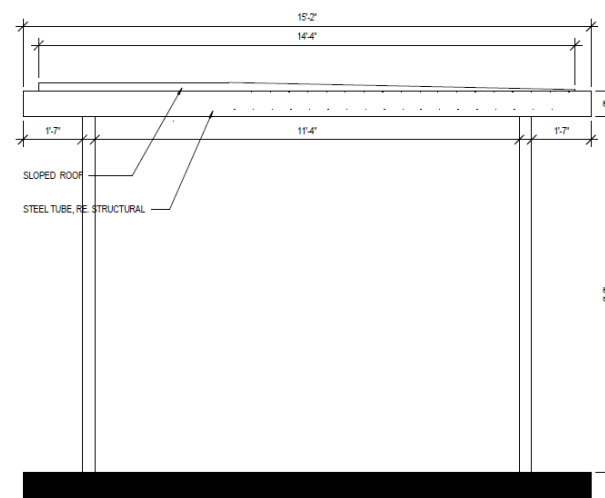
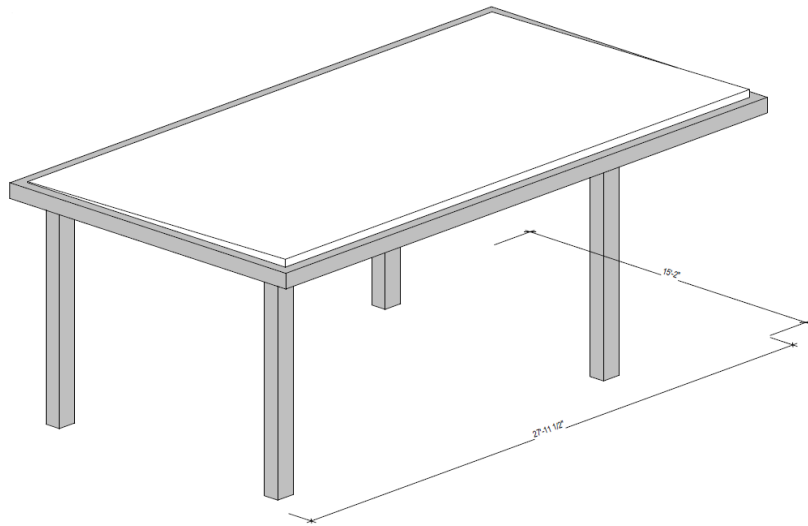
PAINT
MANUFACTURER:
SHERWIN WILLIAMS
COLOR: SW 6277 SPECIAL
GRAY

PT-6

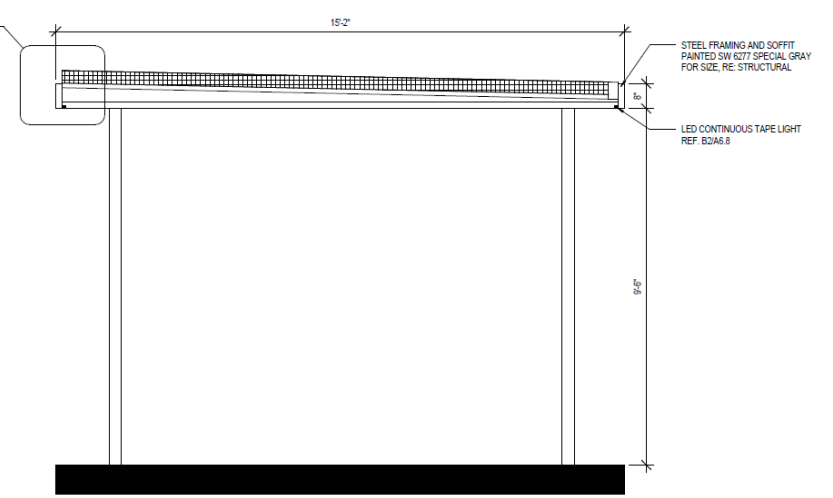


PAINT
MANUFACTURER: SHERWIN
WILLIAMS
COLOR: SW 7048 URBAN
BRONZE

Drive-thru Canopy Details

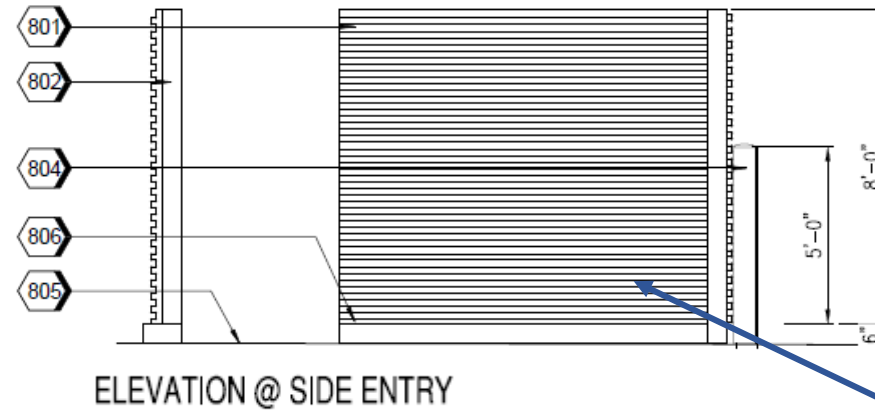
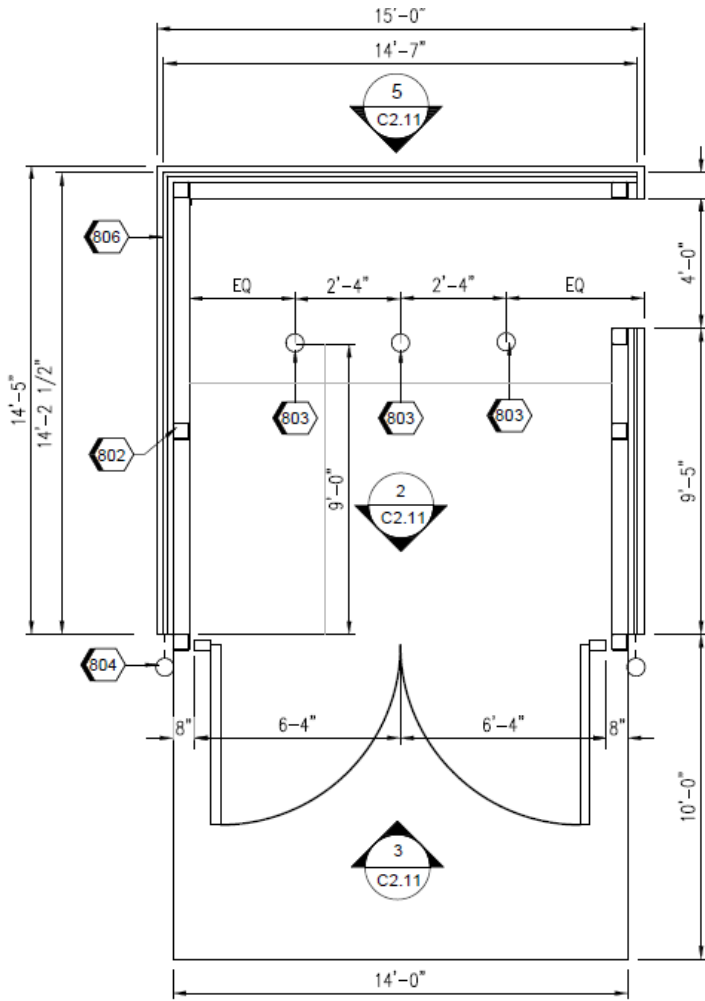


C2 DRIVE THRU CANOPY - SIDE ELEVATION.
SCALE 1/2" = 1'-0"

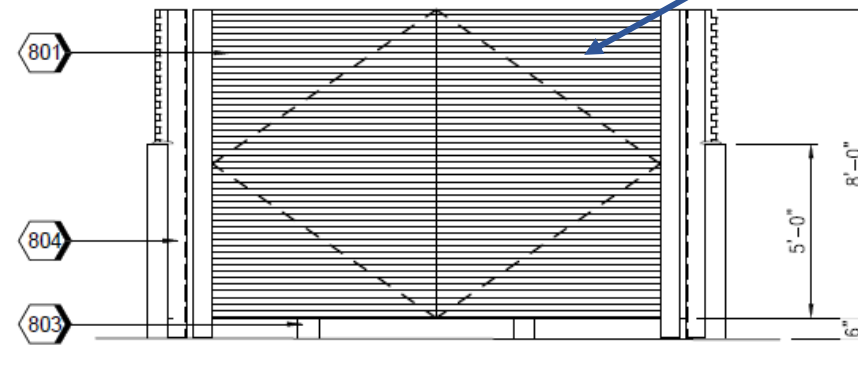


C1 DRIVE THRU CANOPY-SECTION 1.
SCALE 1/2" = 1'-0"

Solid Waste Enclosure Details



ELEVATION @ GATE



801: Pre-finished corrugated metal panel

Lighting

CTL SERIES

High Lumen Output Cutlass LED Area Light



SERIES	HOUSING HEIGHT	LENGTH & WIDTH	EPA (FT²)
CTL	4.45"	17.25" x 12.26"	1.4

Design Guidelines

Section 11-7-3

✓	Design incorporates multiple materials
✓	Exterior walls are subdivided using projections, overhangs, and awnings
✓	Design provides architectural interest at the roofline along south and north elevations

Summary

Findings

Staff concerns:

- *Provide architectural design for the west-facing entrance similar to the south-facing entrance, framed with brick veneer.*
- *Solid waste enclosure material to be solid masonry with decorated exterior-surface finish compatible to the main structure(s).*

Staff welcomes any feedback



DESIGN REVIEW BOARD

September 14, 2021

Floor Plan

