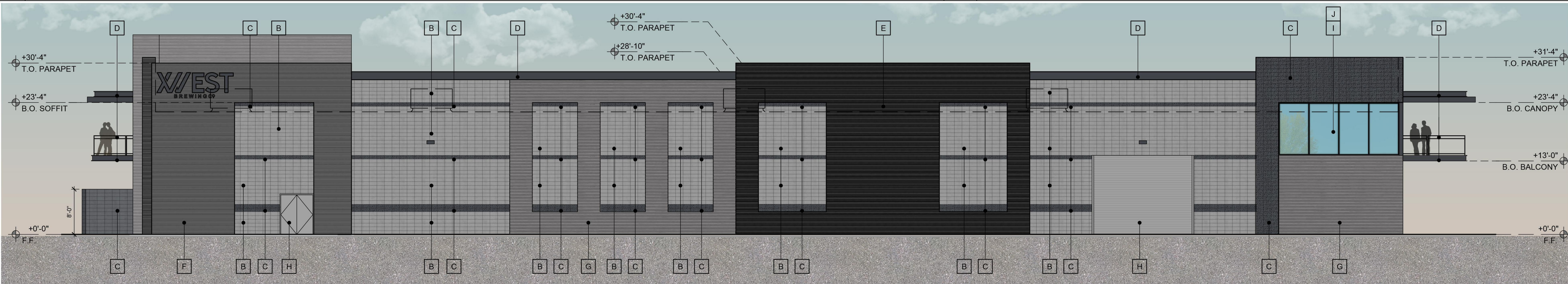




**MATERIALS AND PERCENTAGES:**

- |  |      |  |      |   |      |  |     |
|--|------|--|------|---|------|--|-----|
| A. LIGHT FIXTURE<br>COLOR: BLACK                                       | 1 %  | D. METAL ACCENTS, AWNINGS AND RAILINGS<br>COLOR: TO MATCH SHERWIN WILLIAMS SW6993 "BLACK OF NIGHT" | 5 %  | G. CORRUGATED METAL PANEL<br>TAYLOR METAL PANEL<br>COLOR: METALLIC SILVER                           | 20 % | J.   |     |
| B. CMU:<br>WALL PATTERN: STACK BOND 8" X 16"<br>COLOR: RUTHERFORD GREY | 15 % | E. METAL PANEL<br>TAYLOR METAL PANEL - SMOOTH WALL<br>COLOR: GRAPHITE BLACK SRI-26                 | 15 % | H. EXTERIOR HOLLOW METAL DOORS AND SES<br>PAINT: MATCH ADJACENT WALL/MATERIAL COLOR                 | 0 %  | K. SILO'S<br>MANUFACTURER: MERIDIAN<br>COLOR: TO MATCH WEATHERED ZINC SRI-39 | 5 % |
| C. CMU:<br>WALL PATTERN: STACK BOND 8" X 16"<br>COLOR: OPAL            | 5 %  | F. METAL PANEL<br>TAYLOR METAL PANEL - SMOOTH WALL<br>COLOR: WEATHERED ZINC SRI-39                 | 10 % | I. ANODIZED ALUMINUM STOREFRONT SYSTEM<br>MANUFACT: KAWNEER OR APPROVED EQUAL<br>COLOR: DARK BRONZE | 24 % |  |     |

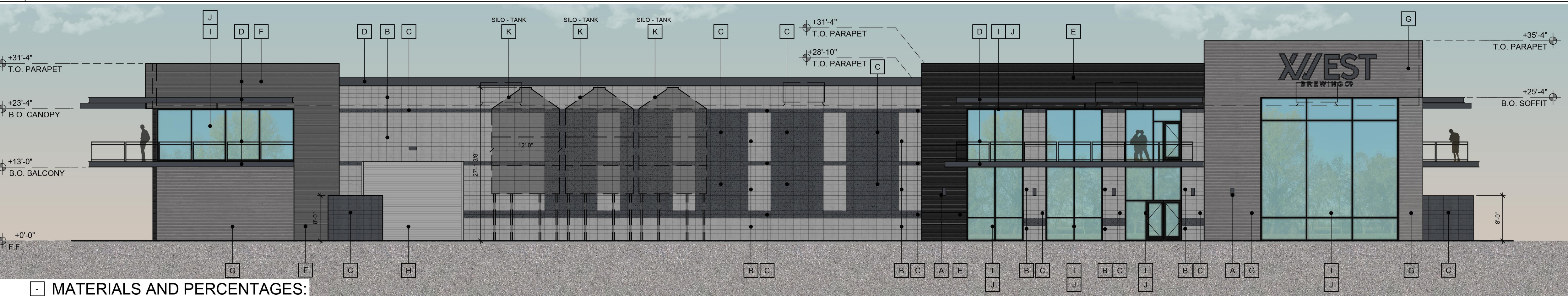
**3 NORTH EXTERIOR ELEVATION**



**MATERIALS AND PERCENTAGES:**

- |  |      |  |      |   |       |  |  |
|--|------|--|------|---|-------|--|--|
| A. LIGHT FIXTURE<br>COLOR: BLACK                                       |      | D. METAL ACCENTS, AWNINGS AND RAILINGS<br>COLOR: TO MATCH SHERWIN WILLIAMS SW6993 "BLACK OF NIGHT" | 5 %  | G. CORRUGATED METAL PANEL<br>TAYLOR METAL PANEL - GR-7<br>COLOR: METALLIC SILVER                    | 10 %  | J.   |  |
| B. CMU:<br>WALL PATTERN: STACK BOND 8" X 16"<br>COLOR: RUTHERFORD GREY | 40 % | E. METAL PANEL<br>TAYLOR METAL PANEL - SMOOTH WALL<br>COLOR: GRAPHITE BLACK SRI-26                 | 10 % | H. EXTERIOR HOLLOW METAL DOORS AND SES<br>PAINT: MATCH ADJACENT WALL/MATERIAL COLOR                 | 2.5 % | K. SILO'S<br>MANUFACTURER: MERIDIAN<br>COLOR: TO MATCH WEATHERED ZINC SRI-39 |  |
| C. CMU:<br>WALL PATTERN: STACK BOND 8" X 16"<br>COLOR: OPAL            | 15 % | F. METAL PANEL<br>TAYLOR METAL PANEL - SMOOTH WALL<br>COLOR: WEATHERED ZINC SRI-39                 | 15 % | I. ANODIZED ALUMINUM STOREFRONT SYSTEM<br>MANUFACT: KAWNEER OR APPROVED EQUAL<br>COLOR: DARK BRONZE | 2.5 % |  |  |

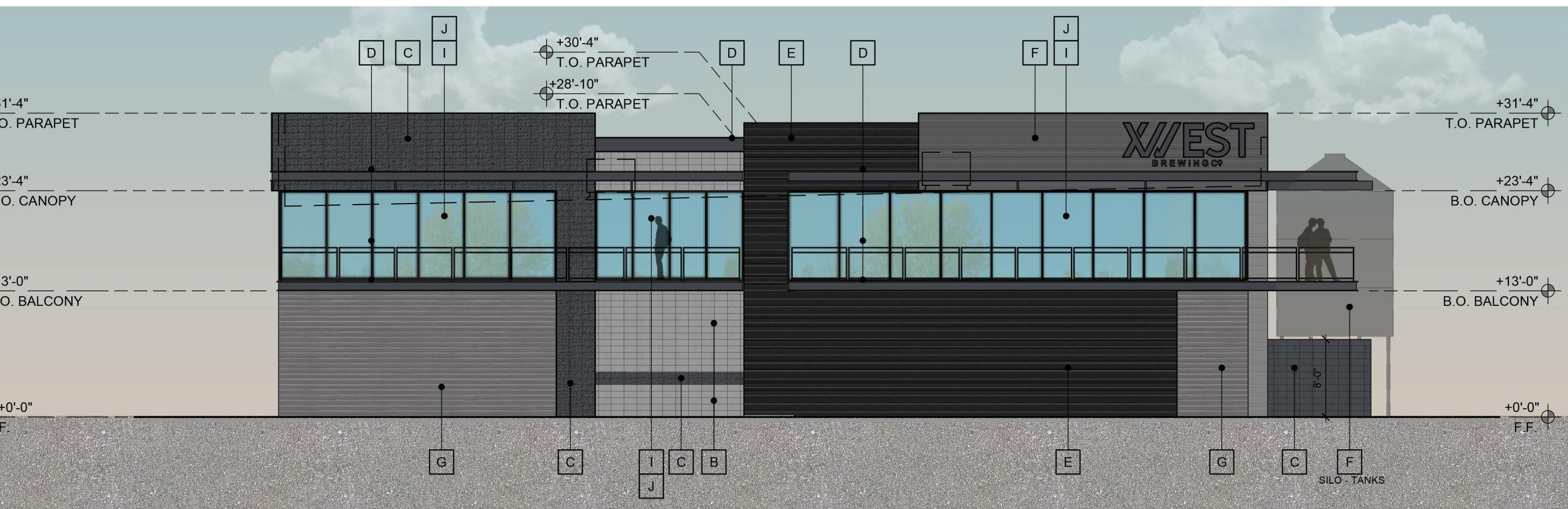
**2 WEST EXTERIOR ELEVATION**



**MATERIALS AND PERCENTAGES:**

- |  |      |  |      |   |      |  |      |
|--|------|--|------|---|------|--|------|
| A. LIGHT FIXTURE<br>COLOR: BLACK                                       | 1 %  | D. METAL ACCENTS, AWNINGS AND RAILINGS<br>COLOR: TO MATCH SHERWIN WILLIAMS SW6993 "BLACK OF NIGHT" | 5 %  | G. CORRUGATED METAL PANEL<br>TAYLOR METAL PANEL - GR-7<br>COLOR: METALLIC SILVER                    | 15 % | J.   |      |
| B. CMU:<br>WALL PATTERN: STACK BOND 8" X 16"<br>COLOR: RUTHERFORD GREY | 20 % | E. METAL PANEL<br>TAYLOR METAL PANEL - SMOOTH WALL<br>COLOR: GRAPHITE BLACK SRI-26                 | 10 % | H. EXTERIOR HOLLOW METAL DOORS AND SES<br>PAINT: MATCH ADJACENT WALL/MATERIAL COLOR                 | 4 %  | K. SILO'S<br>MANUFACTURER: MERIDIAN<br>COLOR: TO MATCH WEATHERED ZINC SRI-39 | 10 % |
| C. CMU:<br>WALL PATTERN: STACK BOND 8" X 16"<br>COLOR: OPAL            | 5 %  | F. METAL PANEL<br>TAYLOR METAL PANEL - SMOOTH WALL<br>COLOR: WEATHERED ZINC SRI-39                 | 10 % | I. ANODIZED ALUMINUM STOREFRONT SYSTEM<br>MANUFACT: KAWNEER OR APPROVED EQUAL<br>COLOR: DARK BRONZE | 20 % |  |      |

**1 EAST EXTERIOR ELEVATION**



**MATERIALS AND PERCENTAGES:**

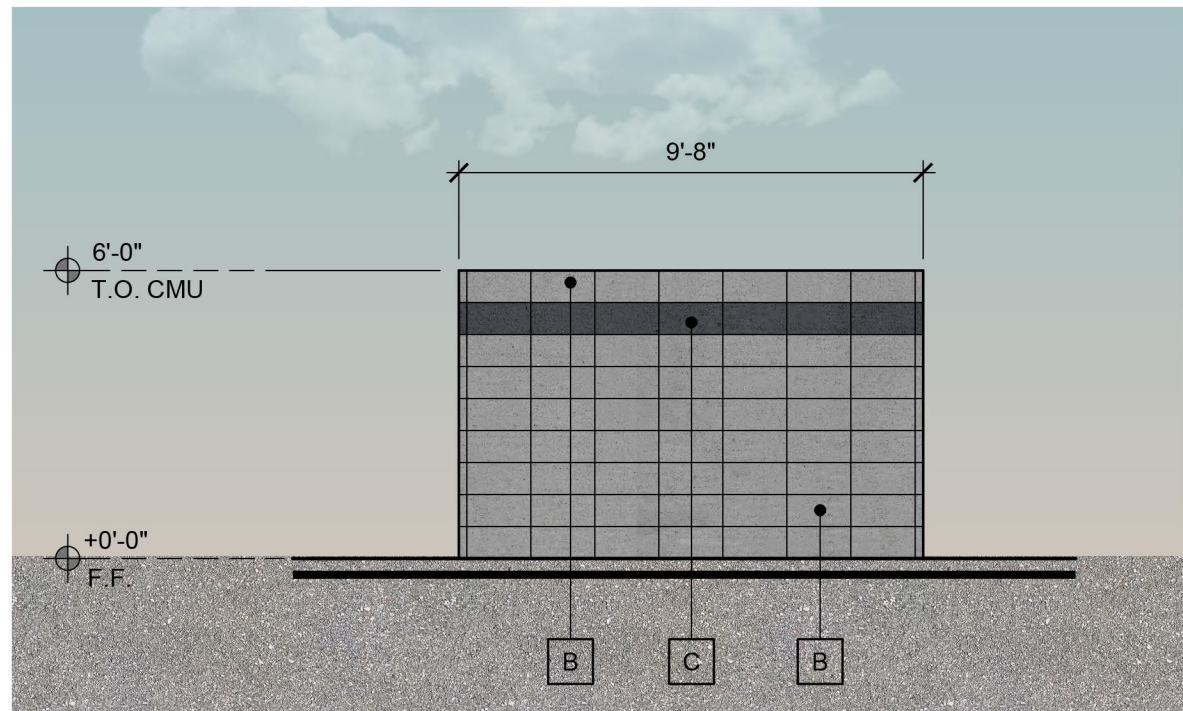
- |  |      |  |      |   |      |  |     |
|--|------|--|------|---|------|--|-----|
| A. LIGHT FIXTURE<br>COLOR: BLACK                                       |      | D. METAL ACCENTS, AWNINGS AND RAILINGS<br>COLOR: TO MATCH SHERWIN WILLIAMS SW6993 "BLACK OF NIGHT" | 10 % | G. CORRUGATED METAL PANEL<br>TAYLOR METAL PANEL<br>COLOR: METALLIC SILVER                           | 15 % | J.   |     |
| B. CMU:<br>WALL PATTERN: STACK BOND 8" X 16"<br>COLOR: RUTHERFORD GREY | 15 % | E. METAL PANEL<br>TAYLOR METAL PANEL - SMOOTH WALL<br>COLOR: GRAPHITE BLACK SRI-26                 | 15 % | H. EXTERIOR HOLLOW METAL DOORS AND SES<br>PAINT: MATCH ADJACENT WALL/MATERIAL COLOR                 |      | K. SILO'S<br>MANUFACTURER: MERIDIAN<br>COLOR: TO MATCH WEATHERED ZINC SRI-39 | 5 % |
| C. CMU:<br>WALL PATTERN: STACK BOND 8" X 16"<br>COLOR: OPAL            | 10 % | F. METAL PANEL<br>TAYLOR METAL PANEL - SMOOTH WALL<br>COLOR: WEATHERED ZINC SRI-39                 | 10 % | I. ANODIZED ALUMINUM STOREFRONT SYSTEM<br>MANUFACT: KAWNEER OR APPROVED EQUAL<br>COLOR: DARK BRONZE | 20 % |  |     |

**4 SOUTH EXTERIOR ELEVATION (GOLF COURSE)**

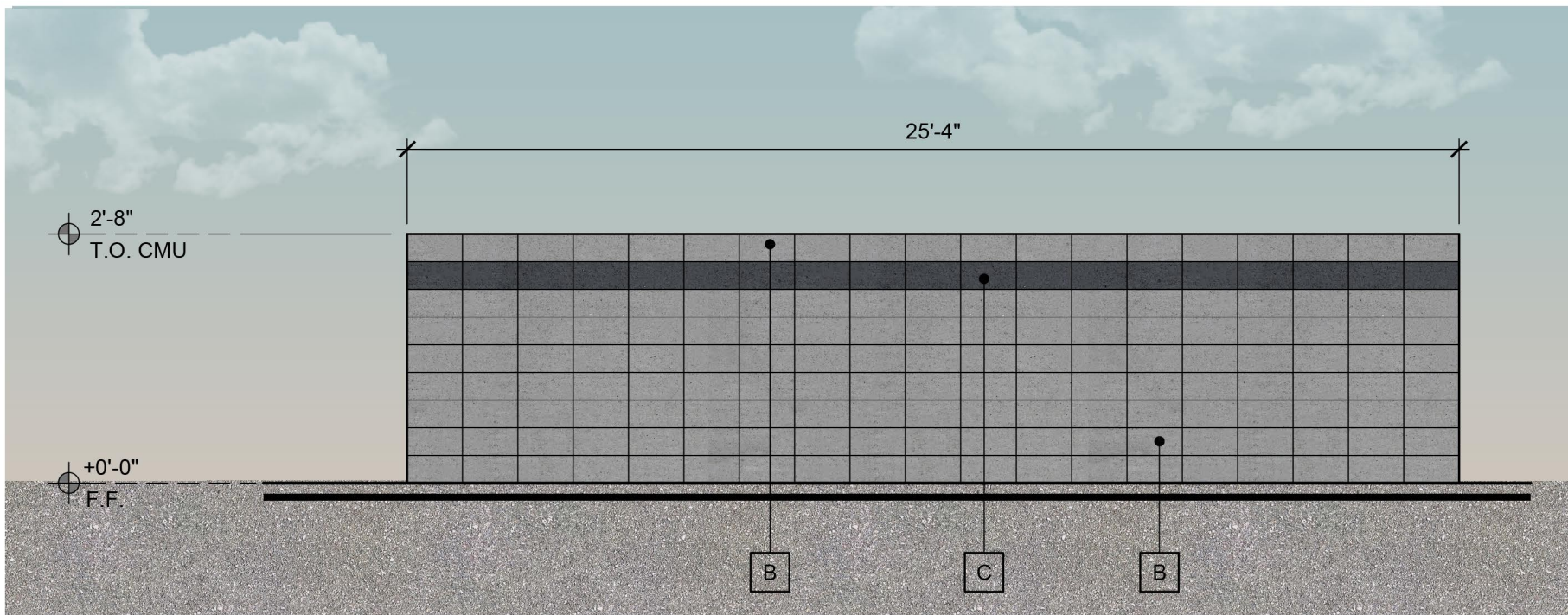
**FINISH KEYNOTES:**

- |   |  |
|---|--|
| A. LIGHT FIXTURE<br>COLOR: BLACK  |  |
| B. CMU: MESASTONE -OLD CASTLE SUPERLITE -ECHELON -TRENWYTH<br>WALL PATTERN: STACK BOND 8" X 16"<br>COLOR: RUTHERFORD GREY |  |
| C. CMU: MESASTONE - TRENWYTH INDUSTRIES, INC.<br>WALL PATTERN: STACK BOND 8" X 16"<br>COLOR: OPAL                         |  |
| D. METAL ACCENTS, AWNINGS AND RAILINGS<br>COLOR: TO MATCH SHERWIN WILLIAMS SW6993 "BLACK OF NIGHT"                        |  |
| E. METAL PANEL<br>TAYLOR METAL PANEL - SMOOTH WALL - DOUBLE V GROVE<br>COLOR: GRAPHITE BLACK SRI-26                       |  |
| F. METAL PANEL<br>TAYLOR METAL PANEL - SMOOTH WALL - DOUBLE V GROVE<br>COLOR: WEATHERED ZINC SRI-39                       |  |
| G. CORRUGATED METAL PANEL<br>TAYLOR METAL PANEL - GR-7<br>COLOR: METALLIC SILVER  |  |
| H. EXTERIOR HOLLOW METAL DOORS AND SES<br>PAINT: MATCH ADJACENT WALL/MATERIAL COLOR                                       |  |
| I. ANODIZED ALUMINUM STOREFRONT SYSTEM<br>MANUFACT: KAWNEER OR APPROVED EQUAL<br>COLOR: DARK BRONZE                       |  |
| J. 1" INSULATED GLAZING<br>VALUE: (U=0.29, SHGC= 0.28)  |  |
| K. SILO'S<br>MANUFACTURER: MERIDIAN<br>COLOR: TO MATCH WEATHERED ZINC SRI-39  |  |

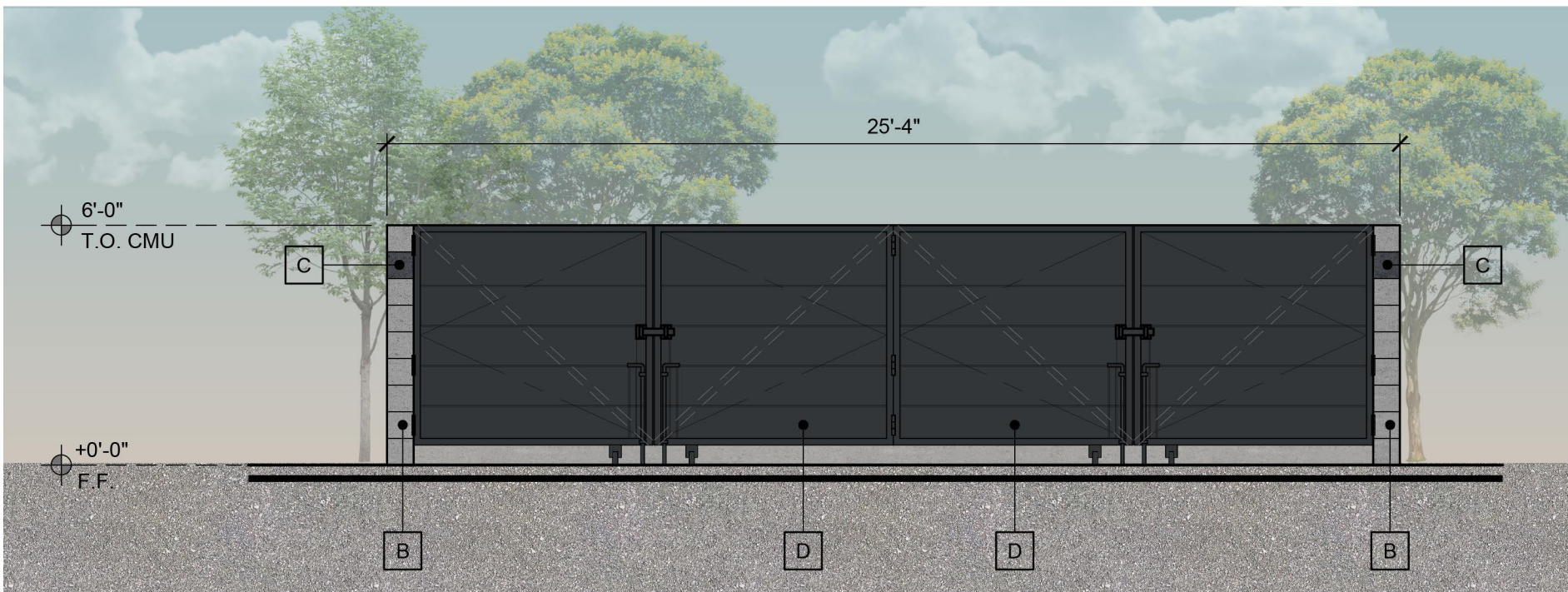




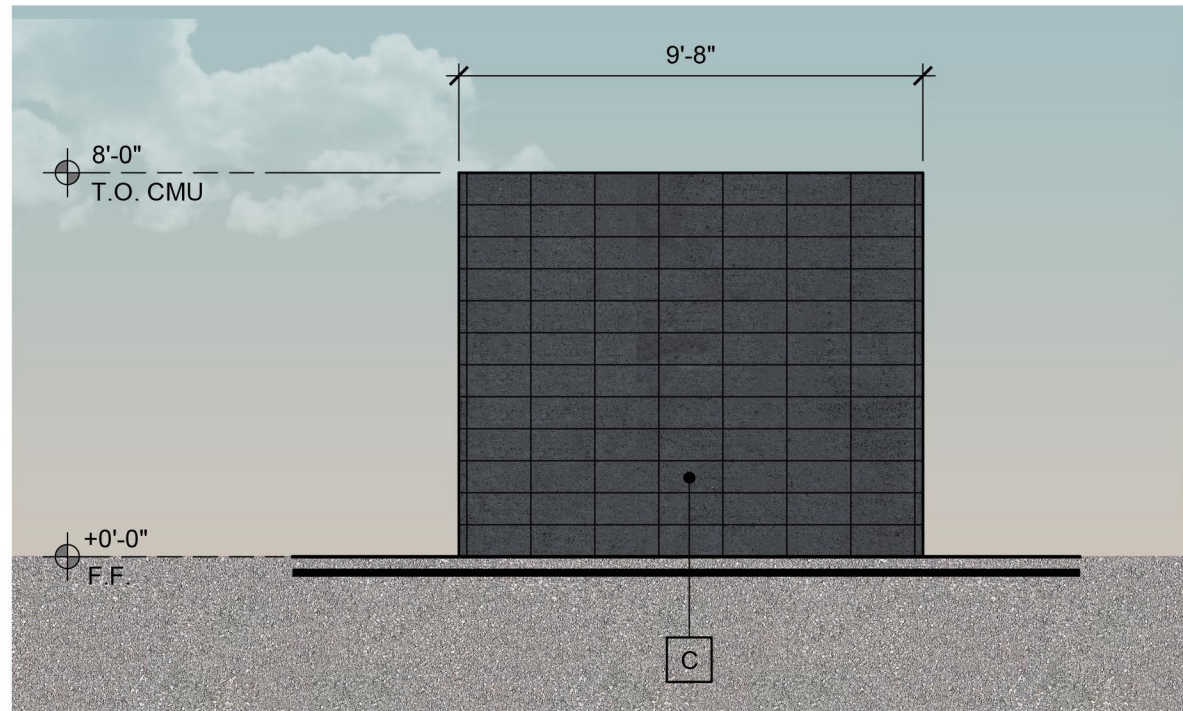
REFUSE ENCLOSURE ELEVATION - ELEV. 'B'



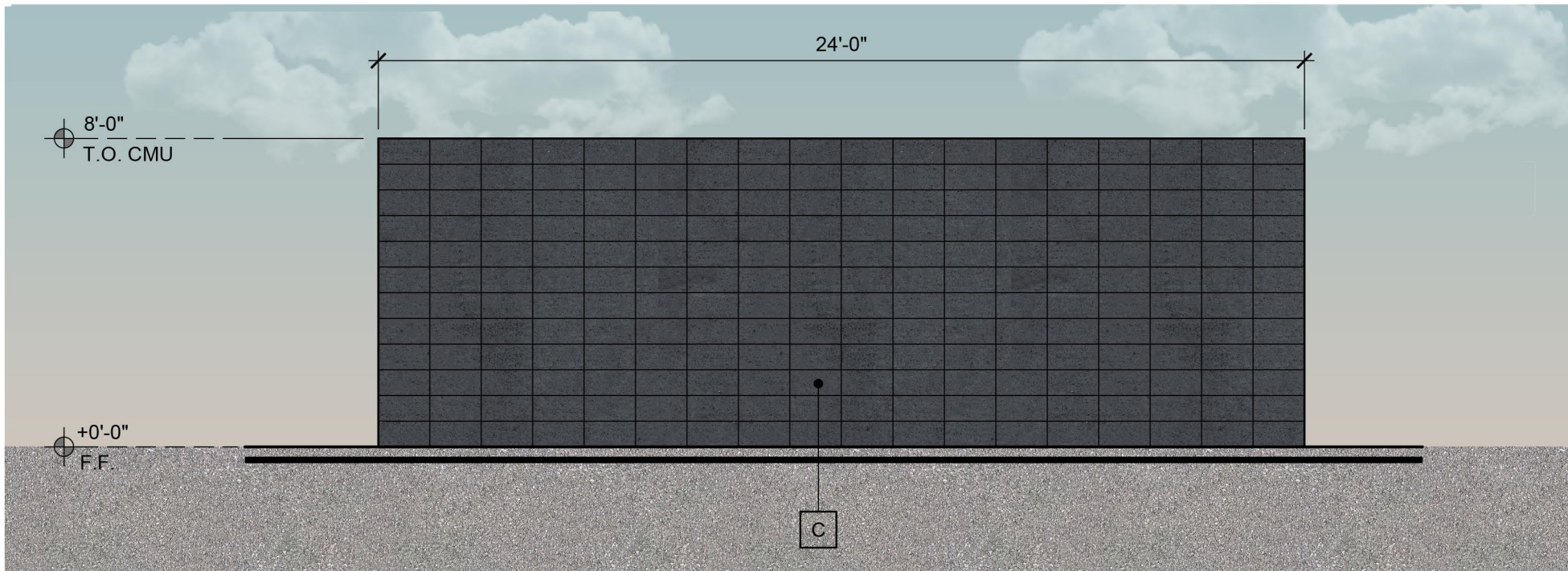
REFUSE ENCLOSURE ELEVATION - ELEV. 'C'



REFUSE ENCLOSURE ELEVATION - ELEV. 'A'



OUTDOOR AREA 1



OUTDOOR AREA 2

FINISH KEYNOTES:

B.

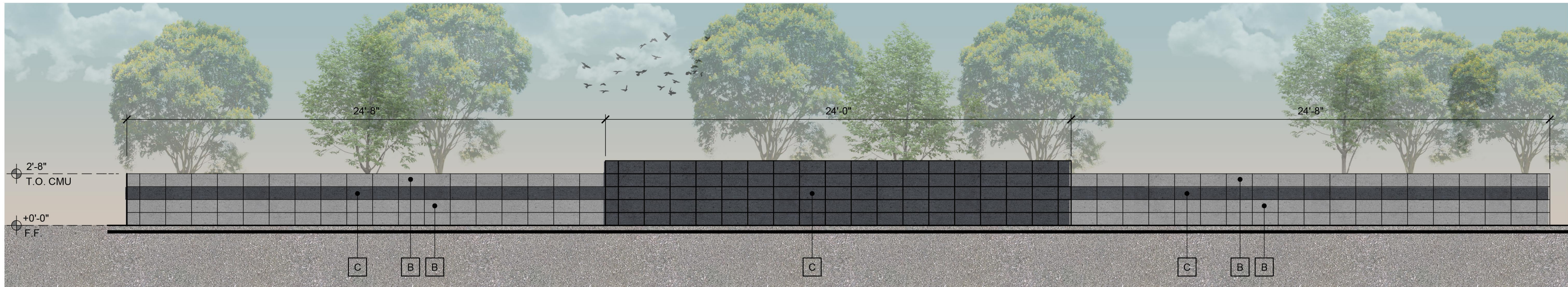
CMU: MESASTONE -OLD CASTLE SUPERLITE -ECHELON -TRENWYTH  
WALL PATTERN: STACK BOND 8" X 16"  
COLOR: RUTHERFORD GREY

C.

CMU: MESASTONE - TRENWYTH INDUSTRIES, INC.  
WALL PATTERN: STACK BOND 8" X 16"  
COLOR: OPAL

D.

METAL ACCENTS, AWNINGS AND RAILINGS  
COLOR: TO MATCH SHERWIN WILLIAMS SW6993 "BLACK OF NIGHT"



SCREEN WALL

Δ	DATE	REVISION
1		
2		
3		
4		
5		

PARKING LOT  
SCREEN WALL