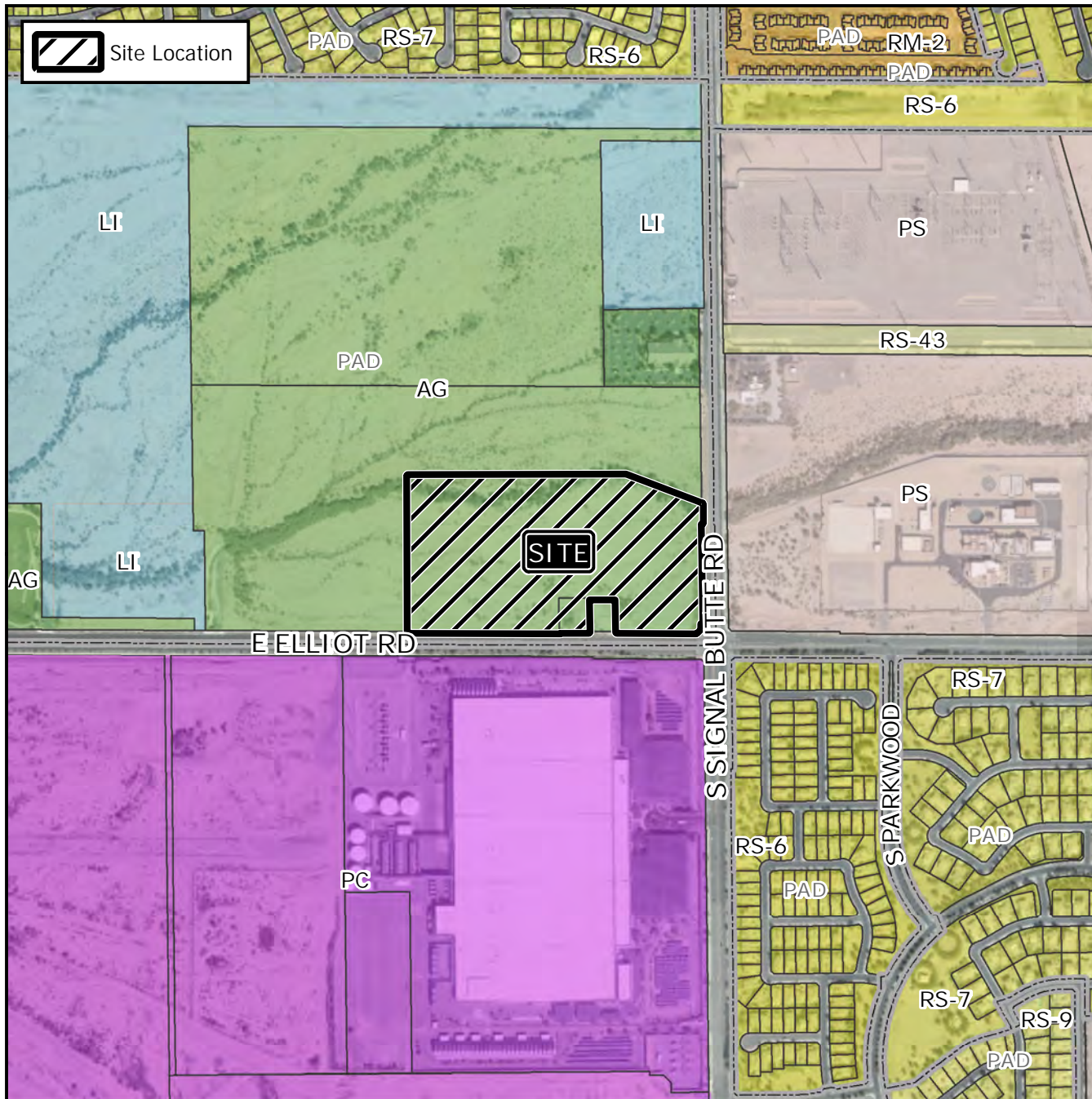


# Design Review Vicinity Map: DRB21-00547



## Case Details

Case:

DRB21-00547

Site / Address:

District 6. Within the 10500 to 10800 blocks of East Elliot Road (north side) and within the 3500 block of South Signal Butte Road (west side). Located north and west of Signal Butte Road and Elliot Road. (25.7± acres)

Request:

Requesting the review of a commercial and industrial development.

