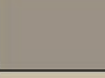

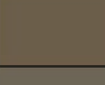
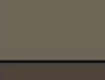


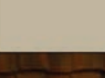
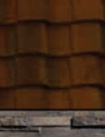



- NOTES:
- ALL MASONRY WALLS TO BE STRUCTURALLY ENGINEERED FOR PROPER STABILITY BY A CERTIFIED STRUCTURAL ENGINEER.
 - ALL SIGNAGE PER REQUIRED SEPARATE PERMIT FROM CITY OF MESA.
 - SIGNAGE FACE AND LETTERING TO CONFORM TO CITY OF SCOTTSDALE SIGNAGE CODES ANDSPECIFICATIONS.

MATERIALS FINISH SCHEDULE

		MATERIAL	FINISH	MANUFACTURER	COLOR / MATERIAL PRODUCT CODE
PT-1		1-KOTE STUCCO SYSTEM	PAINT Body Color 1	Dunn Edwards	Barnwood Gray DET620
PT-2		1-KOTE STUCCO SYSTEM	PAINT Body Color 2	Dunn Edwards	Birchwood DEC752
PT-3		1-KOTE STUCCO SYSTEM	PAINT-(Option 1) Fascia / Balcony Rails / Front Doors	Dunn Edwards	Cocoa DEC755
PT-4		1-KOTE STUCCO SYSTEM	PAINT-(Option 2) Fascia / Balcony Rails / Front Doors	Dunn Edwards	Cocoa Powder DET631
PT-5		1-KOTE STUCCO SYSTEM	PAINT-(Option 3) Fascia / Balcony Rails / Front Doors	Dunn Edwards	Nomad DET697
PT-6		WROUGHT IRON/ WOOD	PAINT Railing / Fascia / Site Walls	Sherwin -Williams	Quaker Bronze
PT-7		SIDING WALLS	PAINT Railing / Fascia / Site Walls	Dunn Edwards	Pigeon Grey DE6214
R-1		CONCRETE ROOF TILE	ROOF TILE	Eagle Roofing	Roof Tile Finish 3106 CapistranoBrown, Black Flashed
ST-1		STONE VENEER	STONE VENEER	Coronado	Element LedgeStone -Mount Vernon
CMU-1	REGULAR 8 X 8 X 16 CMU BLOCK PAINTED PT-4				
CMU-2	SPLIT FACE 8 X 8 X 16 CMU BLOCK PAINTED PT-4				
CMU-3	REGULAR 8 X 8 X 16 MASONRY CAP PAINTED PT-2				
CMU-4	8 X 8 X 16 RIBBED BLOCK PAINTED PT-4				
NOTE	STUCCO TEXTURE: LIGHT LACE				

Rev.	Date	Submittal
	10-30-2020	PRE-APPLICATION
	02-15-2021	Preliminary Site Plan Submittal
	04-15-2021	2nd Review DRB Submittal



EXPIRATION DATE: 09/30/2023
SIGNED AND SEALED
ELECTRONICALLY 04-15-2021

Copyright reserved:
e-project 2020-2021
This document / drawing is protected by federal copyright law. No copies, reproductions or electronic transfer of this document / drawing may be made without written authorization. Civil proceedings claiming damages or other remedies may be brought against persons found copying this document without permission © copyright.

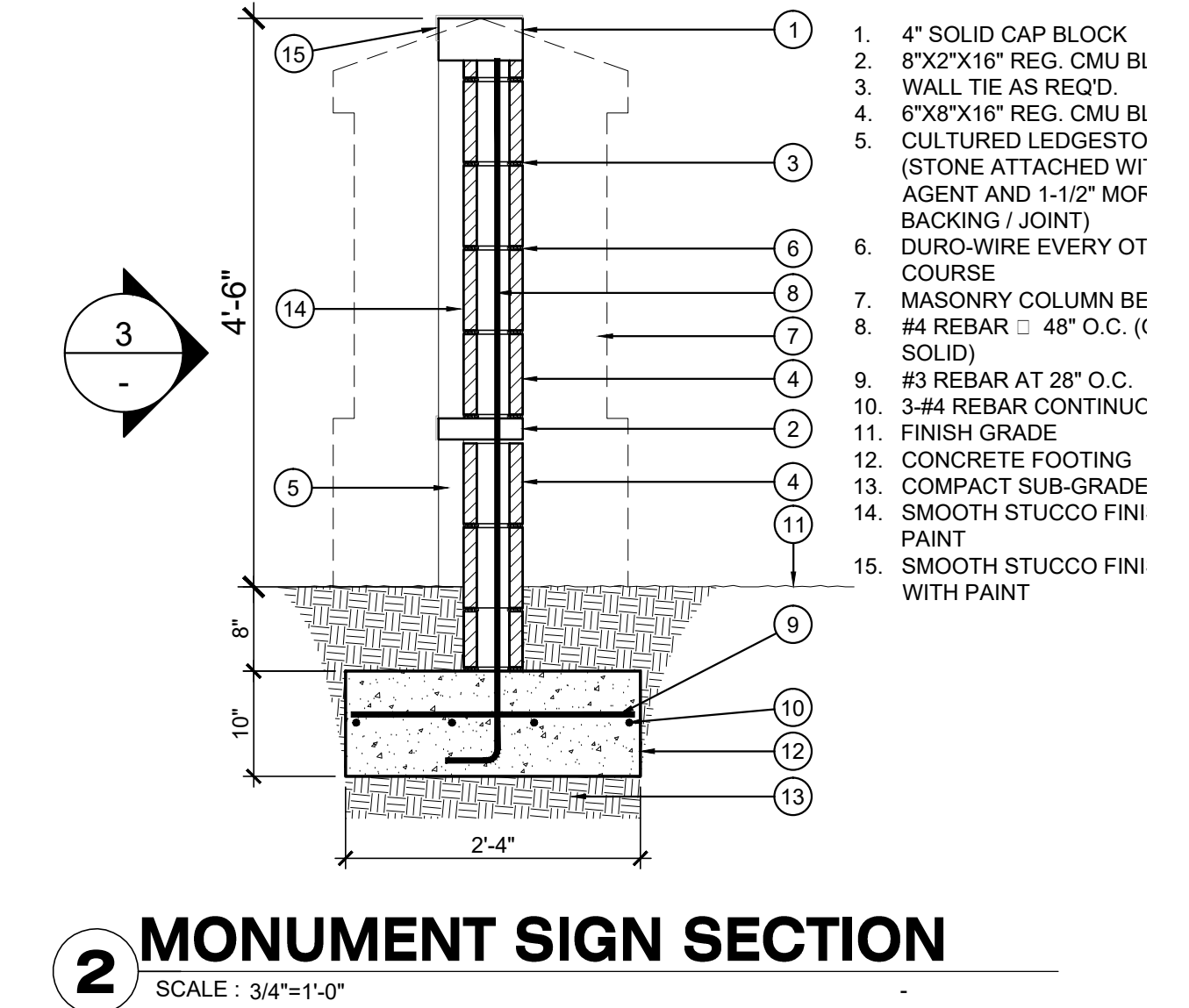
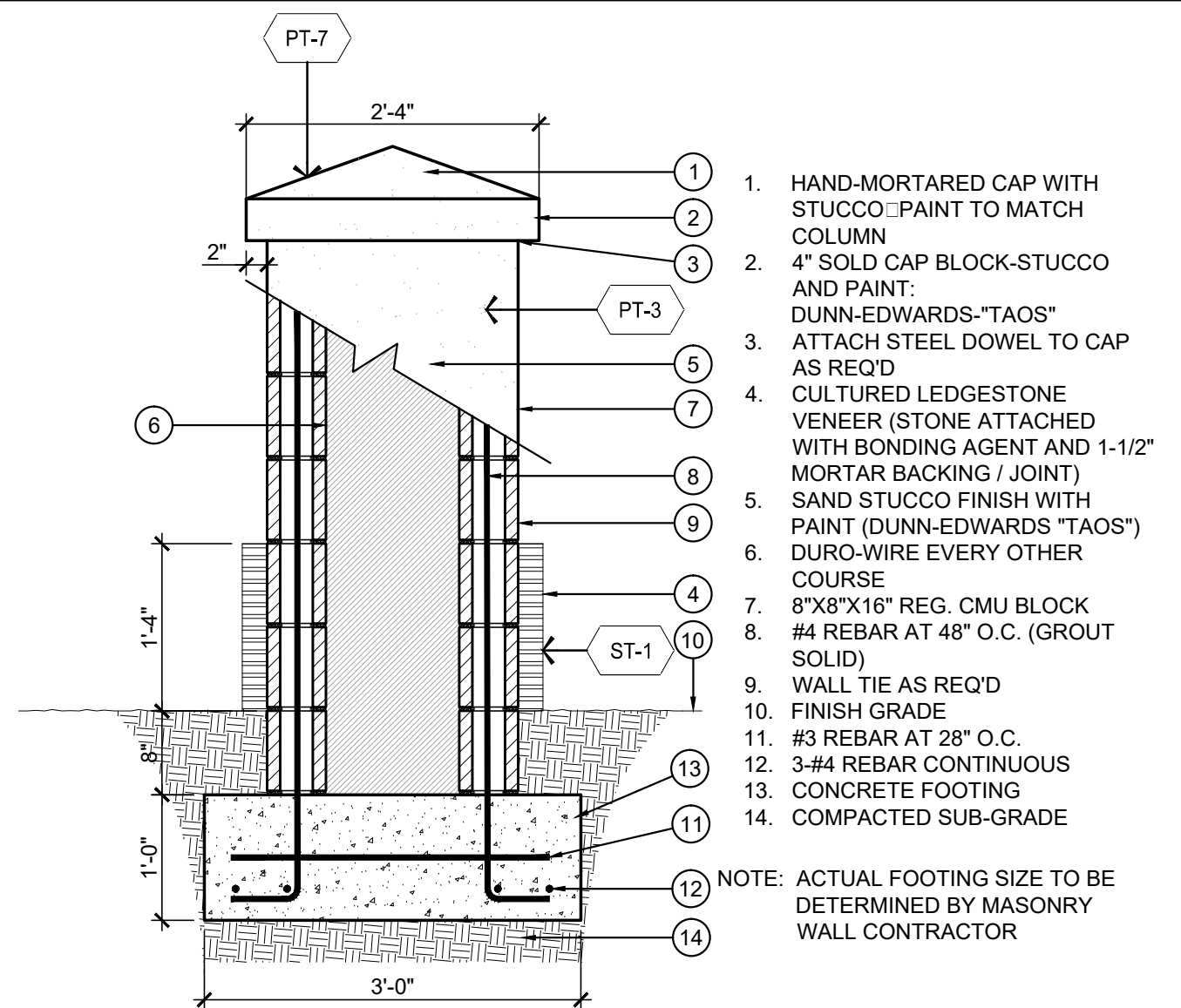
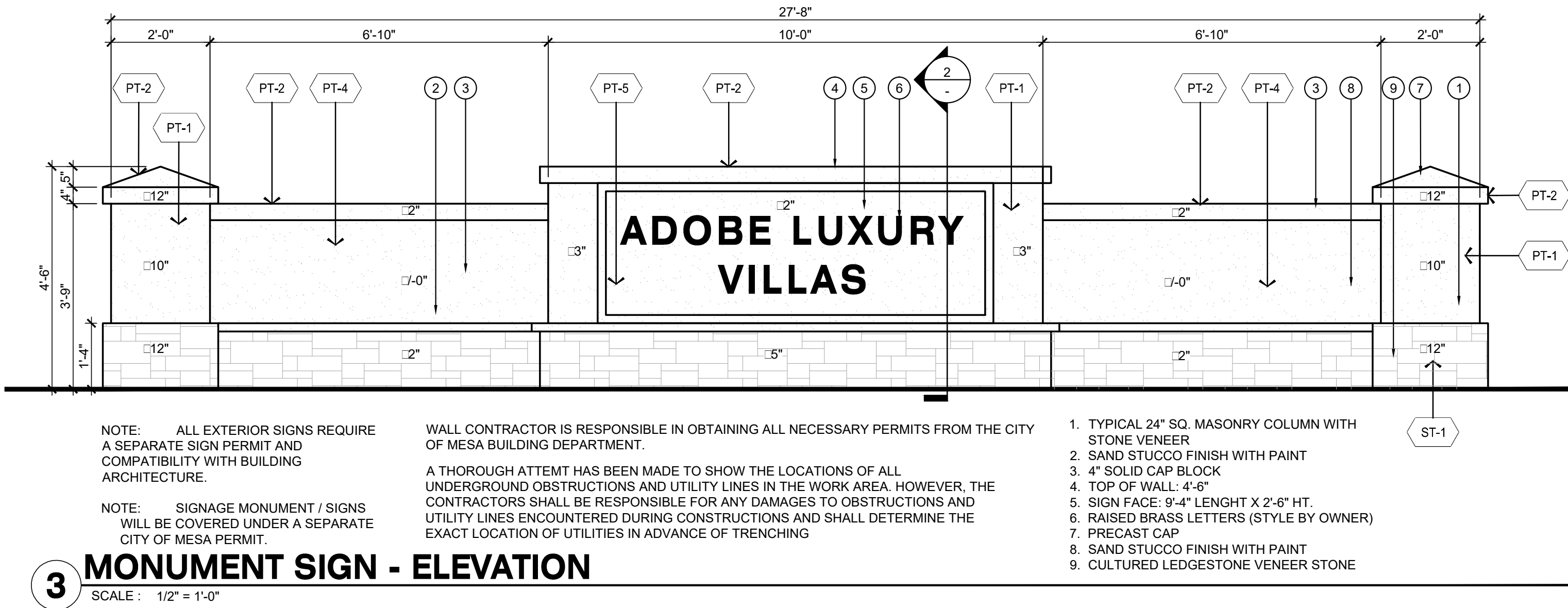
Adobe
Luxury Villas
5950 EAST ADOBE RD, MESA 85205

Monument Sign

Date:	04-15-2021
Project No.	7620
Drawn By:	AP
Checked By:	AP
Approved By:	ED

Scale: AS NOTED

A353

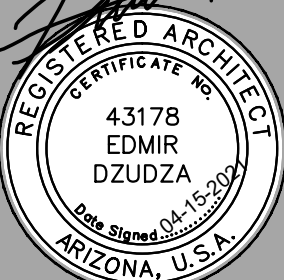


- NOTES:
- ALL MASONRY WALLS TO BE STRUCTURALLY ENGINEERED FOR PROPER STABILITY BY A CERTIFIED STRUCTURAL ENGINEER.
 - ALL SIGNAGE PER REQUIRED SEPARATE PERMIT FROM CITY OF MESA.
 - SIGNAGE FACE AND LETTERING TO CONFORM TO CITY OF SCOTTSDALE SIGNAGE CODES ANDSPECIFICATIONS.

MATERIALS FINISH SCHEDULE

	MATERIAL	FINISH	MANUFACTURER	COLOR / MATERIAL PRODUCT CODE
PT-1	1-KOTE STUCCO SYSTEM	PAINT Body Color 1	Dunn Edwards	Barnwood Gray DET620
PT-2	1-KOTE STUCCO SYSTEM	PAINT Body Color 2	Dunn Edwards	Birchwood DEC752
PT-3	1-KOTE STUCCO SYSTEM	PAINT-(Option 1) Fascia / Balcony Rails / Front Doors	Dunn Edwards	Cocoa DEC755
PT-4	1-KOTE STUCCO SYSTEM	PAINT-(Option 2) Fascia / Balcony Rails / Front Doors	Dunn Edwards	Cocoa Powder DET631
PT-5	1-KOTE STUCCO SYSTEM	PAINT-(Option 3) Fascia / Balcony Rails / Front Doors	Dunn Edwards	Nomad DET697
PT-6	WROUGHT IRON / WOOD	PAINT Railing / Fascia / Site Walls	Sherwin -Williams	Quaker Bronze
R-1	CONCRETE ROOF TILE	ROOF TILE	Eagle Roofing	Roof Tile Fnish 3106 CapistranoBrown, Black Flashed
ST-1	STONE VENEER	STONE VENEER	Coronado	Element Ledgstone -Mount Vernon
CMU-1	REGULAR 8 X 8 X 16 CMU BLOCK PAINTED PT-2			
CMU-2	SPLIT FACE 8 X 8 X 16 CMU BLOCK PAINTED PT-2			
CMU-3	REGULAR 8 X 8 X 16 MASONRY CAP PAINTED PT-2			
CMU-4	8 X 8 X 16 RIBBED BLOCK PAINTED PT-4			
NOTE	STUCCO TEXTURE: LIGHT LACE			

Rev.	Date	Submittal
	10-30-2020	PRE-APPLICATION
	02-15-2021	Preliminary Site Plan Submittal
	04-15-2021	2nd Review DRB Submittal



EXPIRATION DATE: 09/30/2023
SIGNED AND SEALED
ELECTRONICALLY 04-15-2021

Copyright reserved:
e-project 2020-2021
This document / drawing is protected by federal copyright law. No copies, reproductions or electronic transfer of this document / drawing may be made without written authorization. Civil proceedings claiming damages or other remedies may be brought against persons found copying this document without permission © copyright.

*Adobe
Luxury Villas*
5950 EAST ADOBE RD, MESA 85205

Monument Sign

Date:	04-15-2021
Project No.	7620
Drawn By:	AP
Checked By:	AP
Approved By:	ED

Scale: AS NOTED

A130