

Catalog Number

Project

Type

FEATURES & SPECIFICATIONS

APPLICATION — The Cutlass Series of high output LED luminaires are designed for new outdoor parking area lighting and to be a replacement for HID area lights. They are optimal for lighting applications where long life, low maintenance, and consistent color rendering is required. The high efficient/lumen output allows the fixture to be used for parking, restaurant, quick service, shopping centers, or general area lighting applications.

CONSTRUCTION — The heavy-duty housing is constructed of cast aluminum with heat dissipating fins. The optical assemblies are sealed in place using a silicone gasket for weather tight protection. ETL listed for wet locations (IP65). Each fixture can accommodate advanced wireless control, management and reporting systems for outdoor lighting when ordered with the optional accessories (verify compatibility if using controls supplied by others) such as CTLARM mounting (required).

FINISH — A corrosion-resistant epoxy E-Coat layer that forms a uniform and all-encompassing protective barrier is applied to the fixtures prior to electrostatically applying a super durable powder coat finish. Standard colors available: Black, Bronze, US Green, White. Custom colors available upon request.

OPTICAL SYSTEM — Made with a state of the art UV stabilized acrylic high performance refractive optical assemblies that use high transmissivity materials to achieve precise photometric distributions. Available in Type II, III, IV, Automotive Frontline Wide, IV Tennis, V Medium and V Wide beam configurations. Star Light Friendly (meets or exceeds Dark Sky requirements) in the horizontal position.

ELECTRICAL SYSTEM — Available in up to a 70,000 LED lumens in most optical distributions with either 5000K Cool White (+/- 500K), 4000K Neutral White or 3000K Warm White color temperatures. LED's rated for over 50,000 hours at 25°C ambient temperature. Available with 120-277V 50/60 Hz power supply. 480V and 347V input option or 0-10V dimming. Built-in surge protection up to 10 kV. Built-in Active PFC Function LED driver conforms to UL8750 standards.

CTL SERIES

High Lumen Output Cutlass LED Area Light



SERIES	HOUSING HEIGHT	LENGTH & WIDTH	EPA (FT ²)
CTL	4.45"	17.25" x 12.26"	1.4

MOUNTING — Proprietary slide-on mounting system allows for quick installation. The CTL can be ordered with an aesthetically pleasing arm mount (CTLARM – required for integrating dynamic control systems), a 2" adjustable slip fitter (CTL2AF) for mounting on a standard 2-3/8" OD tenon and an entire compliment of pole brackets with integrated quick mount technology. CTLSM for direct mounting to poles in single (1 @ 90°) or D180 (2 @ 180°).

LISTINGS — Complies with UL8750. ETL listed for wet locations. Meets US and Canadian safety standards. -40°C to 50°C ambient operation. RoHS Compliant.

WARRANTY — The complete luminaire is covered by a 5-year limited warranty.

ORDERING INFORMATION

Choose the bold face options for the appropriate luminaire configuration for your application and enter on the line above each fixture attribute. Accessories may be factory installed, depending on the particular accessory chosen, but still be ordered as a separate line item.

EXAMPLE:

CTLC60LT5M1-BZ

CTL						
SERIES	COLOR TEMP	NOMINAL LUMENS	OPTICS	VOLTAGE	FINISH	OPTIONS
	C = Cool White (5000K) N = Neutral White (4000K) W = Warm White (3000K)	5L = 5,000 Lumens 8L = 8,000 Lumens 10L = 10,000 Lumens 12L = 12,000 Lumens 15L = 15,000 Lumens 20L = 20,000 Lumens 25L = 25,000 Lumens 30L = 30,000 Lumens 35L = 35,000 Lumens 40L = 40,000 Lumens 45L = 45,000 Lumens 50L = 50,000 Lumens 55L = 55,000 Lumens 60L = 60,000 Lumens 65L ⁹ = 65,000 Lumens 70L ⁹ = 70,000 Lumens	T2 = Type II T3 = Type III T4 = Type IV FAW = Frontline Auto Wide T4T = Type IV Tennis T5M = Type V Medium T5W = Type V Wide	1 = Multi-Volt ¹ 2 = 347-480V (HV)	BZ = Bronze BK = Black GR = US Green WH = White SP = Special ²	PCR7 ⁶ = 7 Pin Twist-Lock Photocell Receptacle ANSI C136.41 & Receptacle Shorting Cap 2AF ^{7,8} = 2" Adjustable Slip fitter DLP ¹⁰ = Dimming Leads Pulled

ACCESSORIES (Order as separate line items. Specify finish for accessories.)

PC2	480V Twist-Lock Photocell
PC7	Multi-Tap (105-285V) Twist-Lock Photocell
CTLARM ⁷	Decorative Arm Mount (0.3 EPA, 3.5 lbs)
CTLSM ^{3,7}	Slide Mount Adaptor
CTLB15 ⁸	Adjustable Yoke Mount with Slide Adaptor
CTLARMR	Decorative Arm Mount for Round Poles (0.3 EPA, 3.7 lbs)
CTLARMFSP ¹⁰	Arm with Integrated PIR Motion Sensor
S215 ⁴	Angled Back Light Shield
S219 ⁵	Large Angled Back Light Shield
TLWSFSIR-100	Remote Handheld Sensor Configuration Tool
TLWSFSP-L2	360° lens, maximum coverage 48" diameter from 8' height
TLWSFSP-L3	360° lens, maximum coverage 40" diameter from 20' height
TLWSFSP-L4	360° lens, maximum coverage 60" diameter from 40' height
TLWSFSP-L7	360° lens, maximum coverage 100" diameter from 40' height
CTLHT238	Horizontal 2-3/8" OD Tenon Mount

NOTES

- ¹ = Multi-Volt is an auto ranging power supply from 100V to 300V input.
- ² = Custom RAL color matching is available. Contact your sales representative for additional info.
- ³ = Slide mount adaptor for direct pole mounts cannot be used when mounting fixtures at 90° increments.
- ⁴ = Requires one S215 for 5L-20L units; two S215 for 25L-40L units. For 45L, please see Lumen Characteristics chart for details.
- ⁵ = Requires one S219 for 50L-60L units. For 45L, please see Lumen Characteristics chart for details.
- ⁶ = PCR7 photocell receptacle must be oriented in the field so that the light sensor on the control is facing North. When used with the CTL2AF, the fixture must be in a downward facing position (<90° tilt). Use of the PCR7 with a fixture in an upward facing position will void warranty.
- ⁷ = Accessory mounting device must be ordered for each cutlass luminaire to provide mounting means.
- ⁸ = Do not tilt the CTL more than 45 degrees upward from horizontal when using the CTL2AF & CTLB15
- ⁹ = Only available in certain optics and wattages. See LUMINAIRE CHARACTERISTICS chart for details.
- ¹⁰ = DLP Option Required.



DesignLights Consortium® Qualified. Please go to www.designlights.org for the current Qualified Products List. Further details about qualified models may be found under Family Models.



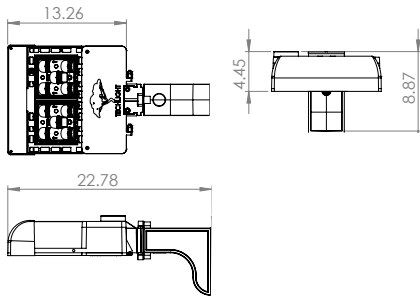
www.techlight.com

CTL High Lumen Output Cutlass LED Area Light

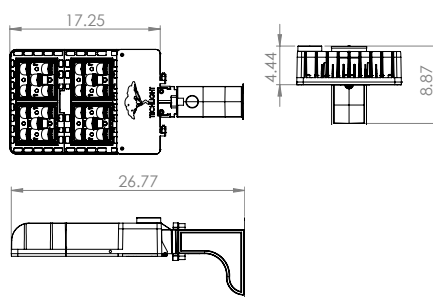
AVAILABLE FIXTURE DIMENSIONS

Dimensions shown are for fixture bodies only. Mounting options must be ordered separately. Fixture shown with arm sold separately.

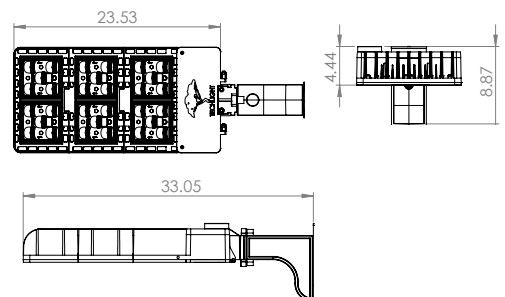
Dimensions shown for 5L - 20L Brick Unit



Dimensions shown for 25L - 45L Brick Unit



Dimensions shown for 45L - 70L Brick Unit



FIXTURE & MOUNTING ACCESSORIES

CTLARM

Decorative Arm Mount (0.3 EPA, 3.5 lbs.) with Slide Mount Adaptor



CTL2AF⁴

2" Adjustable Slip Fitter with Slide Mount Adaptor



CTLISM

Slide Mount Adaptor for square pole mount only



PC2

480V Twist-Lock Photocell

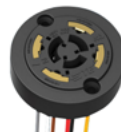


PC7

Multi-Tap (105-285V) Twist-Lock Photocell

PCR7⁹

7-Pin Twist-Lock Photocell Receptacle ANSI C136.41 and Receptacle Shorting Cap



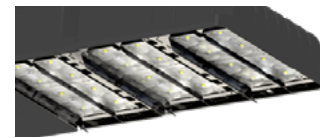
CTLB15⁵

Adjustable Yoke Mount with Slide Adaptor



S219⁵

Large Angled Back Light Shield



S215⁴

Angled Back Light Shield



NOTES

⁴= Requires one S215 for 5L-20L units; two S215 for 25L-40L units. For 45L, please see Lumen Characteristics chart for details.

⁵= Requires one S219 for 50L-60L units. For 45L, please see Lumen Characteristics chart for details.

⁹= PCR7 photocell receptacle must be oriented in the field so that the light sensor on the control is facing North.

CTLHT238

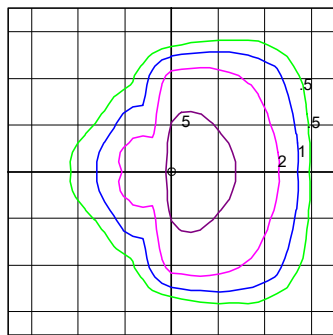
Horizontal 2-3/8" OD Tenon Mount with Slide Mount Adaptor



PHOTOMETRICS

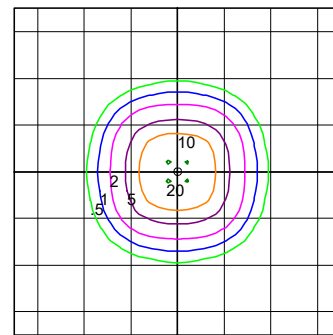
IES INDOOR REPORT PHOTOMETRIC FILE

Typical Type III photometric optical distribution



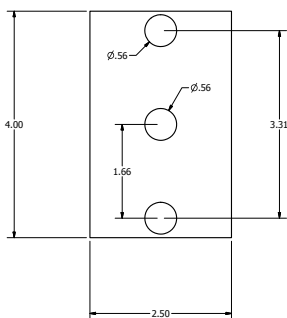
IES INDOOR REPORT PHOTOMETRIC FILE

Typical Type 5M photometric optical distribution



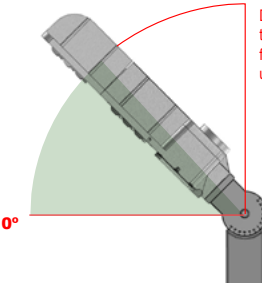
DRILL TEMPLATE

CTL - Not to Scale



45° Maximum Tilt

90°



Do not tilt the CTL more than 45 degrees upward from horizontal when using the CTL2AF

FIXTURE WEIGHTS (APPROX)

Fixture Configuration	2 Brick	4 Brick	6 Brick
Weight (lbs)	14 lbs	20 lbs	28 lbs



TECHLIGHT
INNOVATION IN ILLUMINATION

2707 SATSUMA DR. | DALLAS, TX 75229 | PH: 800.225.0727 | www.techlight.com