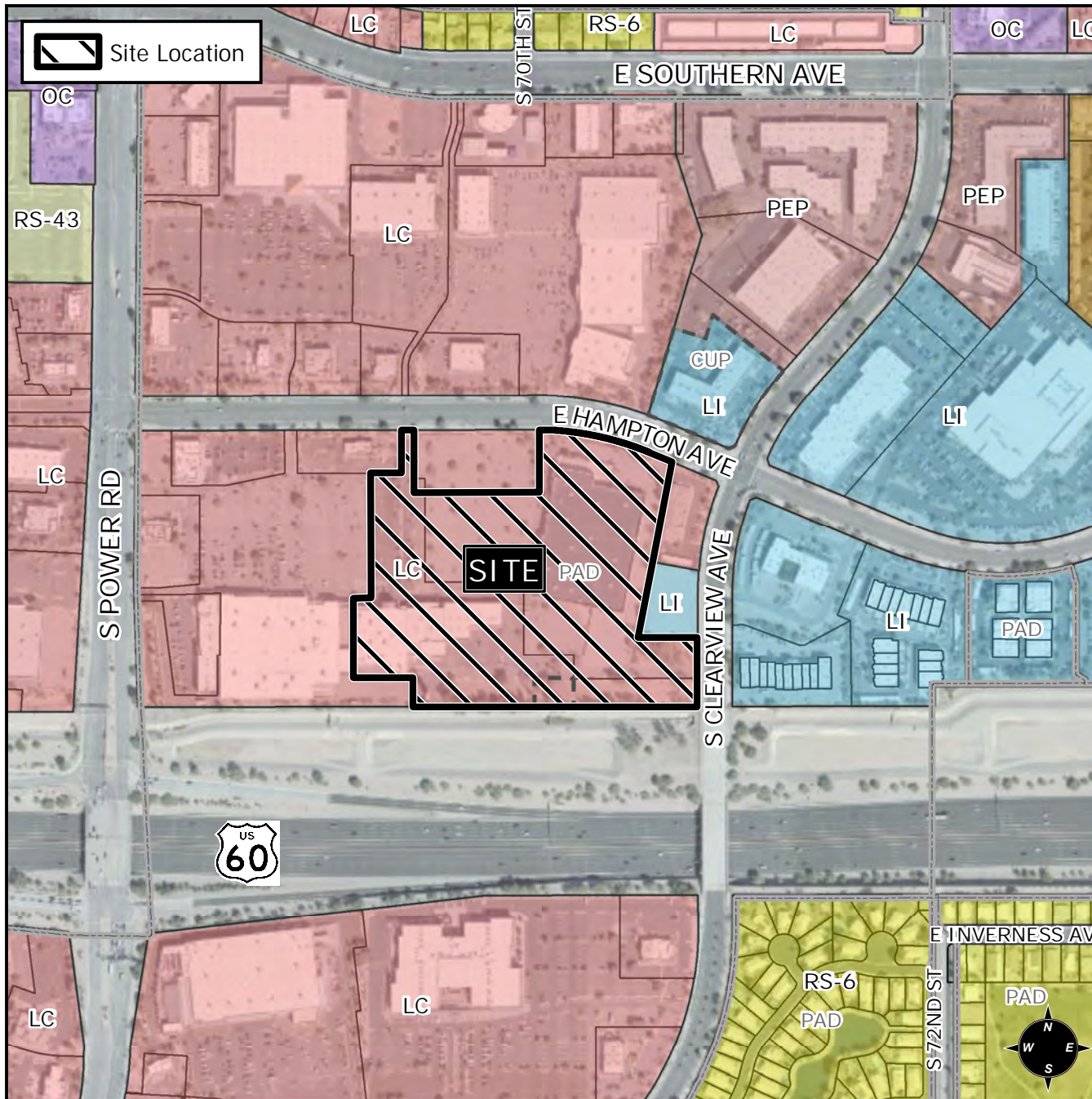


Planning and Zoning Vicinity Map: ZON21-00397



Case Details

CASE:

ZON21-00397

PRE-PLAT : ☐

SITE / ADDRESS:

District 6. Within the 6900 to 7200 blocks of East Hampton Avenue (south side) and within the 1500 block of South Clearview Avenue (west side). Located south of Southern Avenue and east of Power Road. (17.5± acres)

REQUEST:

Rezone from Limited Commercial with a Planned Area Development Overlay (LC-PAD) to Limited Commercial with a Planned Area Development Overlay (LC-PAD-PAD); Council Use Permit and Site Plan Review. This request will allow for a multiple residence development.

