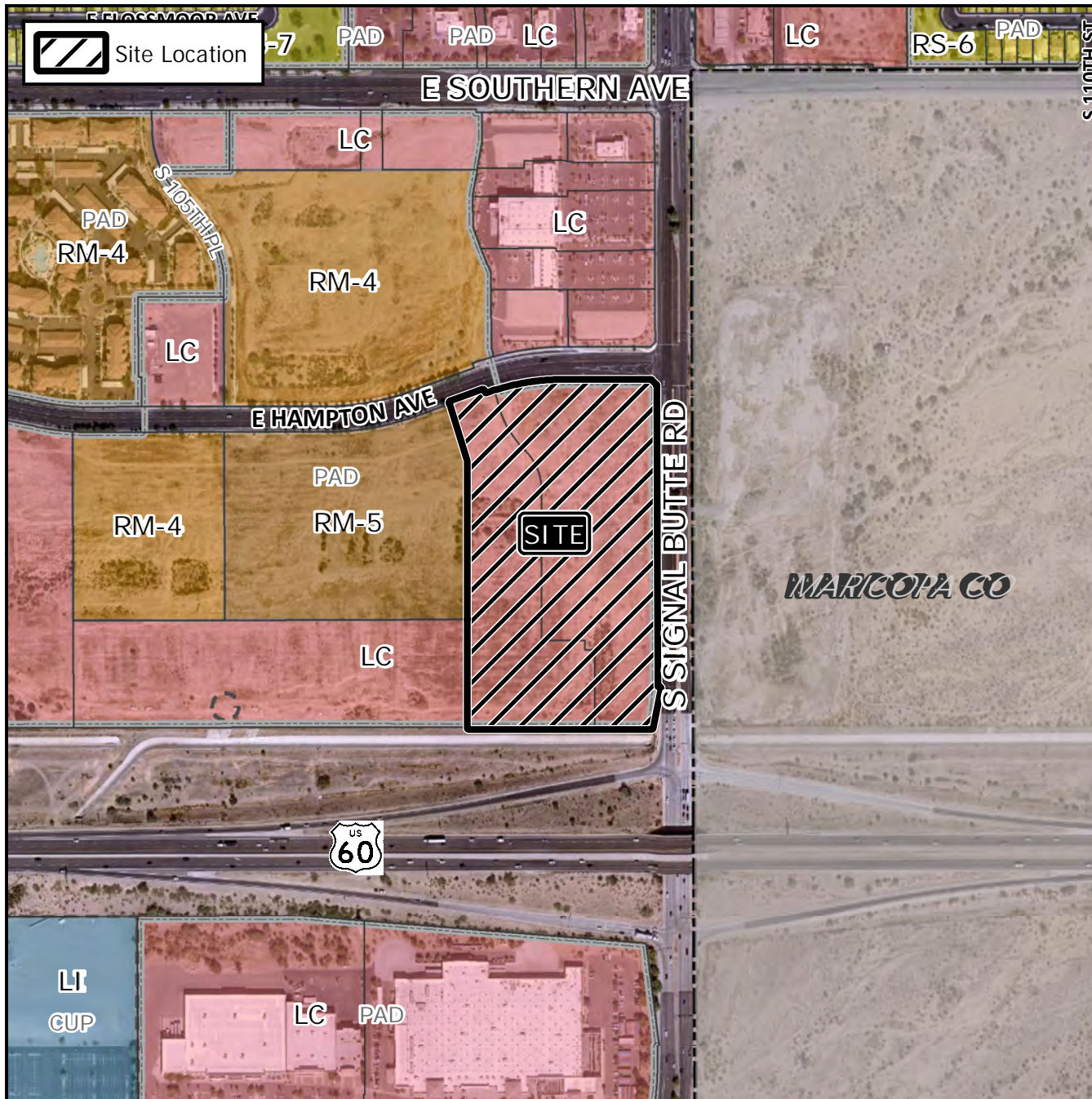


# Board of Adjustment Vicinity Map: BOA21-00600

## Case Details



Case:

BOA21-00600

Site / Address:

District 6. Within the 10700 block of East Hampton Avenue (south side) and within the 1400 to 1600 block of South Signal Butte Road (west side).

Request:

Requesting a Special Use Permit (SUP) for a Comprehensive Sign Plan (CSP) in the Limited Commercial District with a Planned Area Development Overlay (LC-PAD).



500

Feet

