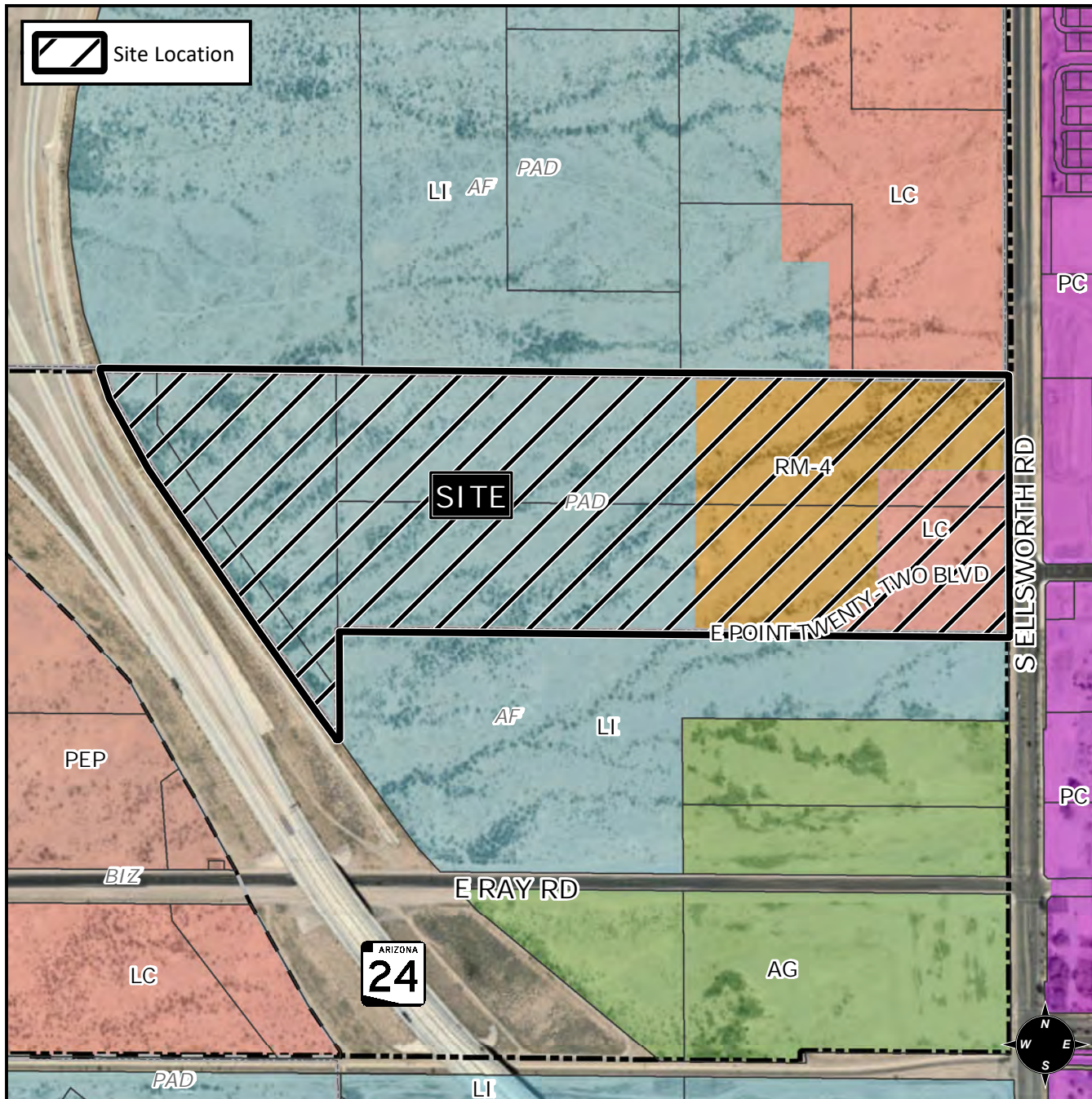


## Final Plat Vicinity Map



## Case Details

### Project:

View 202

### Site/Address:

District 6). Within the 4800 to 5000 blocks of South Ellsworth Road (west side). Located on the west side of Ellsworth Road north of Ray Road. (73.6± acres)

### Description:

Sunbelt Investment Holdings, Inc., Developer. Jerry Heath, Hunter Engineering, Surveyor.

