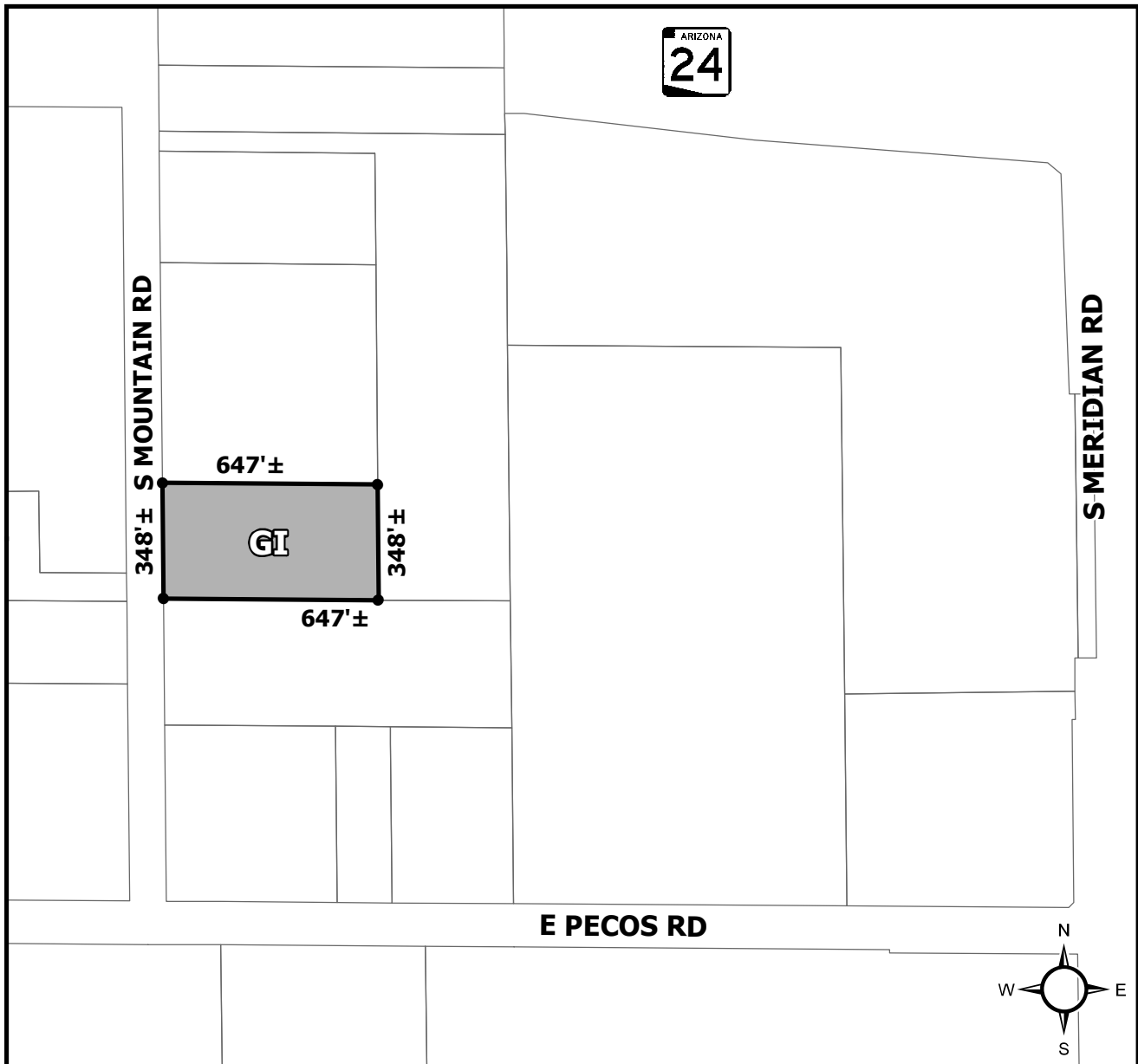




OFFICIAL SUPPLEMENTARY ZONING MAP AMENDING THE CITY OF MESA ZONING MAP



CASE: ZON20-00792

ACREAGE: 5.17±

REQUEST: REZONE FROM AGRICULTURAL (AG) TO GENERAL INDUSTRIAL (GI).

ORDINANCE: _____

Please be advised that the attached zoning changes were approved by the Mesa City Council on _____, 2021 by Ordinance # _____. If you have any questions concerning these changes, contact the City of Mesa Planning Division at 480-644-2385.

MAYOR

ATTEST: _____
CITY CLERK

DATE: _____