



CSP Revision

1400 S Dobson Rd, Mesa, AZ 85202

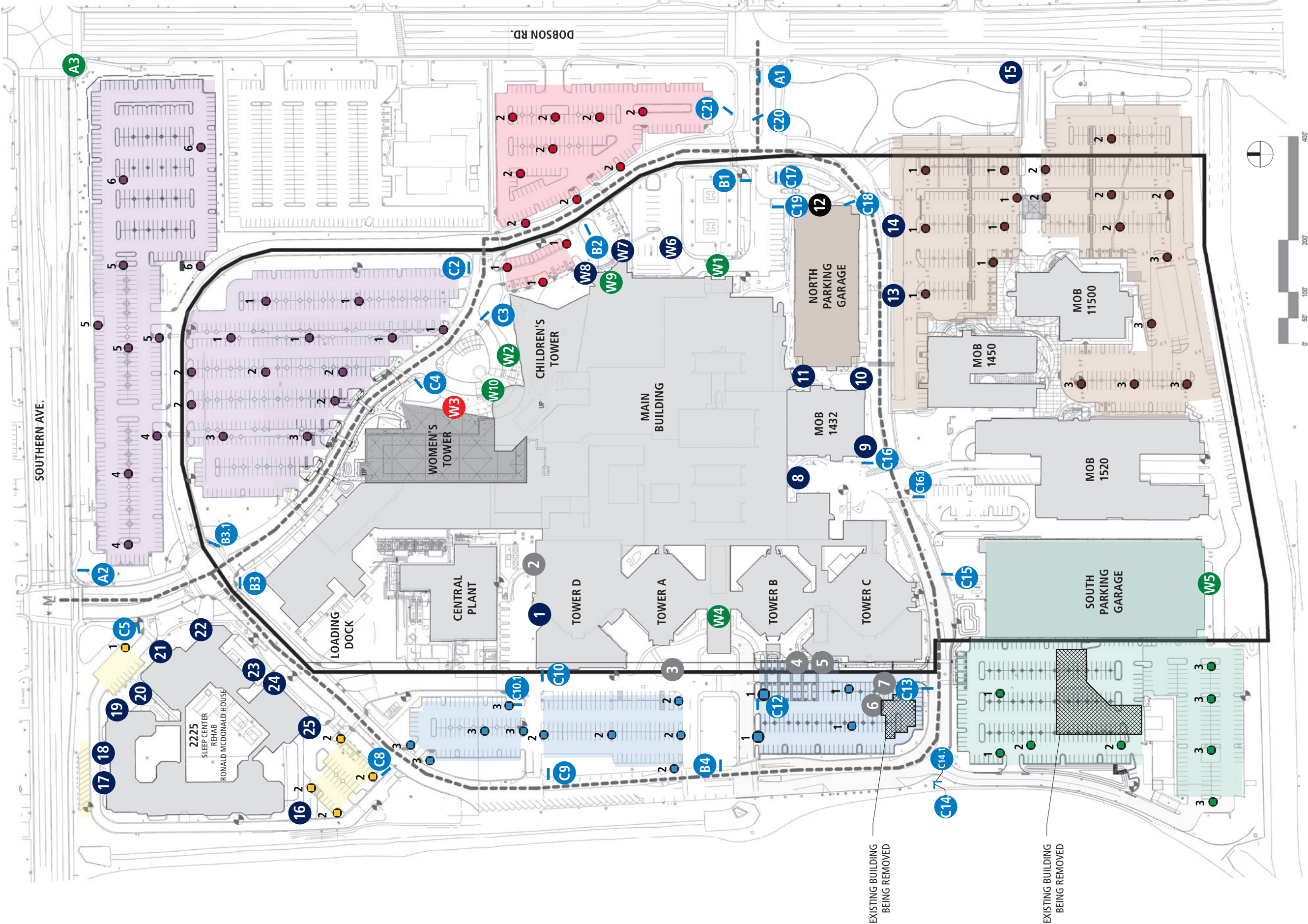
February 19, 2021

May 17, 2021

May 28, 2021

June 15, 2021

July 6, 2021



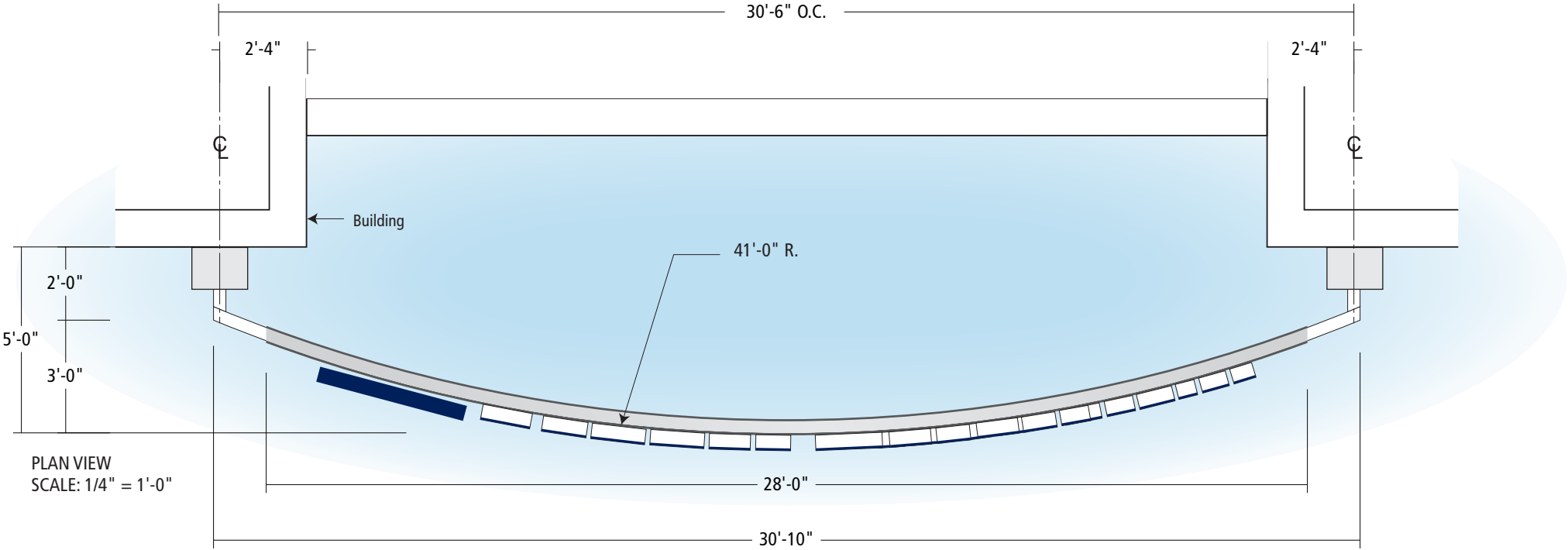
- NEW SIGN
EXISTING SIGN - REPLACEMENT
EXISTING SIGN - REFURBISH
EXISTING SIGN - NO CHANGE
EXISTING SIGN - REMOVE



Existing Photo

*APPROVED PER
PLN-2011-00178

EXISTING SIGNS - REMOVE ALL
NEW LOGO



W1 East Elevation - High Rise - EXISTING

- NEW** - 1. LOGO: Reverse pan channel with 5" returns painted to match Pantone 281 C Dark Blue. Halo illuminated with White LED modules. Mounted to radius structure with 1 1/2" standoffs.
- NEW** - 2. LETTERS: Pan channel letters with 5" returns and White translucent acrylic faces with perforated vinyl overlay painted to match Pantone 281C Dark Blue. Returns of letters to be painted white, dark blue trim caps to match Pantone 281C. Illuminated with White LED modules. Letters to be flush mounted to radius structure.
- REPAINT** - 3. Existing Radius face. Repaint in field Matthews White. (Currently Matthews Brushed Aluminum)

EXISTING SQ. FT = 157.5

NEW SQ. FT. = 137.5





Existing Photo



Existing Photo



W2 LOCATION: North Elevation
Scale: 1/8" = 1'-0"

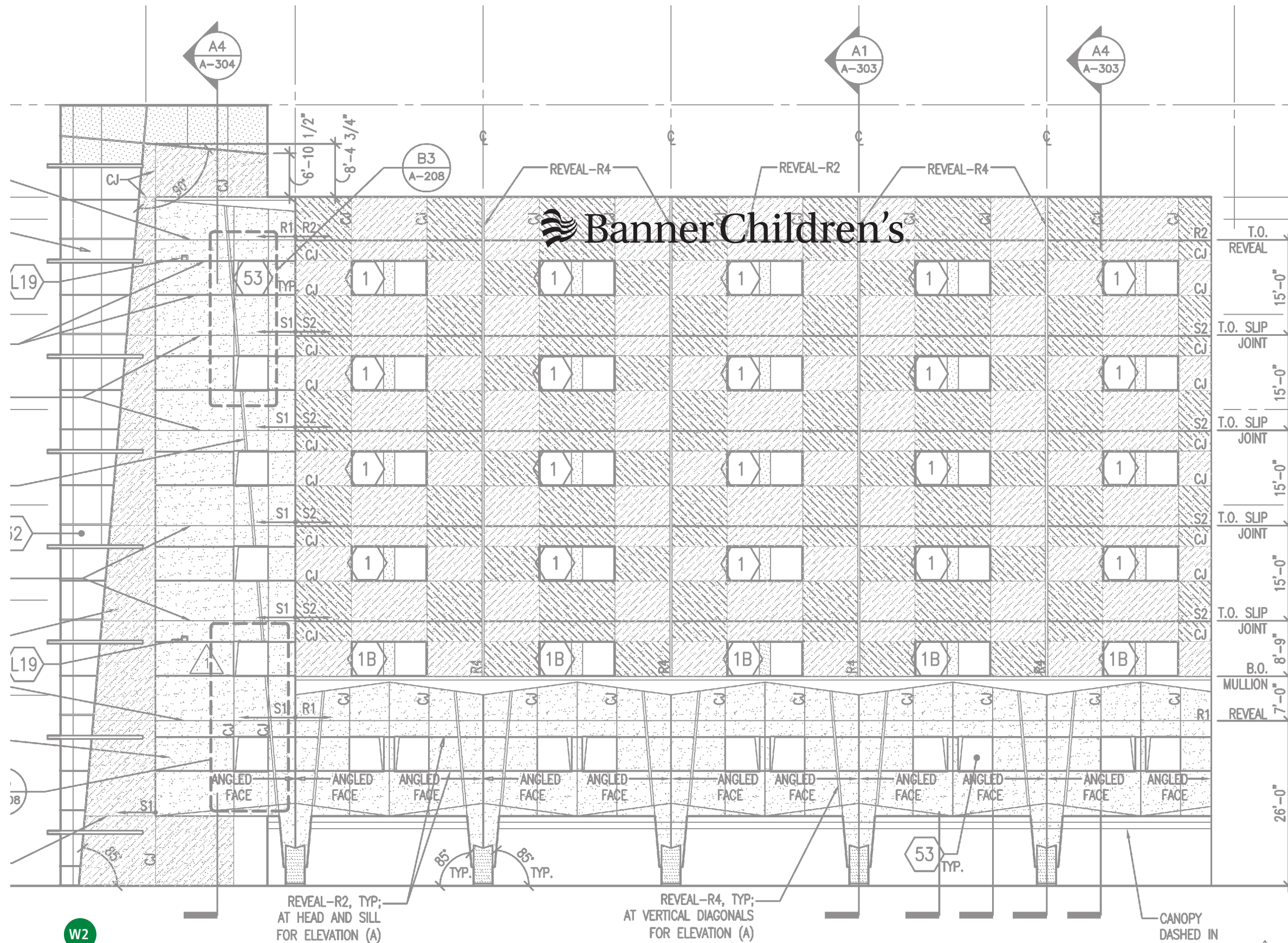
EXISTING SQ. FT = 214
NEW SQ. FT. = 334.25

NEW - LOGO - Reverse pan channel with 5" returns and 1 1/2" stand-offs, painted White - halo illuminated w/ White LEDs.

NEW - LETTERS - Pan channel letters with 5" returns and translucent white acrylic faces - face illuminated w/ white LEDs. White returns, white trim caps.

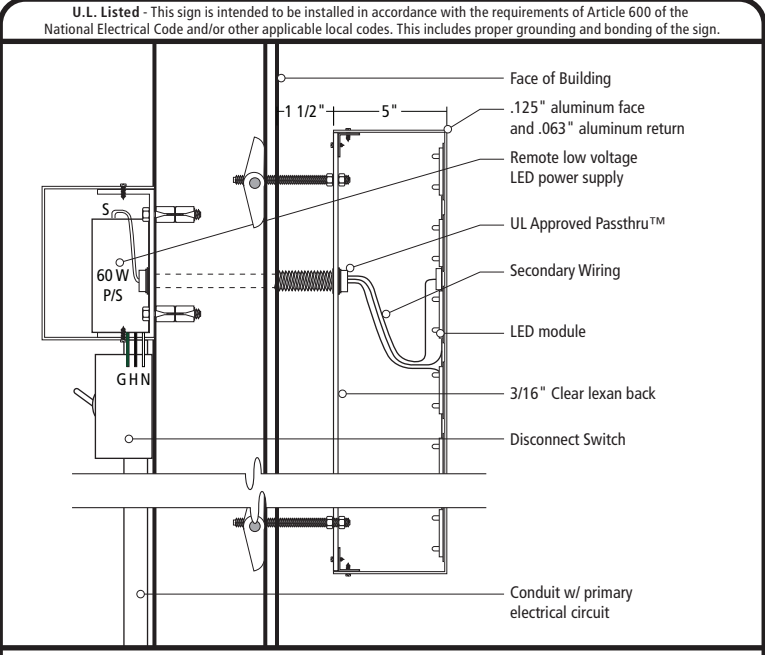
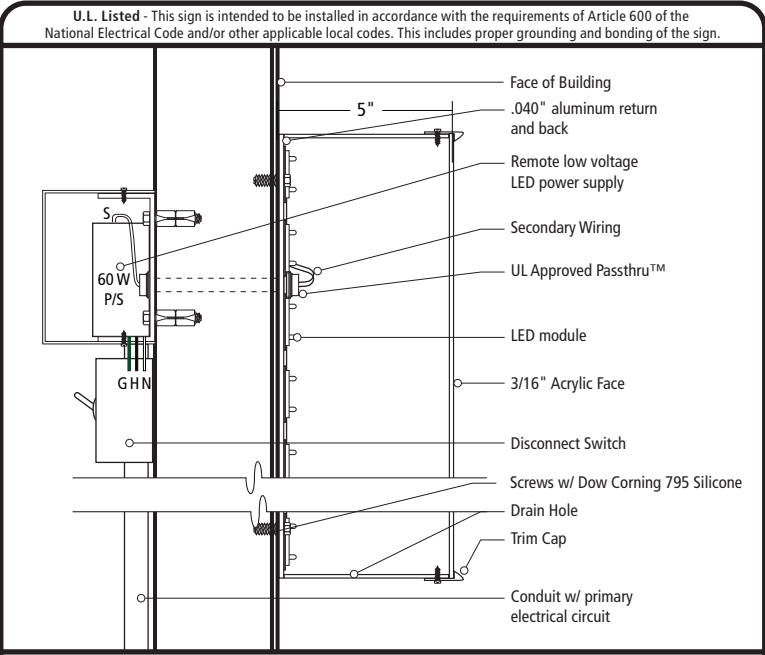
Letters to be flush mounted onto wall.

Power Requirement: 277 V - 30 amps.



D1 EXTERIOR ELEVATION A

Scale: 1/16" = 1'-0"



W3 LOCATION: West Elevation
Scale: 1/8" = 1'-0"

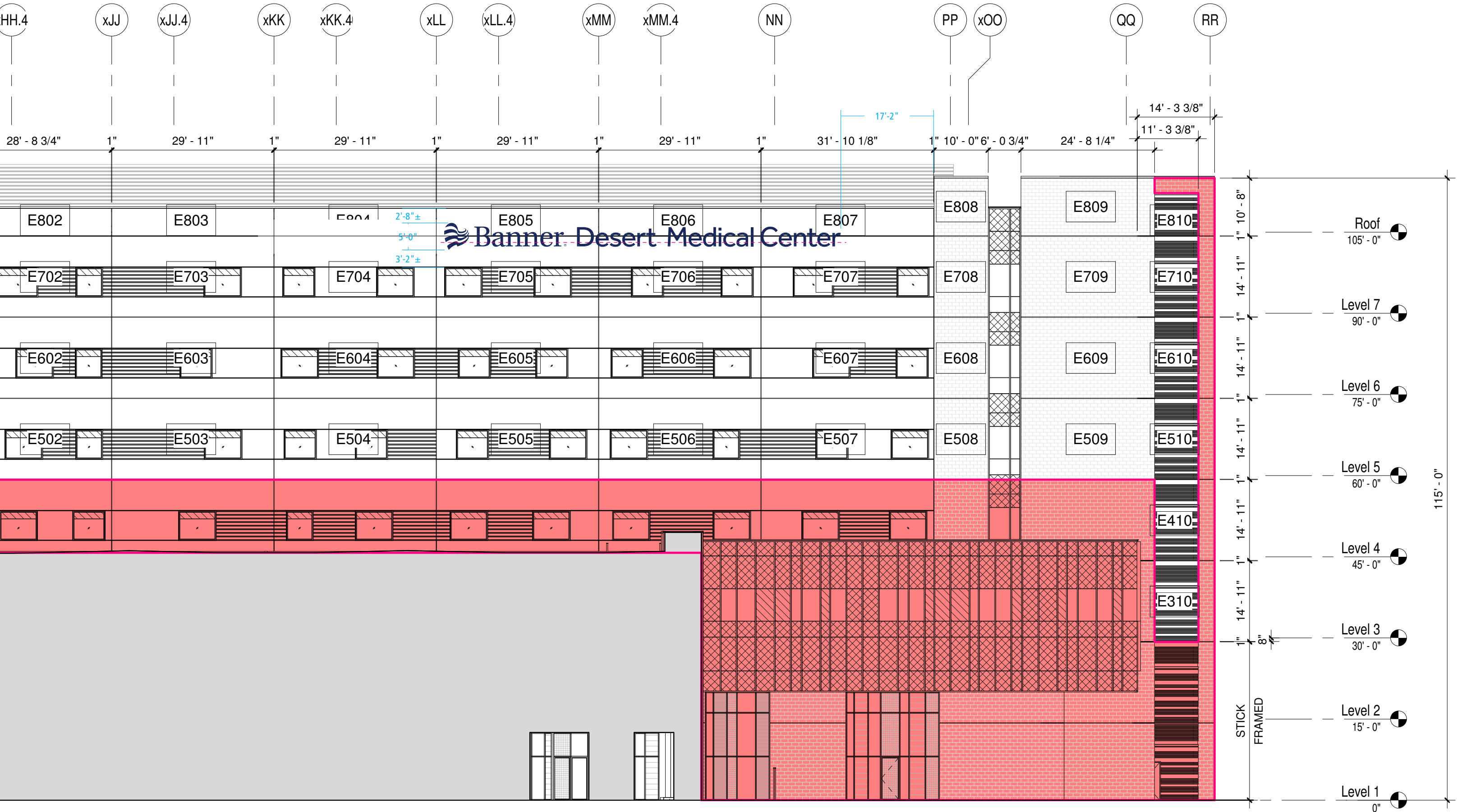
NEW SQ. FT. = 366.5

ELECTRICAL PENETRATIONS - LOW ON LETTERS
VERIFY

NEW - LOGO: Reverse pan channel with 5" returns painted to match Pantone 281 C Dark Blue. Halo illuminated with White LED modules. Mounted to wall with 1 1/2" standoffs.

NEW - LETTERS: Pan channel letters with 5" returns and White translucent acrylic faces with perforated vinyl overlay painted to match Pantone 281C Dark Blue. Returns of letters to be painted white, dark blue trim caps to match Pantone 281C. Illuminated with White LED modules. Letters to be flush mounted to wall.

Power Requirement: 277 V - 8.4 amps. (12 power supplies, .7 amps each)



W3

NEW Tower - West Elevation
Scale: 1/16" = 1'-0"

SMITHCRAFT
CUSTOM ARCHITECTURAL SIGNS

3643 South 7th Street
Phoenix, AZ 85040.1130
602.268.1349 ph
smithcraftsigns.com

Fabrication information shown here is the
exclusive property of F & N Enterprises dba
SmithCraft and may not be used for
fabrication by any other company without
authorization from an officer of F & N.

REP: B. McMillen
BY: D. Rollins
DATE: 2/19/2021

RE: 5/17/2021
5/28/2021
6/15/2021
7/6/2021

SPEC NO.

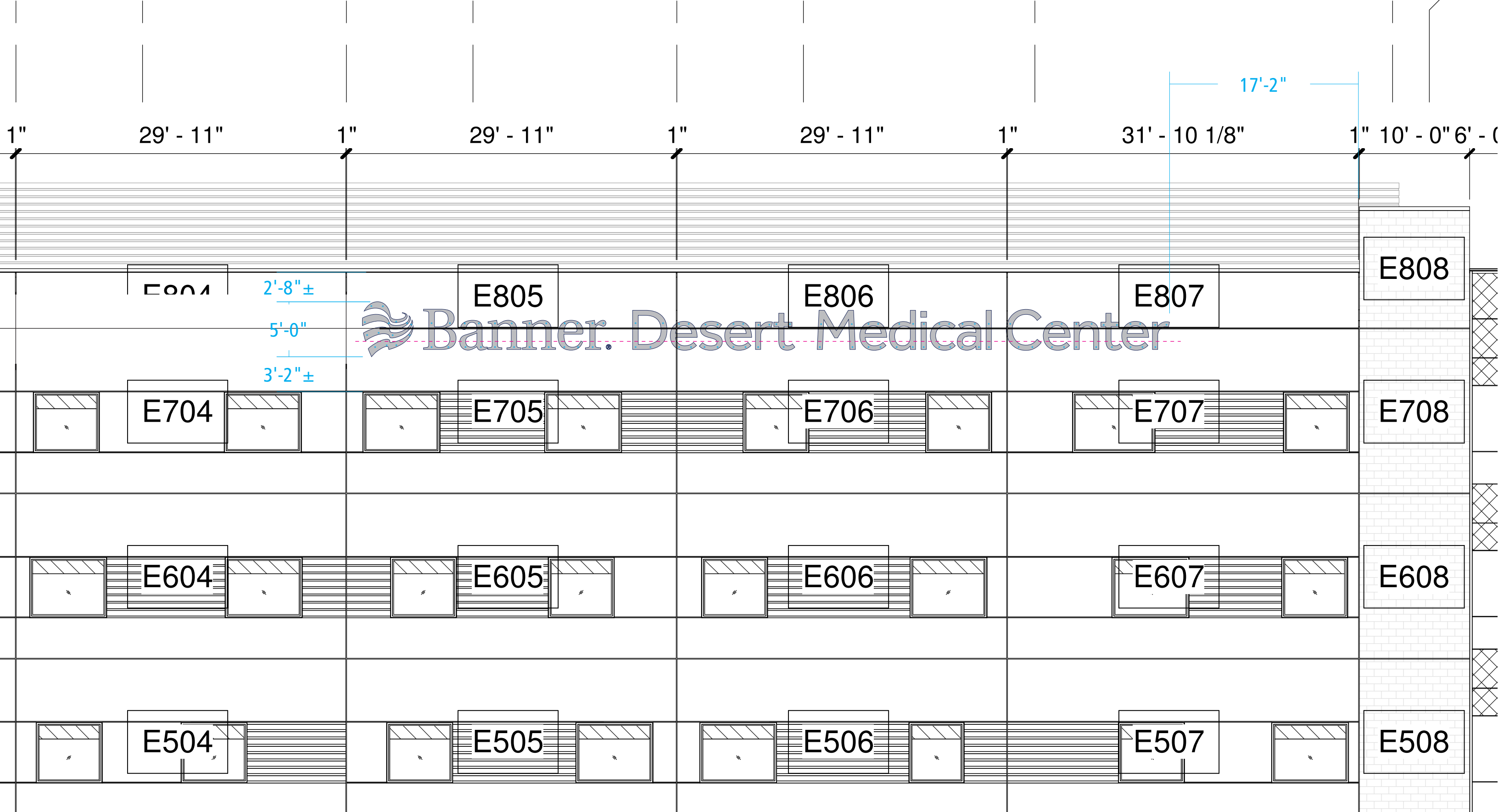
JOB NO.
2B-021801

Banner Desert
CSP 2021

Address: 1400 S Dobson Rd., Mesa, AZ 85202

SIGN TYPE
W3
East Elevation

SHEET
7 of 21



W3

NEW Tower - West Elevation
Scale: 1/8" = 1'-0"

SMITHCRAFT
CUSTOM ARCHITECTURAL SIGNS

3643 South 7th Street
Phoenix, AZ 85040.1130
602.268.1349 ph
smithcraftsigns.com

Fabrication information shown here is the
exclusive property of F & N Enterprises dba
SmithCraft and may not be used for
fabrication by any other company without
authorization from an officer of F & N.

REP: B. McMillen
BY: D. Rollins
DATE: 2/19/2021

RE: 5/17/2021
5/28/2021
6/15/2021
7/6/2021

SPEC NO.

JOB NO.
2B-021801

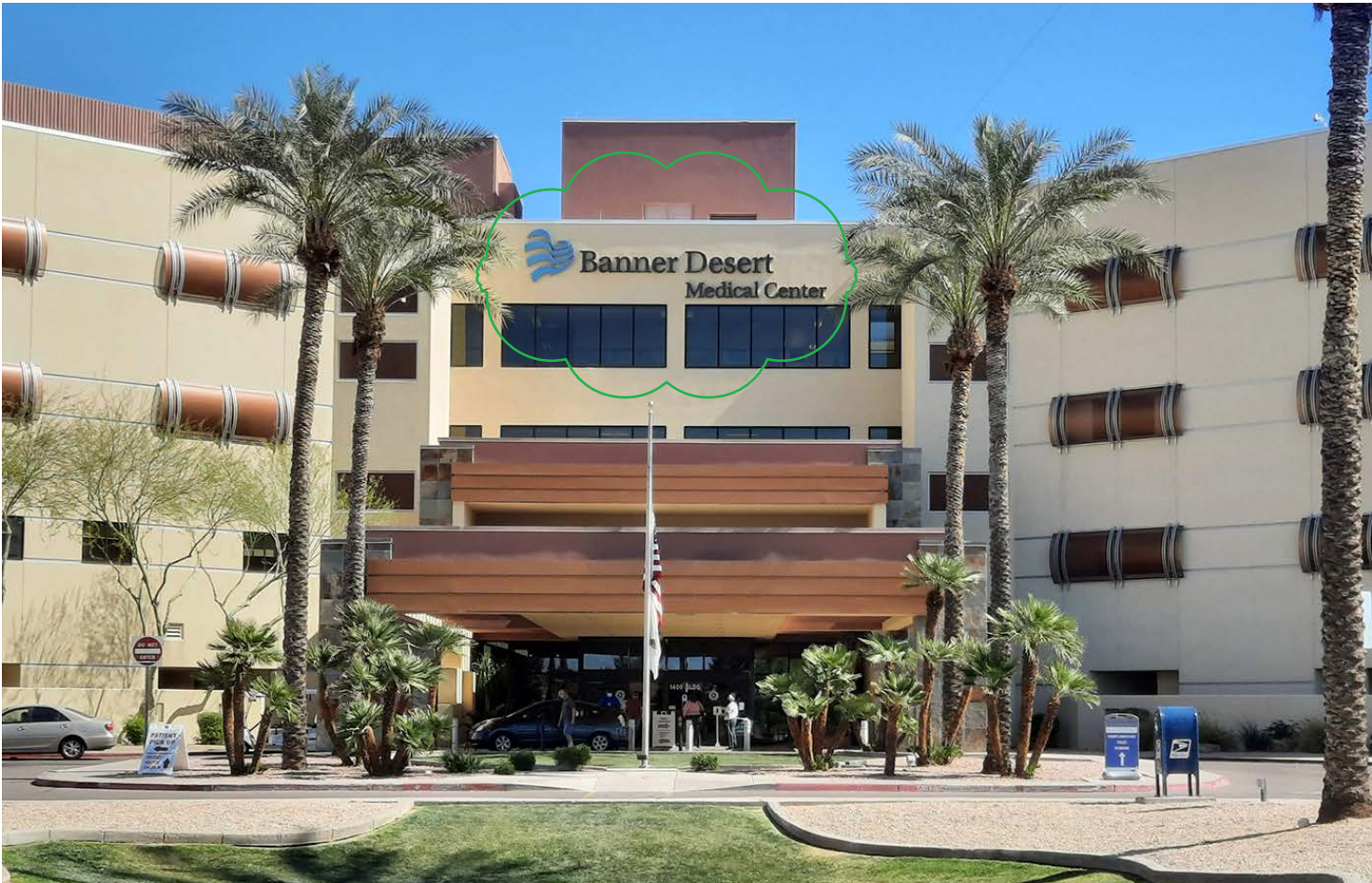
Banner Desert
CSP 2021

Address: 1400 S Dobson Rd., Mesa, AZ 85202

SIGN TYPE
W3
East Elevation

SHEET
8 of 21

*EXISTING



EXISTING



NEW

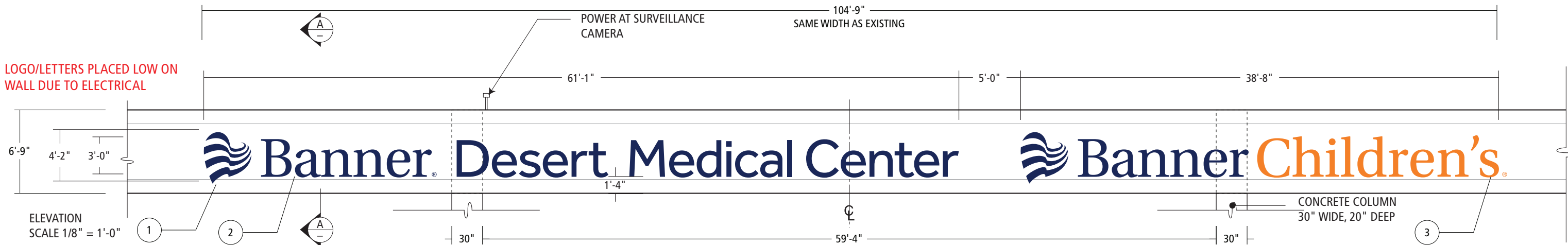


W4 LOCATION: West Elevation
Scale: 1/8" = 1'-0"
EXISTING SQ. FT = 320±
NEW SQ. FT. = 296

LOCATION: West Main Entrance

NEW - LOGO: Reverse pan channel with 5" returns painted to match Pantone 281 C Dark Blue. Halo illuminated with White LED modules. Mounted to fascia with 1 1/2" standoffs.

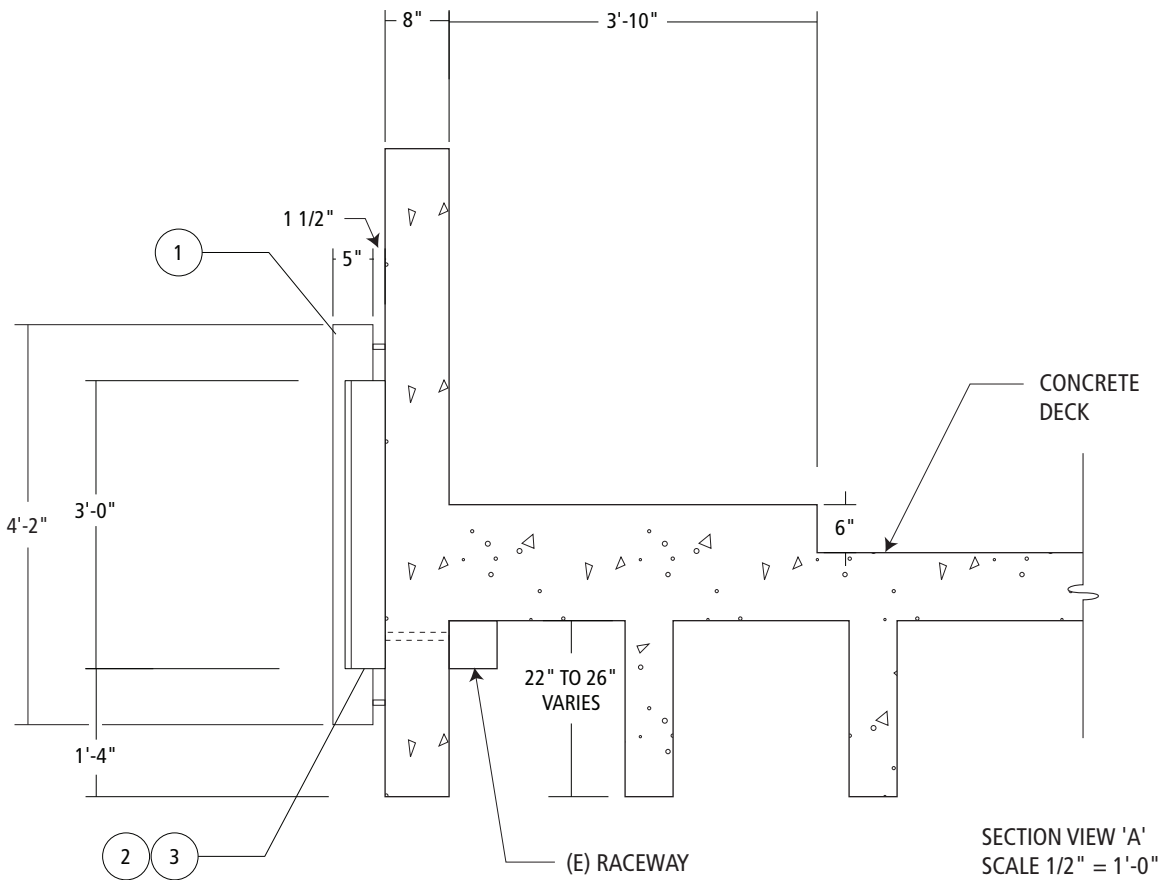
NEW - LETTERS: Pan channel letters with 5" returns and White translucent acrylic faces with perforated vinyl overlay painted to match Pantone 281C Dark Blue. Returns of letters to be painted white, dark blue trim caps to match Pantone 281C. Illuminated with White LED modules. Letters to be flush mounted to fascia



EXISTING SQ. FT = 680
NEW SQ. FT. = 436.5

W5 LOCATION: South Elevation Parking Garage

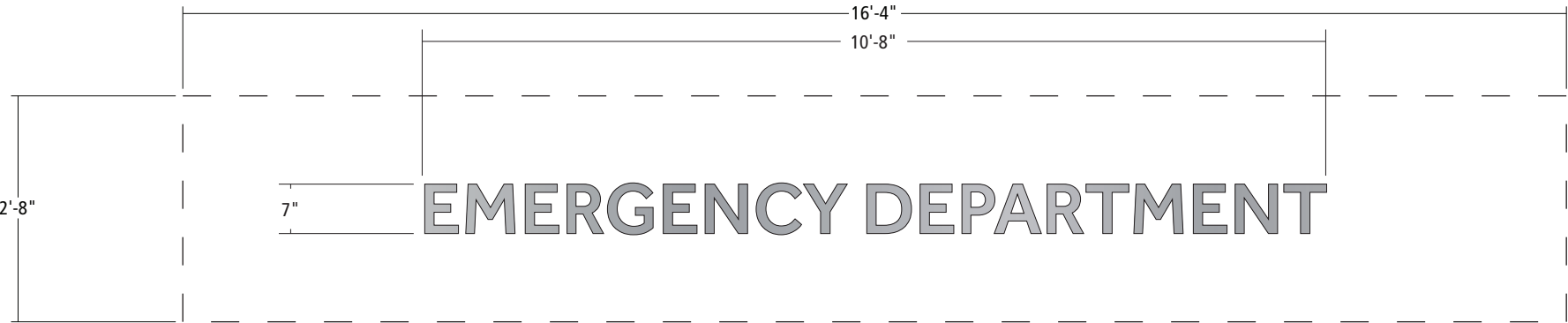
- NEW - 1. LOGO: Reverse pan channel with 5" returns painted to match Pantone 281 C Dark Blue. Halo illuminated with White LED modules. Mounted to garage fascia with 1 1/2" standoffs.
- NEW - 2. LETTERS: Pan channel letters with 5" returns and White translucent acrylic faces with perforated vinyl overlay painted to match Pantone 281C Dark Blue. Returns of letters to be painted white, dark blue trim caps to match Pantone 281C. Illuminated with White LED modules. Letters to be flush mounted to garage fascia.
- NEW - 3. "Children's": Pan channel letters with 5" returns and White translucent acrylic faces with 3M Translucent Tangerine 230-84 vinyl to match Pantone 158 C . Returns of letters to be painted white, Orange trim cap to match Pantone 158 C Orange. Illuminated with White LED modules. Letters to be flush mounted to garage fascia.



Existing Photo



Existing Photo



Elevation
Scale: 1/2" = 1'-0"

W9

Entrance Logo - FCO's
Quantity = 1 set

EXISTING SQ. FT = 27.8
NEW SQ. FT. = 6.2

NEW - 1" aluminum FCO letters. Painted MAP Brushed Aluminum.
Flush pin mounted to building entrance.
FONT: Effra Medium

NOTE: Substrate is uneven ledgestone.

EXISTING SIGNS - REMOVE ALL
NEW FCOS



Existing Photo



Elevation
Scale: 1/2" = 1'-0"

W10

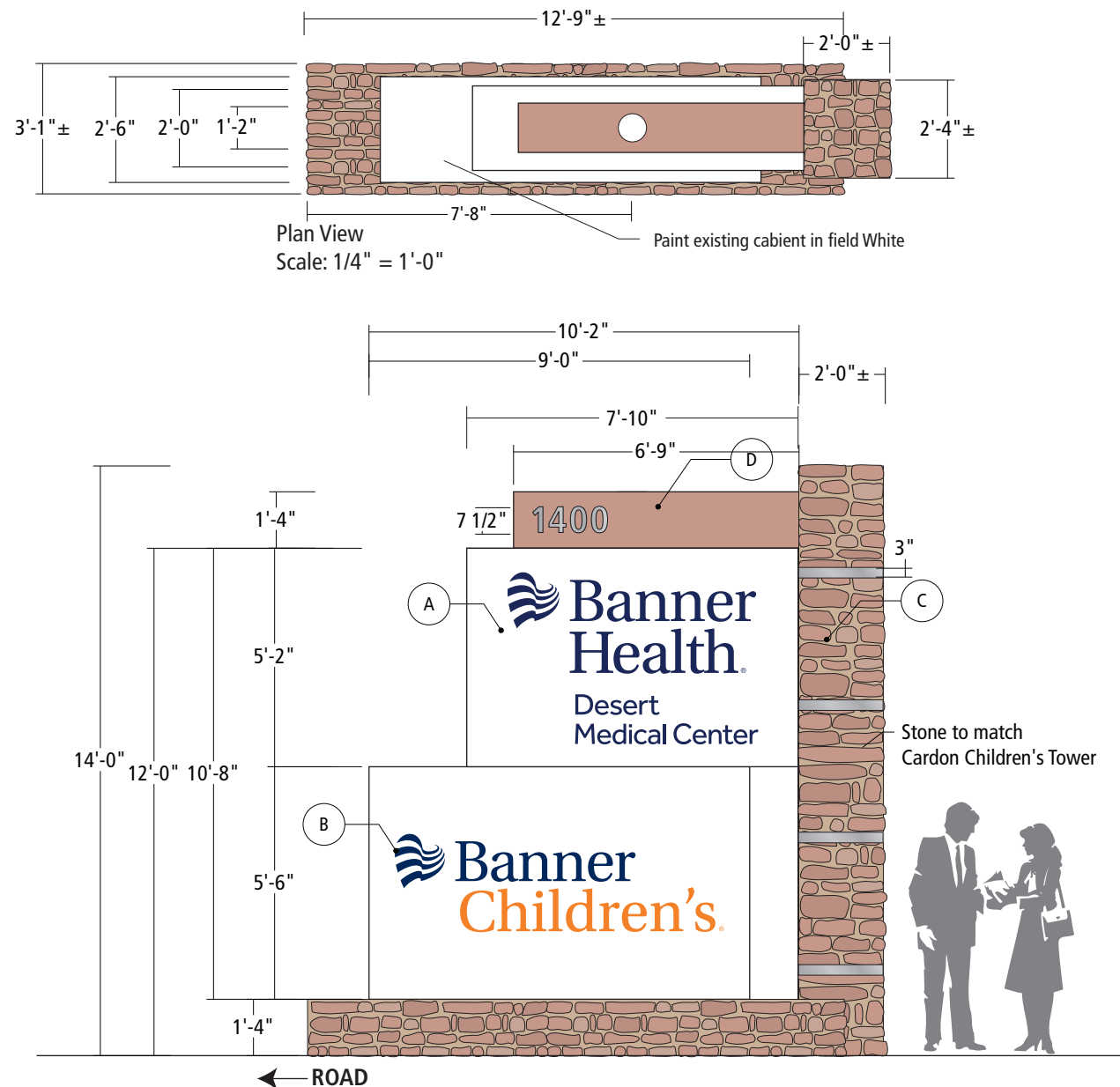
Entrance Logo - FCO's
Quantity = 1 set

EXISTING SQ. FT = 45.8
NEW SQ. FT. = 3.9

NEW - 1" aluminum FCO letters. Painted MAP Brushed Aluminum.
Flush pin mounted to building entrance.
FONT: Effra Medium

NOTE: Substrate is uneven ledgestone.

EXISTING SIGNS - REMOVE ALL
NEW FCOS



A A1 & A2 - Freestanding Primary Campus Identity at Main Entries
Elevation
Scale: 1/4" = 1'-0"
Quantity: 2 Double Faced - One per entry - 90 sq. ft.

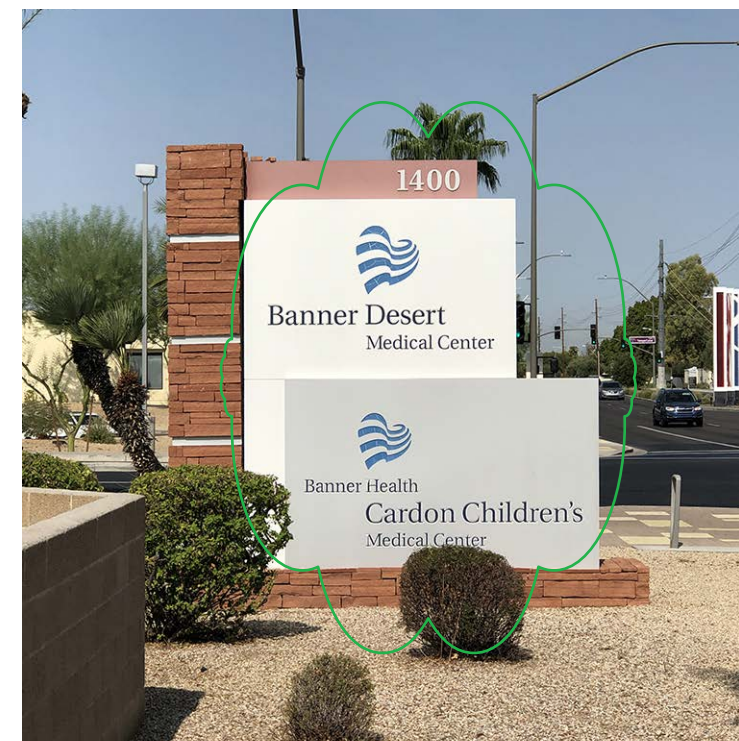
- A. **NEW LOGO** - Fabricated aluminum double face sign cabinet painted MAP Brushed Aluminum. Routed out copy, back with translucent white acrylic and internally illuminated using HO Fluorescent lamps. 3M TPerforated vinyl painted Pantone 281 C Dark Blue.
- B. **NEW LOGO** - Fabricated aluminum double face sign cabinet painted MAP Brushed Aluminum. Routed out copy, back with translucent white acrylic and internally illuminated using HO Fluorescent lamps. 3M TPerforated vinyl painted Pantone 281 C Dark Blue. 3M Translucent Tangerine vinyl for "Children's"
- C. Existing - Remain as is - Decorative masonry. Stone (Red Sandstone) to match stone used on Children's Hospital entrance. Horizontal aluminum accent bars in stone painted MAP Brushed Aluminum
- D. Existing - Remain as is - Fabricated aluminum decorative "fin" painted to match Sherwin Williams "Reddened Earth" (SW6053) as used on Children's Hospital. 1/4" aluminum FCO address numbers to be painted MAP Brushed Aluminum (double faced).

*APPROVED PER
BA09-016

EXISTING SIGNS
NEW LOGO PANELS



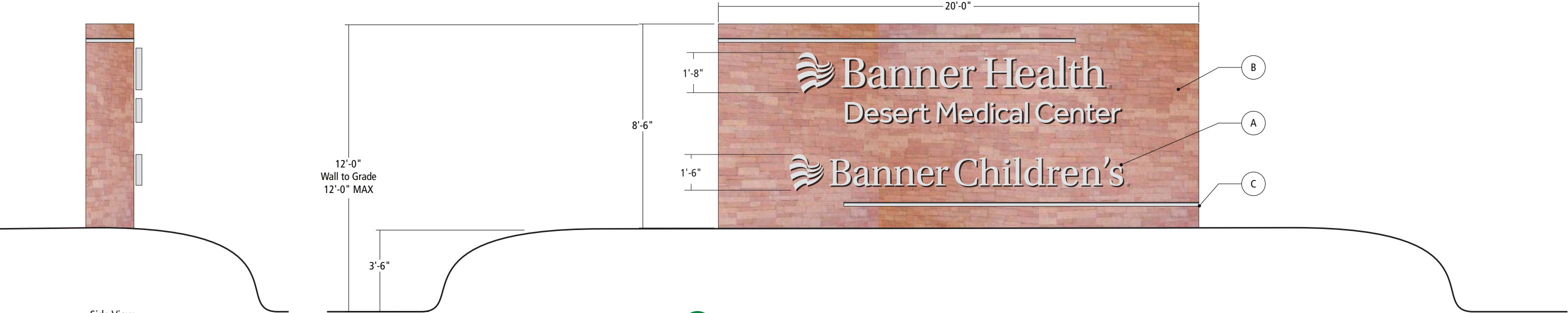
Existing Photo



Existing Photo



Existing Photo



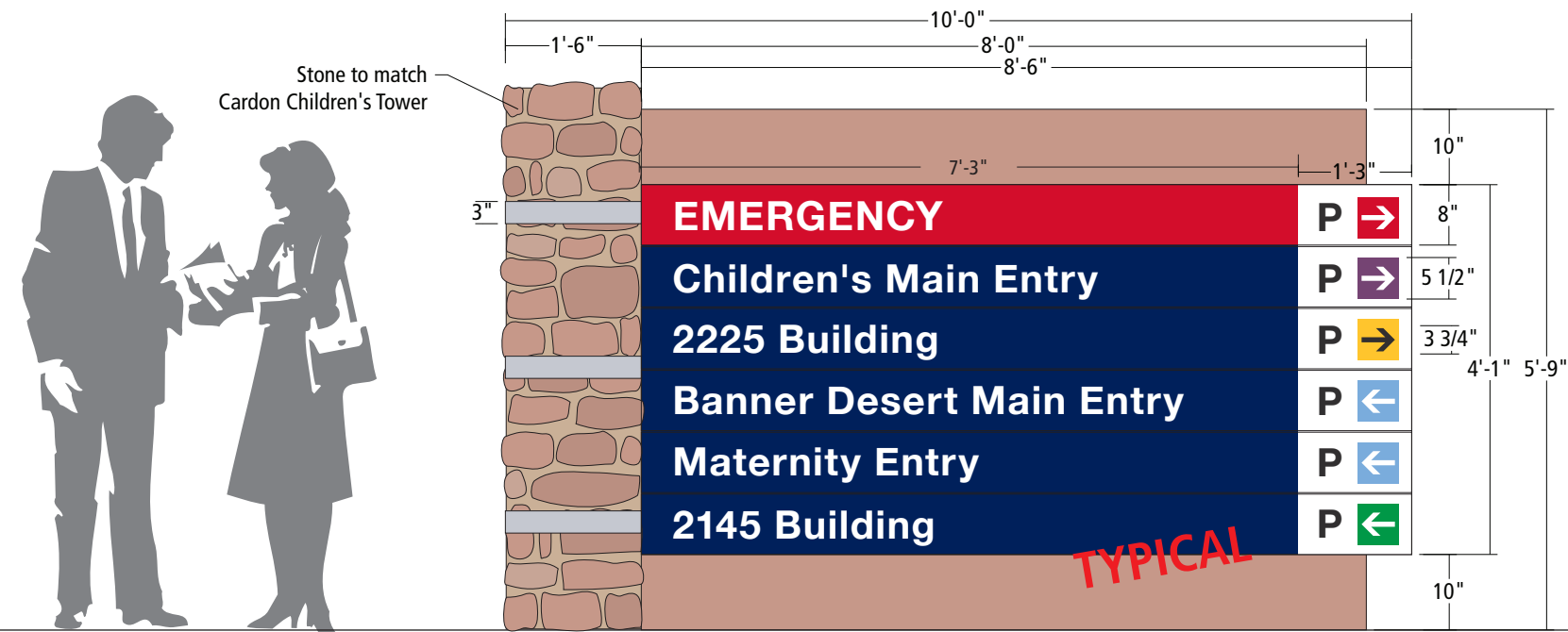
EXISTING SQ. FT = 170
NEW SQ. FT. = 170

- A3
- A3 - Freestanding Primary Campus Identity at Dobson & Southern
Scale: 1/4" = 1'-0"
Quantity: 1 Single Faced - Illuminated
Corner Feature - 170 sq. ft.

A. **NEW LOGO** - 3" deep Aluminum RPC Letters painted MAP Brushed Aluminum.
Halo -illuminated using LED's and 1" stand-off from wall.

B. Existing - Remain as is - Decorative masonry. Stone (Red Sandstone) to match stone used on Children's Hospital entrance.

C. Existing - Remain as is - Fabricated aluminum accent painted MAP Brushed Aluminum. Inset into stone wall.



B

Freestanding Internally Illuminated Directional Sign

Elevation
Scale: 1/2" = 1'-0"
Quantity: 5 S/F or D/F

Existing - Fabricated aluminum sign cabinet painted to match Sherwin Williams "Reddened Earth" (SW6053).
NEW - Aluminum removable sign panels attached to aluminum sign cabinet, painted to match Pantone 281 C Dark Blue.
EMERGENCY panels painted to match PMS 186C Red.
Text to be routed and backed with white translucent acrylic.
White area to be painted white. "P" routed out and backed with black / white acrylic.
Square routed out and back with translucent white acrylic.
Zone color square to be 3M Translucent vinyl applied to panels.
Existing - Internally illuminated using HO Fluorescent lamps.
Existing - Aluminum accent bars in stone painted MAP Brushed Aluminum.
Existing - Stone to match existing stone at Children's

TEXT SHOWN FOR EXAMPLE ONLY

- | | |
|------------|---|
| RED | 3M Lt Tomato (230-43) to match PMS 186C |
| LIGHT BLUE | 3M Deep Sky Blue (230-147) |
| YELLOW | 3M Mango (230-125) |
| GREEN | 3M Kelly Green (230-146) |
| VIOLET | 3M Plum Purple (230-128) |
| BROWN | 3M Rust Brown (230-63) |
| BLACK | 3M Matte Black (220-22) |



Existing Photo



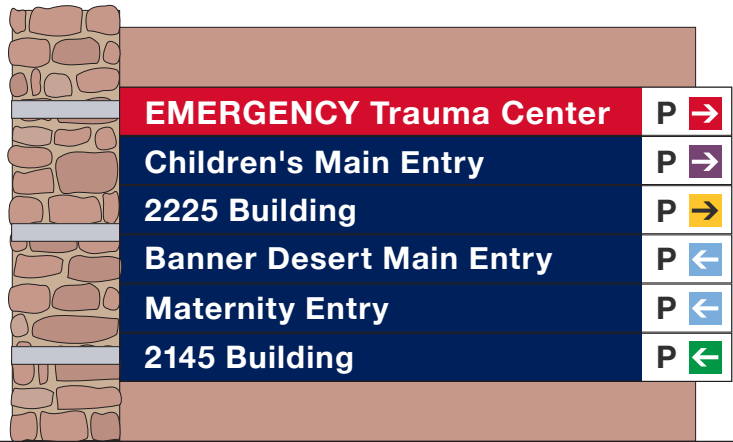
Type B3 - Single Faced
North Face
Scale: 3/8" = 1'-0"



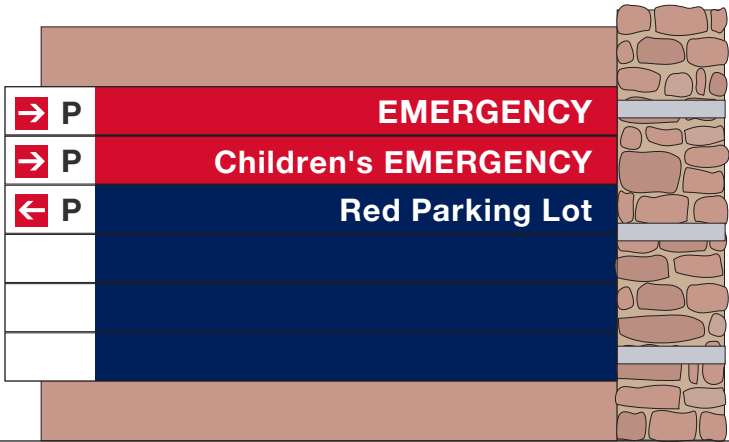
Type B3.1 - Single Faced
North Face
Scale: 3/8" = 1'-0"



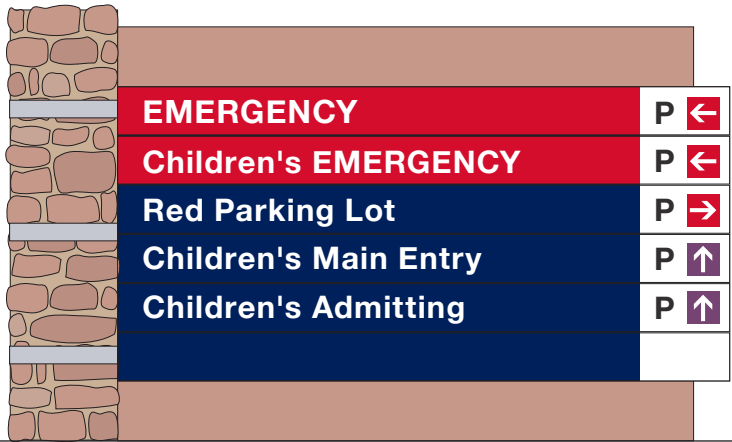
Existing Photo



Type B1 - Single Faced
East Face
Scale: 3/8" = 1'-0"



Type B2 - Double Faced
North Face - REMAIN AS IS
Scale: 3/8" = 1'-0"



Type B2 - Double Faced
South Face
Scale: 3/8" = 1'-0"



Existing Photo



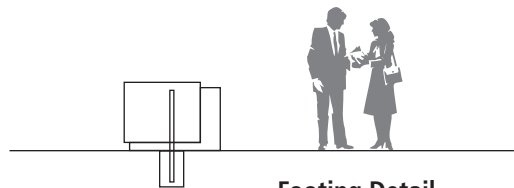
Type B4 - Double Faced
North Face - REMAIN AS IS
Scale: 3/8" = 1'-0"



Type B4 - Double Faced
South Face
Scale: 3/8" = 1'-0"



Existing Photo

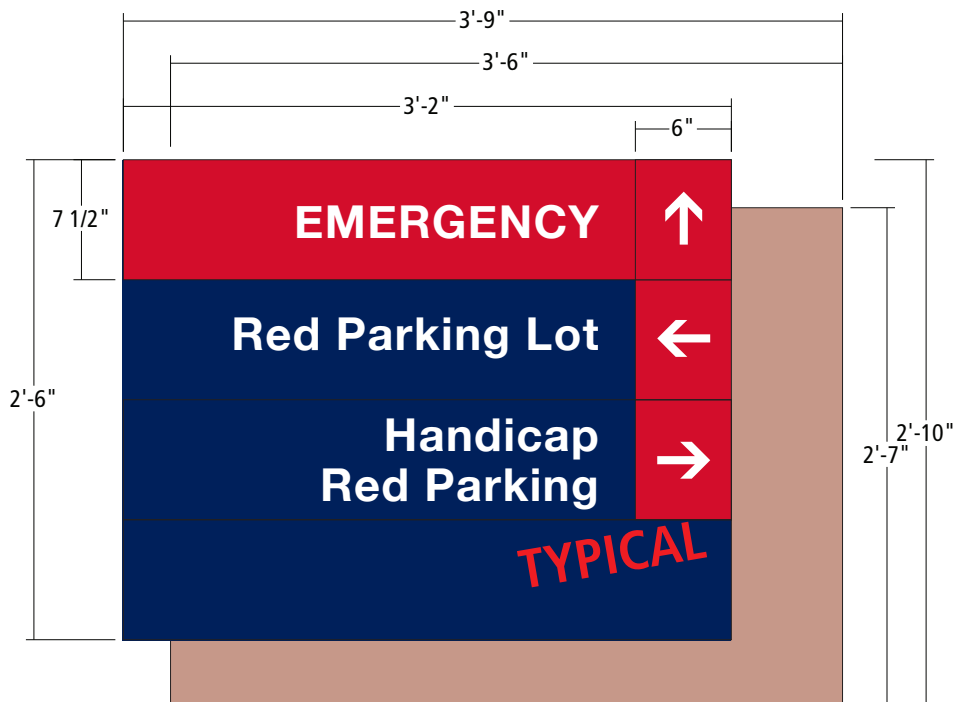


Footing Detail
Scale: 1/8" = 1'-0"

2" dia. standard pipe
1'-0" dia. x 1'-6" deep
concrete caisson footing
Sign Area: 10 square feet



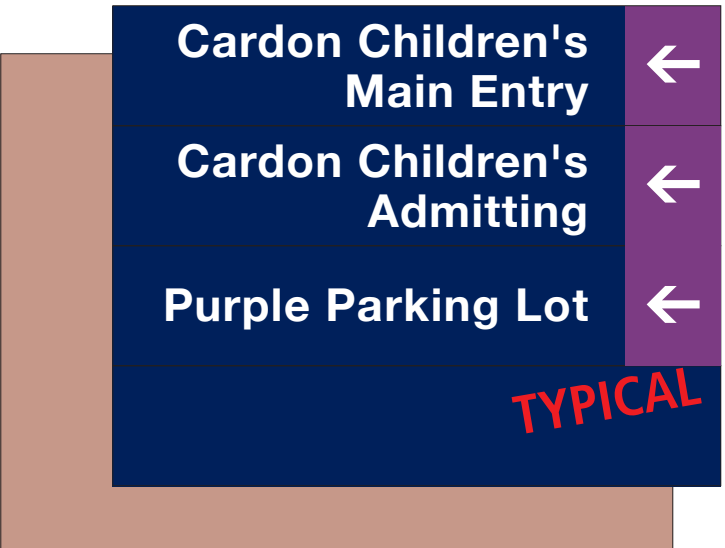
Plan View



Side A



Front



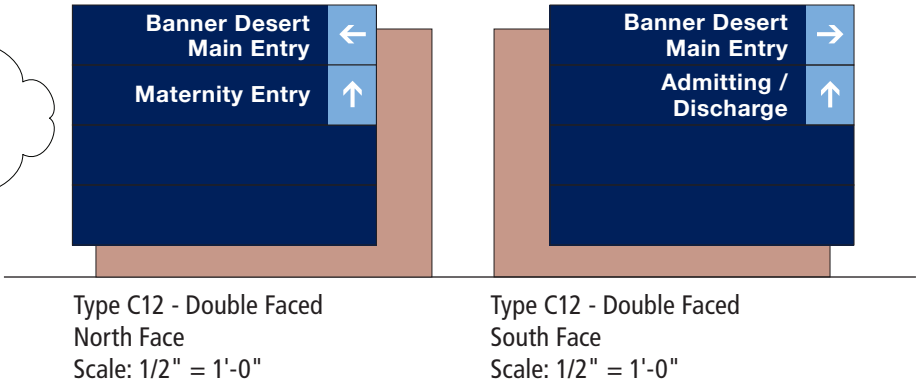
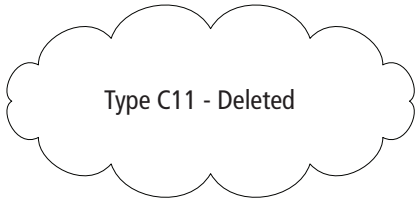
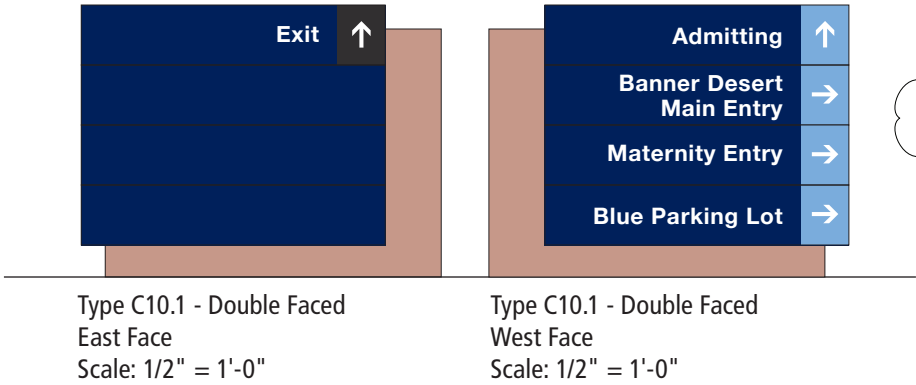
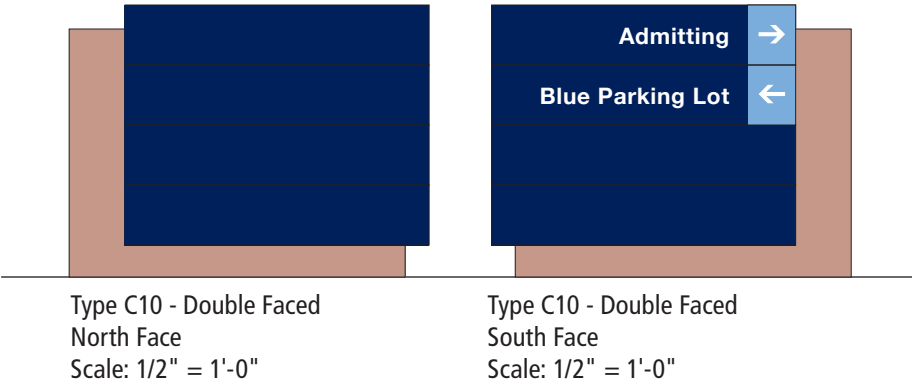
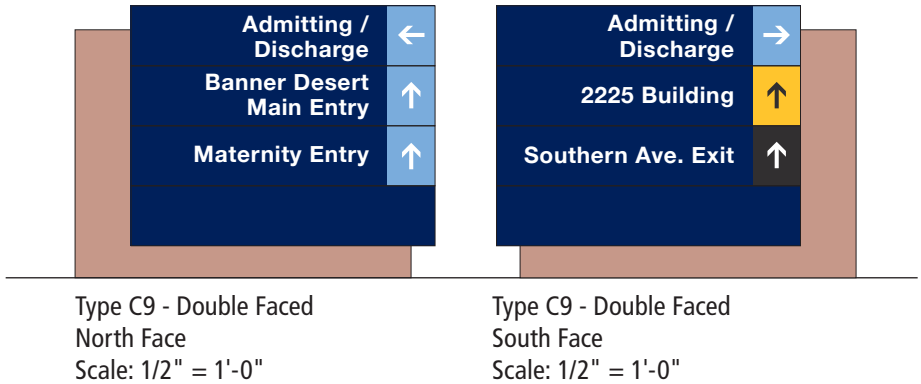
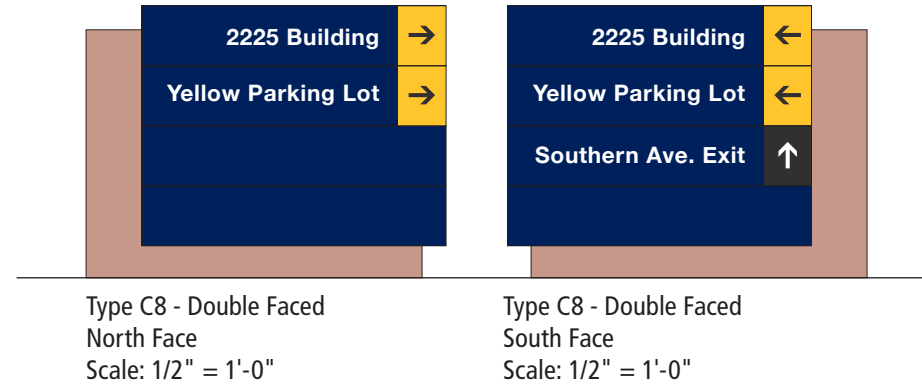
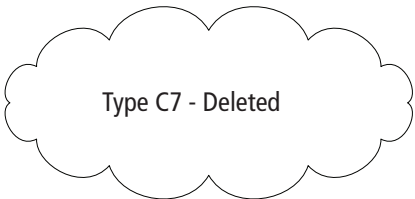
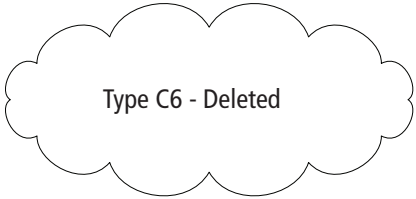
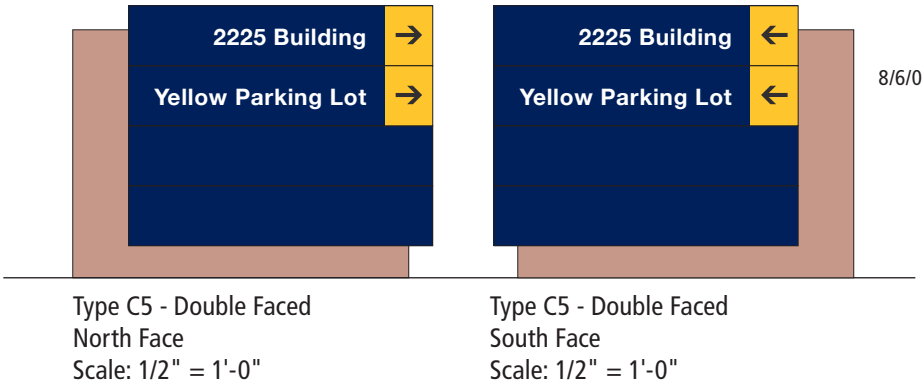
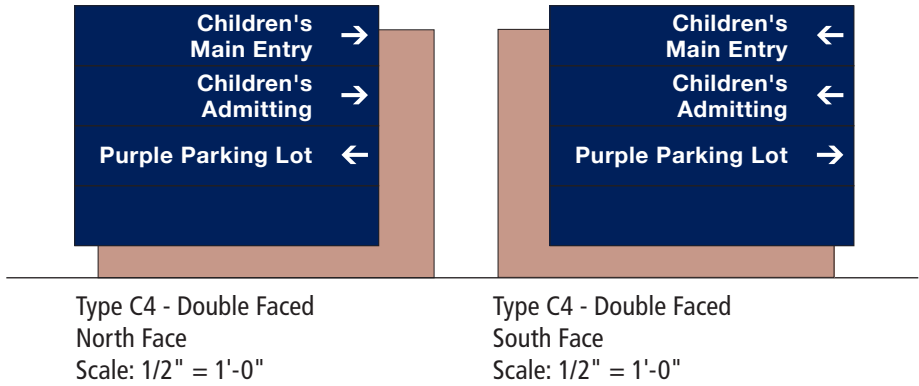
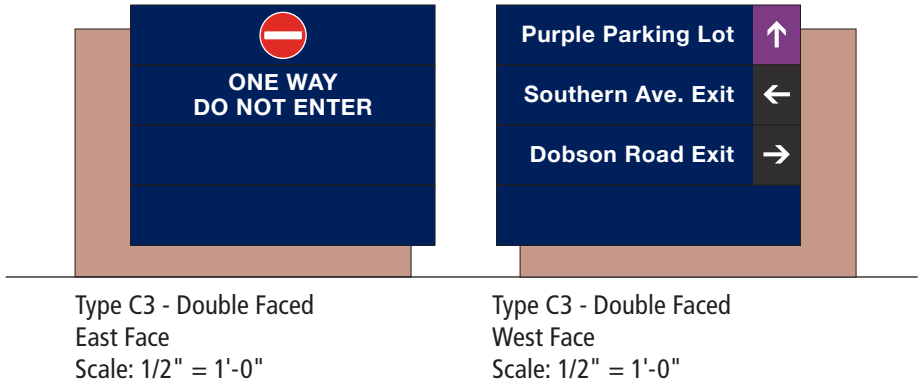
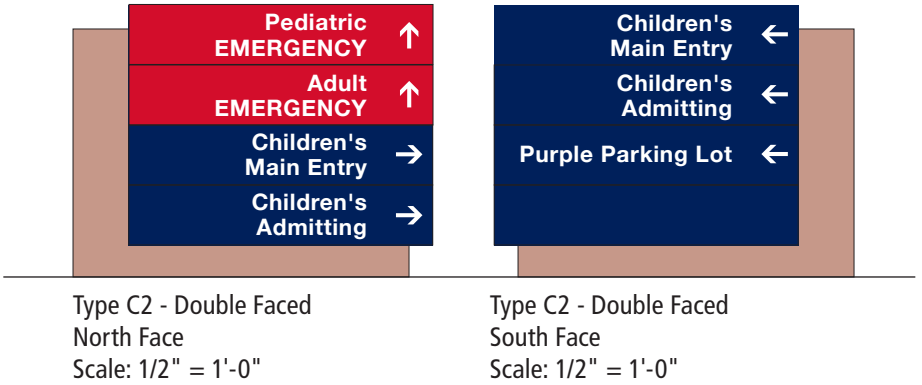
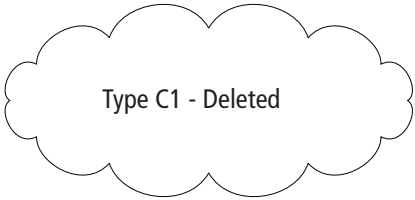
Side B

C Directional Sign
Non-Illuminated
Scale: 1" = 1'-0"
Quantity: 20 D/F or S/F

EXISTING - 3" deep aluminum sign cabinet painted to match Sherwin Williams "Reddened Earth" (SW6053)
NEW - Aluminum removable sign panels attached to aluminum signs cabinet with
1" aluminum clips painted to match Pantone 281 C dark Blue.
EMERGENCY panels painted to match PMS 186C Red.
NEW - Text and graphics to be surface applied 3M Reflective white vinyl.
NEW - Zone color area to be 3M Vinyl applied to panels.

Ground illumination (if required) by others.

- RED 3M Atomic Red (220-293) to match PMS 186C
- LIGHT BLUE 3M Sky Blue (220-417)
- YELLOW 3M Sunflower (220-25)
- GREEN 3M Kelly Green (220-46)
- VIOLET 3M Purple (220-48)
- BROWN 3M Russet Brown (220-29)
- BLACK 3M Matte Black (220-22)



Banner Desert
Main Entry

Maternity Entry

Admitting /
Discharge

Blue Parking Lot

→

→

→

→

Type C13 - Double Faced
East Face
Scale: 1/2" = 1'-0"

Maternity Entry

Medical Office Bldg
1432, 1450, 1500, 1520

Dobson Road Exit

←

↑

↑

Type C13 - Double Faced
West Face
Scale: 1/2" = 1'-0"

2145 Building

Green Parking Lot

↑

↑

Type C14 - Double Faced
North Face
Scale: 1/2" = 1'-0"

2145 Building

Type C14 - Double Faced
South Face
Scale: 1/2" = 1'-0"

Combine into
"L" shaped sign.
Visibility O.K.

2145 Building

Green Parking Lot

Banner Desert
Main Entry

Maternity Entry

←

←

→

→

Type C14.1 - Double Faced
East Face
Scale: 1/2" = 1'-0"

Type C14.1 - Double Faced
West Face
Scale: 1/2" = 1'-0"

Green Parking
Garage

Green Parking Lot

←

↑

Type C15 - Double Faced
East Face
Scale: 1/2" = 1'-0"

Green Parking
Garage

Brown Parking
Garage

Education Center

→

↑

↑

Type C15 - Double Faced
West Face
Scale: 1/2" = 1'-0"

Medical Office Bldg
1520

←

Type C16.1 - Double Faced
East Face
Scale: 1/2" = 1'-0"

Medical Office Bldg
1520

Medical Office Bldg
1432, 1450, 1500

Brown Parking Lot

Dobson Road Exit

→

↑

↑

↑

Type C16.1 - Double Faced
West Face
Scale: 1/2" = 1'-0"

Banner MD Anderson
Cancer Center

Radiation Treatment

→

4'-8 1/2"
3'-1 1/2"
3'-9 1/2"
1'-3"
4"

Type C16 - Double Faced
East Face
Scale: 1/2" = 1'-0"

Banner MD Anderson
Cancer Center

Radiation Treatment

←

Type C16 - Double Faced
West Face
Scale: 1/2" = 1'-0"

Brown Parking
Garage

Education Center

Medical Office Bldg
1432

→

→

→

Type C17 - Double Faced
North Face
Scale: 1/2" = 1'-0"

Brown Parking
Garage

Education Center

Medical Office Bldg
1432

←

←

←

Type C17 - Double Faced
South Face
Scale: 1/2" = 1'-0"

Brown Parking Lot

Medical Office Bldg
1450, 1500

Medical Office Bldg
1520

←

←

↑

Type C18 - Double Faced
East Face
Scale: 1/2" = 1'-0"

Brown Parking Lot

Medical Office Bldg
1450, 1500

→

→

Type C18 - Double Faced
West Face
Scale: 1/2" = 1'-0"

Ambulance
Parking Only

Brown Parking
Garage

Education Center

Medical Office Bldg
1432

↑

←

←

←

Type C19 - Double Faced
East Face
Scale: 1/2" = 1'-0"

Type C19 - Double Faced
West Face
Scale: 1/2" = 1'-0"

Banner Desert
Main Entry

Maternity Entry

2145 Building

Medical Office Bldg
1450, 1500, 1520

←

←

←

←

Type C20 - Double Faced
East Face
Scale: 1/2" = 1'-0"

Type C20 - Double Faced
West Face
Scale: 1/2" = 1'-0"

EMERGENCY

Cardon Children's
Main Entry

2225 Building

Brown Parking
Garage

→

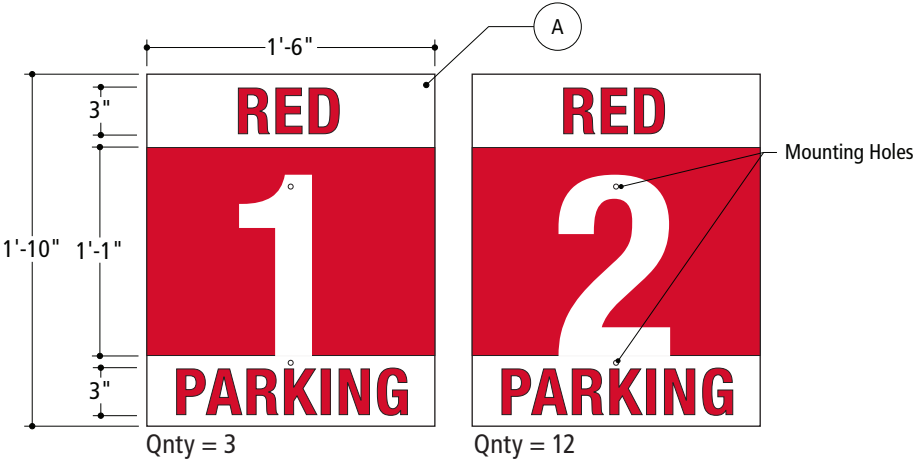
→

→

↑

Type C21 - Double Faced
East Face
Scale: 1/2" = 1'-0"

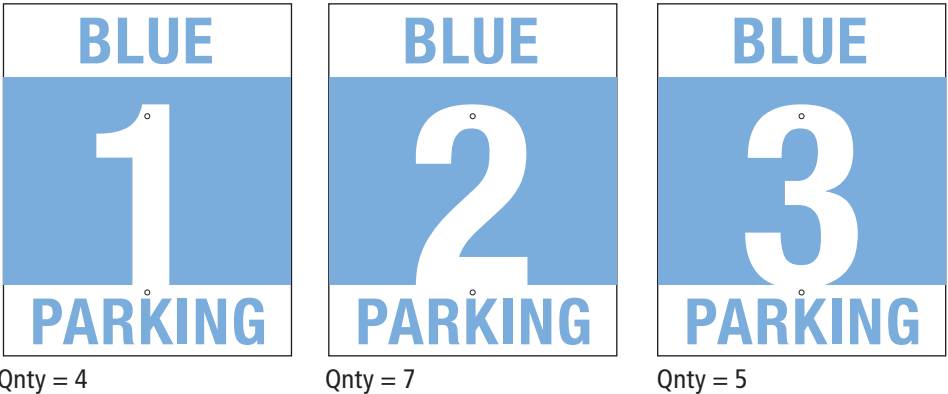
Type C21 - Double Faced
West Face
Scale: 1/2" = 1'-0"



- ZONE COLORS**
- RED 3M Atomic Red (220-293)
 - LIGHT BLUE 3M Sky Blue (220-417)
 - YELLOW 3M Sunflower (220-25)
 - GREEN 3M Kelly Green (220-46)
 - VIOLET 3M Purple (220-48)
 - BROWN 3M Russet Brown (220-29)
 - BLACK 3M Matte Black (220-22)



Placement - Not to Scale



Parking Area Identification - Light Pole Mounted
Elevation
Scale: 1" = 1'-0"
Quantity = 96 D/F Locations (192 S/F Panels)

A. .080" pre-finished white aluminum panels.
Vinyl color fields and text.
Mounted to existing light poles using band-it system.
2 Holes through face of panels.



Placement - Not to Scale



SIGN W6 - Southeast Elevation
22'-1" W x 2'-6" H



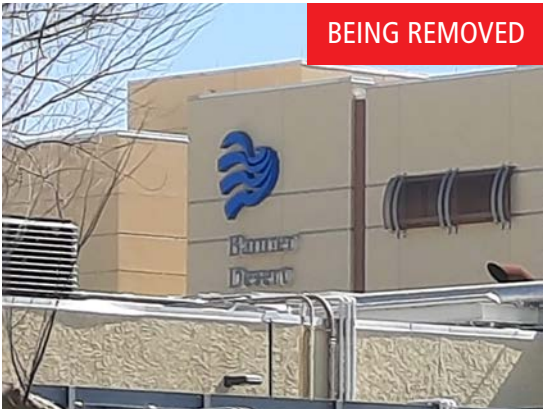
SIGN W7 - Southeast Elevation
18'-3" W x 2'-0" H & 17'-10 W x 1'-6" H



SIGN W8 - Northeast Elevation
18'-3" W x 2'-0" H & 17'-10 W x 1'-6" H



SIGN 1 - West Elevation
19'-2" W x 3'-7" H



SIGN 2 - North Elevation 129 sq. ft.
8'-10" W x 9'-6" H - Logo
11'-2" W x 5'-8" H - Letters



SIGN 3



SIGN 4 - Northwest Elevation
20'-9" W x 4'-11" H



SIGN 5 - Southwest Elevation
10'-7" W x 1'-8" H



SIGN 6 - North Elevation
7'-3" W x 2'-0" H



SIGN 7 - East Elevation
7'-3" W x 2'-0" H



SIGN 8 - South Elevation
27'-10" W x 6'-8" H



SIGN 9 - South Elevation
7'-3" W x 4'-0" H



SIGN 10 - East Elevation
7'-3" W x 4'-0" H



SIGN 11 - South Elevation
14'-4" W x 2'-9" H



SIGN 12 - East Elevation
6'-0" W x 10" H
15'-0" W x 10" H

All Sizes Shown are Approximate.



SIGN 13
D/F internally illuminated
6'-8" W x 3'-10" H x 7" D



SIGN 14 - West Elevation
10'-0" W x 3'-0" H



SIGN 15
D/F ground illuminated
20' W x 6'-4" H



SIGN 16 - South Elevation



SIGN 17 - North Elevation



SIGN 18 - North Elevation



SIGN 19 - East Elevation



SIGN 20 - East Elevation



SIGN 21 - East Elevation



SIGN 22 - East Elevation
7'-0" W x 2'-6" H



SIGN 23 - South Elevation



SIGN 24 - South Elevation



SIGN 25 - South Elevation

All Sizes Shown are Approximate.