



DESIGN REVIEW BOARD

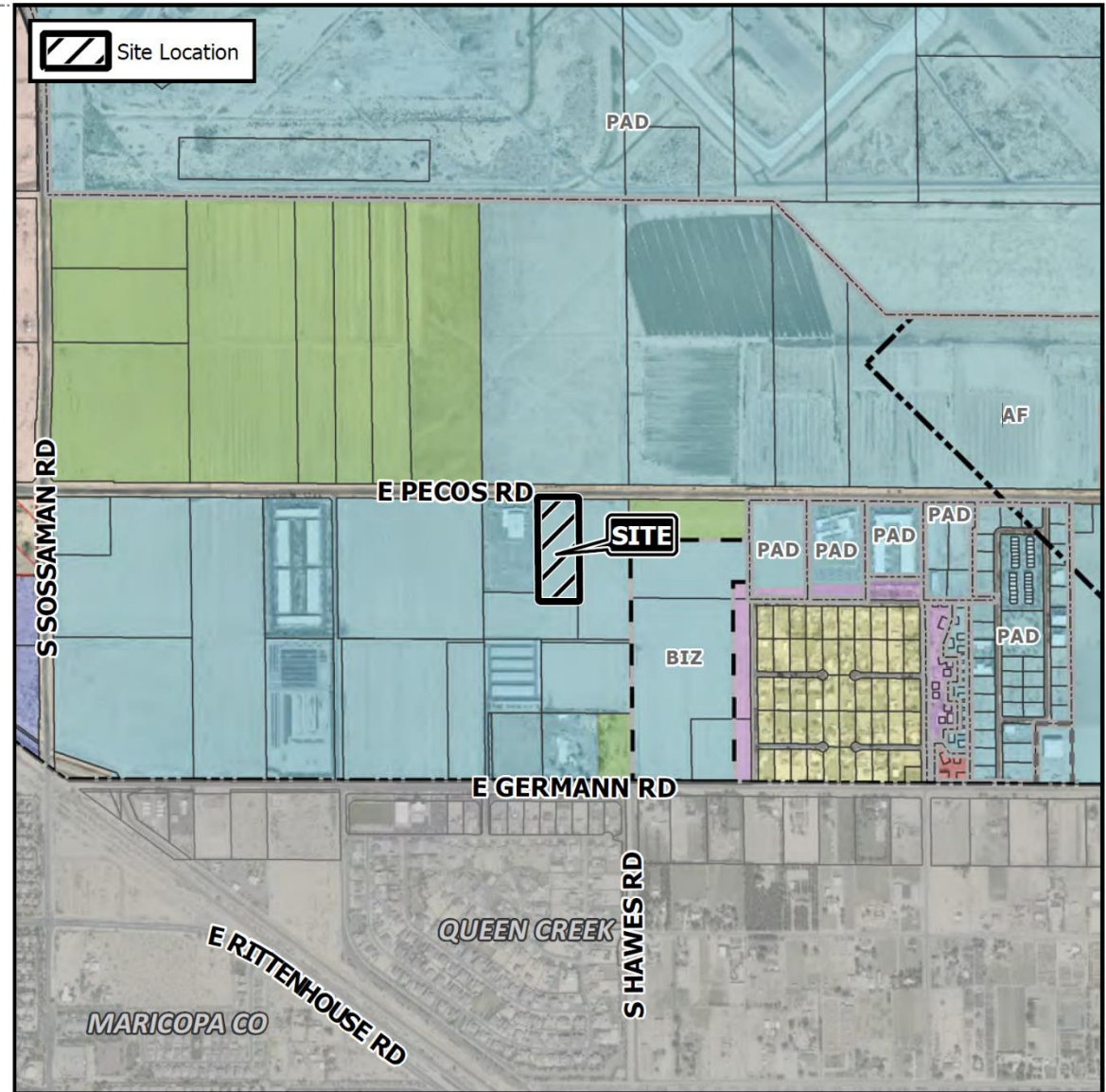
July 13, 2021

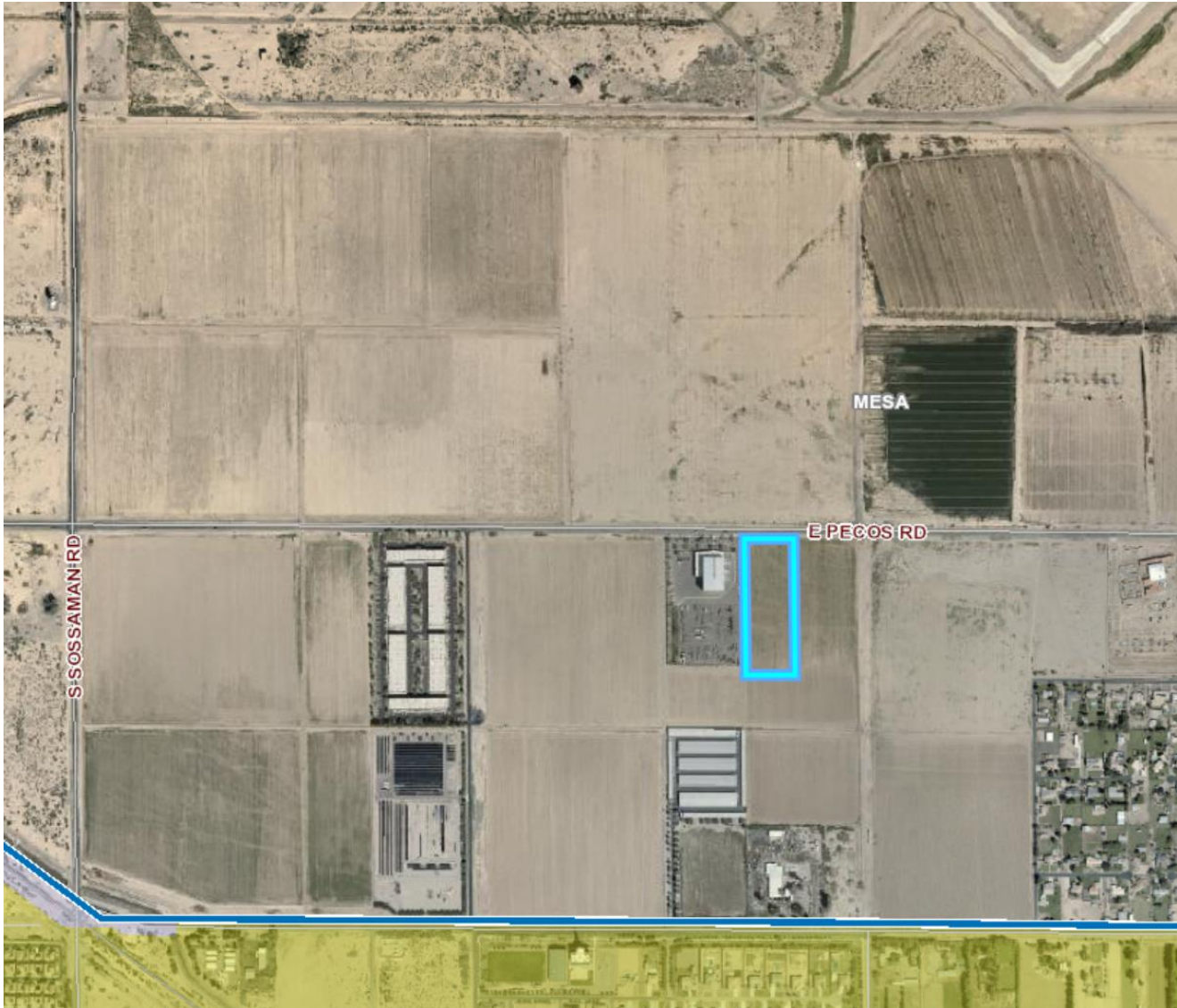


DRB21-00349

Location

- South side of Pecos Road.
- West of Hawes Road alignment.





Request

- Design Review

Purpose

- Proposed Office and Warehouse

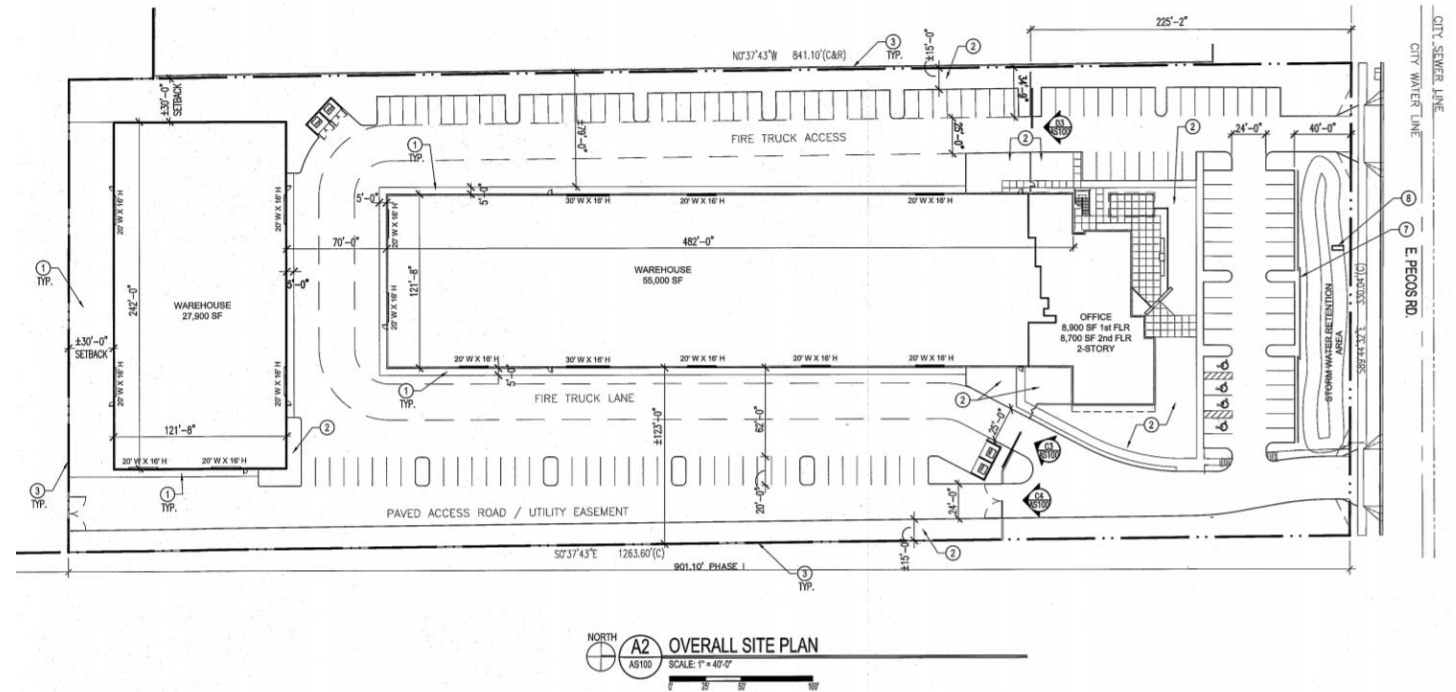
Site Photo



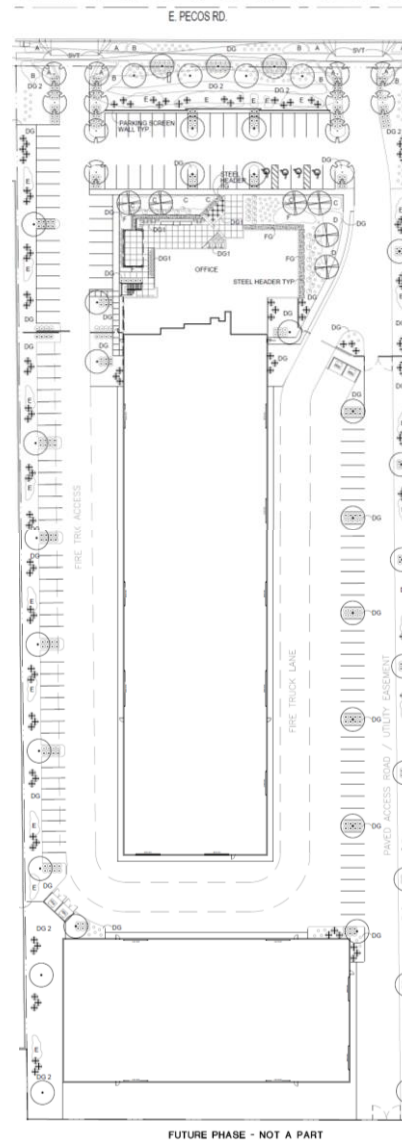
Looking south towards the site from Pecos Road

Site Plan

- Vehicular access from Pecos Road
- Pedestrian connection to Pecos Road
- Two buildings



Landscape Plan



MASTER PLANT LIST



TREES

CERCIDIUM PRAECOX 'AZT HYBRID #5'
AZT HYBRID PALO BREA #5

SIZE/COMMENTS
36" BOX / MATCHED /
LOW BREAKING /
6 QTY



PROSOPIS 'AZT PODLESS HYBRID'
'AZT HYBRID' PODLESS MESQUITE

36" BOX / MATCHED /
LOW BREAKING /
12 QTY



CHILOPSIS 'DORA'S DESERT ROSE'
HYBRID DESERT WILLOW

24" BOX / MATCHED /
LOW BREAKING /
37 QTY

SHRUBS

EREMOPHILA CARNOSA
WINTER BLAZE EMU

SIZE/COMMENTS
5 GAL / 76 QTY

OPUNTIA CACANAPA 'ELLISIANA'
SPINELESS PRICKLY PEAR

15 GAL / 10 QTY

LEUCOPHYLLUM ZYGOPHYLLUM
CIMARRON SAGE

5 GAL / 29 QTY

HESPERALOE 'PINK PARADE' 'PERFU'
PINK PARADE HESPERALOE

7 GAL / 10 QTY

LEUCOPHYLLUM LANGMANIAE
RIO BRAVO SAGE

5 GAL / 194 QTY

RUELLIA PENINSULARIS
BAJA RUELLIA

5 GAL / 93 QTY

CAESALPINIA MEXICANA
MEXICAN BIRD

5 GAL / 128 QTY

TECOMA 'SIERRA APRICOT'
SIERRA APRICOT TECOMA

15 GAL / 3 QTY

GROUND COVER

ERICAMERIA LARICIFOLIA 'AGUIRRE'
TURPENTINE

SIZE/COMMENTS
1 GAL / 162 QTY

LANTANA 'NEW GOLD'
TRAILING YELLOW LANTANA

1 GAL @ 3' O.C.
145 QTY

BOUTELOUA 'BLONDE AMBITION'
BLONDE AMBITION GRAMA

1 GAL @ 3' O.C.
156 QTY

EREMOPHILA GLABRA
OUTBACK SUNRISE EMU

1 GAL @ 3' O.C.
177 QTY

JUSTICIA CALIFORNICA
CHUPAROSA

5 GAL @ 3' O.C.
78 QTY

ENCILIA FARINOSA
BRITTLE BUSH

1 GAL @ 4' O.C.
292 QTY

ALOE VERA
ALOE

5 GAL @ 3' O.C.
73 QTY

DECOMPOSED GRANITE
PALOMINO GOLD

1/2" MINUS
2" DEPTH TYP.

DECOMPOSED GRANITE
ROCK PROS - CARMEL

1/2" MINUS
2" DEPTH TYP.

DECOMPOSED GRANITE
PALOMINO GOLD

3" MINUS
2" DEPTH TYP.

FRACTURED GRANITE
ROCK PROS - CARMEL

1"-3" SCREENED
4" DEPTH TYP.

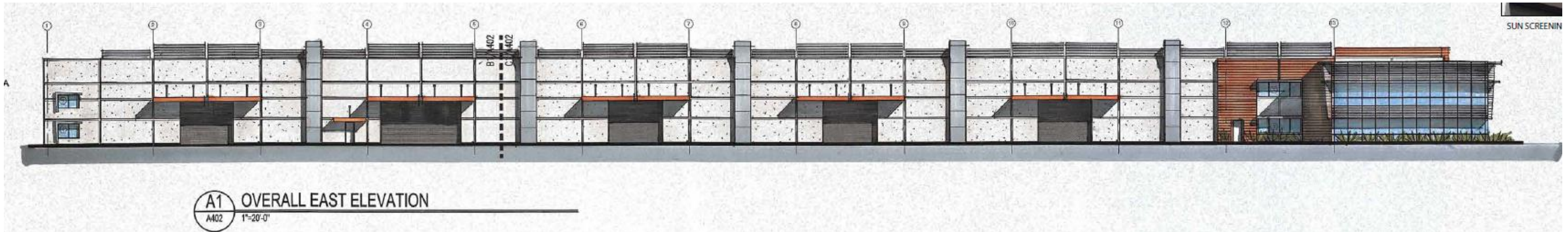
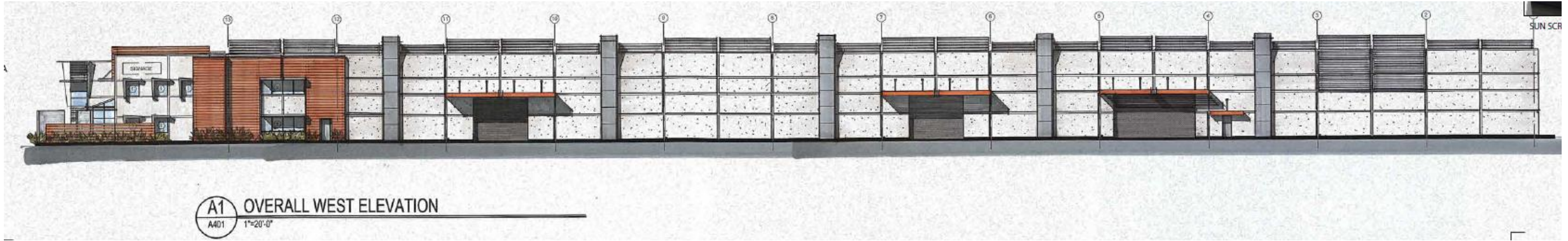
Office Warehouse - Elevations



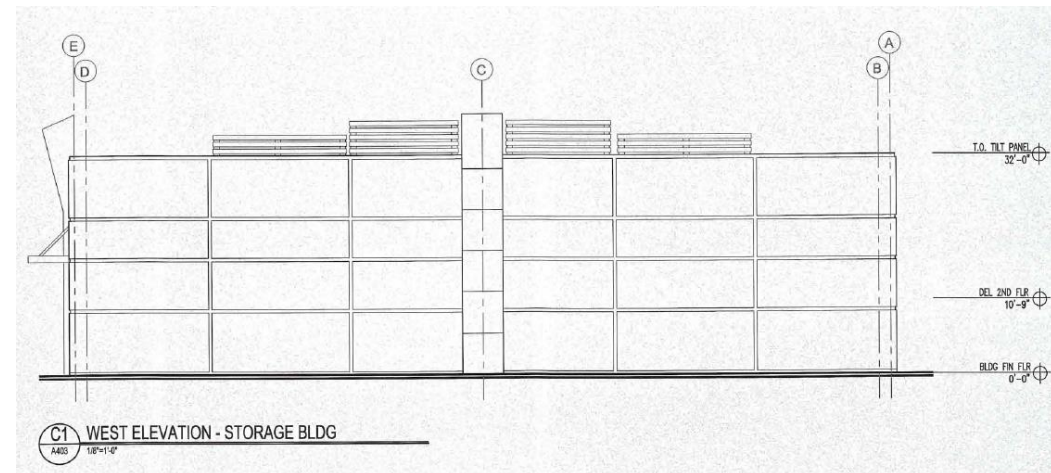
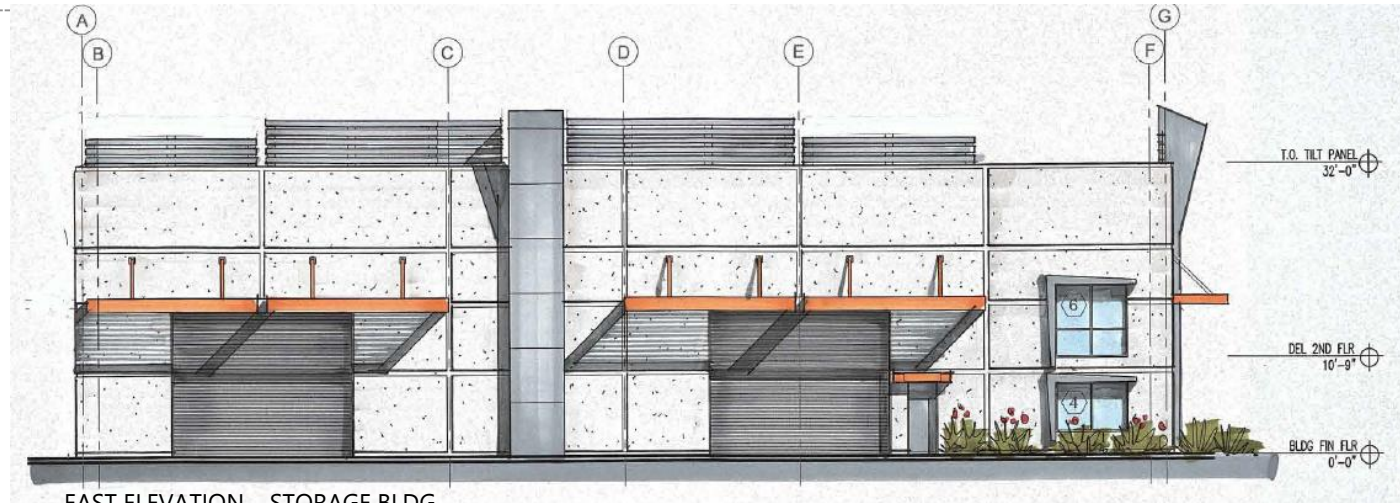
Office Warehouse - Elevations



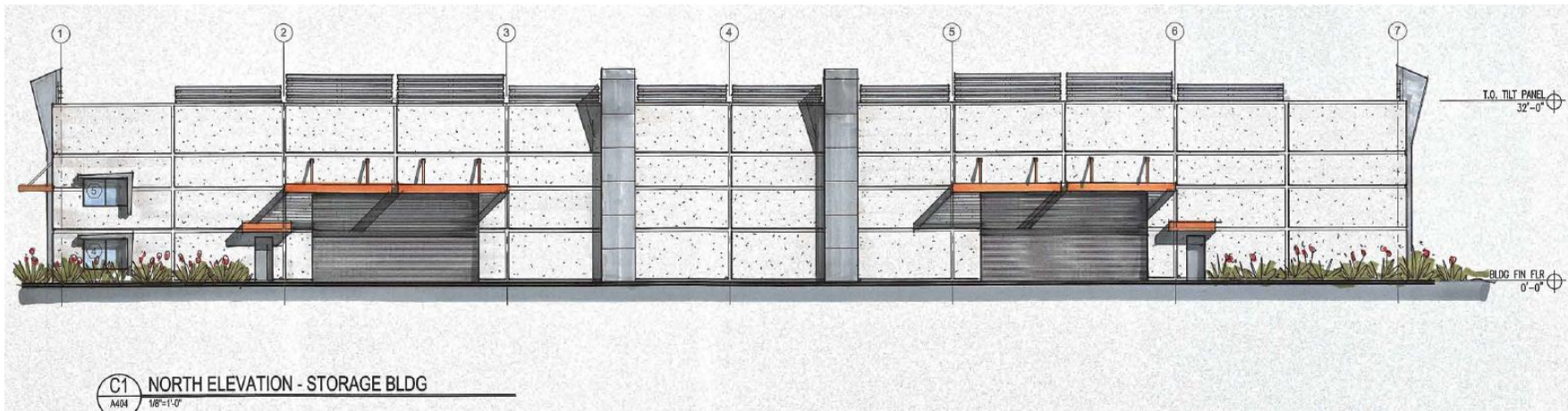
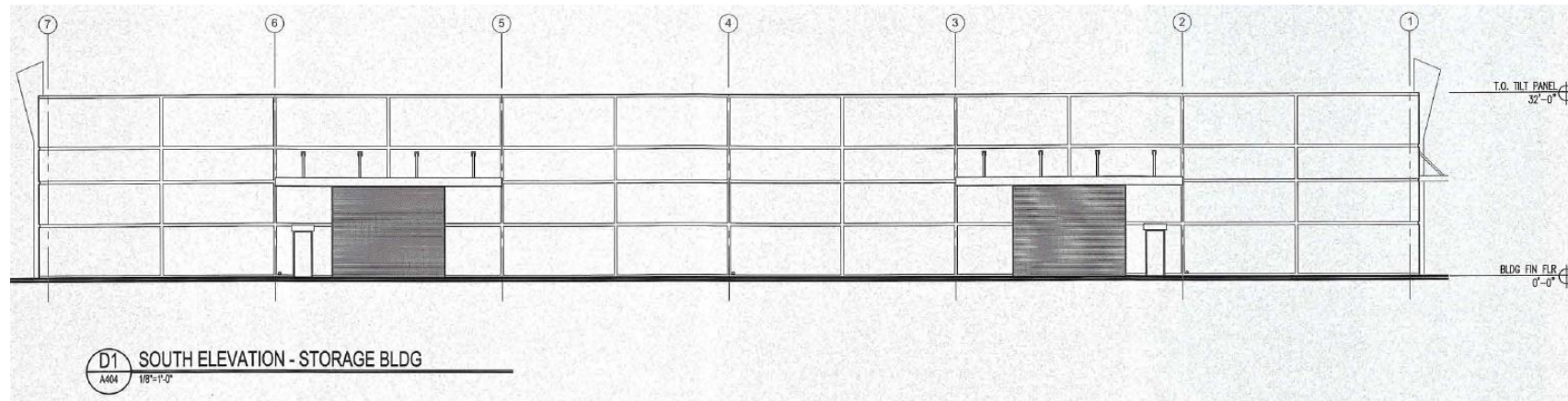
Office Warehouse - Elevations



Rear Warehouse Building - Elevations



Rear Warehouse Building - Elevations



Color and Material Board

BUILDING MATERIALS



REYNOBOND PANEL - COPPER

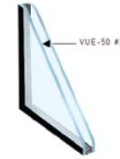


ACM Panels in Curtain Wall



CONCRETE TILT-WALL

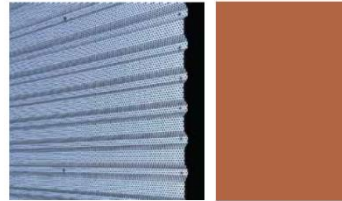
1" VUE1-S0 INSULATING
1/4" (6mm) clear with VUE-S0 #2
1/2" (13.2mm) Argon filled space
1/4" (6mm) clear



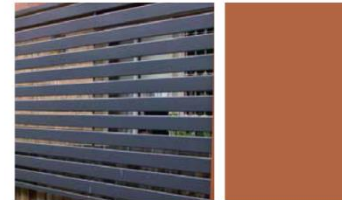
VLT 48%
Winter u-value 0.25
Summer u-value 0.20
SHGC 0.25



CURTAIN WALL / GLAZING

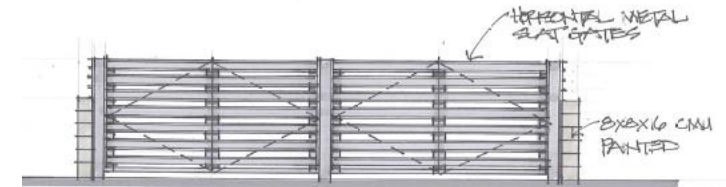
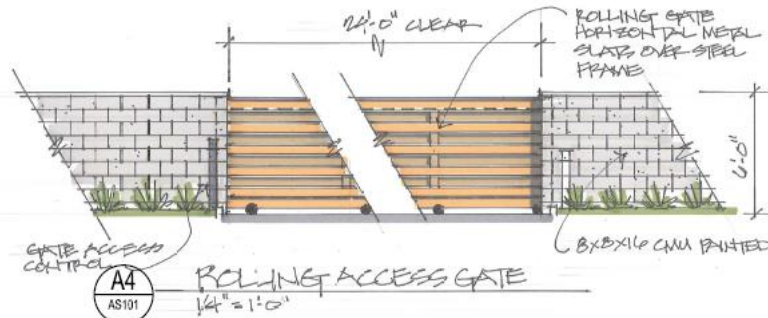
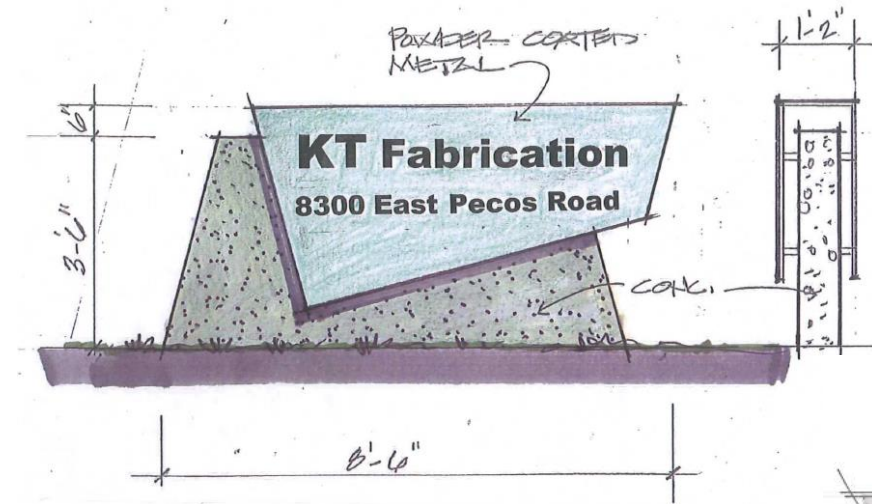


PERF PATIO SCREEN - RUSTED METAL

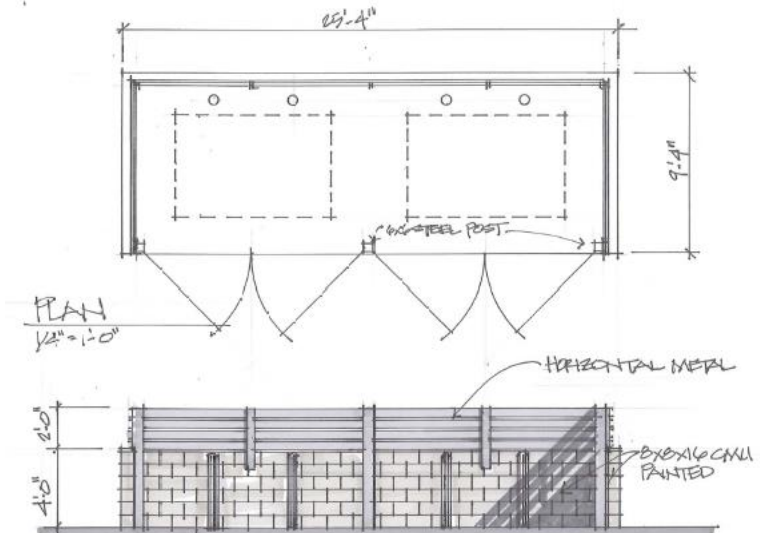


METAL SLAT STAIR SCREEN - RUSTED METAL

Site Details



C2
TRASH ENCLOSURE FRONT
1/4" = 1'-0"



C4
TRASH CONTAINER (INSIDE)
1/4" = 1'-0"

Design Guidelines

Section 11-7-3

✓	Roof Articulation
✓	Wall Articulation
✓	Design incorporates multiple materials
✓	No more than fifty percent (50%) of the total façade may be covered with one material

Summary

Findings

Staff welcomes any feedback



DESIGN REVIEW BOARD

July 13, 2021