



# DESIGN REVIEW BOARD

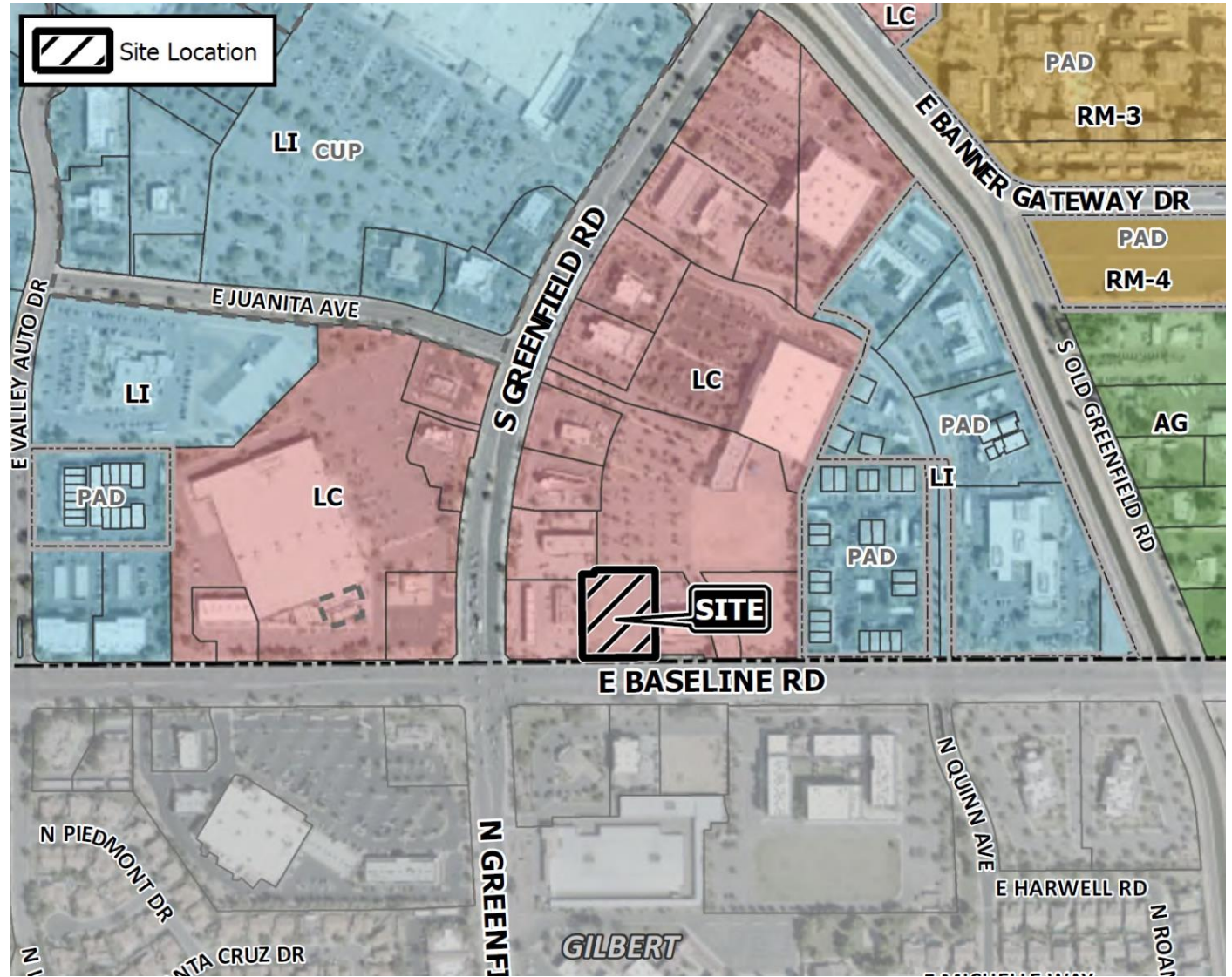
July 13, 2021



**DRB21-00352**

# Location

- North of Baseline Road
- East of Greenfield Road







## Request

---

- Design Review

## Purpose

---

- Proposed dental office with a drive thru

# Site Photo



Looking northwest from Baseline Road

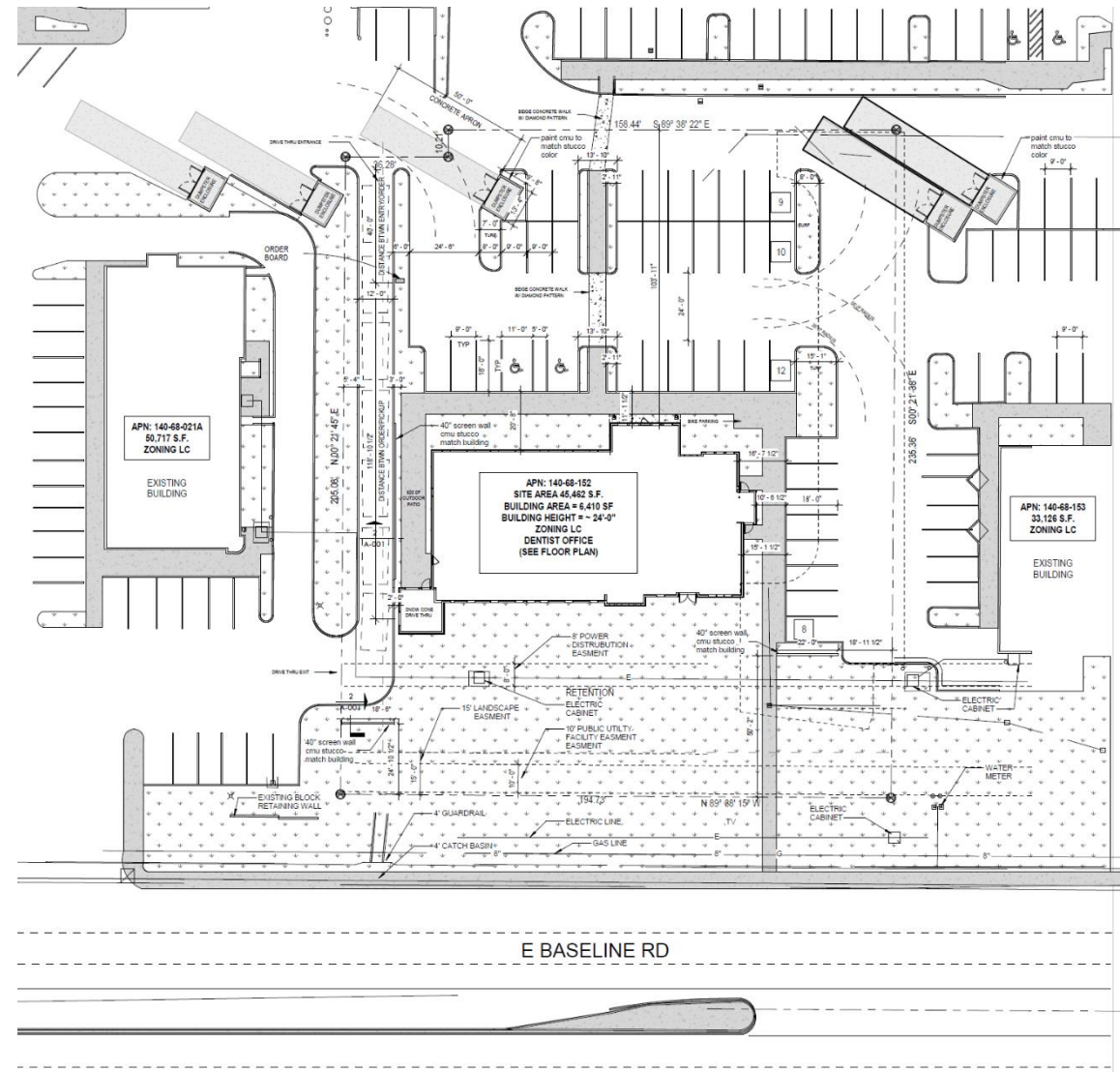


Looking south towards Baseline Road

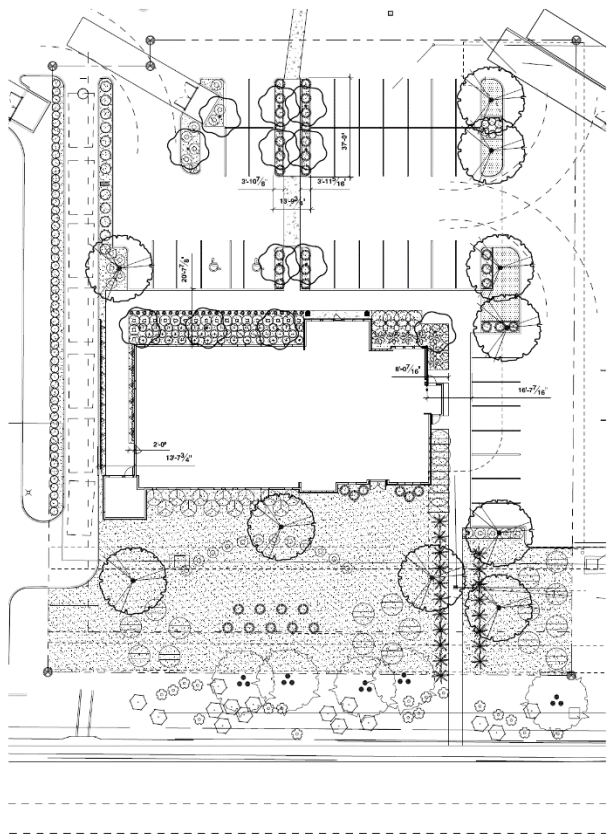


# Site Plan

- Cross access agreement for vehicular access through other sites
- Pedestrian connection to Baseline Road
- Dental office with drive thru



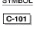
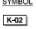
# Landscape Plan



## PLANT SCHEDULE

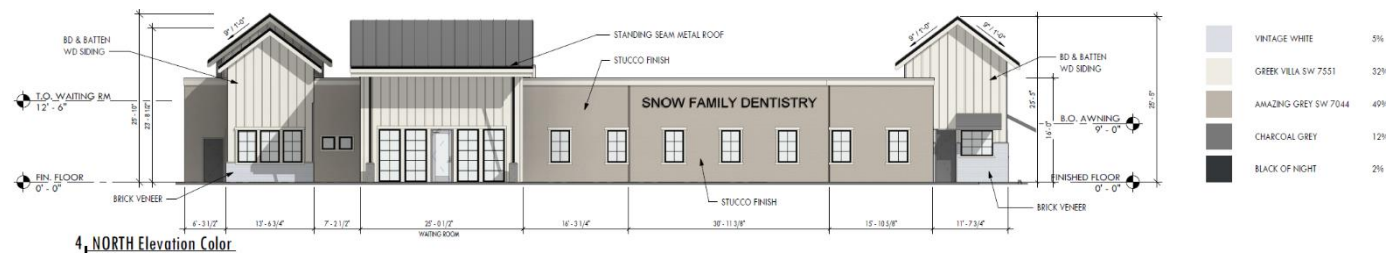
TREES	BOTANICAL / COMMON NAME	SIZE	QTY
	<i>Olea europaea</i> 'Fruttes' Frutless Olive	36" Box	10
	<i>Olea europaea</i> 'Fruttes' Frutless Olive	Existing	5
	<i>Sophora secundiflora</i> Texas Mountain Laurel	36" Box	12
SHRUBS	BOTANICAL / COMMON NAME	SIZE	QTY
	<i>Agave ovifolia</i> Frosty Blue Frosty Blue White's Tongue Agave	5 gal.	7
	<i>Asteria cordifolia</i> Hearts And Flowers	1 gal.	8
	<i>Buxus microphylla japonica</i> Japanese Boxwood	5 gal.	19
	<i>Cercis macrocarpa</i> 'Bowerwood Beauty' Beauty Nut Plum	5 gal.	13
	<i>Hesperis matronalis</i> Red Yucca	5 gal.	19
	<i>Leucanthemum x superbum</i> Shasta Daisy	1 gal.	7
	<i>Leucophyllum frutescens</i> 'Compacta' Compact Texas Ranger	5 gal.	13
	<i>Leucophyllum frutescens</i> 'Compacta' Compact Texas Ranger	Existing	15
	<i>Liriope muscari</i> 'Variegata' Variegated Lily Turf	1 gal.	27
	<i>Muhlenbergia capillaris</i> 'Lancelo' TM Ragged Mist Pink Muhly Grass	5 gal.	41
	<i>Myrtus communis</i> 'Compacta' Dwarf Myrtle	5 gal.	61
	<i>Ruellia pennsylvanica</i> Wild Petunia	5 gal.	30
	<i>Ruellia pennsylvanica</i> Wild Petunia	Existing	18
	<i>Salvia x sylvestris</i> 'May Night' Sage	5 gal.	38
	<i>Tecoma x</i> 'Orange Jubilee' Orange Jubilee Yellow Bells	5 gal.	23
	<i>Trachelospermum jasminoides</i> Star Jasmine Trellis	5 gal.	16
GROUND COVERS	BOTANICAL / COMMON NAME	QTY	
	<i>Cynodon dactylon</i> 'Midiron' Bermuda Grass	515 sf	

## REFERENCE NOTES SCHEDULE

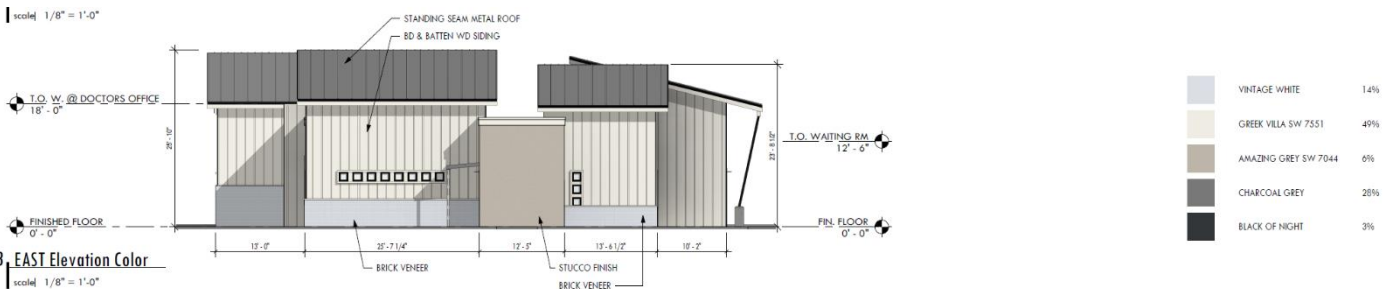
SYMBOL	CONCRETE CURB DESCRIPTION
	New 6" Mowstrip
SYMBOL	NOCK DESCRIPTION
	3/4" Screened Express Camel Decomposed Granite at 2" depth in all planting areas. NOTE: The quantity shown is an estimate. The contractor will be responsible to verify in the field the exact quantity needed.

LANDSCAPE CALCULATIONS		
Total Open Space Area	14,845 Square Feet	
Plant Material Coverage	8,378 Square Feet (56%)	
	REQUIRED	PROVIDED
Street Frontage Trees	8	9
Street Frontage Shrubs	48	107
24" Box Trees	18	9
36" Box Trees	6	15

# Elevations



North Elevation



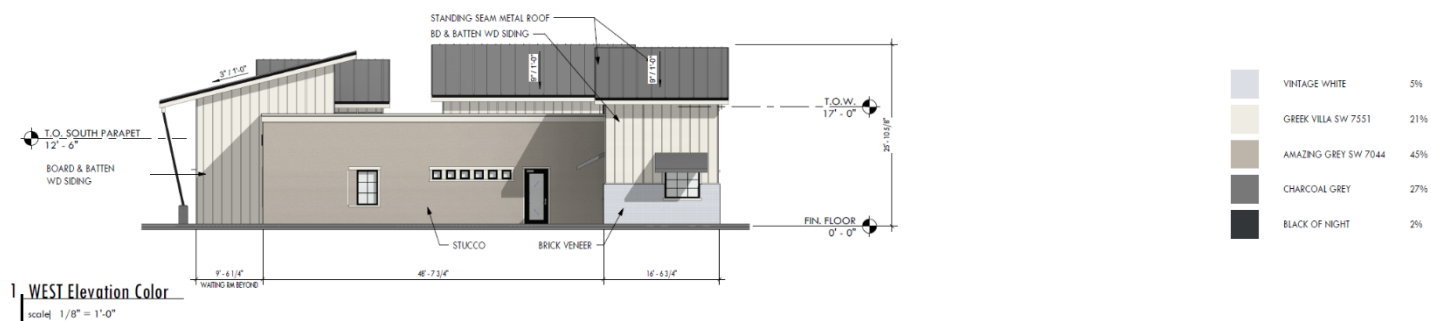
East Elevation



# Elevations



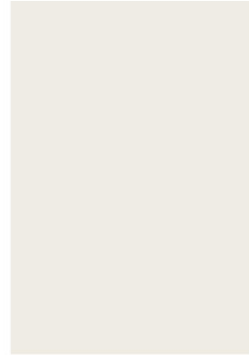
South Elevation



West Elevation

# Color and Material Board

---



BOARD & BATTEN SIDING  
SW 7551 GREEK VILLA



STUCCO  
SW 7044 AMAZING GREY



WINDOW FRAMES  
BLACK



VINTAGE WHITE BY  
OLD TEXAS BRICK

PHYSICAL SAMPLE PROVIDED. THIS IS FOR DIGITAL REFERENCE ONLY



WESTERN STATES METAL ROOFING  
CHARCOAL GRAY  
R: 26% E: .84 SRI: 24  
COOL TECH 500 PVDC

# Lighting



## D-Series Size 1 LED Wall Luminaire



Catalog  
Number

Notes

Type

Hit the Tab key or mouse over the page to see all interactive elements.

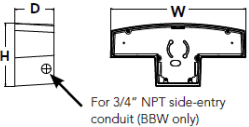
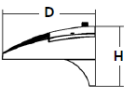
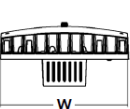
### d#series

#### Specifications Luminaire

Width:	13-3/4" (34.9 cm)	Weight:	12 lbs (5.4 kg)
Depth:	10" (25.4 cm)		
Height:	6-3/8" (16.2 cm)		

#### Back Box (BBW, ELCW)

Width:	13-3/4" (34.9 cm)	BBW Weight:	5 lbs (2.3 kg)
Depth:	4" (10.2 cm)	ELCW Weight:	10 lbs (4.5 kg)
Height:	6-3/8" (16.2 cm)		



### Introduction

The D-Series Wall luminaire is a stylish, fully integrated LED solution for building-mount applications. It features a sleek, modern design and is carefully engineered to provide long-lasting, energy-efficient lighting with a variety of optical and control options for customized performance.

With an expected service life of over 20 years of nighttime use and up to 74% in energy savings over comparable 250W metal halide luminaires, the D-Series Wall is a reliable, low-maintenance lighting solution that produces sites that are exceptionally illuminated.

### Ordering Information

EXAMPLE: DSXW1 LED 20C 1000 40K T3M MVOLT DDBTXD

DSXW1 LED												
Series	LEDs	Drive Current		Color temperature		Distribution		Voltage	Mounting	Control Options		
DSXW1 LED	10C 10 LEDs (one engine)	350	350 mA	30K	3000 K	T2S	Type II Short	MVOLT <sup>2</sup>	Shipped included (blank) Surface mounting bracket	Shipped installed PE Photoelectric cell, button type <sup>6</sup>		
		530	530 mA	40K	4000 K	T2M	Type II Medium	120 <sup>3</sup>				
	20C 20 LEDs (two engines) <sup>1</sup>	700	700 mA	50K	5000 K	T3S	Type III Short	208 <sup>3</sup>	BBW Surface-mounted back box (for conduit entry) <sup>5</sup>	DMG 0-10v dimming wires pulled outside fixture (for use with an external control, ordered separately)		
		1000	1000 mA (1 A) <sup>1</sup>	AMBPC	Amber phosphor converted	T3M	Type III Medium	240 <sup>3</sup>			PIR 180° motion/ambient light sensor, <15' mtg ht <sup>1,7</sup>	
						T4M	Type IV Medium	277 <sup>3</sup>				PIRH 180° motion/ambient light sensor, 15-30' mtg ht <sup>1,7</sup>
						TFTM	Forward Throw Medium	347 <sup>3,4</sup>				
						480 <sup>3,4</sup>		PIRH1FC3V Motion/ambient sensor, 15-30' mounting height, ambient sensor enabled at 1ft <sup>1,2</sup>				
									ELCW Emergency battery backup (includes external component enclosure), CA Title 20 Noncompliant <sup>8,9</sup>			



# Design Guidelines

## Section 11-6-3

- |   |  |
|---|--|
| ✓ | Design incorporates multiple materials   |
| ✓ | Wall articulation  |
| ✓ | Roof Articulation  |
| ✓ | No more than fifty percent (50%) of the total façade may be covered with one (1) single material |

# Summary

## Findings

- Staff welcomes any feedback



# DESIGN REVIEW BOARD

July 13, 2021