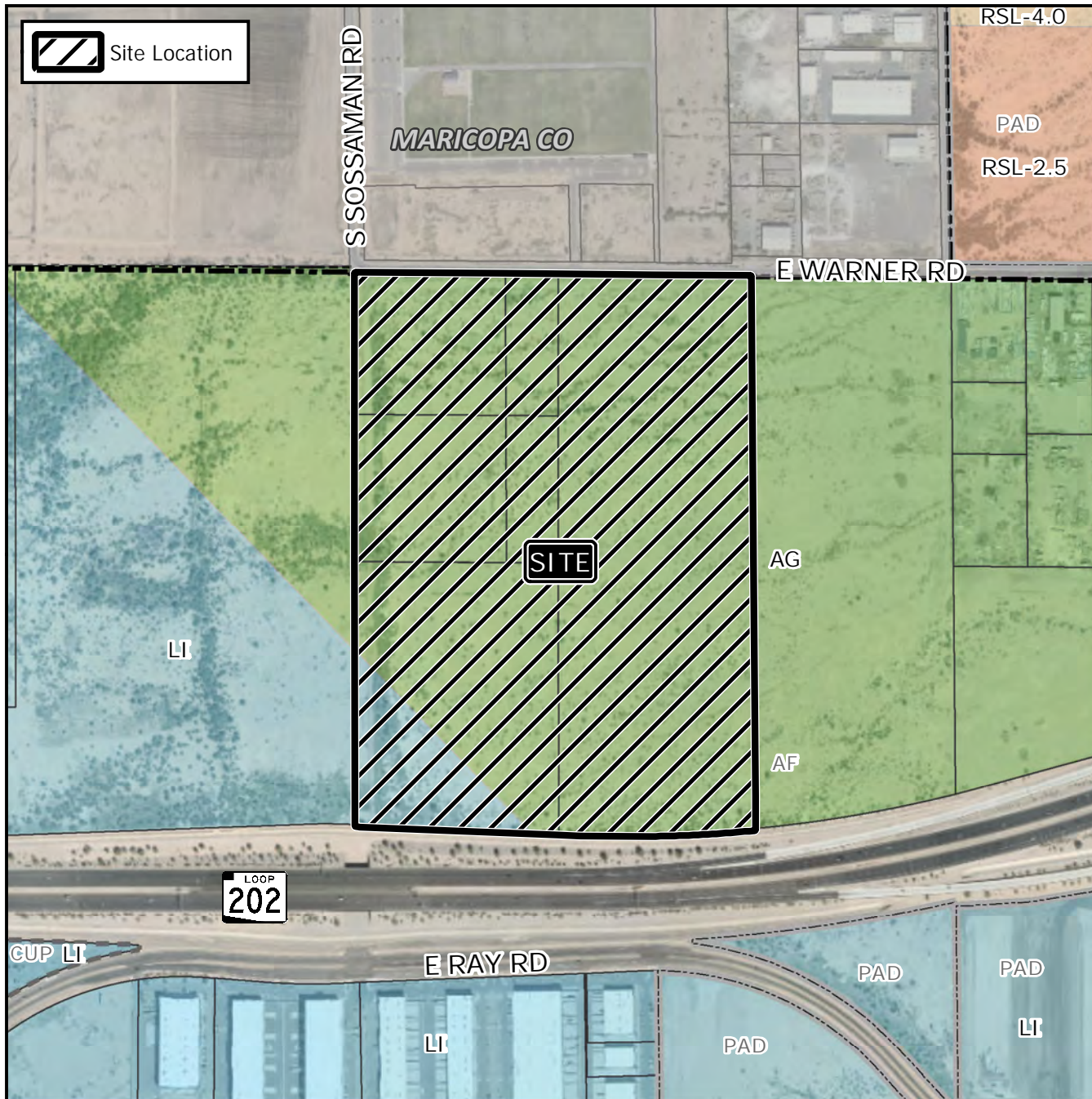


Design Review Vicinity Map: DRB21-00395



Case Details

Case:

DRB21-00395

Site / Address:

District 6. Within the 7600 to 7800 block of east Warner Road (south side) and within the 4400 to 4700 block of the South Sossaman Road alignment (east side). Located east of the Sossaman Road alignment on the south side of Warner Road. (101.7± acres)

Request:

Requesting the review of an industrial business park.

