



# LB6LEDA10L

LED Downlight Module (1038 Lumens)

12W High Efficacy

Wet Location

120V

## APPLICATIONS:

LiteBox LED modules are designed for use in new construction as well as retrofit applications with existing Prescolite or competitive 6" housings. Lumen output and distribution comparable to a 75W PAR while consuming only 12 watts. ENERGY STAR® qualified. Can be used to comply with California Title 24 IECC watts per square foot requirements. Suitable for use with continuous room side ambient temperature up to 25°C. Flicker-free dimming to 15% with most standard dimmers. (See Dimming Notes).

## LIGHT ENGINE:

High efficacy LED light engine, 3000K, 3500K and 5000K, 90+ CRI, integrated with durable aluminum heat sink for excellent thermal management. System designed for optimal life and lumen maintenance (60,000 hours at 70% lumen maintenance per TM-21).

## LENS/REFLECTOR:

All LiteBox LED modules are provided standard with a diffuse optical grade acrylic lens for uniform illumination and superior glare control. Reflector powder coat finish creates aesthetic ceiling appearance and visually comfortable 55° cutoff.

## LED DRIVER:

Integral high efficiency LED driver 120V, >0.9 power factor, dimmable to 15% with standard incandescent or electronic low voltage dimmers. (See Dimming Notes for recommended dimmers.) Output over-voltage, over-current, and short circuit protection. Life expectancy of 60,000 hours minimum at recommended ambient temperatures.

## INSTALLATION:

For New Construction: Use with Prescolite DBX QuickLink LED housings. QuickLink connector mates directly to housing connector without a screw base adapter for California Title 24 compliance.

For Retrofit: Use in Prescolite or other compatible 6" recessed housings using supplied screw base adapter.

Easy installation with (3) stainless steel spring clips (pre-installed).

## CERTIFICATIONS:

UL/cUL Classified for use in Prescolite or other 6" recessed housings including Halo, Juno, and Lithonia. (See page 3 for more details) Suitable for wet locations. ENERGY STAR qualified. Meets California Title 24 with DBXQL

## WARRANTY:

5 year warranty  
Additional information on page 3  
See [www.prescolite.com](http://www.prescolite.com) for details.



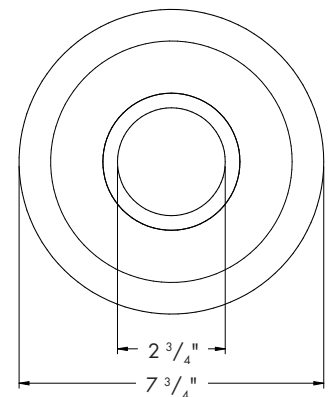
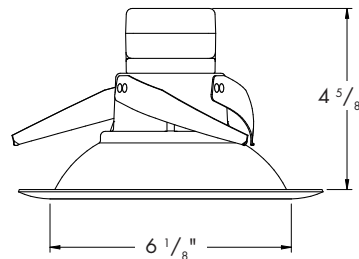
Aperture: Nominal 6"

See Housing Specification Sheet for ceiling cutout requirements

Not to Scale



Wall Wash - LB6LEDA10L35K9WW WH



CATALOG NUMBER

EXAMPLE: LB6LEDA10L30K WH

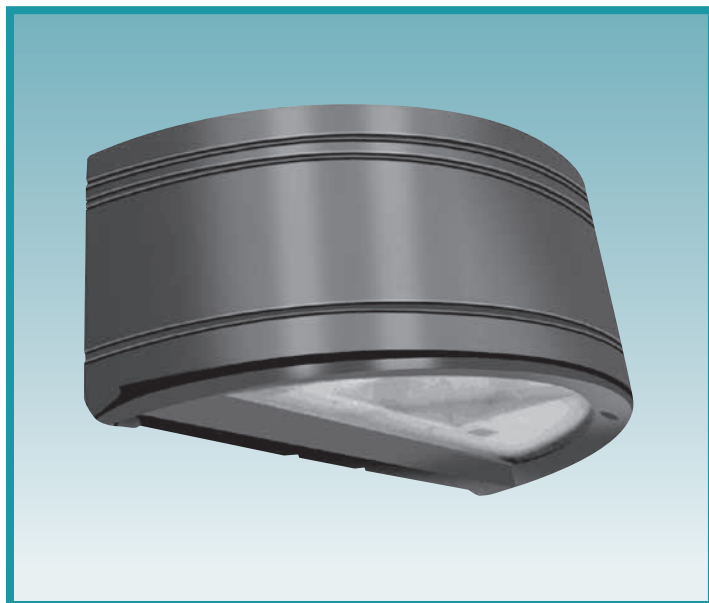
TRIM	LED COLOR	CRI	TRIM	TRIM COLOR	ACCESSORIES
<input checked="" type="checkbox"/> <b>LB6LEDA10L</b> 6" 1000 Lumen Litebox LED Module with dimming to 15% 120V	<input type="checkbox"/> <b>30K</b> 3000 Kelvin <input type="checkbox"/> <b>35K</b> 3500 Kelvin <input type="checkbox"/> <b>50K</b> 5000 Kelvin	<input type="checkbox"/> <b>Blank</b> 80+ CRI <input type="checkbox"/> <b>9</b> 90+ CRI	<input type="checkbox"/> <b>Blank</b> Open <input type="checkbox"/> <b>WW</b> Wall Wash	<input checked="" type="checkbox"/> <b>WH</b> White <input type="checkbox"/> <b>BL</b> Black <input type="checkbox"/> <b>SA</b> Silver Anodized <input type="checkbox"/> <b>GL</b> Gold	<input type="checkbox"/> <b>LiteGear</b> <sup>1</sup> Inverter, single phase central lighting, 125VA-250VA <input type="checkbox"/> <b>LPS Series</b> <sup>1</sup> LitePower micro-inverter, 20VA-55VA <input type="checkbox"/> <b>DBXQL</b> IC/Non-IC Airtight housing with supply wire quick connects <input type="checkbox"/> <b>IBXSQL</b> IIC/Non-IC Airtight shallow housing with supply wire quick connects

<sup>1</sup> See Central Inverter compatibility note and web links on page 2.



**HUBBELL**  
Lighting

# RADIUS WALL SCONCE



The RWSC Series radius wall sconce offers maximum versatility with multiple light sources and finishes. The available combination of uplight/downlight washes the building facade while the radial soft form housing will complement similar architectural design elements.



## Fixture Specifications

### FEATURES

- Durable cast aluminum housing
- Available in various lighting distributions for maximum versatility
- Integrated design eliminates high angle brightness
- Luminaire finished in weatherproof powder-coat paint
- Completely sealed, flat tempered glass lenses suitable for use in wet location
- Ships complete with lamp
- Downlight only, full cut-off
- Dark Sky compliant

### ORDERING INFORMATION

#### SAMPLE CATALOG NUMBER

**RWSC**

Series

**XXXXXX**

Wattage/Source

**XX**

Distribution

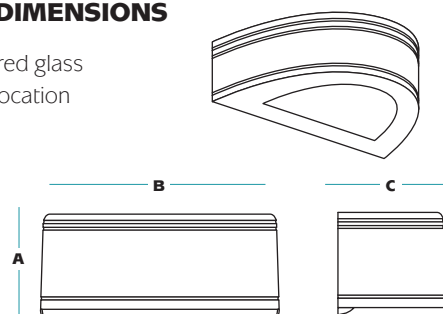
**XX**

Finish

**XXX**

Voltage

### DIMENSIONS



A	B	C
7.25"	18.0"	9.0"

SERIES	
<b>RWSC</b>	Radius Wall Sconce
WATTAGE/SOURCE <sup>1</sup>	
<b>70PMH</b>	70 watt pulse start metal halide
<b>100PMH</b>	100 watt pulse start metal halide
<b>150PMH</b>	150 watt pulse start metal halide
<b>70HPS</b>	70 watt high pressure sodium
<b>100HPS</b>	100 watt high pressure sodium
<b>150HPS</b>	150 watt high pressure sodium
<b>26QF</b>	26 watt quad tube fluorescent
<b>32TRF</b>	32 watt triple tube fluorescent
<b>42TRF</b>	42 watt triple tube fluorescent
<b>226QF</b>	2x26 watt quad tube fluorescent
<b>232TRF</b>	2x32 watt triple tube fluorescent
<b>242TRF</b>	2x42 watt triple tube fluorescent
<b>30LED</b>	30 watt LED <sup>3</sup> down only
<b>50LED</b>	50 watt LED up/down

DISTRIBUTION	
<b>UD</b>	Up/Downlight
<b>WD</b>	Downlight only (wide distribution)- standard
<b>FT</b>	Downlight only (forward throw)

FINISH <sup>2</sup>	
<b>DB</b>	Dark Bronze
<b>BK</b>	Black
<b>WH</b>	White
<b>PS</b>	Platinum Silver

<sup>1</sup> Consult factory for other lamp wattage and sources.  
<sup>2</sup> Other finishes available. Consult factory.  
<sup>3</sup> Available with WD distribution only.  
<sup>4</sup> Not for use with LED source.

VOLTAGE	
<b>120</b>	120 volt
<b>277</b>	277 volt
<b>MT</b>	Multi-Tap

OPTIONS	
<b>QSL</b>	Quartz re-strike with lamp
<b>F</b>	Single fusing
<b>FF</b>	Double fusing
<b>EM12<sup>4</sup></b>	1 MR11/MR16 two pin socket for 12v power (by others) 35w max. 35w MR11 lamp included.
<b>2EM12<sup>4</sup></b>	2 MR11/MR16 two pin sockets for 12v power (by others) 35w max. 35w MR11 lamp included.

ACCESSORIES	
<b>EM</b>	Remote emergency ballast (fluorescent only)



A HUBBELL LIGHTING, INC. COMPANY

**Performance Designed Lighting Products**

[www.securitylighting.com](http://www.securitylighting.com)

1085 Johnson Drive • Buffalo Grove, IL 60089 • TOLL-FREE: 800-544-4848 • PHONE: 847-279-0627 • FAX: 847-279-0642