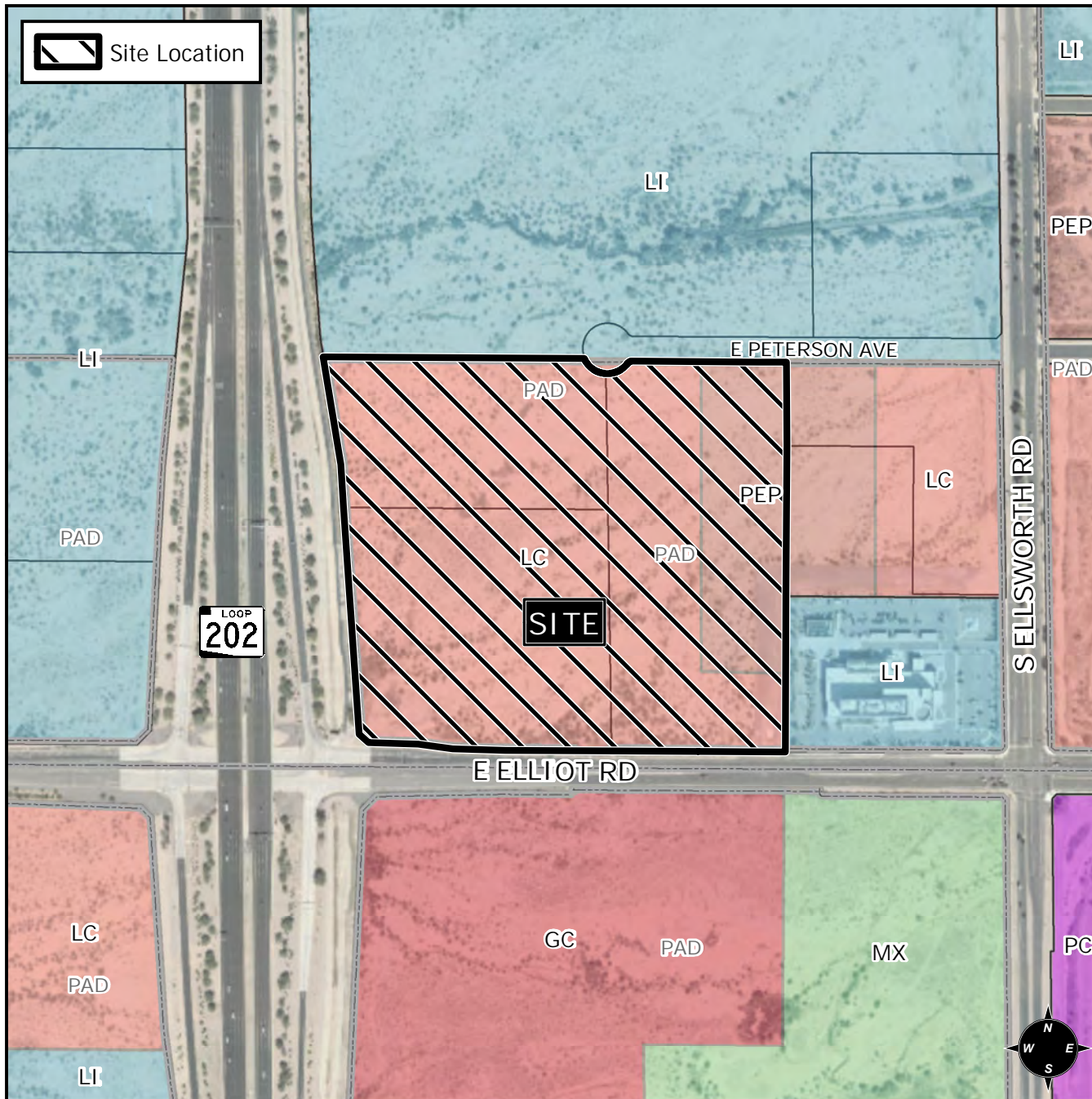


# Planning and Zoning Vicinity Map: ZON21-00224

## Case Details



CASE:

PRE-PLAT : ☐

ZON21-00224

### SITE / ADDRESS:

District 6. Within the 8800 to 9100 blocks of East Elliot Road (north side) and within the 8900 to 9100 blocks of East Peterson Avenue (south side). Located west of Ellsworth Road on the north side of Elliot Road (41± acres).

### REQUEST:

Rezone from Limited Commercial (LC) with a Planned Area Development Overlay (PAD) and Planned Employment Park (PEP)-PAD to Light Industrial (LI)-PAD; and Site Plan Review. This request will allow for an industrial development.

