

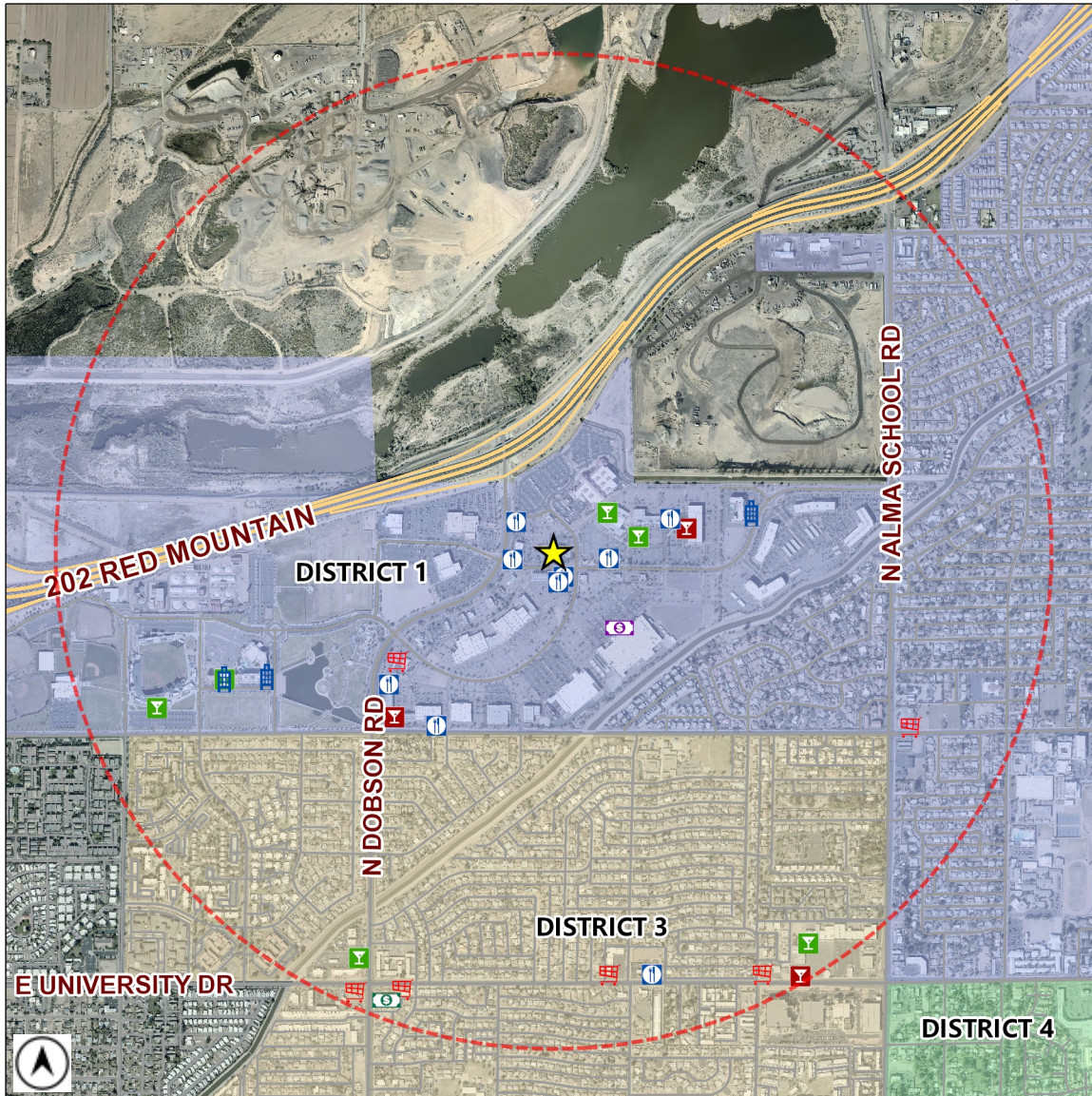


Liquor License Map

City of Mesa Tax & Licensing

Requesting Approval: **CRACKER BARREL #618**
1007 N DOBSON RD
License Type: **RESTAURANT (PEND)**
License Number: **LICA21-03126**

Estimated Population (1 Mile): **10784**
Source: MAG ACS 2013-2017 5 year data



	BAR	6		CLUB	0		HOTEL-MOTEL	3		MICRO-BREWERY	0
	BAR (PEND)	0		CLUB (PEND)	0		HOTEL-MOTEL (PEND)	0		MICRO-BREWERY (PEND)	0
	BEER / WINE BAR	3		CONVEYANCE	0		IN-STATE PRODUCER	0		RESTAURANT	9
	BEER / WINE BAR (PEND)	0		CONVEYANCE (PEND)	0		IN-STATE PRODUCER (PEND)	0		RESTAURANT (PEND)	0
	BEER / WINE STORE	6		DOMESTIC FARM WINERY	0		LIQUOR STORE	1		WHOLESALE	0
	BEER / WINE STORE (PEND)	1		DOMESTIC FARM WINERY (PEND)	0		LIQUOR STORE (PEND)	0		WHOLESALE (PEND)	0
	BEER / WINE STORE / SAMPLING	0		GOVERNMENT	0		LIQUOR STORE / SAMPLING	1		1 MILE BUFFER	
	BEER / WINE STORE / SAMPLING (PEND)	0		GOVERNMENT (PEND)	0		LIQUOR STORE / SAMPLING (PEND)	0		Total Count: 30 liquor licenses	