



# Liquor License Map

City of Mesa Tax & Licensing

Requesting Approval:



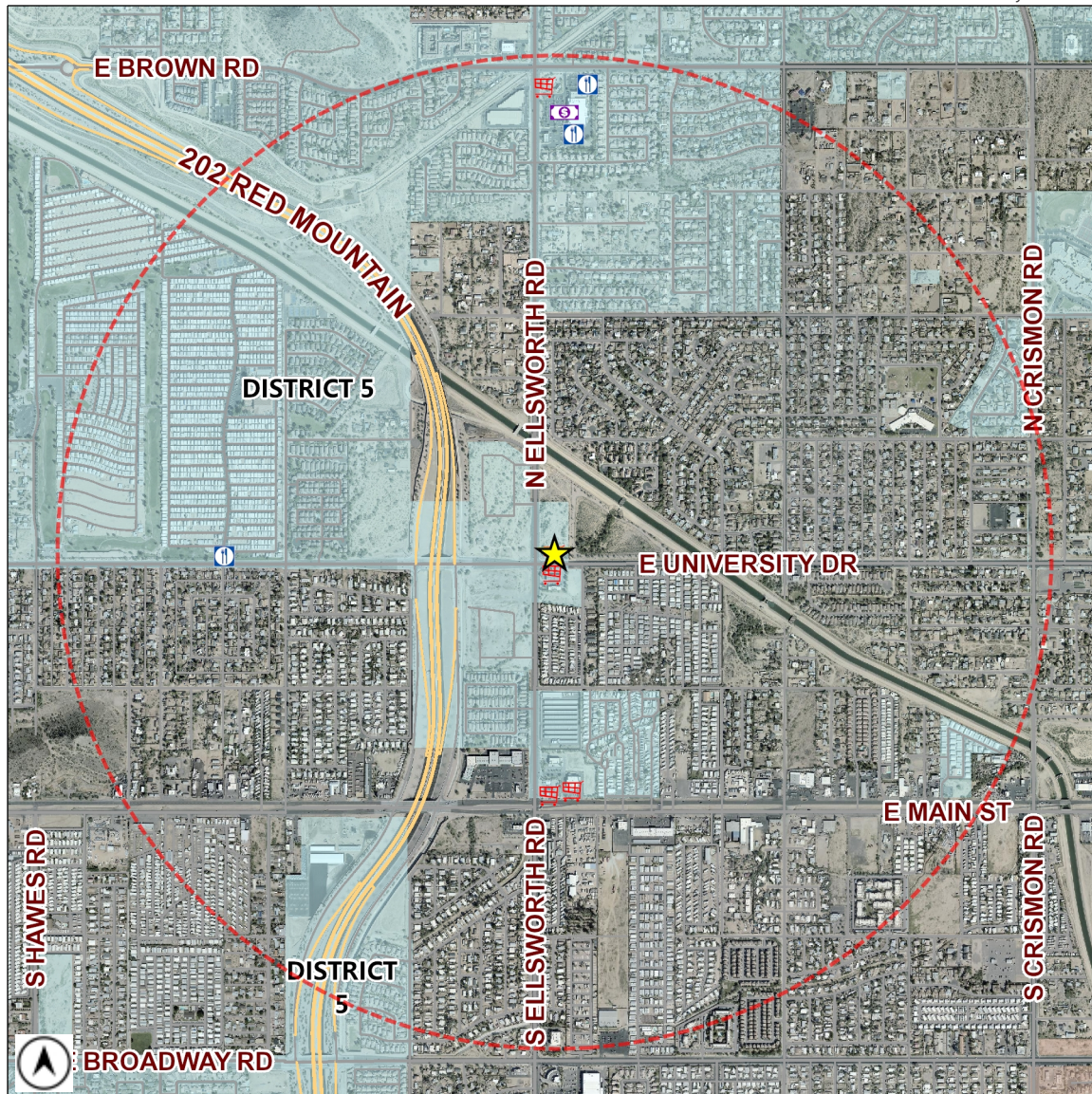
**CIRCLE K STORE #9538**  
**9230 E UNIVERSITY DR**  
**LIQUOR STORE (PEND)**  
**LICA21-03117**

License Type:

License Number:

Estimated Population (1 Mile): **12700**

Source: MAG ACS 2013-2017 5 year data



	BAR	0		CLUB	0		HOTEL-MOTEL	0		MICRO-BREWERY	0
	BAR (PEND)	0		CLUB (PEND)	0		HOTEL-MOTEL (PEND)	0		MICRO-BREWERY (PEND)	0
	BEER / WINE BAR	0		CONVEYANCE	0		IN-STATE PRODUCER	0		RESTAURANT	3
	BEER / WINE BAR (PEND)	0		CONVEYANCE (PEND)	0		IN-STATE PRODUCER (PEND)	0		RESTAURANT (PEND)	0
	BEER / WINE STORE	5		DOMESTIC FARM WINERY	0		LIQUOR STORE	0		WHOLESALE	0
	BEER / WINE STORE (PEND)	1		DOMESTIC FARM WINERY (PEND)	0		LIQUOR STORE (PEND)	0		WHOLESALE (PEND)	0
	BEER / WINE STORE / SAMPLING	0		GOVERNMENT	0		LIQUOR STORE / SAMPLING	1			
	BEER / WINE STORE / SAMPLING (PEND)	0		GOVERNMENT (PEND)	0		LIQUOR STORE / SAMPLING (PEND)	0		1 MILE BUFFER	

Total Count: 10 liquor licenses