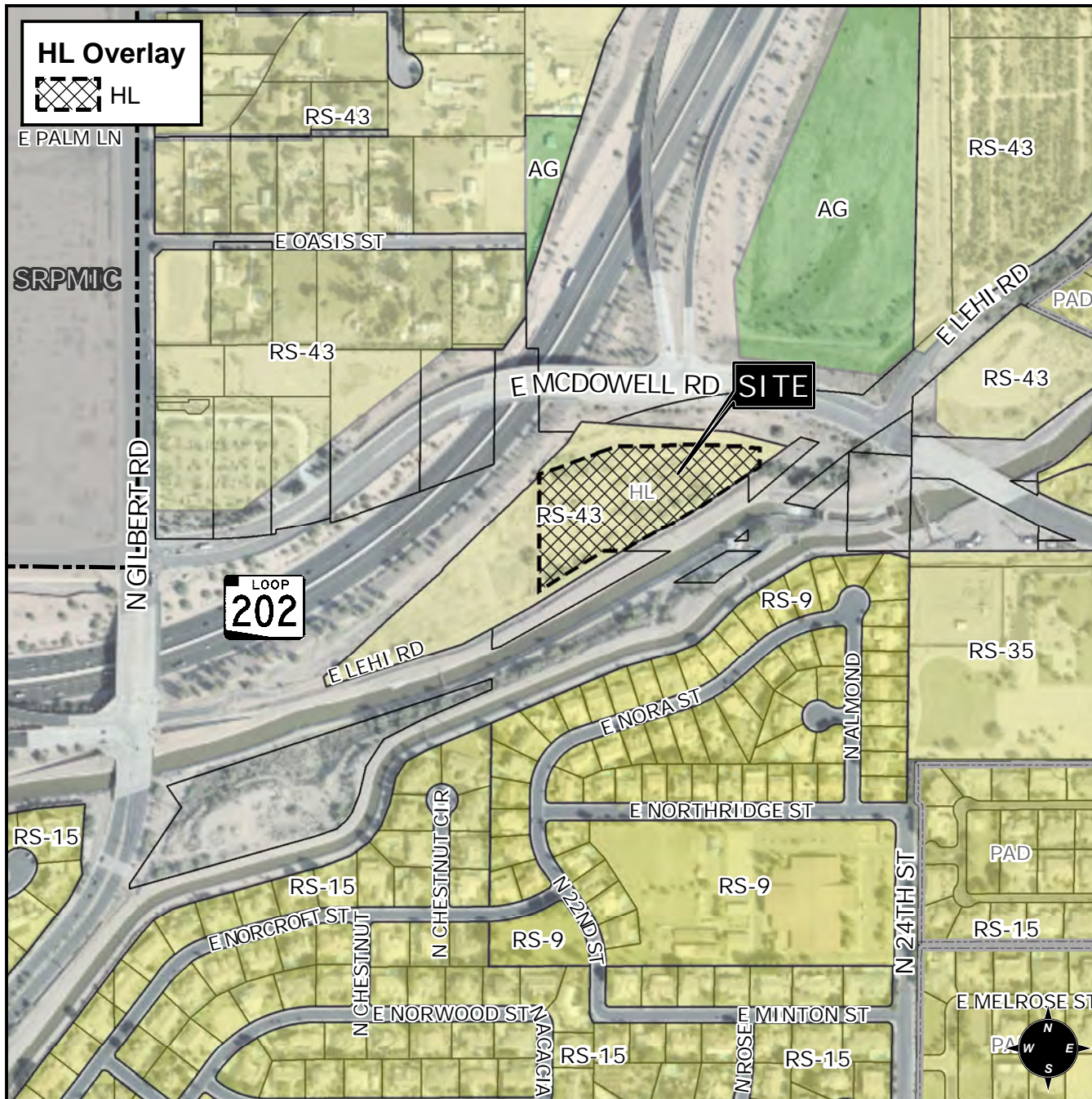


# Historic Preservation Vicinity Map: ZON21-00129

## Case Details



CASE:

PRE-PLAT : ☐

ZON21-00129

### SITE / ADDRESS:

District 1. Within the 2200 to 2400 blocks of East McDowell Road (south side). Located east of Gilbert Road on the south side of McDowell Road. (3.85± acres)

### REQUEST:

Consider removing a Historic Landmark Overlay for the Crismon Farm Homestead.

