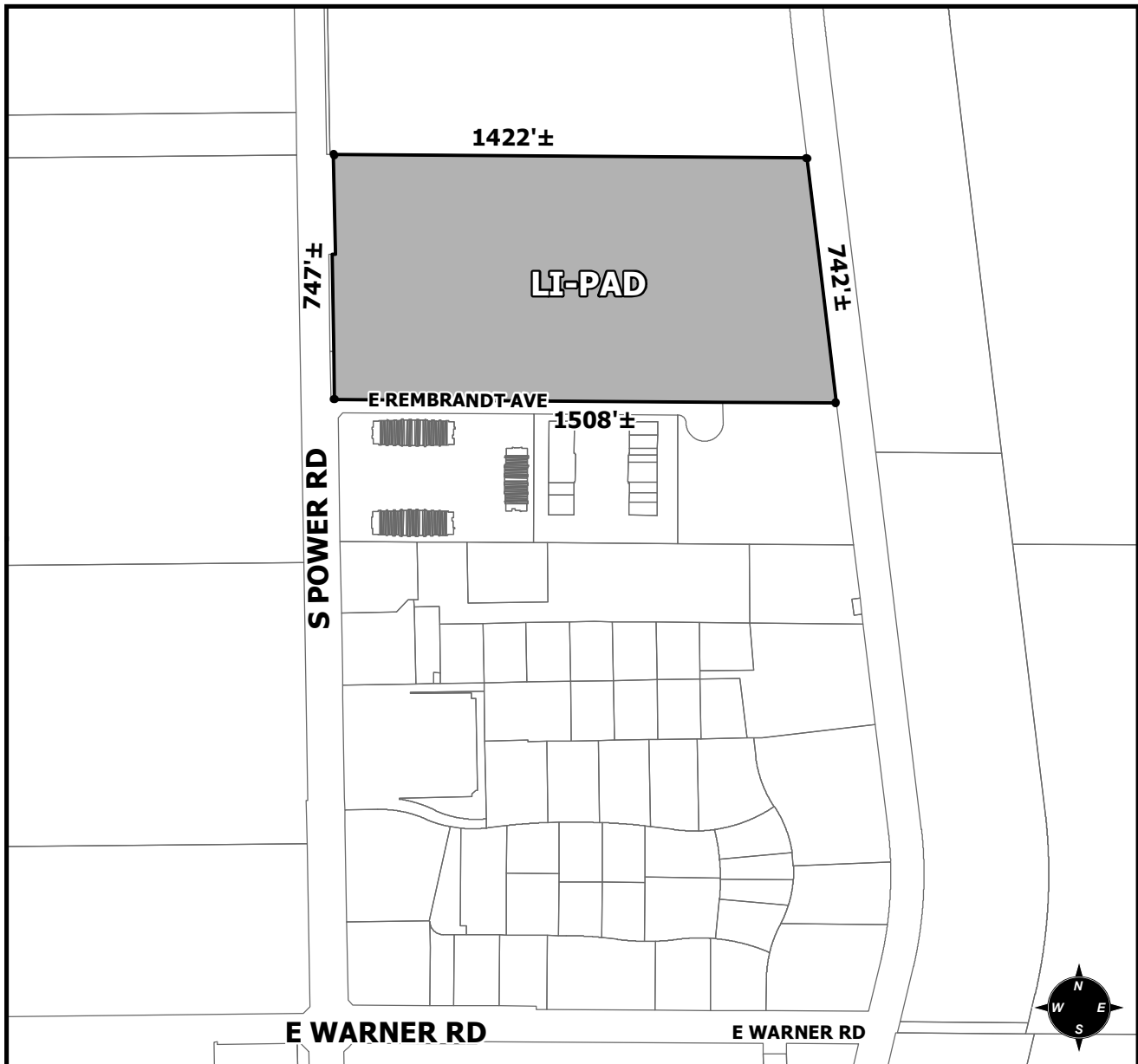




# OFFICIAL SUPPLEMENTARY ZONING MAP AMENDING THE CITY OF MESA ZONING MAP



**CASE: ZON19-00507**  
**ACREAGE: 25±**  
**REQUEST: REZONE FROM LC AND LI TO LI-PAD**

**ORDINANCE:** \_\_\_\_\_

Please be advised that the attached zoning changes were approved by the Mesa City Council on \_\_\_\_\_, 2021 by Ordinance # \_\_\_\_\_. If you have any questions concerning these changes, contact the City of Mesa Planning Division at 480-644-2385.

**ATTEST:** \_\_\_\_\_ **DATE:** \_\_\_\_\_

**MAYOR**

**CITY CLERK**