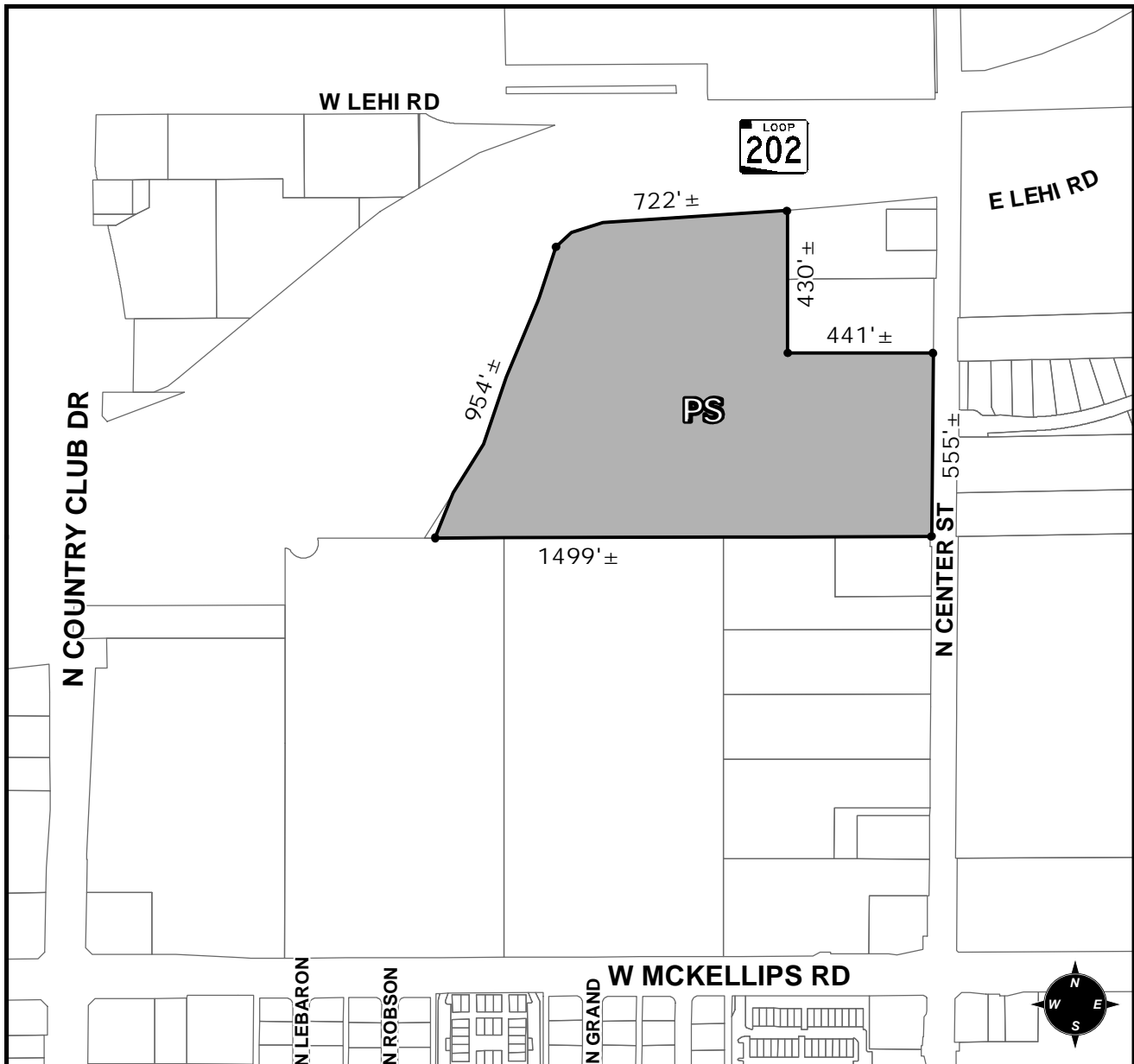




# OFFICIAL SUPPLEMENTARY ZONING MAP AMENDING THE CITY OF MESA ZONING MAP



CASE: ZON21-00191  
ACREAGE: 24.42±  
REQUEST: REZONE FROM AG AND LI TO PS.

ORDINANCE: \_\_\_\_\_

Please be advised that the attached zoning changes were approved by the Mesa City Council on \_\_\_\_\_, 2021 by Ordinance # \_\_\_\_\_. If you have any questions concerning these changes, contact the City of Mesa Planning Division at 480-644-2385.

\_\_\_\_\_  
MAYOR

ATTEST: \_\_\_\_\_  
CITY CLERK

DATE: \_\_\_\_\_