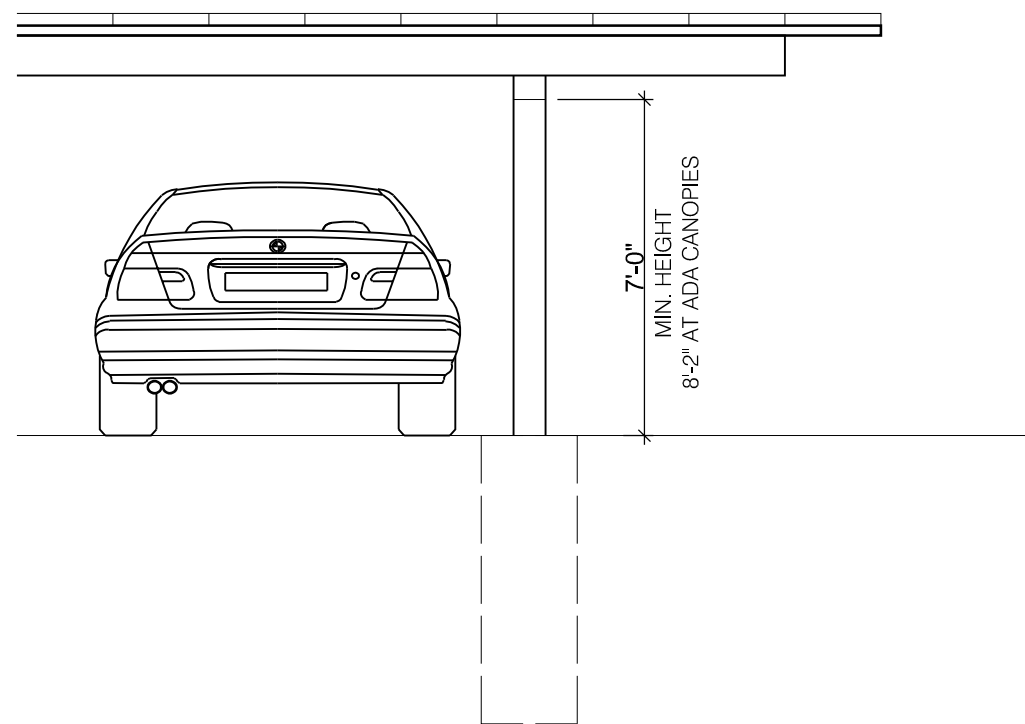
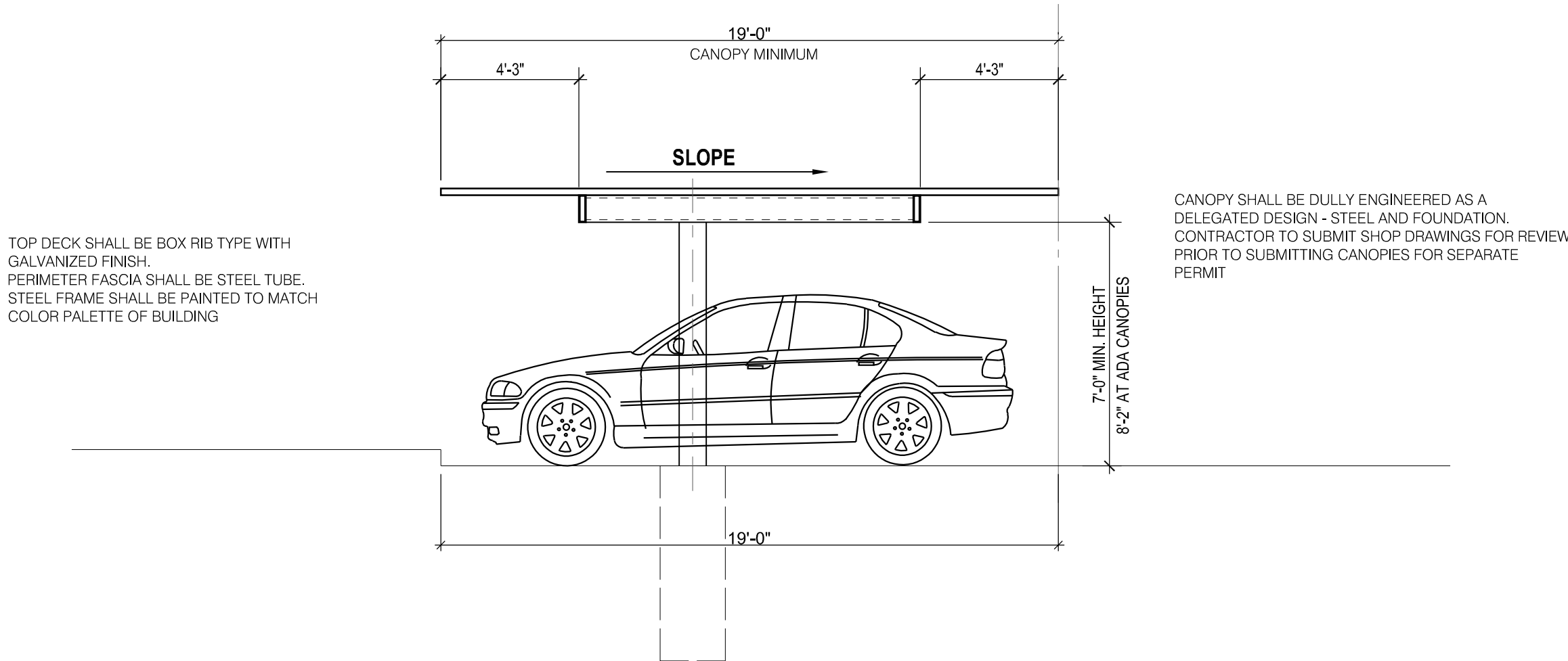


5 REFUSE BACK ELEVATION DETAIL
A6.1 Scale: 1/2" = 1'-0"

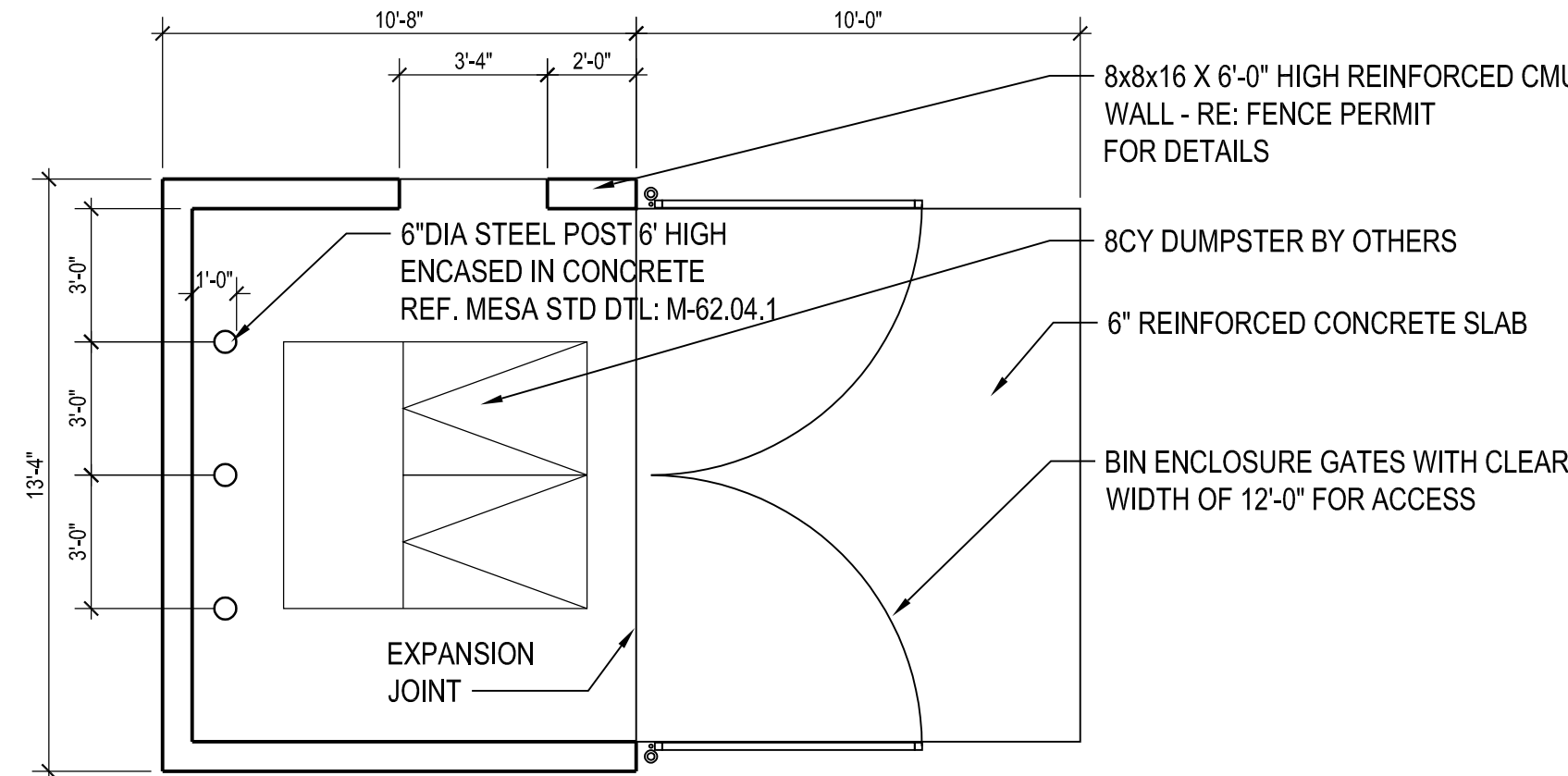
4 REFUSE SIDE ELEVATION DETAIL
A6.1 Scale: 1/2" = 1'-0"



2 BASIS OF DESIGN - PARKING CANOPY ELEVATION
A6.1 Scale: 1/4" = 1'-0"



1 BASIS OF DESIGN - PARKING CANOPY
A6.1 Scale: 1/4" = 1'-0"



3 SINGLE BIN CONTAINMENT PLAN
A6.1 Scale: 1/4" = 1'-0"

02 MARCH 2021

DRAWN BY: EB CHECKED BY: RG

PROJECT # 20120

PLANNING

CABANA SOUTHERN
GREENLIGHT COMMUNITIES
MESA, AZ, USA

SITE DETAILS

A6.1

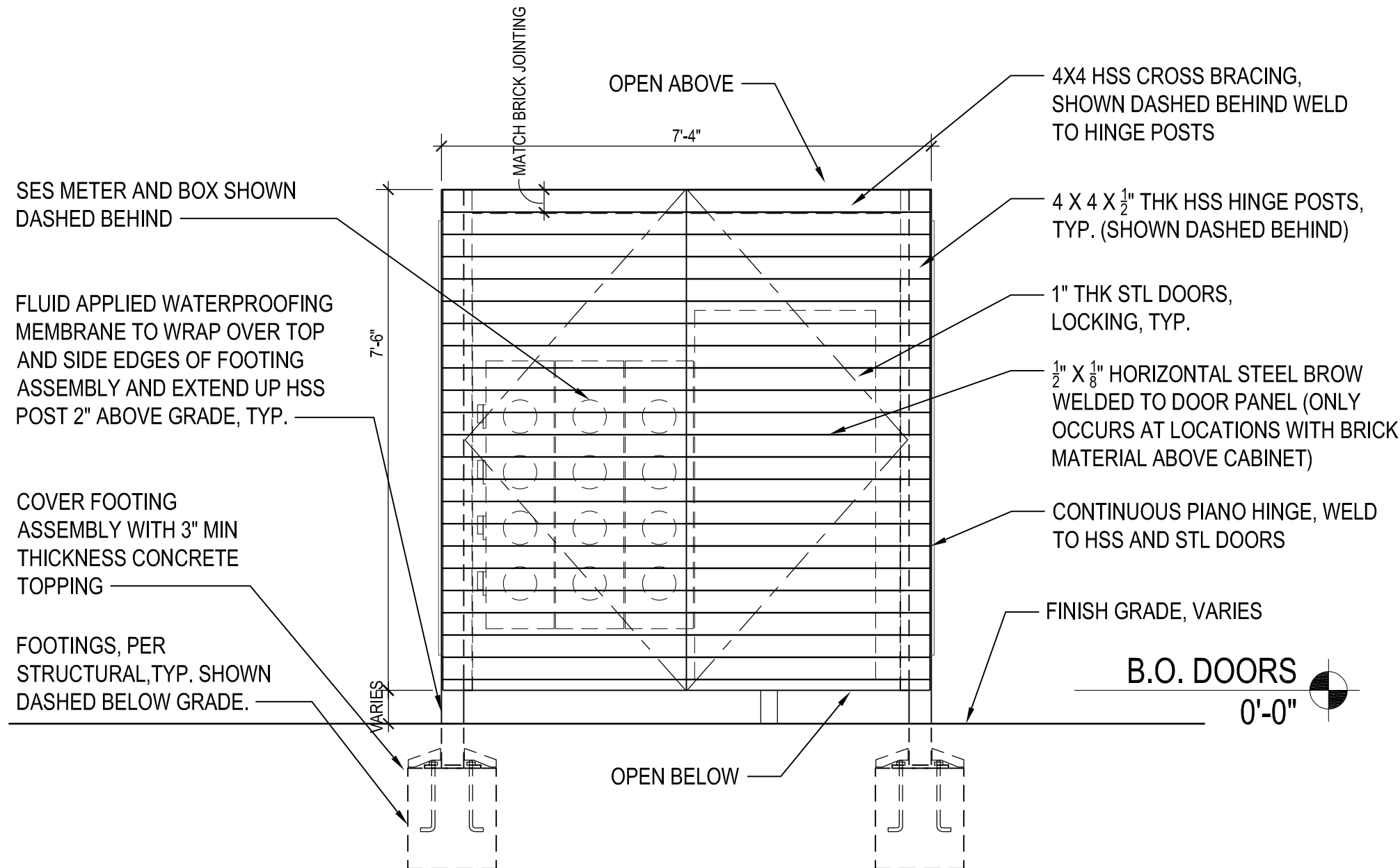
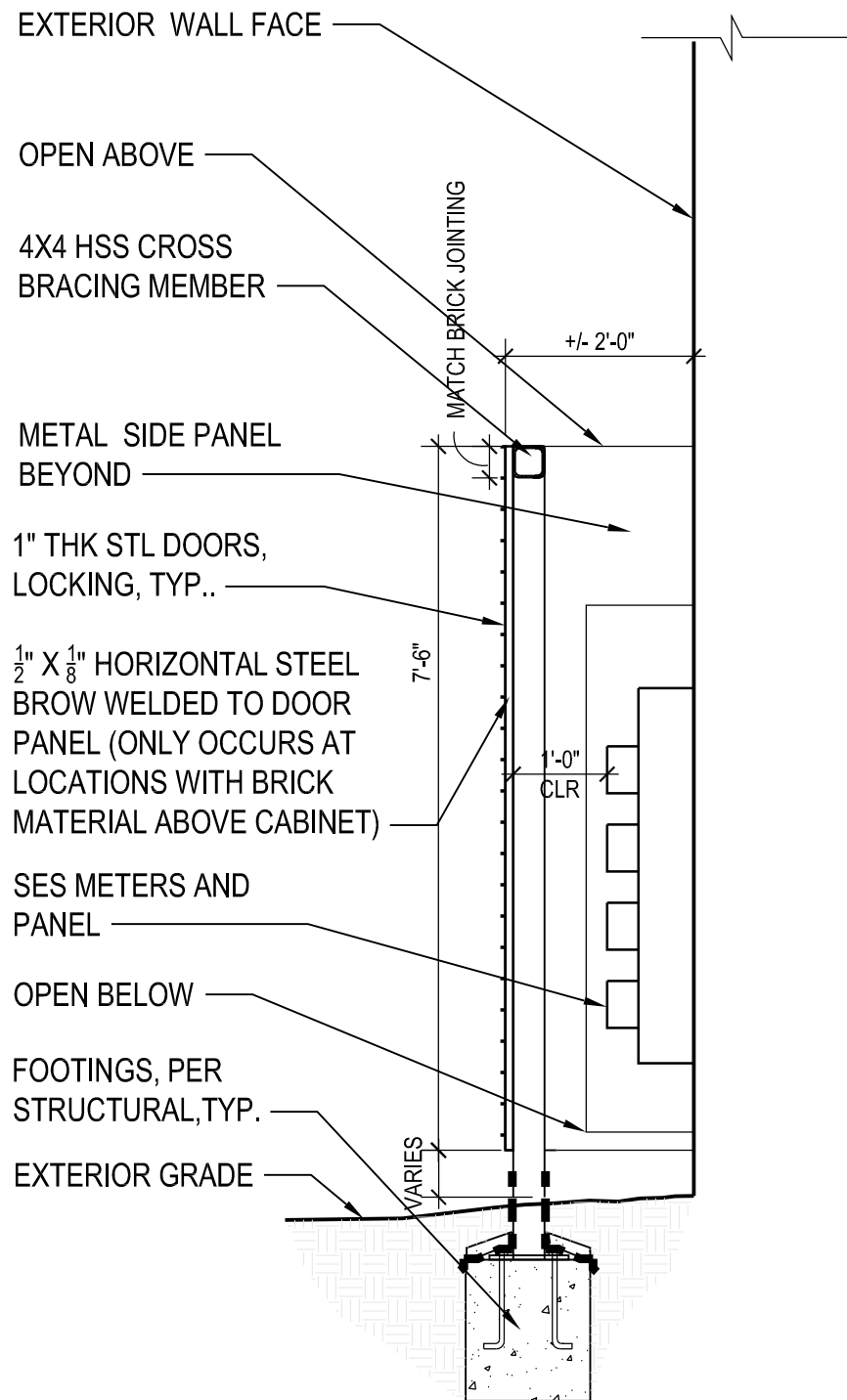
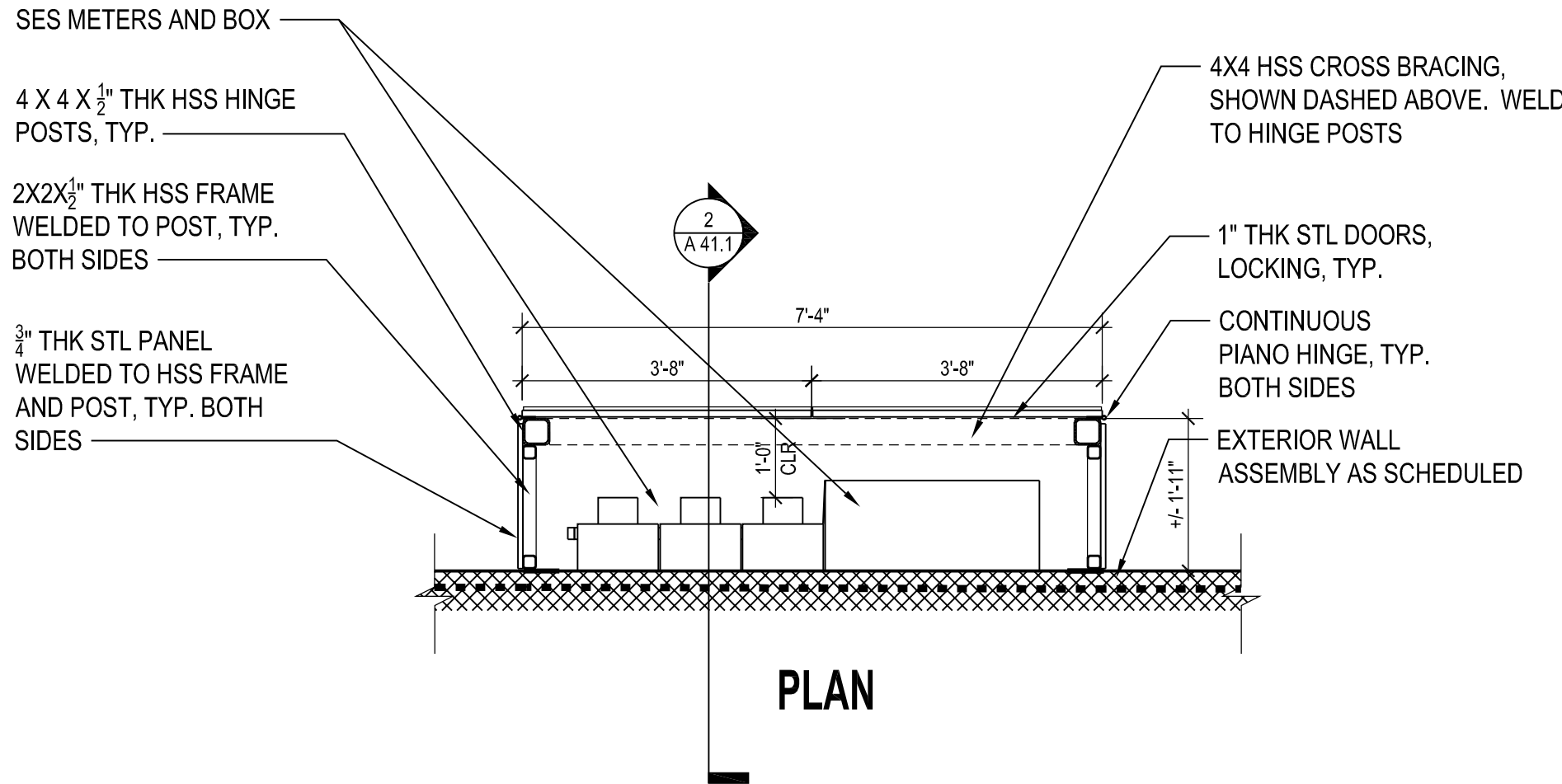
REVISIONS

NO.	DATE	DESCRIPTION
-	-	-
-	-	-
-	-	-
-	-	-
-	-	-
-	-	-

WORKSBUREAU
2524 NORTH 24TH STREET
PHOENIX ARIZONA 85008 USA
+1 602 324 6000

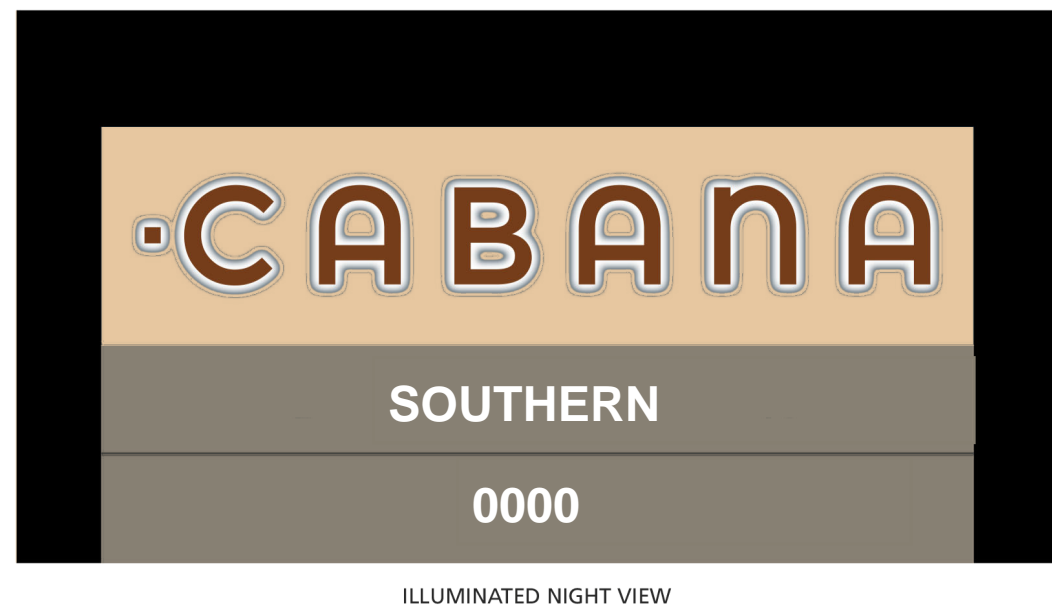
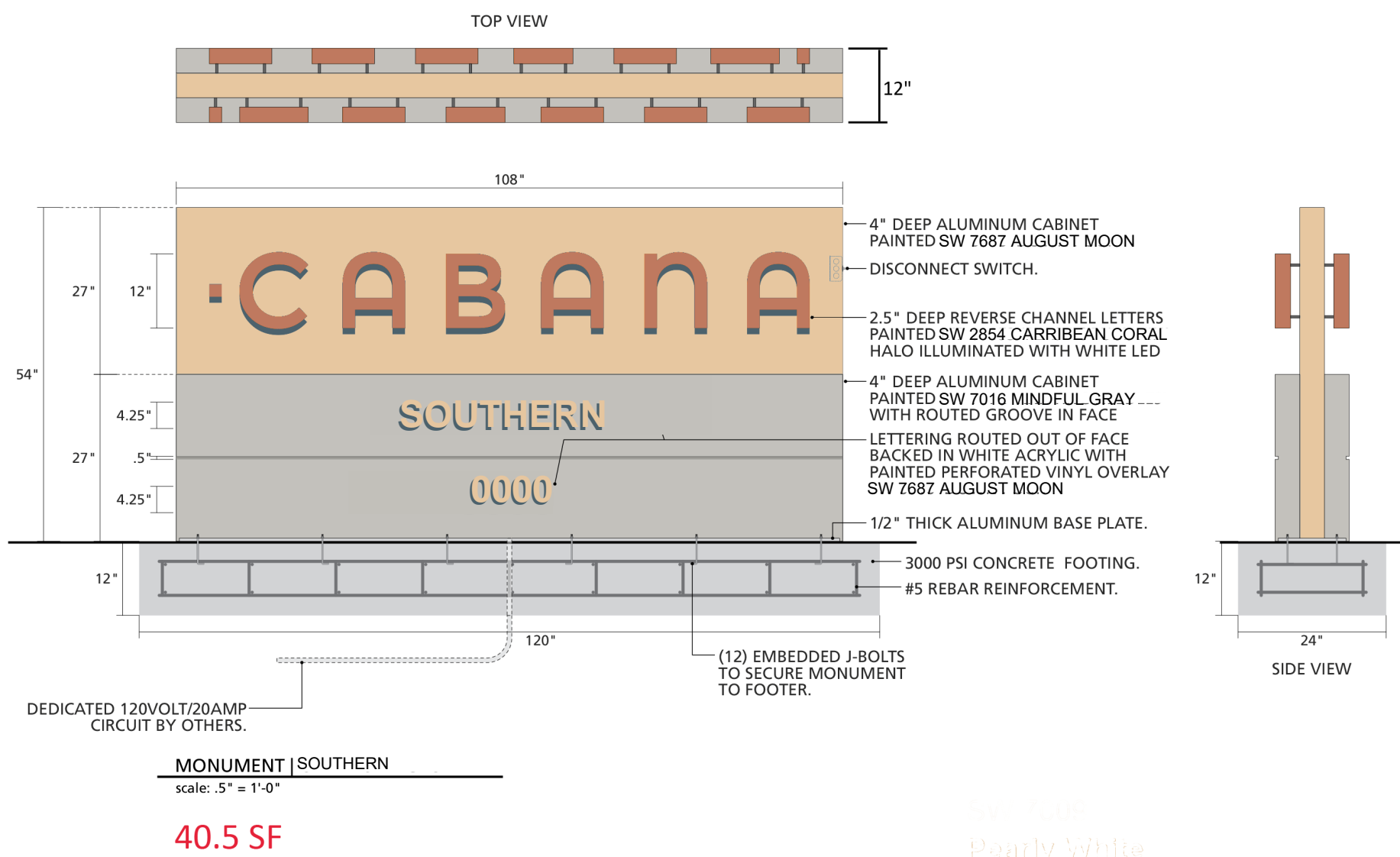
8
SHEET SCALE

FINISH NOTE: PAINT STEEL TO MATCH COLOR OF FACADE



3 SECTION @ SES CABINET
A6.2 Scale: 1/2" = 1'-0"

2 SES CABINET_3X4
A6.2 Scale: 1/2" = 1'-0"



1 BASIS OF DESIGN - MONUMENT SIGN
A6.2 Scale: 1/2" = 1'-0"

02 MARCH 2021

DRAWN BY: EB CHECKED BY: RG

PROJECT # 20120

PLANNING

A6.2

CABANA SOUTHERN
GREENLIGHT COMMUNITIES
MESA, AZ, USA

SITE DETAILS

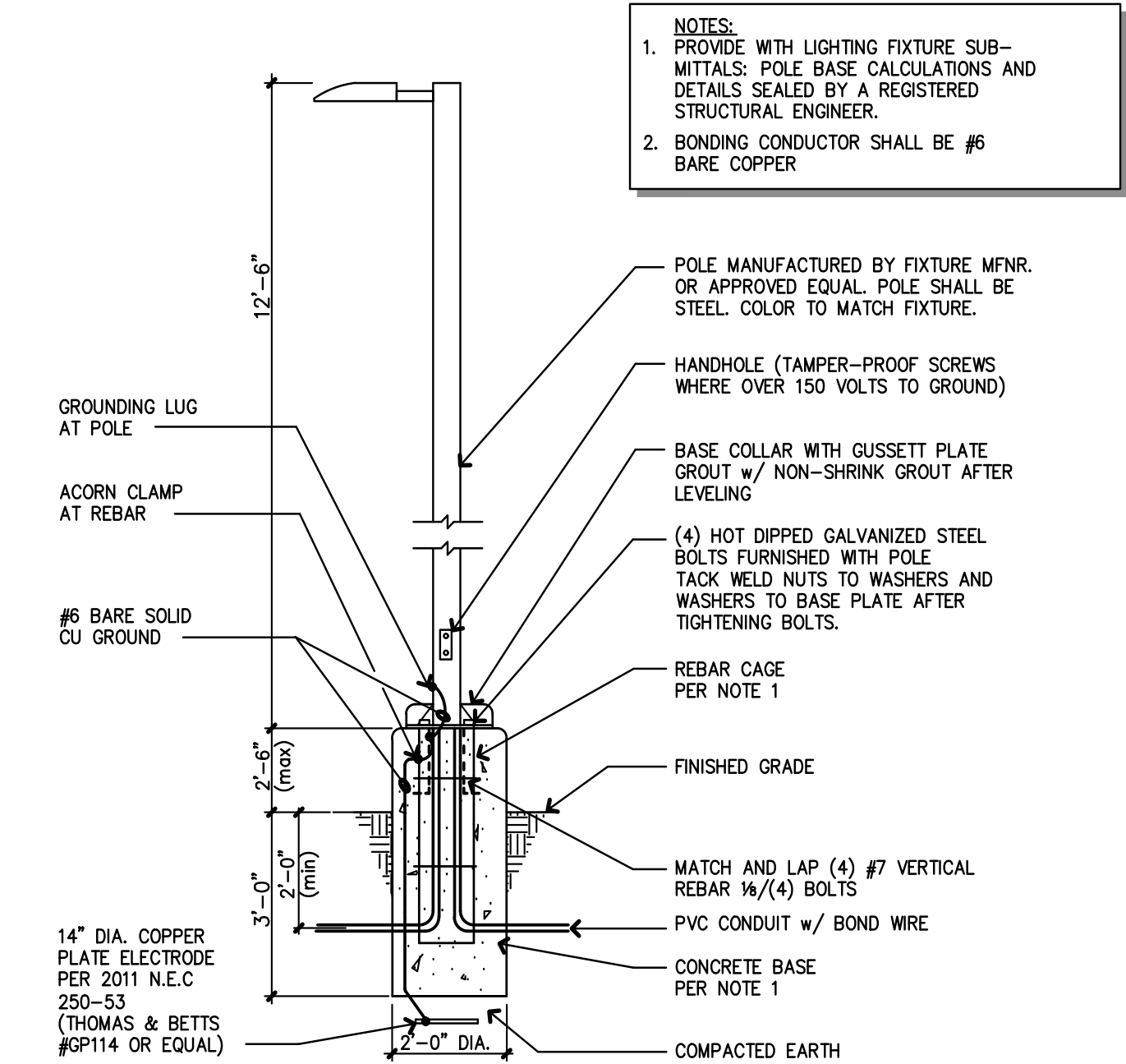
REVISIONS		NO.	DATE	DESCRIPTION
		-	-	-
		-	-	-
		-	-	-
		-	-	-
		-	-	-

WORKSBUREAU
2524 NORTH 24TH STREET
PHOENIX ARIZONA 85008 USA
+1 602 324 6000

8
SHEET SCALE

4 POLE MOUNTED SITE LIGHT FIXTURE DETAIL

A6.3 Scale: NTS



DESCRIPTION

The Galleon™ LED luminaire delivers exceptional performance in a highly scalable, low profile design. Patented, high-efficiency AccuLED Optics™ system provides uniform and energy conscious illumination to walkways, parking lots, roadways, building areas and security lighting applications. IP66 rated and ULcUL Listed for wet locations.

SPECIFICATION FEATURES

Construction
Extruded aluminum driver enclosure thermally isolated from Light Squares for optimal thermal performance. Heavy-wall, die-cast aluminum end caps enclose housing and die-cast aluminum heat sinks. A unique, patent pending interlocking housing and heat sink provides scalability with superior structural rigidity. 3G vibration tested and rated. Optional tool-less hardware available for ease of entry into electrical chamber. Housing is IP66 rated.

Optics
Patented, high-efficiency injection-molded AccuLED Optics technology. Optics are precisely designed to shape the distribution maximizing efficiency and application spacing. AccuLED Optics create consistent distributions with the scalability to meet customized application requirements. Offered standard in 4000K (+/- 275K) CCT 70 CRI. Optional 3000K, 5000K and 6000K CCT.

McGraw-Edison

Catalog #	Type
Project	
Comments	Date
Prepared by	

Electrical
LED drivers are mounted to removable tray assembly for ease of maintenance. 120-277V 50/60Hz, 347V 60Hz or 480V 60Hz operation. 480V is compatible for use with 480V Wye systems only. Standard with 0-10V dimming. Shipped standard with Cooper Lighting Solutions proprietary circuit module designed to withstand 10kV of transient line surge. The Galleon LED luminaire is suitable for operation in -40°C to 40°C ambient environments. For applications with ambient temperatures exceeding 40°C, specify the HA (High Ambient) option. Light Squares are IP66 rated. Greater than 90% lumen maintenance expected at 60,000 hours. Available in standard 1A drive current and optional 600mA, 800mA and 1200mA drive currents (nominal).

Mounting
STANDARD ARM MOUNT: Extruded aluminum arm includes internal bolt guides allowing for easy positioning of fixture during mounting. When mounting two or more luminaires at 90° and 120° apart, the EA extended arm

may be required. Refer to the arm mounting requirement table. Round pole adapter included. For wall mounting, specify wall mount bracket option. QUICK MOUNT ARM: Adapter is bolted directly to the pole. Quick mount arm slide into place on the adapter and is secured via two screws, facilitating quick and easy installation. The versatile, patent pending, quick mount arm accommodates multiple drill patterns ranging from 1-1/2" to 4-7/8". Removal of the door on the quick mount arm enables wiring of the fixture without having to access the driver compartment. A knock-out enables round pole mounting.

Finish
Housing finished in super durable TGIC polyester powder coat paint. 2.5 mil nominal thickness for superior protection against fade and wear. Heat sink is powder coated black. Standard housing colors include black, bronze, grey, white, dark platinum and graphite metallic. RAL and custom color matches available.

Warranty
Five-year warranty.



DESCRIPTION

The Galleon™ Wall LED luminaire's appearance is complementary with the Galleon area and site luminaire bringing a modern architectural style to lighting applications. Flexible mounting options accommodate wall surfaces in both an upward and downward configuration. The Galleon family of LED products deliver exceptional performance with patented, high-efficiency AccuLED Optics™, providing uniform and energy conscious lighting for parking lots, building and security lighting applications.

SPECIFICATION FEATURES

Construction
Driver enclosure thermally isolated from optics for optimal thermal performance. Heavy wall aluminum housing die-cast with integral external heat sinks to provide superior structural rigidity and an IP66 rated housing. Overall construction passes a 1.5G vibration test to ensure mechanical integrity. UPLIGHTING: Specify with the UPL option for inverted mount upright housing with additional protections to maintain IP rating.

Optics
Choice of thirteen patented, high-efficiency AccuLED Optics. The optics are precisely designed to shape the distribution maximizing efficiency and application spacing. AccuLED Optics create consistent distributions with the scalability to meet customized application requirements. Offered standard in 4000K (+/- 275K) CCT and minimum 70 CRI. Optional 3000K, 5000K

and 6000K CCT. Greater than 90% lumen maintenance expected at 60,000 hours. Available in standard 1A drive current and optional 1200mA, 800mA, and 600mA drive currents.

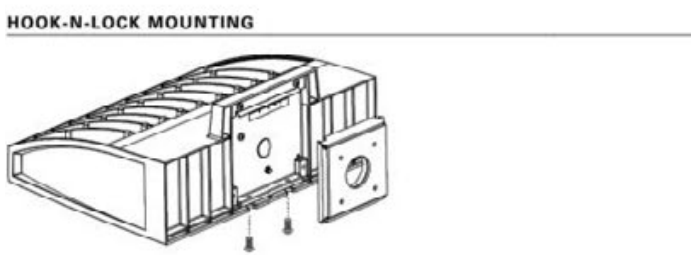
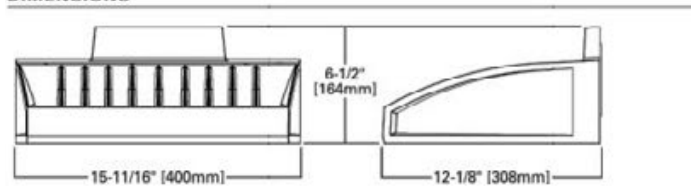
Electrical
LED drivers are mounted for ease of maintenance. 120-277V 50/60Hz, 347V or 480V 60Hz operation. 480V is compatible for use with 480V Wye systems only. Drivers are provided standard with 0-10V dimming. An optional Cooper Lighting Solutions proprietary surge protection module is available and designed to withstand 10kV of transient line surge. The Galleon Wall LED luminaire is suitable for operation in -40°C to 40°C ambient environments. For applications with ambient temperatures exceeding 40°C, specify the HA (High Ambient) option. Emergency egress options for -20°C ambient environments and occupancy sensor available.

Mounting
Gasketed and zinc plated rigid steel mounting attachment fits directly to 4" box or wall with the Galleon Wall "hook-N-Lock" mechanism for quick installation. Secured with two captive corrosion resistant black oxide coated allen head set screws which are concealed but accessible from bottom of fixture.

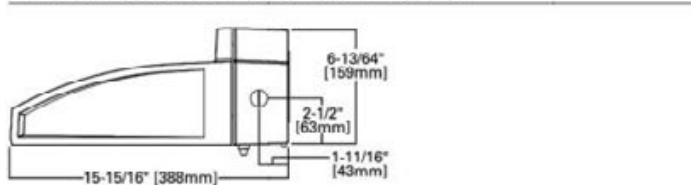
Finish
Housing finished in super durable TGIC polyester powder coat paint. 2.5 mil nominal thickness for superior protection against fade and wear. Standard colors include black, bronze, grey, white, dark platinum and graphite metallic. RAL and custom color matches available. Consult the McGraw-Edison Architectural Colors brochure for the complete selection.

Warranty
Five-year warranty.

DIMENSIONS



BATTERY BACKUP AND THRU-BRANCH BACK BOX

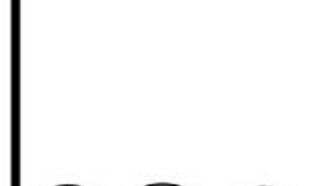


McGraw-Edison

Catalog #	Type
Project	S6
Comments	Date
Prepared by	



DIMENSIONS



DESCRIPTION

The Halo Surface LED Downlight (SLD) incorporates WaveStream™ technology to create an ultra-low profile surface mounting luminaire with the performance and look of a traditional downlight. SLD6 is designed for installation in many 3-1/2" and 4" square, octagon or round junction boxes. And may also retrofit in 5" and 6" IC and Non-IC recessed housings.* Suitable for residential or commercial installations. Ideal for closets, storage areas, attics and basements. Compliant with NFPA 70, NEC Section 410.16 (A)(3) and 410.16 (C)(5).

SPECIFICATION FEATURES

CONSTRUCTION
• Die cast aluminum trim ring, and die formed aluminum frame

OPTICS
• WaveStream™ technology provides uniform luminance from a low profile flat lens

RECESSED HOUSING MOUNTING
• May be installed in IC recessed housings in direct contact with insulation

DESIGNER TRIMS
Accessories (sold separately) SLD designer trims are accessory rings that attach to the SLD for a permanent finish.* Refer to SLD accessories specification sheet for details.

ELECTRICAL JUNCTION BOX MOUNTING
• SLD may be used in compatible electrical junction boxes in direct contact with insulation including spray foam insulation

LED
• Linear LED arrays are integrated in trim perimeter

WARRANTY
Cooper Lighting Solutions provides a five year limited warranty on the SLD LED

Catalog #	Type
Project	S7
Comments	Date
Prepared by	

SLD 1200 Series
SLD6128xxWH
2700K, 3000K, 3500K, and 4000K

SLD6129xxWH
2700K, 3000K, 3500K, and 4000K

6\" Surface LED Downlight

High Lumen 1200 Series

Suitable for ceiling or wall electrical junction boxes

Suitable for 5\" & 6\" recessed housing retrofit (IC, Non-IC & AIR-TITE™)



ENERGY DATA

	80 CRI	90 CRI
Lumen (4000K model)	1215	1000
Input Voltage	120V	120V
Frequency	50/60 Hz	50/60 Hz
Input Current	0.12 A	0.12 A
Input Power	14.8 W	14.8 W
Efficiency (4000K model)	82 lm/W	68 lm/W
THD	≤ 20%	
Power Factor	≥ 0.95	
T Ambient	-30 ~ +40°C	
Sound Rating	Class A	

3 POLE MOUNTED SITE LIGHT FIXTURE CUT SHEET

A6.3 Scale: NTS



2 SURFACE MOUNTED SITE LIGHT FIXTURE CUTSHEET

A6.3 Scale: NTS



1 UNDER CANOPY SITE LIGHT FIXTURE CUTSHEET

A6.3 Scale: NTS



02 MARCH 2021

DRAWN BY: EB CHECKED BY: RG

PROJECT # 20120

PLANNING

A6.3

CABANA SOUTHERN GREENLIGHT COMMUNITIES MESA, AZ, USA

SITE LIGHTING CUT SHEETS & DETAIL

WORKSBUREAU
2524 NORTH 24TH STREET
PHOENIX ARIZONA 85008 USA
+1 602 324 6000

REVISIONS	NO.	DATE	DESCRIPTION	Type
	1			
	2			
	3			
	4			
	5			
	6			
	7			
	8			
	9			
	10			

SHEET SCALE