



DESIGN REVIEW BOARD

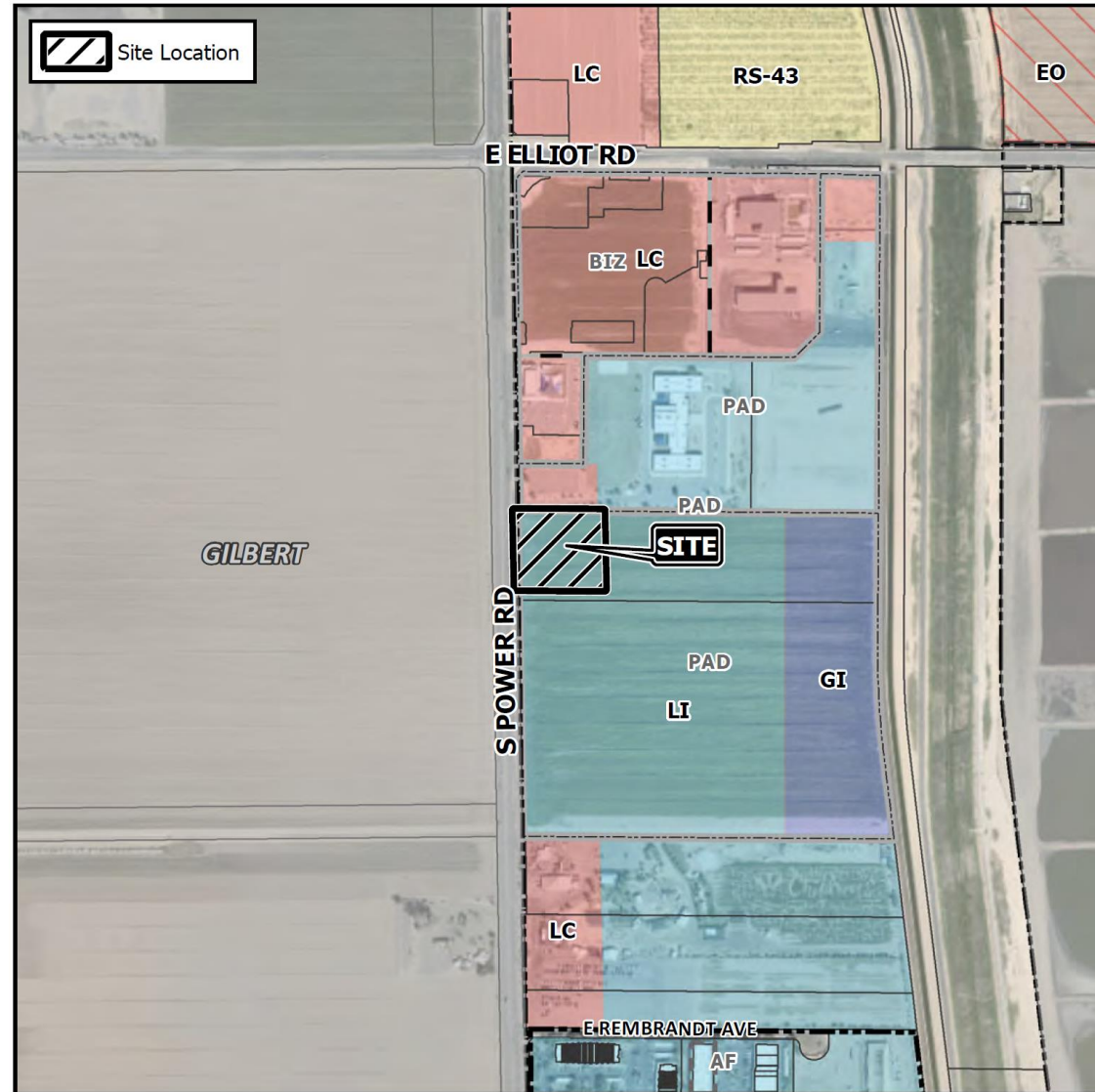
May 11, 2021

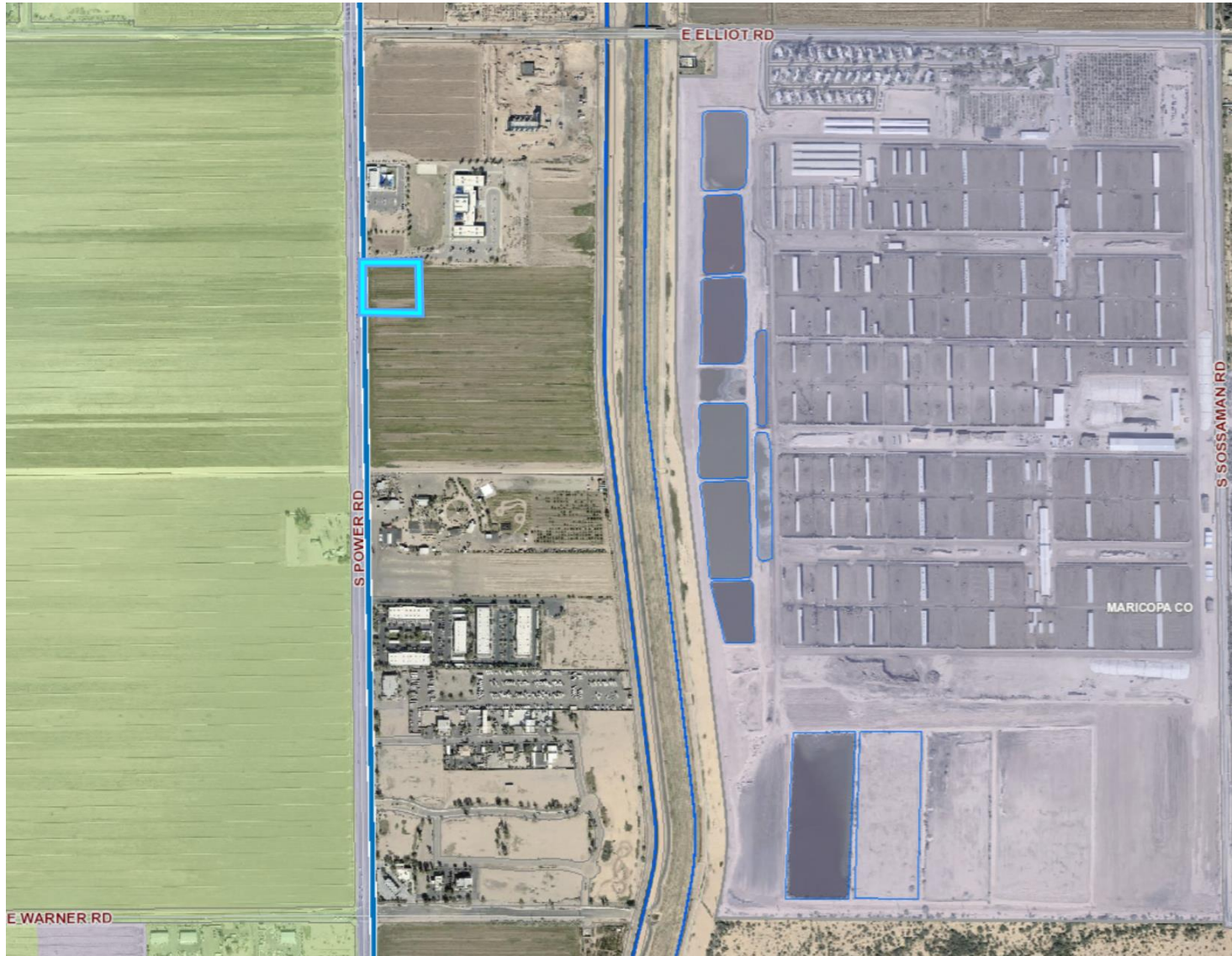


DRB21-00038

Location

- East side of Power Road.
- South of Elliot Road.





Request

- Design Review

Purpose

- Proposed self-storage

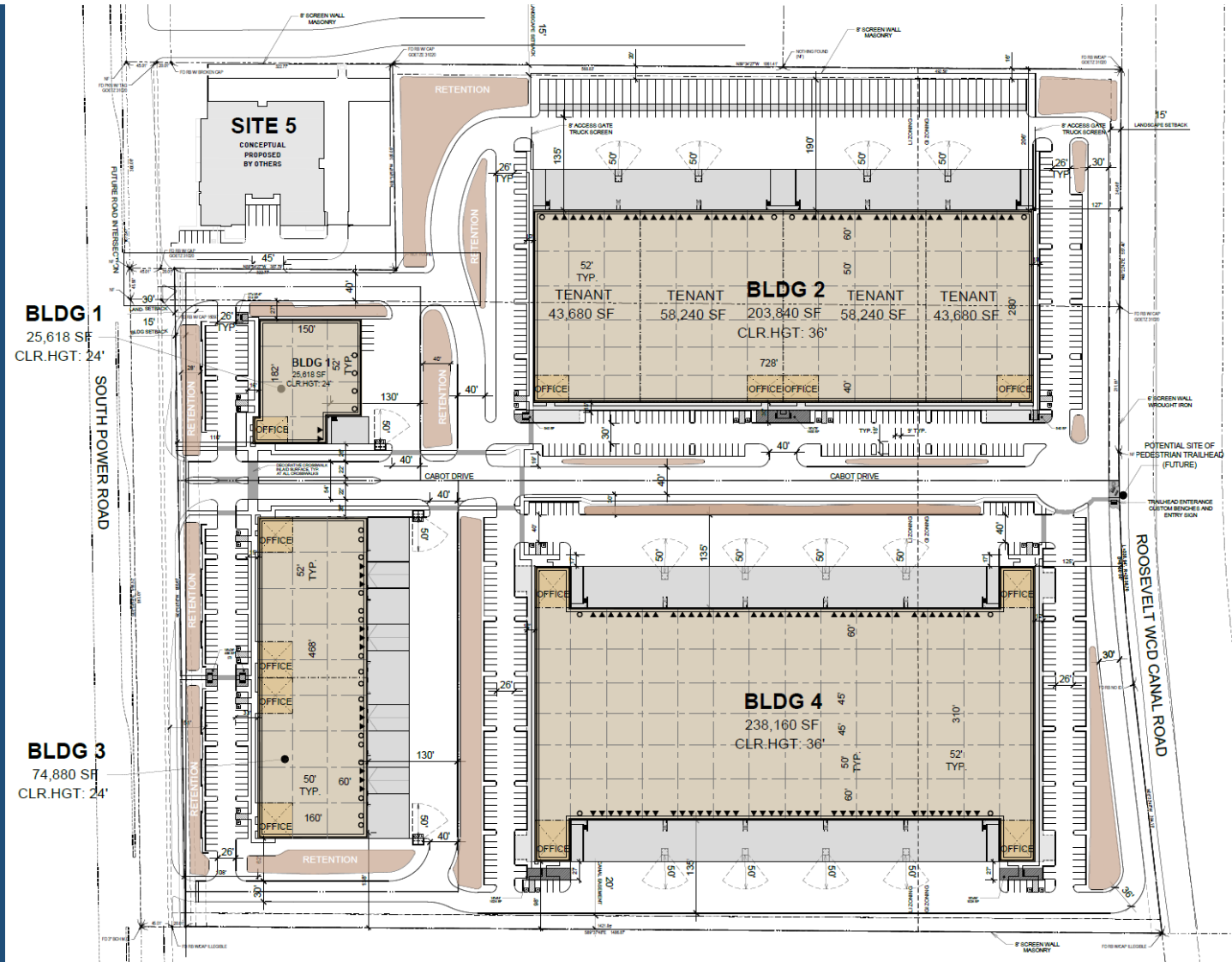
Site Photo



Looking east towards the site from Power Road

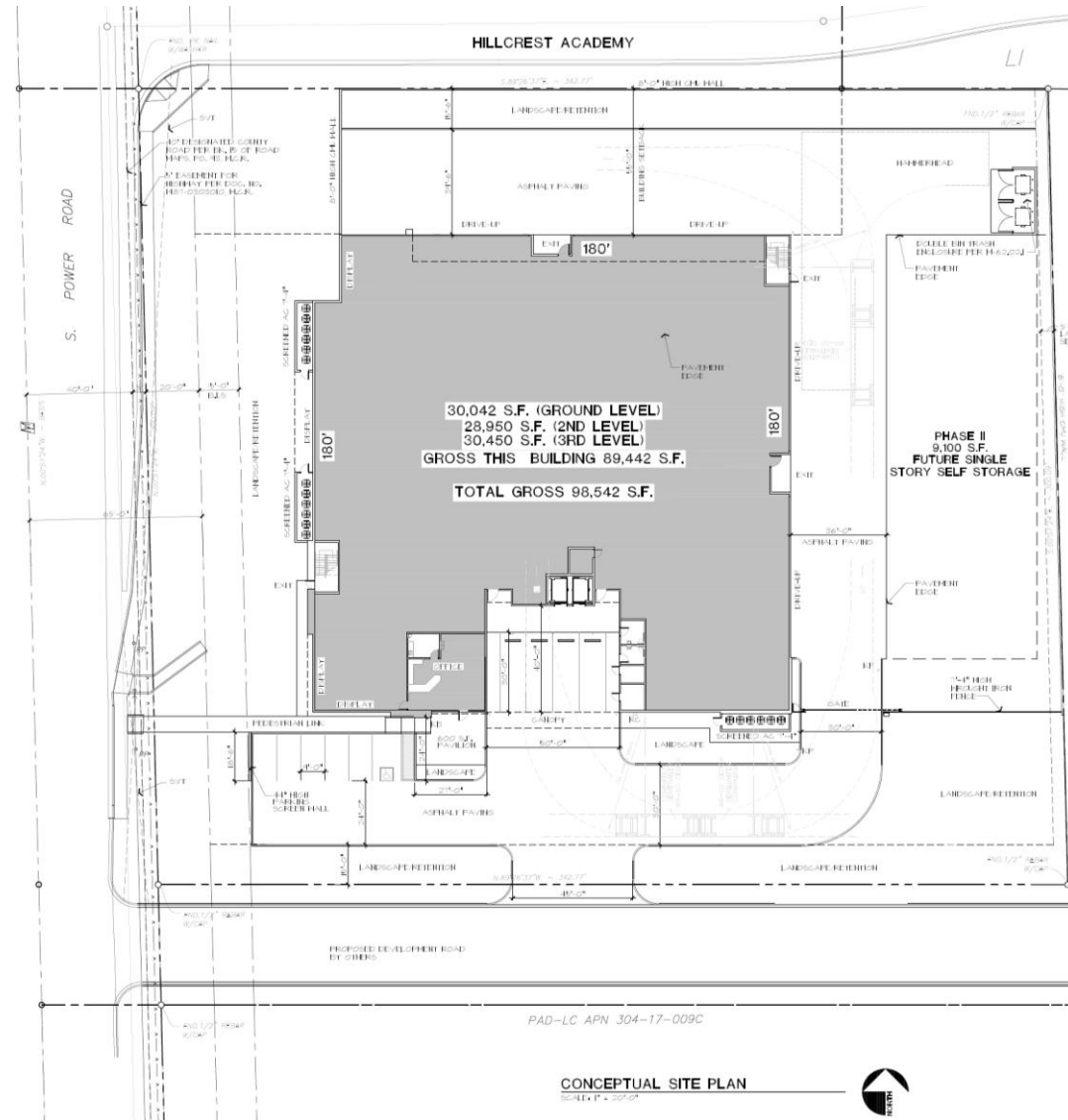
Contextual Site Plan

- Site 5 within the Power 42 industrial Park
- Three driveway access from Power Road.

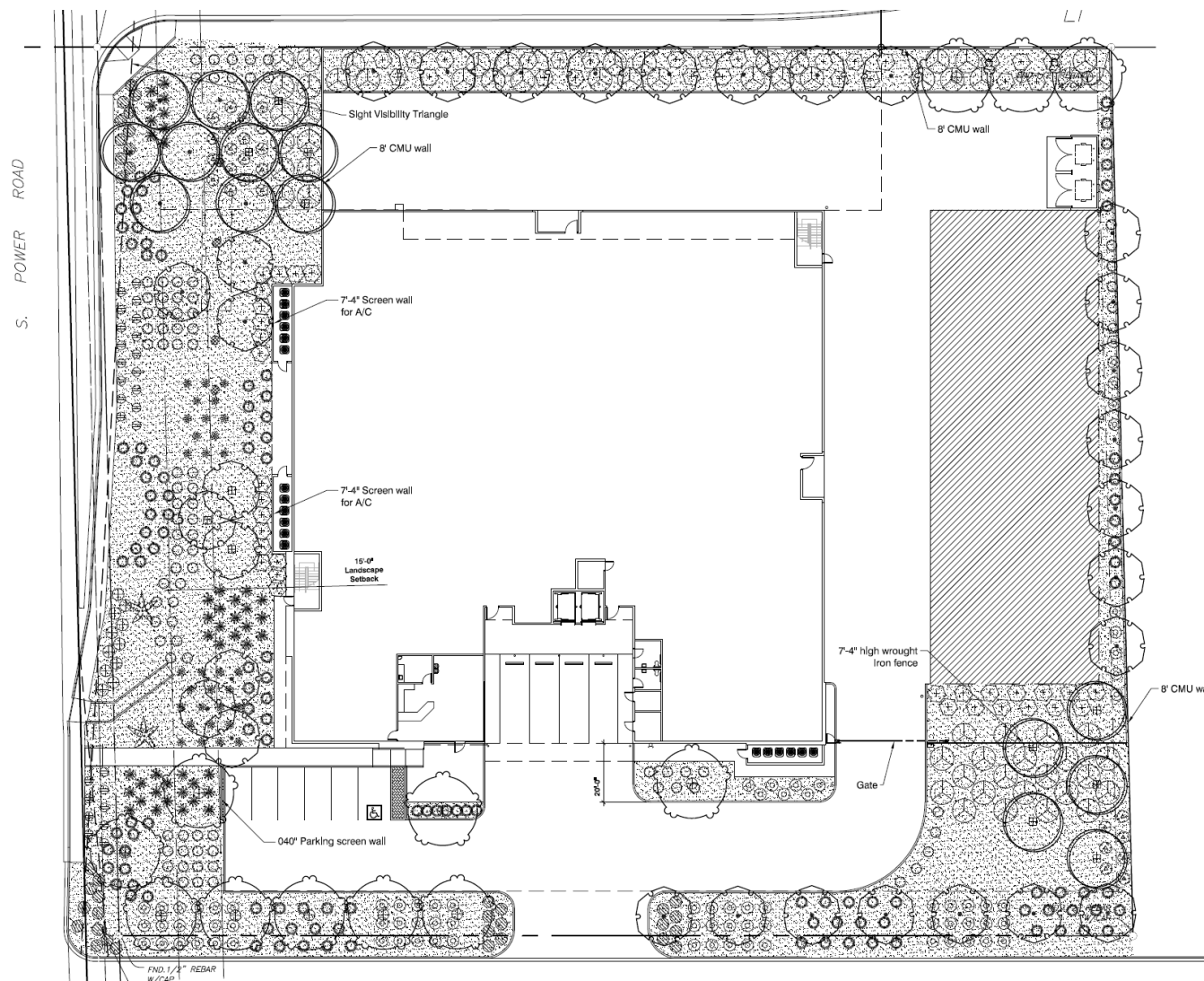


Site Plan

- Access from internal drive that connects with Power Road.
- Connected to sidewalk.
- Building entry and office faces south.




















Landscape Plan



Plant Legend


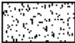
PLANT SCHEDULE

TREES	BOTANICAL / COMMON NAME	SIZE	QTY
	Parkinsonia praecox Palo Verde	24"box	9
	Parkinsonia praecox Palo Verde	36" Box	6
	Quercus virginiana "Heritage" Southern Live Oak	24"box	28
	Quercus virginiana "Heritage" Southern Live Oak	36" Box	3
	Washingtonia filifera California Fan Palm	20" Ht.	2
	x Chitalpa tashkentensis "Pink Dawn" Pink Dawn Chitalpa	24" Box	12
SHRUBS	BOTANICAL / COMMON NAME	SIZE	QTY
	Agave parryi Parry's Agave	5 gal.	34
	Caesalpinia pulcherrima "Phoenix" Phoenix Blvd Of Paradise	5 gal	60
	Convolvulus cneorum Bush Morning Glory	5 gal.	22
	Eremophila maculata "Valentine" Valentine Bush	5 gal	25
	Hesperaloe parviflora "Brakelights" TM Brakelights Red Yucca	5 gal	58
	Lantana montevidensis Trailing Lantana	1 gal	58
	Leucophyllum frutescens "Compacta" Compact Texas Ranger	5 gal	56
	Muhlenbergia capillaris "Regal Mist" TM Regal Mist Pink Muhly Grass	5 gal.	159
	Rosmarinus officinalis "Prostratus" Dwarf Rosemary	1 gal	52
	Ruellia penninsularis Baja Ruella	5 gal	86
	Russelia equisetiformis Firecracker Plant	5 gal	107

LANDSCAPE CALCULATIONS

Total Open Space Area	35,354 Square Feet	
Plant Material Coverage	17,700 Square Feet (50%)	
Total Parking lot trees	3	
Foundation base length	105'	
	REQUIRED	PROVIDED
Street Frontage Trees	12	24
36" Street Frontage Trees	6	6
Ocotillo substitution	-	-
24" Street Frontage Trees	6	18
Street Frontage Shrubs	72	144
5 Gal. Street Frontage Shrubs	36	85
36" box parking lot trees	3	3
Foundation base trees required	15	15
36" box foundation base trees	3	3

REFERENCE NOTES SCHEDULE

SYMBOL	ROCK DESCRIPTION	QTY	DETAIL
	1/4" Minus Decomposed Granite for dust control for future phase Madison Gold	9,097 sf	
SYMBOL	ROCK DESCRIPTION	QTY	DETAIL
	1/2" Screened Decomposed Granite Carmel	211.95 cy	

Elevations

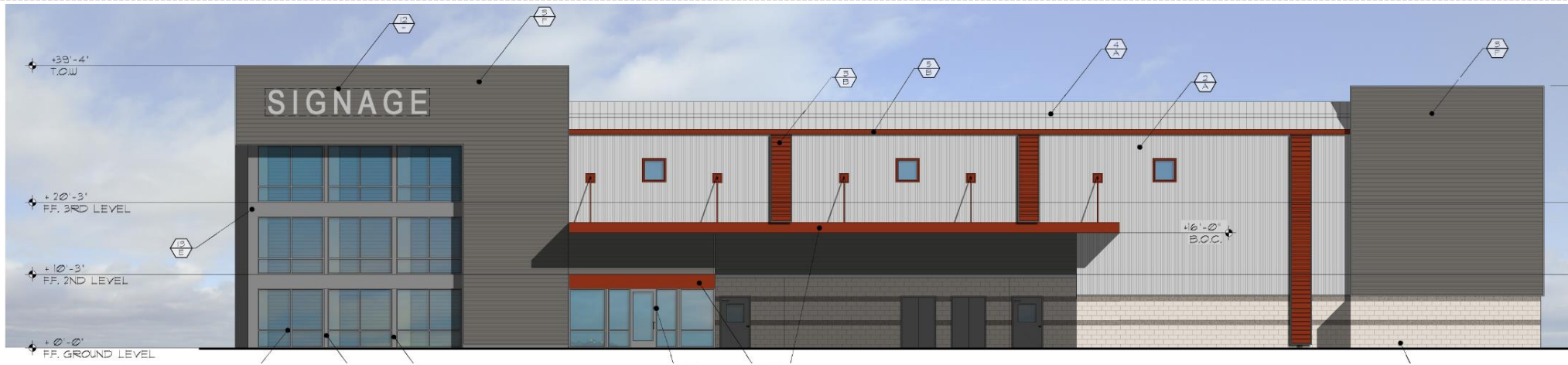


West Elevation facing Power Road



East Elevation

Elevations

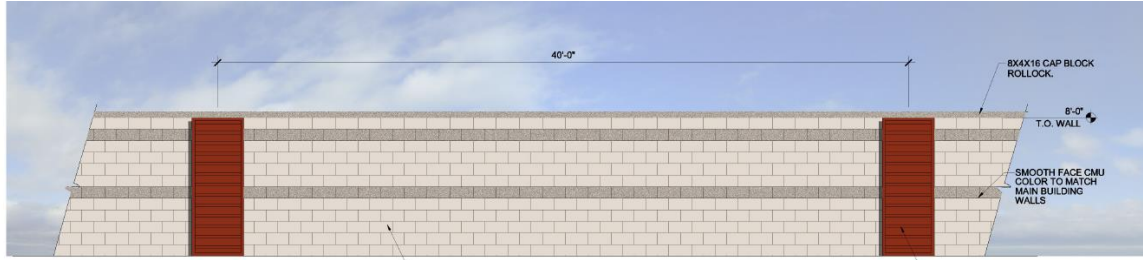


South Elevation

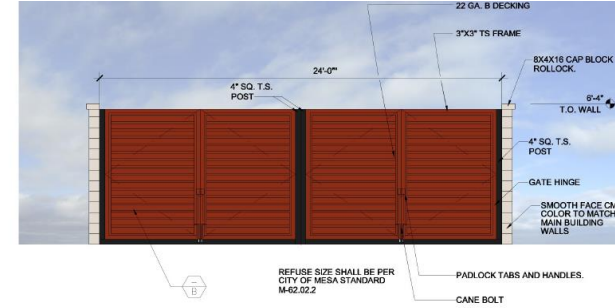


North Elevation

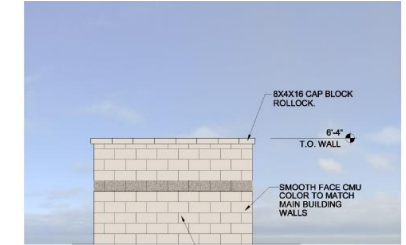
Elevations



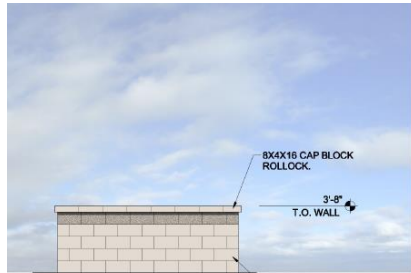
1 CMU SITE WALL ELEVATION
REFUSE SCALE: 1/4"=1'-0"



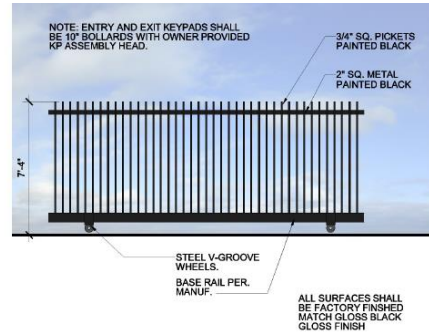
3 REFUSE GATE ELEVATION
REFUSE SCALE: NTS



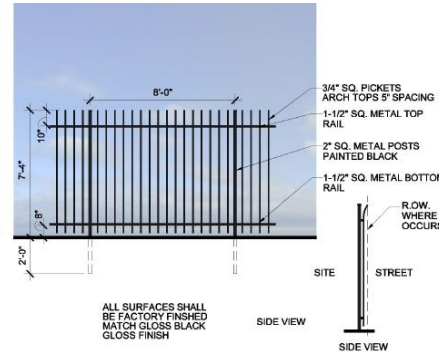
2 REFUSE WALL ELEVATION
REFUSE SCALE: 1/4"=1'-0"



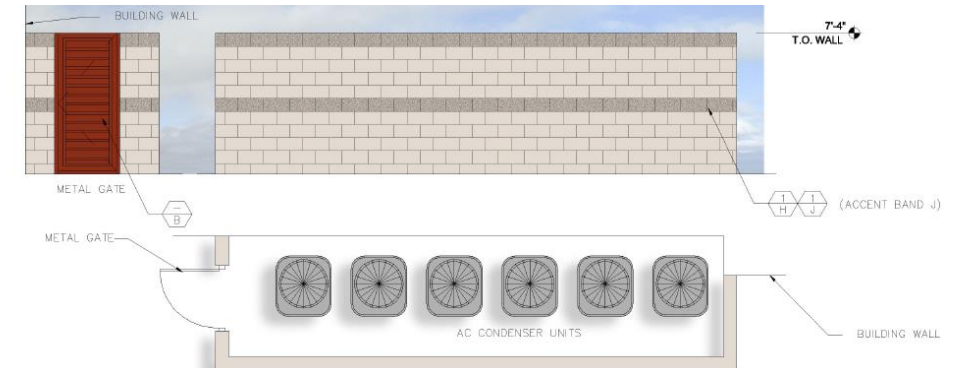
6 PARKING SCREEN WALL
REFUSE SCALE: 1/4"=1'-0"



5 ROLLING GATE
GATE SCALE: 1/4"=1'-0"



4 WI PERIMETER FENCE
GATE SCALE: 1/4"=1'-0"



7 AC SCREEN WALL AND GATE
SW SCALE: 1/4"=1'-0"

Color and Material Board



**GALVALUME
McELROY METAL**



**COOL TERRA-COTTA
McELROY METAL**



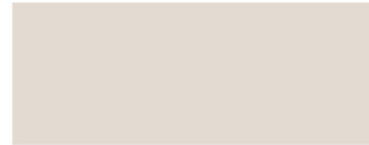
**COOL REGAL BLUE
McELROY METAL**



**ROYAL BLUE
JANUS INTERNATIONAL**



**SLATE GRAY
McELROY METAL**



**WHITE LIE MQ3-55
BEHR PAINTS**



**LILAC FIELDS HDC-AC-26-A
BEHR PAINTS**

Light Fixtures



AL SERIES

Dark Sky / Forward Throw All-Pack

The AL series is a configurable area light with multiple applications. It can be configured as a dark-sky compliant light, forward-throw light, or pole-mounted light.



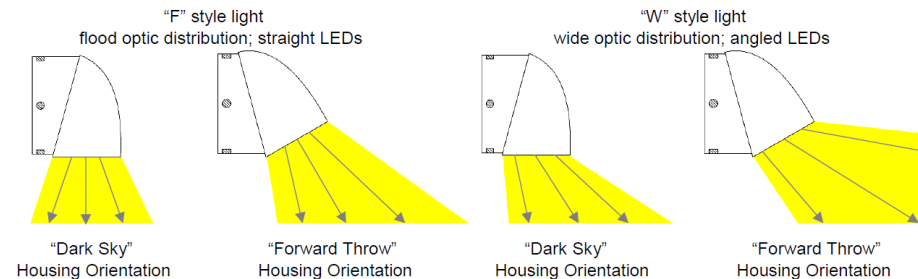
Applications

- ❖ Wall Pack Lighting
- ❖ Flood Lighting
- ❖ Area Lighting
- ❖ Sign Lighting
- ❖ Several mounting options
- ❖ Numerous optic distributions

Ordering Information

AL	[X]	[Y]	[Z]
Reversible "All Pack" Product Series	Approximate Metal Halide Replacement	Optics – Orientation of LEDs (AL-100-, AL-250-, AL-320-)	Durable Powder Coat Finish *
AL	<p>[100] = replaces 100W metal halide fixture</p> <p>[250] = replaces 250W metal halide fixture</p> <p>[320] = replaces 320W metal halide fixture</p> <p>[400] = replaces 400W metal halide fixture</p> <p>*** AL-400 AVAILABLE IN W OPTICS ONLY ***</p>	<p>[W] = wide distribution; LEDs angled to throw light forward</p> <p>*** AL-400 AVAILABLE IN W OPTICS ONLY ***</p> <p>[F] = flood light (direct) distribution; LEDs angled to direct light straight ahead</p> <p>(Optics are ordered; orientation is chosen when installing – see diagram on next page.)</p>	<p>[BRZ] = bronze</p> <p>[WHT] = white</p> <p>* Contact Jarvis Lighting for additional color options.</p>

Optics & Mounting Orientation Diagram

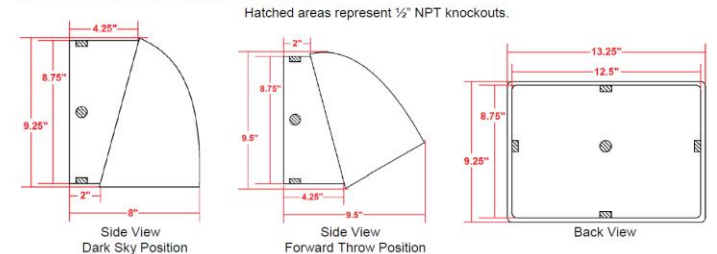


AL SERIES

Electrical & Light Output Specifications

Model Number	AL-100	AL-250	AL-320	AL-400
High Efficiency Diodes	1	2	3	4
Input Power	28.84 W	59.95 W	76.78 W	104.88 W
Lumens	3,182 lm	6,354 lm	8,403 lm	11,780 lm
Typical Metal Halide Replacement	100W	250W	320W	400W
Electrical Input	120-277V, 50/60Hz Power supply automatically adjusts to line voltage within range			
Dimming	0-10V Dimming Compatible			
Color Temperature	5000K, Daylight White			
Color Accuracy (CRI)	>70			
Power Factor	>.9			
Lifetime	75,000-100,000 hours			
Warranty	5 years			

Dimensions



Design Guidelines

Section 11-7-3

✓	Roof Articulation
✓	Wall Articulation
✓	Design incorporates multiple material
✓	No more than fifty percent (50%) of the total façade may be covered with one material
✓	Proposing a complementary design to the Power 42 industrial park

Summary

Findings

Staff welcomes any feedback



DESIGN REVIEW BOARD

May 11, 2021