



# PLANNING & ZONING BOARD

April 28, 2021



**ZON21-00191**



## Request

Rezone from Agricultural (AG) and Light Industrial (LI) to Public/Semi Public (PS).

## Purpose

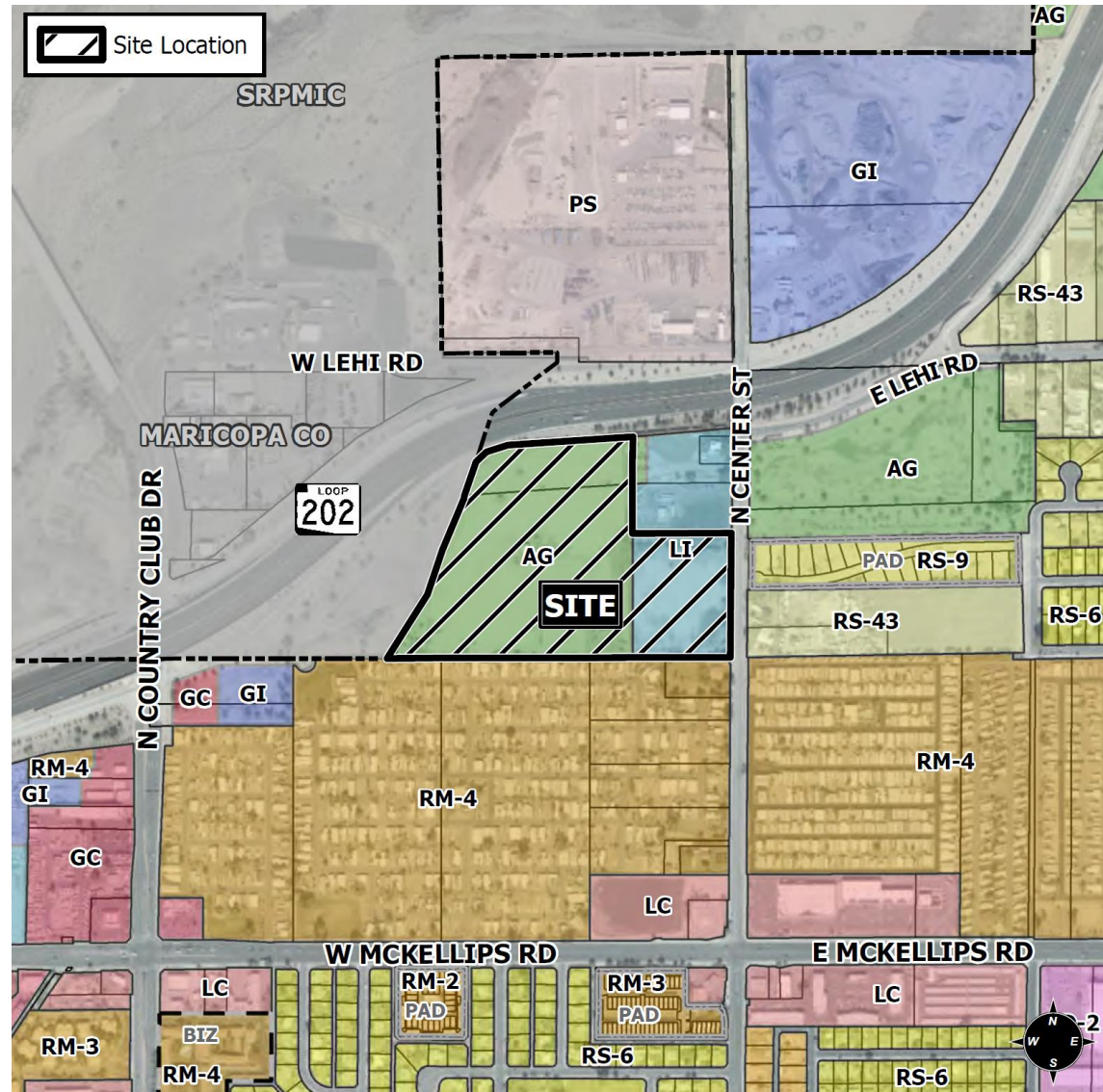
This request will allow for development of a public facility.

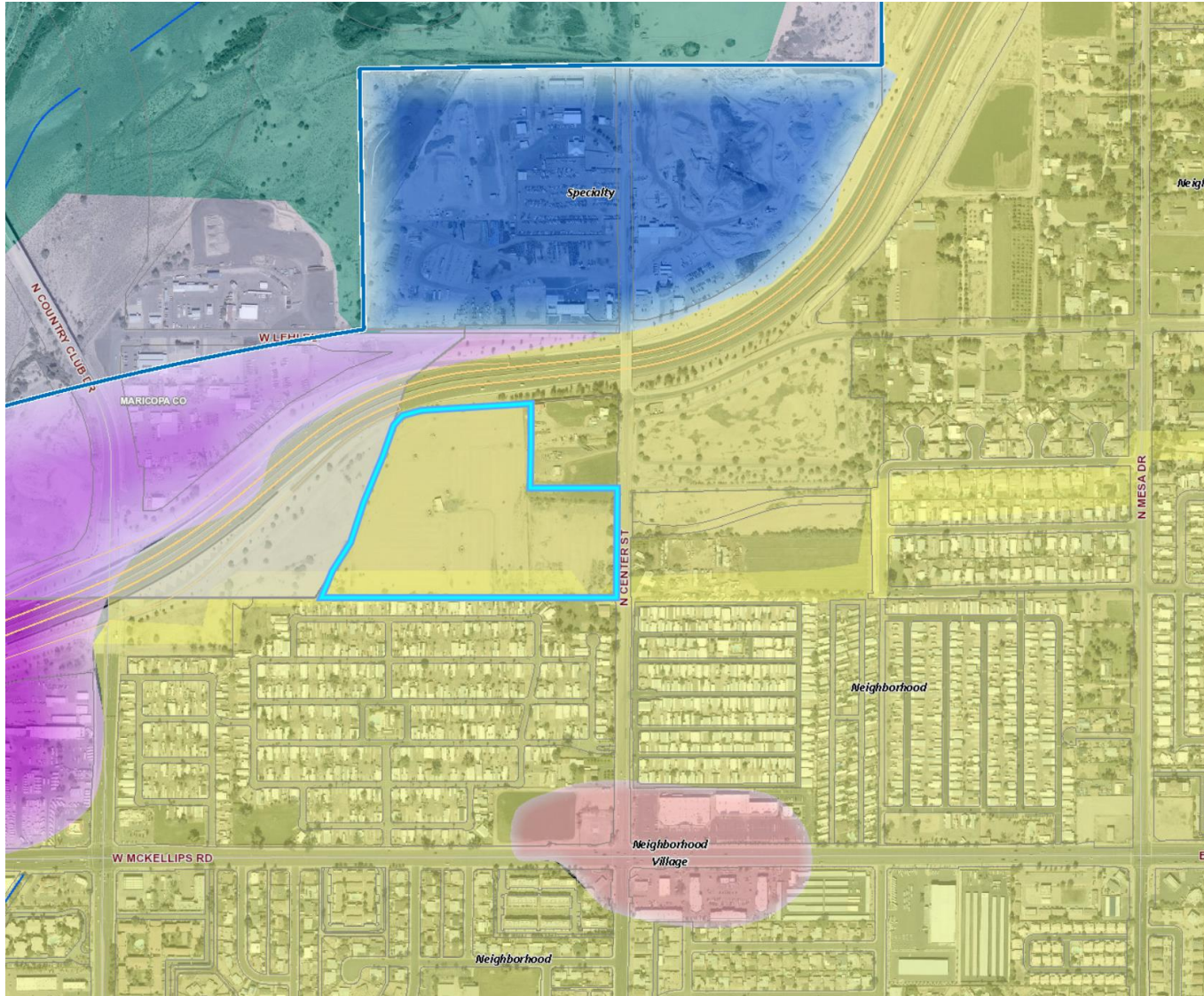


# Location

2200 block of North  
Center Street (west side)

- North of McKellips Road
- East of Country Club Drive





# General Plan

## Neighborhood

- Safe places to live
- Primarily single residence
- Secondary supportive uses include schools, parks, etc.



# Zoning

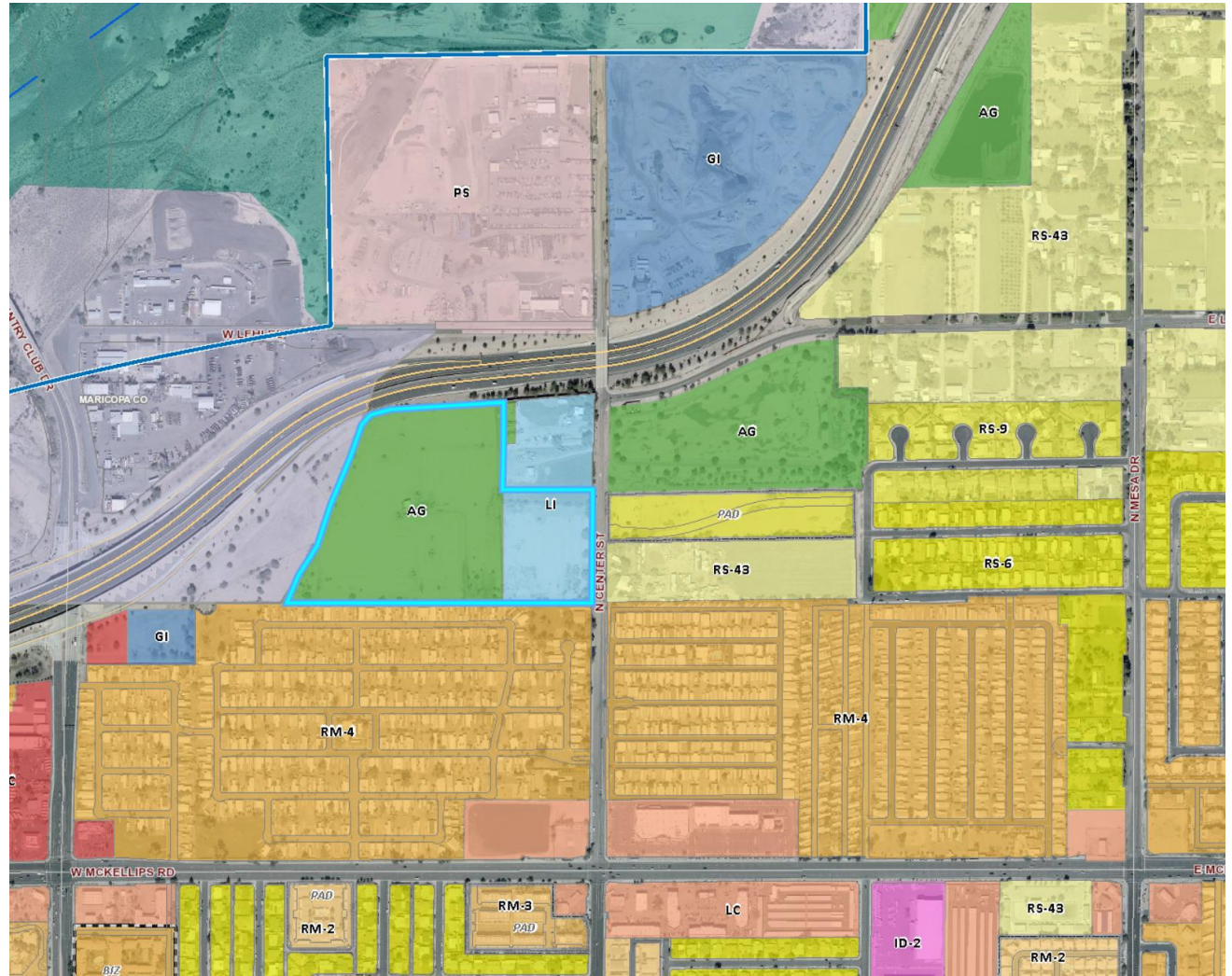
Existing :

Agricultural (AG)

Light Industrial (LI)

Request:

Public / Semi-Public (PS)



# Street View

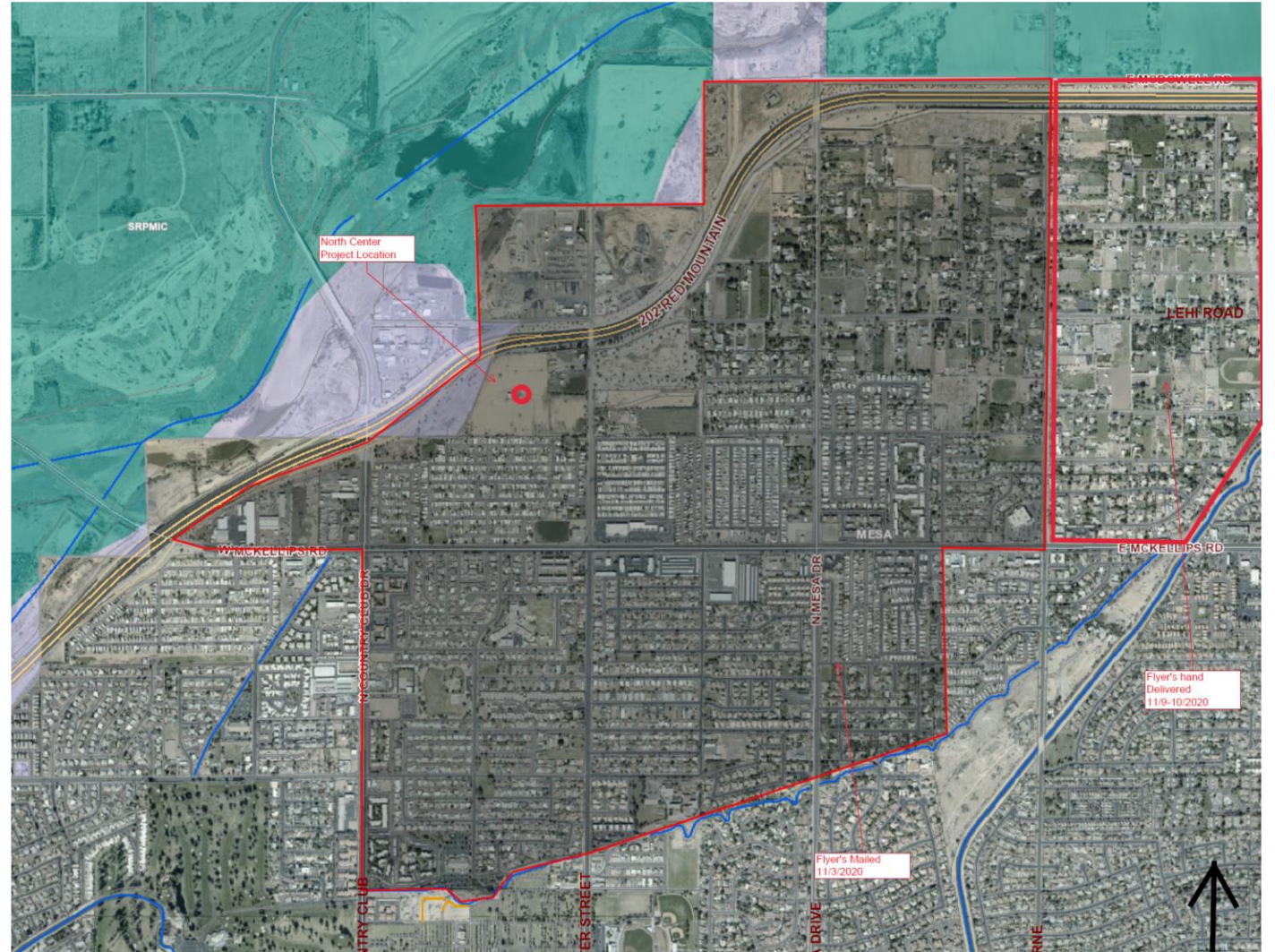


Looking west from Center Street



# Citizen Participation

- Surrounding properties outlined on map
- HOA's
- Registered Neighborhoods
- Various neighborhood meetings and focus groups
- 2018 General Bond Project





# Summary

## Findings

- ✓ Complies with the 2040 Mesa General Plan
- ✓ Meets the purpose of the PS zoning district outlined in Section 11-10-1

## Staff Recommendation

Approval with Conditions



# PLANNING & ZONING BOARD

April 28, 2021