

## CITY OF MESA - LANDSCAPE CALCULATIONS

REQUIRED	PROVIDED
STREET FRONTAGE LANDSCAPE (POWER ROAD) 625 LF DIVIDED BY 1 TREE, 6 SHRUBS PER 25 LF	33 TREES, 198 SHRUBS 6-36" BOX 17-24" BOX 8-15 GAL.
LANDSCAPE ADJACENT TO NORTH PERIMETER 1361 LF DIVIDED BY 3 TREE, 20 SHRUBS PER 100 LF	41 TREES, 272 SHRUBS 0-24" BOX 41-15 GAL.
LANDSCAPE ADJACENT TO EAST PERIMETER 1260 LF DIVIDED BY 3 TREE, 20 SHRUBS PER 100 LF	36 TREES, 252 SHRUBS 0-24" BOX 38-15 GAL.
LANDSCAPE ADJACENT TO SOUTH PERIMETER 1420 LF DIVIDED BY 3 TREE, 20 SHRUBS PER 100 LF	43 TREES, 284 SHRUBS 0-24" BOX 43-15 GAL.
LANDSCAPE PER PARKING SPACES 546 PARKING SPACES DIVIDED BY ONE TREE, 3 SHRUBS PER 8 SPACES	69 TREES, 207 SHRUBS 7-36" BOX 62-24" BOX
FOUNDATION LANDSCAPING FOR BUILDING 1 > 360 LF DIVIDED BY 1 TREE PER 50 LF	8 TREES 1-36" BOX 7-24" BOX
FOUNDATION LANDSCAPING FOR BUILDING 2 > 1290 LF DIVIDED BY 1 TREE PER 50 LF	26 TREES 3-36" BOX 23-24" BOX
FOUNDATION LANDSCAPING FOR BUILDING 3 > 790 LF DIVIDED BY 1 TREE PER 50 LF	16 TREES 2-36" BOX 14-24" BOX
FOUNDATION LANDSCAPING FOR BUILDING 4 > 1070 LF DIVIDED BY 1 TREE PER 50 LF	22 TREES 2-36" BOX 20-24" BOX
TOTAL NUMBER OF 24" BOX	143 TREES
TOTAL NUMBER OF 36" BOX (OR LARGER) TREES	23 TREES
TOTAL NUMBER OF 5 GALLON SHRUBS	1,277 SHRUBS
ON-SITE LANDSCAPE COVERAGE (50% MINIMUM REQUIRED)	50% / ±135,700 SF

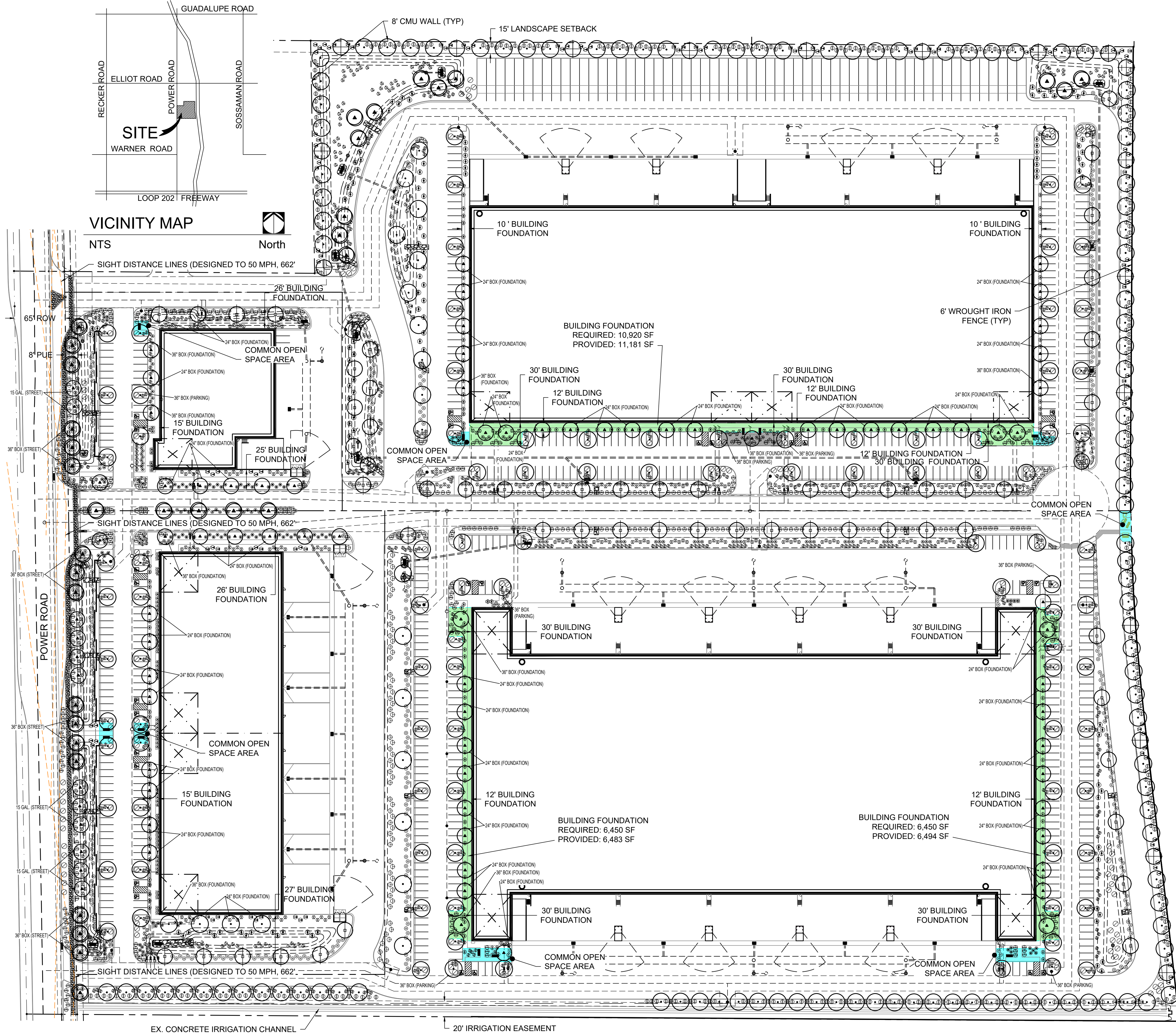
COMMON AREA OPEN SPACE	REQUIRED	PROVIDED
BUILDING 1, 1% OF 25,618 S.F.	256 S.F.	314 S.F.
BUILDING 2, 1% OF 203,840 S.F.	2,038 S.F.	2,152 S.F.
BUILDING 3, 1% OF 74,880 S.F.	749 S.F.	936 S.F.
BUILDING 4, 1% OF 238,160 S.F.	2,382 S.F.	2,767 S.F.
TOTAL, 1% OF 542,498 S.F.	5,425 S.F.	6,169 S.F.

## PLANT SCHEDULE

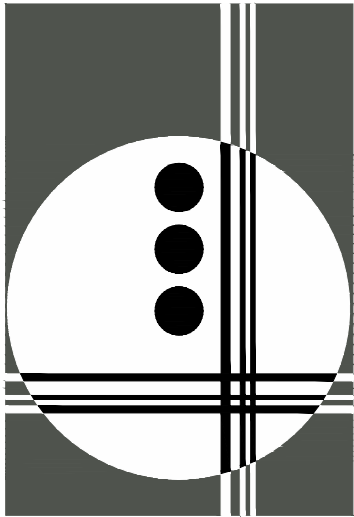
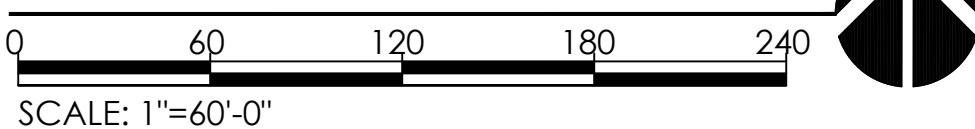
SYMBOL	BOTANICAL/COMMON NAME	SIZE	QTY.
TREES			
	PARKINSONIA FLORIDUM BLUE PALO VERDE	15 GAL.	18
	PROSOPIS ALBA 'THORNLESS' THORNLESS ARGENTINE MESQUITE	15 GAL. 24" BOX 36" BOX	123 93 8
	PARKINSONIA HYBRID 'DESERT MUSEUM' DESERT MUSEUM PALO VERDE	15 GAL. 24" BOX 36" BOX	6 74 7
	DALBERGIA SISSOO SISSOO TREE	1" / 15 GAL.	59
	EBENOPSIS EBANO TEXAS EBONY	24" BOX 36" BOX	26 8
SHRUBS			
	CORDIA PARVIFLORA LITTLE LEAF CORDIA	5 GAL.	111
	CAESALPINIA PULCHERRIMA RED BIRD OF PARADISE	5 GAL.	147
	CASSIA NEMOPHILA DESERT CASSIA	1 GAL.	84
	EREMOPHILA HYDROPHANA 'BLUE BELLS' BLUE BELLS	5 GAL.	308
	LEUCOPHYLLUM FRUTESCENS 'GREEN CLOUD' GREEN CLOUD SAGE	5 GAL.	370
	ACACIA REDOLENS 'DESERT CARPET' N.C.N.	1 GAL.	175
	EREMOPHILA MACULATA 'VALENTINE' VALENTINE EMU	5 GAL.	184
	LEUCOPHYLLUM LANGMANIAE 'RIO BRAVO' RIO BRAVO SAGE	5 GAL.	361
	LEUCOPHYLLUM ZYGOPHYLLUM 'CIMARRON' CIMARRON SAGE	5 GAL.	131
	RUELLIA PENINSULARIS BAJA RUELLIA	5 GAL.	337
ACCENTS			
	HESPERALOE PARVIFLORA RED YUCCA	5 GAL.	634
	MUHLENBERGIA CAPILLARIS 'REGAL MIST' REGAL MIST DEER GRASS	1 GAL.	98
GROUND COVER			
	EREMOPHILA GLABRA 'MINGEW GOLD' OUTBACK SUNRISE EMU	1 GAL.	472
	DECOMPOSED GRANITE "EXPRESS GOLD"	3/4" SCREENED	

## NOTES:

- 1) TREE HEIGHTS AND CALIPERS WILL COMPLY WITH "ARIZONA NURSERY ASSOCIATION SPECIFICATIONS" FOR THAT TYPE AND SIZE OF TREE
- 2) LANDSCAPE TO BE WATERED BY AN UNDERGROUND AUTOMATIC IRRIGATION SYSTEM.



## LANDSCAPE PLAN



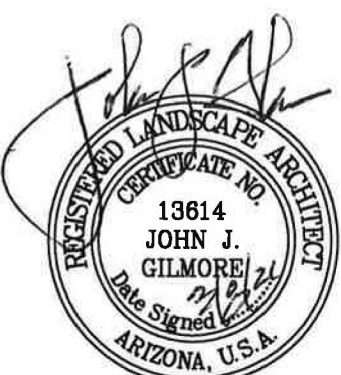
**GILMORE**  
PLANNING & LANDSCAPE ARCHITECTURE

2211 N. 7th Street  
Phoenix, Az 85006  
T 602.266.5622  
F 602.266.5707  
www.getgilmore.com

PLANNING  
LANDSCAPE ARCHITECTURE

**POWER 42 INDUSTRIAL PARK**  
POWER ROAD, SOUTH OF ELLIOT ROAD  
MESA, AZ 85212  
PREPARED FOR:

JOB NO. 20--  
DRAWN BY. TCB  
APPROVED BY. JJG  
DATE. 3.8.21



## REVISIONS.

- 1.
- 2.
- 3.
- 4.

PRELIMINARY  
LANDSCAPE PLAN

SHEET

**L1.0**  
1 OF 1