



# Liquor License Map

City of Mesa Tax & Licensing

Requesting Approval:



**MR BREWS TAPHOUSE MESA**  
1113 S SIGNAL BUTTE RD 106

License Type:

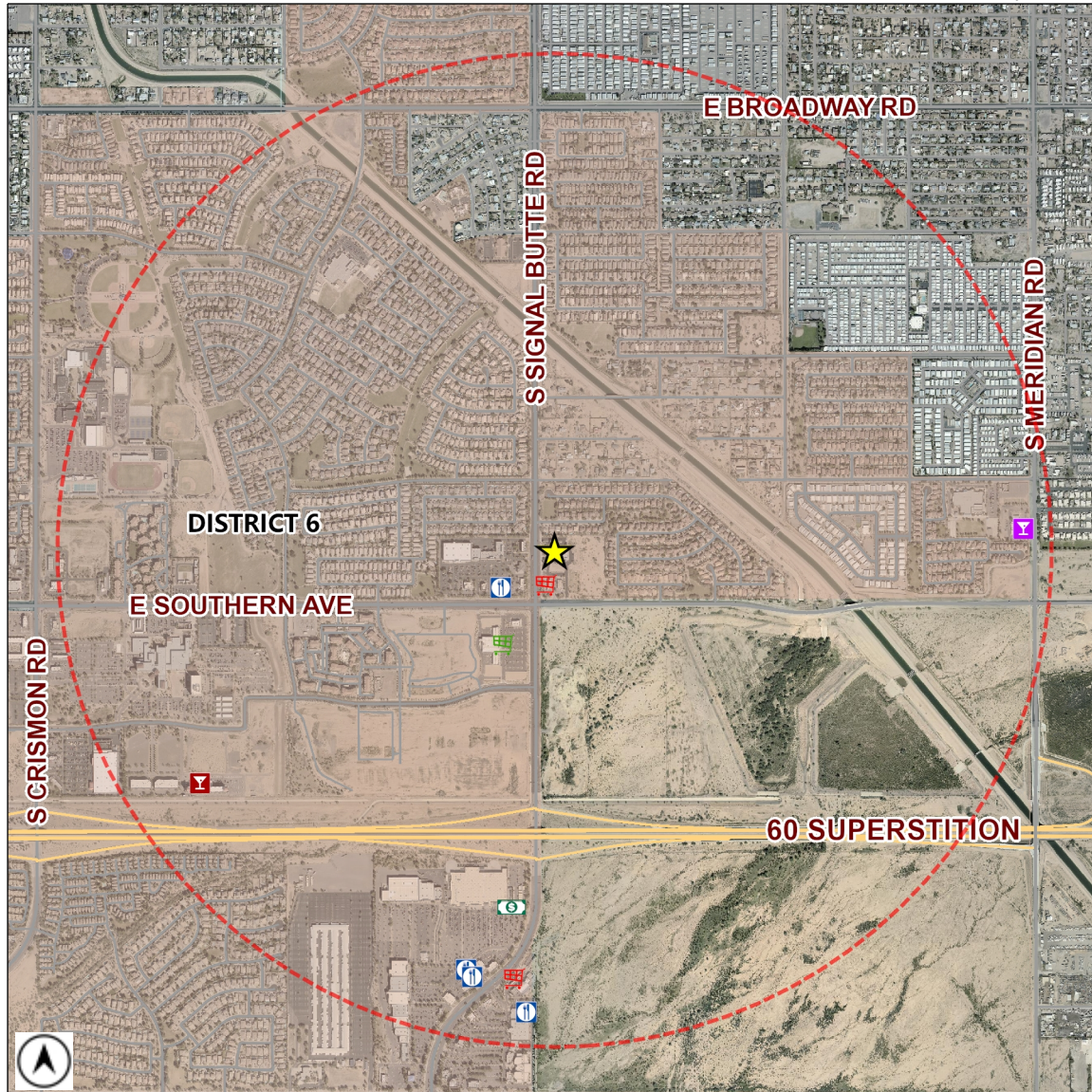
**RESTAURANT (PEND)**

License Number:

**LICA21-03010**

Estimated Population (1 Mile): **9780**

Source: MAG ACS 2013-2017 5 year data



	BAR	0		CLUB	1		HOTEL-MOTEL	0		MICRO-BREWERY	0
	BAR (PEND)	0		CLUB (PEND)	0		HOTEL-MOTEL (PEND)	0		MICRO-BREWERY (PEND)	0
	BEER / WINE BAR	1		CONVEYANCE	0		IN-STATE PRODUCER	0		RESTAURANT	4
	BEER / WINE BAR (PEND)	0		CONVEYANCE (PEND)	0		IN-STATE PRODUCER (PEND)	0		RESTAURANT (PEND)	0
	BEER / WINE STORE	2		DOMESTIC FARM WINERY	0		LIQUOR STORE	1		WHOLESALE	0
	BEER / WINE STORE (PEND)	0		DOMESTIC FARM WINERY (PEND)	0		LIQUOR STORE (PEND)	0		WHOLESALE (PEND)	0
	BEER / WINE STORE / SAMPLING	1		GOVERNMENT	0		LIQUOR STORE / SAMPLING	0			
	BEER / WINE STORE / SAMPLING (PEND)	0		GOVERNMENT (PEND)	0		LIQUOR STORE / SAMPLING (PEND)	0		1 MILE BUFFER	

Total Count: 10 liquor licenses