



**LightingDirect.com™**  
A Build.com Network Site

What are you shopping for?

Search



**Cart - 0  
items**

**COVID-19 Update:** Customer service wait times and delivery schedules may be impacted.



Bathroom Lights



Chandeliers



Pendant Lights



Wall Lights



Ceiling Lights



Ceiling Fans



Lamps



Outdoor Lighting

**Special Financing Available\*\***

**Free Ground Shipping\***

**No Restocking Fees**

**Are you a PRO? Enroll Now!**




> Brands > Sea Gull Collection > Outdoor Wall Sconces > Generation Lighting 8831702

Item # bci4024530




## GENERATION LIGHTING



neration Lighting  
ohl 2 Light 19" Tall Outdoor Wall Sconce  
odel: **8831702-10**  
n the Sea Gull Collection  
[ite a Review](#)

 **Sea Gull Lighting Sale! Save 15%**  
Save 15% on Sea Gull Lighting Orders. No coupon necessary, prices reduced!  
Offer Ends 03-31-2021

141.07  
nish: Bronze

	<b>Black</b> <b>\$141.07</b> Special Order
<div>Select</div>	
	<b>Bronze</b> <b>\$141.07</b> 295 In Stock
<div>Select</div>	
	<b>Painted Brushed Nickel</b> <b>\$141.07</b> Special Order
<div>Select</div>	

re Shipping!  
aves the Warehouse in 1 to 2 business days (Change Zip)

15 In Stock

-

1

+

Add to Cart

☐ Compare

Buy Now, Special Financing Available!

On purchases of \$500 for 6 months, or \$1,000 for 12 months made with your Build.com Credit Card.<sup>1</sup>

[Click Here for Details](#)

Customers Also Viewed



Generation Lighting 8631702

\$127.47



Elegant Lighting LDOD4005

\$115.20



Generation Lighting 87317

\$105.37

- Overview
- Reviews
- Product Q&A

Product Overview

Features:

- Constructed from aluminum
- Includes a metal shade
- Requires (2) 65 watt maximum Medium (E26) bulbs
- Dimmable with compatible dimming bulbs
- Intended for outdoor use
- Made in China

Manufacturer Resources

[Installation Guide](#)

Dimensions and Measurements

Extension ? 7.75 in.

- ETL listed for installation in wet locations
- Meets California Title 24 energy standards

#### Dimensions:

- Height: 18-1/2"
- Width: 5"
- Extension: 7-3/4"
- Product Weight: 5.5lbs
- Wire Length: 6-1/2"
- Shade Height: 1/8"
- Shade Width: 4-7/16"

#### Electrical Specifications:

- Max Wattage: 130 watts
- Number of Bulbs: 2
- Max Watts Per Bulb: 65 watts
- Bulb Base: Medium (E26)
- Voltage: 120
- Bulbs Included: No

#### Additional Generation Lighting Links

- [View the Manufacturer Warranty](#)
- [Browse All Generation Lighting Products](#)
- [Generation Lighting Sea Gull Collection](#)

This product is listed under the following manufacturer number(s):

- [Generation Lighting 8831702-12](#)  
Black
- [Generation Lighting 8831702-10](#)  
Bronze
- [Generation Lighting 8831702-753](#)  
Painted Brushed Nickel

Height ? 18.5 in.

Nominal Height ? 19 in.

Product Weight ? 5.5 lbs.

Shade Height ? 0.125 in.

Shade Width ? 4.4375 in.

Width ? 5 in.

Wire Length ? 6.5 in.

## Included Components

Bulb Included ? No

## Characteristics and Features

Bulb Base ? Medium (E26)

Cord Color ? Black, White

Dimmable ? Yes

Full Backplate ? No

Genre ? Contemporary

Light Direction ? Up / Down Lighting

Material ? Aluminum

Number of ? 2

[View More](#)

### Related Generation Lighting Categories

- [Sea Gull Lighting New Product Releases](#)
- [Sea Gull Lighting Shop All](#)
- [Sea Gull Lighting Bathroom Lighting](#)
- [Sea Gull Lighting Chandeliers](#)
- [Sea Gull Lighting Ceiling Lights](#)

Subscribe now for coupons, exclusive deals, and design inspiration! Enter Email Address

Sign Me Up

Privacy Policy

#### My Account

My Account  
Login/Register  
My Cart  
My Order History

#### Customer Care

Contact Us  
Returns  
Shipping Policy

#### Helpful Links

Special Pricing  
Nonstock Items

#### About

About Us  
Careers  
Site Map

Security and Privacy

Terms

Interest-Based Ads

Don't Sell My Info

CA Privacy Rights

Find Us On:

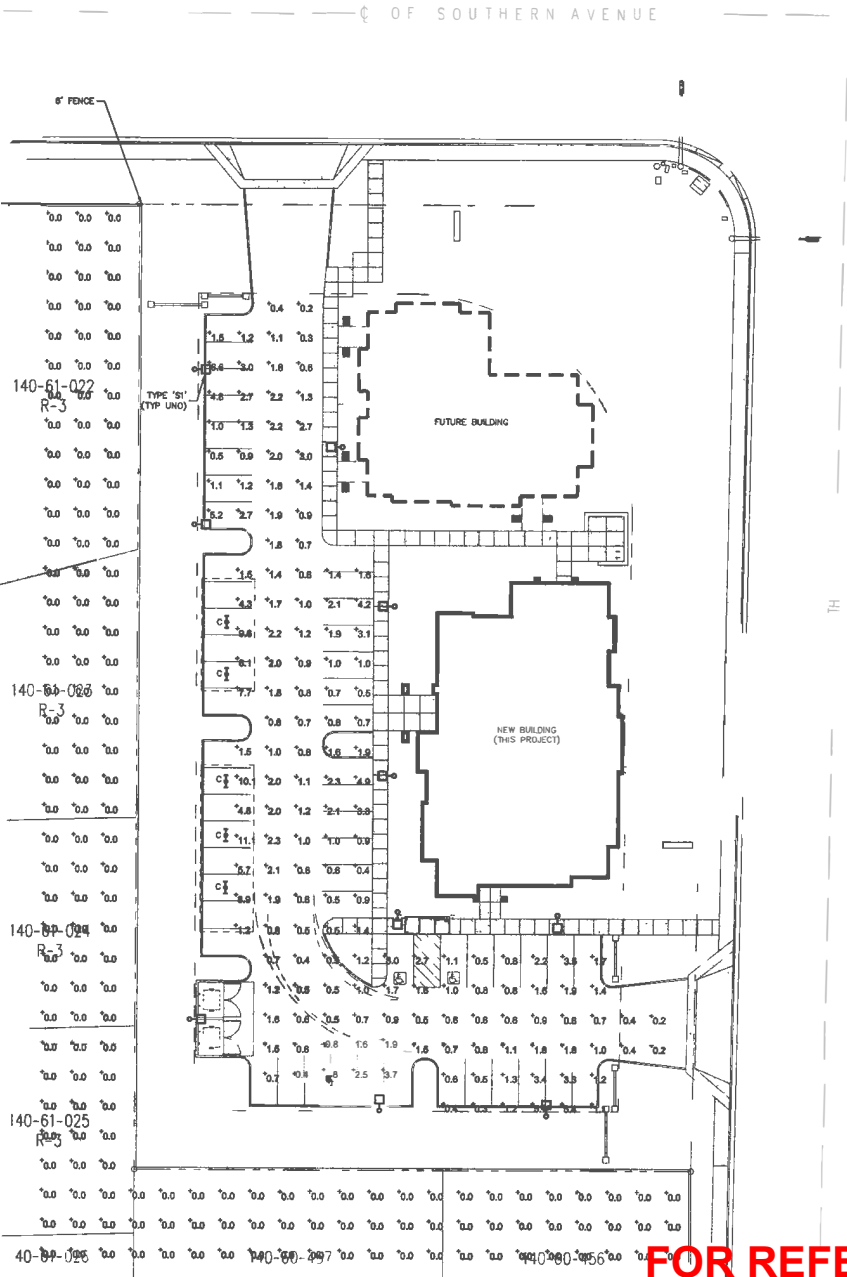
#### Shop With Confidence



#### Payments Accepted

FOR REFERENCE ONLY

STATISTICS					
GRID NAME	AVERAGE	MIN	MAX	MAX/MIN	AVG/MIN
PARKING LOT	1.9	0.5	16.1	32.4:1	6.0:1
RESIDENTIAL YARDS	0.0	0.0	0.0	N/A	N/A



FOR REFERENCE ONLY - Previously permitted and constructed under permit BLD2005-02465.

GENERAL NOTES  
A. REFER TO SHEET E102 FOR LUMINAIRE SCHEDULE.

PROJECT NO.  
2004-22

FAMILY FIRST PHYSICIANS

CITY COMMENTS  
05/13/05

REVISIONS/SUBMISSIONS  
DATE

FAMILY FIRST PHYSICIANS  
SWC 24TH STREET AND SOUTHERN AVE, MESA, AZ 85204

ROWLEY ENGINEERING  
2882 E. CONCHO AVE.  
MESA, AZ 85204  
PHONE: (480) 850-2303  
PROJECT NO. DREM0002.00

SITE PHOTOMETRIC PLAN

DESIGNED BY: WOR  
DRAWN BY: WOR  
CHECKED BY: --  
DATE: --  
DATA FILE: --

PROJECT NO. 2004-22  
AS NOTED  
DRAWING NO. PH101