



DESIGN REVIEW BOARD

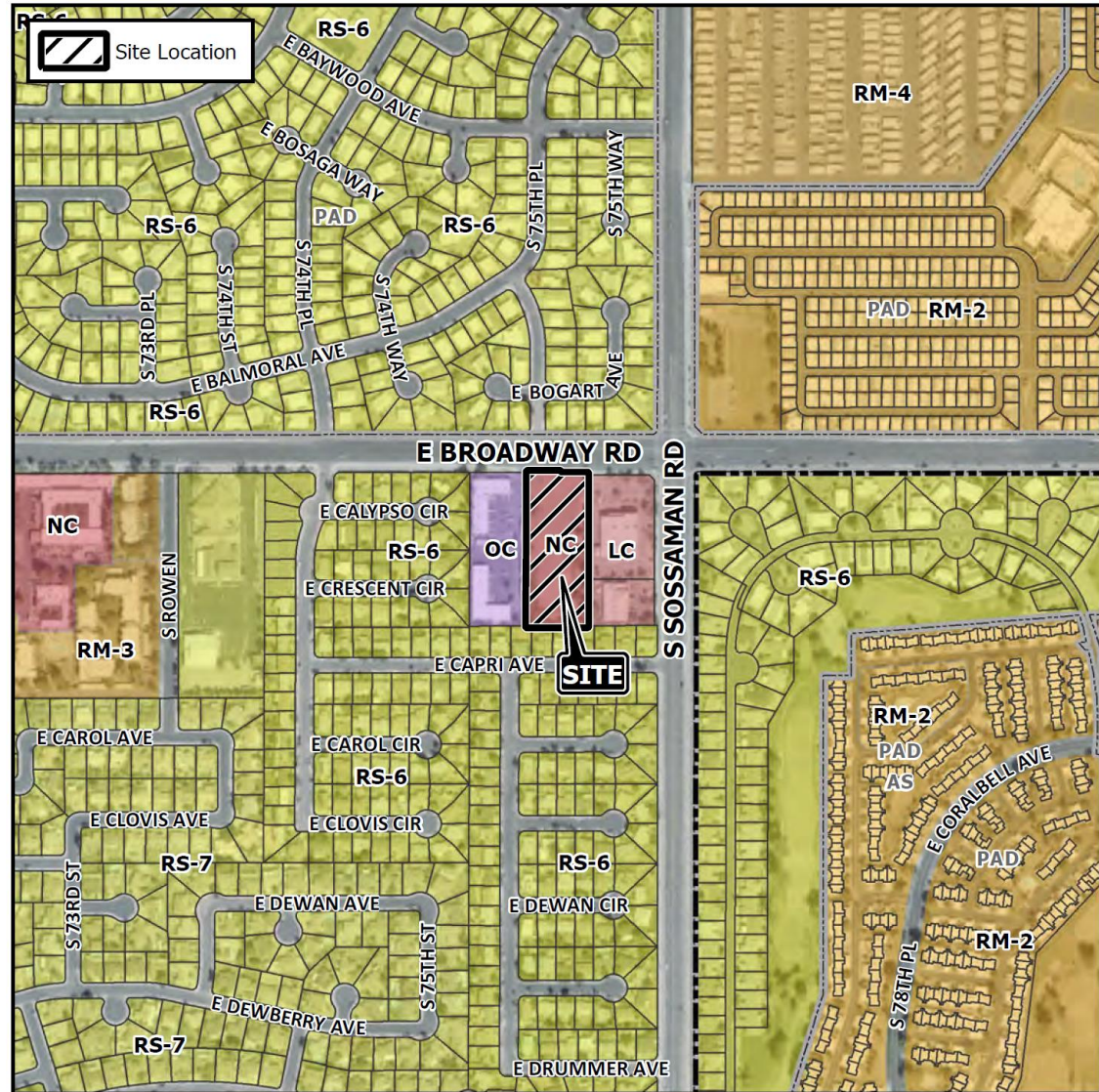
April 13, 2021

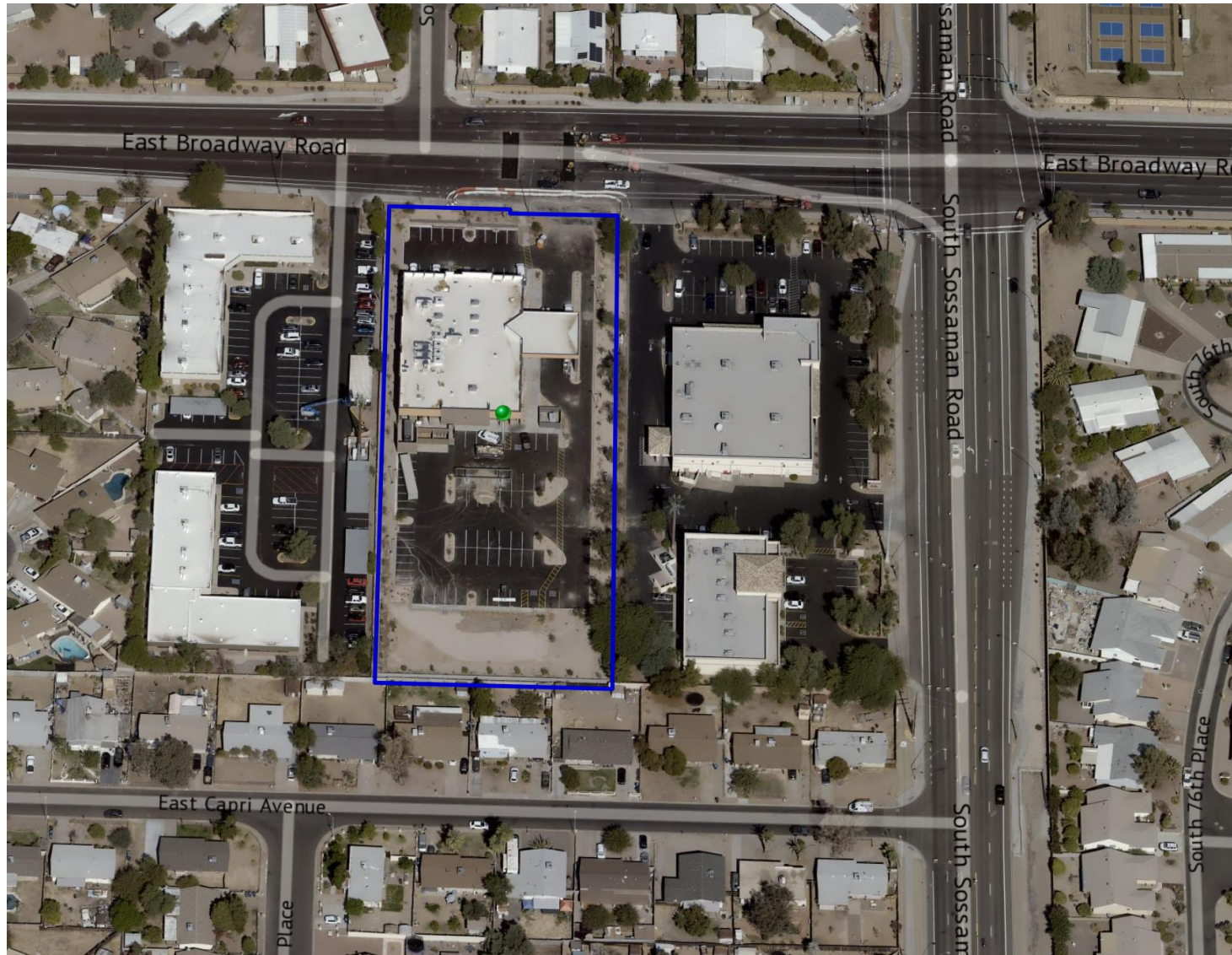


DRB21-00182

Location

- South of Broadway Road
- West of Sossaman Road





Request

- Design Review

Purpose

- Proposed medical offices

Site Photo



Looking south towards the site from Broadway Road
The front office is already constructed

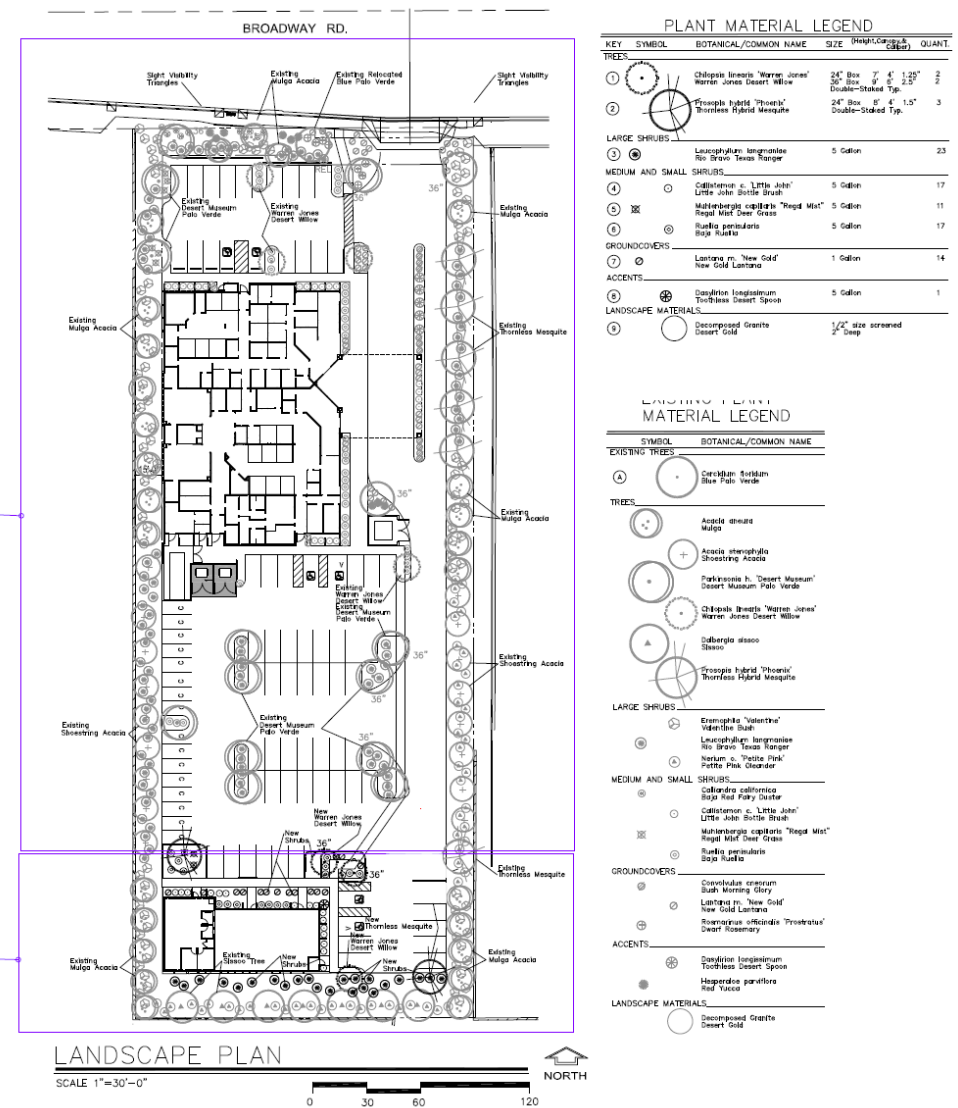
- Phase II
- Building B
- Medical offices
- Within existing medical facility
- Access from Broadway Road to the north



Landscape Plan

PHASE 1
CONSTRUCTION COMPLETE
SEE PMT18-11066D

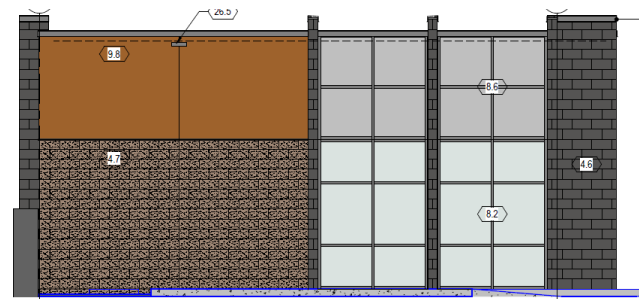
PHASE 2
CURRENT PROJECT
DRB21-00182



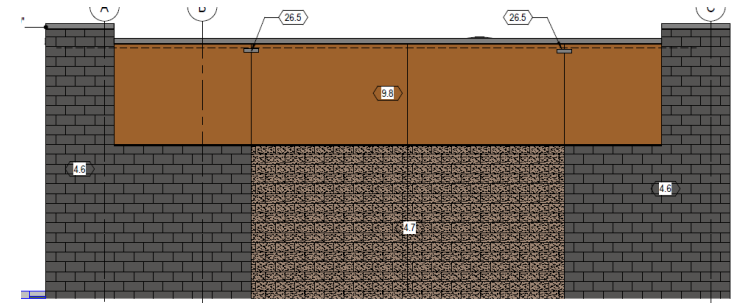
Elevations



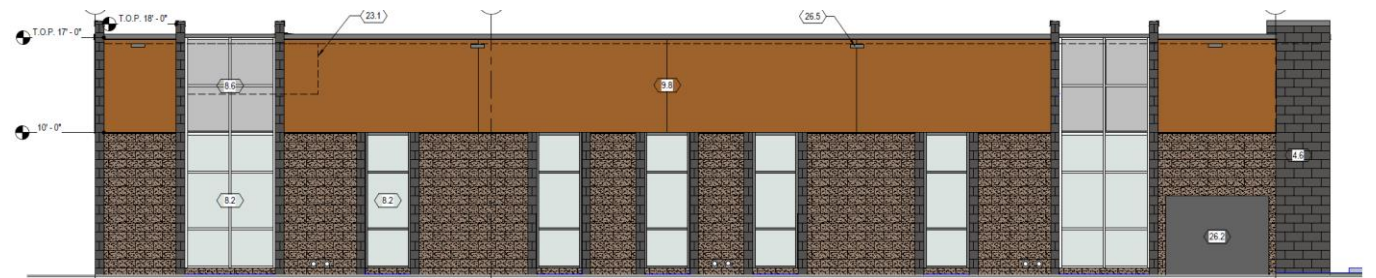
North Elevation



East Elevation



West Elevation



South Elevation

Rendering



Color and Material Board



Lighting



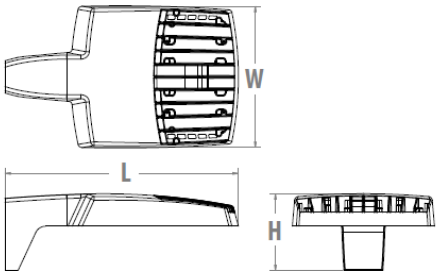
RSX1 LED Area Luminaire



EXT BLDG LTG

Specifications

EPA (ft²@0°):	0.57 ft² (0.05 m²)
Length:	21.8" (55.4 cm) (SPA mount)
Width:	13.3" (33.8 cm)
Height:	3.0" (7.6 cm) Main Body 7.2" (18.4 cm) Arm
Weight (max):	25.0 lbs (11.3 kg)



3000k to match
Building A

Ordering Information				EXAMPLE: RSX1 LED P4 40K R3 MVOLT SPA DDBXD	
RSX1 LED					
Series	Performance Package	Color Temperature	Distribution	Voltage	Mounting
RSX1 LED	P1	30K 3000K	R3 Type 3 Wide	MVOLT (120V-277V) ¹	SPA Square pole mounting (Min. 3.0" SQ for 1 at 90°, Min. 3.5" SQ for 2, 3, 4 at 90°)
	P2	40K 4000K	R4 Type 4 Wide	HVOLT (347V-480V) ²	RPA Round pole mounting (3.2" min pole dia. for 1,2,3 or 4 at 90°)
	P3	50K 5000K	R5 Type 5 Wide	(use specific voltage for options as noted)	MA Mast arm adaptor (fits 2-3/8" OD horizontal tenon)
	P4		R5S Type 5 Short AFR Automotive Front Row	120 ³ 277 ³	

Catalog Number	
Notes	
Type	

Hit the Tab key or mouse over the page to see all interactive elements.

Introduction

The new RSX LED Area family delivers maximum value by providing significant energy savings, long life and outstanding photometric performance at an affordable price. The RSX1 delivers 7,000 to 17,000 lumens allowing it to replace 70W to 400W HID luminaires.

The RSX features an integral universal mounting mechanism that allows the luminaire to be mounted on most existing drill hole patterns. This "no-drill" solution provides significant labor savings. An easy-access door on the bottom of mounting arm allows for wiring without opening the electrical compartment. A mast arm adaptor and an adjustable integral slip-fitter are also available.

Design Guidelines

Section 11-6-3

- | | |
|---|--|
| ✓ | Design incorporates multiple materials |
| ✓ | Wall articulation |
| ✓ | Roof Articulation |
| ✓ | No more than fifty percent (50%) of the total façade may be covered with one (1) single material |

Summary

Findings

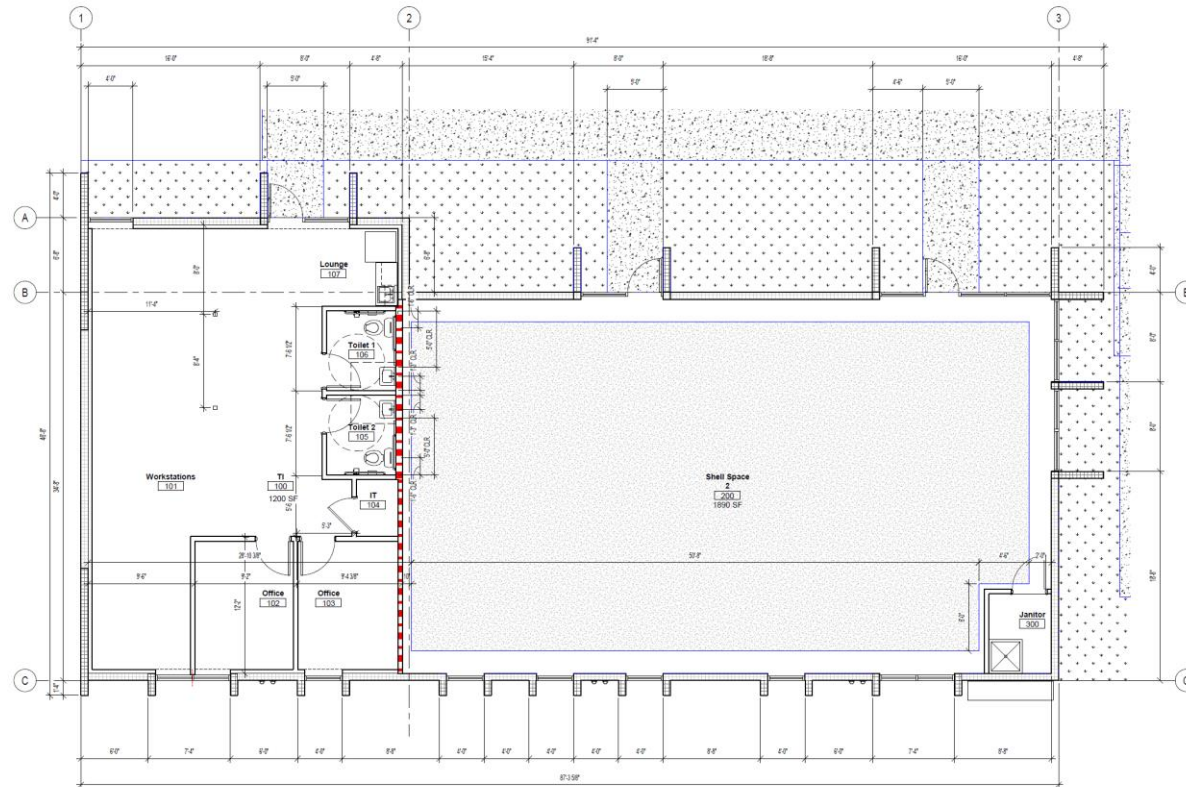
- Staff welcomes any feedback



DESIGN REVIEW BOARD

April 13, 2021

Floor Plan



floor plan
1/16" = 1'-0"