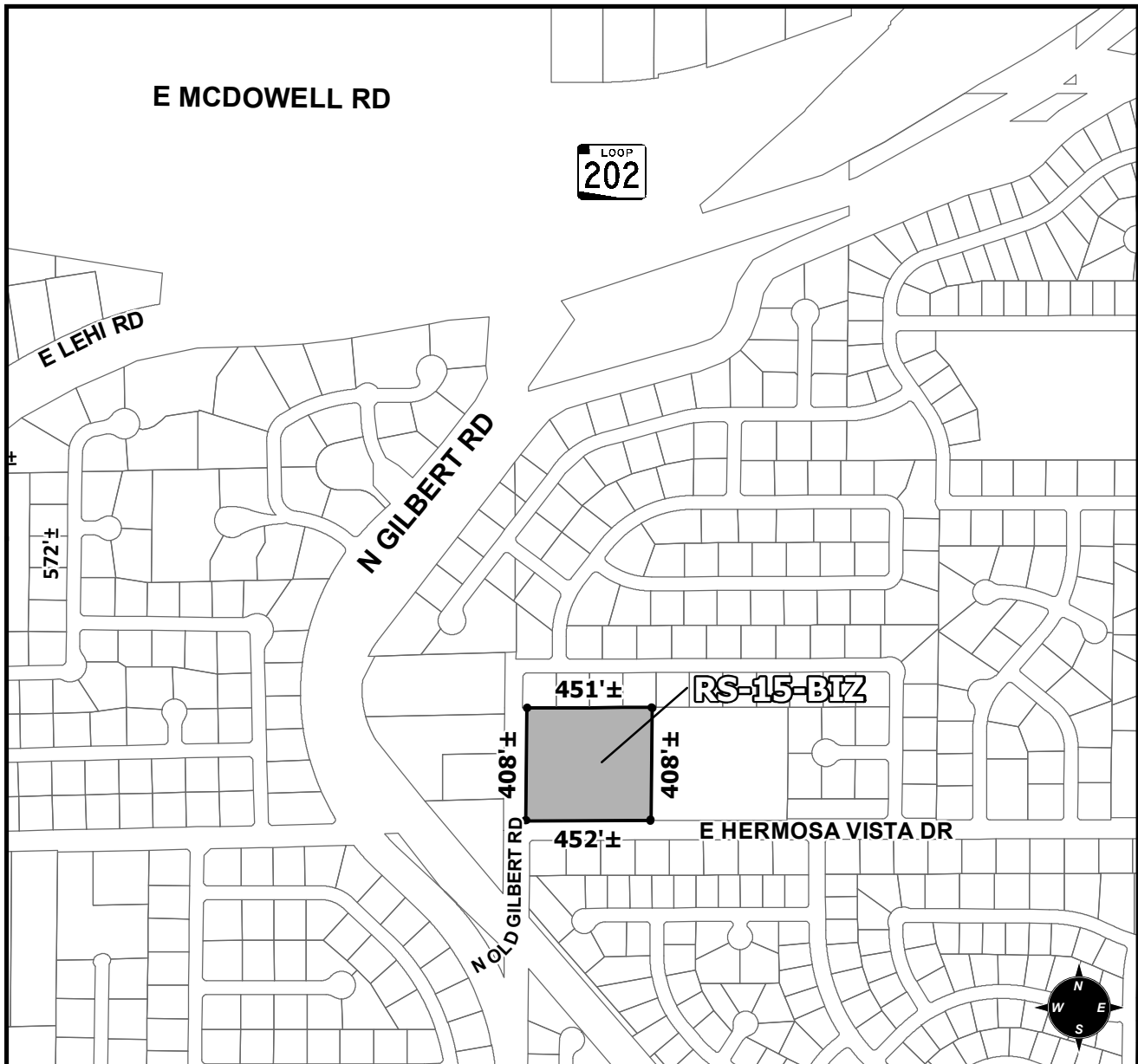




OFFICIAL SUPPLEMENTARY ZONING MAP AMENDING THE CITY OF MESA ZONING MAP



CASE: ZON20-00877

ACREAGE: 4.55±

REQUEST: REZONING FROM RS-35 TO RS-15-BIZ.

ORDINANCE: _____

Please be advised that the attached zoning changes were approved by the Mesa City Council on _____, 2021 by Ordinance # _____. If you have any questions concerning these changes, contact the City of Mesa Planning Division at 480-644-2385.

ATTEST: _____ **DATE:** _____

MAYOR

CITY CLERK