

KEYNOTES

Note: Floor Plan, RCP, Roof Plan, Building Elevations, Building Sections and Wall Sections Sheet  
Keynotes Lists are similar where required. Keynote Lists may not appear on every sheet. Reference a  
Keynote List on another sheet if necessary. Keynotes may not be provided on every sheet, GC to  
verify any inconsistencies with architect.

- 1.0 Sitework - Civil
  - 1.1 Rough/Finish grade, see civil
  - 1.2 Landscape/planter area, see landscape
- 2.0 Sitework - Architectural
  - 2.1 Sidewalk, concrete, light broom finish
- 3.0 Concrete
  - 3.1 Concrete slab 4", over 4" ABC fill, see structural
  - 3.2 Concrete footing/turndown, see structural
  - 3.3 Concrete stem wall, see structural
  - 3.4 Expansion joint backer material
  - 3.5 Control joint
- 4.0 Masonry
  - 4.1 Masonry stem wall, see structural
  - 4.2 12"x12" masonry breeze block, integral color
  - 4.3 Masonry wall, 8"x8"x16", smooth face, stacked bond, integral color (see legend), horizontal and vertical raked mortar joints, see structural
  - 4.4 Masonry wall, 8"x8"x16", split face, stacked bond, integral color (see legend), horizontal and vertical raked mortar joints, see structural
  - 4.5 Solid Masonry 2" cap, integral color (see legend), see structural
  - 4.6 8"x8"x16", masonry breeze block, integral color (see legend), see structural
  - 4.7 Concrete block fence, painted, see structural
  - 4.8 8"x2"x16" masonry veneer to match block masonry
  - 4.9 3" masonry sill
- 5.0 Metals
  - 5.1 Structural steel WFTS beam painted, see structural
  - 5.2 Structural steel WFTS column/post, painted, see structural
  - 5.3 Structural steel channel, painted, see structural
  - 5.4 Structural steel angle, painted, see structural
  - 5.5 Metal infill panel 24 gauge, painted
  - 5.6 Metal fascia, 24 gauge Old Country Millwork, "Copper Penny"
  - 5.7 1/2" channel screed, see details
  - 5.8 Steel shelves, blackened steel, sealed
  - 5.9 Standing seam metal roof system, "Dark Bronze"
  - 5.10 Steel angle 3x3 / welded wire fabric 3x3 landscape screen panel assembly, see details painted, see legend
- 6.0 Wood
  - 6.1 Glulam beam, see structural
  - 6.2 Prefab wood truss, see structural
  - 6.3 Plywood sheathing, see structural
  - 6.4 Wood framing, see structural
  - 6.5 Wood blocking, see structural
  - 6.6 Millwork, see interior elevations/finish schedule
  - 6.7 Distressed wood planks
  - 6.8 Distressed wood fascia trim, stained & sealed
- 7.0 Thermal and Moisture Protection
  - 7.1 Slab on grade at interior spaces to have 15 mil under-slab vapor retarder system
  - 7.2 Weather barrier system continuous at exterior walls and eaves, Tyvek CommercialWrap
  - 7.3 Self adhered flexible flashing system at roof transitions/ eaves, vertical/horizontal material transitions, window/door openings at exterior walls
  - 7.4 Spray Polyurethane foam roofing system w/ elastomeric coat over roof sheathing
  - 7.5 R-38 batt insulation under roof deck minimum
  - 7.6 Spray foam insulation at all exterior masonry walls, Core-Fill 500
  - 7.7 Acoustical sound batt insulation
  - 7.8 Metal flashing, painted to match adjacent material
  - 7.9 4" continuous metal soffit vent at eaves
  - 7.10 R-21 batt wall insulation, minimum
  - 7.11 Scupper/gutter with 6" Downspout, painted, see details
  - 7.12 Parapet metal cap flashing 24 gauge, Old Country Millwork "Copper Penny"
  - 7.13 Waterproofing system, continuous system
  - 7.14 Stucco control joint, verify minimum spacing per manufacturers specs
- 8.0 Doors and Windows
  - 8.1 Insulated aluminum glass storefront window/door system, dark bronze, with 1" insulated glazing, PPG Solarban 60 (2) Solargray, SHGC .25, U-Factor .29
  - 8.2 Gate as scheduled
  - 8.3 Exterior insulated door as scheduled
  - 8.4 Interior door as scheduled
- 9.0 Finishes
  - 9.1 Stucco exterior system, western 1-kote, painted, see legend
  - 9.2 Suspended gypsum board ceiling, see interiors/finish schedule
  - 9.3 Suspended 2X4 acoustical tile ceiling, see interiors/finish schedule
  - 9.4 Suspended 2X4 acoustical tile ceiling, cleanable, see interiors/finish schedule
  - 9.5 5/8" gypsum board unless specifically noted otherwise, see wall types/details
  - 9.6 Backer rod and sealant to match adjacent material
  - 9.7 Countertop, see interiors/finish schedule
  - 9.8 FRP, see interiors/finish schedule
  - 9.9 Tile, see finish schedule
  - 9.10 LVT, see finish schedule
  - 9.11 Quarry Tile, see finish schedule
- 10.0 Specialties
  - 10.1 Prefab roof hatch, assembly 2'-0"x2'-6" with ladder and accessories for complete installation
- 11.0 Equipment
  - 11.1 Kitchen equipment, see food service plans
- 12.0 Mechanical
  - 12.1 Rooftop mechanical equipment, see mechanical
  - 12.2 Ductwork, see mechanical
- 13.0 Plumbing
  - 13.1 Floor drain, see plumbing
- 14.0 Electrical
  - 14.1 Light fixture, see electrical
  - 14.2 Ceiling fan, see electrical
  - 14.3 Electrical conduit exposed, painted to match adjacent material, see electrical
  - 14.4 90 Degree pull conduit elbow, painted to match adjacent material
  - 14.5 Floor box/conduit, see elect & A/V plans
- 15.0 Miscellaneous
  - 15.1 Future building signage under separate permit

EXTERIOR PAINT / FINISH LEGEND

- P1 DE Swiss Coffee dew341
- P2 DE Heart of Gold det556
- P3 DE Iron River det176
- P4 DE Whale Watching det512

- B1 CMU - Black Mountain integral color
- B2 CMU - Mojave Brown integral color

CASA RAMOS RESTAURANT

1526 E MAIN STREET  
MESA AZ 85203



1920 E Indian School Rd #2072  
Phoenix AZ 85016  
603.466.3286

These documents are instruments of service of the authors and are for use on this project only. They are prepared for use in conjunction with the authors' interpretations, observations, decisions, and administration as described in the scope of work. Without which desired result can not be assured, alterations, reproductions, or use in part or in whole for other purposes without the authors' written consent may violate existing legal statutes.

20005

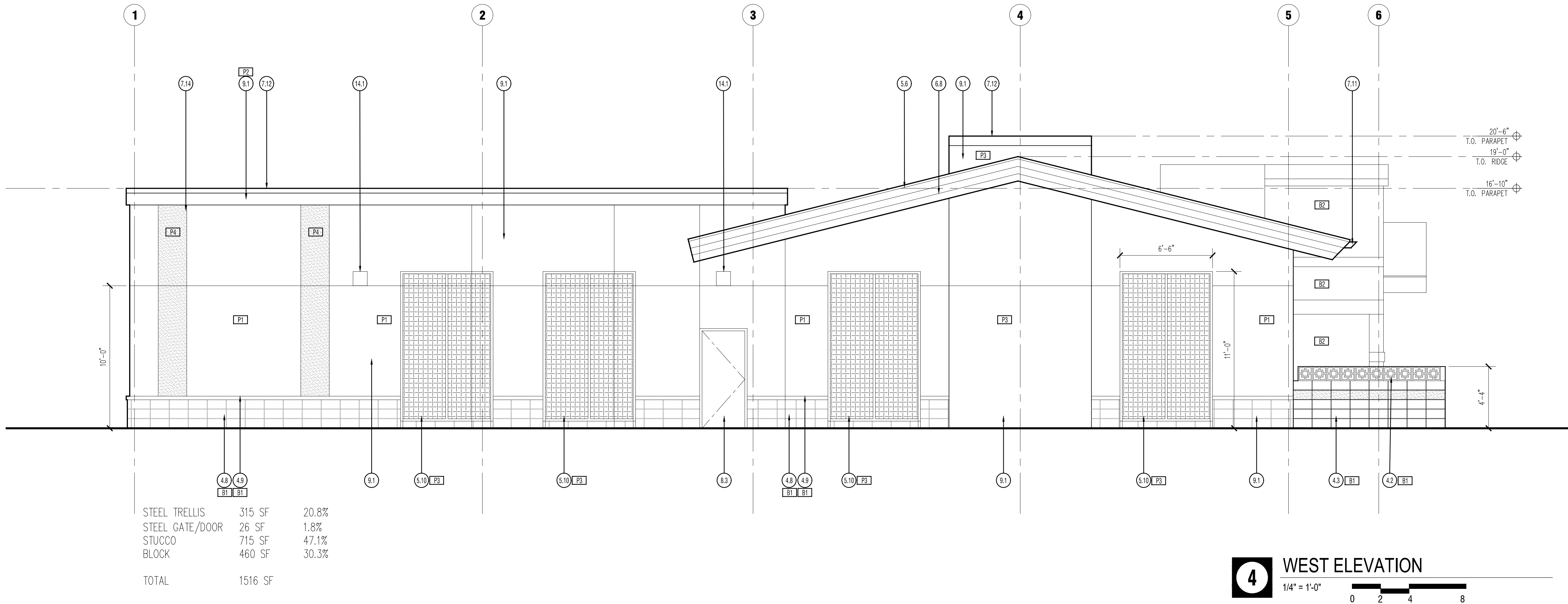
ELEVATIONS

issue date

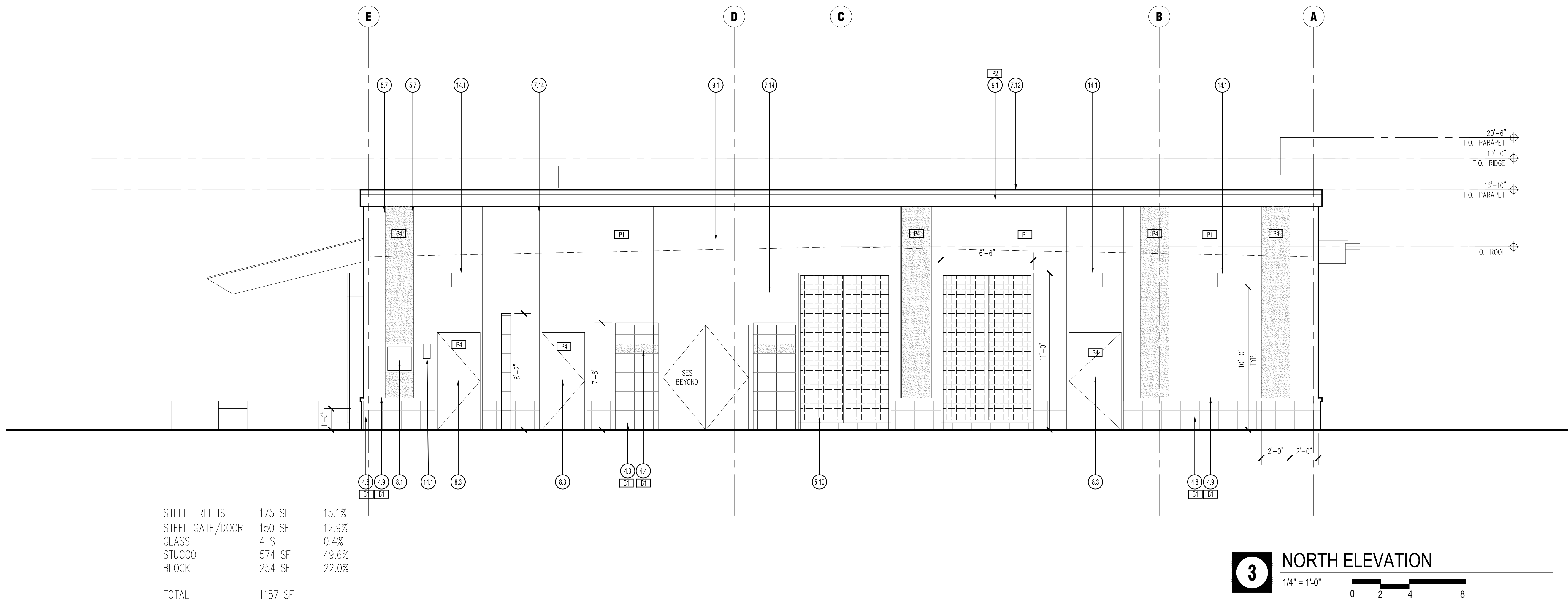
01.31.21

revisions

a  
301



**4** WEST ELEVATION  
1/4" = 1'-0"



**3** NORTH ELEVATION  
1/4" = 1'-0"

## KEYNOTES

Note: Floor Plan, RCP, Roof Plan, Building Elevations, Building Sections and Wall Sections Sheet  
Keynotes Lists are similar where required. Keynote Lists may not appear on every sheet. Reference a  
Keynote List on another sheet if necessary. Keynotes may not be provided on every sheet, GC to  
verify any inconsistencies with architect.

- 1.0 Sitework - Civil
  - 1.1 Rough/Finish grade, see civil
  - 1.2 Landscape/planter area, see landscape
- 2.0 Sitework - Architectural
  - 2.1 Sidewalk, concrete, light broom finish
- 3.0 Concrete
  - 3.1 Concrete slab 4", over 4" ABC fill, see structural
  - 3.2 Concrete footing/turndown, see structural
  - 3.3 Concrete stem wall, see structural
  - 3.4 Expansion joint backer material
  - 3.5 Control joint
- 4.0 Masonry
  - 4.1 Masonry stem wall, see structural
  - 4.2 12"x12" masonry breeze block, integral color
  - 4.3 Masonry wall, 8"x8"x16", smooth face, stacked bond, integral color (see legend), horizontal and vertical raked mortar joints, see structural
  - 4.4 Masonry wall, 8"x8"x16", split face, stacked bond, integral color (see legend), horizontal and vertical raked mortar joints, see structural
  - 4.5 Solid Masonry 2" cap, integral color (see legend), see structural
  - 4.6 8"x8"x16", masonry breeze block, integral color (see legend), see structural
  - 4.7 Concrete block fence, painted, see structural
  - 4.8 8"x2"x16" masonry veneer to match block masonry
  - 4.9 3" masonry sill
- 5.0 Metals
  - 5.1 Structural steel WFTS beam painted, see structural
  - 5.2 Structural steel WFTS column/post, painted, see structural
  - 5.3 Structural steel channel, painted, see structural
  - 5.4 Structural steel angle, painted, see structural
  - 5.5 Metal infill panel 24 gauge, painted
  - 5.6 Metal fascia, 24 gauge Old Country Millwork, "Copper Penny"
  - 5.7 1/2" channel screed, see details
  - 5.8 Steel shelves, blackened steel, sealed
  - 5.9 Standing seam metal roof system, "Dark Bronze"
  - 5.10 Steel angle 3x3 / welded wire fabric 3x3 landscape screen panel assembly, see details painted, see legend
- 6.0 Wood
  - 6.1 Glulam beam, see structural
  - 6.2 Prefab wood truss, see structural
  - 6.3 Plywood sheathing, see structural
  - 6.4 Wood framing, see structural
  - 6.5 Wood blocking, see structural
  - 6.6 Millwork, see interior elevations/finish schedule
  - 6.7 Distressed wood planks
  - 6.8 Distressed wood fascia trim, stained & sealed
- 7.0 Thermal and Moisture Protection
  - 7.1 Slab on grade at interior spaces to have 15 mil under-slab vapor retarder system
  - 7.2 Weather barrier system continuous at exterior walls and eaves, Tyvek CommercialWrap
  - 7.3 Self adhered flexible flashing system at roof transitions/ eaves, vertical/horizontal material transitions, window/door openings at exterior walls
  - 7.4 Spray Polyurethane foam roofing system w/ elastomeric coat over roof sheathing
  - 7.5 R-38 batt insulation under roof deck minimum
  - 7.6 Spray foam insulation at all exterior masonry walls, Core-Fill 500
  - 7.7 Acoustical sound batt insulation
  - 7.8 Metal flashing, painted to match adjacent material
  - 7.9 4" continuous metal soffit vent at eaves
  - 7.10 R-21 batt wall insulation, minimum
  - 7.11 Scupper/gutter with 6" Downspout, painted, see details
  - 7.12 Parapet metal cap flashing 24 gauge, Old Country Millwork "Copper Penny"
  - 7.13 Waterproofing system, continuous system
  - 7.14 Stucco control joint, verify minimum spacing per manufacturers specs
- 8.0 Doors and Windows
  - 8.1 Insulated aluminum glass storefront window/door system, dark bronze, with 1" insulated glazing, PPG Solarban 60 (2) Solargray, SHGC .25, U-Factor .29
  - 8.2 Gate as scheduled
  - 8.3 Exterior insulated door as scheduled
  - 8.4 Interior door as scheduled
- 9.0 Finishes
  - 9.1 Stucco exterior system, western 1-kote, painted, see legend
  - 9.2 Suspended gypsum board ceiling, see interiors/finish schedule
  - 9.3 Suspended 2X4 acoustical tile ceiling, see interiors/finish schedule
  - 9.4 Suspended 2X4 acoustical tile ceiling, cleanable, see interiors/finish schedule
  - 9.5 5/8" gypsum board unless specifically noted otherwise, see wall types/details
  - 9.6 Backer rod and sealant to match adjacent material
  - 9.7 Countertop, see interior/finish schedule
  - 9.8 FRP, see interiors/finish schedule
  - 9.9 Tile, see finish schedule
  - 9.10 LVT, see finish schedule
  - 9.11 Quarry Tile, see finish schedule
- 10.0 Specialties
  - 10.1 Prefab roof hatch, assembly 2'-0"x2'-6" with ladder and accessories for complete installation
- 11.0 Equipment
  - 11.1 Kitchen equipment, see food service plans
- 12.0 Mechanical
  - 12.1 Rooftop mechanical equipment, see mechanical
  - 12.2 Ductwork, see mechanical
- 13.0 Plumbing
  - 13.1 Floor drain, see plumbing
- 14.0 Electrical
  - 14.1 Light fixture, see electrical
  - 14.2 Ceiling fan, see electrical
  - 14.3 Electrical conduit exposed, painted to match adjacent material, see electrical
  - 14.4 90 Degree pull conduit elbow, painted to match adjacent material
  - 14.5 Floor box/conduit, see elect & A/V plans
- 15.0 Miscellaneous
  - 15.1 Future building signage under separate permit

### EXTERIOR PAINT / FINISH LEGEND

- P1 DE Swiss Coffee dew341  
P2 DE Heart of Gold det556  
P3 DE Iron River det176  
P4 DE Whale Watching det512

- B1 CMU - Black Mountain integral color  
B2 CMU - Mojave Brown integral color

## CASA RAMOS RESTAURANT

1526 E MAIN STREET  
MESA AZ 85203



1920 E Indian School Rd #2072  
Phoenix AZ 85016  
623.466.3286

These documents are instruments of service of the  
author and are for use on this project only.  
They are prepared for use in conjunction with  
the author's interpretations, observations, decisions,  
and administration as described in the scope of work  
without which desired result can not be assured.  
alterations, reproductions, or use in part or in whole  
for other purposes without the author's written  
consent may violate existing legal statutes.

20005

ELEVATIONS

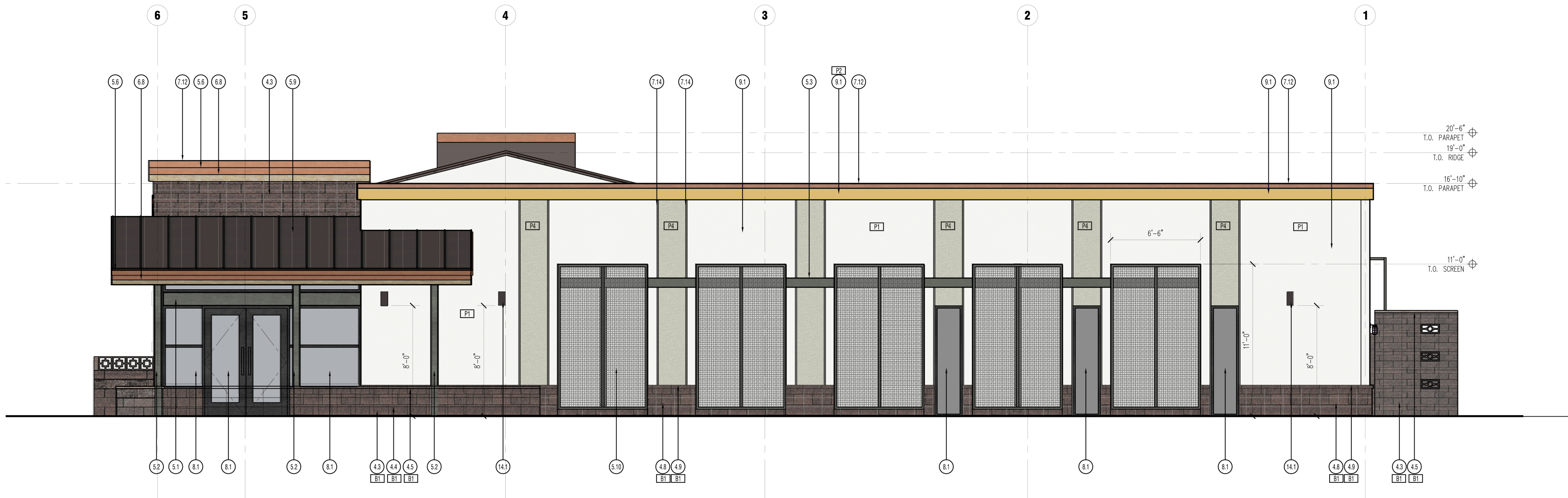
issue date

01.31.21

revisions

**a**  
**302**





2 EAST ELEVATION

1/4" = 1'-0"

0 2 4 8



1 SOUTH ELEVATION

1/4" = 1'-0"

0 2 4 8

## KEYNOTES

Note: Floor Plan, RCP, Roof Plan, Building Elevations, Building Sections and Wall Sections Sheet  
Keynotes Lists are similar where required. Keynote Lists may not appear on every sheet. Reference a Keynote List on another sheet if necessary. Keynotes may not be provided on every sheet, GC to verify any inconsistencies with architect.

- 1.0 Sitework - Civil
  - 1.1 Rough/Finish grade, see civil
  - 1.2 Landscape/planter area, see landscape
- 2.0 Sitework - Architectural
  - 2.1 Sidewalk, concrete, light broom finish
- 3.0 Concrete
  - 3.1 Concrete slab 4", over 4" ABC fill, see structural
  - 3.2 Concrete footing/turndown, see structural
  - 3.3 Concrete stem wall, see structural
  - 3.4 Expansion joint backer material
  - 3.5 Control joint
- 4.0 Masonry
  - 4.1 Masonry stem wall, see structural
  - 4.2 12"x12" masonry breeze block, integral color
  - 4.3 Masonry wall, 8"x8"x16", smooth face, stacked bond, integral color (see legend), horizontal and vertical raked mortar joints, see structural
  - 4.4 Masonry wall, 8"x8"x16", split face, stacked bond, integral color (see legend), horizontal and vertical raked mortar joints, see structural
  - 4.5 Solid Masonry 2" cap, integral color (see legend), see structural
  - 4.6 8"x6"x16", masonry breeze block, integral color (see legend), see structural
  - 4.7 Concrete block fence, painted, see structural
  - 4.8 8"x2"x16" masonry veneer to match block masonry
  - 4.9 3" masonry sill
- 5.0 Metals
  - 5.1 Structural steel WF/TS beam painted, see structural
  - 5.2 Structural steel WF/TS column/post, painted, see structural
  - 5.3 Structural steel channel, painted, see structural
  - 5.4 Structural steel angle, painted, see structural
  - 5.5 Metal infill panel 24 gauge, painted
  - 5.6 Metal fascia, 24 gauge Old Country Millwork, "Copper Penny"
  - 5.7 1/2" channel screed, see details
  - 5.8 Steel shelves, blackened steel, sealed
  - 5.9 Standing seam metal roof system, "Dark Bronze"
  - 5.10 Steel angle 3x3 / welded wire fabric 3x3 landscape screen panel assembly, see details painted, see legend
- 6.0 Wood
  - 6.1 Glulam beam, see structural
  - 6.2 Prefab wood truss, see structural
  - 6.3 Plywood sheathing, see structural
  - 6.4 Wood framing, see structural
  - 6.5 Wood blocking, see structural
  - 6.6 Millwork, see interior elevations/finish schedule
  - 6.7 Distressed wood planks
  - 6.8 Distressed wood fascia trim, stained & sealed
- 7.0 Thermal and Moisture Protection
  - 7.1 Slab on grade at interior spaces to have 15 mil under-slab vapor retarder system
  - 7.2 Weather barrier system continuous at exterior walls and eaves, Tyvek CommercialWrap
  - 7.3 Self adhered flexible flashing system at roof transitions/ eaves, vertical/horizontal material transitions, window/door openings at exterior walls
  - 7.4 Spray Polyurethane foam roofing system w/ elastomeric coat over roof sheathing
  - 7.5 R-38 batt insulation under roof deck minimum
  - 7.6 Spray foam insulation at all exterior masonry walls, Core-Fill 500
  - 7.7 Acoustical sound batt insulation
  - 7.8 Metal flashing, painted to match adjacent material
  - 7.9 4" continuous metal soffit vent at eaves
  - 7.10 R-21 batt wall insulation, minimum
  - 7.11 Scupper/gutter with 6" Downspout, painted, see details
  - 7.12 Parapet metal cap flashing 24 gauge, Old Country Millwork "Copper Penny"
  - 7.13 Waterproofing system, continuous system
  - 7.14 Stucco control joint, verify minimum spacing per manufacturers specs
- 8.0 Doors and Windows
  - 8.1 Insulated aluminum glass storefront window/door system, dark bronze, with 1" insulated glazing, PPG Solarban 60 (2) Solargray, SHGC .25, U-Factor .29
  - 8.2 Gate as scheduled
  - 8.3 Exterior insulated door as scheduled
  - 8.4 Interior door as scheduled
- 9.0 Finishes
  - 9.1 Stucco exterior system, western 1-kote, painted, see legend
  - 9.2 Suspended gypsum board ceiling, see interiors/finish schedule
  - 9.3 Suspended 2X4 acoustical tile ceiling, see interiors/finish schedule
  - 9.4 Suspended 2X4 acoustical tile ceiling, cleanable, see interiors/finish schedule
  - 9.5 5/8" gypsum board unless specifically noted otherwise, see wall types/details
  - 9.6 Backer rod and sealant to match adjacent material
  - 9.7 Countertop, see interiors/finish schedule
  - 9.8 FRP, see interiors/finish schedule
  - 9.9 Tile, see finish schedule
  - 9.10 LVT, see finish schedule
  - 9.11 Quarry Tile, see finish schedule
- 10.0 Specialties
  - 10.1 Prefab roof hatch, assembly 2'-0"x2'6" with ladder and accessories for complete installation
- 11.0 Equipment
  - 11.1 Kitchen equipment, see food service plans
- 12.0 Mechanical
  - 12.1 Rooftop mechanical equipment, see mechanical
  - 12.2 Ductwork, see mechanical
- 13.0 Plumbing
  - 13.1 Floor drain, see plumbing
- 14.0 Electrical
  - 14.1 Light fixture, see electrical
  - 14.2 Ceiling fan, see electrical
  - 14.3 Electrical conduit exposed, painted to match adjacent material, see electrical
  - 14.4 90 Degree pull conduit elbow, painted to match adjacent material
  - 14.5 Floor box/conduit, see elect & AV plans
- 15.0 Miscellaneous
  - 15.1 Future building signage under separate permit

### EXTERIOR PAINT / FINISH LEGEND

- P1 DE Swiss Coffee dew341  
P2 DE Heart of Gold det556  
P3 DE Iron River det176  
P4 DE Whale Watching det512

- B1 CMU - Black Mountain integral color  
B2 CMU - Mojave Brown integral color

## CASA RAMOS RESTAURANT

1526 E MAIN STREET  
MESA AZ 85203



1920 E Indian School Rd #2072  
Phoenix, AZ 85016  
603.466.3286

These documents are instruments of service of the author and are for use on this project only. They are prepared for use in conjunction with the author's professional designations, documents, and administration as described in this document. Without which design result can not be assured. Alteration, reproduction, or use in part or in whole, for other purposes without the author's written consent may violate existing legal statutes.

20005

ELEVATIONS

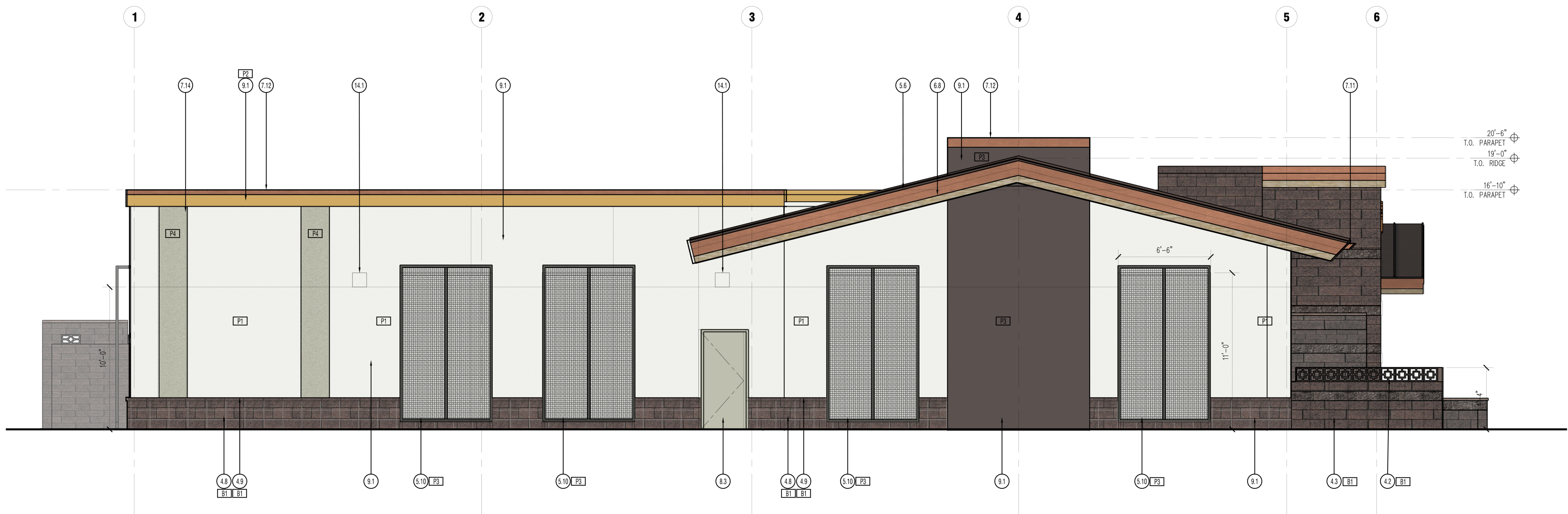
issue date

06.19.18

revisions

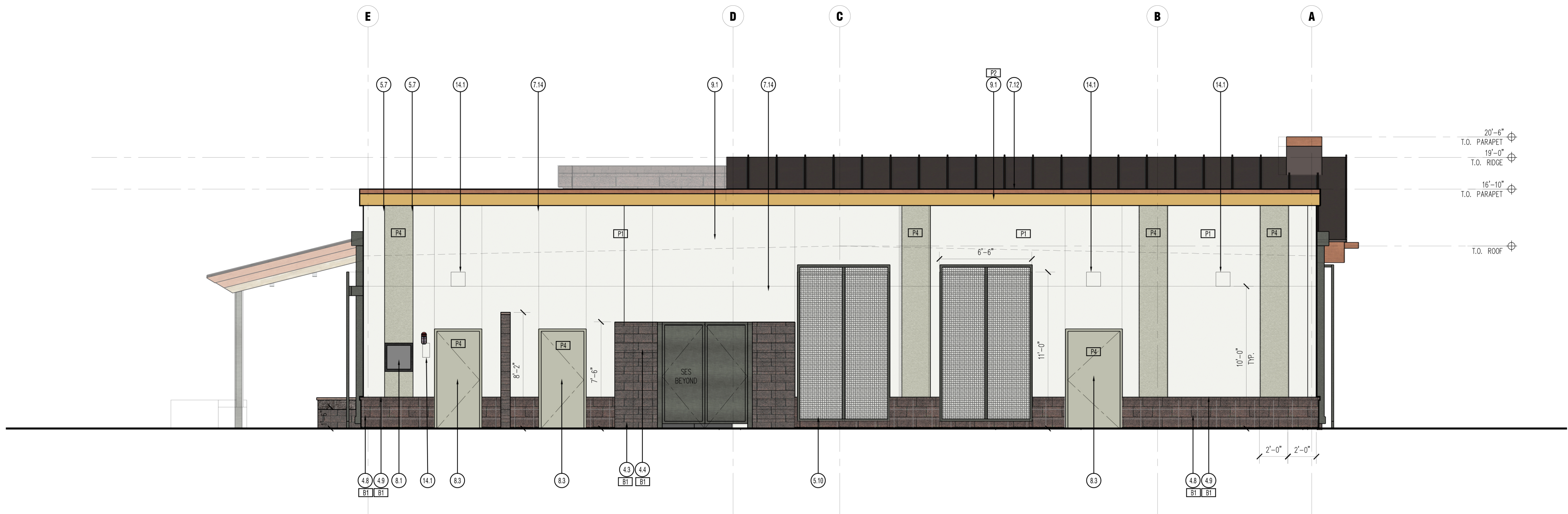
a  
301





4 WEST ELEVATION

1/4" = 1'-0" 0 2 4 8



3 NORTH ELEVATION

1/4" = 1'-0" 0 2 4 8

## KEYNOTES

Note: Floor Plan, RCP, Roof Plan, Building Elevations, Building Sections and Wall Sections Sheet  
Keynote Lists are similar where required. Keynote Lists may not appear on every sheet. Reference a Keynote List on another sheet if necessary. Keynotes may not be provided on every sheet, GC to verify any inconsistencies with architect.

- 1.0 Sitework - Civil
  - 1.1 Rough/Finish grade, see civil
  - 1.2 Landscape/planter area, see landscape
- 2.0 Sitework - Architectural
  - 2.1 Sidewalk, concrete, light broom finish
- 3.0 Concrete
  - 3.1 Concrete slab 4", over 4" ABC fill, see structural
  - 3.2 Concrete footing/turndown, see structural
  - 3.3 Concrete stem wall, see structural
  - 3.4 Expansion joint backer material
  - 3.5 Control joint
- 4.0 Masonry
  - 4.1 Masonry stem wall, see structural
  - 4.2 12"x12" masonry breeze block, integral color
  - 4.3 Masonry wall, 8"x8"x16", smooth face, stacked bond, integral color (see legend), horizontal and vertical raked mortar joints, see structural
  - 4.4 Masonry wall, 8"x8"x16", split face, stacked bond, integral color (see legend), horizontal and vertical raked mortar joints, see structural
  - 4.5 Solid Masonry 2" cap, integral color (see legend), see structural
  - 4.6 8"x6"x16", masonry breeze block, integral color (see legend), see structural
  - 4.7 Concrete block fence, painted, see structural
  - 4.8 8"x2"x16" masonry veneer to match block masonry
  - 4.9 3" masonry sill
- 5.0 Metals
  - 5.1 Structural steel WF/TS beam painted, see structural
  - 5.2 Structural steel WF/TS column/post, painted, see structural
  - 5.3 Structural steel channel, painted, see structural
  - 5.4 Structural steel angle, painted, see structural
  - 5.5 Metal infill panel 24 gauge, painted
  - 5.6 Metal fascia, 24 gauge Old Country Millwork, "Copper Penny"
  - 5.7 1/2" channel screed, see details
  - 5.8 Steel shelves, blackened steel, sealed
  - 5.9 Standing seam metal roof system, "Dark Bronze"
  - 5.10 Steel angle 3x3 / welded wire fabric 3x3 landscape screen panel assembly, see details painted, see legend
- 6.0 Wood
  - 6.1 Glulam beam, see structural
  - 6.2 Prefab wood truss, see structural
  - 6.3 Plywood sheathing, see structural
  - 6.4 Wood framing, see structural
  - 6.5 Wood blocking, see structural
  - 6.6 Millwork, see interior elevations/finish schedule
  - 6.7 Distressed wood planks
  - 6.8 Distressed wood fascia trim, stained & sealed
- 7.0 Thermal and Moisture Protection
  - 7.1 Slab on grade at interior spaces to have 15 mil under-slab vapor retarder system
  - 7.2 Weather barrier system continuous at exterior walls and eaves, Tyvek CommercialWrap
  - 7.3 Self adhered flexible flashing system at roof transitions/ eaves, vertical/horizontal material transitions, window/door openings at exterior walls
  - 7.4 Spray Polyurethane foam roofing system w/ elastomeric coat over roof sheathing
  - 7.5 R-38 batt insulation under roof deck minimum
  - 7.6 Spray foam insulation at all exterior masonry walls, Core-Fill 500
  - 7.7 Acoustical sound batt insulation
  - 7.8 Metal flashing, painted to match adjacent material
  - 7.9 4" continuous metal soffit vent at eaves
  - 7.10 R-21 batt wall insulation, minimum
  - 7.11 Scupper/gutter with 6" Downspout, painted, see details
  - 7.12 Parapet metal cap flashing 24 gauge, Old Country Millwork "Copper Penny"
  - 7.13 Waterproofing system, continuous system
  - 7.14 Stucco control joint, verify minimum spacing per manufacturers specs
- 8.0 Doors and Windows
  - 8.1 Insulated aluminum glass storefront window/door system, dark bronze, with 1" insulated glazing, PPG Solarban 60 (2) Solargray, SHGC .25, U-Factor .29
  - 8.2 Gate as scheduled
  - 8.3 Exterior insulated door as scheduled
  - 8.4 Interior door as scheduled
- 9.0 Finishes
  - 9.1 Stucco exterior system, western 1-kote, painted, see legend
  - 9.2 Suspended gypsum board ceiling, see interiors/finish schedule
  - 9.3 Suspended 2X4 acoustical tile ceiling, see interiors/finish schedule
  - 9.4 Suspended 2X4 acoustical tile ceiling, see interiors/finish schedule
  - 9.5 5/8" gypsum board unless specifically noted otherwise, see wall types/details
  - 9.6 Backer rod and sealant to match adjacent material
  - 9.7 Countertop, see interiors/finish schedule
  - 9.8 FRP, see interiors/finish schedule
  - 9.9 Tile, see finish schedule
  - 9.10 LVT, see finish schedule
  - 9.11 Quarry Tile, see finish schedule
- 10.0 Specialties
  - 10.1 Prefab roof hatch, assembly 2'-0"x2'-6" with ladder and accessories for complete installation
- 11.0 Equipment
  - 11.1 Kitchen equipment, see food service plans
- 12.0 Mechanical
  - 12.1 Rooftop mechanical equipment, see mechanical
  - 12.2 Ductwork, see mechanical
- 13.0 Plumbing
  - 13.1 Floor drain, see plumbing
- 14.0 Electrical
  - 14.1 Light fixture, see electrical
  - 14.2 Ceiling fan, see electrical
  - 14.3 Electrical conduit exposed, painted to match adjacent material, see electrical
  - 14.4 90 Degree pull conduit elbow, painted to match adjacent material
  - 14.5 Floor box/conduit, see elect & AV plans
- 15.0 Miscellaneous
  - 15.1 Future building signage under separate permit

### EXTERIOR PAINT / FINISH LEGEND

- P1 DE Swiss Coffee dew341  
P2 DE Heart of Gold det556  
P3 DE Iron River det176  
P4 DE Whale Watching det512

- B1 CMU - Black Mountain integral color  
B2 CMU - Mojave Brown integral color

## CASA RAMOS RESTAURANT

1526 E MAIN STREET  
MESA AZ 85203



1920 E Indian School Rd #2072  
Phoenix AZ 85016  
603.466.3286

These documents are instruments of service of the author and are for use on this project only. They are prepared for use in conjunction with the author's professional designations, decisions, and administration as described in this document. Without which design result can not be assured. Alteration, reproduction, or use in part or in whole, for other purposes without the author's written consent may violate existing legal statutes.

20005

ELEVATIONS

issue date

06.19.18

revisions

a  
302