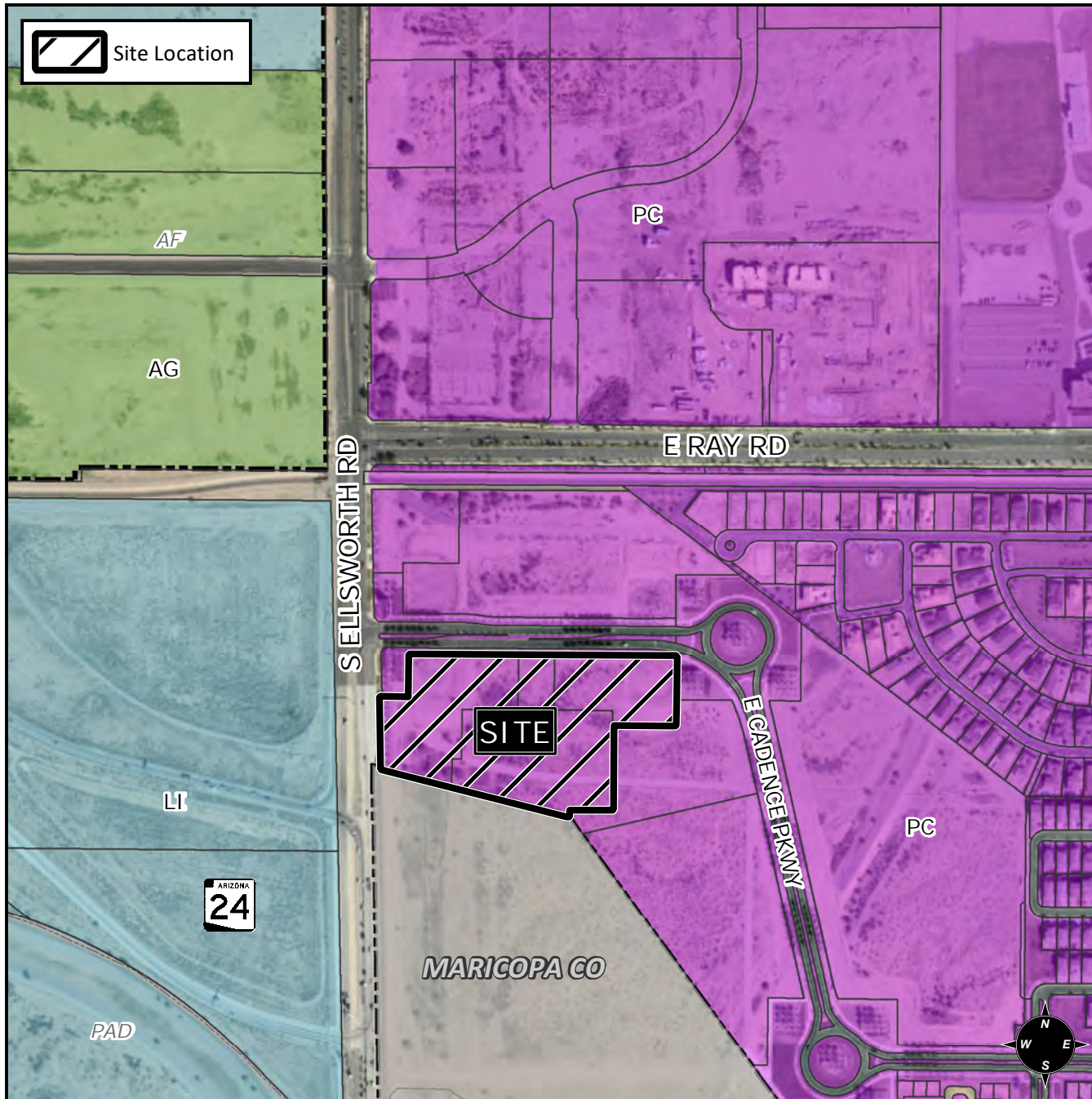


## Final Plat Vicinity Map



## Case Details

### Project:

Cadence at Gateway South

### Site/Address:

District 6. Within the 5300 block of South Ellsworth Road (east side) and within the 9200 to 9400 blocks of East Cadence Parkway (south side). Located east of Ellsworth Road and south of Ray Road. (8.08± acres)

### Description:

PPGN-Ellsworth, LLLP, Developer. Raymond S Munoz III, EPS Group, Surveyor.

