

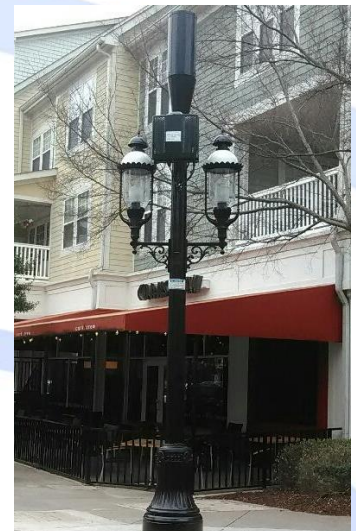
valmont®



Larson™

STRUCTURES

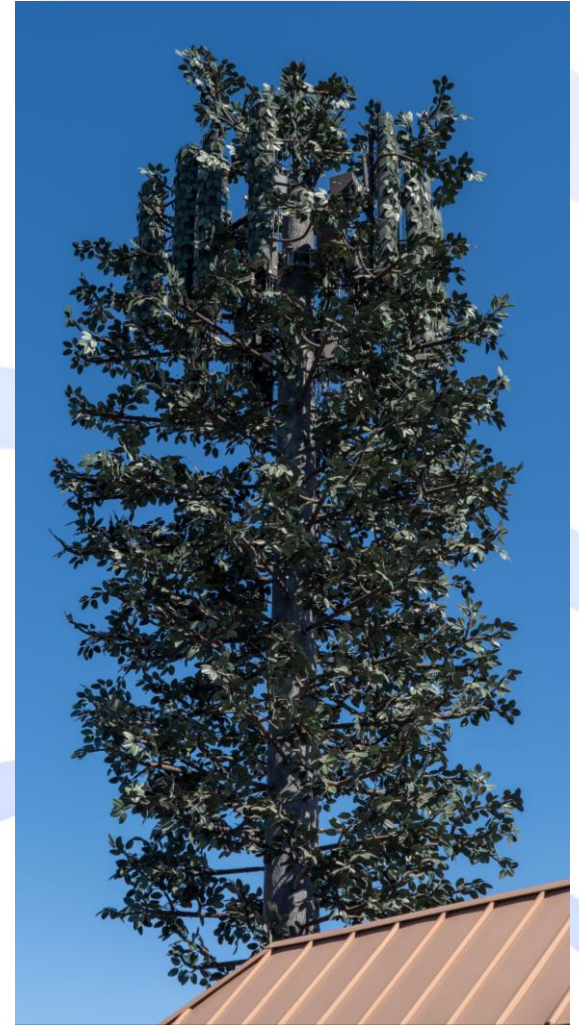
ELM & BROADLEAF PRODUCT INFORMATION



LARSON MONO-TREES



- **Larson** created the very first mono-pine cellular tower in 1992
- The shortest mono-tree **Larson** has produced is 9ft, the tallest is 198ft
- **Larson** branches have been wind tunnel tested up to 140 mph



- Standard Elm branch lengths are:
4ft, 6ft, 8ft, 10ft and 12ft
- 14' and 16' branches are also available



LARSON MONO-ELM / BROADLEAF FOLIAGE OPTIONS



All foliage is available in different colors to achieve the best match to native trees in an area.



ELM / BROADLEAF
FOLIAGE



A mixture of two different foliage colors is used on each tree to provide a natural appearance.



Larson foliage contains realistic design elements such as insect damage, veins and texture.



LARSON MONO-TREE BARK & FINISH OPTIONS



STANDARD PINE BARK



STANDARD BROADLEAF
(MAGNOLIA / ELM) BARK



PREMIUM PINE /
REDWOOD BARK



EUCALYPTUS
BARK

- Trees can be finished with realistic bark, painted brown, or camouflage painted.
- Bark textures are painted with multiple colors and washes to create a natural bark appearance.
- Bark is applied wet, directly to the pole and textured.
- Poles are etched prior to application of bark to ensure a strong bond between bark and the galvanized pole.



LARSON MONO-ELM / BROADLEAF PROFILES



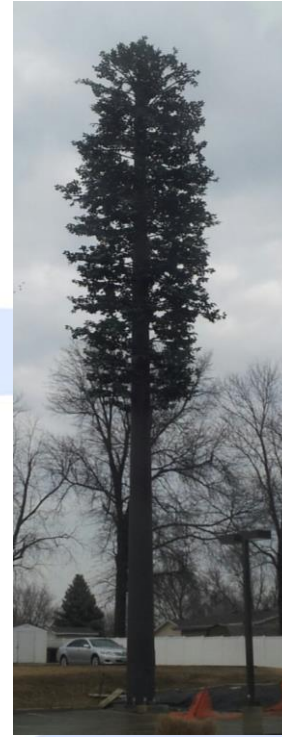
65' CONICAL PINE
TAPER



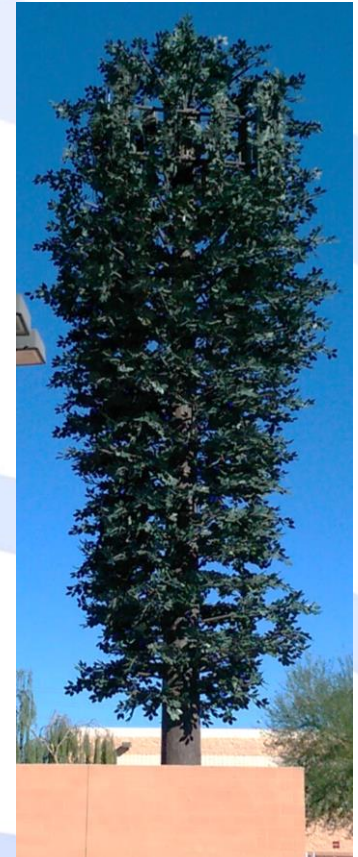
47' BROADLEAF
STANDARD TAPER



20' BROADLEAF
LOLLIPOP TAPER



95' BROADLEAF
STANDARD TAPER



60' BROADLEAF
INVERTED TAPER

Larson mono-trees can be designed with different profile tapers in order to customize their appearance to satisfy jurisdictional requirements.



LARSON ANTENNA SOCKS AND SPECIALTY BRANCHES

ANTENNA + SOCK + BRANCHES



RF-friendly **Larson Antenna Socks** are vital to camouflage antennas within the canopy of the tree & the addition of **Larson Antenna Branches** can create complete concealment.

MONO-ELM WITH AND WITHOUT ANTENNA BRANCHES



Microwave & RRU Socks & Branches are also available to help all equipment blend into the canopy.

