

BASIS OF BEARING

BASIS OF BEARING IS THE SOUTH LINE OF THE SOUTHWEST QUARTER, SECTION 6, TOWNSHIP 1 NORTH, RANGE 6 EAST OF THE GILA AND SALT RIVER BASE AND MERIDIAN. (BEARING: N90°00'00"E)

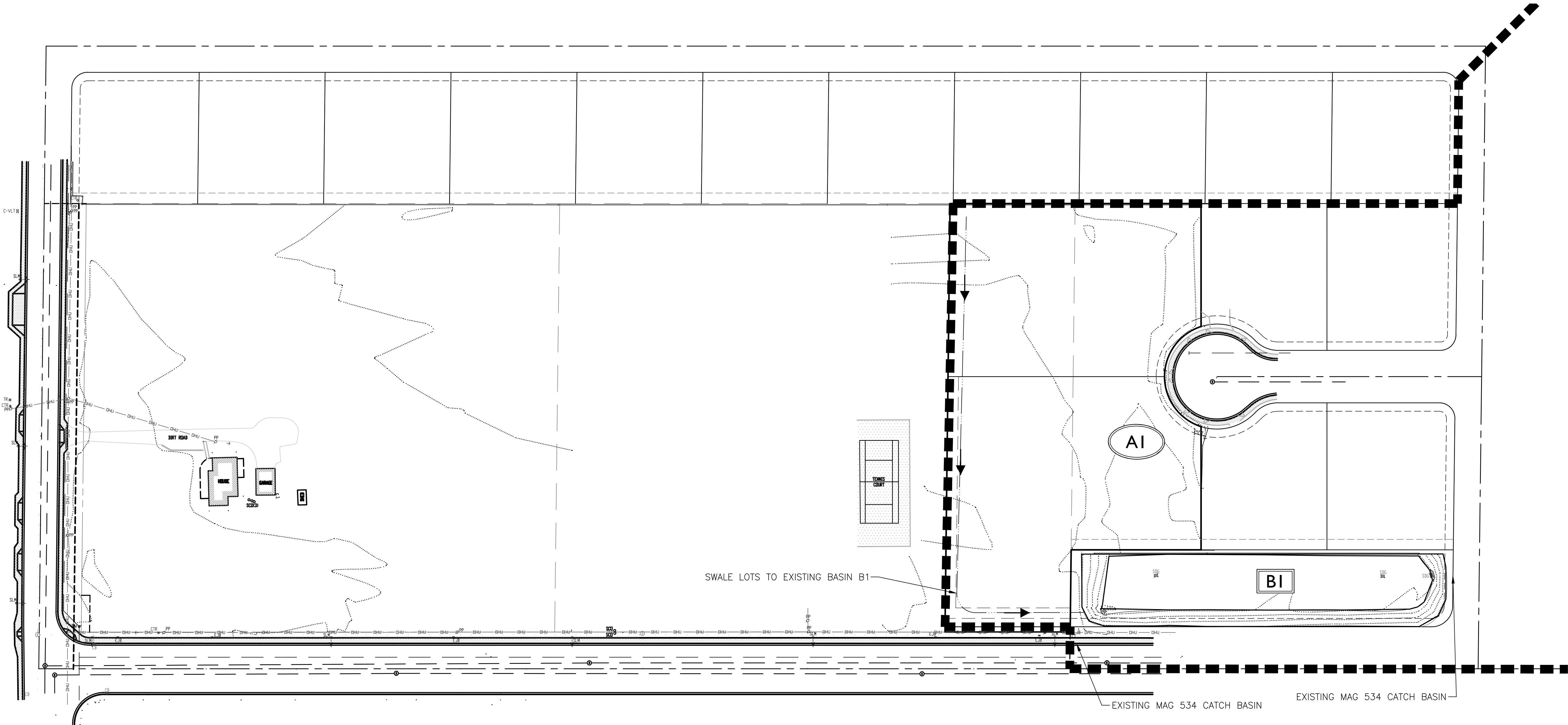
BENCHMARK

COM BRASS TAG ON TOP OF CURB
SEC GILBERT ROAD AND MCKELLIPS ROAD
ELEVATION = 1284.24' NAVD88 (CITY OF MESA DATUM)

100-YR RUNOFF & RETENTION CALCULATIONS:

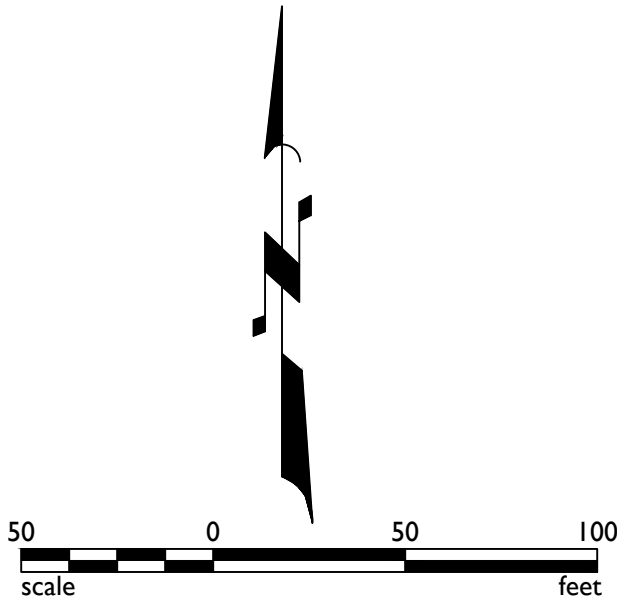
VOLUME REQUIRED:
 $V_{REQ} = C * A * P / 12$
WHERE: V_{REQ} = RUNOFF VOLUME (AC-FT)
 C = COMPOSITE RUNOFF COEFFICIENT
 P = 100-YR, 2-HR RAINFALL DEPTH (IN) = 2.20-IN
 A = AREA (AC)

BASIN ID	"C"	P (IN)	A (SF)	V REQ (CF)	V PROV (CF)	EXCESS VOLUME
B1	0.69	2.2	362,199*	45,818	58,644	+12,826
*INCLUDES EXISTING STREETS AND LOTS TO THE EAST						



LEGEND

- A### DRAINAGE AREA IDENTIFICATION
- B### BASIN IDENTIFICATION
- EXISTING DRAINAGE FLOW ARROW
- DRAINAGE FLOW ARROW
- GRADE BREAK
- STORM DRAIN MANHOLE
- STORM DRAIN PIPE
- DRAINAGE AREA BOUNDARY



2045 S. Vineyard Ave, Suite 101
Mesa, AZ 85210
T:480.503.2250 | F:480.503.2258
www.epsgroupinc.com

EPS

GROUP

Project:

Menlo Circle
Mesa, Arizona

Revisions:

Call at least two full working days
before site begins excavation.

ARIZONA

REGISTERED PROFESSIONAL ENGINEER

DAVID B. AUXIER

12/27/20

Designer: DMA
Drawn by: DMA

Job No.
20-1554

GD01

Sheet No.
1
of 1