



DESIGN REVIEW BOARD

February 9, 2021



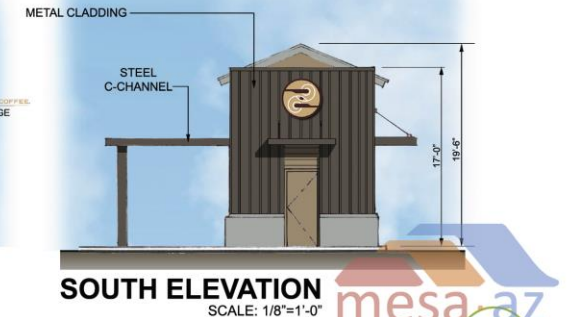
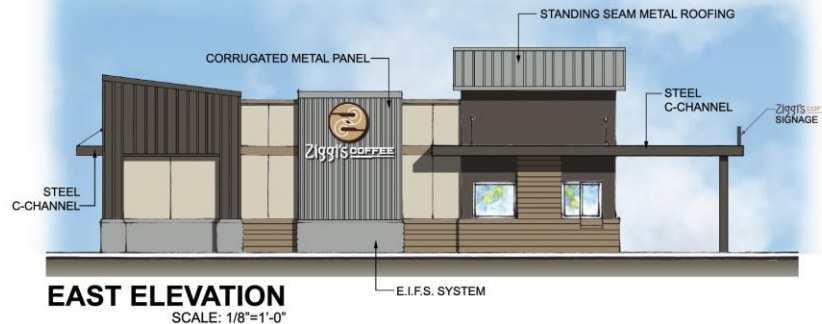
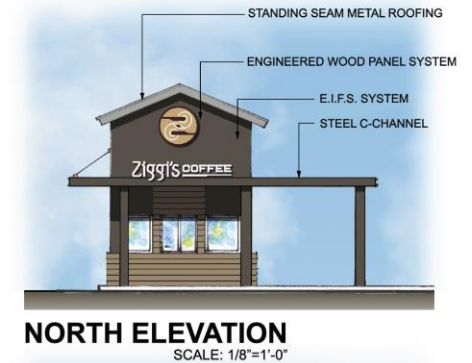
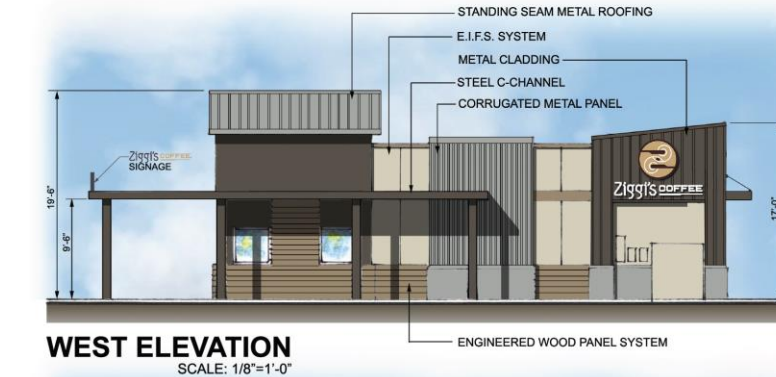
DESIGN REVIEW APPROVALS

Ziggi's Coffee

DRB20-00666

Southeast Corner Sossaman and
Guadalupe Roads

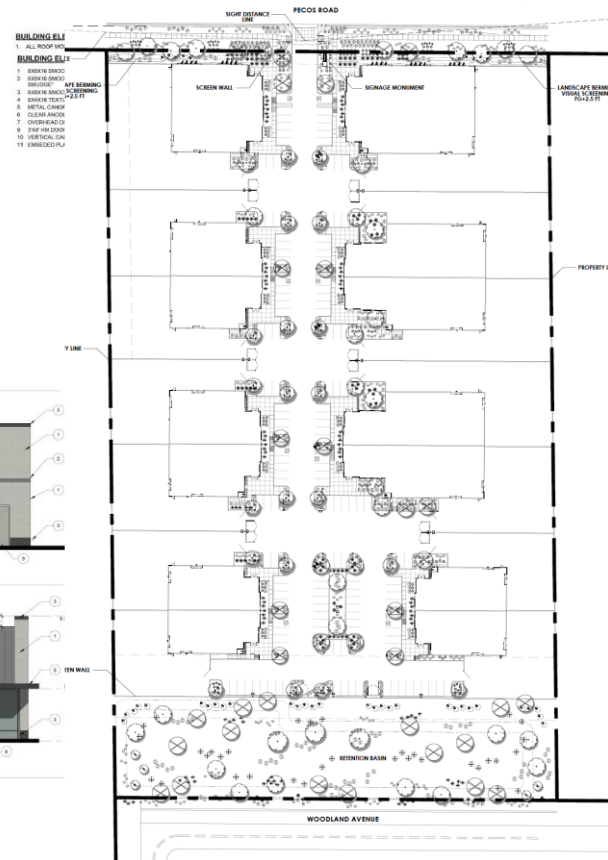
- Canopy Downlighting 3500K
- Coolibah for Ghost Gum
- Locally sourced decomposed granite



ZIGGI'S COFFEE AT SOSSAMAN
7645 E. GUADALUPE ROAD
MESA, ARIZONA 85212

mesa.az
DESIGN REVIEW BOARD
CONDITIONS ARE MET
300
STEWART + BEINDERBMA
ARCHITECTURE
8145 E. INDIAN BEND ROAD
SCOTTSDALE, AZ 85256
P: (480) 915-5123

10-22-2020
10-19-2020



Pecos 10

DRB19-00716

8607 East Pecos Road

- Modified landscape plan
- Removed split face CMU from site wall

Dental Depot

DRB20-00495

2311 West Broadway Road

- Lightened the Color Palette
- Drought Tolerant Landscaping
- Standing Seam Metal Roof





Dutch Bros

DRB20-00606

2709 South Signal Butte Road

- Provided landscaping closer to the building
- Modified south elevation for spacing at material change
- Added "Cobra Style" lights

Taco Bell

DRB20-00592

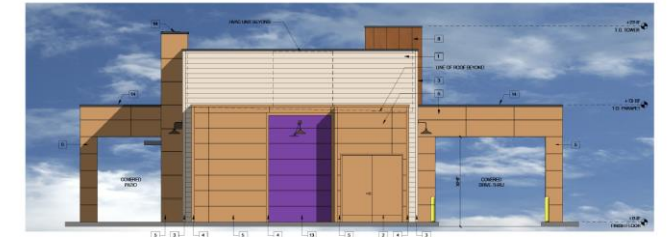
1125 South Signal Butte Road

- Reduced the amount of Hardie Plank siding
- Changed trim color to match siding



WEST ELEVATION

SCALE: 5/8\"/>



EAST ELEVATION

SCALE: 5/8\"/>



SOUTH ELEVATION

SCALE: 5/8\"/>



NORTH ELEVATION

SCALE: 5/8\"/>

MSF CADENCE
MATERIAL AND
COLOR PALETTE



DUNN EDWARDS
DEC795
COLOR: GRAY PEARL



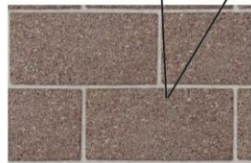
DUNN EDWARDS
DE6368
COLOR: WALRUS



MILLERCLAPPERTON
ALUCOBOND PLUS (ACM PANEL)
COLOR: STATUARY BRONZE



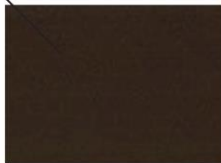
SOLARBAN® 72 (2)
STARPHIRE® + STARPHIRE
AQUAMARINE TINT
REFLECTIVITY - LOW



TRENWYTH MESASTONE
SANDBLASTED CMU
COLOR: MOJAVE BROWN



TRENWYTH TR
GROUNDFACE
COLOR: BONE



Mountain Side Fitness

DRB20-00244

East of Ellsworth Road on the
south side of Cadence Parkway

- Verified gray color harmonizes with the rest of the development

McDonald's

DRB20-00502

Northeast Corner of Gilbert and McKellips Roads

- Thickened purlins on drive thru canopy





Front Elevation			Side Elevation			Back Elevation		
Material	Area (SF)	Percentage	Material	Area (SF)	Percentage	Material	Area (SF)	Percentage
EPS	435	26.5	EPS	208	25.8	EPS	322	21.5
BRICK	565	34.5	BRICK	402	49.7	BRICK	715	47.5
GLASS	350	21.3	GLASS	159	19.8	GLASS	250	16.5
METAL	160	9.8	METAL	38	4.7	METAL	32	2.1
SIGNAGE	130	7.9				SIGNAGE	100	6.6
TOTALS	1640	100%	TOTALS	805	100%	TOTALS	1505	100%

APPROVE
08/06

QT Quick Trip

DRB20-00399

3547 East Southern Avenue

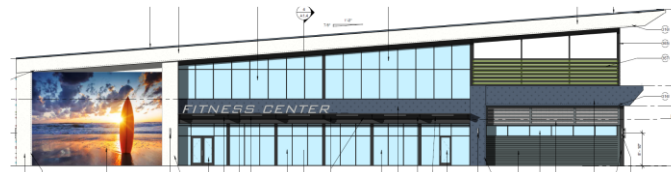
- Verified height of screen wall
- Modernized the parapet

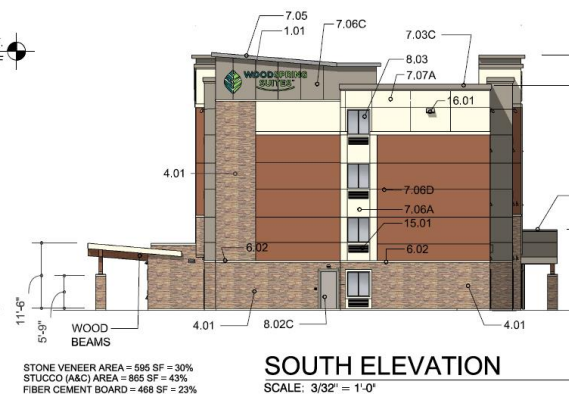
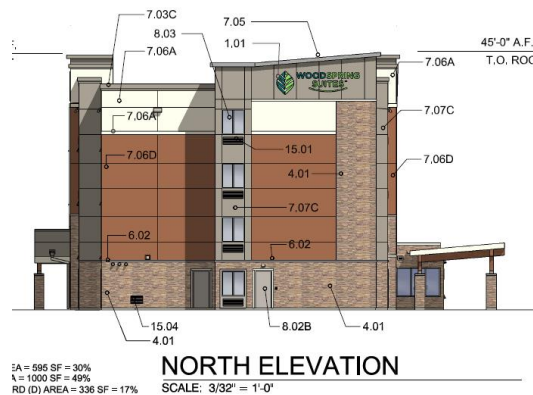


Cannon Beach

DRB20-00607

Southeast corner of Power Road and
Warner Road





Woodspring Suites

DRB20-00489

Northeast corner of Mesa Drive
and Baseline Road

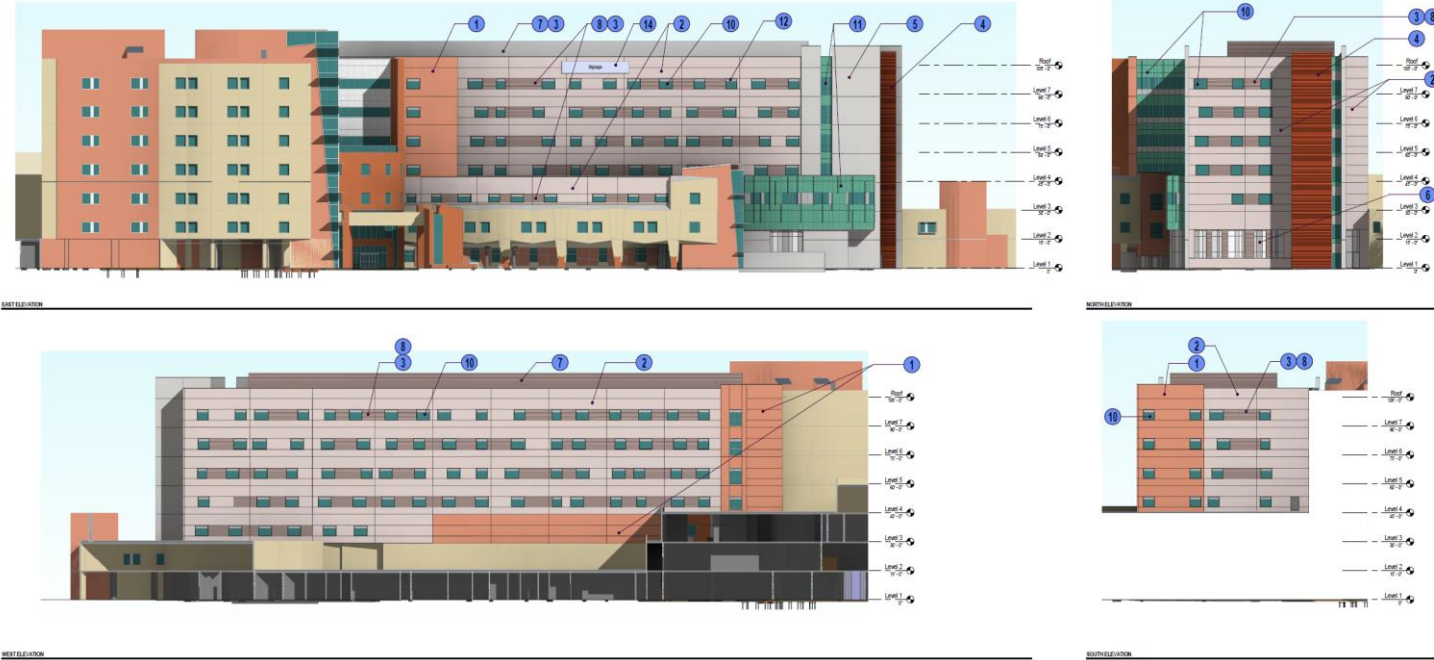
- Consolidated exhaust vents
- Internalized downspouts

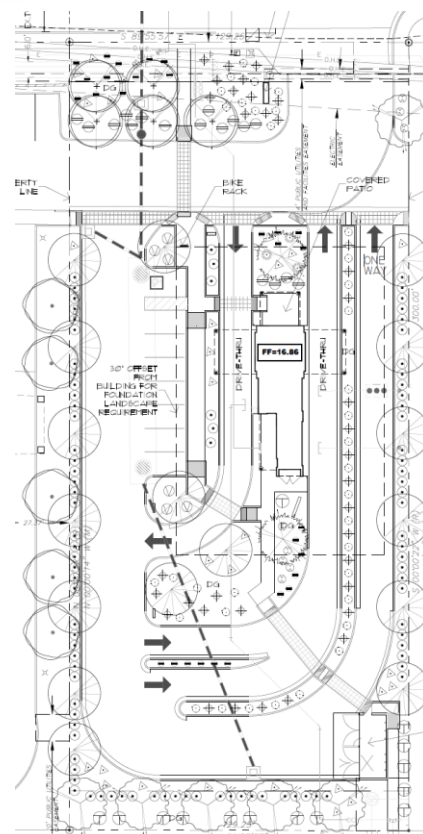
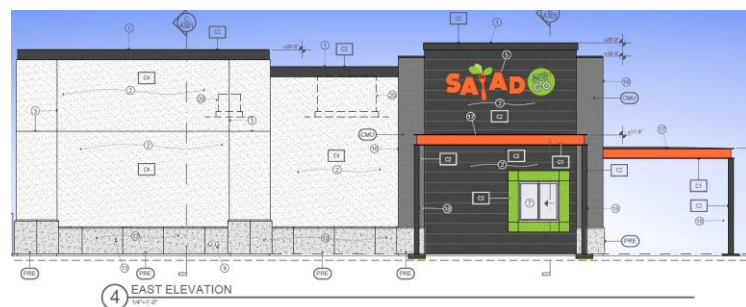
Banner Desert Medical Center

DRB20-00685

Southwest corner of Southern Road
and Dobson Road

- Color added to west and south elevation
- Parapet change on west and south elevation





Salad and Go

DRB20-00623

Northeast corner of Mesa Drive
and Baseline Road

- Darkened shade of white
- Changed landscape palette along east and west property lines



DESIGN REVIEW BOARD

February 9, 2021