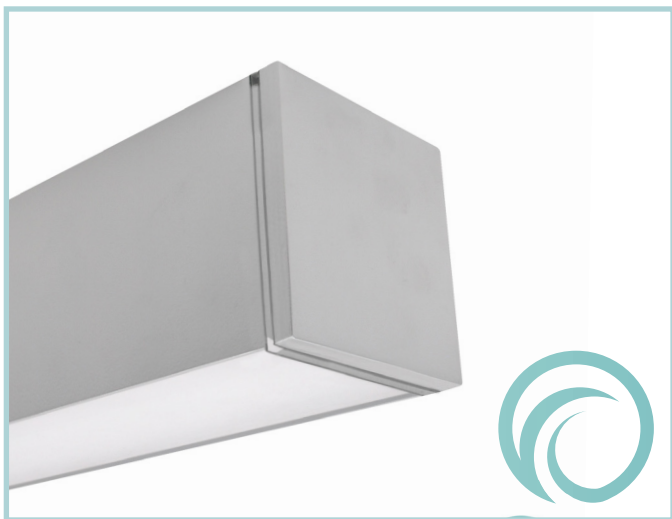
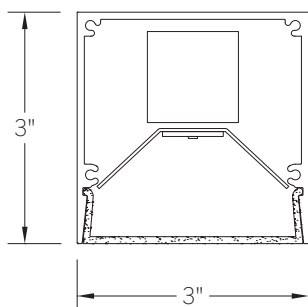


3" square rectilinear LED fixture with flush lens for outdoor applications

Project: _____ Type: _____



SECTION



FEATURES

The BSW214 is a linear LED luminaire for outdoor lighting applications. The 3" square extrusion is fitted with a flush, frosted lens and machined aluminum end caps.

SPECIFICATIONS

Fixture constructed of an extruded aluminum, extruded, frosted acrylic lens and machined aluminum end caps

Standard finishes as shown below

Available for surface or wall mounting in nominal lengths of 2'-8" single fixtures and continuous runs for surface and wall mount applications

Housing provided with a Ø7/8 hole for back feeding

Standard integral 120-277V wet location driver offered with 0-10V dimming or non-dim

Standard outputs are 390, 775 and 1000 lumens per foot

LEDs available in 2700K, 3000K, 3500K and 4000K, within a 3 step MacAdam ellipse, all with 80+ CRI typical

Life: 50,000 hours L_{70}

Limited five year warranty

UL and C-UL listed for wet locations

PERFORMANCE

NOMINAL LENGTH	OUTPUT	LUMENS/ft.	WATTS/ft.	LUMINAIRE LUMENS	EFFICACY (LPW)
4'	L: low	390	4.0	1554	98
	R: regular	775	8.0	3104	97
	H: high	1000	10.3	3995	97

Note: All data reflects fixtures with 3500K LEDs



BSW214 -

NOMINAL FIXTURE LENGTH*	CORRELATED COLOR TEMPERATURE	DRIVER IN: non-dimming ID: 0-10V dimming, 5%	LIGHT OUTPUT (lumens per foot) L: low - 390 R: regular - 775 H: high - 1000	MOUNT SM: surface mount WD: wall mount - direct WL: wall mount - indirect	RUN CONFIGURATION SN: single ST: starter AD: adder TR: terminator	FINISH AW: architectural white (semi-matte) WH: white (semi-gloss) BL: black (semi-matte) MB: matte black ESS: environmental satin silver BZ: bronze PR: primer CF: consult factory for custom finish
2: 24-5/8"	27: 2700K-80+ CRI					
3: 36-5/8"	30: 3000K-80+ CRI					
4: 48-5/8"	35: 3500K-80+ CRI					
5: 60-5/8"	40: 4000K-80+ CRI					
6: 72-5/8"						
7: 84-5/8"						
8: 96-5/8"						

* Actual dimension dependent on run configuration

FLOOD ONE EOTM

SL1 & SL1A

ACCLAIM
LIGHTING



Client:

Project:




Type:

Order Code:

Quantity:

Flood One EO is a high output, outdoor rated, white LED floodlight. It features an internal 100-277VAC power supply, 0-10V dimming, and a very low profile design to fit into small spaces. It comes with a 10° beam standard, with optional spread lenses for wider applications. It is ideal for facade lighting applications and as an area floodlight.

SPECIFICATIONS

Colors	2700K, 3000K, 3500K, 4000K
Beam Angles	10° standard, 20°, 40°, 60°, 90°, 10° x 60° spread lens options
Photometrics	Up to 3940 lumens, 85,734 center candela, >80 CRI
Effective Projected Area	1.01 ft ²
Control	0-10V Sink, 1-100%
Max Fixtures in Series	Not linkable, AC power and 0-10V local to each fixture
Power Consumption	60W peak, 55W steady state
Operating Voltage	100-277VAC, 50/60 Hz
Lumen Maintenance	L70 @ 150,000 hours (25° C)
Mounting	Surface mount bracket included, optional tenon mount and pipe clamp available
Finish	Gray standard (RAL 7047), black, white, and custom colors optional
Material	Die cast aluminum, glass lens, optional marine coating available
Ambient Operating Temperature	-40° F to 125° F (-40° C to 51° C)
IP Rating	IP66, wet location
IK Rating	IK07, protection against 2 joule impact
Fixture Connectors	Attached 5' (1.5m) IP66 AC cable, separate 5' (1.5m) 0-10V cable
Warranty	5 Years, limited
Weight	11 lbs (5 kg)
Dimensions	L: 12.48" x W: 7.83" x D: 5.31" (317mm x 199mm x 135mm)
Certifications	  

ORDER CODES

* indicates special order

FOB# - FBC# - FBO#

Housing Color:

- 1 = Black* (RAL 9005)
- 2 = White* (RAL 9003)
- 4 = Gray (RAL 7047)
- 7 = Custom* (Provide RAL #)

Color Kit:

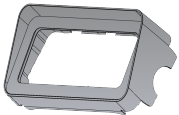
- A = 2700K, 80 CRI
- C = 3000K, 80 CRI
- D = 3500K, 80 CRI
- E = 4000K, 80 CRI

Optic Kit:

- C = 10° x 10°
- E = 20° x 20°
- H = 40° x 40°
- K = 60° x 60°
- O = 90° x 90°
- P = 10° x 60°

RELATED COMPONENTS

Optional Beam Accessories



FBHSG

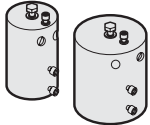
Half snoot for Flood One EO

FBFSG

Full snoot for Flood One EO

RELATED COMPONENTS

Optional Mounting Accessories



TM2

2" pipe, schedule 40 tenon mount
(2.51", 56mm inner dia.)

TM4

3.5" pipe, schedule 40 tenon mount
(4.13", 105mm inner dia.)



PC2

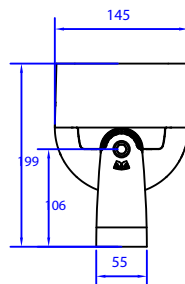
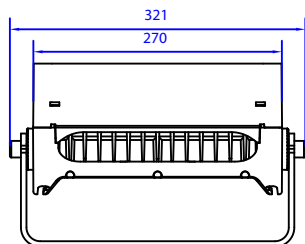
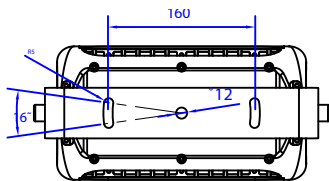
2" pipe, schedule 40 pipe clamp (2.51", 56mm inner dia.)
mounts 1 or 2 fixtures

PC4

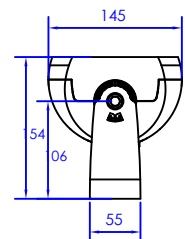
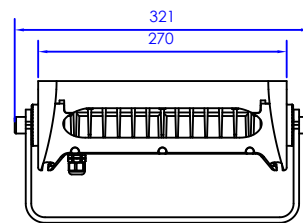
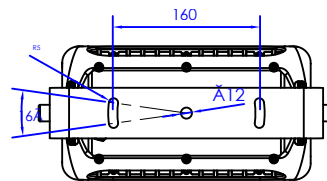
4" pipe, schedule 40 pipe clamp (4.13", 105mm inner dia.)
mounts 1 or 2 fixtures

DIMENSIONS (in mm)

With snoot

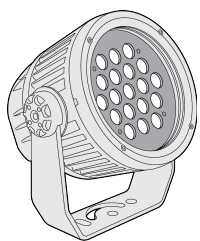


Without snoot



PHOTOMETRICS

Color Temp / Beam	Lumens	Center Candela	Efficacy (l/pw)	CRI (Ra)	TM30
2700K, 10°	Testing in progress				
3000K, 10°	3,188	63,297	58	80.7	80.2
3500K, 10°	Testing in progress				
4000K, 10°	3,940	85,734	71	80.2	79.8
5700K, 10°	Testing in progress				



Client:	
Project:	
Type:	
Order Code:	
Quantity:	

Dyna Drum EO SCS is a high output, outdoor rated, multi-color LED floodlight. It features an internal 100-277VAC power supply, onboard DMX+RDM driver, and each unit carries Acclaim's Aria wireless DMX technology inside. It comes with a narrow 8° beam standard, with optional quick-change spread lenses for wider applications. It is ideal for facade lighting applications and as an area floodlight.

SPECIFICATIONS

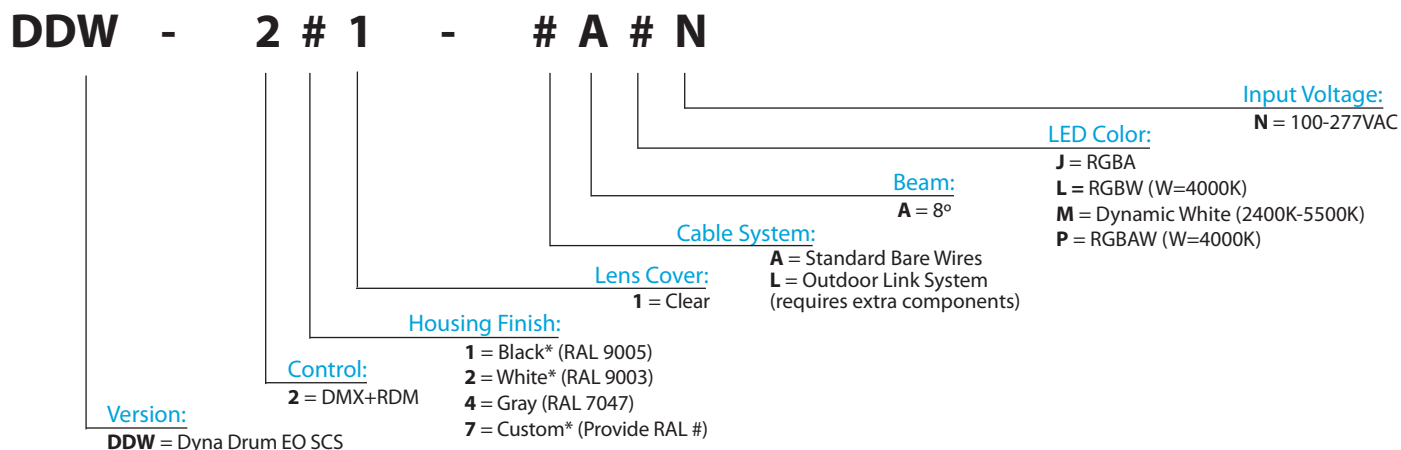
Colors	RGBW (W=4000K), RGBA, RGBAW (W=4000K), DW (2400K-5500K)
Beam Angles	8° standard, 20°, 40°, 60°, 10° x 60° spread lens options
Photometrics	See page 4, up to 2,268 lumens, 104,302 center candela
Effective Projected Area	0.72 ft ²
Control	DMX+RDM, manual color setting in menu, photocell included, Aria wireless direct connect
Max Fixtures in Series	32 via DMX, power local to each fixture
Power Consumption	55W maximum
Operating Voltage	100-277VAC, 50/60 Hz
Lumen Maintenance	L70 @ 150,000 hours (25° C)
Mounting	Surface mount bracket included, optional tenon mount and pipe clamp available
Finish	Gray standard (RAL 7047), black, white, and custom colors optional
Material	Die cast aluminum, polycarbonate lens, optional marine coating available
Ambient Operating Temperature	-40° F to 125° F (-40° C to 51° C)
IP Rating	IP66, wet location
IK Rating	IK07, protection against 2 joule impact
Fixture Connectors	Attached 5' (1.5m) IP66 hybrid cable, AC power +DMX/RDM
Warranty	5 Years, limited
Weight	11.68 lbs. (5.3 kg)
Dimensions	L: 9.6" x W: 8.81" x D: 6.49" (244mm x 224mm x 165mm)

Certifications



ORDER CODES

* indicates special order



RELATED COMPONENTS

Optional Beam Accessories

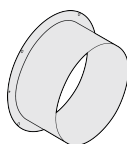


DDEOSL20
20° Spread lens for Dyna Drum EO

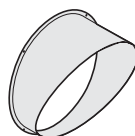
DDEOSL40
40° Spread lens for Dyna Drum EO

DDEOSL60
60° Spread lens for Dyna Drum EO

DDEOSL1060
10° x 60° Spread lens for Dyna Drum EO



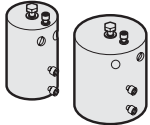
DDEOFSG Full snoot for Dyna Drum EO, Gray
DDEOFSB Full snoot for Dyna Drum EO, Black
DDEOFSW Full snoot for Dyna Drum EO, White



DDEOHSG Half snoot for Dyna Drum EO, Gray
DDEOHSB Half snoot for Dyna Drum EO, Black
DDEOHSW Half snoot for Dyna Drum EO, White

RELATED COMPONENTS

Optional Mounting Accessories



TM2

Use with 2" pipe, schedule 40 tenon mount
(2.51", 56mm inner dia.)

TM4

Use with 3.5" pipe, schedule 40 tenon mount
(4.13", 105mm inner dia.)



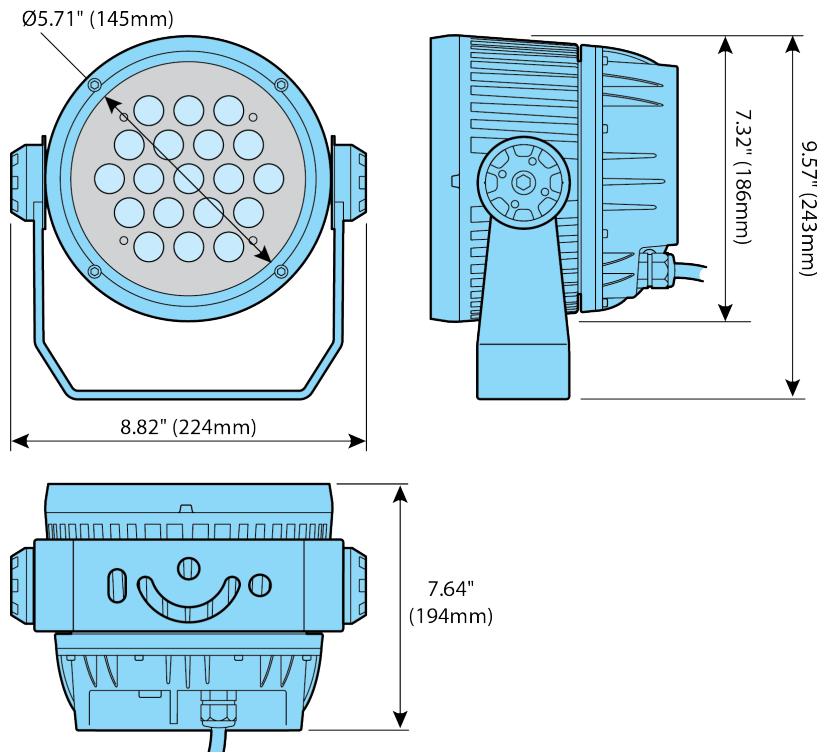
PC2

Use with 2" pipe, schedule 40 pipe clamp
mounts 1 or 2 fixtures

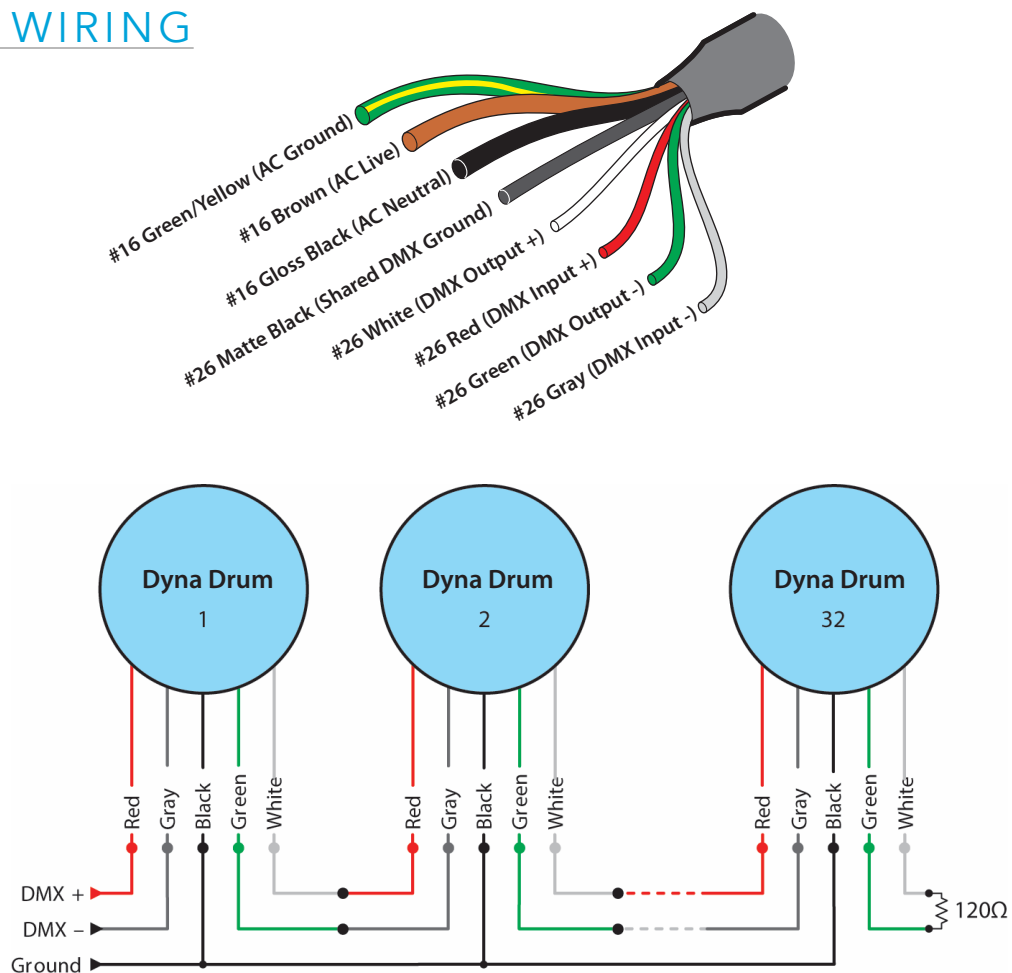
PC4

Use with 4" pipe, schedule 40 pipe clamp
mounts 1 or 2 fixtures

DIMENSIONS



WIRING



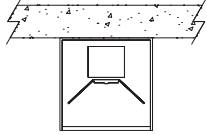
PHOTOMETRICS

Color / Beam	Lumens	Center Candela	Efficacy (l/pw)	CRI (Ra) White LED	TM30
RGBW	1,904	80,056	35	72.8	71.1
RGBA	TBA				
RGBAW	1,578	72,788	30	72.6	70.6
DW	2,268	104,302	43	80.2	76.2

MOUNTING

ORDERING CODE

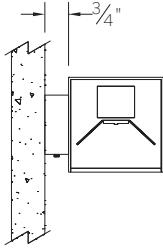
DESCRIPTION



SM

SURFACE MOUNT

- Use appropriate fastener through $\varnothing 3/16"$ holes in housing
- Power entry through $\varnothing 7/8"$ hole on the back at an end

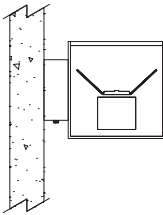


WD

WALL MOUNT – DIRECT ORIENTATION

Mounting option includes:

- 1-7/8" H x 4-1/2" W aluminum bracket projects the fixture housing 3/4" from the wall surface



WI

WALL MOUNT – INDIRECT ORIENTATION

Mounting option includes:

- 1-7/8" H x 4-1/2" W aluminum bracket projects the fixture housing 3/4" from the wall surface

EPA CALCULATIONS

LENGTH ORDERING CODE	EPA
2	0.99 ft ²
3	1.46 ft ²
4	1.94 ft ²
5	2.42 ft ²
6	2.89 ft ²
7	3.36 ft ²
8	3.84 ft ²