



DESIGN REVIEW BOARD

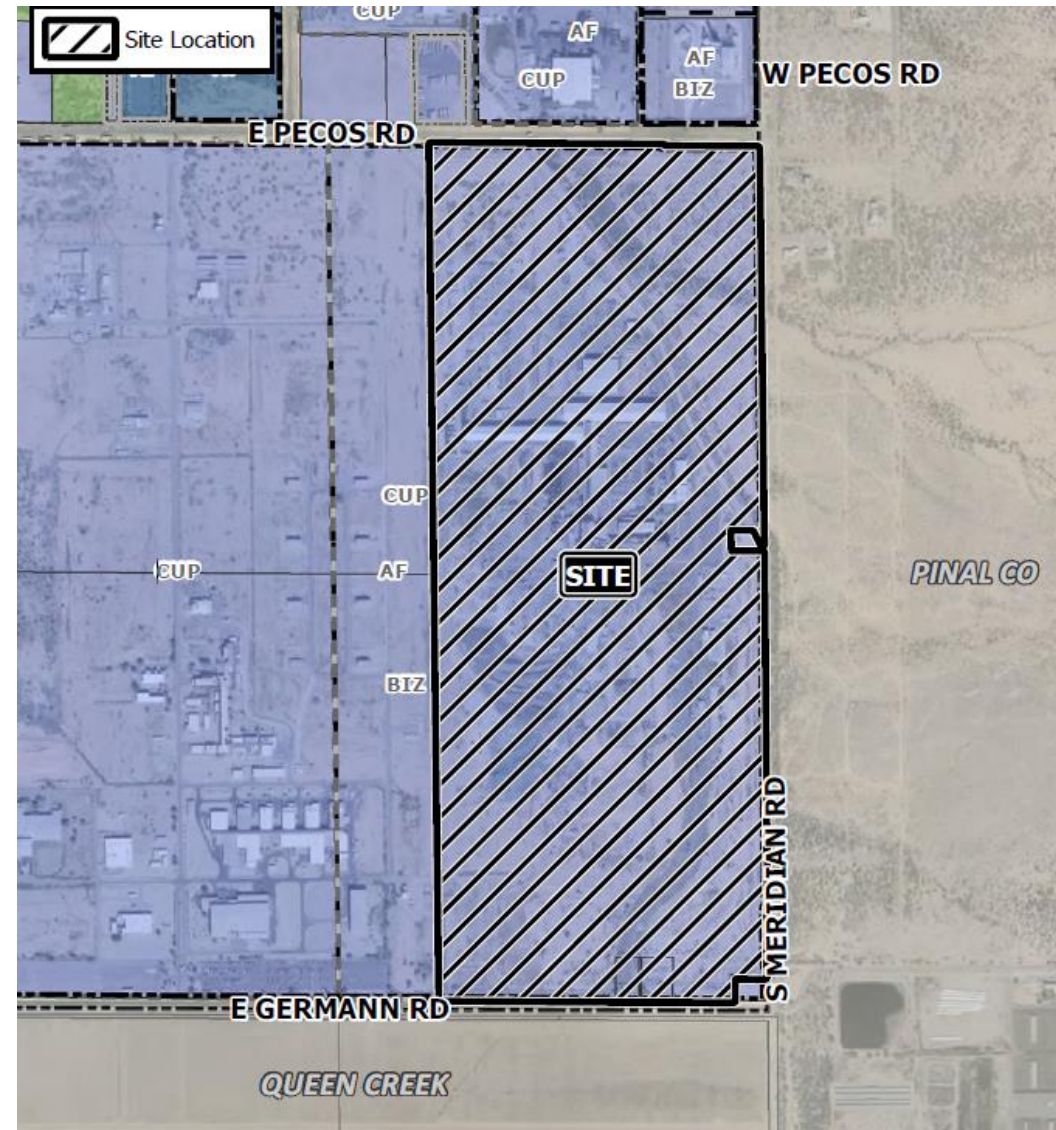
February 9, 2021



DRB20-00893

Location

- West of the Meridian Road alignment, south of Pecos Road and north of Germann Road





Request

- Design Review

Purpose

- Proposed new industrial buildings within an existing industrial development

Street View



Looking south from Pecos Road



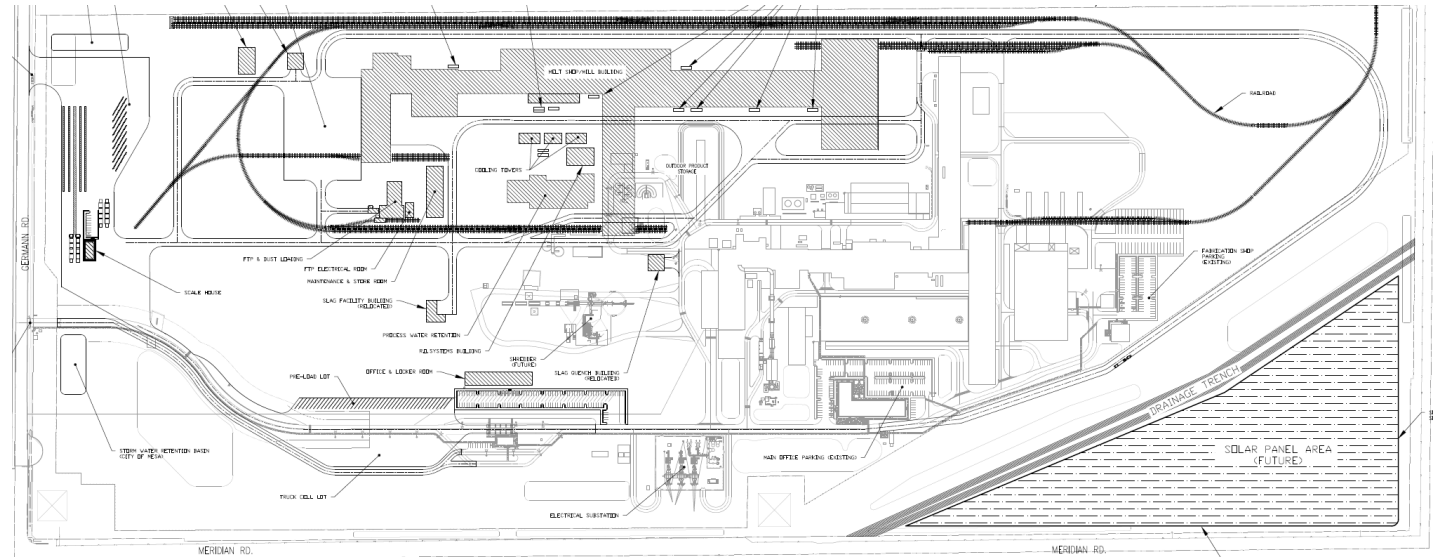
Looking north from Germann Road

Site Photos




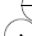



















Site Plan

- Mill building expansion with supporting industrial buildings



Landscape Plan

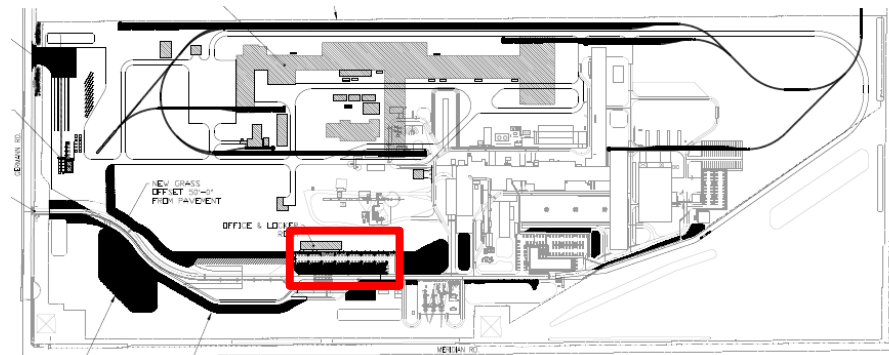
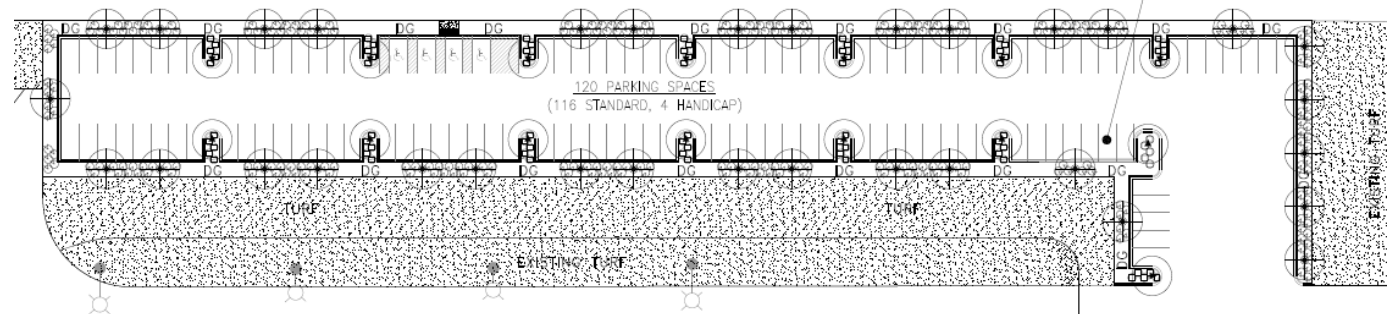
PROPOSED PLANT PALETTE

TREES		SIZE
	NATIVE MESQUITE	48" BOX, LOW-BREAKER
	'AZT HYBRID' MESQUITE	24" BOX, LOW-BREAKER
	'AZT HYBRID' PALO VERDE	24" BOX, LOW-BREAKER
	DESERT MUSEUM PALO VERDE	36" BOX, LOW-BREAKER
	EVERGREEN ELM	24" BOX, LOW-BREAKER
	SHOESTRING ACAIA	15 GAL, LOW-BREAKER
SHRUBS		
	MEXICAN BIRD OF PARADISE	5 GAL
	CREOSOTE	5 GAL
	COMPACT JOJOBA	5 GAL
	VALENTINE BUSH	5 GAL
	DEER GRASS	5 GAL
	SAGE SPECIES	5 GAL
	SENNA SPECIES	5 GAL
	OCTOPUS AGAVE	5 GAL
	YUCCA BACCATA	5 GAL
	DESERT SPOON	5 GAL
	SAGE SPECIES	5 GAL
GROUND COVER		
	70% BURSAGE/30% BRITTLE BUSH	1 GAL
	'NEW GOLD' LANTANA	1 GAL @ 3' O.C.
	TRAILING ROSEMARY	1 GAL @ 3' O.C.
	DESSERT CARPET ACACIA	1 GAL @ 3' O.C.
DG DECOMPOSED GRANITE - 3/8" MINUS MADISON GOLD		
2" THICK TYPICAL - GRANITE EXPRESS OR EQUAL APPLIED OVER PRE-EMERGENT PER MANUF. SPECIFICATIONS, 2 APPLICATIONS MIN.		

PROVIDED QUANTITIES (NEW)

TREES	
'DESERT MUSEUM' PALO VERDE	17
AZT HYBRID MESQUITE	36
TOTAL	53

SHRUBS	
YUCCA	94
VALENTINE BUSH	<u>280</u>
TOTAL	374



Landscape Plan

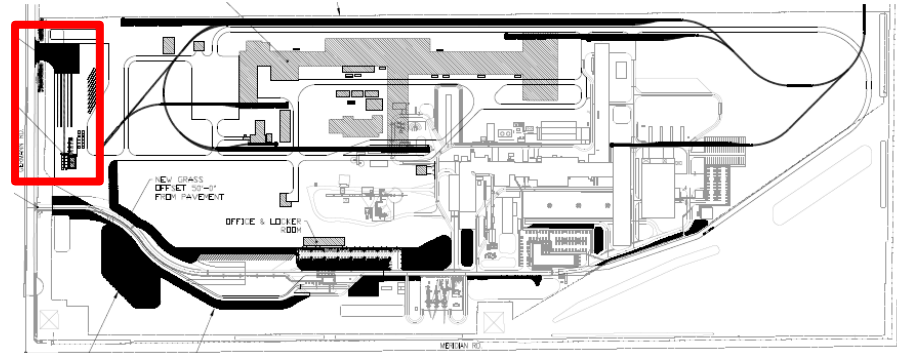
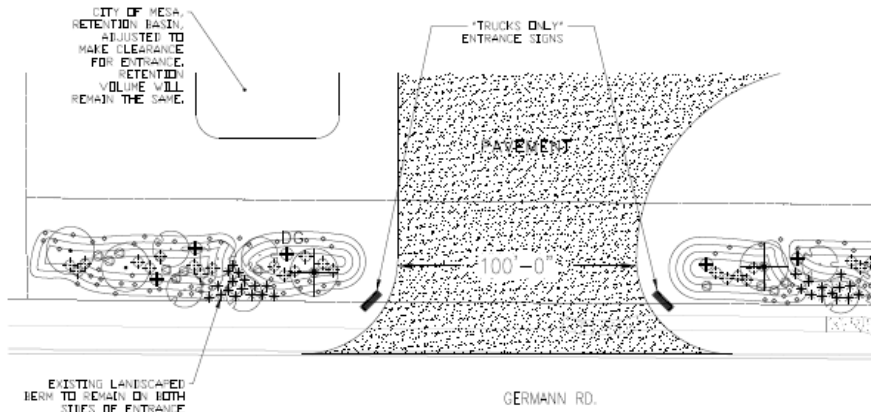
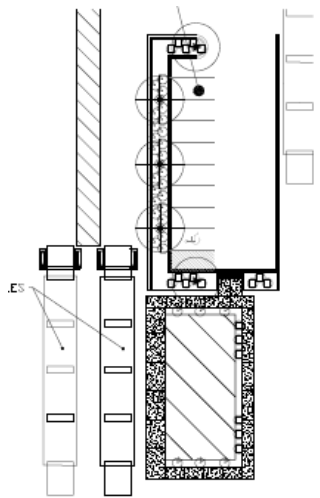
PROPOSED PLANT PALETTE

TREES	SIZE
NATIVE MESQUITE	48" BOX, LOW-BREAKER
'AZT HYBRID' MESQUITE	24" BOX, LOW-BREAKER
'AZT HYBRID' PALO VERDE	24" BOX, LOW-BREAKER
'DESERT MUSEUM' PALO VERDE	36" BOX, LOW-BREAKER
EVERGREEN ELM	24" BOX, LOW-BREAKER
SHOESTRING ACAA	15 GAL, LOW-BREAKER
SHRUBS	
① MEXICAN BIRD OF PARADISE	5 GAL
⊕ CREOSOTE	5 GAL
⊕ COMPACT JOJOBA	5 GAL
⊕ VALENTINE BUSH	5 GAL
* DEER GRASS	5 GAL
⊕ SAGE SPECIES	5 GAL
⊕ SENNA SPECIES	5 GAL
* OCTOPUS AGAVE	5 GAL
⊕ YUCCA BACCATA	5 GAL
⊕ DESERT SPOON	5 GAL
⊕ SAGE SPECIES	5 GAL
GROUND COVER	
* 70% BURSAGE/30% BRITTLE BUSH	1 GAL
A 'NEW GOLD' LANTANA	1 GAL @ 3' O.C.
B TRAILING ROSEMARY	1 GAL @ 3' O.C.
C 'DESERT CARPET' ACACIA	1 GAL @ 3' O.C.
DG DECOMPOSED GRANITE - 3/8" MINUS MADISON GOLD	
2" THICK TYPICAL - GRANITE EXPRESS OR EQUAL APPLIED OVER PRE-EMERGENT PER MANUF. SPECIFICATIONS, 2 APPLICATIONS MIN.	

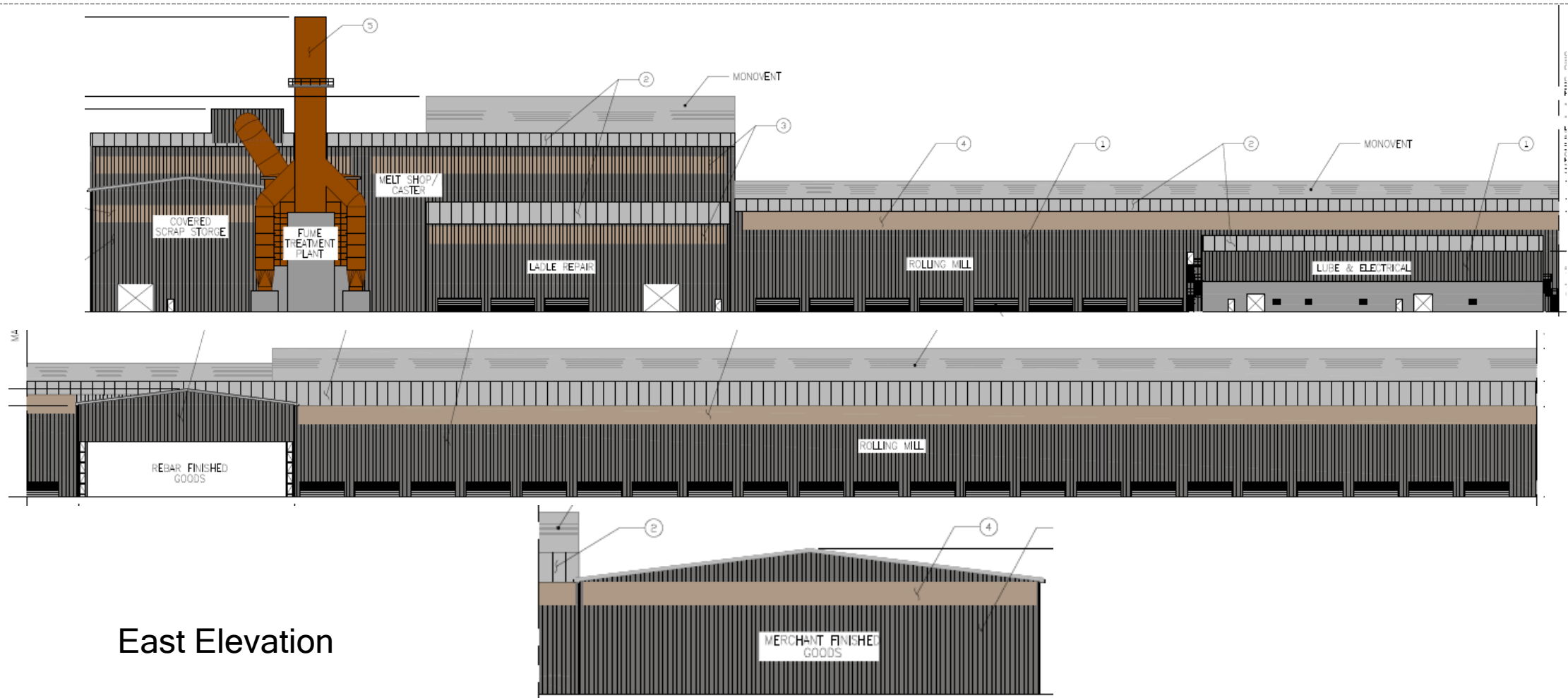
PROVIDED QUANTITIES (NEW)

TREES	
'DESERT MUSEUM' PALO VERDE	17
AZT HYBRID MESQUITE	36
TOTAL	53

SHRUBS	
YUCCA	94
VALENTINE BUSH	280
TOTAL	374

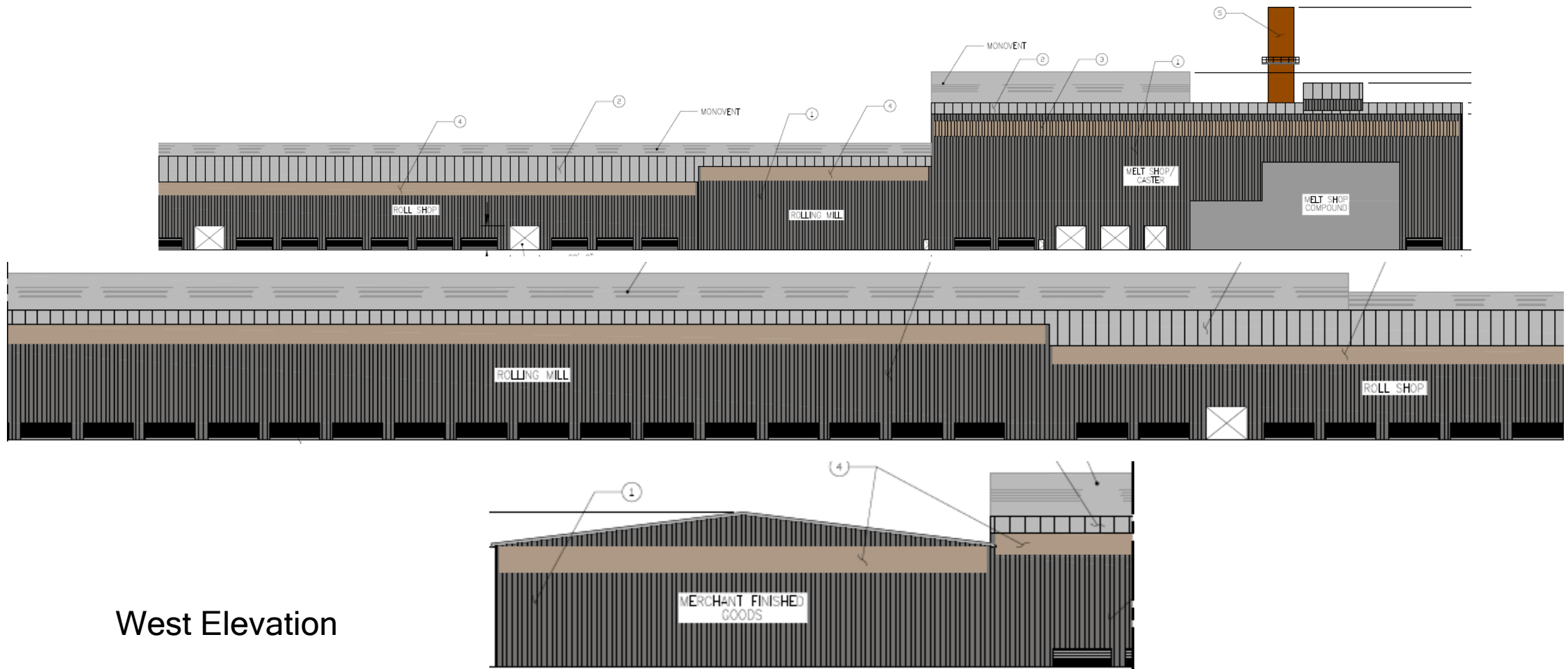


Elevations



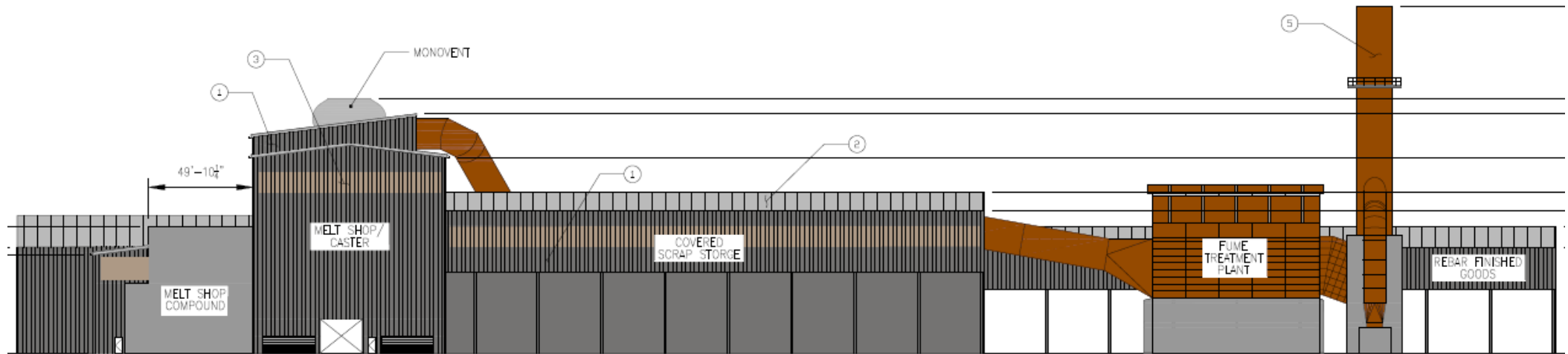
East Elevation

Elevations

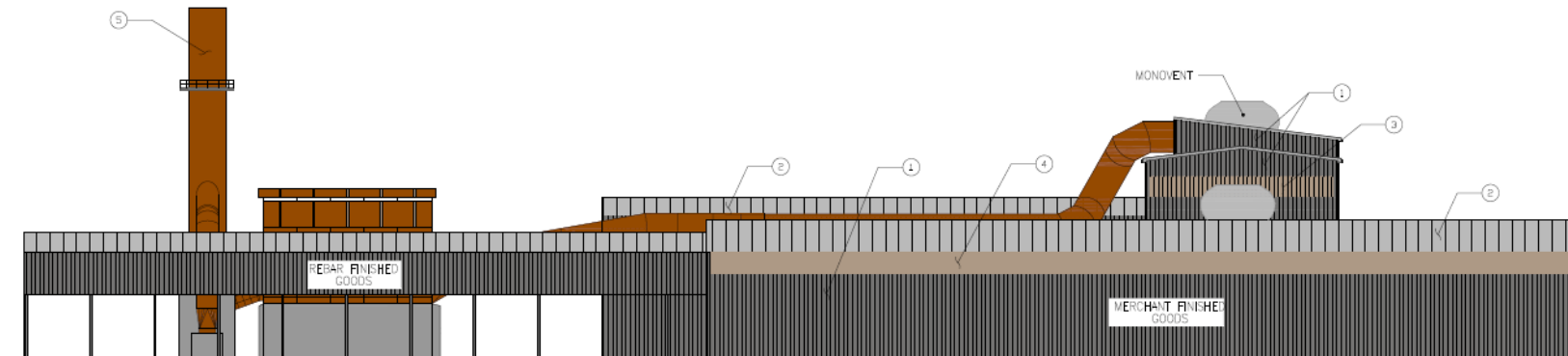


West Elevation

Elevations



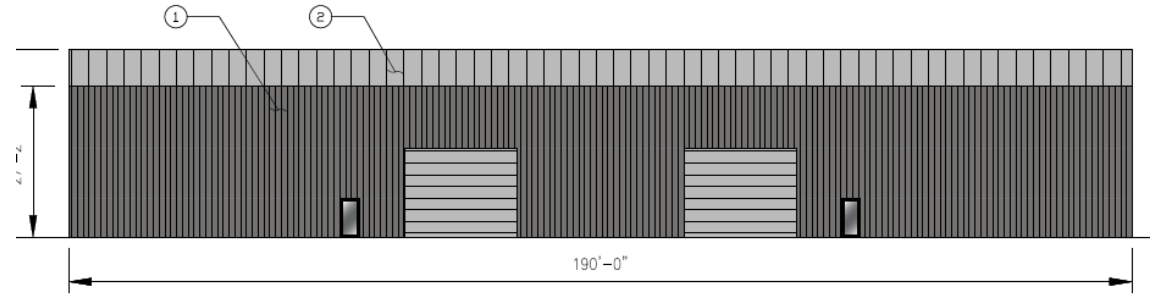
South Elevation



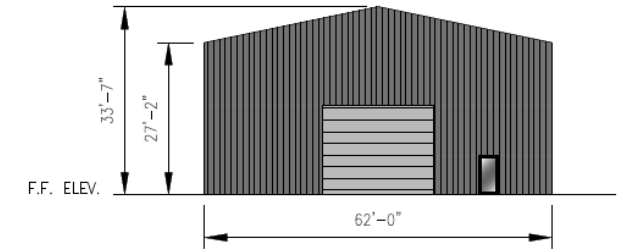
North Elevation

Elevations

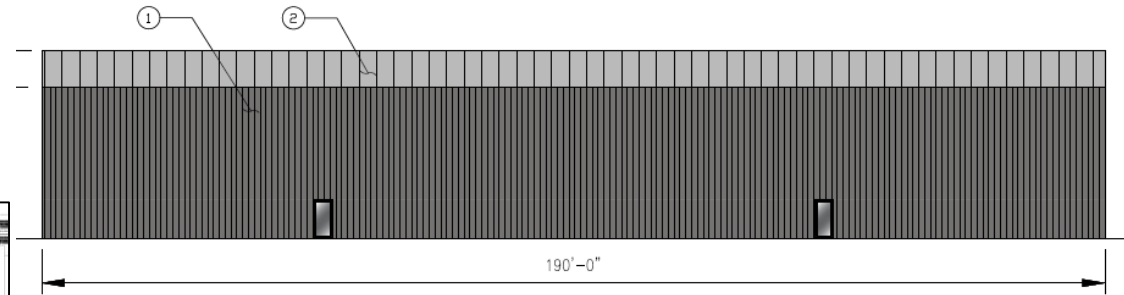
MAINTENANCE & STORE ROOM



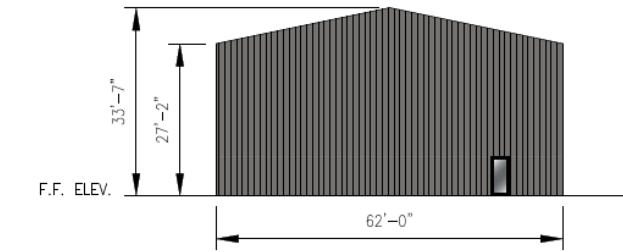
NORTH ELEVATION (LOOKING SOUTH)
SCALE: 1/16"=1'-0"



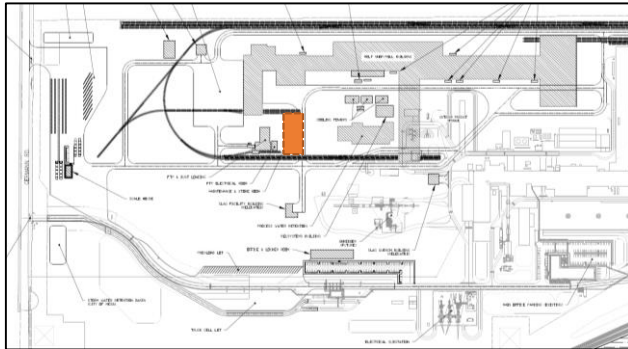
WEST ELEVATION (LOOKING EAST)
SCALE: 1/16"=1'-0"



SOUTH ELEVATION (LOOKING NORTH)

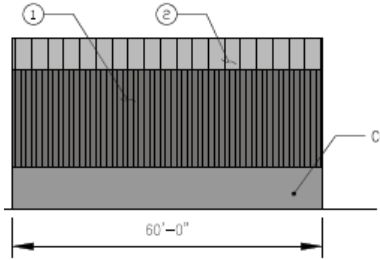


EAST ELEVATION (LOOKING WEST)

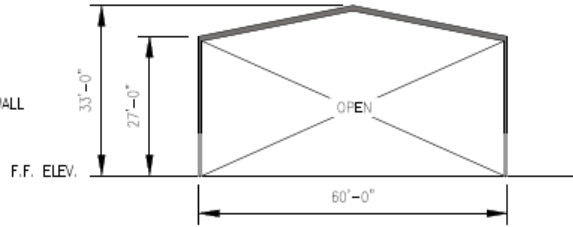


Elevations

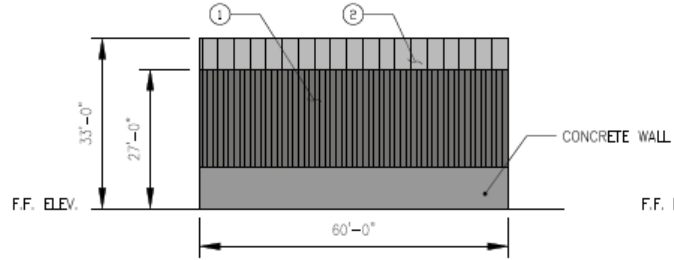
SLAG QUENCH BUILDING (AZ2)



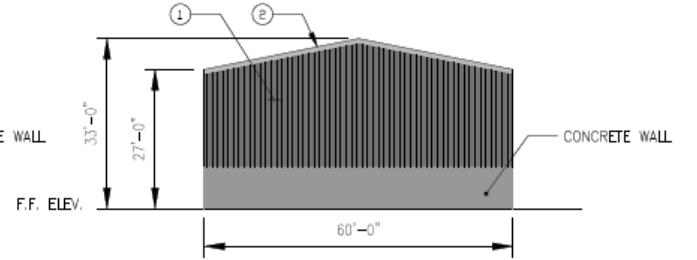
SOUTH ELEVATION (LOOKING NORTH)
SCALE: 1/16"=1'-0"



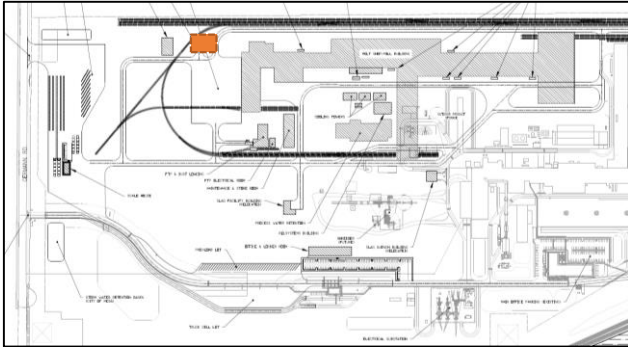
EAST ELEVATION (LOOKING WEST)
SCALE: 1/16"=1'-0"



NORTH ELEVATION (LOOKING SOUTH)
SCALE: 1/16"=1'-0"

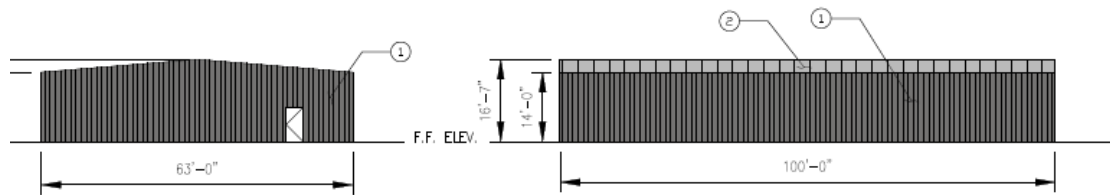


WEST ELEVATION (LOOKING EAST)
SCALE: 1/16"=1'-0"



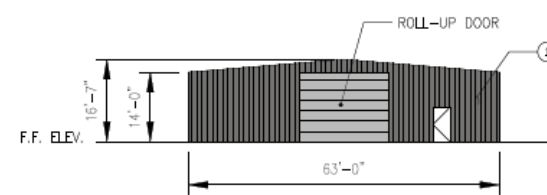
Elevations

DRY GOODS STORAGE

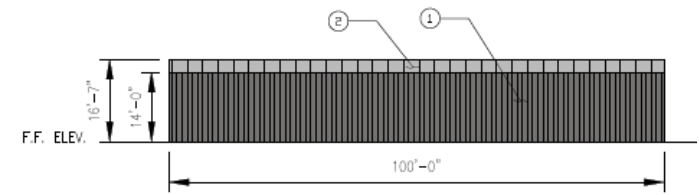


WEST ELEVATION (LOOKING EAST)
SCALE: 1/16"=1'-0"

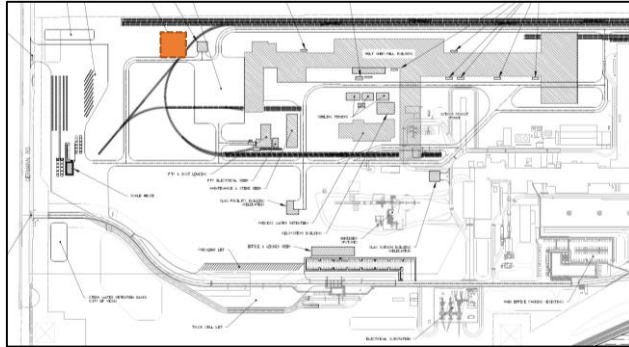
SOUTH ELEVATION (LOOKING NORTH)
SCALE: 1/16"=1'-0"



EAST ELEVATION (LOOKING WEST)
SCALE: 1/16"=1'-0"

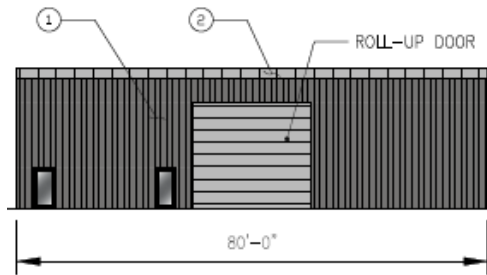


NORTH ELEVATION (LOOKING SOUTH)
SCALE: 1/16"=1'-0"

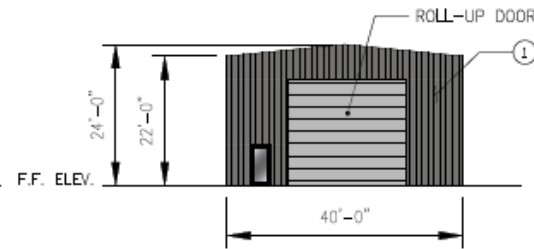


Elevations

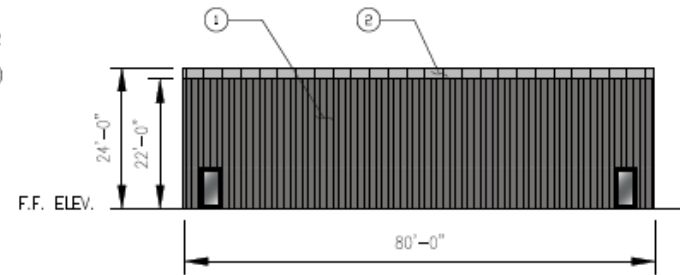
SLAG FACILITIES (TMS)



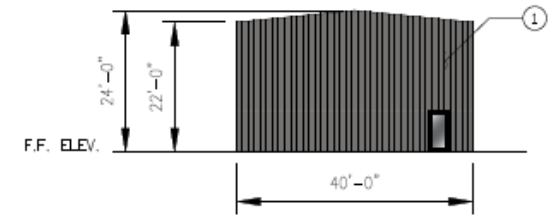
NORTH ELEVATION (LOOKING SOUTH)
SCALE: 1/16"=1'-0"



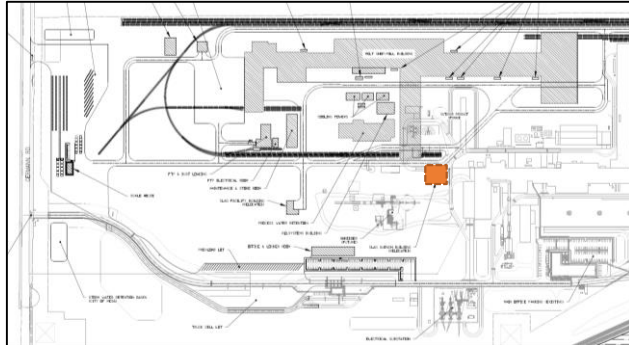
WEST ELEVATION (LOOKING EAST)
SCALE: 1/16" = 1'-0"



SOUTH ELEVATION (LOOKING NORTH)
SCALE: 1/16" = 1'-0"

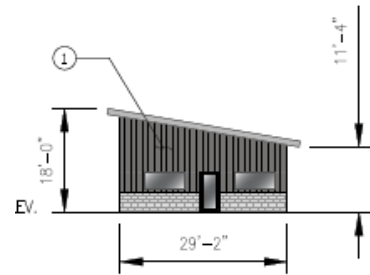


EAST ELEVATION (LOOKING WEST)
SCALE: 1/16"=1'-0"

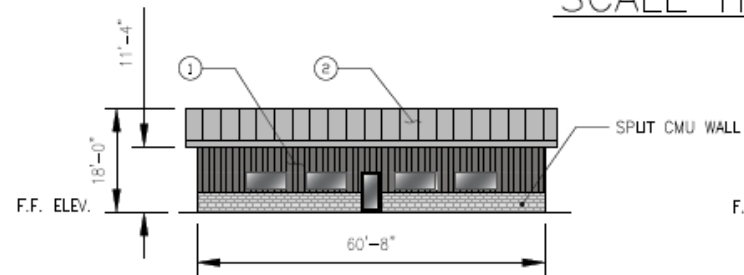


Elevations

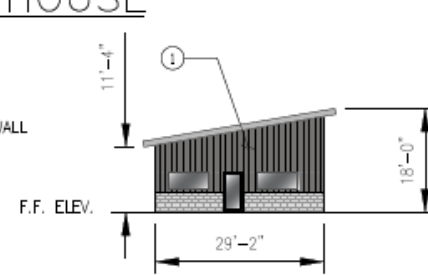
SCALE HOUSE



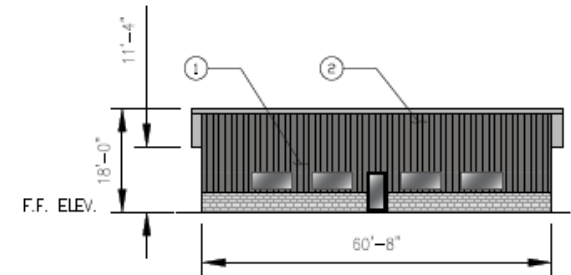
EAST ELEVATION (LOOKING WEST)
SCALE: 1/16"=1'-0"



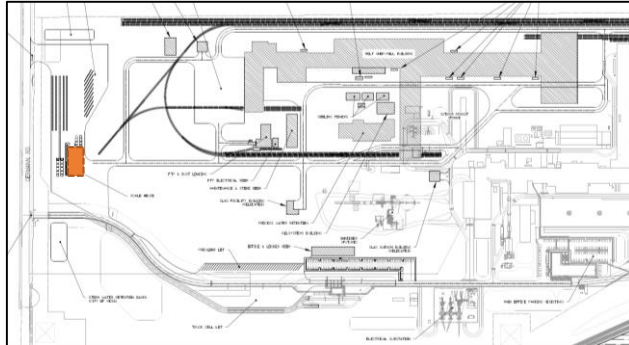
NORTH ELEVATION (LOOKING SOUTH)
SCALE: 1/16"=1'-0"



WEST ELEVATION (LOOKING EAST)
SCALE: 1/16"=1'-0"



SOUTH ELEVATION (LOOKING NORTH)
SCALE: 1/16"=1'-0"



Colors & Materials

① WALL PANEL

Material: Metal Siding

Color: Mesa Gray



② ROOF PANEL

Material: Metal, Standing Seam

Color: Galvalume



③ WALL PANEL

Material: Metal Siding

Color: Desert Beige



④ TRANSLUCENT PANEL

Material: Metal Siding

Color: Desert Beige



⑤ FTP PANEL / DUCT

Material: Weathering Steel

Color: Rust Orange



Summary

Findings

- Project complies with design modifications per the approved BIZ Overlay
- Staff has no major concerns
- Staff welcomes any feedback



DESIGN REVIEW BOARD

February 9, 2021