



DESIGN REVIEW BOARD

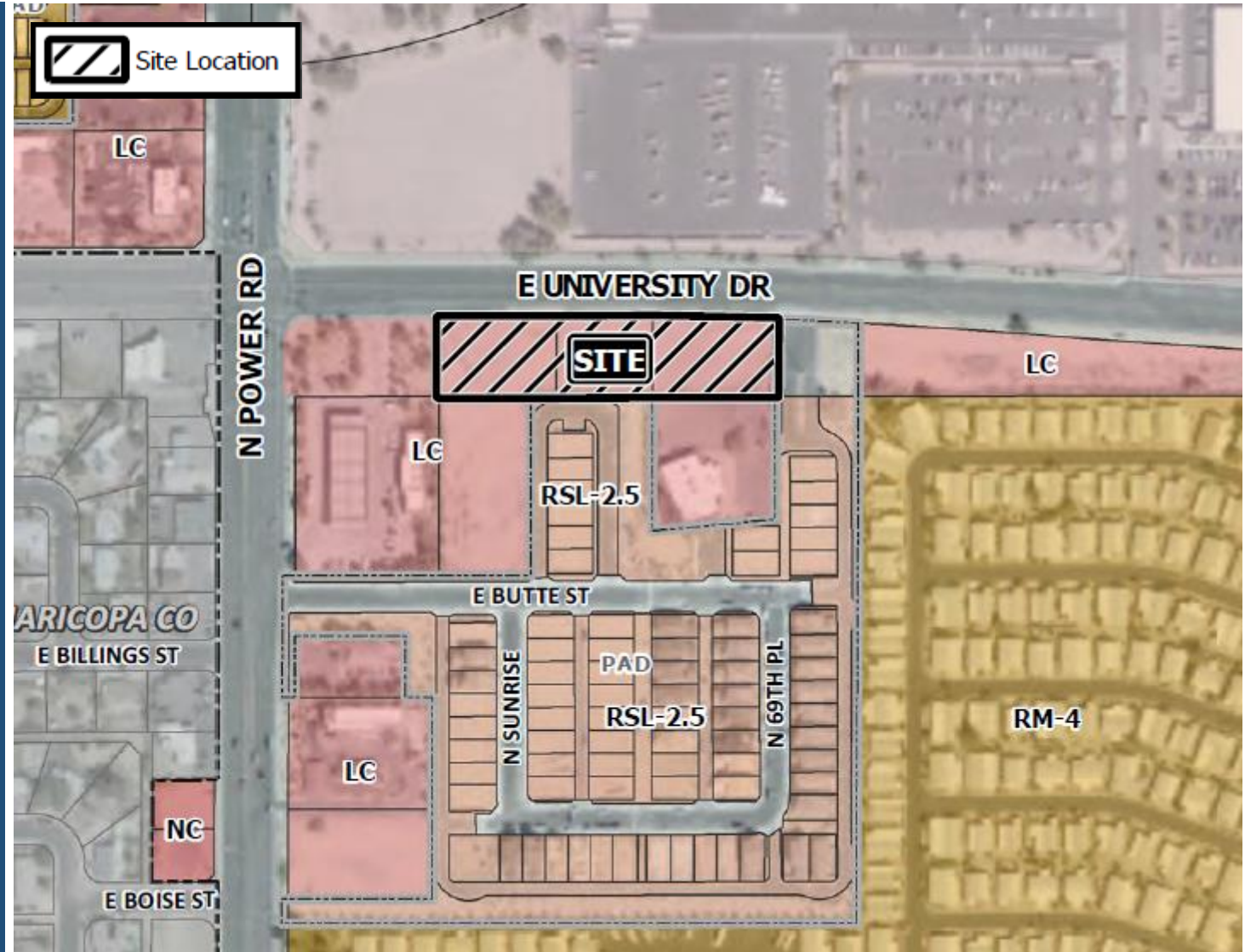
February 9, 2021



DRB20-00211

Location

- East of Power Road south side of University Drive





Request

- Design Review

Purpose

- Proposal for two new multi-tenant commercial buildings

Street View



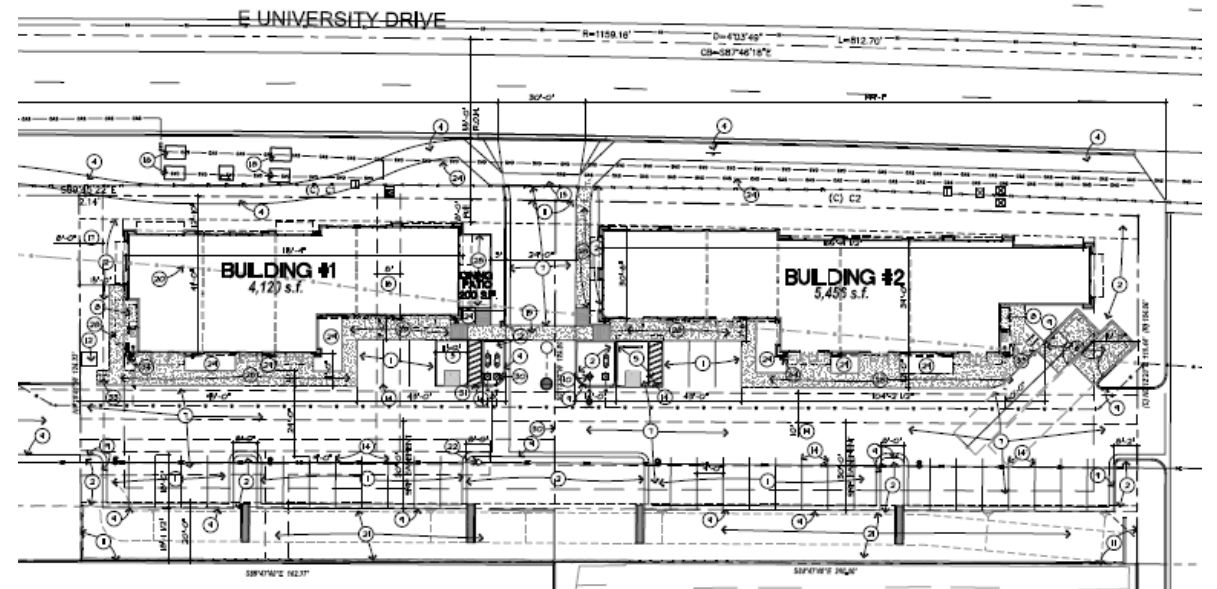
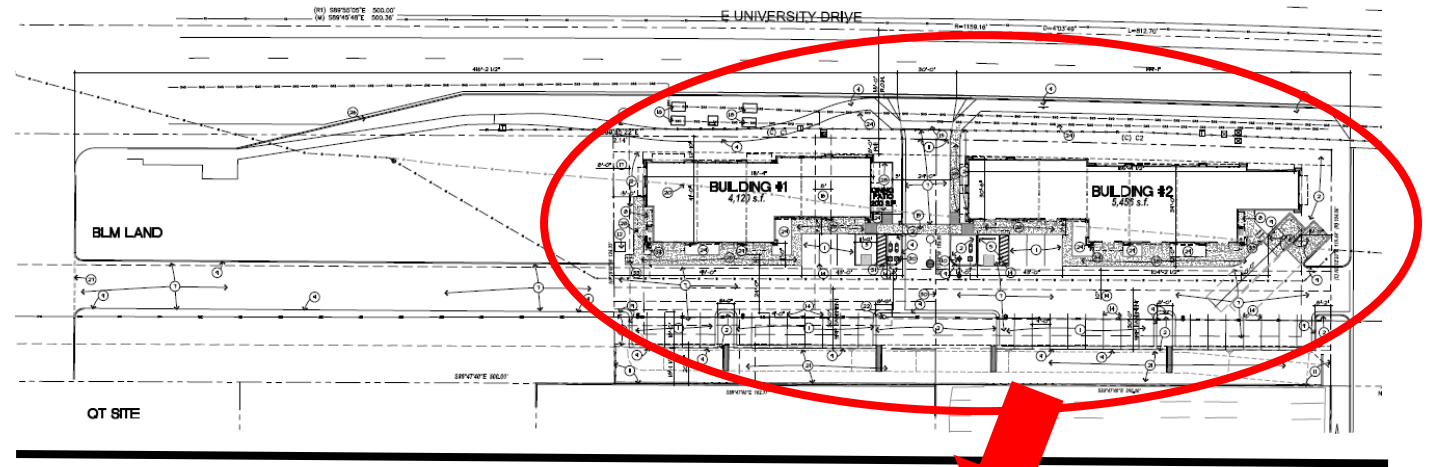
Looking southwest from University Drive

Street View

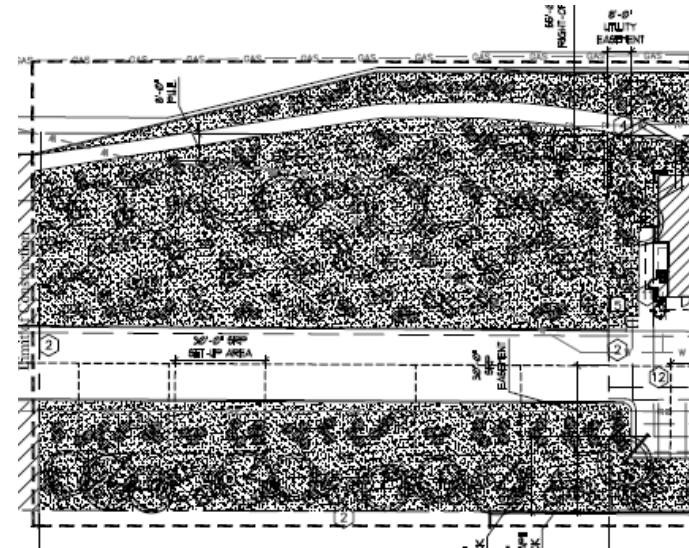
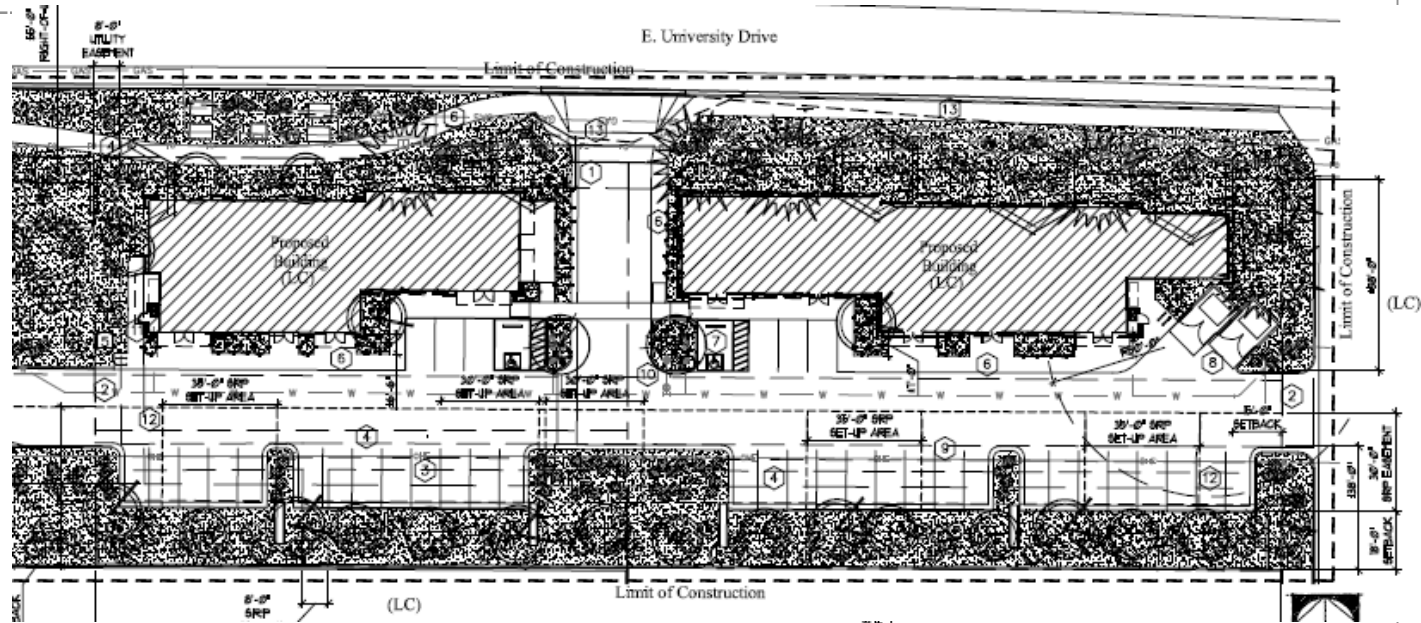


Looking southeast from University Drive

Site Plan



Landscape Plan



Landscape Palette

Plant Legend

Sym.	Botanical Name	Common Name	*Qty.	Size	Remarks
Shrubs					
	CAESALPINA PULCHERRIMA	BIRD OF PARADISE	7	5 GAL.	SPACE 6' O.C., 5' FROM HARDSCAPE
	RUELLIA CALIFORNICA	SONORAN DESERT RUELLIA	17	5 GAL.	SPACE 4' O.C., 3' FROM HARDSCAPE
	DASYLIRION WHEELERI	DESERT SPOON	5	5 GAL.	FULL AND BUSHY
	DURANTA ERECTA	SKYFLOWER	21	5 GAL.	SPACE 4' O.C., 3' FROM HARDSCAPE
	TECOMA STANS	YELLOW BELLS	26	5 GAL.	SPACE 6' O.C., 5' FROM HARDSCAPE
	LEUCOPHYLLUM LANGMANIA 'RIO BRAVO'	RIO BRAVO TEXAS RANGER	100	5 GAL.	SPACE 3' O.C., IN CLUSTERS AS SHOWN
	TECOMA 'SPARKLETTES'	DWARF TECOMA (SPARKLETTES)	66	5 GAL.	SPACE 4' O.C., 3' FROM HARDSCAPE
Accents					
	PENSTEMON PARRYI	PARRY'S PENSTEMON	6	5 GAL.	SPACE AS SHOWN
	HEMEROCALLIS PARVIFLORA	RED YUCCA	61	5 GAL.	FULL AND BUSHY
	MUHLENBERGIA RIGIDA 'NASHVILLE'	NASHVILLE DEER GRASS	35	1 GAL.	FULL AND BUSHY
Trees					
	ACACIA ANEURA	MULGA TREE	20	36" BOX	TALL UPRIGHT, WELL DEVELOPED BRANCHING STRUCTURE (10'-0" TALL, 8'-0" WIDE, 2 1/2" MIN. CALIPER)
	PINUS ELDARICA	MONEL PINE	6	24" BOX	TALL, UPRIGHT, CONE SHAPED (10'-0" TALL, 4'-0" WIDE, 2 1/2" MIN. CALIPER) AVAIL THRU BASELINE TREES (602-989-9275)
	ULMUS PARVIFOLIA 'EMER II'	ALLEE ELM	5	36" BOX	TALL, UPRIGHT, (14'-0" TALL, 8'-0" WIDE, 2 1/2" MIN. CALIPER)
	CHITALPA TASHKENTENSIS 'PINK DAWN'	PINK DAWN CHITALPA	2	24" BOX	SINGLE-TRUNK, LOW BRANCHING, VASE SHAPED (MINIMUM 10'-0" HEIGHT, 4'-0" WIDE, 1 1/2" MIN. CALIPER)
	ACACIA SALICINA	WILLOW ACACIA	4	24" BOX	TALL UPRIGHT, WELL DEVELOPED BRANCHING STRUCTURE (8'-0" TALL, 4'-0" WIDE, 1 1/2" MIN. CALIPER)
	ACACIA SMALLII	SWEET ACACIA	4	36" BOX	SINGLE TRUNK, LOW BRANCHING (MINIMUM 10'-0" HEIGHT, 8'-0" WIDE, 2 1/2" CALIPER)
	SOPHORA SECUNDIFLORA	TEXAS MOUNTAIN LAUREL	11	36" BOX	SINGLE TRUNK, LOW BRANCHING (MINIMUM 6'-0" HEIGHT, 4'-0" WIDE, 2 1/2" CALIPER)
Ground Cover					
	RUELLIA BRITTONIANA 'KATE' (SRP APPROVED GROUND COVER)	KATE RUELLIA	187	1 GAL.	SPACE 3' O.C., 3' FROM HARDSCAPE

Elevations



West Building (1)

Elevations

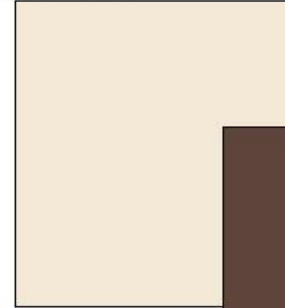


East Building (2)

Colors & Materials

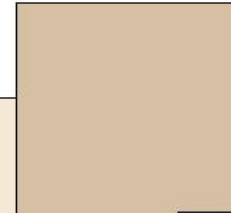
Building Color A:

Stucco System (Sand Finish)
Dunn-Edwards DE 6141
Color: Salt Box



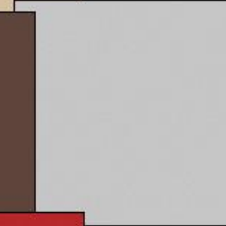
Building Color B:

Stucco System (Sand Finish)
Dunn-Edwards DE 6143
Color: Almond Latte



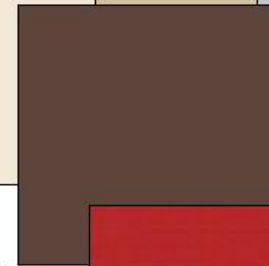
Building Color C:

Stucco Accent
Dunn-Edwards DE 6374
Color: Silver Polish



Building Color D:

Stucco Accent
Dunn-Edwards DEA 158
Color: Northern Territory



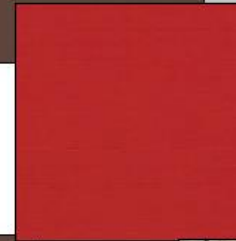
Metal Awning F:

Metal Frame Powder Coated
Dunn-Edwards DEA 158
Color: Northern Territory



Metal Awning E:

Material Screen
COLOR: Sunbrella Red



Storefront Systems G:

Storefront Doors & Windows
Anodised dark bronze Frame
Clear Glass



Stone Veneer H:

Coronado Stone
Honey Ledge
Sioux Falls



Summary

Findings

- Project complies Section 11-6-3(B) of the Mesa Zoning Ordinance
- Staff has no major concerns
- Staff welcomes any feedback



DESIGN REVIEW BOARD

February 9, 2021