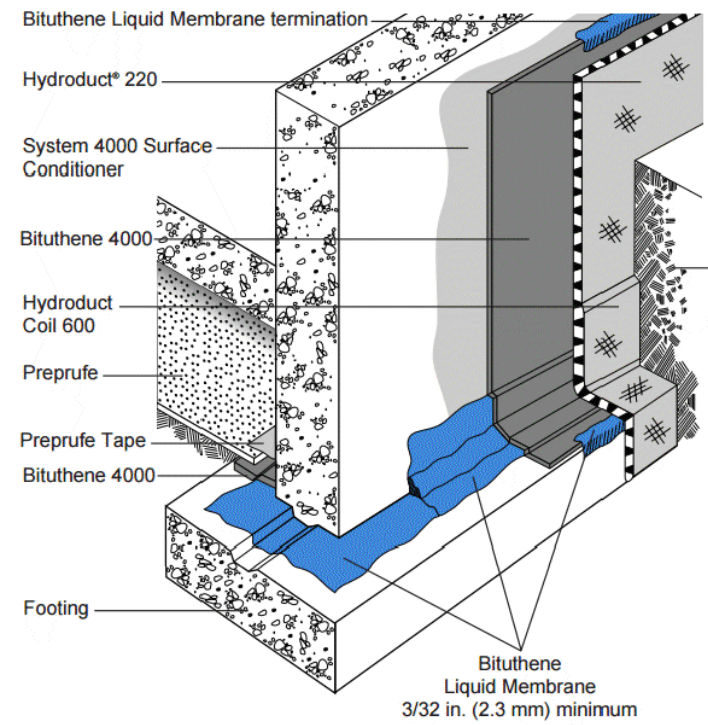
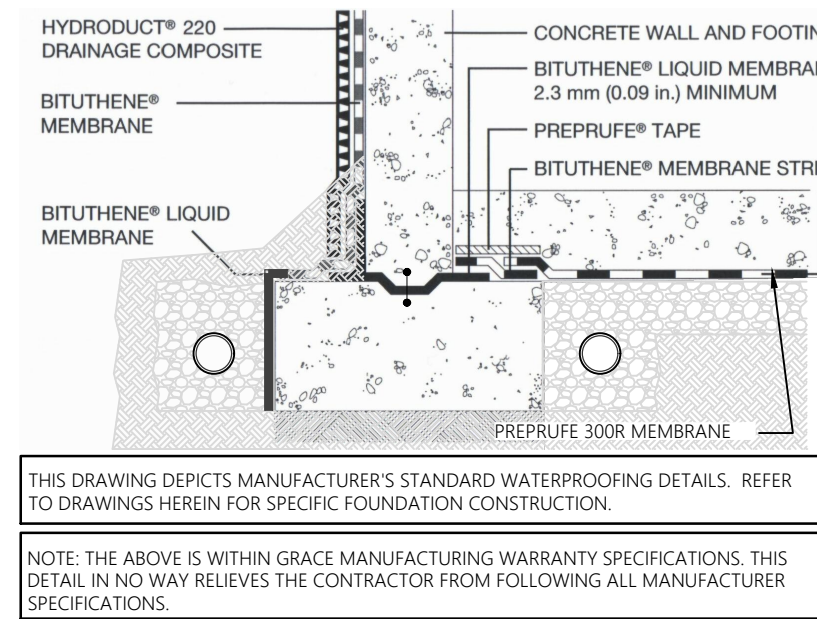
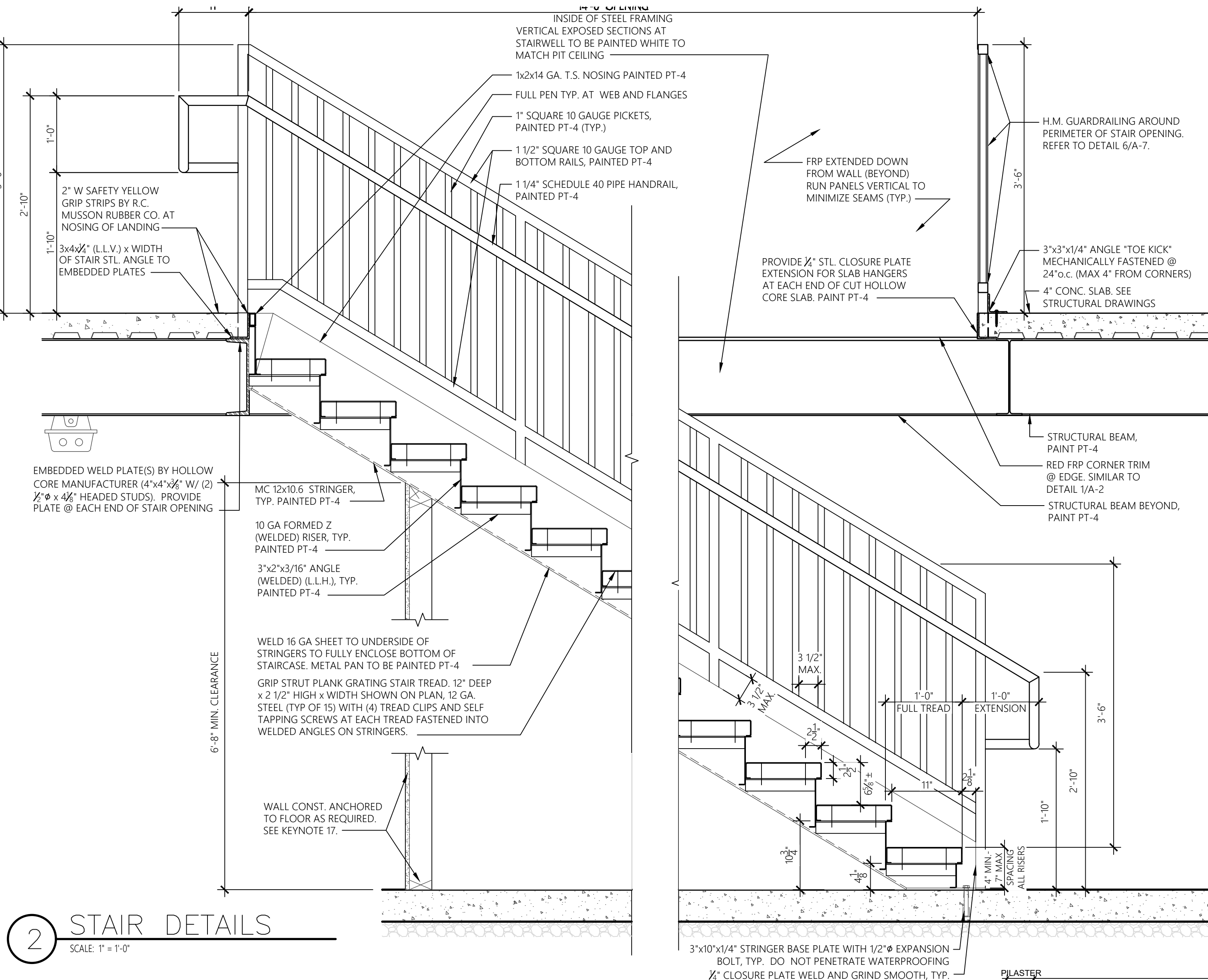


\\greenbergfarrow.com\ProjectFiles\Projects\2019\01191770\300 Color Elevations\Produced_Current\3BRH-AZ-EXTWR_A1 Lower Level Floor Plan_1/14/2021 9:03:30 AM_UBETANCOURT



GCP Applied Technologies Membrane Installation

- ALL SURFACES MUST BE FREE FROM DIRT, GREASE, DUST, CONCRETE GROUT, OR OTHER CONTAMINANTS.
- BITUTHENE LIQUID MAY BE APPLIED AT TEMPERATURES ABOVE 26° F

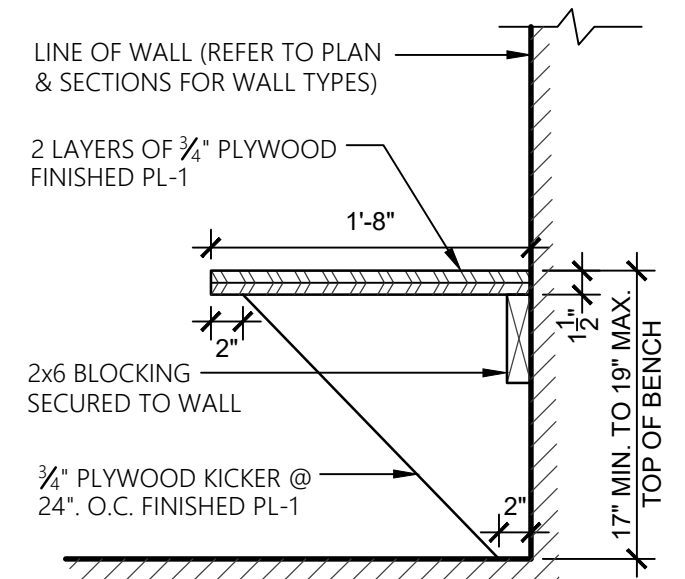
NOTE: LIGHT BROOM FINISH ON PIT FLOOR WITH (3) COATS OF MASTERKURE CC HIGH GLOSS. TWO COATS AT TIME OF INITIAL FINISH AND ONE COAT AFTER CLEANING, JUST PRIOR TO TURNOVER.

NOTE: REFER TO STRUCTURAL DRAWINGS FOR ADDITIONAL INFORMATION.

NOTE: (2) 500 GALLON WASTE OIL TANKS SHOULD BE PLACED AT END OF ACCESSIBLE END OF BUILDING FOR TRUCKS, BASED ON SITE CONDITIONS

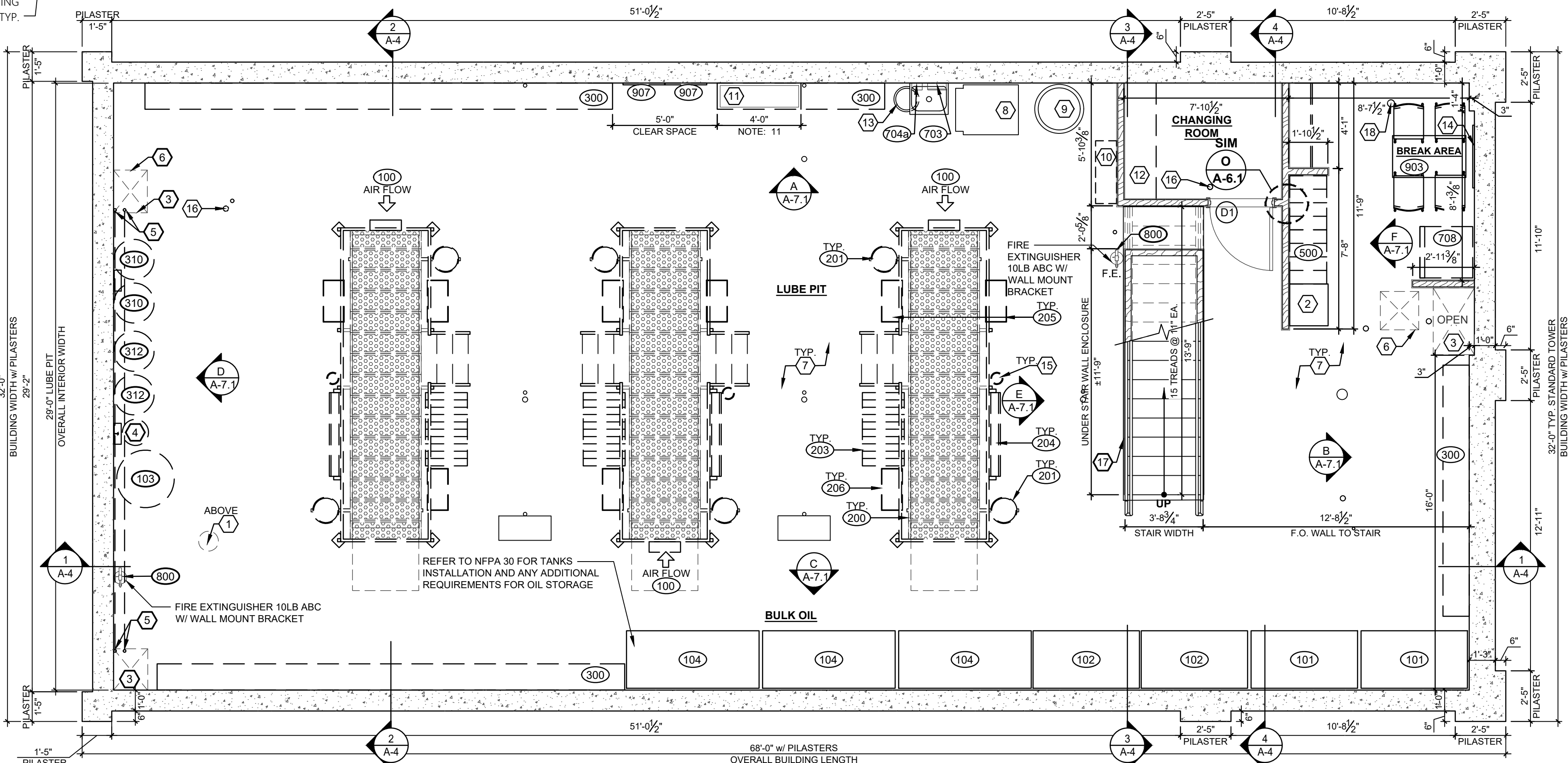
FLOOR PLAN KEY NOTES:

- 11" PVC CHASE UP THRU SLAB W/ LIP OF PIPE EXTENDING 1" BELOW FINISH FACE OF CEILING. COORDINATE LOCATION W/ STRUCTURAL, PLUMBING, AND CEILING PLANS.
- DIRTY UNIFORM CABINET.
- LINE OF CHASE ABOVE.
- GEAR OIL CANISTER.
- ROUTE PROCESS PIPING FROM DRUM TRANSFER STATION @ UPPER LEVEL, DOWN IN CHASE TO LUBE BAR DRUM TRANSFER IN LUBE PIT. COORDINATE ROUTING IN FIELD.
- MECHANICAL DUCT ABOVE. SEE MECHANICAL PLANS.
- PROVIDE UNDERSLAB WATERPROOFING BENEATH ENTIRE LOWER LEVEL - SEE WATERPROOFING DETAILS THIS SHEET.
- OIL/WATER SEPARATOR - SEE PLUMBING PLANS.
- ABOVE SLAB SUMP PUMP - SEE PLUMBING PLANS.
- BELT RACK.
- BUMP HAT STORAGE.
- CHANGING BENCH - REFER TO DETAIL 3/A-1
- LUBE PIT/SUMP CROCK BASIN.
- CORK BOARD BY G.C. - REFER TO INTERIOR ELEVATIONS FOR ADDITIONAL INFORMATION
- TIRE ROTATION AIR LINE LOCATION. G.C. TO COORDINATE W/ VENDOR.
- (NOT USED)
- WALL ENCLOSURE UNDER STAIRS. INSTALL 5/8" PLYWOOD OVER 2x4 STUDS. FINISHED FACE OF PLYWOOD TO BE ALIGNED WITH OUTSIDE FACE OF STAIR STRINGER. INSTALL **W-2** ON SURFACE, ALL SIDES



3 BENCH DETAIL

SCALE: N.T.S.



0 LOWER LEVEL FLOOR PLAN

SCALE: 1/4" = 1'-0"

351 West 30th Street, 10th Floor
New York, New York 10001
t: 212.725.9530

COPYRIGHT NOTICE
This drawing is the property of the above referenced Professional and is not to be used for any purpose other than the specific project and site named herein, and cannot be reproduced in any manner without the express written permission from the Professional.

No.	REVISIONS	DATE
1	DESIGN REVIEW SUBMITTAL	01.18.21
2	REVISED PER PLANNING BOARD COMMENTS	11.30.20

Valvoline
Instant Oil Change

VALVOLINE INSTANT OIL CHANGE
2836 S. SIGNAL BUTTE ROAD, MESA, AZ 85209

Professional Seal

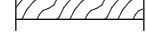
Project No. 20191177
Scale AS NOTED
Drawn BV
Checked RP
Professional in charge SCOTT LOIKITS
Drawing Title

LOWER FLOOR PLAN

Drawing No.

A-1


REF TO WALL TYPES



EXTERIOR WAINSBOT BELOW (THIN BRICK OR VENEER STONE) WITH EIFS OR THIN BRICK ABOVE.

EXTERIOR WAINSBOT (VENEER STONE) OVER MORTAR (LATH AND SCRATCH COAT) OVER MECH. AIR/MOISTURE BARRIER OVER PLYWOOD SHEATHING (PER STRUCTURAL), OVER 2X6 WALL STUDS (TYPE AND SPACING PER STRUCTURAL)

ABOVE WAINSBOT (EIFS OR THIN BRICK) PROVIDE 5/8" HIGH ABUSE GYPSUM WALL BOARD ON INTERIOR FACE OVER POLYETHYLENE VAPOR BARRIER. INSULATE STUD CAVITY WITH BATT INSULATION. REFER TO EXTERIOR ELEVATIONS FOR FINISHES.



INTERIOR WALL: 2x4 STUDS @ 16"o.c. (U.N.O.) or 2x6, 2X8 WHERE NOTED ON PLANS, w/ P.T. SILL PLATE AND DOUBLE TOP PLATES w/ 5/8" GYPSUM BOARD EACH SIDE. EXTEND WALL AND SECURE TO STRUCTURE. INSULATE STUD CAVITY WITH SOUND BATTS WHERE NOTED.

NOTE: REFER TO STRUCTURAL DRAWINGS FOR SHEAR WALL LOCATIONS

